



Photo 1 – View looking towards the initial impact site.



Photo 2 - Close-up view looking towards the initial impact site.



Photo 3 - View looking towards RTN from the initial impact site.



Photo 4 - View of the debris path looking towards the main wreckage.



Photo 5 - View of a ground scar that is perpendicular to the debris path.



Photo 6 - View from the ground scar looking towards the main wreckage.



Photo 7 - View from the main rotor blades looking towards the main wreckage.



Photo 8 - View from the separated left skid looking towards the main wreckage.



Photo 9 - View from the separated right skid looking towards the main wreckage.



Photo 10 - View of the main wreckage.



Photo 11 - View of the engine in the main wreckage.



Photo 12 - View of transmission gears.



Photo 13 - View of liberated K-flex components.



Photo 14 - View of engine turbine blades.

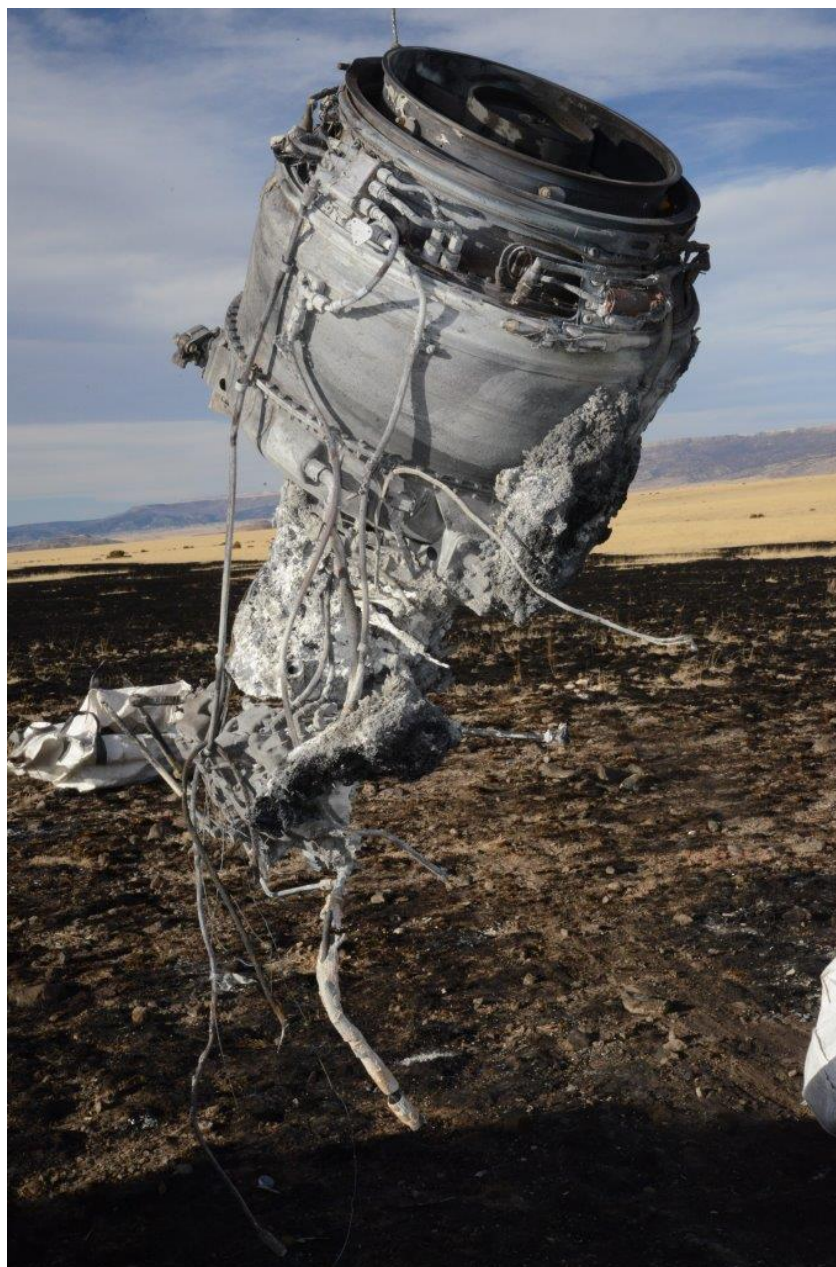


Photo 15 - View of the engine during recovery.



Photo 16 - Close-up view of an altimeter.



Photo 17 - Close-up view of a coupling in the tail rotor drive system.



Photo 18 - View of the left cockpit seat during recovery.



Photo 19 - View of the intermediate tail rotor gear box.



Photo 20 - View of the tail rotor gear box, a tail rotor blade, and tail rotor drive shaft.