



Photo 1 – View of the main wreckage site.



Photo 2 - View of the main wreckage site.



Photo 3 - View of the main wreckage site.



Photo 4 - View of the main wreckage site.



Photo 5 - View of the engine and propeller.



Photo 6 - View of the debris path and trees with separated branches.



Photo 7 - View of the debris path and trees with separated branches.



Photo 8 - View of a section of the instrument panel in the debris path.



Photo 9 - View of a tree with its top branch separated.



Photo 10 - View of the cockpit door.



Photo 11 - View of the empennage at the main wreckage site.



Photo 12 - View of a section of airplane skin with a semicircular deformation.



Photo 13 - View of a propeller blade marked no.1 with S shaped bending.



Photo 14 - View of removed sparkplugs.



Photo 15 - View of fuel servo filter, disassembled electric fuel pump, and disassembled fuel divider.

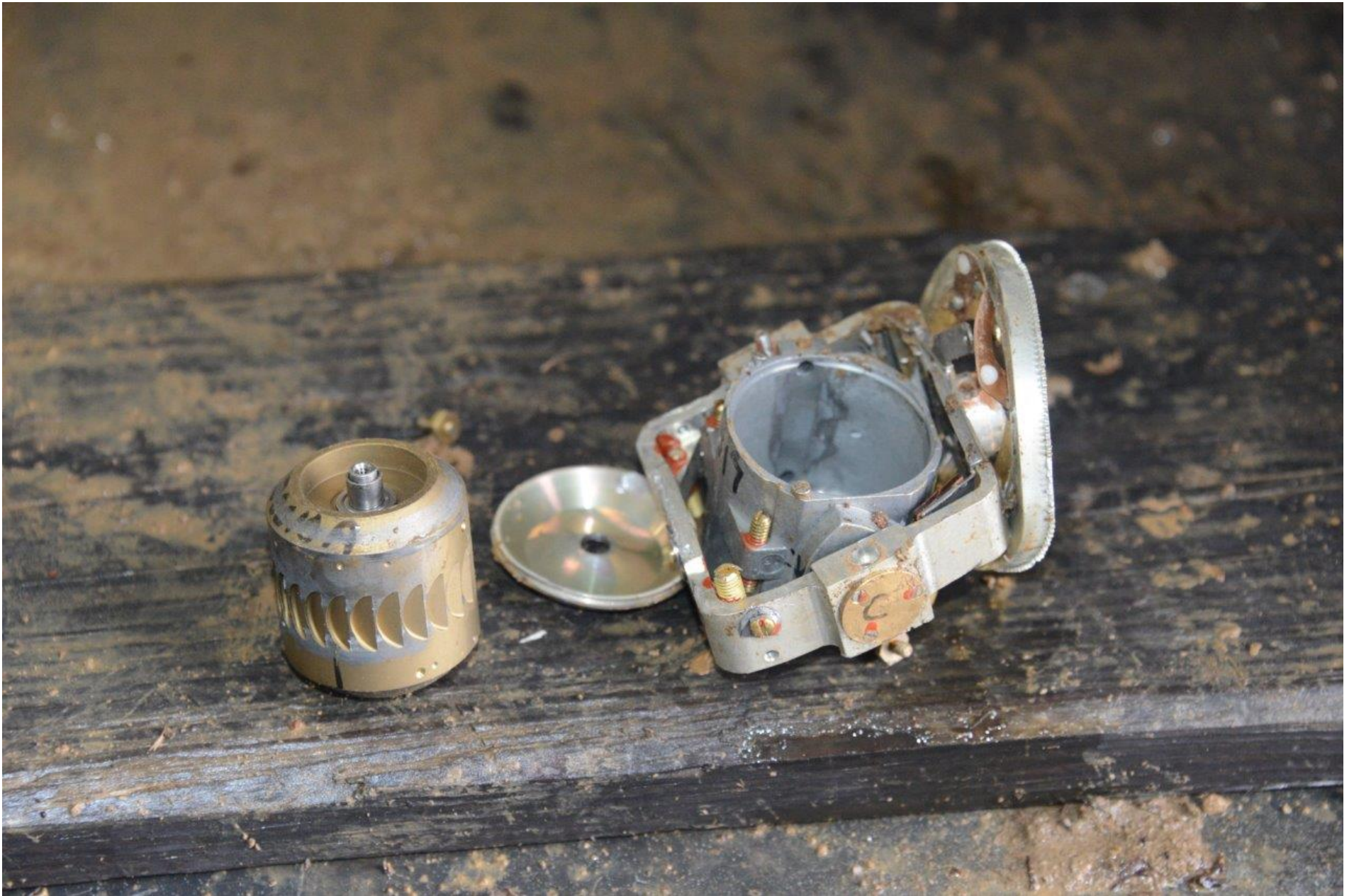


Photo 16 - View of the disassembled instrument gyro and its housing.



Photo 17 - View of the emergency locator transmitter.



Photo 18 - View of the propeller piston, pitch change rod, spring, and pitch change fork.

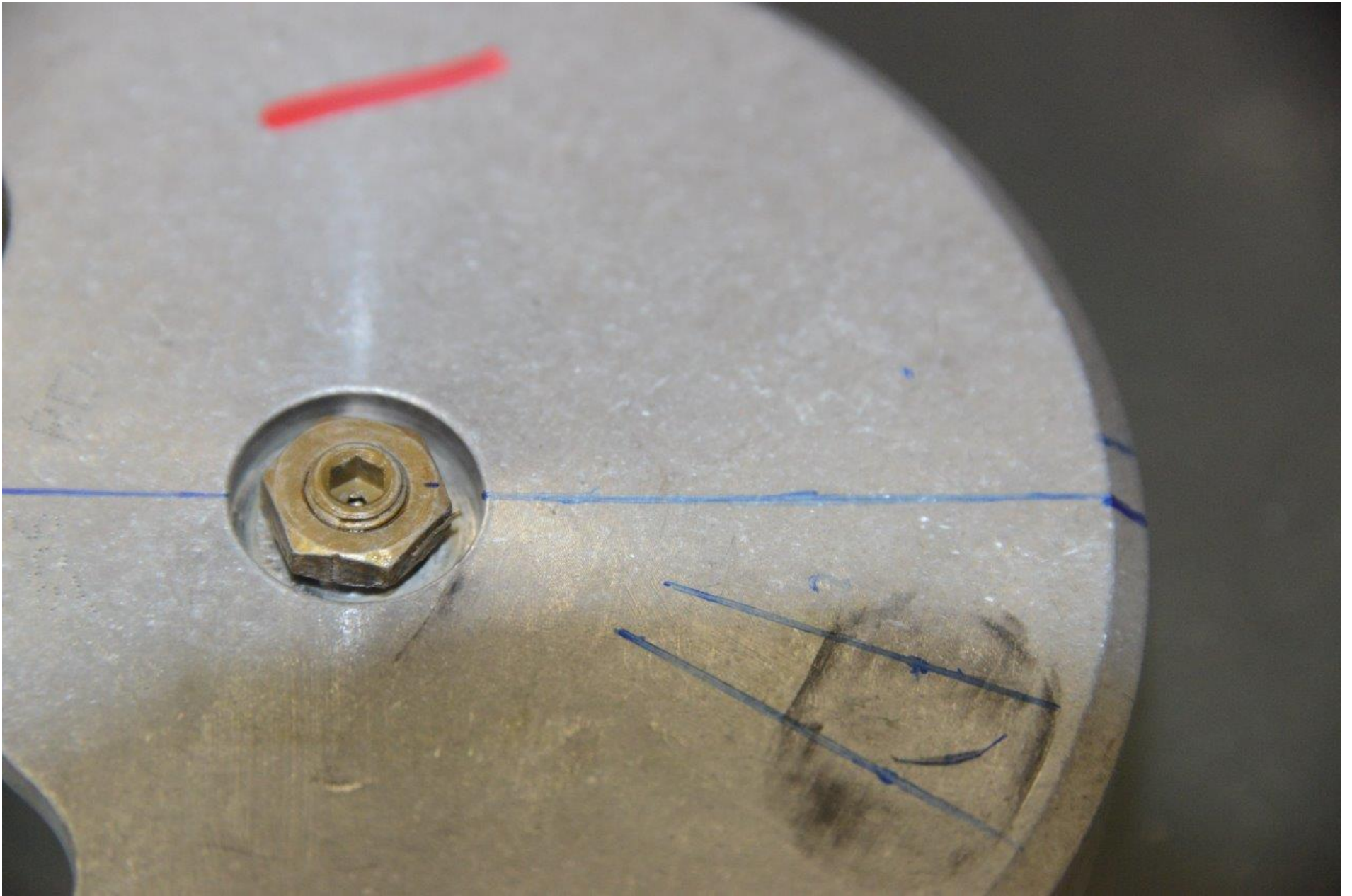


Photo 19 - View of the propeller preload plate marked no. 1.

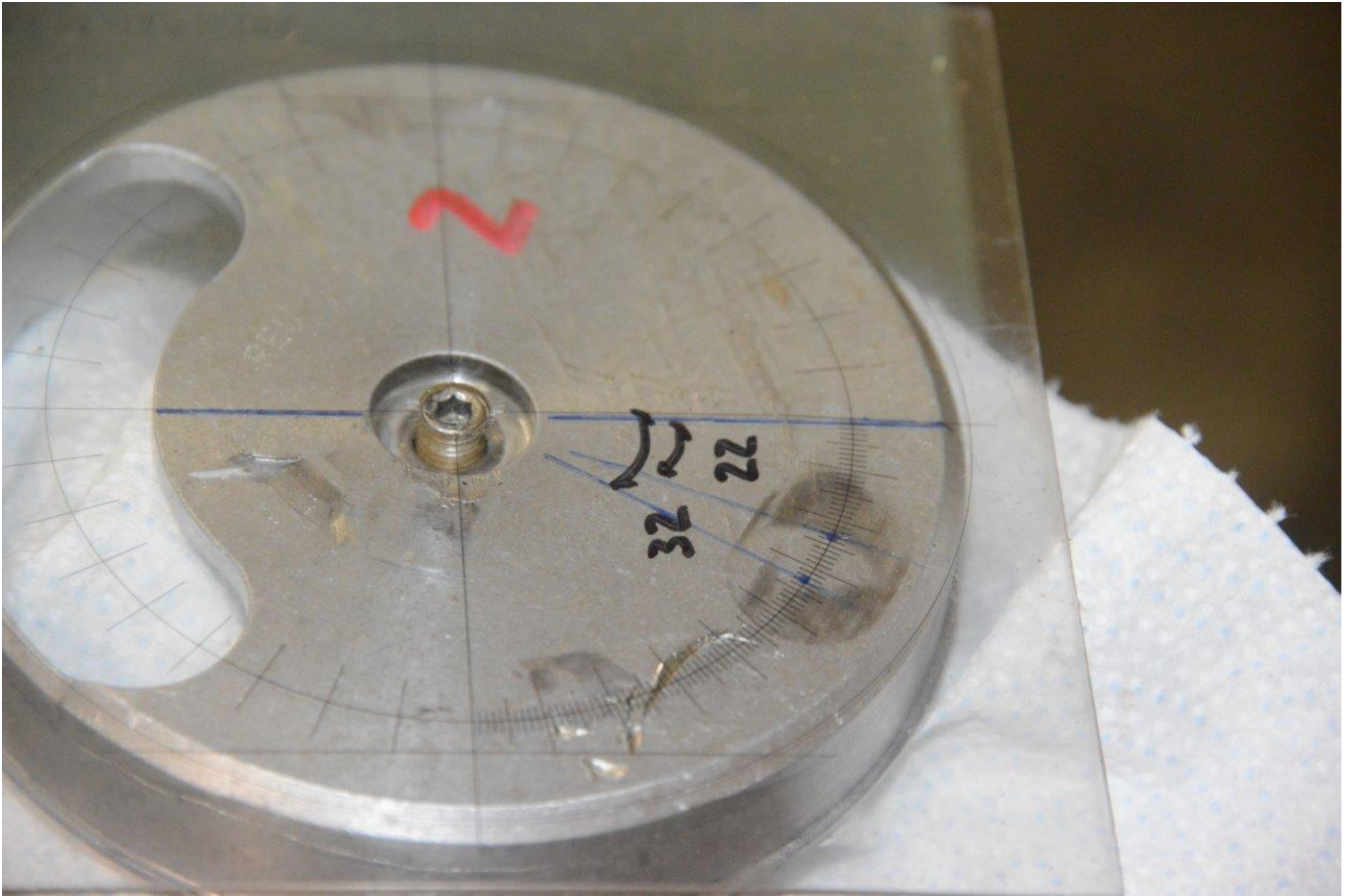


Photo 20 - View of the propeller preload plate marked no. 2.