



Photo 1 – Wreckage Recovery



Photo 2 – Cockpit Instruments



Photo 3 - Engine



Photo 4 – Photo of the Engine



Photo 5 – Fuel Selector



Photo 6 – Right Side of Wreckage (FAA photo)

Date & Time: Thu Jan 29 11:32:44 CST 2015
Position: 033°57'42.5"N / 096°36'11.4"W
Altitude: 620ft
Azimuth/Bearing: 196° S16W 3484mils (Magnetic)
Elevation Angle: -28.2°
Horizon Angle: +02.9°
Zoom: 1X



Photo 7 – Left Wing

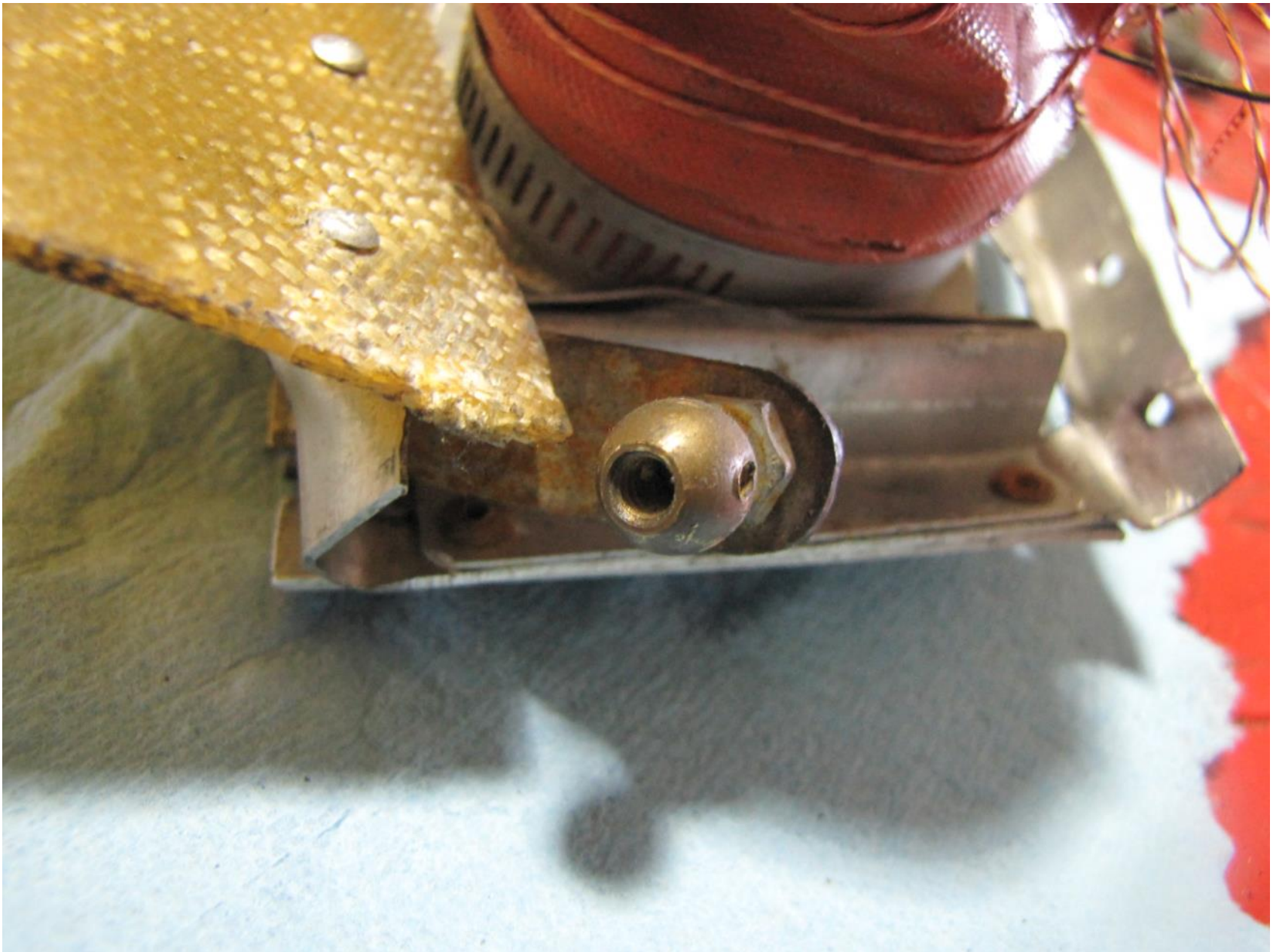


Photo 8 – Carburetor Heat Gate Actuator Arm



Photo 9 – Carburetor Heat Cable