



Photo 1 – Initial Building Impact



Photo 2 – Building Damage

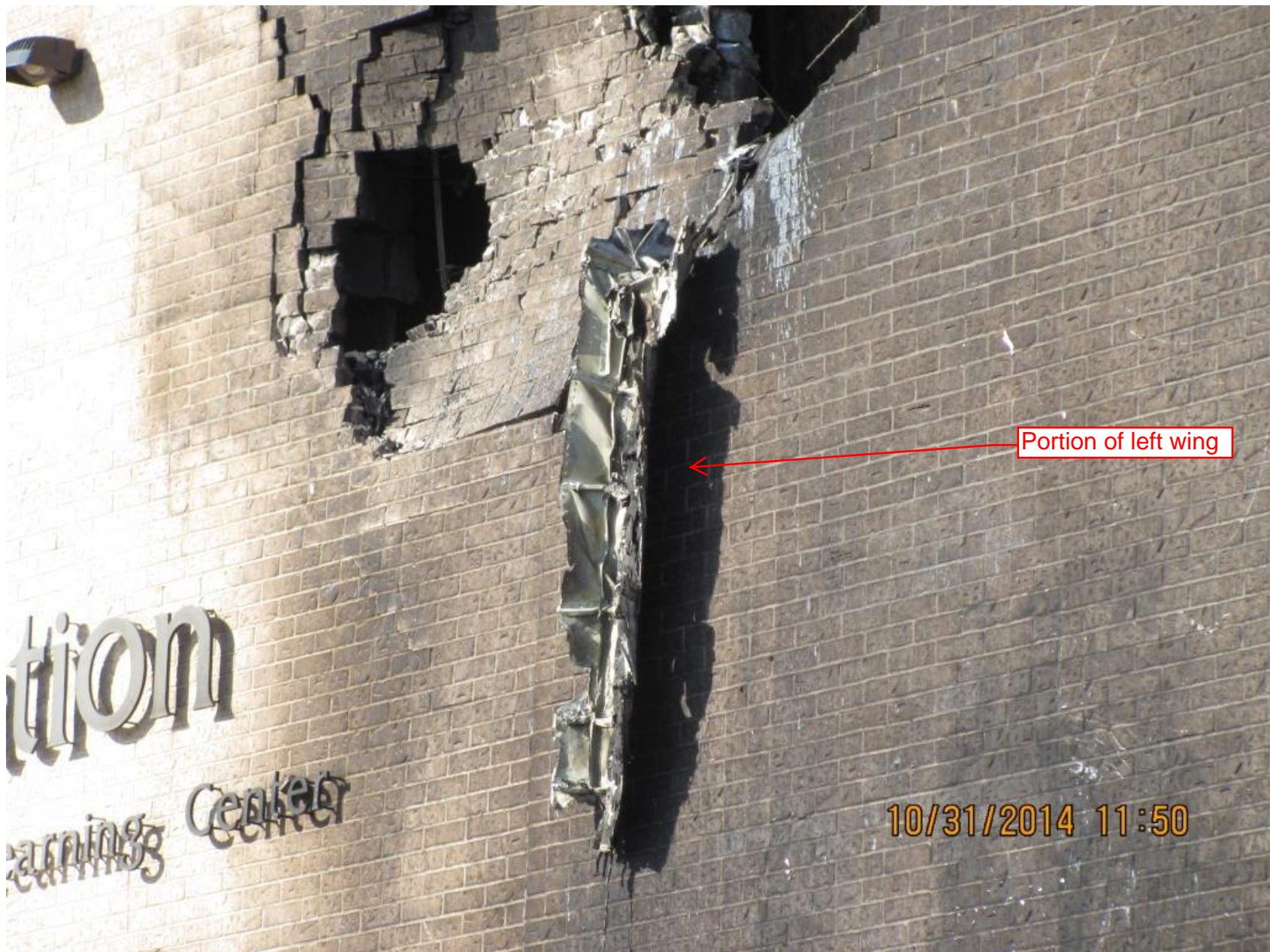


Photo 3 – Left wing



Photo 4 – Aerial view of impact point



Photo 5 – Aerial view of accident site



Photo 6 – Aerial view of accident site



Photo 7 – Aerial view of accident site



Photo 8 – Main wreckage



Photo 9 – Main wreckage



Photo 10 - Tail



Photo 11 – Left engine and propeller



Photo 12 – Right engine and propeller