



Pedestrian SIR-Highway Accident Brief

Scene photographs

Riverdale, Maryland

HWY16SH009

(6 pages)



Photo #1: Front of striking vehicle showing point of impact.



Photo #2: Closeup of impact damage to the striking vehicle



Photo #3: Overhead view of damage to windshield caused by impact with pedestrian

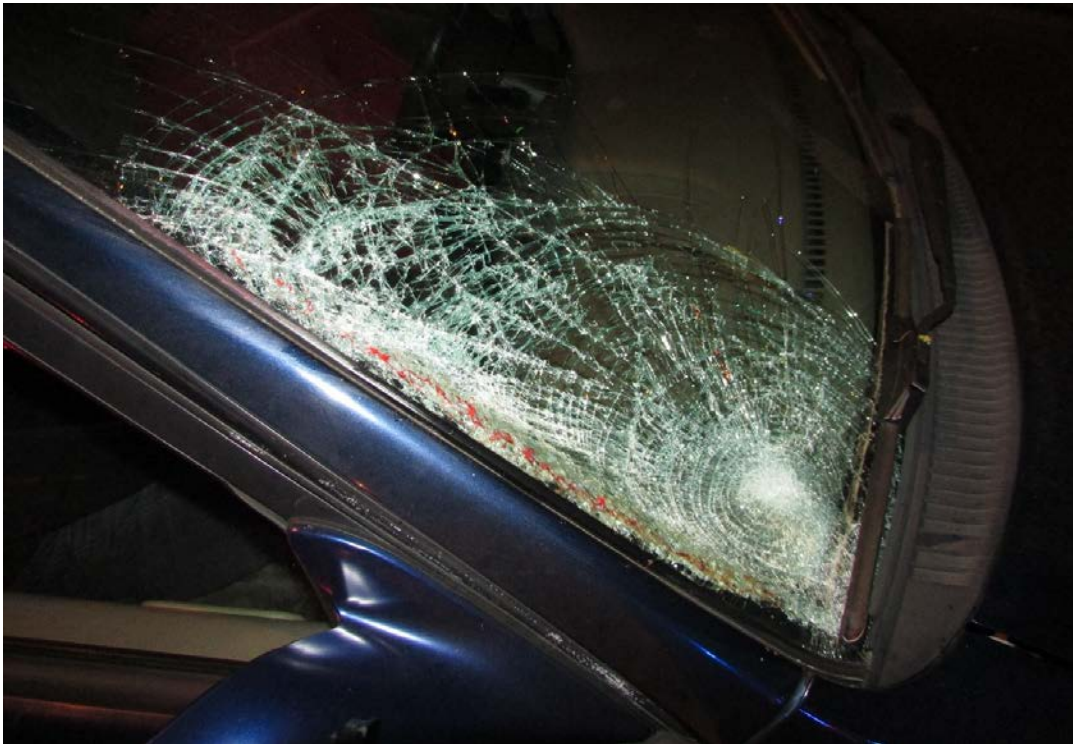


Photo #4: Closeup of windshield damage caused by the impact with the pedestrian



Photo #5: Closeup of scratches on hood of striking vehicle



Photo #6: Debris field and area of final rest along roadside.

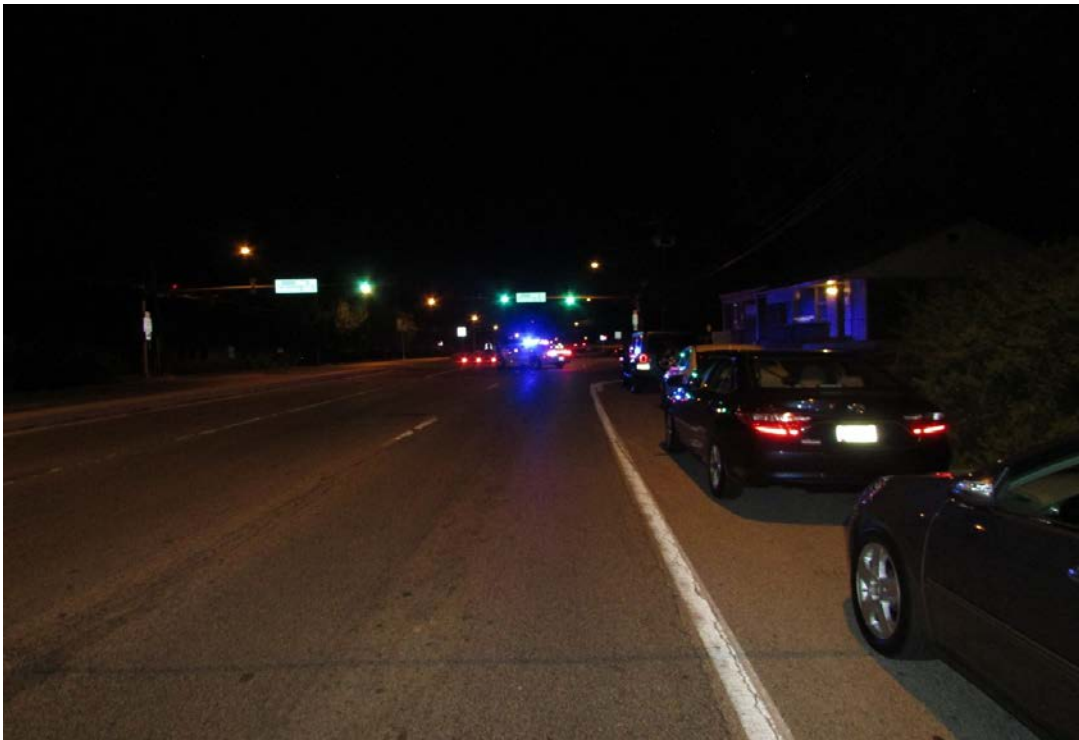


Photo #7: Shows the direction of travel and the approach to the crash intersection by the striking vehicle.



Photo #8: Daytime photo showing the direction of travel of striking vehicle and approach to the crash intersection.



Photo #9: Daytime photograph of the intersection showing the direction of the approach of the pedestrian.