



**Photo 1 – Runway 18 Landing Gear Wheel Ground Scars**





**Photo 2 –Runway 18 Departure End Fence and Ground Scar**





**Photo 3 –Aircraft During Recovery**





**Photo 4 – Runway 18 Grass Length**





**Photo 5– Tailcone**





**Photo 6 –Tailcone Flight System Components**





**Photo 7 – Tailcone Flight System Components**





**Photo 8 – Scat Host Used for Air Intake Hose to Carburetor**





**Photo 9 - Scat Host Used for Air Intake Hose to Carburetor**





**Photo 10 – Fuel Hose Leading to Carburetor**





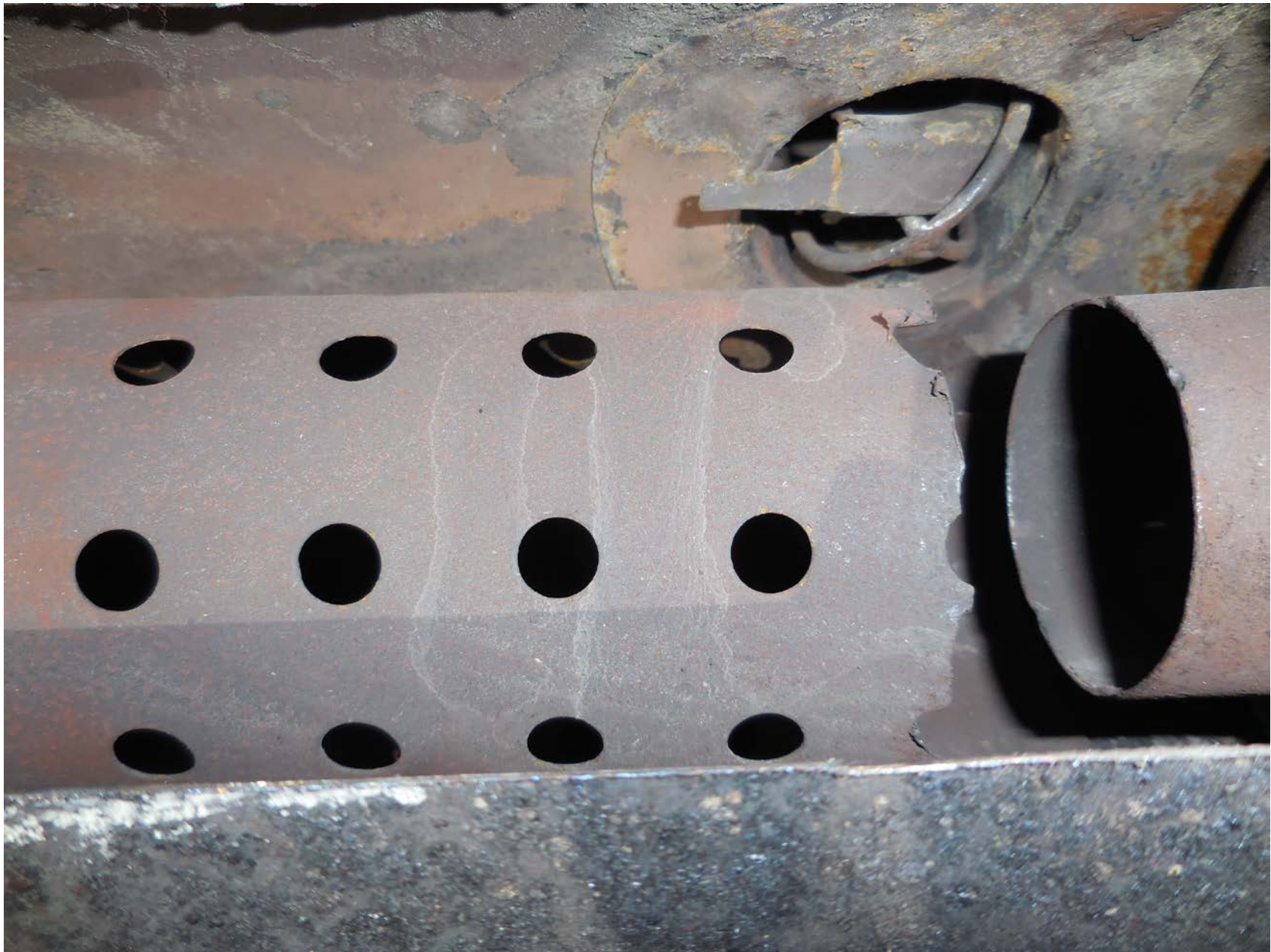
**Photo 11 – Heat Exchanger Housing/Muffler**





**Photo 12 – Heat Exchanger/Muffler Interior Showing Broken Part**





**Photo 13 – Heat Exchanger with Obstructed Exhaust from Broken Parts**





**Photo 14 – Heat Exchanger Broken Parts**





Photo 15 – Carburetor Exterior





**Photo 16 – Carburetor Brass Float and Displacement**





**Photo 17 – Carburetor Throttle Valve to Body Gap**





**Photo 18 – One of Two Propeller Blades**





**Photo 19 – Two of Two Propeller Blades**





**Photo 20 – Fuel Selector**





**Photo 21 – ELT Mounting Tray**