



Photo 1 – Right Side View of Main Wreckage – Courtesy of FAA



Photo 2 - Rear View of Main Wreckage – Courtesy of FAA



Photo 3 - Close Up View of Right Side – Courtesy of FAA



Photo 4 - Leading Edge of Right Wing – Courtesy of FAA



Photo 5 – Right Main Landing Gear – Courtesy of FAA



Photo 6 – Left Main Landing Gear – Courtesy of FAA



Photo 7 – Close Up of Right Side – Courtesy of FAA



Photo 8 – Propeller, Throttle, and Mixture Levers – Courtesy of FAA



Photo 9 – Pilot’s Side Switch Panel – Courtesy of FAA

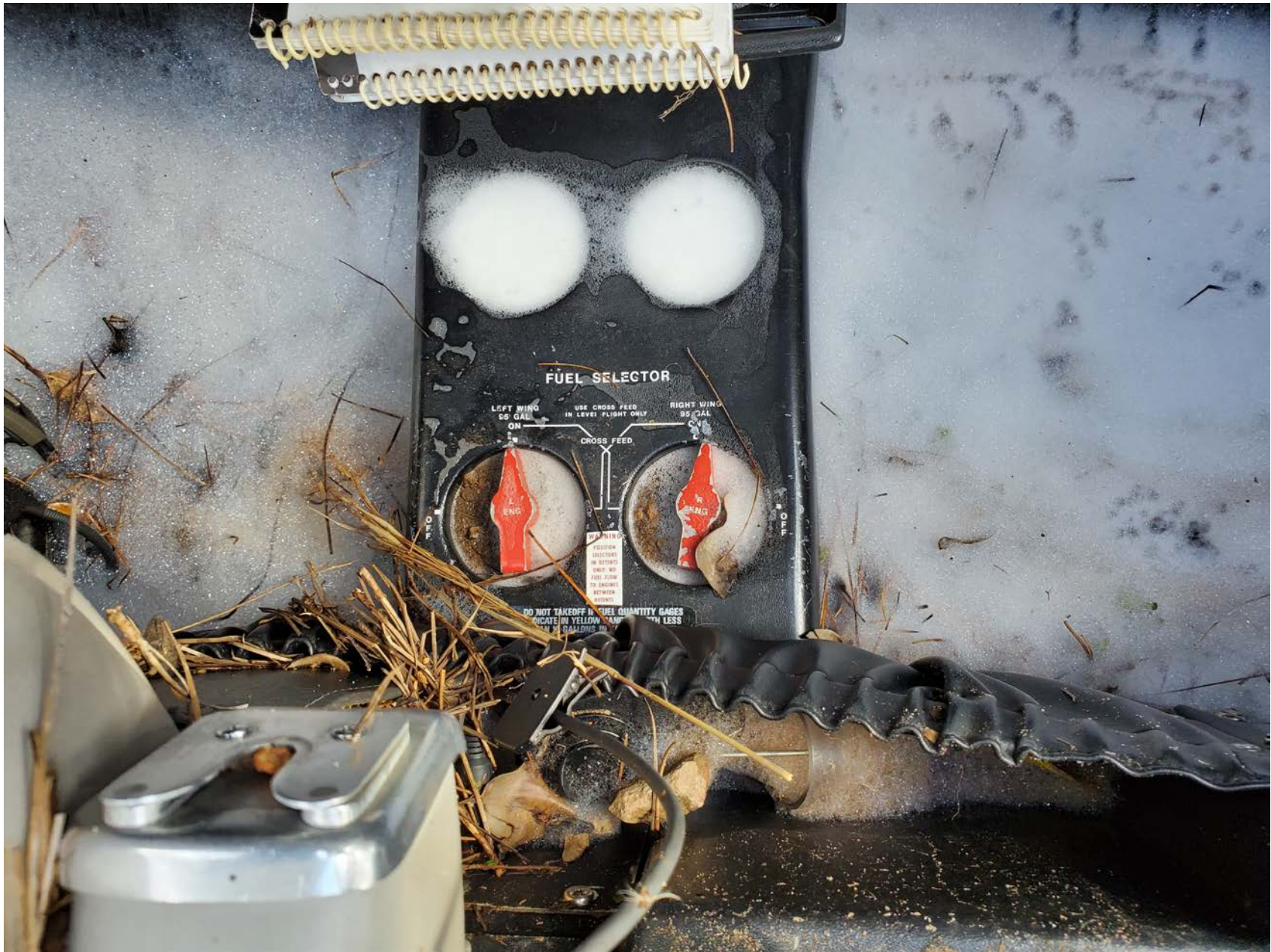


Photo 10 – Fuel Selectors – Courtesy of FAA



Photo 11 – Accident Site After Wreckage Recovery – Courtesy of FAA

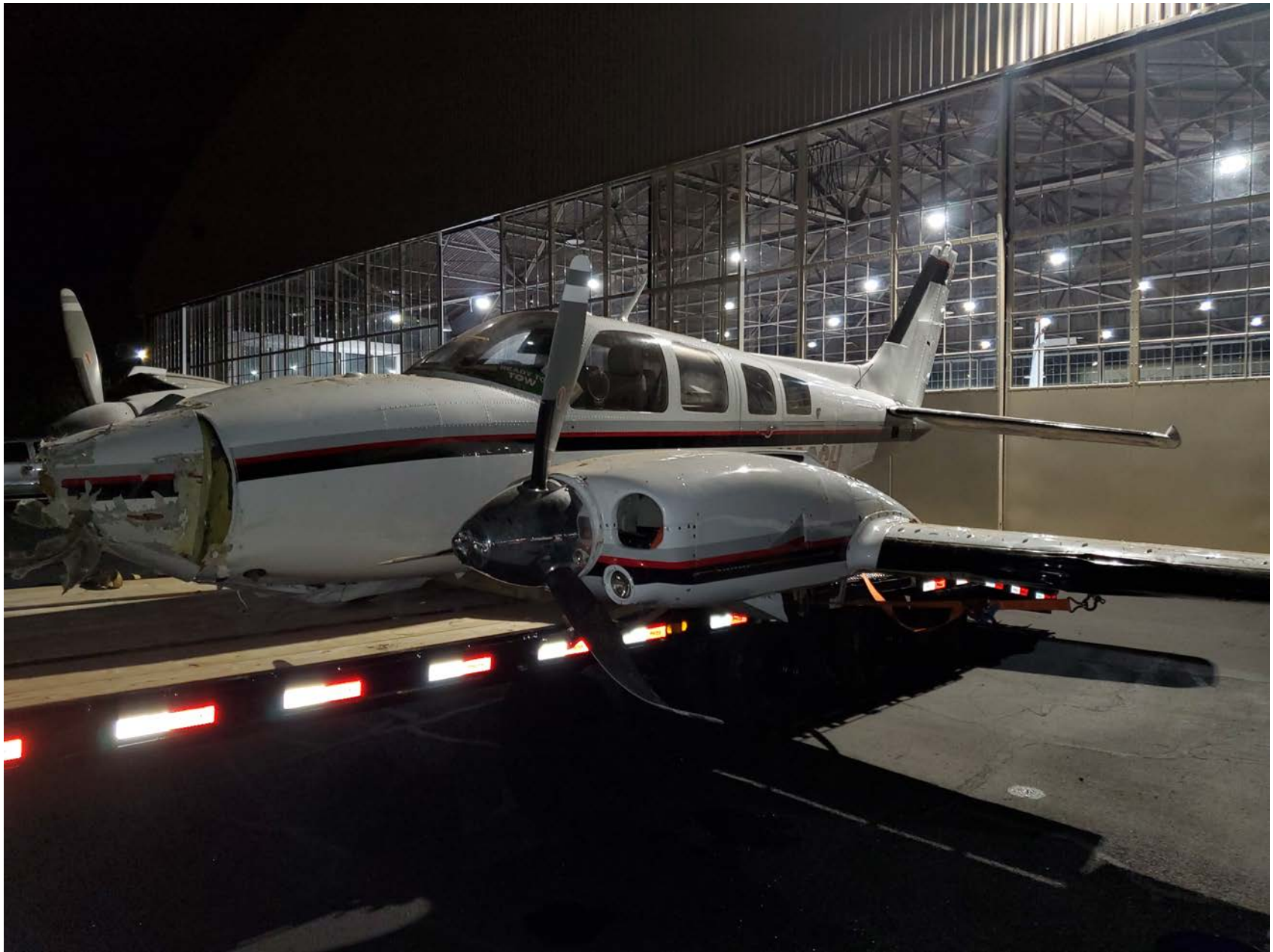


Photo 12 – Main Wreckage – After Recovery