

Figure 1: Map

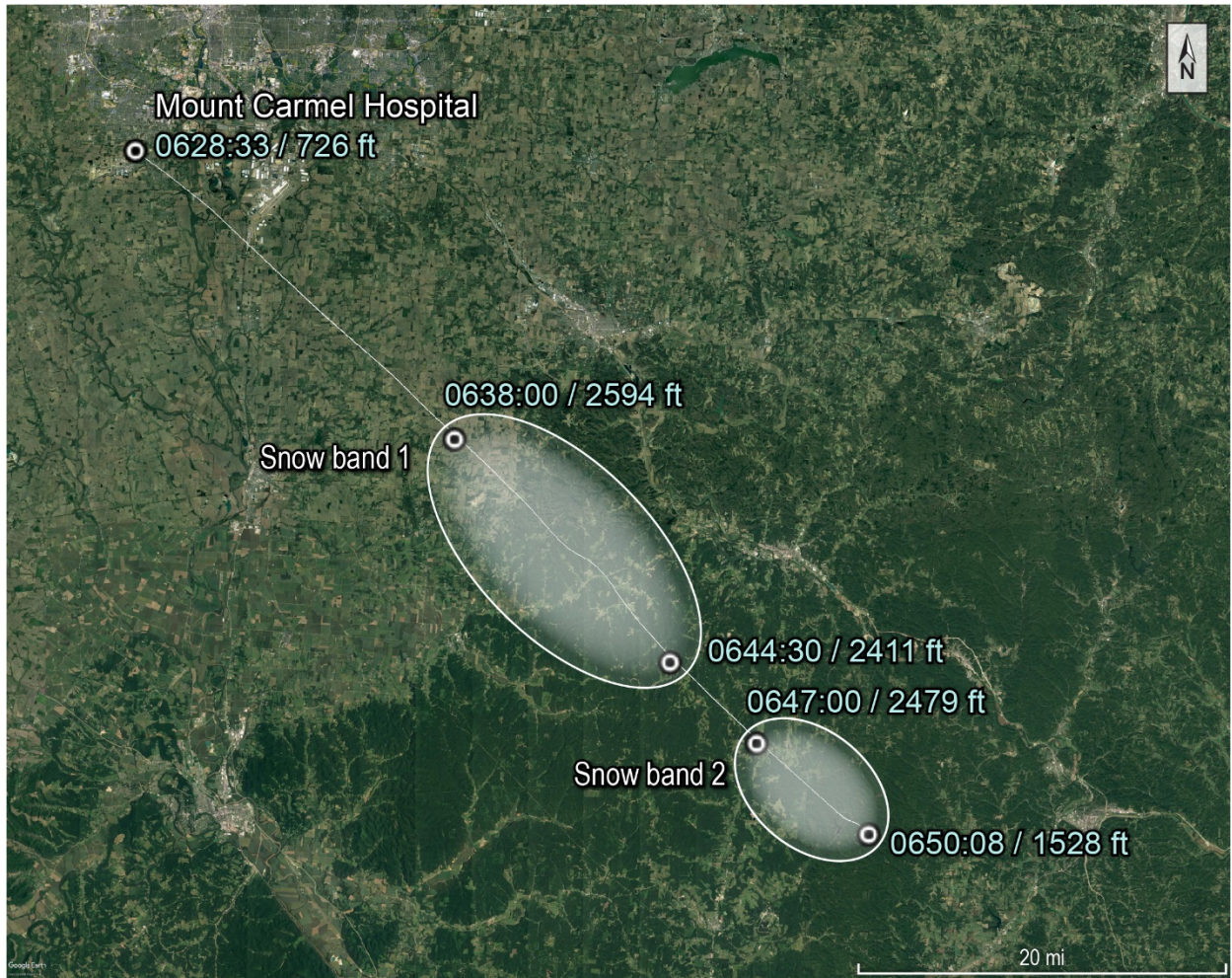


Figure 2: Map with Snow bands present

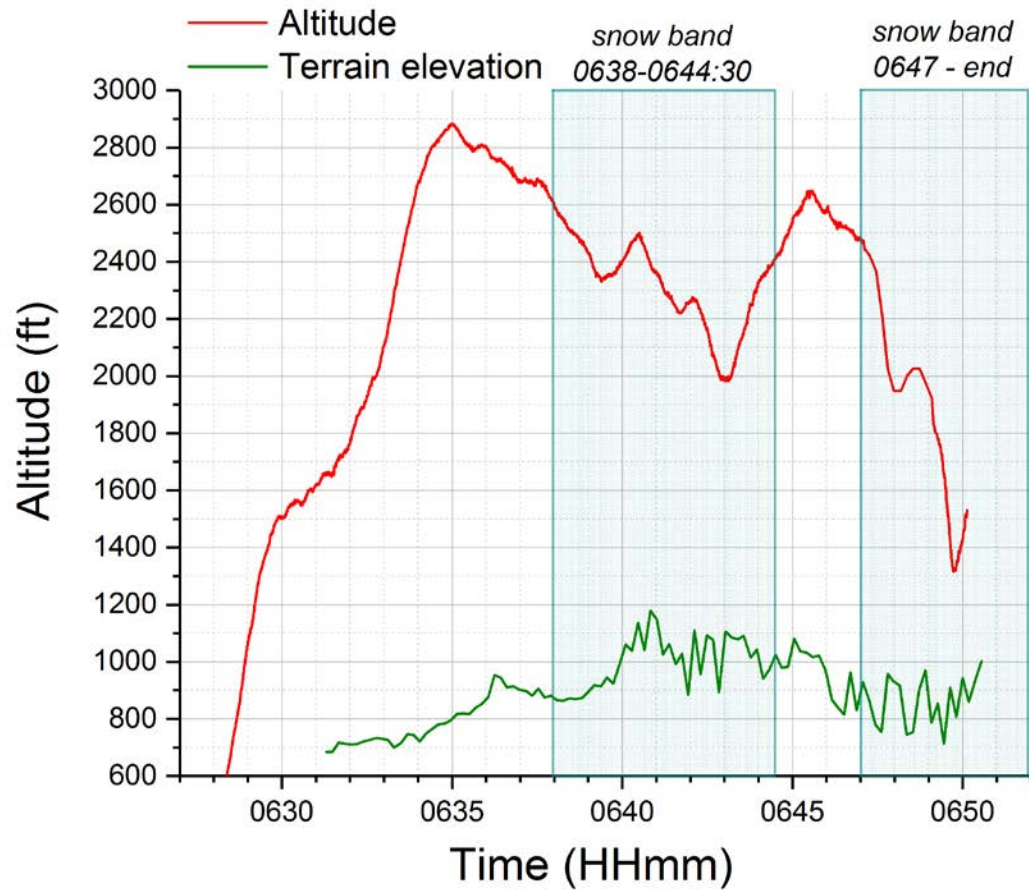


Figure 3: Graph showing altitude during flight



Figure 4: Map showing end of flight path



Figure 5: Helicopter courtesy of The Columbus Dispatch

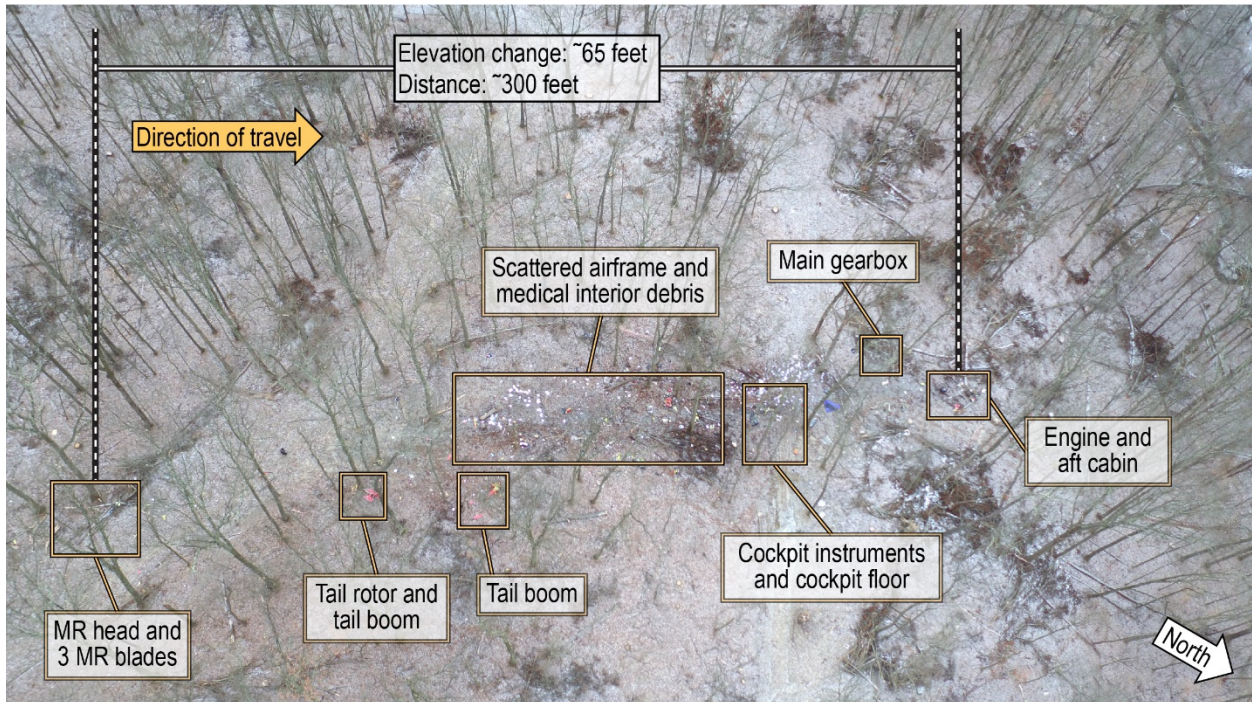


Figure 6: Accident site; photo courtesy of Ohio State Highway Patrol; edited by NTSB



SURVIVAL FLIGHT

Quick Reference Guide:

1. No paper consent forms required-all done on our iPad.
2. Only need a copy of the patients' chart in our envelope.
3. We can be dispatched **prior** to having an accepting physician or facility.
4. We allow a **3rd rider** to accompany the patient.
5. Our weather minimums are different, if other companies turn down the flight for weather-**CALL US**. If we can fly to you safely and take the patient safely to another facility...
WE WILL.
6. We can transfer to **ANY** facility.
7. Patient girth is more important vs. weight in flight consideration. Our dispatch can help you with this.

DISPATCH

Base Clinical Manager, SF13

Office:

Base Clinical Manager, SF14

Office:

Figure 7: "Quick Reference Guide" distributed by Survival Flight

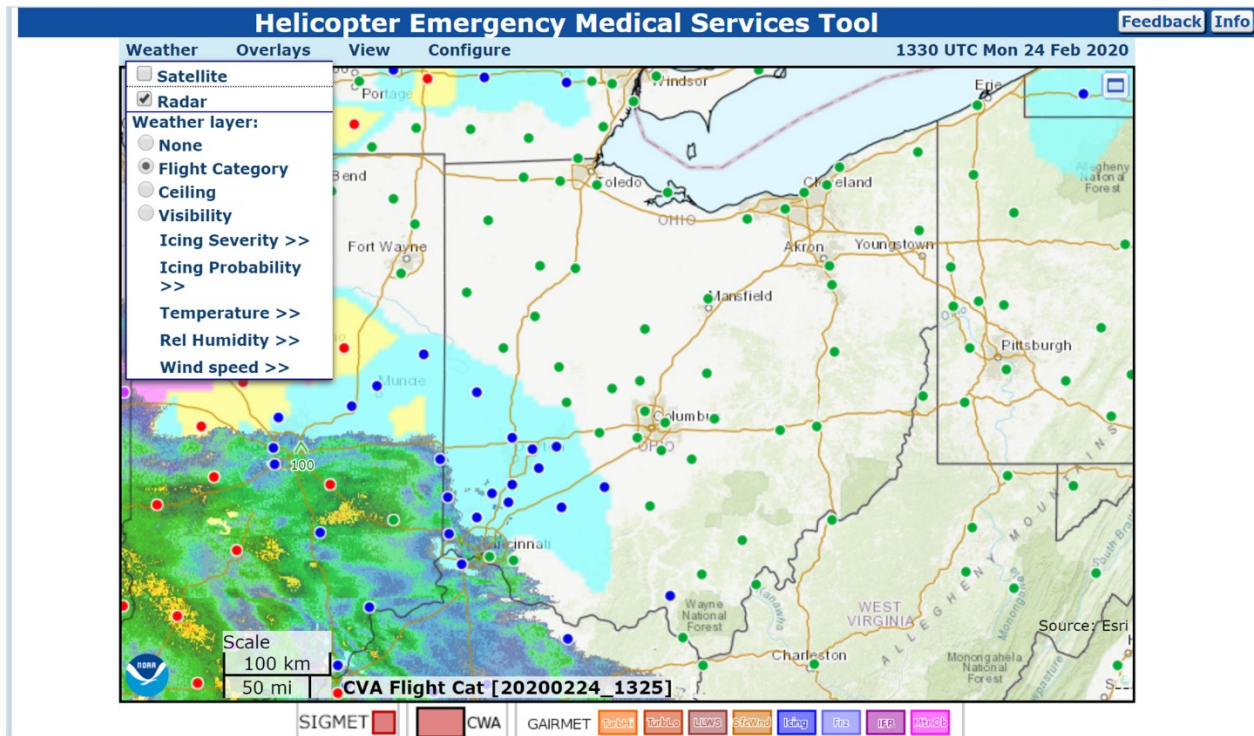


Figure 9: HEMS Weather Tool default setting with flight category and radar precipitation selected.

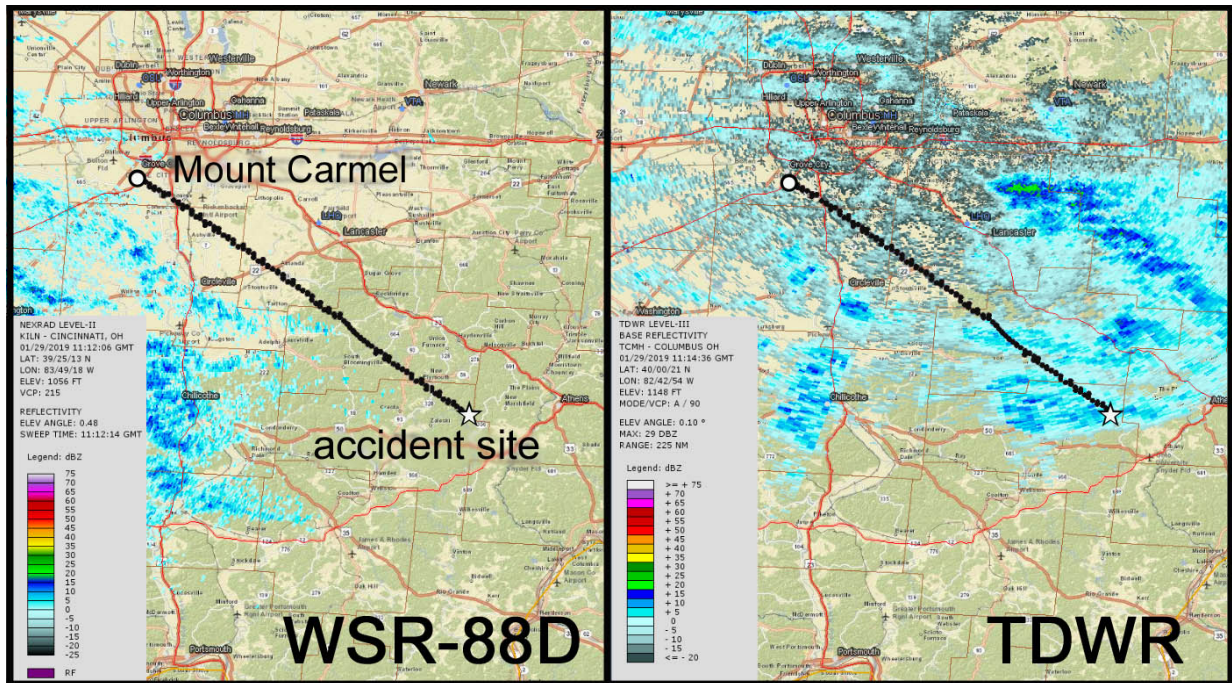


Figure 10: Comparison of WSR-88D data vs. TDWR data at the time of the flight request

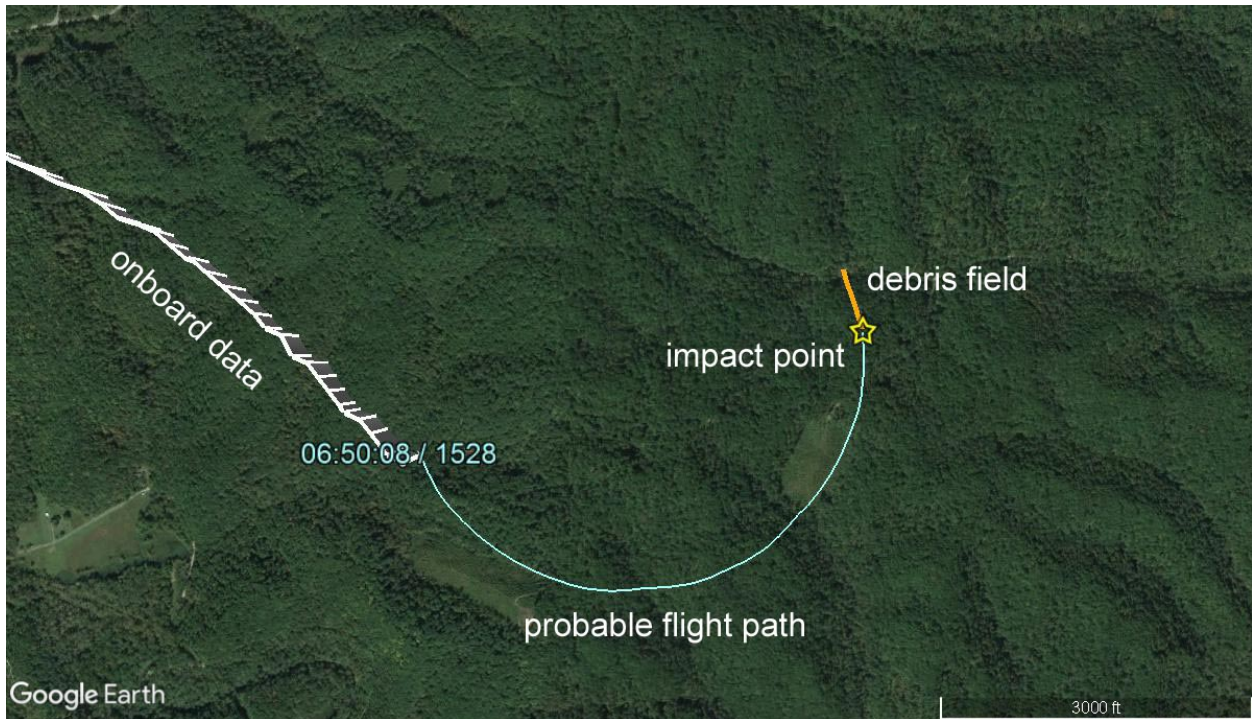


Figure 11: Map with heading change