

NTSB Docket Item  
DCA-05-MR-009  
Metrolink Derailment  
Glendale, California  
January 26, 2005

Pacific Energy Group Spill Exercise  
Documentation from November 6, 2003  
Table Top Drill  
(Pipeline)

**ATTACHMENT B**  
**SPILL EXERCISE DOCUMENTATION**  
**AND FIREMEN TRAINING**

National Preparedness for Response Exercise Program

# SPILL MANAGEMENT TEAM TABLETOP EXERCISE

## CERTIFICATION & DOCUMENTATION FORM

for

### **PACIFIC ENERGY GROUP, LLC**

Long Beach, California

November 6, 2003



Prepared by  
**DOWCAR ENVIRONMENTAL MANAGEMENT, INC.**



**The Oil Pollution Act of 1990 and U.S. DOT RSPA Compliance**

*Spill Management Team TableTop Exercise*

**CERTIFICATION & DOCUMENTATION FORM**

**For**

**PACIFIC ENERGY GROUP, LLC**

Long Beach, California

**TABLE of CONTENTS**

---

---

**Section No.:**

**Description:**

- 
- |           |   |
|-----------|---|
| <i>1.</i> | <i>Introduction</i>   |
| <i>2.</i> | <i>Certification &amp; Documentation<br/>Form</i>           |
| <i>3.</i> | <i>Written Documentation of<br/>Exercise</i>                |
| <i>4.</i> | <i>Photo Documentation of Exercise</i>                      |
| <i>5.</i> | <i>Spill Management Team Tabletop<br/>Exercise Scenario</i> |

**This is an**

*Oil Spill Response*

**SPILL MANAGEMENT TEAM**  
**TABLETOP EXERCISE**

**As Required by**

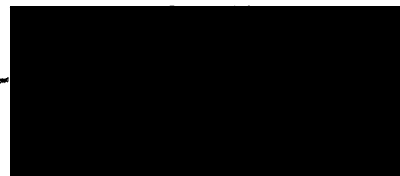
The Oil Pollution Act of 1990 Section 4202(1) and DOT – Research  
Special Programs Administration 49 CFR Part 194 and  
as Outlined by the

***NATIONAL PREPAREDNESS for RESPONSE***  
***EXERCISE PROGRAM***

**For**

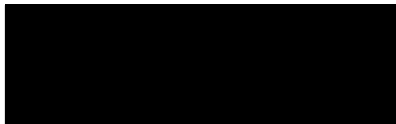
**PACIFIC ENERGY GROUP, LLC**  
**Long Beach, California**

**November 6, 2003**



December 29, 2003

Mr. Mark Reese



Re: *OPA'90 National Preparedness for Response Program (PREP)  
Certification and Documentation Form  
Spill Management Team TableTop Exercise  
November 6, 2003*

*Dear Mr. Reese:*

Please find enclosed our completed Certification and Documentation Form as per the **Oil Pollution Act of 1990** compliance with the National Preparedness for Response Program (PREP) for those facilities that are required to prepare and maintain a U.S. DOT RSPA Facility Response Plan for their Facility.

As per the OPA'90 PREP program, plan holders are required to conduct *One (1) Spill Management Team TableTop Exercise* on an Annual Basis. Once every three years, this Annual TableTop Exercise should be based on the Worst Case Scenario as described in Pacific Energy Group, Inc.'s Facility Response Plan.

This is to Certify that you have Successfully met your Annual OPA'90 PREP Requirement by conducting a Spill Management Team TableTop Exercise at your Facility and meet all Stated Objectives (see attached).

Very truly yours,  
**DOWCAR Environmental Management, Inc.**

Dowann B. Oskins  
Vice President

CJO/db

enclosure

————— " THE TOTAL SOLUTION LEADER " —————  
OIL/HAZMAT SPILL RESPONSE TRAINING & ENVIRONMENTAL CONSULTATION  
WORLDWIDE

**PACIFIC ENERGY GROUP, LLC**  
**DOMINGUEZ CHANNEL SPILL INCIDENT**

*OPA'90 & US DOT RSPA Compliance Met  
for the 2003 Annual*  
**SPILL MANAGEMENT TEAM TABLETOP EXERCISE  
OBJECTIVES**

- \* Comply with Section 4202(a) of the Oil Pollution Act of 1990 & DOT-Research Special Programs Administration's - 49 CFR Part 194's Federally Mandated Oil Pollution Response Exercise Requirements to conduct an Annual Spill Management Team Tabletop Exercise to Test PACIFIC ENERGY GROUP'S Spill Response Preparedness Program for an Oil Spill Incident Scenario, based upon its Facility Response Plan.
- \* Design and Develop NEW Oil Spill Response Strategies for Oil Spill Emergency Response Incidents as the result of a Oil Pipeline Rupture & Discharge of Crude Oil and the Subsequent Accidental Discharge of Crude Oil into Dominguez Channel & Long Beach, Harbor.
- \* Practice PACIFIC ENERGY GROUP'S Spill Management Team's Incident Command System to include the Unified Command Function in the event of an Accidental Discharge of Oil into Dominguez Channel located at Long Beach, California.
- \* Develop, Improve and Establish Working Relationships and Protocols with Local, State & Federal Authorities regarding a Potential Oil Spill Emergency Response Incident.
- \* Verify & Update Available Outside Support Resources to include Oil Spill Removal Organizations, etc. for PACIFIC ENERGY GROUP in regard to a Small, Medium & Worst Case Volume Discharge Scenario of Oil into Dominguez Channel & Long Beach Harbor.
- \* Explore Alternative Oil Spill Containment & Cleanup Response Strategies regarding a Discharge of Oil into Dominguez Channel & Long Beach Harbor.
- \* Establish a Greater Understanding of Individual Roles & Responsibilities of PACIFIC ENERGY GROUP'S Spill Management Team in the Case of an Oil Spill Emergency Response Incident.
- \* Test PACIFIC ENERGY GROUP'S OPA'90 & DOT/RSPA's Facility Response Plan as it relates to this Oil Spill Emergency Response Incident Scenario.

# Pacific Energy Group, LLC

Long Beach, California

## SPILL MANAGEMENT TEAM TABLETOP EXERCISE

### Certification and Documentation Form

---

1. Date(s) Performed *November 6, 2003*
2. Exercise or Actual Response? *EXERCISE*
- If an Exercise, Announced or Unannounced?  
(See Attached Scenario) *ANNOUNCED*  
*SPILL MANAGEMENT TEAM  
TABLETOP EXERCISE*
- Pacific Energy Group, LLC  
Long Beach, California  
Dominguez Channel Spill Incident  
Complete Rupture*
3. Location of Tabletop: *TRAINING FACILITIES*  
*Long Beach Hilton Hotel  
701 W. Ocean Blvd.  
Long Beach, California*
4. Time started: *08:00 Hours*  
Time Completed: *14:35 Hours*
5. Response Plan Scenario used (check one):
- Average Most Probable Discharge (Small)*  
 *Maximum Most Probable (Medium)*  
 *Worst Case Discharge*  
*Size of (Simulated) Spill: 4500 bbls.*
6. Describe how the following Objectives were exercised:
- a.) Spill Management Team's Knowledge of the Oil Spill Response Plan:

*Selected Portions of the Pacific Energy Group, LLC's Facility Response Plan for this Scenario, along with Selected Portions of the Pacific Energy Group, LLC's Emergency Response Action Plan were Utilized as Guidelines to Conduct this SMT Tabletop.*



**b.) Proper Notifications:**

*The Notification List of Required Contacts along with appropriate Telephone Numbers were obtained from the Pacific Energy Group, LLC's Facility Response Plan and the Emergency Response Action Plan listed under Emergency Notification Sections:*

*Emergency Notification Telephone List  
Pager, Cellular and Home Phone Numbers  
Downstream Notifications*

*Additional Notification Contacts and Sequence Procedures were derived as a result of Spill Management Dialogue during the Exercise.*

**c.) Communications System:**

*The Communications System utilized during this Spill Management Team Tabletop Exercise Consisted of several cellular Telephones, Facsimiles and Internet access, which were used for Internal/External Notification purposes and to obtain additional information.*

**d.) Spill Management Team's ability to access Contracted Oil Spill Removal Organizations.**

*Pacific Energy Group, LLC – Long Beach, CA has contracted with the following Oil Spill Removal Organizations to Respond to Oil Spill Incidents that may occur at the Pacific Energy Group, LLC Facility in Long Beach, California.*

*Ancon Marine  
Long Beach, CA  
Contact: Pete Esparza*

*Two Representatives from this OSRO actively participated in the SMT Tabletop.*

**e.) Spill Management Team's ability to Coordinate Spill Response with Federal On-Scene Coordinator, State and Applicable Agencies.**

*All Coordination of Spill Response Procedures and Strategies was Conducted through the use of Telephone Communications with the National Response Center and Face to Face Communications with California Fish & Game Representatives and US Coast Guard personnel.*

*Petty Officer Scott Garcia of the US Coast Guard simulated the role of the Federal On-Scene Coordinator (FOOSC) in the Unified Command Structure of the Incident Command System for this exercise.*

*Warden Mike McDermott of California Fish and Game/OSPR simulated the role of the State On-Scene Coordinator (SOSC) in the Unified Command Structure of the Incident Command System for this Exercise.*

*Both the FOSC and the SOSC Physically and Verbally Coordinated all Spill Response efforts with the Pacific Energy Group, LLC's Qualified Individual, Mr. Art Diefenbach.*

f.) **Spill Management Team's Ability to Access Sensitive Site and Resource Information In The Area Contingency Plan.**

*The Pacific Energy Group, LLC's Spill Management Team was **able to Access Sensitive Site & Resource Information** during this SMT Tabletop Exercise because of availability of the Area Contingency Plan developed by the US Coast Guard and California Fish and Game that includes information for the Long Beach, California Area.*

*The following organizations are the primary Contacts for any Wildlife issues that might arise.*

**Fort MacArthur Wildlife Rescue**  
**International Bird Rescue**

7. **Identify which of the 15 Core Components of your Oil Spill Response Plan were Exercised during this SMT Tabletop Exercise:**

*The following Core Components of Pacific Energy Group, LLC Facility Response Plan were Exercised during this Spill Management Team Tabletop.*

**Component No. 1 - NOTIFICATIONS:**

*This Component was **Successfully Tested and Completed** by Utilizing Actual Telephone, Facsimile and Internet Communications.*

**Component No. 2 - STAFF MOBILIZATIONS:**

*The Personnel from the following Companies, Organizations and Agencies were Mobilized during this Spill Management Team Tabletop Exercise.*

- \* Pacific Energy Group, LLC Spill Management Team Members
- \* US Coast Guard
- \* California Fish and Game/OSPR
- \* DOWCAR Environmental Management, Inc.
- \* Axiom Medical
- \* Ancon Marine
- \* ACT I

**A Total of 48 Personnel Actively Participated in this Exercise.** (See attached roster)

---

---

**Component No. 3 - ABILITY TO OPERATE WITHIN THE RESPONSE MANAGEMENT SYSTEM DESCRIBED IN THE PLAN:**

*Pacific Energy Group, LLC's Spill Management Team utilized the National Interagency Incident Management System's Incident Command System for its Response Management System for this Spill Management Team Tabletop Exercise and all Emergency Response Spill Incidents. (See Pacific Energy Group, LLC's ICS Chart)*

**a.) UNIFIED COMMAND:**

**(1.) Federal Representation:**

*Petty Officer Scott Garcia of the US Coast Guard served as the Federal On-Scene Coordinator for this SMT Tabletop Exercise.*

**(2.) State Representation:**

*Warden Mike McDermott of the California Fish and Game/OSPR served as the State On-Scene Coordinator for this SMT Tabletop Exercise.*

**(3.) Local Representation:**

*No Local Representative was present for this SMT Tabletop Exercise.*

**(4.) Responsible Party Representation:**

*Mr. Art Diefenbach served as the Qualified Individual for Pacific Energy Group, LLC – Long Beach, CA functioning as the Responsible Party Representative. Mr. Bob Arellano served as the Incident Commander for Pacific Energy Group, LLC – Long Beach, CA for this SMT exercise.*

**b.) RESPONSE MANAGEMENT SYSTEM:**

*The Pacific Energy Group, LLC Spill Management Team Successfully Demonstrated the Ability to Perform within the Incident Command System which it uses as its Response Management System for Emergency Response Incidents. The specifics for each area are outlined below.*

**(1.) Operations:**

*Mr. Mel Durley functioned as the Operations Section Chief and his Staff Successfully Demonstrated the Ability to Coordinate, Direct, and Execute Tactical Operations relayed to him by the Incident Commander/Qualified Individual which were developed by the Unified Command Structure in this Spill Management Team Tabletop Exercise.*

(2.) Planning:

*The Planning Section Chief, Mr. Gerry Tywoniuk and his Staff Successfully Demonstrated the Ability to Collect, Evaluate, Disseminate and Use Information regarding the incident to (1) Understand the situation, (2) Predict the probable course of the incident, and (3) Prepare strategies and control operations. Mr. Bob Arellano, Incident Commander and Mr. Art Diefenbach, Qualified Individual were able to guide and assist the Planning Section Chief in developing a **Workable Incident Action Plan** that stressed initial Short Term Strategic & Tactical Planning to Contain, Recover and Dispose of the Simulated Oil Spill in this Exercise.*

*The Planning Chief in Conjunction with the Incident Commander and the Qualified Individual Successfully Developed Joint Planning Recommendations to meet the concerns of the Federal and State On-Scene Coordinators.*

(3.) Logistics:

*Ms. Harsha Tank, the Logistics Section Chief and Staff Successfully Demonstrated the Ability to Provide Support as required by Initial Incident Action Plan and on-going requirements from Operations, Planning, and Finance/Administration.*

*Logistics Section Team Members Successfully Delivered what Response Logistics Needs were required and Demonstrated their Ability to support the Initial Incident Action Plans and Operations, Planning, and Finance Administration.*

*Telephone, Facsimile and Internet Communications were utilized to accomplish this.*

(4.) Finance:

*Ms. Wendy Whitfield, Finance/Administration Section Chief, and her team Successfully Demonstrated the Ability to Track Costs, Claims or Procurement of Supplies & Equipment as requested by the Unified Command for this SMT Tabletop Exercise.*

(5.) Public Affairs:

*Mr. John Tsouvalas served as the **Information Officer** and wrote the Initial Press Release and obtained the necessary approvals from the Unified Command Team.*

*A mock Press Briefing was held with the Information Officer supported by the Incident Commander, the Qualified Individual, the Federal On-Scene Coordinator, and the State On-Scene Coordinator. Mr. Tsouvalas provided a comprehensive and concise overview of the spill incident.*

**(6.) Safety Affairs:**

*The Safety Officer, Mr. John Miksad Successfully Demonstrated the Ability to monitor All Simulated Field Operations and Ensure Compliance with Safety Standards by completion of a Site Safety Plan during this Spill Management Team Tabletop Exercise.*

**(7.) Legal Affairs:**

*No Legal Representation was present for this SMT Tabletop exercise.*

**Component No. 4 - DISCHARGE CONTROL:**

*The Operations Section Successfully Demonstrated the ability to Contain and Control the simulated discharge although no actual Field Operations were executed during this SMT Tabletop Exercise.*

**Component No. 5 - ASSESSMENT:**

*The Safety Officer and Operations Section Chief of the Spill Management Team Successfully Demonstrated the ability to provide an Initial Assessment of the Simulated Discharge and Continuing Assessment of the Tactical Operations.*

**Component No. 6 - CONTAINMENT:**

*The Operations Section of the Spill Management Team Successfully Simulated the ability to contain this simulated spill during this SMT Tabletop Exercise.*

**Component No. 7 - RECOVERY:**

*The Operations, Planning and Logistics Sections of the Pacific Energy Group, LLC – Spill Management Team Successfully Simulated the Ability of their Spill Response Organization to Recover the Discharged Product of Crude Oil.*

*No Actual Oil Skimmers were deployed during this SMT Tabletop.*

**7.1 On-Water Recovery**

*Pacific Energy Group, LLC Successfully Simulated the ability to conduct On-Water Recovery during this SMT Tabletop. Ms. Bea Esparza of ACT I, a representative of the contracted OSRO, was present and simulated the ability to respond and conduct On-Water Recovery.*

## **7.2 Shore-Based Recovery**

*The **Operations, Planning and Logistics Sections** of the Spill Management Team **Successfully Simulated** the Ability to Assemble and Deploy the Shore side Cleanup Resources Identified in the Pacific Energy Group, LLC's Facility Response Plan. **Mr. Pete Esparza of ACT I**, a representative of the contracted OSRO, was present and simulated the response of the OSRO to respond and conduct Shore-Based Recovery.*

## **Component No. 8 - PROTECTION:**

*The **Operations Section** of the Spill Management Team **Successfully Simulated** the ability to protect the Environmentally and Economically Sensitive Areas Identified by the Incident Commander as outlined by the Pacific Energy Group, LLC's Facility Response Plan and the Area Contingency Plan.*

### **8.1 Protective Booming:**

*The **Operations Section** of the Spill Management Team **Successfully Simulated** the ability to Assemble and Deploy Sufficient Resources to Implement the Protection Strategies Necessary to Contain this Crude Oil Spill Incident.*

### **8.2 Dispersant Use:**

*This Spill Response Strategy was **Not Addressed** in this SMT Tabletop Exercise and is **Not an Acceptable Response Strategy for Inland Waters or Coastal Waters nearshore.***

### **8.3 In-Situ Burning:**

*This Spill Response Strategy was **Not Addressed** in this SMT Tabletop Exercise.*

### **8.4 Water Intake Protection:**

*The **Incident Commander and the Operation Section Chief** of the Spill Management Team **Successfully Simulated** their ability to Quickly Identify Water Intakes to Implement the Proper Protection Procedures to protect these Identified Water Intake Systems along the Bear River and in the path of the simulated Crude Oil Spill.*

**8.5 Wildlife Recoveries and Rehabilitation:**

*The **Incident Commander** for this SMT Tabletop Exercise **Successfully Demonstrated** his ability to Quickly Identify Simulated Wildlife Resources at Risk and Implement the Proper Protection Procedures. Two companies designated to handle wildlife issues were contacted and simulated securing their resources for any and all wildlife issues. These two companies are **Fort MacArthur Wildlife Rescue and International Bird Rescue**.*

**8.6 Population Protection:**

*The **Safety Officer** of the Spill Management Team **Successfully Demonstrated** the Ability to Quickly Identify Simulated Health Hazards associated with this Simulated Discharge of Crude Oil and Population at Risk for this Hazard and to Implement the Proper Protection Procedures as outlined by the Pacific Energy Group, LLC's Facility Response Plan.*

*A **Site Safety Plan** for this Simulated Crude Oil Spill Response Incident was generated by the Safety Officer to address Population Protection Issues.*

**8.7 Bioremediation:**

*This Spill Response Strategy was **Not Addressed** in this SMT Tabletop Exercise.*

**Component No. 9 - DISPOSAL:**

*Disposal of Recovered Crude Oil, Contaminated Water, Soil and Debris was **Not Addressed** during this SMT Tabletop and Field Equipment Deployment Exercise.*

**Component No. 10 - INTERNAL COMMUNICATIONS:**

*The Pacific Energy Group, LLC's Spill Management Team **Successfully Demonstrated** the Ability to Establish an Effective Communications System.*

*This was Accomplished during this Spill Management Team Tabletop Exercise, by the use of Telephones, Facsimiles, a Computer Network with Printers, the Internet, Large Visual Charts and Hand Written Documentation Forms.*

**10.1 Internal Communications**

*Pacific Energy Group, LLC's Spill Management Team was **Successful in Establishing** Effective Internal Communications within the Spill Response Organization through the use of Computer Integrated Documentation Forms and Large Visual Posted Charts Documenting all activities and frequent Command and General Staff meetings to keep all members abreast of the Crude Oil Spill Response Activities.*

## **10.2 External Communications**

*Pacific Energy Group, LLC's Spill Management Team was **Successful in Establishing** effective External Communications with Federal, State and Local Environmental Compliance Agencies its Corporate Offices, and additional Contractors as required during this SMT Tabletop Exercise.*

*This was **Accomplished** during this SMT Tabletop and Field Equipment Deployment Exercise, by the use of Telephones, Facsimiles and Emails.*

### **Component No. 11 - TRANSPORTATION:**

*This Component was **Not Demonstrated** during is SMT Tabletop Exercise.*

### **Component No. 12 - PERSONNEL SUPPORT:**

*The Pacific Energy Group, LLC Spill Management Team **Successfully Demonstrated** the Ability to Provide Necessary Support of All Personnel Associated with this Spill Management Team Tabletop Exercise in the following areas.*

#### **12.1 Management:**

*The Pacific Energy Group, LLC Spill Management Team and all Participating Agencies in this Tabletop Exercise **Successfully Demonstrated** the Ability to Provide Administrative Management of All Personnel involved during this Spill Management Team Tabletop Exercise.*

#### **12.2 Berthing:**

*This Component was **Not Demonstrated** during this Spill Management Team Tabletop Exercise.*

#### **12.3 Messing:**

*The Pacific Energy Group, LLC's Spill Management Team **Successfully Demonstrated** the Ability to Provide Suitable Feeding Arrangements for Personnel Involve with this SMT Tabletop Exercise by providing Lunch Meals for all participants.*



**12.4 Operational and Administrative Spaces:**

*Pacific Energy Group, LLC Spill Management Team **Successfully Demonstrated** the Ability to Provide Suitable Operational and Administrative Spaces for Personnel Involved with the Management of this Tabletop Exercise.*

*This was achieved by conducting this SMT Tabletop Exercise in a large Conference Room at the Long Beach Hilton Hotel in Long Beach, California.*

**12.5 Emergency Procedures:**

*This Component was **Not Demonstrated** during this Spill Management Team Tabletop Exercise.*

**Component No. 13 - EQUIPMENT MAINTENANCE AND SUPPORT:**

*This Component was **Not Demonstrated** during this Spill Management Team Tabletop Exercise.*

**Component No. 14 - PROCUREMENT:**

*This Component was **Not Demonstrated** during this Spill Management Team Tabletop Exercise.*

**Component No. 15 - DOCUMENTATION:**

*Pacific Energy Group, LLC Spill Management Team **Successfully Demonstrated** the ability to Document all Simulated Operational and Support Aspects of the Tabletop Exercise and to Provide Detailed Records of Decisions and Actions Taken.*

*NIIMS - ICS Computer Interactive Documentation Forms were utilized during the Spill Management Team Tabletop Exercise. **The Documentation Leader for this SMT Tabletop Exercise is maintaining all Documentation for this SMT Tabletop Exercise.***

**8. Attach Description of Lesson(s) Learned and Person(s) Responsible for Follow up of Corrective Measures.**

***Mr. Mark Reese**, Manager of Environmental Safety for Pacific Energy Group, LLC, is the Primary Person Responsible for the follow up of Corrective Measures.*

**Observation No. 1.**

*Communications between the various sections was not as good as it could be. Planning was often circumvented and Operations made decisions without their input. Finance did not get cost information they needed to track money spent. Logistics was getting requests from Operations and few from Planning.*

**Lessons Learned:**

*When any one section is not communicating well, then other sections cannot function effectively and efficiently. When a balance of responsibilities is not maintained, some sections may be carrying more responsibility than they can respond to. This can slow the whole response activity down.*

**Recommendations:**

*Provide additional training to reinforce to each section their specific role and other section's roles. Develop a flowchart that shows how information should flow. Have small meetings between sections to be sure all pertinent information is being communicated and to work out any issues.*

**Observation No. 2.**

*The Procurement Officer, located in the Finance Section, was ordering various items needed for the response and was not able to aid in tracking costs. The Logistics Section often did not know what had been procured and often did redundant work.*

**Lessons Learned:**

*The Logistics Section is the logical place for all procurement activities to take place. Having a person in Finance with this responsibility complicates securing items needed for response activities.*

**Recommendation:**

*Moving the Procurement Officer to the Logistics Section may relieve this situation. Better communications between the two sections may also help.*

**Observation No. 3.**

*Tracking costs was difficult. Finance was not in the loop when expenditures were made. When numbers were provided, Finance was often given different prices from the same section for the same item.*

---

=====  
**Lessons Learned:**

*In a real situation, the Finance Section would be making all payments and would need notice of expenditures in order to keep things moving smoothly.*

**Recommendations:**

*Have one person from each section communicate expenditures and pricing to the Finance Section as they are incurred. With one person responsible for this, there can be no question about where to go in tracking costs and obtaining numbers. Utilize email to communicate these cost figures to Finance.*

**Observation No. 4.**

*Having the Qualified Individual and the Incident Commander in the same room created some confusion as to who was in charge. This also created some overlapping of roles and responsibilities between the two positions.*

**Lessons Learned:**

*Because the Qualified Individual and the Incident Commander were in the Command Post together, other participants were somewhat unclear about who was really in charge. Since the Qualified Individual was in the room, the outside agencies were also present. This created multiple inputs instead of one directive from the Unified Command.*

**Recommendations:**

*Separate the Qualified Individual and the Unified Command Team physically from the Incident Commander and the various functional sections. Placing the Unified Command in a separate room would allow discussion about strategy to occur away from the tactical activities supervised by the Incident Commander. In addition, the question of "who's in charge" would be clear in the Command Post since the Incident Commander would be the highest ranking person in the room.*

---

**DOWCAR Representative Signature**

**DOWCAR ENVIRONMENTAL MANAGEMENT, Inc.**  
P. O. Box 1799, Ranchos de Taos, NM 87571 (USA)  
505/751-3025; fax 505/751-1418

**Date Certified: December 29, 2003**

- Retain this form for a minimum of 3 years for USCG/RSPA, MMS or 5 years for the EPA

# Pacific Energy Group, LLC

Long Beach, California

## SPILL MANAGEMENT TEAM TABLETOP EXERCISE Participant Roster

NAME	SYSTEM	POSITION
Bob Arellano	PPS	Incident Commander
John Tsouvalas	PPS	Information Officer
Robert Godoy	PEG	Communications Unit Leader
Pete Martinez	PEG	Resource Unit Leader
Josh Meineke	PEG	Resource Unit Asst. Leader
Gerry Tywoniuk	PBX	Planning Section Chief
Deb Moudy	PEG	Situation Unit Leader
Pete Esparza	Ancon Marine	OSRO Onshore
Mike DeLitta	Axiom Medical	Medical Unit Leader
Jim Hosler	PEG	Disposal Group Supervisor
Lyle Boarts	Consultant	Service Branch Director
Tom McCormick	PEG	Assistant Planning Chief
Frank Ettner	PEG	Procurement Unit Leader
Sudhir Avalakki	PEG	Demob. & Waste Mgmt. Unit Ldr.
Dan Couch	Ancon Marine	Spill Contractor
Art Diefenbach	PEG	Qualified Individual
George Good	PEG	
Karen Marvin	PEG	Documentation Officer (OPS)
Paul Northey	PT	Decontamination Group Supr.
Ruben Rendon	PEG	Support Branch Director
Frank Carden	PEG	Staging Area Manager
Tracy Moore	PEG	Ground Support Leader
Chuck Wachter	PEG	Salvage/Repair Ctrl. Group Supr.
Lora Granorsky	PEG/FDSG	Environmental Unit Leader
Maurice Jones	PEG	Shoreline Group Supervisor
Ann Goodine	PEG	Documentation Unit Leader
Lance Dobieski	PEG	Cost Unit Leader
Cliff MacNiven	PEG	Situation Officer
Eric Each	PEG	On Water Group Supervisor
Bea Esparza	ACT I	OSRO on Water
Richard Flores	ACT I	Operations
Mark Reese	PEG	Liaison Officer
Wayne Pierson	PEG	Operations

---

---

## Pacific Energy Group, LLC

Long Beach, California

### SPILL MANAGEMENT TEAM TABLETOP EXERCISE Participant Roster - Page 2

---

---

NAME	SYSTEM	POSITION
Mike Edwards	PEG	Assistant Logistics Chief
Harsha Tank	PEG	Logistics Chief
J. K. Miksad	PEG	Safety Officer
Mike McDermott	DFG/OSPR	SOSC
S. M. Moe	DFG/OSPR	State Representative
M. Durley	PEG	Operations Section Chief
David McEnany	PEG	Documentation Officer (LOG)
Guy Castro	PEG	Salvage/Repair Engineering
Mitchell Priest	USCG	Federal Agency Rep.
Carlo Chiaramontt	USCG	Federal Agency Rep.
Adriana Crasnean	CSFM	Agency Rep.
Scott Garcia	USCG	FOSC
John Bradley	H2O Environmental	Facilitator
Carl J. Oskins	DOWCAR Environmental Mgt.	Facilitator
Dee Bradley	DOWCAR Environmental Mgt.	Facilitator

**Draft Pacific Energy Group Press Release**  
**8:30 AM Thursday, November 6, 2003**

PacificTerminals LLC announced that at approximately 5:30 A.M. today a release of crude oil was detected from a 24" diameter pipeline near the intersection of Wilmington Avenue and 223rd Street in the city of Carson, California. Some oil has entered the Dominguez Channel. The pipeline has been shut down and has been isolated. Some residual oil from the pipe is still leaking. Personnel from Pacific Terminals and local agencies have responded to the spill location. The containment and clean up effort has begun. Every effort is being made to minimize the impact to both the environment and the local area residents. Crews will be working around the clock to remove the oil.

At this time we estimate the spill volume at approximately 168,000 gallons.

Pacific Terminals LLC is headquartered in Long Beach, California.

For additional information please contact Mr. John Tsouvalas at (562) 728-2312.

## PACIFIC ENERGY GROUP SMT TABLETOP ORGANIZATION

Qualified Individual – Art Diefenbach

Incident Commander – Bob Arellano  
Safety Officer – John Miksad  
Liaison Officer – Mark Reese  
Information Officer – John Tsouvalas

Planning Section Chief – Gerry Tywoniuk  
Assistant Planning Chief – Tom McCormick  
Documentation Unit Leader – Ann Goodine  
Documentation Officer (OPS) – Karen Marvin  
Documentation Officer (Logistics) – Dave McEnany  
Resource Unit Leader – Pete Martinez  
Resource Unit Assistant Leader – Joshua Meineke  
Situation Unit Leader – Debra Moudy  
Situation Officer – Cliff MacNiven  
Environmental Unit Leader – Lora Granovsky  
Demobilization & Waste Management Unit Leader – Sudhir Avalakki  
Legal Specialist – Lynn Wood

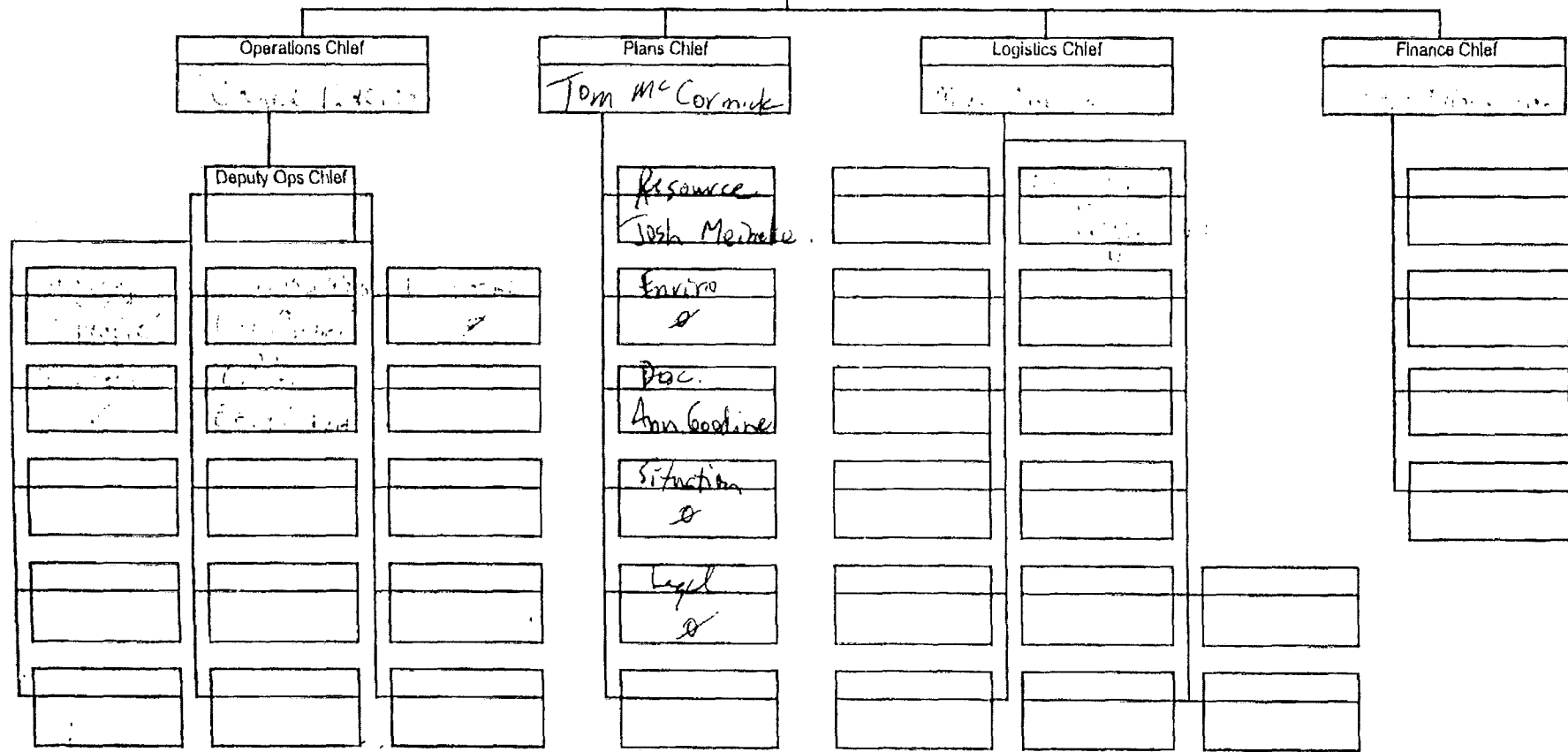
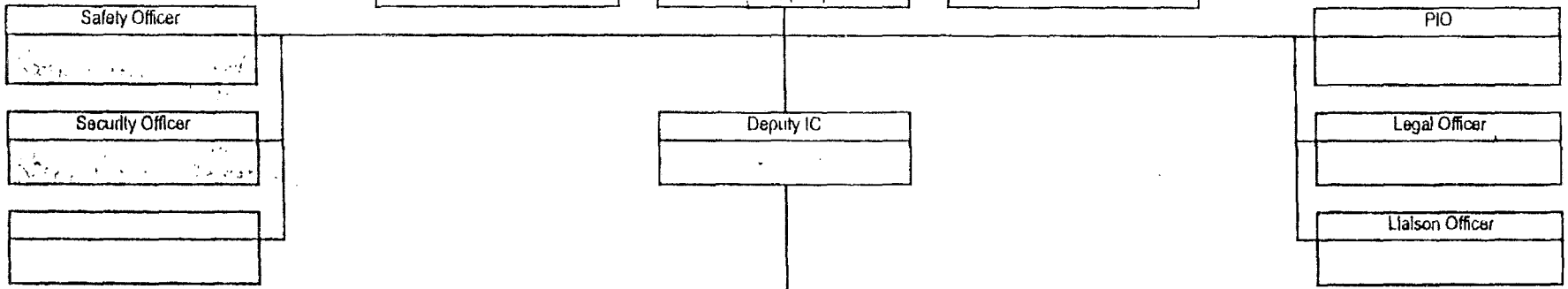
Operations Section Chief – Mel Durley  
Assistant Operations Chief – Wayne Pierson  
On Water Group Supervisor – Eric Each  
Shoreline Group Supervisor – Maurice Jones  
Disposal Group Supervisor – Jim Hosler  
Decontamination Group Supervisor – Paul Northey  
Staging Area Manager – Frank Carden  
OSRO Onshore - Pete Esparza  
OSRO on Water – Bea Esparza  
Salvage/Repair Control Group Supervisor – Chuck Wachter  
Salvage/Repair Engineering – Guy Castro

Logistics Section Chief – Harsha Tank  
Assistant Logistics Chief – Mike Edwards  
Support Branch Director – Ruben Rendon  
Ground Support Leader – Tracy Moore  
Communications Unit Leader – Robert Godoy  
Service Branch Director – Lyle Boarts  
Medical Unit Leader – Mike DeLitta

Finance/Administration Section Chief – Wendy Whitfield  
Cost Unit Leader – Lance Dobieski  
Procurement Unit Leader – Frank Ettner

Incident Name: *...* Date Prepared: *11/16* Time Prepared: *1:30* Operational Period Date: From: *1-6* To: *11-7* Operational Period Time: From: *1900* To: *700*

State On-Scene Commander: *...* Incident Commander: *...* Federal On-Scene Commander: *...*



Prepared By: *...* Company Name: *...* ICS Position: *...* Approved By: *...* Company Name: *...* ICS Position: *...*



# Incident Action Plan

## ICS 202 Incident Objectives/Response Priorities

Incident Name: Dominguez Channel Spill	Date Prepared: 11/6/03	Time Prepared: 13:00
Operational Period Date: From: 11/6/03 To: 11/07/03	Operational Period Time: From: 19:00 To: 07:00	

### General Control Objectives For The Incident (Include Alternatives)

Continue recovery and clean up operations with in the East Basin in an effort to return this area to commerce as soon as possible.
Deploy boom around the marina to accomplish two objectives, protect the private boats from further contamination and when clean up out in the East Basin is complete it will not be recontaminated from the marina.
Engineering to develop a permanent repair plan for the pipeline to be included in the IAP.
Continue recovery operations in the up stream zones.
Recourses to identify available contractors to begin clean up operations inside the marina.
Planning section staff will be reduced to two personnel over the night, Operations Chief or alternate, resource chief or alternate.
Resource's to be scaled back to the following per group for the night.

### Weather Forecast for Operational Period

See attached

### General Safety Message

See medical (ICS 206)
See Site Safety Plan

### Attachments (Required for IAP)

<input type="checkbox"/> Incident Objectives (ICS 202)	<input type="checkbox"/> ICS Position/Phone Numbers (ICS 205-1)	<input type="checkbox"/> Air Operations (ICS 200)
<input type="checkbox"/> Organizational Assignment List (ICS 203)	<input type="checkbox"/> Medical Plan (ICS 206)	<input type="checkbox"/> Health & Safety Message (ICS 223)
<input type="checkbox"/> Division/Group Assignment (ICS 204)	<input type="checkbox"/> Location Map _____ Location [ICS 209-(3-7)]	<input type="checkbox"/> Environmental Summary (ICS 224)
<input type="checkbox"/> Communications Plan (ICS 205)	<input type="checkbox"/> Situation Status Summary (ICS 209 Inland/209-2 Marine)	<input type="checkbox"/> Other _____

Prepared By: Gerry Tywoniuk	Company Name: Pacific Energy Group.	ICS Position: <b>Planning Section Chief</b>
Approved By Incident Commander (IC):		Company Name:
Approved By Federal On-Scene Coordinator (FOSC):	Date:	Approved By State On-Scene Coordinator (SOSC):
		Date:

# MEDICAL PLAN

ICS 206

INCIDENT NAME:  PT 508 - Dominguez Channel	Date Prepared: 6-Nov-03	Operational Period  From: To:	Date 6-Nov-03	Time 8:30
	Time Prepared: 8:30		7-Nov-03	8:30

### INCIDENT MEDICAL AID STATIONS

MEDICAL AID STATIONS	PHONE/RADIO	LOCATION	EMT	MEDIC
Memorial Maritime	(562) 432-2821	150 S. Pico, Long Beach	<input type="checkbox"/>	<input checked="" type="checkbox"/>
Aid Station - west of spill site	Radio	Field Command Center	<input checked="" type="checkbox"/>	<input checked="" type="checkbox"/>
			<input type="checkbox"/>	<input type="checkbox"/>
			<input type="checkbox"/>	<input checked="" type="checkbox"/>
			<input type="checkbox"/>	<input type="checkbox"/>
			<input type="checkbox"/>	<input type="checkbox"/>
			<input type="checkbox"/>	<input type="checkbox"/>

### GROUND AMBULANCE SERVICES

NAME	PHONE/RADIO	LOCATION	EMT	MEDIC
Bowers Ambulance	(562) 591-3371	Long Beach	<input checked="" type="checkbox"/>	<input checked="" type="checkbox"/>
Fire Ambulance	911	Long Beach	<input type="checkbox"/>	<input checked="" type="checkbox"/>
			<input type="checkbox"/>	<input type="checkbox"/>
			<input type="checkbox"/>	<input type="checkbox"/>
			<input type="checkbox"/>	<input type="checkbox"/>

### AIR AMBULANCE SERVICES

NAME	PHONE/RADIO	LOCATION	EMT	MEDIC
Life Flight	(562) 426-0378	Long Beach	<input type="checkbox"/>	<input checked="" type="checkbox"/>
			<input type="checkbox"/>	<input type="checkbox"/>
			<input type="checkbox"/>	<input type="checkbox"/>
			<input type="checkbox"/>	<input type="checkbox"/>

### HOSPITALS

NAME	CITY	PHONE	GND TIME	AIR TIME	HELIPAD	BURNCTR
St. Mary's Hospital	Long Beach	(562) 491-9000	10	3	<input checked="" type="checkbox"/>	<input type="checkbox"/>
Long Beach Memorial	Long Beach	(562) 933-2000	8	2	<input checked="" type="checkbox"/>	<input checked="" type="checkbox"/>
Torrance Memorial Medical Ctr	Torrance	(310) 325-9110	6		<input checked="" type="checkbox"/>	<input checked="" type="checkbox"/>
					<input type="checkbox"/>	<input type="checkbox"/>
					<input type="checkbox"/>	<input type="checkbox"/>

### MEDICAL EMERGENCY PROCEDURES

- Real medical emergencies should be identified by "Emergency, Emergency, Emergency." Identify by task force and location. State nature of emergency.
- All medical injuries should be immediately reported to either the Medical Unit Leader or Safety Officer
Long Beach Public Health Dept (Dr. George Nakai - 562-570-4000)

Prepared By: (MEDICAL UNIT LEADER) [Redacted]	Reviewed By: (SAFETY OFFICER) [Redacted]
--	---

Michael J. DeLitta, Ph.D., PA-C

John Miksad

# Incident Action Plan

ICS 223

## Health and Safety Message

Incident Name PT 508	Date Prepared 11/6/03	Time Prepared 1000hr
Operational Period Date 11-6-03 – 11/7/03	Operational Period Time 0800hr – 0800hr (11/7/03)	

Major Hazards and Risks
1) Lower potential for benzene and total hydrocarbon vapors
2) Hypothermia if workers enter the water
3) Slips, Trips & Falls
4) Boat Safety
5) Helicopter fly overs
6) Possible High Noise Levels (~90 dB).

Narrative
<ul style="list-style-type: none"> <li>Inhalation is the primary route. Hydrocarbon vapors can irritate the eyes, nose, throat and lungs.</li> </ul>
<p>Minor discomfort due to nausea, headache, dizziness may occur. Eye irritation may also occur.</p>
<ul style="list-style-type: none"> <li>Persons with any of the above complaints should move into an area of fresh air. For respiratory Distress, seek medical attention.</li> </ul>
<ul style="list-style-type: none"> <li>Skin contact may cause irritation. Avoid contact with oil through use of personal protective equipment.</li> </ul>
<ul style="list-style-type: none"> <li>For eye contact, flush the eyes with clean low-pressure water for at least 15 minutes. If pain or redness persists after flushing, obtain medical attention.</li> </ul>
<ul style="list-style-type: none"> <li>Periodic monitoring at all affected sites (benzene, hydrocarbons, hydrogen sulfide)</li> </ul>
<ul style="list-style-type: none"> <li>Before initiating any new activities, ensure the safety department has approved the activity</li> </ul>
<ul style="list-style-type: none"> <li>Utilize PFDs for all on water work. If personnel enter the water, immediately remove to dry warm area. Wrap in blanket</li> </ul>
<ul style="list-style-type: none"> <li>Daily tool box / safety meetings are required at the beginning of each shift. These informal meetings will discuss the days activities and stress all safety requirements</li> </ul>
<ul style="list-style-type: none"> <li>High noise levels may be generated by some skimming operations and helo landings. Workers in these areas are required to utilize ear plugs (min NRR of 29) and ear muffs (min NRR of 25). Voluntary usage of ear plugs workers is recommended at &gt;100 feet.</li> </ul>
<ul style="list-style-type: none"> <li>Report all injuries / illnesses to Health and Safety at Civic Center.</li> </ul>
<ul style="list-style-type: none"> <li>Helicopter fly overs: when flying over personnel a 500 feet minimum distance must be maintained. All Applicable FAA rules/regulations shall be followed.</li> </ul>

Prepared by [Redacted]	Commander [Redacted]	ICS Position Safety Officer



# PACIFIC PIPELINE SYSTEM

## RESPONSE DOCUMENTATION WORKSHEET

DRILL: FT 502

DATE: 06/10/03

PAGE 1 OF

SUBJECT: ADEND. III TO SHSP

BY: MIKSAI, J.K.

NIGHT WORK -

1) ENSURE ADEQUATE LIGHTING IN WORK & SECURE AREAS - ISSUE FLASHLIGHTS TO ROVING PERSONNEL

2) REFLECTIVE & FLUORATION VESTS FOR ON ROAD AND ON WATER WORK AS APPLICABLE

3) THE "BUDDY" SYSTEM WILL BE IN EFFECT - ALL PERSONNEL WILL BE TEAMED AND WORK IN GROUPS - NO LONE PERSONNEL IN WORK ZONE(S)

4) TWO EACH, TWO MAN AIR MONITORING TEAMS WILL CONTINUE TO PERIODICALLY CHECK AREAS PRIMARILY - RESPOND TO COMPLAINTS AND PROVIDE SMOKE COVERAGE DURING CLEAN UP & REPAIR OPS

PACIFIC ENERGY GROUP, LLC.

OIL SPILL CLEANUP OPERATIONS  
SITE SAFETY AND HEALTH PLAN

INITIAL

Date: 06 NOV 03

A. INCIDENT NAME: PT 508

B. GENERAL LOCATION:  
THOMAS CROSS Pk 704 / 701.  
Mile Post: \_\_\_\_\_ Latitude: \_\_\_\_\_ Longitude: \_\_\_\_\_  
Landmark (s): INTERSECTION OF 225<sup>th</sup> & WILMINGTON-CARSON  
BP REFINERY TO THE SOUTH, DOMINGUEZ CHANNEL

C. SITE CHARACTERIZATION AND ANALYSIS:  
(See Attachment 1)

D. ORGANIZATIONAL STRUCTURE  
PEG On-Scene Commander: Bob ARELLANO  
Federal On-Scene Coordinator: fdg  
State On-Scene Coordinator: \_\_\_\_\_  
LIAISON OFFICER - MARK REESE  
Local Emergency Services Coordinator: \_\_\_\_\_  
Site Safety & Health Officer: JOHN M. KSAT  
Contractor Project Manager(s): \_\_\_\_\_  
ANCCN -  
ACTI

E. WORKPLAN DISCONTAINMENT SPILL AREA / LEAK -  
CLOSE ROADWAY - INTERSECTION - 723<sup>RD</sup> & WILLIAMS RD.  
CLOSE FREIGHT RAMP'S TO TACS

2) Deploy pumps @ LEAK SITE - USING B&B PUMPS

3) Deploy Booms - TRIPLE GULCH CHANNEL TO  
CONTAINMENT CHANNEL

4) Pick up the trucks @ Channel (if necessary)

F. SAFETY AND HEALTH HAZARDS

Check:

Skin contact:  Water hazards:  Heat stress:

Hypothermia:  Hazards to the eye:  Heat exhaustion:

Cuts and abrasions:  Heavy objects:  Poisonous animals:

Vehicular traffic:  Infectious conditions:  High crime areas:

Other (Describe): SKIN/RESPIRATORY CONTACT TO CRUDE OIL  
H.C., WATER HAZARDS - TEMPERATURE EXPOSURE - HYPOTHERMIA  
Slips, trips, falls  
HEAT (P's) EQUIP. NOISE

Attached MSDS (Check):

Crude Oil MSDS:  SIV  HUY

Other MSDS (Describe \_\_\_\_\_)

G. TRAINING PROGRAM SID TRC TRAINING -  
HAZMAT - RESPONDER  
RESPIRATORY PROTECTION  
HANDBOOK - CODE DE CONDUCT

I. PRE-ENTRY (DAILY) BRIEFING - ASSOCIATIONAL TECHNIQUES  
CONCERN FOR LIMITED HAZARDS  
TRAFFIC HAZARDS

EFFECTIVENESS OF SITE SAFETY AND HEALTH PLAN \_\_\_\_\_

J. SITE CONTROL - OFFSITE OPERATIONS CLOSURE OF WILMINGTON  
& 223<sup>RD</sup>, 405 RAMP  
HOT - WILMINGTON & 223<sup>RD</sup>

K. WORK PRACTICES Req. STD Safe Work Practices

L. PERSONAL PROTECTIVE EQUIPMENT

Required (Check):

Hardhats: X Safety shoes: X Goggles: \_\_\_\_\_

Gloves: ^ Overalls (Tyvek): X Rain gear: X

Respirators: \_\_\_\_\_ Life jackets: X

Other (Describe): FLAGGING / REFLECTIVE VESTS - RPE  
REQ'D DURING INITIAL SURVEY OF AREA, IF  
ATMOS READINGS ARE  $\geq 10$  / ACCEPTABLE READINGS -  
NO RPE REQ'D

N. MEDICAL SURVEILLANCE - CGHG

O. MONITORING PROGRAM

Workers: NO INITIAL - Awaiting AREA SURVEY -  
CGHG IS EXPECTED



Environmental Conditions: SCATTERED SHINEYS TEMP - 50°F  
50% Precip

P. DECONTAMINATION STANDARD Decon

Q. EMERGENCY RESPONSE

	Locations	Telephone Numbers
Police/Fire Departments:	<u>CHARSON PD</u> <sup>SITURINS</sup>	<u>911</u>
Hospitals (attach map)	<u>ST Marys</u> <u>LBMC</u>	<u>SEE MET ROAD</u> <u>SEE MET ROAD</u>
Ambulances:	<u>LA CITY</u>	<u>911</u>
Air Ambulances:		

Locations

Telephone Numbers

Paramedics:

LA CITY  
\_\_\_\_\_  
\_\_\_\_\_  
\_\_\_\_\_  
\_\_\_\_\_  
\_\_\_\_\_

\_\_\_\_\_  
\_\_\_\_\_  
\_\_\_\_\_  
\_\_\_\_\_  
\_\_\_\_\_

Other:

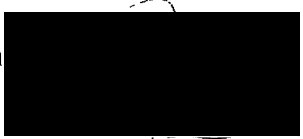
\_\_\_\_\_  
\_\_\_\_\_  
\_\_\_\_\_  
\_\_\_\_\_  
\_\_\_\_\_

\_\_\_\_\_  
\_\_\_\_\_  
\_\_\_\_\_  
\_\_\_\_\_  
\_\_\_\_\_

R. CONFINED SPACE ENTRY N.A.

\_\_\_\_\_  
\_\_\_\_\_  
\_\_\_\_\_  
\_\_\_\_\_  
\_\_\_\_\_  
\_\_\_\_\_  
\_\_\_\_\_  
\_\_\_\_\_

Prepa



(Signature)

11. NOV 03

(Date)



# PACIFIC PIPELINE SYSTEM

## RESPONSE DOCUMENTATION WORKSHEET

DRILL: PT 5023

DATE: 06 NOV 83

PAGE 1 OF 1

SUBJECT: SECURITY PLAN

BY: J. WILKINSON

FOR: X / SCOPED -

TO PREVENT UNAUTHORIZED ACCESS TO SPILL AREAS(S)

1) IDENTIFICATION: ALL RESPONSE PERSONNEL, INCLUDING SUPPORT TEAMS (I.E. SECURITY) WILL BE ISSUED PHOTO ID CARDS (TO BE EXHIBITED ON SITE)

PERSONNEL WILL BE VERIFIED BY COMPANY ROSTER.

2) ACCESS CONTROL: SECURITY PERSONNEL (2 minimum) WILL BE POSTED AT ALL ACCESSIBLE OVERCROSSINGS TO THE CHANNEL - 10 LOCATIONS

PRIMARY DUTY OF THESE TEAMS IS TO PREVENT CIVILIAN AND ANY OTHER UNAUTHORIZED ACCESS TO SPILL AREAS OF THE CHANNEL.

SECURITY PERSONNEL WILL BE STAGED IN (ADJACENT) STRIKING AREAS TO CONTROL ACCESS FOR DELIVERIES AND OTHER AUTHORIZED PERSONNEL.

3) SECURITY PERSONNEL WILL BE EQUIPPED WITH RADIOS, HORN HAZARDS AND REFLECTIVE VESTS



# PACIFIC PIPELINE SYSTEM

## RESPONSE DOCUMENTATION WORKSHEET

DRILL: PISC

DATE: 8/20/03

PAGE 2 OF 2

SUBJECT: SECURITY PLAN

BY: MIKSAJ, J.K.

4) SECURITY PERSONNEL WILL RESPOND PASSIVELY TO INTERFERERS, REALIZING THAT THE AREA IS UNARMED

IF INTERFERERS REFUSE TO DEPART, SP ARE NOT TO RESPOND HOSTILELY - STAND DOWN AND CONTACT SECURITY DEPT. AND S&SC.

ICS 209 Inland  
Situation Status Summary

Incident Action Plan

Incident Name: <u>FT568</u>	Date Prepared: <u>11/6/03</u>	Time Prepared: <u>1:21:30</u>
Operational Period Date: From: _____ To: _____	Operational Period Time: From: _____ To: _____	
Incident Commander: <u>Babellacane</u>	Cost Center: _____	
Location: _____	Spiller: _____	<u>Alouette</u>
Type of Incident: <u>(P/L, Manne, Terminal, Tundra, etc.)</u>	Vessel Name: _____	
Incident Start Date/Time: <u>5:40H 4/6/03</u>	Cause: <u>2 Fuel Pumps</u>	

Oil Status (Estimated)			
Disposition	Previous Total +	Last 12 Hr. =	Total
Total Oil Lost	<u>5</u>	<u>4,200</u>	<u>4,200</u>
Recovered Liquids			
Evaporation			
Natural Dispersion			
Chemical Dispersion			
Burned			
Uncontained			
On Shore			
Offshore			

Offshore Equipment Resources			
Type	Previous Total +	Last 12 Hr. =	Total
Boom Deployed (Field)		<u>2,000</u>	<u>3,000</u>
Pressure Washers		<u>2</u>	<u>2</u>
Vacuum Trucks		<u>5</u>	<u>5</u>
Bioremediation (Sq. Feet)			
Booms (Total Feet)		<u>23,000</u>	<u>33,000</u>
Snare Boom (Total Feet)			
Skimmers (Total)		<u>22</u>	<u>22</u>
Vessels/Boats (Total)		<u>25</u>	<u>25</u>

Waste Management (List Quantities in 8BLS/Yards)			
Type	Recovered	Stored	Recovered
Oil	<u>100 bbls</u>	<u>21,100</u>	
Oily Liquids			
Liquids			
Oily Solids			
Solids			
Hazardous			

Manpower Resources		
Affiliation	Inc. Command Post	Field
Response Spec.		
Contract		
Others		
Total		

Shoreline Impacts		
Degree of Oiling	Total Miles Affected	Total Miles Treated
Response Spec.	<u>4</u>	<u>0</u>
Contract		
Others		
Total	<u>4</u>	

Meteorology Forecast Next Operational Period	
Wind Direction & Speed	<u>S 5 kts</u>
Temperature	<u>68 H 58 L</u>
Wind Chill	<u>67 H 57 L</u>
High Tide/Time	<u>7:57 P</u>
Low Tide/Time	<u>1:57 P</u>
Long/Lat. Of Weather Station	<u>-</u>

Companies or Regional Response Centers Committing Additional Resources									
Company/Response Center									Totals
Helicopters	<u>1</u>								<u>1</u>
Boat									
Skimmers	<u>22</u>								<u>22</u>

Prepared By: _____	Company Name: <u>Alouette</u>	ICS Position: _____
Approved By: _____	Company Name: _____	ICS Position: _____

ICS 209-2 Marine  
Situation Status Summary

Ident Action Plan

Event Name: PT 508 Date Prepared: 11/6/03 Time Prepared: 12:30

Operational Period Date: From: To: Operational Period Time: From: To:

Oil Status Condition			
% Emulsion:		Viscosity:	
Estimated Amounts, bbls			
Location	Site A	Site B	Total
Total Oil Loss			4 500
Recover'd Liquids			
Dispersed			
Burned			
Slick Size			
Oil Onshore			
Uncontained			
Natural Dispersion			
Chemical Dispersion			
Evaporated Dispersion			

Pipeline Operations Status			
	Yes/No	Current	24 Hr. Fract
Shipping Lanes Open	Y		
Port Valdez Open	Y		
Tank Space	Y		
Berths in Service	Y		
Berths Occupied	Y		
Taps Flow	Y		
Shutdown Projected		Time	Date

Weather	Current	12 Hr. Fract	24 Hr. Fract
Wind Speed	5 mph		
Wind Direction	S		
Temperature	50°		
Visibility	10 miles		
Clouding			
Time			
Wave Height			
Sunrise/Sunset	6:37/4:58		
Sea Status	Choppy		

People			
Affiliation	VEOC	Field	Enroute
Shipper			
Alyeska			
Agencies			
Public/Government	6		
Observer/Other			
Fish Vessel Crew			
Contractor		160	
<del>KT</del>	<del>40</del>	9	
CG	0		
ADEC			
Shoreline Cleanup			
Total	46	169	215

Resources/Type	Assigned	Available	Arriving/Os
ERVs	1		
Tugs			
Fishing Vessels			
Tenders			
Helicopters	1		
Aircraft			
Boom	33000		
Barges			
Storage Cap Mbl			
Skimmers	22		
Skim Cap Mbb/hr.			
Landing Craft	30		
Lightening Craft			
Adds Pack			

Wildlife			
Source:	Type	Dead	Srv'd
	Birds		
	Sea Lions		
	Sea Otters		
	Harbor Seals		
			1 Block

Beach Impact	Class	Amount
Light		0
Medium		0
Heavy		0
Total		0

Disposal	Amount
Oily Liquids	
Oily Solids	

General Remarks

*Reported a spillage*

Tanker Status

Location: Activity:

Prepared By: [Redacted] Company Name: Alyeska ICS Position: SO

Approved By: [Redacted] Company Name: Alyeska ICS Position: SO

## Operations Status

- 0700-1100 Isolated and Contained 4 zones and 3 active staging areas
- 1100 Clamp made at Wilmington – leak stopped
- 1100-1500 Displacing oil for repair
- 1130 Primary and Secondary booms were in lace for zone 4
- 0700 – 1100 Additional 500 bbls leaked out
- 1040 Tank 9 made available at Dominguez
- 1130 Recovery of displaced oil will be on going
- 1130-2400 Zone 4 cleanup complete
- 1130 Second Skimmer boat requests for zone 4 cleanup
- 1100 Skimmer boat arrived
- 1100 Coast Guard Security in place
- 1120 Additional security requested for Staging area and all zones
- 1100-0700 All zone recover will continue
- 1200 Recovered 200 bbls of the 4500 estimated discharged.

**CURRENT INFORMATION AS OF 2:00 PM - NOVEMBER 6, 2003**

INCIDENT OCCURRED: Approximately 5:30 AM Thursday, November 06, 2003, at the intersection of Wilmington Avenue and 223<sup>rd</sup> Street in the City of Carson, CA

TYPE OF INCIDENT: Pipeline break / rupture

LINE: Line 508 24" crude oil pipeline

CAUSE: Unknown, under investigation

AREA AFFECTED: On ramp / off ramp closed from 405 Fwy @ Wilmington, Intersection closed at Wilmington/223<sup>rd</sup>, oil in Dominguez Channel has reached the marina.

AGENCIES INVOLVED: U.S. Coast Guard, State of CA Fish & Game, Port of Long Beach, CA State Fire Marshall, and other local agencies.

COMMODITY Heavy San Joaquin Valley Crude Oil

AMOUNT: Approximately 4,500 barrels / 190,000 gallons

RECOVERED: Approx. 100 barrels to date, expect the majority of the crude oil

HEALTH & SAFETY: No injuries, no public safety issues. Air monitoring under taken as a precaution.

CLEAN UP RESPONSE Pacific has accepted responsibility for the clean up activities. Deployed spill containment booms at several locations on the Dominguez Channel. Using oil skimmers and vacuum trucks to recover the oil. Total clean-up expected to take 2-3 weeks to complete. 24 hour operation, over 150 people involved.

CLAIM NUMBERS Toll free numbers for any claims or health issues related to the oil release.

Health Issues: Axiom Medical (877) 502-9466  
Claims: Marsh USA (800) 252-4670 Claim # 401487-217

RELOCATION Working with local community residents to accommodate any individuals or families displaced as a result of this incident. Working with the local marina and affected boat owners.

WILDLIFE Working with the Fort MacArthur Wildlife Rescue and the International Bird Rescue to assist any impacted wildlife.

ADDITIONAL INFO: Pacific Terminals LLC (800) 111-2222



***Draft Joint Press Release***  
**11:30 AM Thursday, November 6, 2003**

**Pacific Terminals LLC  
United States Coast Guard  
California Department of Fish and Game  
California State Fire Marshall Office of Pipeline Safety**

CARSON--Clean up work continues on a crude oil release from a pipeline owned by Pacific Terminals LLC, which was first reported at 5:30 AM this morning near the intersection of Wilmington Avenue and 223<sup>rd</sup> Street in the city of Carson, California.

Pacific Terminals is working closely with the United States Coast Guard, the California Department of Fish and Game, the California State Fire Marshal and other local agencies on clean up activities.

Pacific Terminals has accepted responsibility for the clean up activities. At this time there are no public safety issues or injuries associated with the oil release. As a precaution, air monitoring of the impacted area is being done.

Pacific Terminals is making every effort to minimize the impact to both the environment and the local area business and residents.

Crews will be working around the clock to remove the oil. Oil spill containment booms have been deployed at several locations on the Dominguez Channel to contain the oil. International Bird Rescue and Fort MacArthur Wildlife Rescue are assisting with any wildlife that may have been impacted by the oil release.

At this time the spill volume is estimated at 190,000 gallons. The line has been clamped and is expected to be back in service within twenty-four hours. We do not anticipate any adverse impact to the supply of crude oil to the local refineries. The exact cause of the release is undetermined at this time, but a full investigation will be undertaken with the California State Fire Marshal and the California Department of Fish and Game.

We will be having a formal press briefing today at 2:00 PM from the Joint Information Center, which has been set up at \_\_\_.

Pacific Terminals LLC is headquartered in Long Beach, California.

If you have any medical related issues relating to the oil release please contact Axiom Medical at (877) 502-9466.

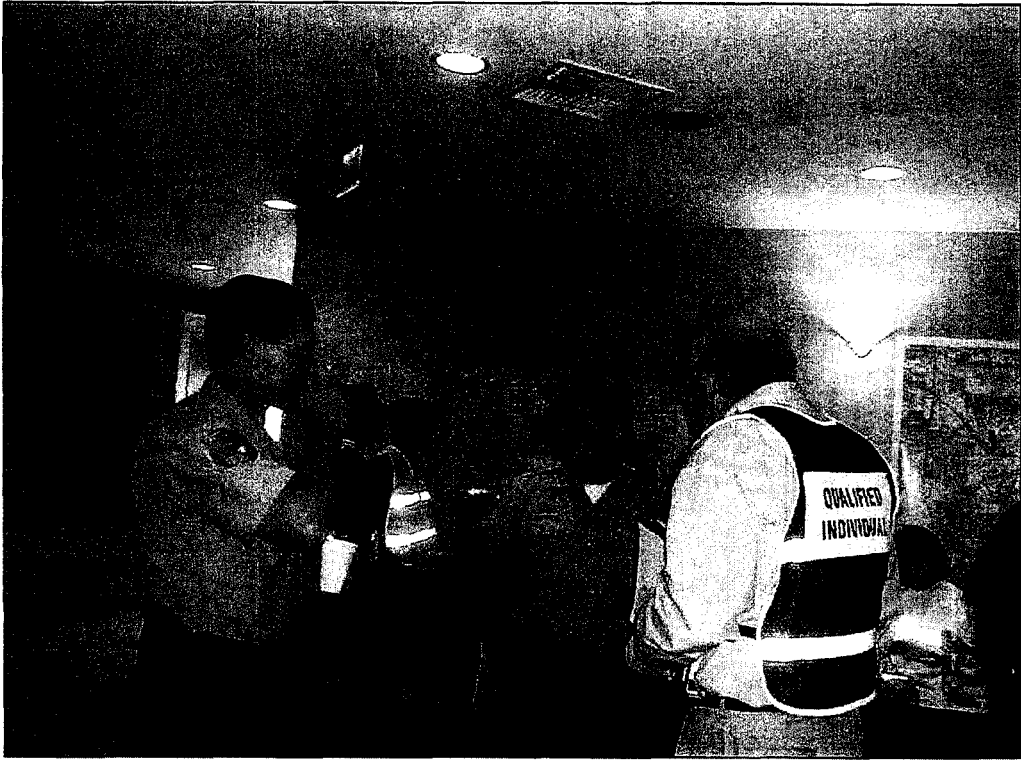
If you have any claims relating to the oil release please contact Marsh USA at (303) 300-4037, claim number 401847-217

For additional information please call (800) 111-2222.

PACIFIC ENERGY GROUP - SPILL MGMT. TEAM TABLETOP EXERCISE  
LONG BEACH, CALIFORNIA - NOVEMBER 6, 2003



PACIFIC ENERGY GROUP - SPILL MGMT. TEAM TABLETOP EXERCISE  
LONG BEACH, CALIFORNIA - NOVEMBER 6, 2003 - PAGE 2



# **DOMINGUEZ CHANNEL SPILL INCIDENT**

November 6, 2003 – Long Beach, California

## **SPILL MANAGEMENT TEAM TABLETOP EXERCISE**

---

### **SCENARIO:**

#### **INCIDENT:**

- 05:30 hrs. PEG Operations Control Center receives a telephone call from the Call Wheel that Oil is covering Wilmington Avenue and 223<sup>rd</sup> Street.
- Pacific Terminals has been making a delivery of SJV Crude from Dominguez Hills Station to Exxon/Mobil Refinery through the El Real Station since 22:00 hours on November 5<sup>th</sup>. SCADA System does not reveal any deviation from standard operating conditions. The OCC has called Exxon/Mobil and requested a gauge on the tank receiving from Pacific Terminals. OCC dispatches a Line Rider to Wilmington Avenue and 223<sup>rd</sup> Street to investigate.
- 06:27 hrs. OCC receives a call from the Call Wheel that a Large Volume of Oil has been reported in the Dominguez Channel in the vicinity of the Valero Refinery. Pacific Terminals is still delivering to Exxon/Mobil.
- 06:45 hrs. The Pacific Terminals' Line Rider contacts the OCC from the Wilmington Avenue and the 223<sup>rd</sup> Street location. Police and Fire Departments have closed the intersection including the On Ramps and Off Ramps to the 405 Freeway. The Line Rider indicates that the oil may be coming from Line 508 and that there is a lot of oil on the road and in the Dominguez Channel. He recommends that Line 508 be shut down and isolated.
- 06:55 hrs. OCC receives a telephone call from Exxon/Mobil – “The Tank Gauge shows 52,888 barrels received since 18:00 hours on November 5<sup>th</sup>.” Pacific Terminals has been pumping to Exxon/Mobil at 6,500 bbls. per hour for 8 hours, 45 minutes.
- 06:58 hrs. OCC makes internal notifications. Misters Bob Arellano and Mark Reese initiate actions for a Level III event.

PACIFIC ENERGY GROUP, LLC

**DOMINGUEZ CHANNEL SPILL INCIDENT**

November 6, 2003 – Long Beach, California

**SPILL MANAGEMENT TEAM TABLETOP EXERCISE**

---

**Actual Time of Spill Incident:**

05:30 hours, November 6, 2003

**Time PEG Internal Notifications Commence:**

06:58 hours, November 6, 2003

**Time Command Post/Center Activated:**

08:00 hours, November 6, 2003

**Headquarter Address Of Spiller:**

5900 Cherry Avenue  
Long Beach, CA 90805

Tel : 562/728-2800

Fax: 562/728-2823

**Location of Incident:**

Intersection of Wilmington Ave. & 223<sup>rd</sup>  
Street, near the 405 Freeway.

Longitude: N33° 48.96"

Latitude: W118° 14.63"

Nearest City – Long Beach, CA

**Weather Conditions:**

Temperature - "See Weather Forecast"  
Wind – "See Weather Forecast"

**Channel Conditions:**

"See Tides & Currents for Long Beach/Los Angeles Harbor"

**Estimated Spill Volume:**

UNKNOWN AMOUNT of SJV Crude Oil  
into Dominguez Channel at this time.  
"See MSDS No. UN1267"

PACIFIC ENERGY GROUP, LLC  
DOMINGUEZ CHANNEL SPILL INCIDENT

November 6, 2003 – Long Beach, California

*SPILL MANAGEMENT TEAM TABLETOP EXERCISE (cont.)*

---

**GENERAL BACKGROUND INFORMATION:**

1. Spilled Product is Petroleum Crude Oil - Sweet (See PEG - MSDS).
2. Initial Oil Spill Response will be conducted by PACIFIC ENERGY GROUP'S Spill Response and Spill Management Teams and will utilize an Organizational System Consistent with the Incident Command System and the Unified Command Component of the ICS.
3. PACIFIC ENERGY GROUP'S Field Team Leader and staff will function as the Initial Incident Commander and Staff.
4. PACIFIC ENERGY GROUP'S Spill Management Team Personnel will assume Command of this Incident upon being Notified.
5. The Qualified Individual will assume overall Responsible Party Duties and is a member of the PACIFIC ENERGY GROUP'S Spill Management Team.
6. PACIFIC ENERGY GROUP'S Initial Spill Response Team is Notified of the Dominguez Channel Spill Incident at 08:30 hrs.
7. PACIFIC ENERGY GROUP'S Spill Management Team is Notified of the Dominguez Channel Spill Incident at 08:40 hrs.
8. PACIFIC ENERGY GROUP'S Spill Management Team will consist of 30-40 Responder Personnel.
9. Areas of the San Diego Freeway and Wilmington Avenue have been Impacted by this Oil Spill Incident.
8. Wildlife is located within the Impacted Initial Spill Site.
9. PACIFIC ENERGY GROUP, LLC Does Have Under Contract an Oil Spill Removal Organization. (OSRO).

PACIFIC ENERGY GROUP, LLC

DOMINGUEZ CHANNEL SPILL INCIDENT

November 6, 2003 – Long Beach, California

*SPILL MANAGEMENT TEAM TABLETOP EXERCISE (cont.)*

---

GENERAL BACKGROUND INFORMATION: (cont.)

13. Commercial Areas are located along Dominguez Channel & Long Beach Harbor.
14. Crude Oil has and is continuing to Migrate into Dominguez Channel.
15. The following Facilities and Areas along Dominguez Channel have a potential of being Impacted as a result of this Crude Oil Spill Incident.
  - Commercial, Public & Private Areas Downstream of the Crude Oil Spill Site Location.
  - The Cities of Wilmington & Long Beach, CA.
  - Long Beach Harbor.
  - Federal Highway & City Roads.
  - Commercial Marine Shipping & Receiving Facilities.
18. The following Companies and Organizations may assist the *PACIFIC ENERGY GROUP'S* Spill Management Team Personnel during this Crude Oil Spill Incident into Dominguez Channel.
  - City of Wilmington, CA Fire & Police Departments,
  - City of Long Beach, CA Fire & Police Departments,
  - California Highway Patrol,
  - Los Angeles LEPC & Sheriffs Department,
  - California Fish & Game – Office of Spill Prevention & Response,
  - US. Fish & Wildlife Service,
  - U.S. EPA – Region 9,
  - U.S. COAST GUARD – MSO LA/LB,
  - U.S. Federal Emergency Management Agency,
  - U.S. DOT RSPA,
  - California Energy Commission,
  - California Governor's Office of Emergency Services,
  - California Coastal Commission,
  - California State Lands Commission,
  - DOWCAR Environmental Management, Inc.,
  - See Pacific Energy Group's Facility Response Plan for Additional Organizations and Companies.

PACIFIC ENERGY GROUP, LLC  
DOMINGUEZ CHANNEL OIL SPILL INCIDENT

November 6, 2003 – Long Beach, California

*SPILL MANAGEMENT TEAM TABLETOP EXERCISE (cont.)*

---

**SPILL RESPONSE EQUIPMENT - ON SITE:**

- See - *PACIFIC ENERGY GROUP, LLC* Facility Response Plan.
- See - *Rocky Mountain Pipeline System's* Emergency Action Response 2002 Book II.
- See - OSRO Equipment List.
- See - Oil Spill Cooperative Equipment List.



PACIFIC ENERGY GROUP, LLC

DOMINGUEZ CHANNEL SPILL INCIDENT

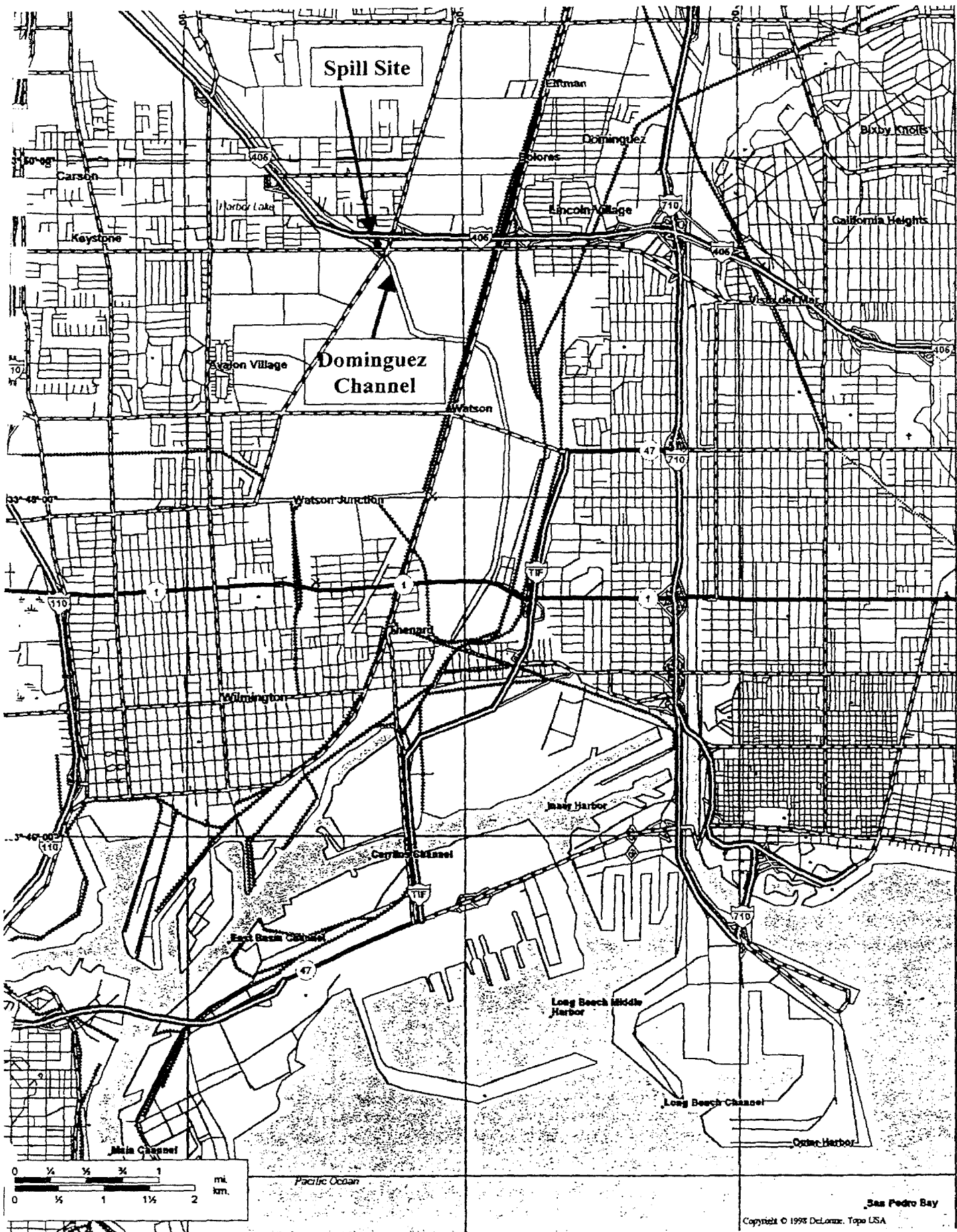
November 6, 2003 – Long Beach, California

*SPILL MANAGEMENT TEAM TABLETOP EXERCISE (cont.)*

---

**GUIDANCE QUESTIONS:**

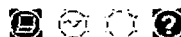
1. What will *PACIFIC ENERGY GROUP'S* Incident Command System and Unified Command Organization look like and How will it function? Please Place Spill Management Team Members and All Mutual Aid Companies, Response Contractors and Governmental Agencies into appropriate Response Positions and Determine What Duties they will Perform and When.
2. Who will be the Initial Incident Commander & When will he/she be Replaced, When and Why?
3. Will the IC also be designated as the Qualified Individual?
4. What Local, State and Federal Environmental Protection Agencies will be Notified, When and By Whom? Please Notify to Verify.
5. What Information will be given to the above agencies?
6. What additional Local/Outside Sources will be Requested, When and By Whom?
7. What are Protection Priorities? List Them According to their Priority.
8. Indicate in what Order your Response Actions will take Place & Under Whose Control.
9. Determine the proper Levels of PPE Required for all Response Actions and Responder Personnel and where Site Safety Control Zones will be Placed.
10. What additional Oil Pollution Control Equipment and Supplies will be needed and where will it be obtained and in what time frame?
11. How many additional OSHA Certified and Trained Personnel will be needed for assistance, where will they come from and how quick?



# LONG BEACH, CALIFORNIA

## WEEKLY WEATHER

### 10-Day Forecast



**Hourly** **Averages & Records** **Yesterday's Weather**

Printable Forecast		Daytime High / Overnight Low (°F)	Precip. %
<u>Tonight</u> Nov 01	Partly Cloudy	50°	0 %
<u>Sun</u> Nov 02	Partly Cloudy	65°/51°	0 %
<u>Mon</u> Nov 03	Partly Cloudy	59°/51°	10 %
<u>Tue</u> Nov 04	Partly Cloudy	62°/50°	20 %
<u>Wed</u> Nov 05	Partly Cloudy	62°/50°	10 %
<u>Thu</u> Nov 06	Scattered Showers	56°/46°	30 %
<u>Fri</u> Nov 07	Partly Cloudy	66°/51°	0 %
<u>Sat</u> Nov 08	Partly Cloudy	69°/51°	20 %
<u>Sun</u> Nov 09	Showers	66°/53°	50 %
<u>Mon</u> Nov 10	Showers	68°/52°	60 %

Last Updated Saturday, November 1, 2003, at 12:11 PM Pacific Standard Time (Saturday, 3:11 PM EST)

03-1102	Porta Potty, inc	\$	1,080 00		
03-1103	Holiday Inn	\$	3,000 00	30 people	\$1,000.00
		\$	1,000 00	10 people	CHANGED TO 10 ROOMS
03-1104	Marsh USA	303-300-4031/48			
03-1105	Hyatt Hotel	\$	3,000 00	31 people	CANCELLED
03-1106					
03-1107					
03-1108					

Cost for ANCON					
shift 1	\$	30 000 00			
shift 2	\$	18 000 00			
Cost for ACTI					
shift 1	\$	40 000 00	(70% equip /30% personell - 36 people)		
shift 2	\$	24 000 00	(70% equip /personnell - 20 people)		
Cost for PEG Labor (IT)	\$	300 00		Asked for accountant assistance from OSRO to discuss cost/awaiting cost sheets for comparison	
Robert Godoy			2 people/3 hours		
			reguar hours		
Cost for Spili Team	\$	3,000 00	food		
			hotel		
			set-up, etc		
			49 employees -180 contractors 6 fed/agency (235 people)		
			6 people Non-Exempt		

Mirrelle's Catenng	\$	12,000 00	50 per person/per day X 3 shifts X 250.00 people	(640 meals)
Porta Potty's	\$	200 00	60 per unit per weeo X 18 units / 7 days	
Hotel	\$	1,000 00	10 rooms X 100 00 per room	
Helicopter	\$	6,000 00	1500 00 per hour (approx 4 hours)	
Mutual A Fund	\$	11 000 00		
Safety Expense	\$	5,000 00	20 personnell	
PEP Staff Non Exempt Staff	\$	500 00		
PEP Exempt Staff	\$	7,500 00		
Security Team	\$	4,500 00		
	\$	9,000 00		
	\$	172,000.00		

NOTES

COST FOR OUTSIDE AGENCY'S (COAST GUARD, ETC ) NOT INCLUDED  
WILL BE BILLED 3 TO 4 MONTHS LATER

INCURANCE COMPANY CONTACTED - MARSH USA 800-252-4670

AWAITING ACTI/ANCON COST SHEETS FOR ACTUALS

**PACIFIC ENERGY GROUP, LLC**  
*Long Beach, CA*

**DOMINGUEZ CHANNEL SPILL INCIDENT**

**FIELD REPORT**

**Time Received:**      **08:00 hrs. Nov. 6, 2003**

**Report:**

*At Approximately 05:30 hours on November 6, 2003, it was reported that Pacific Energy Group's Line 508 which carries SJV Crude Oil had a major oil spill leak as a result of UNKNOWN CAUSES.*

*The Oil Spill Leak was reported to have occurred at the intersection of Wilmington Ave. and 223<sup>rd</sup> Street, where Line 508 crosses over Dominguez Channel.*

*The Total Volume of SJV Crude Oil Spilled into Dominguez Channel and the Surrounding Streets is UNKOWN at this time.*

**Signed:**      **PEG – Field Operations Supervisor**

**PACIFIC ENERGY GROUP, LLC**  
*Long Beach, CA*

**DOMINGUEZ CHANNEL SPILL INCIDENT**

**FIELD REPORT**

**Time Received:**      **08:00 hrs. Nov. 6, 2003**

**Report:**

*At Approximately 05:30 hours on November 6, 2003, it was reported that Pacific Energy Group's Line 508 which carries SJV Crude Oil had a major oil spill leak as a result of UNKNOWN CAUSES.*

*The Oil Spill Leak was reported to have occurred at the intersection of Wilmington Ave. and 223<sup>rd</sup> Street, where Line 508 crosses over Dominguez Channel.*

*The Total Volume of SJV Crude Oil Spilled into Dominguez Channel and the Surrounding Streets is UNKOWN at this time.*

**Signed:**      **PEG – Field Operations Supervisor**

No.: 2

**PACIFIC ENERGY GROUP, LLC**  
*Long Beach, CA*

**DOMINGUEZ CREEK SPILL INCIDENT**

**SPILL MANAGEMENT TABLETOP BRIEFING**

**FIELD REPORT**

**Time Received:      08:02 hrs., Nov. 6, 2003**

**Report:**

The Media is making up the amount of OIL that PEG has spilled.

They are stating that it is over 420,000 gallons:

**Signed:    PEG - FIELD OPERATIONS**

No.: 2

**PACIFIC ENERGY GROUP, LLC**  
*Long Beach, CA*

**DOMINGUEZ CREEK SPILL INCIDENT**

**SPILL MANAGEMENT TABLETOP BRIEFING**

**FIELD REPORT**

**Time Received: 10:15 hrs., Nov. 6, 2003**

**Report:**

**An Over flight reports that Crude Oil has been sighted  
In the Consolidated Slip in E. Basin heading towards  
Cerritos Channel**

**We need more boom, boats & bodies.**

***Signed:* PEG - FIELD OPERATIONS**



**PACIFIC ENERGY GROUP, LLC**  
*Long Beach, CA*

**DOMINGUEZ CREEK SPILL INCIDENT**

**SPILL MANAGEMENT TABLETOP BRIEFING**

**FIELD REPORT**

**Time Received:      10:25 hrs., Nov. 6, 2003**

**Report:**

*The California Department of Fish & Game – OSPR reported to us that a Large flock of Birds in the Dominguez Channel approximately 1.5 miles downstream from the initial Incident Spill Site, appear to be Oiled.*

*They want to know what PEG'S Spill Management Team is Going To Do?*

**Please advise ASAP!**

Signed: **PEG - FIELD OPERATIONS**

No.: 5

***PACIFIC ENERGY GROUP, LLC***  
*Long Beach, CA*

**DOMINGUEZ CREEK SPILL INCIDENT**

***SPILL MANAGEMENT TABLETOP BRIEFING***

---

**FIELD REPORT**

**Time Received:      10:35 hrs., Nov. 6, 2003**

**Report:**

The Marina Manager in the Consolidated Slip Area wants to know who is going to pay for the cleanup of his marina and for his customers' boats.

**Signed:    PEG - FIELD OPERATIONS**

No.: 6

***PACIFIC ENERGY GROUP, LLC***  
*Long Beach, CA*

**DOMINGUEZ CREEK SPILL INCIDENT**

***SPILL MANAGEMENT TABLETOP BRIEFING***

---

**FIELD REPORT**

**Time Received: 10:40\_hrs., Nov. 6, 2003**

**Report:**

The Adios Reports have been confirmed by Field Operations that the oil is too viscous to pick up with traditional vac trucks. The water temperature is lower than the pour point of the oil.

**Signed: PEG - FIELD OPERATIONS**

**PACIFIC ENERGY GROUP, LLC**  
*Long Beach, CA*

**DOMINGUEZ CREEK SPILL INCIDENT**  
**SPILL MANAGEMENT TABLETOP BRIEFING**

---

**FIELD REPORT**

**Time Received:**                    11:05 hrs., Nov. 6, 2003

**Report:**

**It appears that at the various Boom Deployment Sites,  
Security is Lacking.**

**Reporters and the General Public are able to wander into  
The work areas.**

**We need help in establishing well defined work zones.**

**Signed: PEG - FIELD OPERATIONS**

**PACIFIC ENERGY GROUP, LLC**  
*Long Beach, CA*

**DOMINGUEZ CREEK SPILL INCIDENT**

**SPILL MANAGEMENT TABLETOP BRIEFING**

**FIELD REPORT**

**Time Received:**      **12: 25 hrs., Nov. 6, 2003**

**Report:**

*A Rail Road Official has arrived at our On Site Command Post located at the Initial Spill Site and informed us that he has a problem with our Operations Section Personnel wearing Orange Vests because the RR classifies Orange as an Emergency Color & when the Train Engineer sees Orange, he will automatically stop the train.*

*He also has a problem with some of our life Jackets because they are also Orange.*

**WHAT AM I TO DO?**

**Signed:    PEG - FIELD OPERATIONS**

No.: 9

***PACIFIC ENERGY GROUP, LLC***

*Long Beach, CA*

**DOMINGUEZ CREEK SPILL INCIDENT**

***SPILL MANAGEMENT TABLETOP BRIEFING***

**FIELD REPORT**

**Time Received:      12:30 hrs., Nov. 6, 2003**

**Report:**

**Field Operations Personnel have not had lunch. Who is going to provide this for them?**

**How do we decon them so that they can eat lunch safely?**

**Signed:    PEG - FIELD OPERATIONS**

## Fire Department Training Proposed Outline for 2004

Propose scheduling class in March – April time frame to avoid potential wet weather and overly warm weather. Consider using Dominguez Hills for classroom and the availability of tanks and vaults. Would also like to consider having a contractor excavation a trench to simulate a trench rescue in addition to vaults and tank floating pans.

- I. Foam Trailer Operations
  - a. Slide Presentation
  - b. Field Op
  
- II. Tank Farm Emergencies - Fires
  - a. Video Presentation
  - b. Foam Calculations discussion
  
- III. Confined Space Rescue/Recovery Drill – *It is proposed that we provide a training ground only regarding this exercise. There really is not sufficient time to provide a training course that would be adequate enough to be considered training for an actual drill op. It is proposed that we invite each department's heavy rescue squad to participate in a scenario that we jointly develop.*
  - a. Video or slide presentation regarding the pitfalls of tank and pipeline CSE rescue.
  - b. Floating Roof scenario
  - c. Vault/Sump Scenario
  - d. "Over the Edge" (using the pond or off one of the roads for terrain change)
  - e. *Trench Scenario*
  
- IV. Containment Applications
  - a. Dams
  - b. Weirs
  - c. Boom Deployment
  - d. Vetter products demonstration (equipment provided on the foam trailers).

AGENDA FOR FIREMEN TRAINING  
JANUARY 21<sup>ST</sup> AND JANUARY 22<sup>ND</sup>, 2003  
5900 Cherry Avenue, Long Beach, California

9:00 INTRODUCTION

9:15 PACIFIC PIPELINE SYSTEM LLC OVERVIEW

Pipeline System  
Pipeline Operations  
Worst Case Discharge Potential

EMERGENCY RESPONSE NOTIFICATIONS

Response Notifications Procedures  
Response Priorities and Objectives  
PPS Emergency Response Team

9:45 MTA RIGHT-OF-WAY

Emergency Response Railroad Right-of-Way

10:15 Break

10:30 START FIELD EXERCISES

Pipeline Valve Operation  
Underflow Dams and Storm Drains  
Control Center Operations  
Floating Roof Tank Rescue Discussion

11:45 LUNCH (Provided)

12:30 COMPLETE FIELD EXERCISES

2:00 CLOSING COMMENTS, QUESTIONS & ANSWERS

Please reply by email or telephone with the number of participants from your unit on each day. The same agenda will be followed each day so participants only need to attend one day.

