



**NATIONAL TRANSPORTATION SAFETY BOARD**

**Office of Aviation Safety**

**Western Pacific Region**

**May 15, 2009**

**ACCIDENT REPORT PHOTOGRAPHS**

**WPR11CA112**

**This document contains 04 embedded photos.**

**(5 pages)**



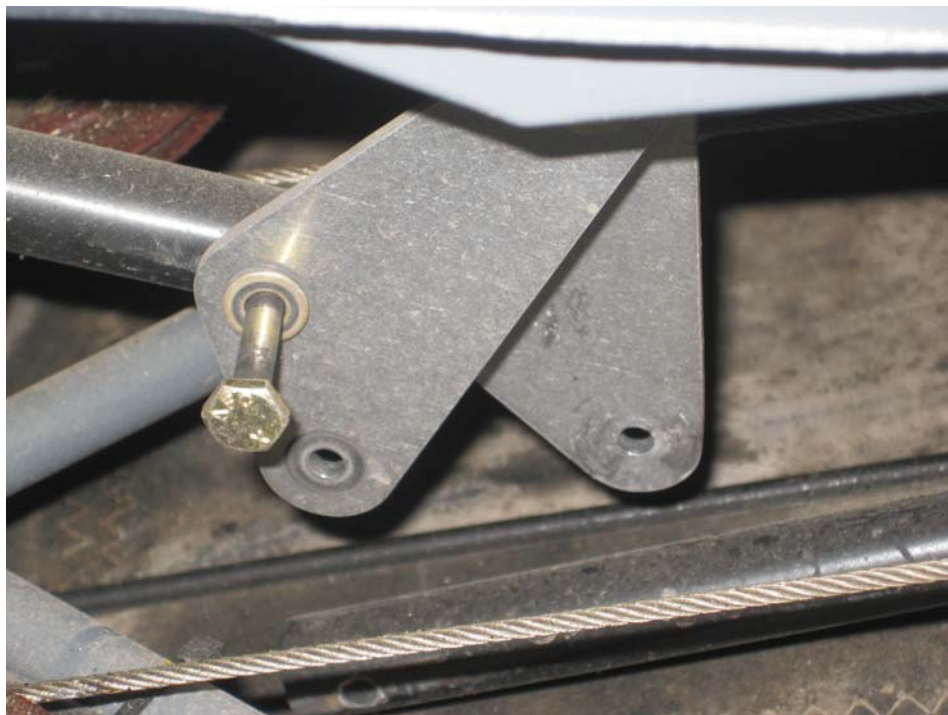
**Photo 1: Airplane on the right side of the runway.**



**Photo 2: Front view of airplane**



**Photo 3: the disconnected elevator control tube with the loose bolt removed.**



**Photo 4: the disconnected elevator control tube as found after the accident.**