

UNITED STATES GOVERNMENT FLIGHT INFORMATION PUBLICATION

U.S. TERMINAL PROCEDURES

SOUTHEAST (SE) VOL 3 OF 4

INSTRUMENT APPROACH PROCEDURES • STANDARD TERMINAL ARRIVALS

DEPARTURE PROCEDURES • AIRPORT DIAGRAMMS

EFFECTIVE 0901Z
TO 0901Z

04 NOV 1999

30 DEC 1999

Consult NOTAMs for latest information

CONSULT THE CHANGE NOTICE (CN) EFFECTIVE 02 DEC 1999 FOR
REVISED INSTRUMENT PROCEDURE CHARTS FOR THIS VOLUME



Including Puerto Rico
and the Virgin Islands

TABLE OF CONTENTS

Inoperative Components Table.....	Inside Front Cover	Legend — Departure Procedures and Standard Terminal Arrival Charts.....	I1
Explanation of Terms/Landing Minima Format.....	A1	Legend — Airport Diagram/Sketch.....	K1
Index of Terminal Charts and Minimums.....	B1	Legend — Approach Lighting Systems.....	L1
IFR Take-off Minimums and Departure Procedures.....	C1	MLS Channeling and Frequency Pairing.....	M1
Rate of Climb Table.....	D1	Radar Minimums.....	N1
IFR Alternate Minimums.....	E1	Standard Terminal Arrival Charts.....	P1
General Information and Abbreviations.....	F1	Terminal Charts.....	Page 1
Legend — IAP Planview.....	G1	LORAN TD Correction Table.....	Opposite Inside Back Cover
Legend — IAP Profile.....	H1	Rate of Descent Table.....	Inside Back Cover
		Area of Coverage.....	Back Cover



Published by the
U.S. Department of Commerce
National Oceanic and Atmospheric Administration
National Ocean Service



PUBLISHED IN ACCORDANCE WITH INTERAGENCY AIR CARTOGRAPHIC COMMITTEE
SPECIFICATIONS AND AGREEMENTS APPROVED BY:
DEPARTMENT OF DEFENSE * FEDERAL AVIATION ADMINISTRATION * DEPARTMENT OF COMMERCE

Amdt 2A 99280

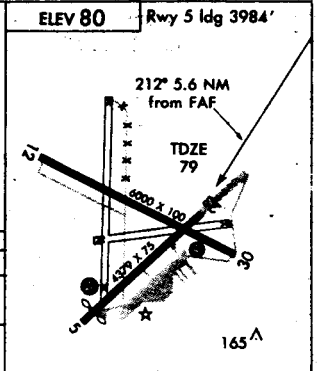
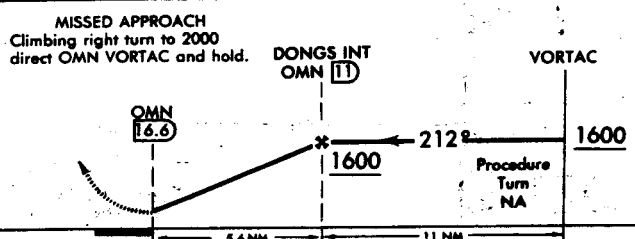
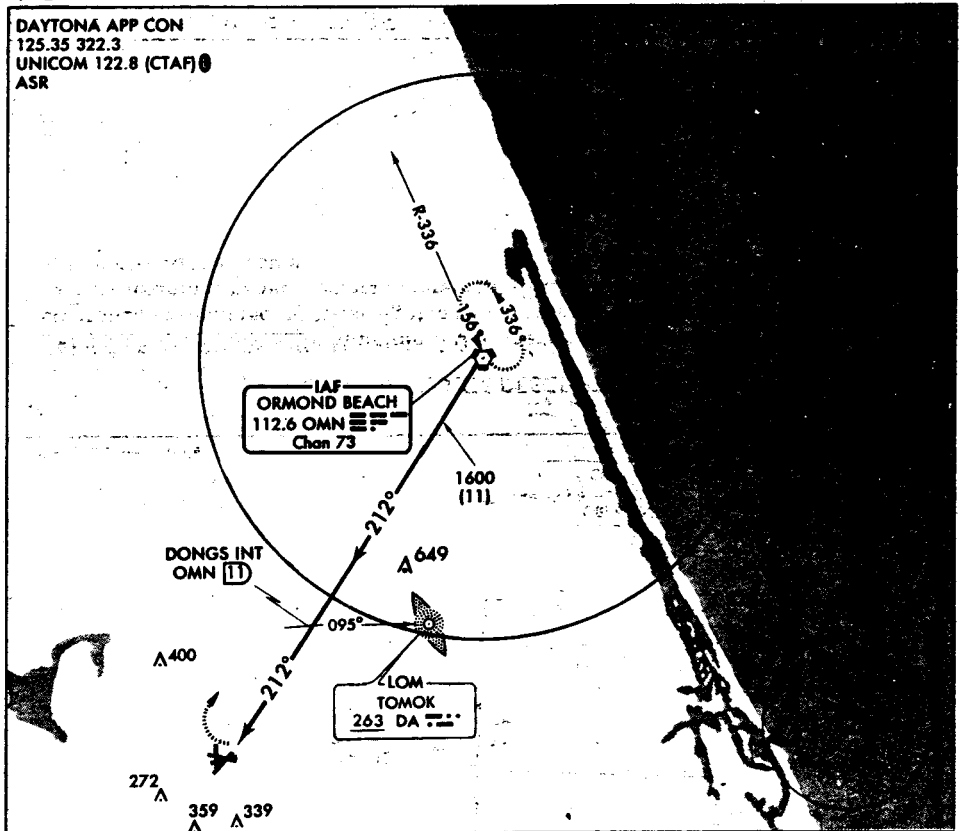
48

SE-3, 4 NOV 1999

VOR or GPS RWY 23

DELAND MUNI-SIDNEY H. TAYLOR FIELD (DED)
AL-483 (FAA) DELAND, FLORIDA

DAYTONA APP CON
125.35 322.3
UNICOM 122.8 (CTAF) ☉
ASR



CATEGORY	A	B	C	D
S-23	640-1 561 (600-1)		640-1½ 561 (600-1½)	640-1¾ 561 (600-1¾)
CIRCLING	640-1 560 (600-1)		640-1½ 560 (600-1½)	680-2 600(600-2)

Use Daytona Beach altimeter setting.

☉ NA

REIL Rwy 30 ☉
MIRL Rwys 5-23 and 12-30 ☉

FAF to MAP 5.6 NM					
Knots	60	90	120	150	180
Min:Sec	5:36	3:44	2:48	2:14	1:52