

Date: 7/1/05 Tach: LYCOMING IO-360-A2B
Sn L-3664-S1A DISASSEMBLED DUE TO BROKEN
THROUGH BOLT, CRANKSHAFT GROUND TO 11.03", CRANKCASE
OVERHAULED BY CSI, ENGINE REASSEMBLED I/A/W LYCOMING
OVERHAUL MANUAL, INST. NEW MAIN & ROD BRGS, ROD
NUTS & BOLTS, CAMSHAFT, TAPPETS, PISTONS, RINGS, EXH &
INT. GUIDES, FUEL INJECTION NOZZLES & SPARE PLUGS

Zephyr Aircraft Engines, Inc.

Municipal Airport
39320 B Avenue • Zephyrhills, FL 33542

W.O. No. 25127

FA.A. APPROVED REPAIR STATION #V14R597M

Authorized signature

C-WINGS, INC.

"Serving Florida Aviation Over :
7/22/05 N3670Q Lycoming IO-360-A2E
Tach: 1946.75 TSMOH

Installed repaired engine from Zephyr (see last entry). Installed
for hoses). All engine attach hardware to mount was replaced by
mount isolators were replaced by Lord mount. Exhaust riser was
muffler was overhauled P/N 169-9500 14-49 worked performed t
8130's). Engine controls were checked for travel and cushion all
engine cowling were cleaned and installed. Engine was ground n
perimeters were checked for proper operation all check O.K.

All worked was performed I/A/W Beechcraft A23-24 Maintenan

Raymond Keith Exum A&F

LYCOMING IO-360-A2B
ENGINE DUE TO BROKEN
MAFT GROUND TO M.03", CRANKCASE
NE REASSEMBLED I/A/W LYCOMING
ST. NEW MAIN & ROD BRGS, ROD
TAPPETS, PISTONS, RINGS, EXH &
IN NOZZLES & SPARE PLUGS

C.

7M  Authorized Signature

C-WINGS, INC.

"Serving Florida Aviation Over 55 Years"

7/22/05 N3670Q Lycoming IO-360-A2B S/N L-3664-51A

Tach: 1946.75

TSMOH: 490.85

or Repair

Installed repaired engine from Zephyr (see last entry). Installed all new fluid lines (see paper work for hoses). All engine attach hardware to mount was replaced by Beechcraft P/N. All engine to mount isolators were replaced by Lord mount. Exhaust riser was repaired P/N 169-9500 15-13 and muffler was overhauled P/N 169-9500 14-49 worked performed by Aerospace Welding, Inc. (See 8130's). Engine controls were checked for travel and cushion all O.K. Propeller installed and engine cowling were cleaned and installed. Engine was ground run for leak check and all engine perimeters were checked for proper operation all check O.K.

All worked was performed I/A/W Beechcraft A23-24 Maintenance Manual.

Raymond Keith Exum A&P 



Line# 000010 Part Number PE-000-0380 Val Type Description TACHOMETER CABLE
 2199.27

WING	TODAY'S FLIGHT	TOTAL TIME IN SERVICE	Description of Inspections, Tests, Repairs and Alterations
ME 2199.27		2199.27	Entries must be endorsed with Name, Rating and Certificate Number of Technician or Repair Facility. (See back pages for other specific entries.)

EXUM AVIATION LLC
 "QUALITY MAINTENANCE YOU DESERVE"

T-RAME
Approved 2010

7/21/2010 N3670Q BEECHCRAFT A23/24 S/N MA-257
 TACH: 2199.27 ACTT: 2199.27

REMOVED INSPECTION PANELS AND FAIRINGS FOR INSPECTION AND LUBRICATION AS PER BEECH SHOP MANUAL. INSPECTED SKINS WINDOWS AND ALL ATTACHING SURFACES. INSPECTED AND LUBRICATED DOORS AND SEALED LEAK IN ENTRY DOOR AND TREATED WITH DC-4 COMPOUND. OP'S NO LEAKS FOUND. INSPECTED INTERIOR ALONG WITH SEATS AND SEAT BELTS. GREASED GEAR AND INSPECTED. ALL BEARINGS PACKED AND TIRE PRESSURE SET TO PROPER PSI. REPLACED NOSE GEAR TIRE P/N 072-314-0 LOT NUMBER 0111S00496. REPLACED TUBE P/N 092-315-0 LOT 03/10.
 INSTALLED ALL NEW BRAKE LININGS P/N 66-105 ON BOTH SIDES. SERVICED BRAKE RESAVOIR TO PROPER LEVEL.
 INSPECTED SHIPS MAIN BATTERIES AND FOUND IN GOOD CONDITION AND SERVICED.
 INSPECTED ELT I/A/W FAR 91.207 PAR (D) BATTERY EXPIRES JUNE/2011.
 CHECKED ENGINE CONTROLS FOR SMOOTH OPERATION. REPLACED INSTRUMENT FILTERS SEE REMINDER ATTACHED TO THIS ENTRY.

CONTINUED NEXT PAGE →

YEAR 20 DATE

REMOVED CORROSION FROM UNDER RIGHT HAN TREATED AREAS AND PAINTED. INSTALLED NEW INSTALLED NEW TACH CABLE P/N PE-000-038 COMPOUND TO ENTRANCE WAY OF WING. CLEAN OF UPPER COWL. CHECKED FUEL GAUGES AND F CLEANED CHECKED THE RE INSTALLED. FUEL CE CHECKED ALL NAV, STROBE ALONG WITH PITOT ALL AD'S CHECK THRU T-DATA 2010-14 SEE CC 73-20-07 R2 DUE 100 HR. C/W *AD87-02-08 I ALL WORK LISTED ABOVE WAS PERFORMED I/A FAR 43 APPEDIX D SCOPE OF DETAILS. I CERTIF I/A/W ANNUAL INSPECTION AND HAS BEEN DI AT THIS TIME.
 AIRCRAFT APPROVED FOR RETURN TO SERVICE T

RAYMOND KEITH EXUM
 A&F

END

Airborne

Air Filter Change Reminder

Changed at: 2199.27 Hrs. Next Change: Annual Hrs.
 7/19/10 Date



SI300-21 July 2002

of Inspections, Tests, Repairs and Alterations
endorsed with Name, Rating and Certificate Number of
repair Facility. (See back pages for other specific entries.)

ATION LLC
ANCE YOU DESERVE"

CRAFT A23/24 S/N MA-257
ACTT: 2199.27

OR INSPECTION AND LUBRICATION AS PER
MS AND ALL ATTACHING SURFACES. INSPECTED
TRY DOOR AND TREATED WITH DC-4
NTERIOR ALONG WITH SEATS AND SEAT BELTS. .
PACKED AND TIRE PRESSURE SET TO PROPER
LOT NUMBER 0111500496. REPLACED TUBE

5 ON BOTH SIDES. SERVICED BRAKE RESAVOIR

IN GOOD CONDITION AND SERVICED.
ATTERY EXPIRES JUNE/2011.
RATION. REPLACED INSTRUMENT FILTERS SEE

T PAGE →

YEAR
20
DATE

REMOVED CORROSION FROM UNDER RIGHT HAND WING STALL TAB AND AROUND ELT ANTENNA.
TREATED AREAS AND PAINTED. INSTALLED NEW FLAP SPRING P/N 100942BB1003-84.
INSTALLED NEW TACH CABLE P/N PE-000-0380. CLEANED AND APPLIED WING WALK
COMPOUND TO ENTRANCE WAY OF WING. CLEANED OUT FORWARD WATER DRAINS ON TOP AFT
OF UPPER COWL. CHECKED FUEL GAUGES AND FOUND O.K. LEFT SENDER STICKING AND WAS
CLEANED CHECKED THE RE INSTALLED. FUEL CELL LEAK CHECKED NO LEAKS FOUND.
CHECKED ALL NAV, STROBE ALONG WITH PITOT HEAT, STATIC PORT AND STALL ALL CHEK O.K.
ALL AD'S CHECK THRU T-DATA 2010-14 SEE COMPLIANCE IN AIRCRAFT RECORDS. C/W *AD
73-20-07 R2 DUE 100 HR. C/W *AD87-02-08 NEXT DUE 100 HR.
ALL WORK LISTED ABOVE WAS PERFORMED I/A/W BEECHCRAFT A23/24 SHOP MANUAL AND
FAR 43 APPEDIX D SCOPE OF DETAILS. I CERTIFY THAT THIS AIRCRAFT HAS BEEN INSPECTED
I/A/W ANNUAL INSPECTION AND HAS BEEN DETERMINED TO BE IN AN AIRWORTHY CONDITION
AT THIS TIME.
AIRCRAFT APPROVED FOR RETURN TO SERVICE THIS DATE.

RAYMOND KEITH EXUM
A&



END

Airborne

Air Filter Change Reminder

Changed at: 2199.27 Hrs. Next Change: Annual Hrs.

7/19/10 Date

SI300-21 July 2002

5

6

DATE	RECORDING TACH	TODAY'S	TOTAL
19__			

EXUM AVIATION LLC
"QUALITY MAINTENANCE YOU DESERVE"

7/21/10 N3670Q IO-360-A2B S/N L-3664-51A
TACH: 2199.27 TSMOH: 743.37

Edge
Actual 2010

DRAINED OIL AND TOOK MID STREAM SAMPLE FOR ROUTINE ANALYSIS. INSTALLED NEW CHAMPION OIL FILTER P/N CH48109-1 AND SERVICED ENGINE WITH 8 QUARTS OF PHILLIPS 20/50 XC OIL. CUT OPEN FILTER NO METAL FOUND. CLEANED CHIP DETECTOR AND RE INSTALLED. LUBED STARTER I/A/W MANUFACTURE INSTRUCTIONS. CHECKED MAG TIMMING AND FOUND CORRECT. CLEANED GAPPED AND REPLACED SPARK PLUGS. CLEANED INSPECTED FUEL INJECTORS AND RE INSTALLED. REPLACED INDUCTION AIR FILTER P/N BA-3. INSTALLED NEW TACH CABLE P/N PE-000-0380. INSPECTED ENGINE MOUNT AND ALL ATTACHING PARTS NO FAULTS FOUND. COMPRESSIONS ARE AS FOLLOWS #1 75/80 #2 73/80 #3 76/80 #4 75/80. ENGINE WAS GROUND RUN LEAK CHECKED AND ALL PERIMETERS CHECK O.K. ALL WORK LISTED ABOVE WAS PERFORMED I/A/W BEEHCRAFT A23/24 SHOP MANUAL AND FAR APPENDIX D SCOPE OF DETAILS. ALL AD'S CHECK THRU T-DATA 2010-14 SEE IN AIRCRAFT RECORDS.

C/W *AD04-10-14C1 NO PROP STRIKE OR SUDDEN VISUAL INSPECTION OF CLAMPS AND AS PER PAR (NOT INSTALLED.

I CERTIFY THAT THIS ENGINE HAS BEEN INSPECTED AND HAS BEEN FOUND TO BE IN AN AIRWORTHY CONDITION. ENGINE APPROVED FOR RETURN TO SERVICE THIS
RAYMOND KEITH EXUM
A&P [REDACTED]

[REDACTED] END

—————CONTINUED NEXT PAGE—————>

**EXUM AVIATION LLC
MAINTENANCE YOU DESERVE™**

670Q IO-360-A2B S/N L-3664-51A
: 2199.27 TSMOH: 743.37

REAM SAMPLE FOR ROUTINE ANALYSIS. INSTALLED
I CH48109-1 AND SERVICED ENGINE WITH 8 QUARTS
OPEN FILTER NO METAL FOUND. CLEANED CHIP
UBED STARTER I/A/W MANUFACTURE INSTRUCTIONS.
UND CORRECT. CLEANED GAPPED AND REPLACED
TED FUEL INJECTORS AND RE INSTALLED.
ER P/N BA-3. INSTALLED NEW TACH CABLE P/N PE-
MOUNT AND ALL ATTACHING PARTS NO FAULTS FOUND.
NS #1 75/80 #2 73/80 #3 76/80 #4 75/80.
K CHECKED AND ALL PERIMETERS CHECK O.K.
PERFORMED I/A/W BEECHCRAFT A23/24 SHOP
SCOPE OF DETAILS. ALL AD'S CHECK THRU T-DATA
DRDS.

CONTINUED NEXT PAGE →

C/W *AD04-10-14C1 NO PROP STRIKE OR SUDDEN STOPPAGE. C/W *AD08-14-07 BY
VISUAL INSPECTION OF CLAMPS AND AS PER PAR (J). C/W *AD09-26-12 FOUND PARTS
NOT INSTALLED.

I CERTIFY THAT THIS ENGINE HAS BEEN INSPECTED I/A/W AN ANNUAL INSPECTION
AND HAS BEEN FOUND TO BE IN AN AIRWORTHY CONDITION AT THIS TIME.
ENGINE APPROVED FOR RETURN TO SERVICE THIS DATE.

RAYMOND KEITH EXUM
A&P [REDACTED]

[REDACTED] END _____

Engine Record General Information

Manufacturer LYCOMING Model IO-360-AB

Serial A364-51A Type Certificate _____

This engine is currently installed in aircraft N3670Q

Minimum Octane Fuel _____ Oil Grade: Summer _____ Winter _____

Magneto Time _____ Point Setting _____ Firing Order _____

Spark Plug Gap _____

Manufacturer recommended overhaul at _____ hours



Engine Overhaul 97

DATE 19 97	RECORDING TACH TIME	TODAY'S FLIGHT	TOTAL TIME IN SERVICE	Description of Inspections, Tests, Repairs and Alterations Entries must be endorsed with Name, Rating and Certificate Number of Technician or Repair Facility. (See back pages for other specific entries.)
02-05-97	1476.01	-	1476.01	REMOVED ENGINE DUE TO ENGINE SEIZED IN FLIGHT, PERFORMED ENGINE TEARDOWN & INSPECTION, ENGINE MAJOR OVERHAULED IN ACCORDANCE WITH TEXTRON LYCOMING DIRECT DRIVE ENGINE OVERHAUL MANUAL #60294-7-7 AND APPLICABLE S.I, S.B. & A.D.'S, REPLACED CRANKSHAFT WITH SERVICEABLE CRANKSHAFT (STD ON MAIN'S & ROD'S) FROM AIRCRAFT SPECIALTIES SERVICES - SEE YELLOW TAG FOR DETAILS, W.O.# 85356, REPLACED ALL 4 ROD'S DUE TO OLD ROD'S FEELER, REPLACED WITH #LW10646 ROD'S SEE YELLOW TAG FOR DETAILS W.O.# 85933, INSTALLED OVERHAULD CAMSHAFT SEE YELLOW TAG W.O.# 85511, INSTALLED OVERHAULD ROCKER ARM'S SEE YELLOW TAG W.O.# 85514, CRANKSHAFT GEAR INSPECTED &

— CONT —

DATE 19 97	RECORDING TACH TIME	TODAY'S FLIGHT	TOTAL TIME IN SERVICE	Descri Entries Facility.
	CONT	→		REPAIR FLUXED YELLOW PER S- REWORK 1750 BEARIN GEAR 1 EXHAUS SHAFTS & SPRI SPRING

Description of Inspections, Tests, Repairs and Alterations
 Entries must be endorsed with Name, Rating and Certificate Number of Technician or Repair Facility. (See back pages for other specific entries.)

ENGINE DUE TO ENGINE SEIZED IN FLIGHT,
 D ENGINE TEARDOWN & INSPECTION, ENGINE MAJOR
 ED IN ACCORDANCE WITH TEXTRON LYCOMING
 DRINE ENGINE OVERHAUL MANUAL #60294-7-7 AND
 E S.I, S.B. & A.D.'S, REPLACED CRANKSHAFT WITH
 BLE CRANKSHAFT (STD ON MAIN'S & ROD'S) FROM AIRCRAFT
 IES SERVICES - SEE YELLOW TAG FOR DETAILS, W.O. #
 REPLACED ALL 4 ROD'S DUE TO OLD ROD'S FEELER,
 WITH # LW 10646 ROD'S SEE YELLOW TAG FOR DETAILS
 2933, INSTALLED OVERHAULD CAMSHAFT SEE YELLOW
 # 85511, INSTALLED OVERHAULD ROCKER ARM'S SEE
 TAG W.O. # 85514, CRANKSHAFT GEAR INSPECTED &
 - CONT -

DATE	RECORDING TACH TIME	TODAY'S FLIGHT	TOTAL TIME IN SERVICE	Description of Inspections, Tests, Repairs and Alterations Entries must be endorsed with Name, Rating and Certificate Number of Technician or Repair Facility. (See back pages for other specific entries.)
19 97				
	CONT	→		REPAIRED SEE YELLOW TAG W.O. # 85511, INTERNAL STEEL MAGNA- FLUXED SEE YELLOW TAG W.O. # 85511, CRANKCASE REPAIRED, SEE YELLOW TAG, CHUCK NUT ENTERPRISES. INVOICE # 8687 CASE MODIFIED PER S.T.C. SEE 8628 SW NUT NOZZLES INSTALLED. ALL CYLINDERS REWORKED TO P.010 THRU STD ASSEMBLYS, SEE TAG INVOICE # 1750, THE FOLLOWING PARTS INSTALLED NEW, ALL MAIN & ROD BEARINGS, ROD BOLTS, ROD NUTS, ROD BUSHINGS, CRANKSHAFT GEAR LOCK PLATE & BOX, ALL TAPPETS, PUSH RODS, VALVES INTAKE & EXHAUST, VALVE SPRINGS, SEATS, GUIDES, KEEPERS, CAPS, ROCKER SHAFTS, P.RODS P.010, P.STEM PINS & CAPS, RINGS, P.R.V. BALL & SPRING, CASE ^{G.I} REMOVED ^{NO CASE INSTALLED} & ADJUSTABLE P.R.V. CAP INSTALLED, SPRING SEATS REPLACED. INSTALLED NEW MAG KIT SLICK P/N K4567 © ASA 1993
				CONT.

DATE 19 97	RECORDING TACH TIME	TODAY'S FLIGHT	TOTAL TIME IN SERVICE	Description of Inspections, Tests, Repairs and Alterations Entries must be endorsed with Name, Rating and Certificate Number of Technician or Repair Facility. (See back pages for other specific entries.)
	CONT.			INSTALLED NEW OIL PUMP DRIVE SHAFT, BODY, GEAR KIT, GASKETS & OIL DRAW HOSES, LOCKING PLATES & INTERNAL HARDWARE ALL NEW, c/w A.D. # 91-14-22 CRANKSHAFT GEAR, c/w A.D. 93-02-05 FUEL INJECTOR LINES, c/w A.D. 96-09-10 C OIL PUMP GEARS, ENGINE INSPECTED PER FAR. 43 APPENDIX "D" & DAKOTA RIDGE CHECKLIST, SEE A.D. LOG FOR COMPLIANCE, GROUND RUN & LEAK CHECK ALL O.K. SERVICED ENGINE WITH 8 QTS. PHILLIPS MINERAL 20 W50 OIL ALL SPARKPLUGS NEW. ENGINE REQUIRES TEST FLIGHT PER FAR. 91.407 & LOG ENTRY MADE SEE ALL YELLOW TAG'S & MAINTANCE RELEASES ⁶⁶ ELSEWHERE IN RECORDS. 337 FOR NEW NOZZLES IN RECORDS 4

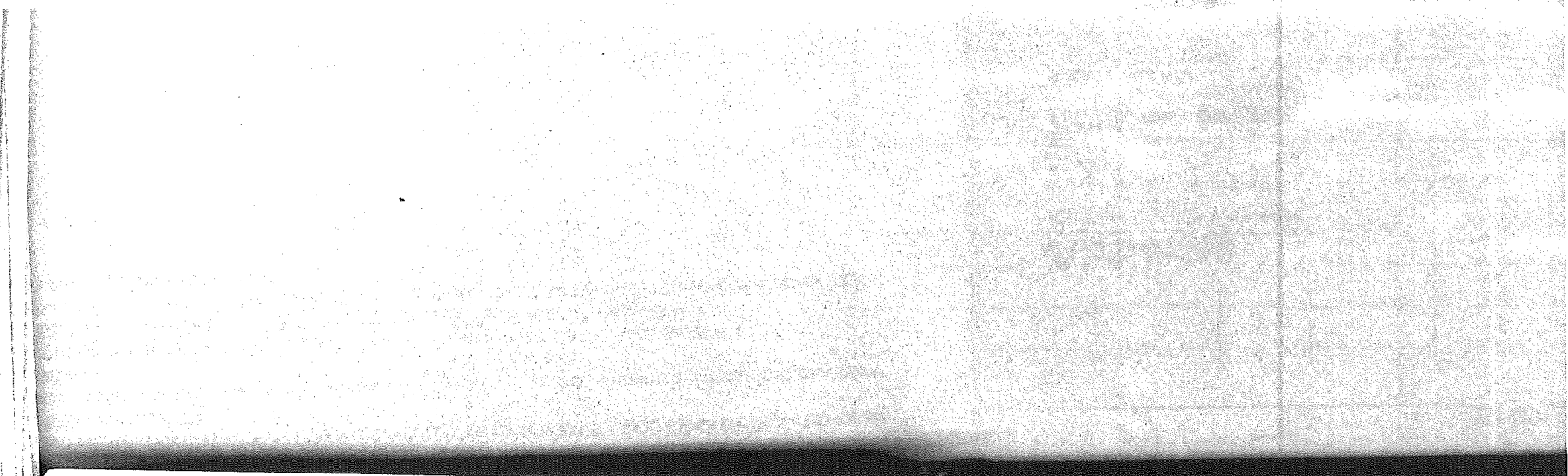
I CERTIFY THAT THIS ENGINE
HAS BEEN INSPECTED IN ACCORDANCE WITH AN

INSPECTION AND WAS DETERMINED TO BE IN
AIRWORTHY CONDITION.

A/E
DAKOTA RIDGE AVIATION, INC.
BOULDER CO.

DATE 19 97	RECORDING TACH TIME	TODAY'S FLIGHT	TOTAL TIME IN SERVICE	Description of Inspections, Entries must be endorsed with Name Facility. (See back pages for other
2/7	1477.32			AIRCRAFT TEST FLIGHT CHECK OOO ✓

Line# 000010
 Part Number PE-000-0380
 Val Type NEW
 Description TACHOMETER CABLE 97



WING	TODAY'S FLIGHT	TOTAL TIME IN SERVICE	Description of Inspections, Tests, Repairs and Alterations
ME	2199.27	2199.27	Entries must be endorsed with Name, Rating and Certificate Number of Technician or Repair Facility. (See back pages for other specific entries.)

YEAR 20
DATE

REMOVED CORROSION FROM UNDER RIGHT HAN TREATED AREAS AND PAINTED. INSTALLED NEW INSTALLED NEW TACH CABLE P/N PE-000-038 COMPOUND TO ENTRANCE WAY OF WING. CLEAN OF UPPER COWL. CHECKED FUEL GAUGES AND F CLEANED CHECKED THE RE INSTALLED. FUEL CE CHECKED ALL NAV, STROBE ALONG WITH PITOT ALL AD'S CHECK THRU T-DATA 2010-14 SEE CC 73-20-07 R2 DUE 100 HR. C/W *AD87-02-08 I ALL WORK LISTED ABOVE WAS PERFORMED I/A. FAR 43 APPEDIX D SCOPE OF DETAILS. I CERTIF I/A/W ANNUAL INSPECTION AND HAS BEEN DI AT THIS TIME. AIRCRAFT APPROVED FOR RETURN TO SERVICE T

EXUM AVIATION LLC
 "QUALITY MAINTENANCE YOU DESERVE"

7/21/2010 N3670Q BEECHCRAFT A23/24 S/N MA-257
 TACH: 2199.27 ACTT: 2199.27

REMOVED INSPECTION PANELS AND FAIRINGS FOR INSPECTION AND LUBRICATION AS PER BEECH SHOP MANUAL. INSPECTED SKINS WINDOWS AND ALL ATTACHING SURFACES. INSPECTED AND LUBRICATED DOORS AND SEALED LEAK IN ENTRY DOOR AND TREATED WITH DC-4 COMPOUND. OP'S NO LEAKS FOUND. INSPECTED INTERIOR ALONG WITH SEATS AND SEAT BELTS. GREASED GEAR AND INSPECTED. ALL BEARINGS PACKED AND TIRE PRESSURE SET TO PROPER PSI. REPLACED NOSE GEAR TIRE P/N 072-314-0 LOT NUMBER 0111S00496. REPLACED TUBE P/N 092-315-0 LOT 03/10. INSTALLED ALL NEW BRAKE LININGS P/N 66-105 ON BOTH SIDES. SERVICED BRAKE RESAVOIR TO PROPER LEVEL.. INSPECTED SHIPS MAIN BATTERIES AND FOUND IN GOOD CONDITION AND SERVICED. INSPECTED ELT I/A/W FAR 91.207 PAR (D) BATTERY EXPIRES JUNE/2011. CHECKED ENGINE CONTROLS FOR SMOOTH OPERATION. REPLACED INSTRUMENT FILTERS SEE REMINDER ATTACHED TO THIS ENTRY.

RAYMOND KEITH EXUM
 A&F

END

CONTINUED NEXT PAGE →

Airborne

Air Filter Change Reminder

Changed at: 2199.27 Hrs. Next Change: Annual Hrs.
 7/19/10 Date



SI300-21 July 2002

of Inspections, Tests, Repairs and Alterations

3 endorsed with Name, Rating and Certificate Number of repair Facility. (See back pages for other specific entries.)

**ITION LLC
INCE YOU DESERVE"**

**CRAFT A23/24 S/N MA-257
ACTT: 2199.27**

OR INSPECTION AND LUBRICATION AS PER
MS AND ALL ATTACHING SURFACES. INSPECTED
TRY DOOR AND TREATED WITH DC-4
INTERIOR ALONG WITH SEATS AND SEAT BELTS.
PACKED AND TIRE PRESSURE SET TO PROPER
LOT NUMBER 0111S00496. REPLACED TUBE

5 ON BOTH SIDES. SERVICED BRAKE RESAVOIR

IN GOOD CONDITION AND SERVICED.
ATTERY EXPIRES JUNE/2011.
RATION. REPLACED INSTRUMENT FILTERS SEE

T PAGE →

YEAR
20
DATE

REMOVED CORROSION FROM UNDER RIGHT HAND WING STALL TAB AND AROUND ELT ANTENNA.
TREATED AREAS AND PAINTED. INSTALLED NEW FLAP SPRING P/N 100942BB1003-84.
INSTALLED NEW TACH CABLE P/N PE-000-0380. CLEANED AND APPLIED WING WALK
COMPOUND TO ENTRANCE WAY OF WING. CLEANED OUT FORWARD WATER DRAINS ON TOP AFT
OF UPPER COWL. CHECKED FUEL GAUGES AND FOUND O.K. LEFT SENDER STICKING AND WAS
CLEANED CHECKED THE RE INSTALLED. FUEL CELL LEAK CHECKED NO LEAKS FOUND.
CHECKED ALL NAV, STROBE ALONG WITH PITOT HEAT, STATIC PORT AND STALL ALL CHEK O.K.
ALL AD'S CHECK THRU T-DATA 2010-14 SEE COMPLIANCE IN AIRCRAFT RECORDS. C/W *AD
73-20-07 R2 DUE 100 HR. C/W *AD87-02-08 NEXT DUE 100 HR.
ALL WORK LISTED ABOVE WAS PERFORMED I/A/W BEECHCRAFT A23/24 SHOP MANUAL AND
FAR 43 APPEDIX D SCOPE OF DETAILS. I CERTIFY THAT THIS AIRCRAFT HAS BEEN INSPECTED
I/A/W ANNUAL INSPECTION AND HAS BEEN DETERMINED TO BE IN AN AIRWORTHY CONDITION
AT THIS TIME.
AIRCRAFT APPROVED FOR RETURN TO SERVICE THIS DATE.

RAYMOND KEITH EXUM
A&P

[Redacted Signature] ND

Airborne
Air Filter Change Reminder
Changed at: 2199.27 Hrs. Next Change: Annual Hrs.
7/19/10 Date
Parker
SI300-21 July 2002

5