

Communication Summary

October 17, 2017

Information from: Michael Bauer



Summary & Factual Information: Mr. Bauer reported that he took a look at the bolt section with a microscope and also with a couple of Materials Laboratory personnel. The bolt had signs of reverse bending fatigue in the area of the threads and then an overload condition to complete the break on both ends.

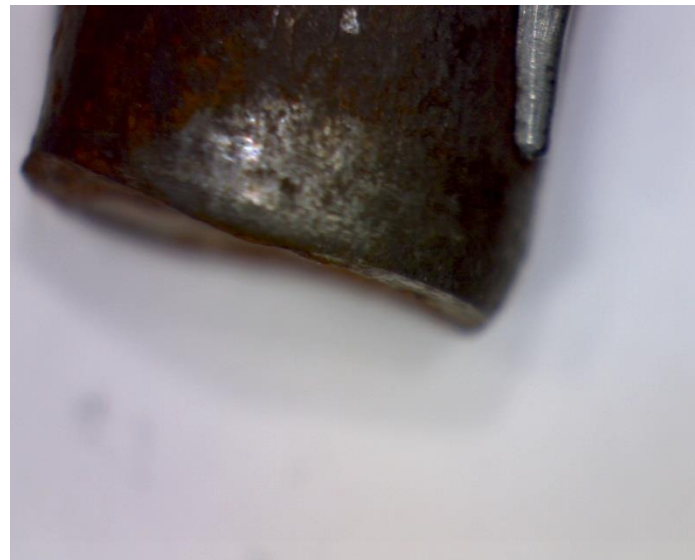
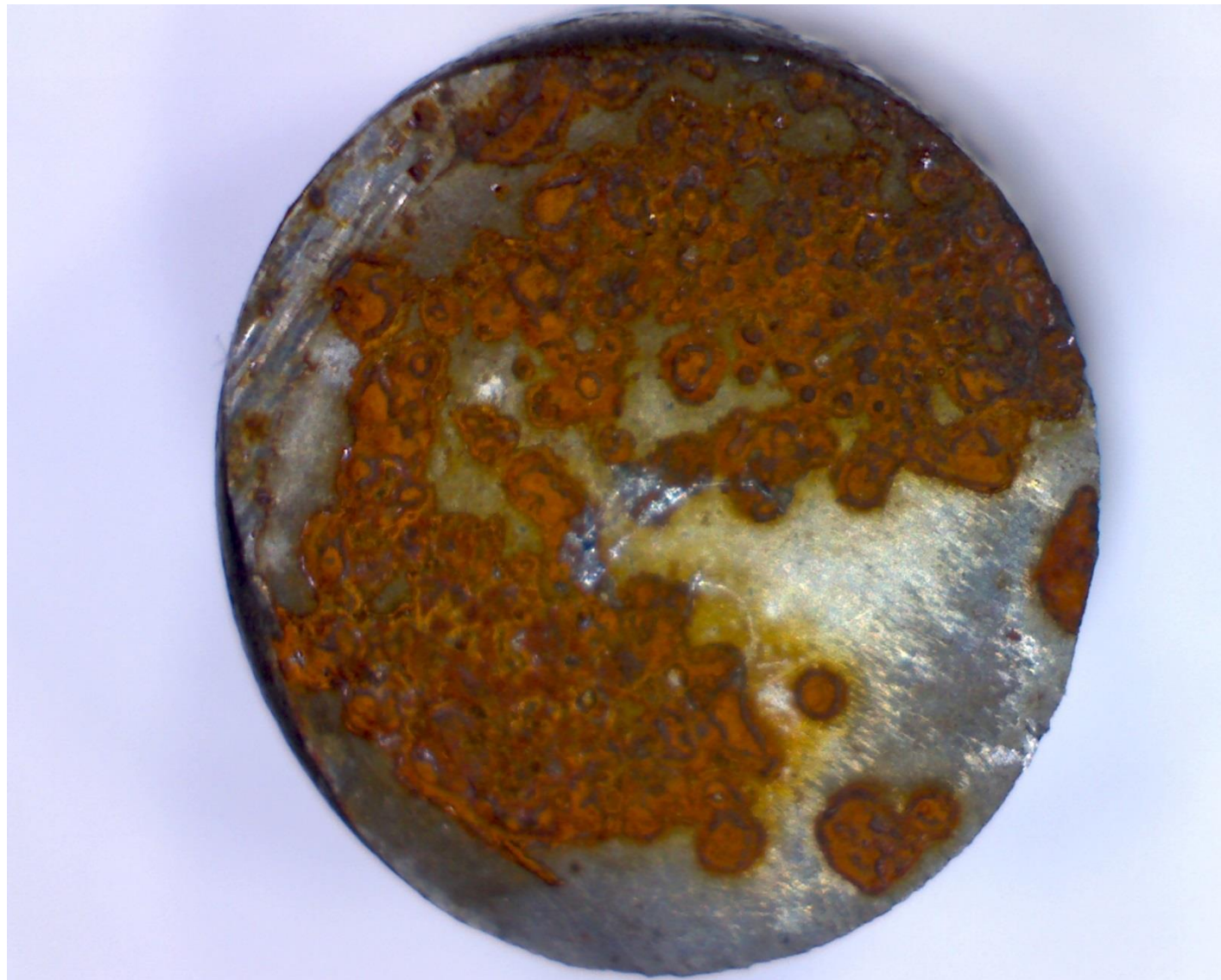
I can attest that the above summary is correct to the best of my knowledge:

Edward F. Malinowski
National Transportation Safety Board
Air Safety Investigator

Left Main Landing Gear Bolt



Upper Side of Bolt



Lower Side of Bolt

