

NETJETS®

Form TC-5XL-53-110306

AIRCRAFT # *N662Q\$*

DATE: *1-16-2013*

REPAIR FACILITY: *GCS@KPKDK*

NETJETS W/O NUMBER: *T2PL6D00298FY*

560XL/S Fuselage Bilge Drain Cleaning

Originator: Mx Tech Services - Jason Profio

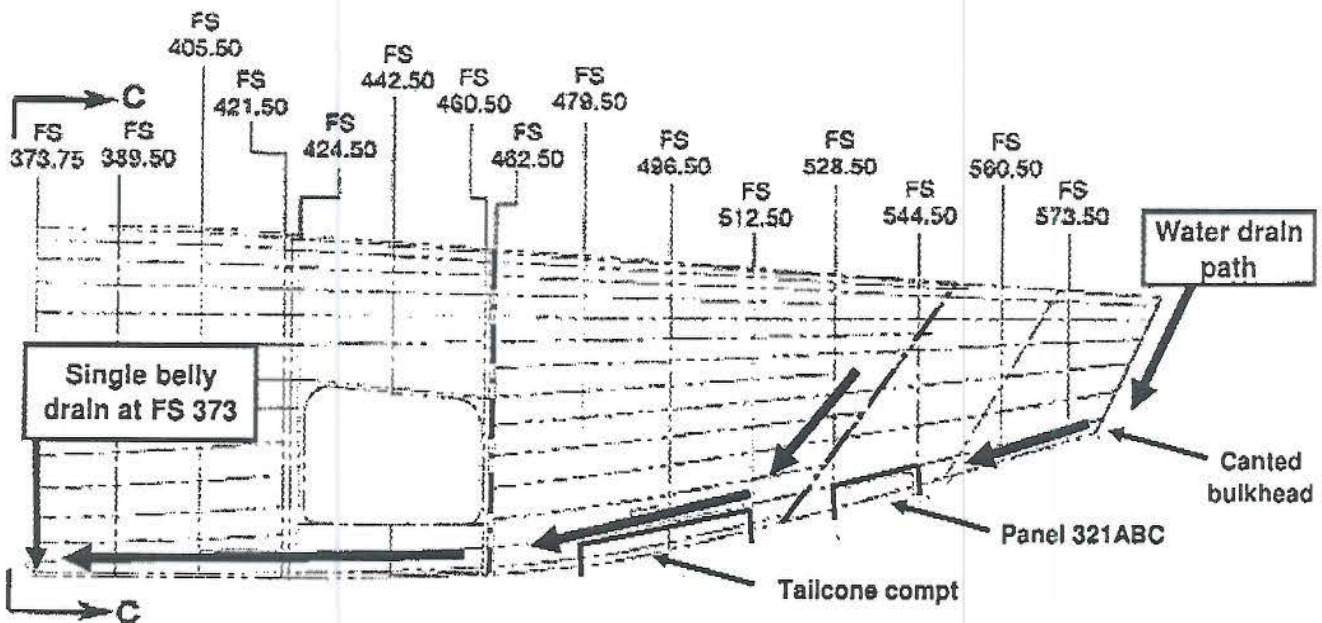
Effectivity: All NetJets 560XL/S fleet aircraft

Purpose: This task is designed to ensure that all rain water drain holes and passages are clean and open from the aft canted bulkhead to the belly drain at FS 373

Procedure:

1. Remove panels 321ABC, 313EC, 313DC, 313CC, 313BC, 314AR, 313AC, 313AL
2. Inspect drain passages at each frame station from FS 573 to belly drain at FS 373 on the lower aircraft centerline for clogging with debris and/or stains indicating evidence of standing water
3. Record below each location where drain passages were clogged and/or water staining was present
 - Drain passages clogged at fuselage station(s)
 - Pooled water staining evidence at fuselage station(s)
4. Clean all dirt and debris from drain passages as necessary
5. Install all removed panels as necessary
6. FAX completed document to NJ Mx Tech Services @ 614-239-2287

<i>SEE ATTACHED NOTES</i>
<i>SEE ATTACHED NOTES.</i>



7793 AFH → 6247 AFC

May. 17. 2011 7:58AM

SBSLOXL-53-16 12/2001 © T002 Pro2

No. 6427 P. 17

NJO 2467 MK

NETJETS[®]

Form TC-5XL-53-110306

AIRCRAFT # N 6 6 2 0 S DATE: 5/17/11

REPAIR FACILITY: NJS DXCR901D

NETJETS W/O NUMBER: 2-121948

17 Months

560XL/S Fuselage Bilge Drain Cleaning

Originator: Mx Tech Services - Jason Profio

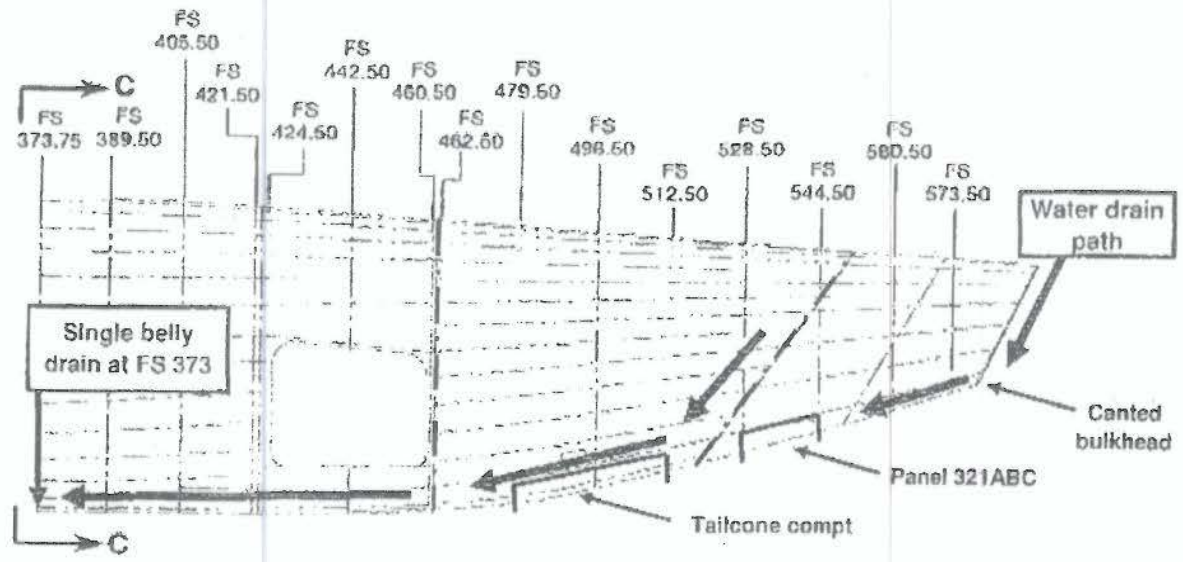
Effectivity: All NetJets 560XL/S fleet aircraft

Purpose: This task is designed to ensure that all rain water drain holes and passages are clean and open from the aft canted bulkhead to the belly drain at FS 373

Procedure:

1. Remove panels 321ABC, 313EC, 313DC, 313CC, 313BC, 314AR, 313AC, 313AL
2. Inspect drain passages at each frame station from FS 573 to belly drain at FS 373 on the lower aircraft centerline for clogging with debris and/or stains indicating evidence of standing water
3. Record below each location where drain passages were clogged and/or water staining was present
 - Drain passages clogged at fuselage station(s)
 - Pooled water staining evidence at fuselage station(s)
4. Clean all dirt and debris from drain passages as necessary
5. Install all removed panels as necessary
6. FAX completed document to NJ Mx Tech Services @ 614-239-2287

389.50, 442.50, 479.50, 528.50
442.50, 528.50



442 RT-8