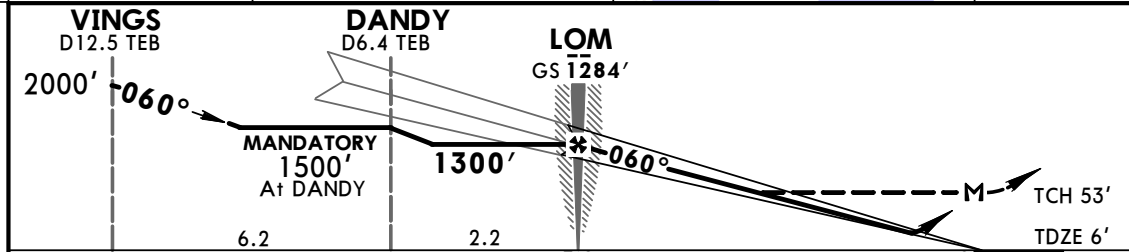


**Factual Report – Attachment 21**  
**TEB Protected Airspace Charts**

**OPERATIONAL FACTORS**

CEN17MA183

BRIEFING STRIP™	D-ATIS	NEW YORK Approach (R)	TETERBORO Tower	Ground
	114.2 132.85	127.6	119.5	121.9
	LOC ITEB <b>108.9</b>	Final Apch Crs <b>060°</b>	GS LOM <b>1284'</b> (1278')	ILS DA(H) <b>206'</b> (200')
<b>MISSED APCH:</b> Climb to 1000', then climbing LEFT turn to 2500' outbound on TEB VOR R-335 to PATRN INT and hold.				
Alt Set: INCHES		Trans level: FL 180		Trans alt: 18000'
1. DME or Radar required. 2. DME from TEB VOR.				MSA TEB VOR



Gnd speed-Kts	70	90	100	120	140	160	MALSR REIL	1000'	2500'	TEB	PATRN
GS	3.00°	372	478	531	637	743		849	↑	↶	
LOM to MAP	3.8	3:15	2:32	2:17	1:54	1:38	1:26				

ILS STRAIGHT-IN LANDING RWY 6			LOC (GS out)			Max Kts	MDA(H)
DA(H) 206' (200')			MDA(H) 480' (474')				
FULL	RAIL or ALS out		RAIL out		ALS out	90	760' (752') - 1
A			RVR 24 or 1/2	RVR 40 or 3/4	RVR 50 or 1	120	760' (752') - 1 1/4
B			RVR 40 or 3/4	RVR 60 or 1/4		140	760' (752') - 2 1/4
C	RVR 18 or 1/2	RVR 40 or 3/4	RVR 50 or 1		1 1/2	165	820' (812') - 2 3/4
D							

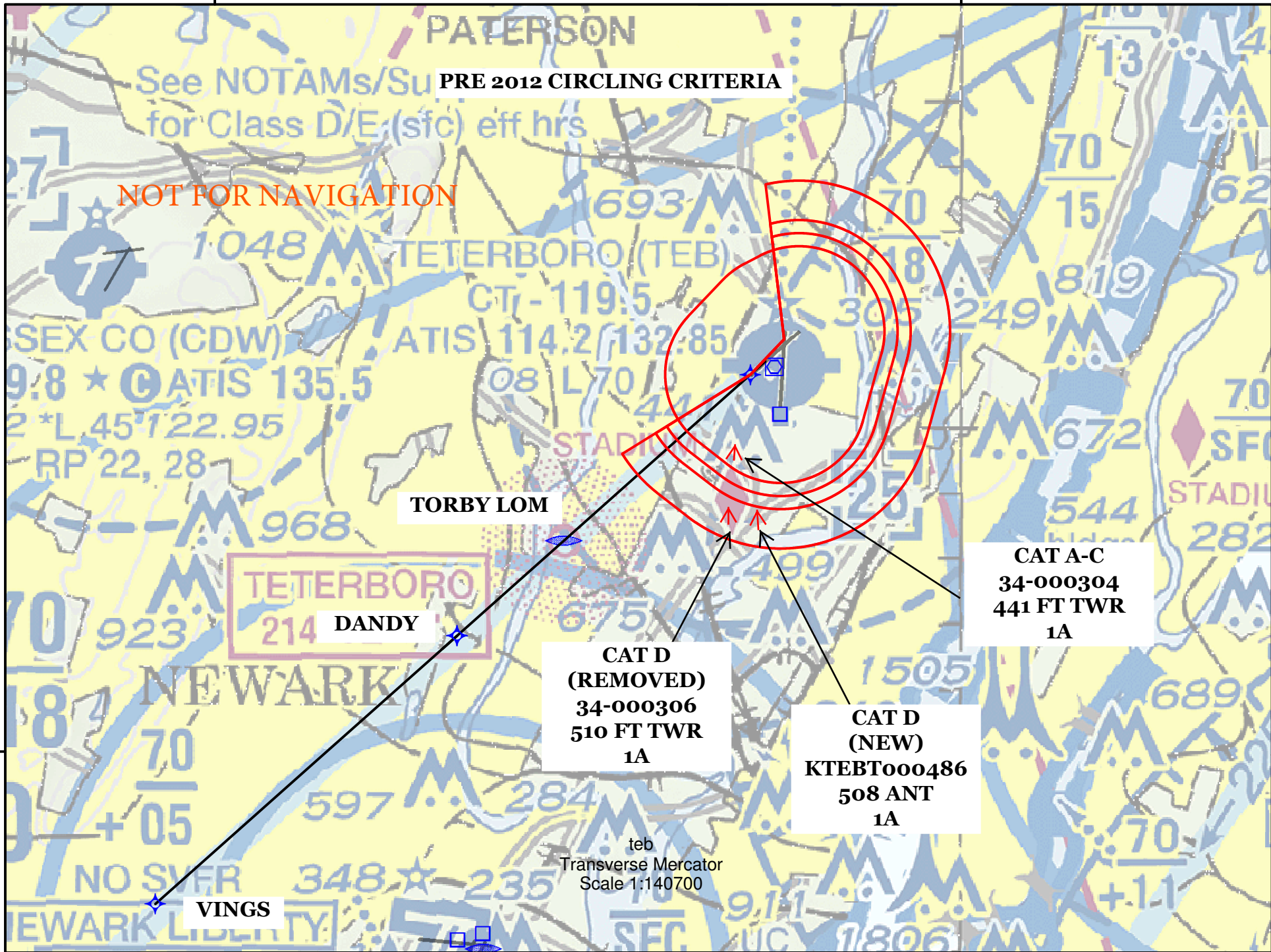
1 When Rwy 1 VGSI inop, circling Rwy 1 not authorized at night.  
2 Not authorized Northwest of Runways 6 and 19.

TERPS AMEND 29G 22 AUG 2013

**PRE 2012 CIRCLING CRITERIA**

NOT FOR NAVIGATION

See NOTAMs/Su  
for Class D/E (sfc) eff hrs



**TETERBORO**  
214 **DANDY**

**TORBY LOM**

**CAT D (REMOVED)**  
34-000306  
510 FT TWR  
1A

**CAT A-C**  
34-000304  
441 FT TWR  
1A

**CAT D (NEW)**  
KTEBT000486  
508 ANT  
1A

**VINGS**

teb  
Transverse Mercator  
Scale 1:140700

**CURRENT CIRCLING CRITERIA**

NOT FOR NAVIGATION

