

Docket No. SA-533

Exhibit No. 2-V

NATIONAL TRANSPORTATION SAFETY BOARD

WASHINGTON, D.C.

Airport and Approach Information (LBB)

(3 Pages)

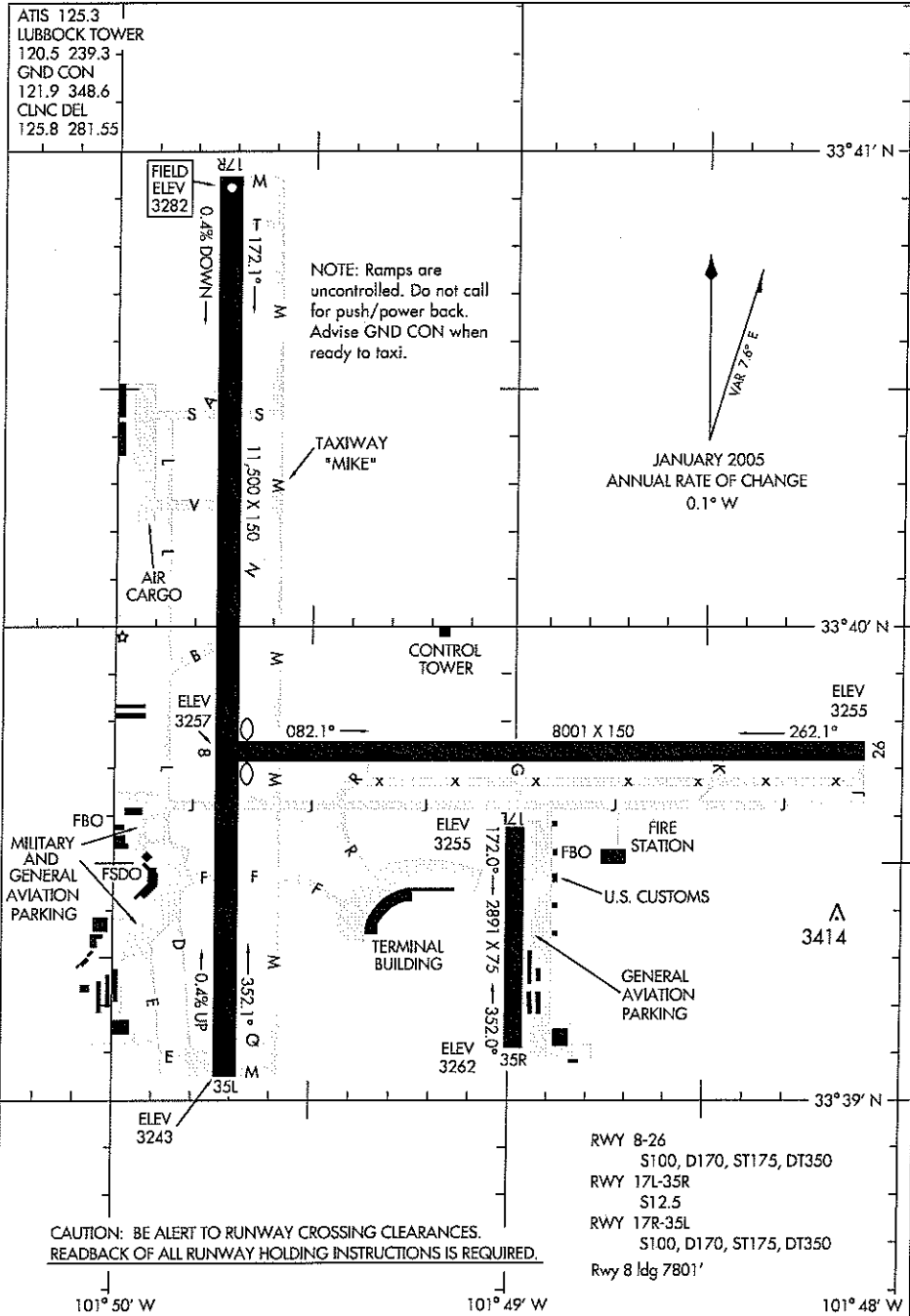
ATTACHMENT
21

08045

AIRPORT DIAGRAM

AL-241 (FAA)

LUBBOCK PRESTON SMITH INTL (LBB)
LUBBOCK, TEXAS



SC-2, 15 JAN 2009 to 12 FEB 2009

SC-2, 15 JAN 2009 to 12 FEB 2009

AIRPORT DIAGRAM

08045

LUBBOCK, TEXAS
LUBBOCK PRESTON SMITH INTL (LBB)

LUBBOCK, TEXAS

AL-241 (FAA)

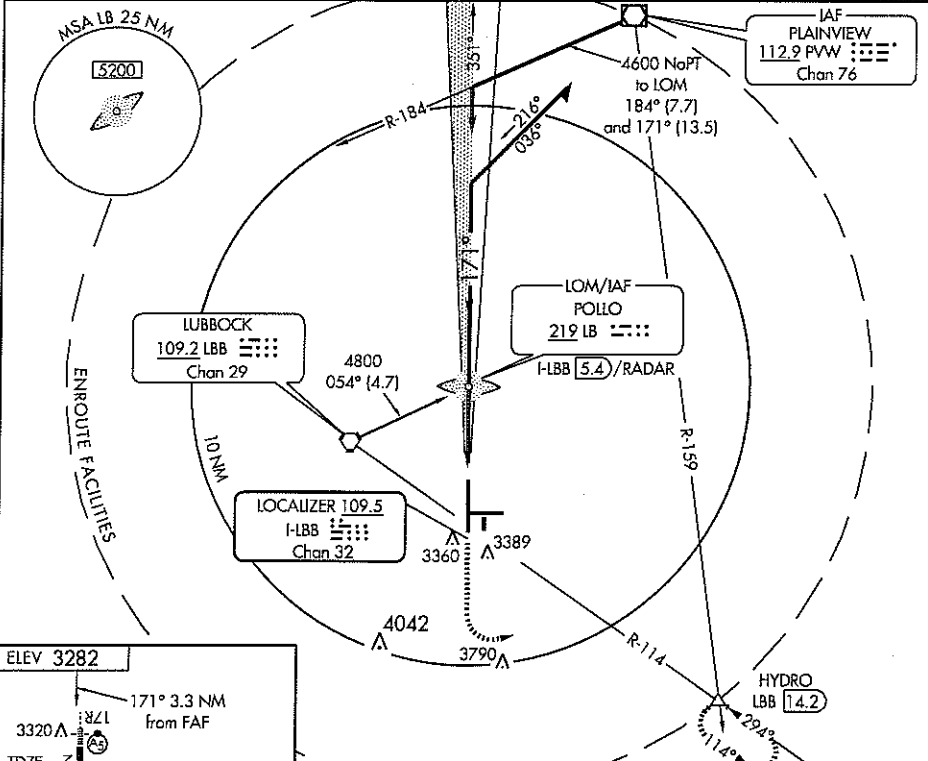
ILS or LOC RWY 17R
LUBBOCK PRESTON SMITH INTL (LBB)

LOC I-LBB 109.5 Chan 32	APP CRS 171°	Rwy Idg 11500 TDZE 3282 Apt Elev 3282
--------------------------------------	------------------------	---

ASR S-LOC 17R visibility increased to RVR 5000 Cat. D and RVR 6000 Cat. E. for inoperative MALSR.
* RVR 1800 authorized with the use of FD or AP or HUD to DA.

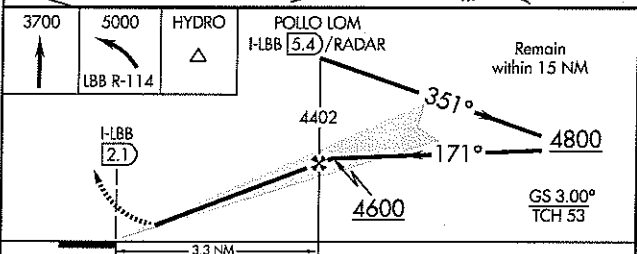
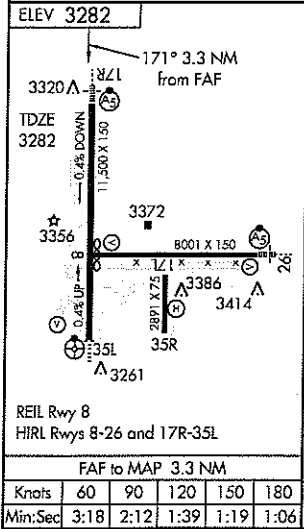
MALSR MISSED APPROACH: Climb to 3700, then climbing left turn to 5000 via LBB R-114 to HYDRO Int and hold.

ATIS 125.3	LUBBOCK APP CON 119.2 351.8	LUBBOCK TOWER 120.5 239.3	GND CON 121.9 348.6	CINC DEL 125.8 281.55
----------------------	---------------------------------------	-------------------------------------	-------------------------------	---------------------------------



SC-2, 15 JAN 2009 to 12 FEB 2009

SC-2, 15 JAN 2009 to 12 FEB 2009



CATEGORY	A	B	C	D	E
S-ILS 17R		*3482/24	200 (200-1/2)		
S-LOC 17R		3620/24	338 (400-1/2)	3620/40	338 (400-3/4)
CIRCLING	3720-1 438 (500-1)	3740-1 458 (500-1)	3740-1 1/2 458 (500-1 1/2)	3840-2 558 (600-2)	3980-2 1/2 698 (700-2 1/2)

LUBBOCK, TEXAS
Amdt 16B 08269

33°40'N-101°49'W

LUBBOCK PRESTON SMITH INTL (LBB)
ILS or LOC RWY 17R