

ATTACHMENT C

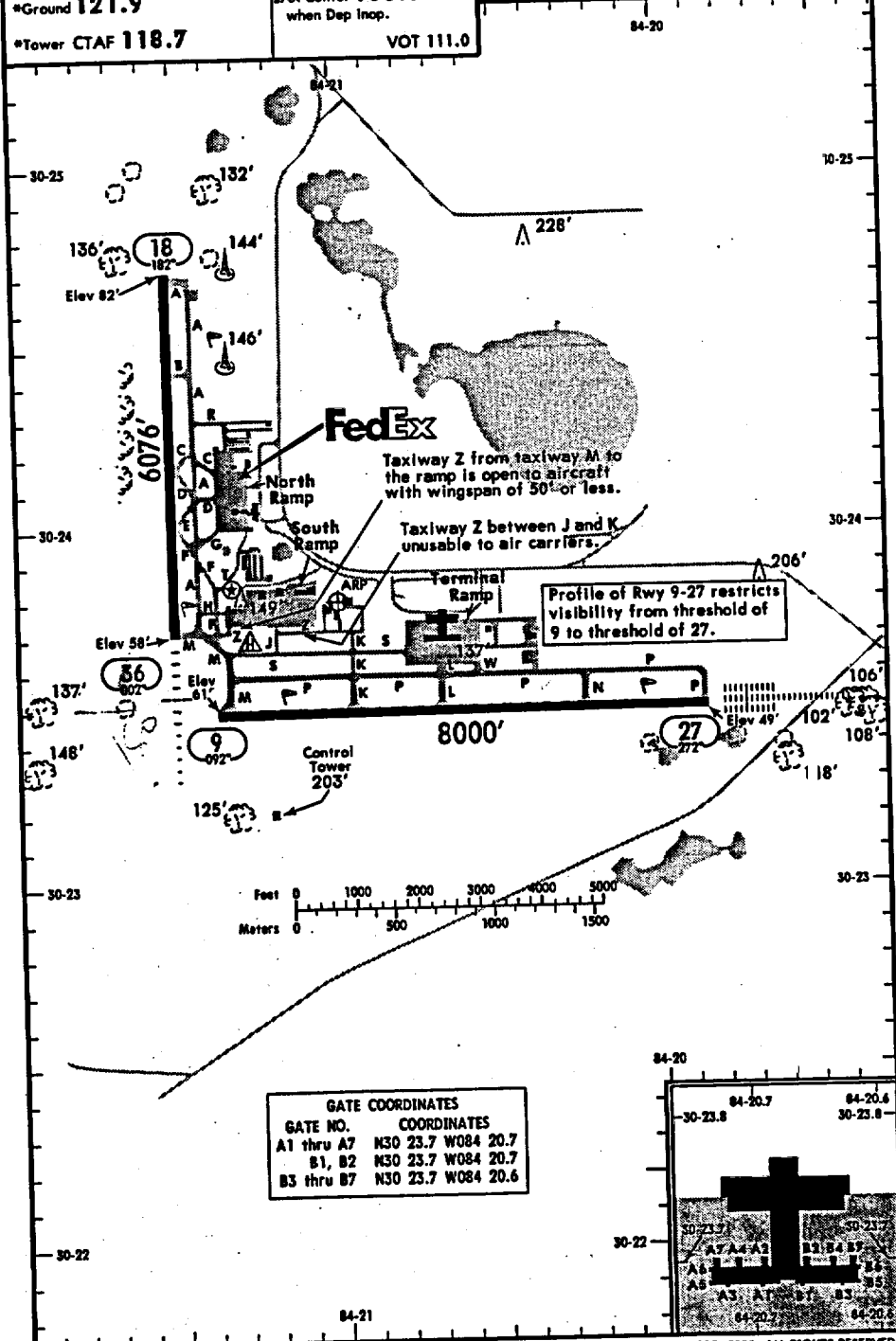
Airport Diagrams and Approach Charts

(6 pages)

ATIS 119.45
 *TALLAHASSEE Clearance 126.65
 *Ground 121.9
 *Tower CTAF 118.7

*TALLAHASSEE Departure (R)
 181°-360° 128.7
 001°-180° 135.8
 JAX Center 135.32
 when Dep Inop.
 VOT 111.0

KTLH TALLAHASSEE, FLA
 TALLAHASSEE REGL
 170.7°/9.6
 From SZW 117.5
 N30 23.8 W084 21.0
 Var 03°W Elev 81'



Profile of Rwy 9-27 restricts visibility from threshold of 9 to threshold of 27.

Taxiway Z from taxiway M to the ramp is open to aircraft with wingspan of 50' or less.

Taxiway Z between J and K unusable to air carriers.

GATE COORDINATES	
GATE NO.	COORDINATES
A1 thru A7	N30 23.7 W084 20.7
B1, B2	N30 23.7 W084 20.7
B3 thru B7	N30 23.7 W084 20.6

CHANGES: Stopways removed, Rwy lengths.

JEPPESEN

18 AUG 00 (10-9A)

AIRPORT

TALLAHASSEE, FLA
TALLAHASSEE REGI

GENERAL					
Birds in vicinity of airport.					
ADDITIONAL RUNWAY INFORMATION					
RWY			USABLE LENGTHS		TAKE-OFF WIDTH
			LANDING BEYOND	Threshold	
9	① HIRL ① CL ① REIL ① PAPI-L (angle 3.0°)	grooved RVR			150'
27	① HIRL ① CL ② ALSF-II ① TDZ ① PAPI-L (angle 3.0°)	grooved RVR	6950'		150'
18	① HIRL ① REIL ① PAPI-L (angle 3.0°)	grooved			150'
36	① HIRL ① SSALR ① PAPI-L	grooved RVR	5078'		150'
① Activate on 118.7 when Twr Incp. ② Preset on medium intensity only when Twr Incp.					
TAKE-OFF					
Rwys 9, 27			Rwys 18, 36		
	CL & RCLM	Adequate Vis Ref	STD	Adequate Vis Ref	STD
1 & 2 Eng	TDZ RVR 6	RVR 16 or 1/4	RVR 50 or 1	RVR 16 or 1/4	RVR 50 or 1
3 & 4 Eng	Rollout RVR 6		RVR 24 or 1/2		RVR 24 or 1/2
FOR FILING AS ALTERNATE					
Authorized Only When Twr Operating					
	ILS Rwy 36	ILS Rwy 27	LOC Rwy 36	LOC Rwy 27	Other
A	600-2	700-2	800-2	800-2	800-2
B					
C					
D		700-2 1/4		800-2 1/4	

CHANGES: Usable beyond glide slope lengths.

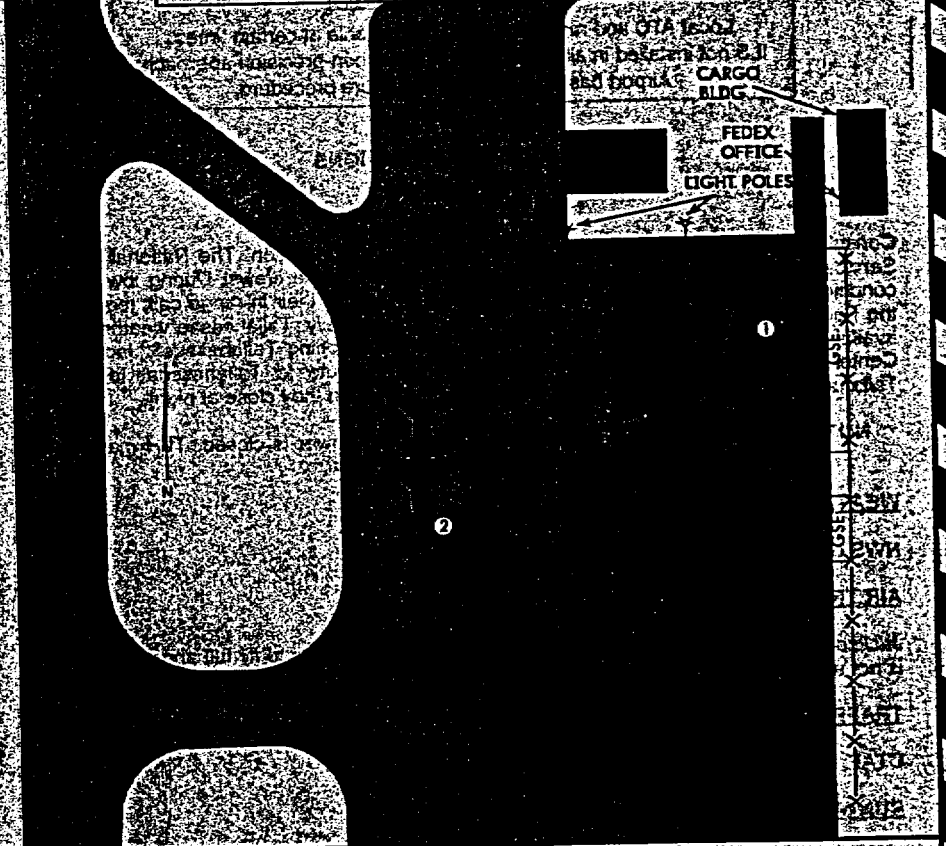
© JEPPESEN SANDERSON, INC., 1995, 2000. ALL RIGHTS RESERVED.

FedEx TLH
FEDEX: 131-925
UNICOM: 122-05

21 DEC 01 10:10

PARKING
TALLAHASSEE FRA
TALLAHASSEE REG
RAMP ELEV: 65 FT

CFIT RISK - MODERATE - SEE 10-10A



FEDEX PARK:

INBOUND:

1. CAUTION JET BLAST - Light aircraft parked south of ramp

2. Gate 1 - 727 power in via Taxiway D

3. Gate 2 - 727 power in via Taxiway C

Coordinates: N 30-24; W 084-21-33

OUTBOUND:

1. CAUTION JET BLAST - Light aircraft parked south of ramp

2. Gate 1 - 727 power out via Taxiway C

3. Gate 2 - 727 power out via Taxiway D

CONTINGENCY: As assigned by ramp

FEDEX OFFICE: 800-997-8547

FBO: Flightline: 850-574-4444; monitors UNICOM

SPECIAL PROCEDURES: Non-Tower Operations, see TLH 10-10A

REMARKS: 1. CAUTION - Light poles three feet from north edge of ramp. Taxi on guidelines provides at least 20 ft wingtip clearance from poles.
2. Consult Flight Plan/Release for Tower hours of operation.
3. Tallahassee Regional Airport is 4 NM S.W. of Tallahassee.

FedEX

21 DEC 01

10-10A

TALLAHASSEE, FLA
TALLAHASSEE REG

CFT RISK - MODERATE
Local ATC and radar coverage unavailable at certain times.
ILS not installed in all directions, potential non-precision approach.
Airport has no published departure procedure.

NON-TOWER OPERATIONS

GENERAL

Consult the Flight Plan/Release for TLH lower hours of operation. The National Weather Service has no means to communicate directly with airborne crews. During low weather conditions or rapidly changing weather, flight crews can, on their in-range call, request that the FedEx ramp agent relay the latest observation. Normally, Tallahassee weather will be available from Gainesville Radio (122.4) or 122.2 approaching Tallahassee, Jacksonville Center, ASOS, or ATIS (119.45), or GOC while enroute to Tallahassee. In general, Tallahassee Tower will leave ILS RWY 36 operational when they close at night.

NOTES: CAT II approach not authorized when the Tower is closed. TLH may not be used as an alternate when the Tower is closed.

WEATHER

NWS office located on the field.

AIR TRAFFIC CONTROL

Jacksonville Center unable to provide approach vectors. Expect to fly full approach if visual is not available.

TRAFFIC ADVISORIES

CTAF 118.7

RUNWAY LIGHTING

The approach lights for RWY 18/36 and 9/27 are pilot controlled on CTAF 118.7. See Jeppesen Introduction Tab - chart glossary - pilot controlled lighting.

EMERGENCY

Contact FedEx ramp on Company frequency with the nature of your problem, location, and intentions. They will notify emergency personnel. The FedEx ramp radio will be continuously manned from the in-range call until block-in and block-out until the off report is made.

CANCELLATION/CLEARANCE

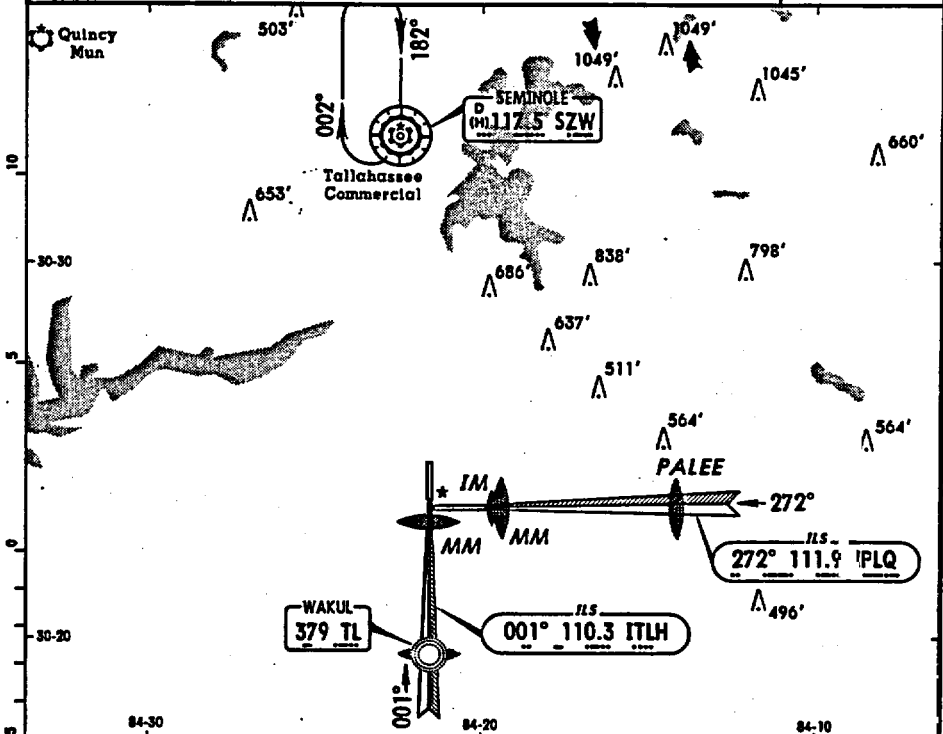
Flight plans can be closed out, and clearances requested from Jacksonville Center (135.32) or Gainesville FSS (122.4) while on the ground at Tallahassee during non-tower operations. (Attempt Jacksonville Center first.)

KTLH
TALLAHASSEE REGD

JEPPESEN
22 DEC 00 (18-1)

TALLAHASSEE, FLA
RADAR-1 ASR All Rws

ATIS 119.45	*TALLAHASSEE Approach (R) 135.8	JAX Center 135.32 when App Inop.	*TALLAHASSEE Tower CTAF 118.7	*Ground 21:9
RADAR	Final Apch Crs By ATC	Minimum Alt No FAF	MDA(H) Refer to Minimums	Apr Elev 82' TDZE-See Below
MISSED APCH: See Below Pilot controlled lighting 118.7.				No ASA published



MISSED APPROACH:
 Runway 9: Climbing LEFT turn to 2000' direct to SZW VOR and hold.
 Runways 18, 27: Climbing RIGHT turn to 2000' direct to SZW VOR and hold.
 Runway 36: Climb to 2000' direct to SZW VOR and hold.

RWY 9 TDZE 71'	RWY 18 TDZE 81'	RWY 27 TDZE 54'	RWY 36 TDZE 64'
-------------------	--------------------	--------------------	--------------------

ASR All Rws: MAP or Rwy Thr

Lighting -
Refer to
Airport
Chart

	STRAIGHT-IN LANDING				CIRCLE-TO-LAND	
	ASR 9 MDA(H) 500' (429')	ASR 18 MDA(H) 520' (439')	ASR 27 MDA(H) 500' (446')	ASR 36 MDA(H) 480' (416')	Max Kts	MDA(H)
A	RVR 50 or 1	1	RVR 24 or 1/2	RVR 50 or 1	90	600' (418') - 1
B	RVR 60 or 1/4	1/4	RVR 40 or 3/4	RVR 60 or 1/4	120	600' (418') - 1/2
C	1/2	1/2	RVR 50 or 1	1/2	140	640' (58') - 2
D					165	

CHANGES: ASR 36 visibilities.

© JEPPESEN SANDERSON, INC., 2000. ALL RIGHTS RESERVED.