



NATIONAL TRANSPORTATION SAFETY BOARD

Office of Aviation Safety
Washington, D.C. 20594

November 1, 2013

Attachment 9 - Charts

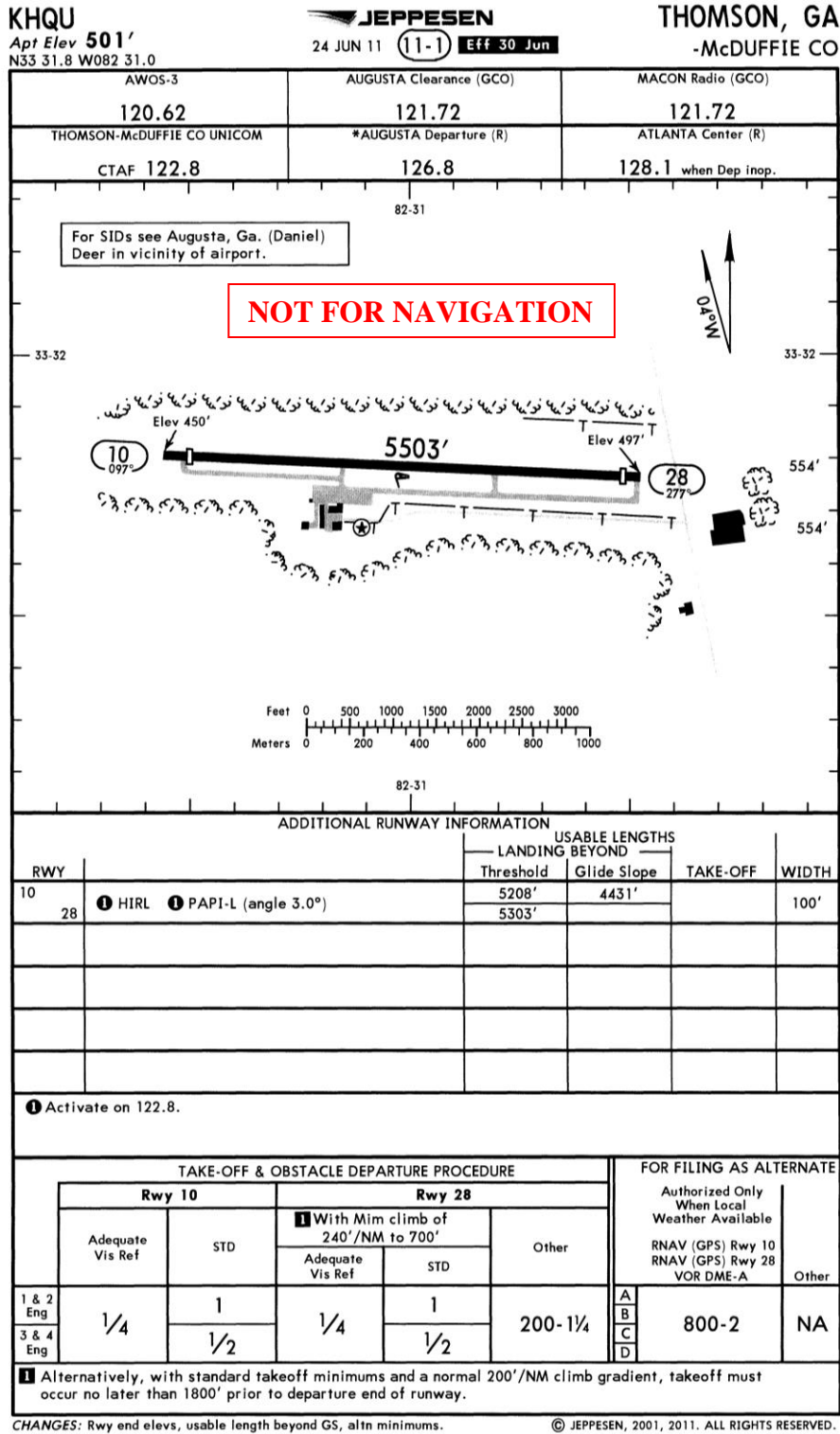
OPERATIONAL FACTORS

ERA13MA139

Table Of Contents

A. CHARTS.....	3
----------------	---

A. CHARTS



¹ Source: Jeppesen.

THOMASVILLE RGNL (TVI) 6 NE UTC-5(-4DT) N30°54.11' W83°52.87'

JACKSONVILLE

264 B S4 FUEL 100LL, JET A NOTAM FILE MCN

H-9B, 12F, L-21D, 22J

RWY 04-22: H5496X100 (ASPH) S-30 MIRL

IAP

RWY 04: PAPI(P2L)—GA 3.0° TCH 54'. Trees.

RWY 22: MALSF. REIL. PAPI(P2L)—GA 3.0° TCH 60'. Tree.

RWY 14-32: H5000X100 (ASPH) S-20 LIRL 0.3% up NW

RWY 14: Trees.

RWY 32: Trees.

AIRPORT REMARKS: Attended Mon-Fri 1100-0100Z†, Sat-Sun 1300-2300Z†. Twys on apron side of rwys lgt'd. MIRL Rwy 04-22 preset low ints, to increase ints and ACTIVATE MALSF—CTAF. ACTIVATE PAPI Rwy 04 and Rwy 22 during daylight hours—CTAF, after dusk PAPI Rwy 04 and Rwy 22 opr continuously.

WEATHER DATA SOURCES: AWOS-3 119.175 (229) 225-4336.**COMMUNICATIONS:** CTAF/UNICOM 123.075

RCO 122.55 (MACON RADIO)

Ⓡ VALDOSTA APP/DEP CON 132.375 (West of VAD R-360) 126.6 (East of VAD R-360-R-180) (Opr Mon-Thu 1200-0700Z†, Fri 1200-0300Z†, Sat, Sun and hol 1400-2200Z†) other times ctc

Ⓡ JAX CENTER APP/DEP CON 125.75

RADIO AIDS TO NAVIGATION: NOTAM FILE MCN.

MOULTRIE (L) VOR/DME 108.8 MGR Chan 25 N31°04.94'

W83°48.25' 202° 11.5 NM to fld. 290/2W.

VOR portion unusable:

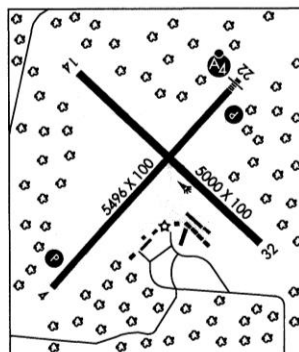
151°-226° blo 5,000'

280°-355°

PATTEN NDB (MHW) 245 GTP N30°57.45' W83°49.60' 222° 4.4 NM to fld. NDB unmonitored 0200-1100Z†

Mon-Fri; 0500-1700Z† Sat-Sun.

ILS/DME 110.1 I-TVI Chan 38 Rwy 22. Unmonitored 0200-1100Z† Mon-Fri; 0500-1700Z† Sat-Sun. Glideslope unusable blo 600'.

**THOMSON-MCDUFFIE CO (HQU) 4 N UTC-5(-4DT) N33°31.78' W82°31.02'**

ATLANTA

501 B S2 FUEL 100LL, JET A OX 1, 2, 3, 4 NOTAM FILE MCN

H-9B, 12G, L-24I

RWY 10-28: H5503X100 (ASPH) S-30, D-50, 2D-87 HIRL

IAP

0.9% up E

RWY 10: PAPI(P2L)—GA 3.0° TCH 48'. Thld dspcd 295'. Trees.

RWY 28: PAPI(P2L)—GA 3.5° TCH 50'. Thld dspcd 200'. Trees.

AIRPORT REMARKS: Attended 1300-2200Z†. Deer on rwy at ngt. ACTIVATE

HIRL Rwy 10-28, PAPI Rwy 10 and Rwy 28—CTAF.

WEATHER DATA SOURCES: AWOS-3 120.625 (706) 597-9801.**COMMUNICATIONS:** CTAF/UNICOM 122.8

Ⓡ AUGUSTA APP/DEP CON 126.8 (1145-0400Z†)

Ⓡ ATLANTA CENTER APP/DEP CON 128.1 (0400-1145Z†)

GCO 121.725 (FLIGHT SERVICES)

RADIO AIDS TO NAVIGATION: NOTAM FILE AND.

COLLIERS (H) VORTAC 113.9 IRQ Chan 86 N33°42.44'

W82°09.72' 243° 20.7 NM to fld. 420/4W.

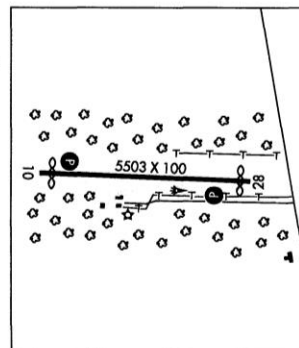
CEDAR NDB (MHW) 341 AA N33°32.00'

W82°36.86' 096° 4.9 NM to fld. NOTAM FILE MCN.

NDB unusable:

Byd 15 NM

ILS 110.75 I-AAQ Rwy 10. LOM CEDAR NDB.

**TIFT MYERS N31°25.72' W83°29.33' NOTAM FILE MCN.**

JACKSONVILLE

(T) VORW 112.5 IFM at Henry Tift Myers. 350/1W.

L-18I, 22J

VOR unusable:

301°-324°

RCO 122.35 (MACON RADIO)

NOT FOR NAVIGATION

SE, 7 MAR 2013 to 2 MAY 2013

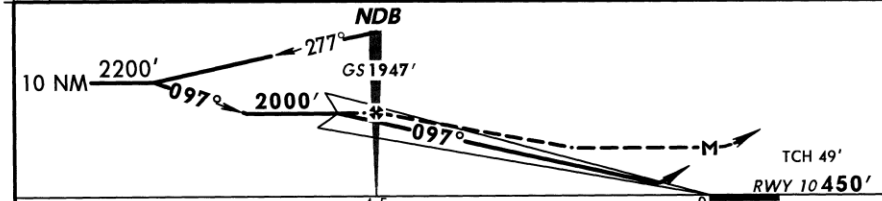
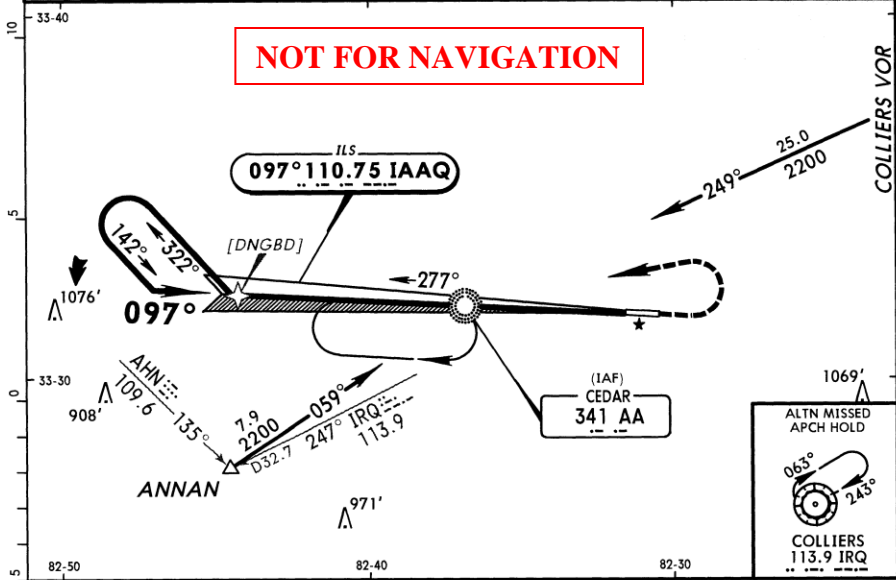
² Source: http://aeronav.faa.gov/afd.asp?cycle=afd_17OCT2013&eff=10-17-2013&end=12-12-2013#results.

KHQU
-McDUFFIE CO

JEPPESEN
24 JUN 11
Eff 30 Jun 11-1

THOMSON, GA
ILS or LOC NDB Rwy 10

AWOS-3 120.62		*AUGUSTA Approach (R) 126.8		ATLANTA Center (R) 128.1 when App inop.		THOMSON-McDUFFIE CO UNICOM CTAF 122.8
LOC IAAQ 110.75	Final Apch Crs 097°	GS NDB 1947' (1497')	ILS DA(H) (CONDITIONAL) 832' (382')	Apt Elev 501' Rwy 10 450'		
MISSED APCH: Climb to 1200' then climbing LEFT turn to 2400' direct AA NDB and hold, or as directed by ATC.						
Alt Set: INCHES Trans level: FL 180 Trans alt: 18000' 1. ADF required. 2. Use local altimeter setting; if not received, use Daniel altimeter setting. 3. When VGSI inop, Straight-in/Circling Rwy 10 procedure not authorized at night. 4. Visibility reduction by helicopters not authorized. 5. Pilot controlled lighting 122.8.						MSA AA NDB



Gnd speed-Kts	70	90	100	120	140	160	PAPI-L	1200'	2400'	AA	
GS	3:00"	372	478	531	637	743		849	↑	LT	341
NDB to MAP	4.5	3:51	3:00	2:42	2:15	1:56	1:41				

TERPS AMEND 1 30 JUN 2011	STRAIGHT-IN LANDING RWY 10				CIRCLE-TO-LAND			
	ILS		LOC (GS out)		With Local Altimeter Setting		With Daniel Altimeter Setting	
	DA(H) 832' (382')	DA(H) 899' (449')	MDA(H) 960' (510')	MDA(H) 1040' (590')				
	With Local Altimeter Setting		With Daniel Altimeter Setting					
	Max Kts	MDA(H)	MDA(H)	MDA(H)				
A	1/4	1/2	1	1	90	1020' (519')-1	1100' (599')-1	
B					120	1080' (579')-1	1160' (659')-1	
C			1 3/8	1 3/8	140	1080' (579')-1 1/2	1160' (659')-1 3/4	
D					165	1140' (639')-2	1220' (719')-2 1/4	

Not authorized to Rwy 10 at night when VGSI inop.
CHANGES: Procedure. © JEPPESEN, 2001, 2011. ALL RIGHTS RESERVED.

³ Source: Jeppesen.

THOMSON, GEORGIA

AL-6201 (FAA)

11293

LOC I-AAQ 110.75	APP CRS 097°	Rwy Idg THRE Apt Elev	5208 450 501
----------------------------	------------------------	-----------------------------	---

ILS or LOC/NDB RWY 10
THOMSON-McDUFFIE COUNTY (HQU)

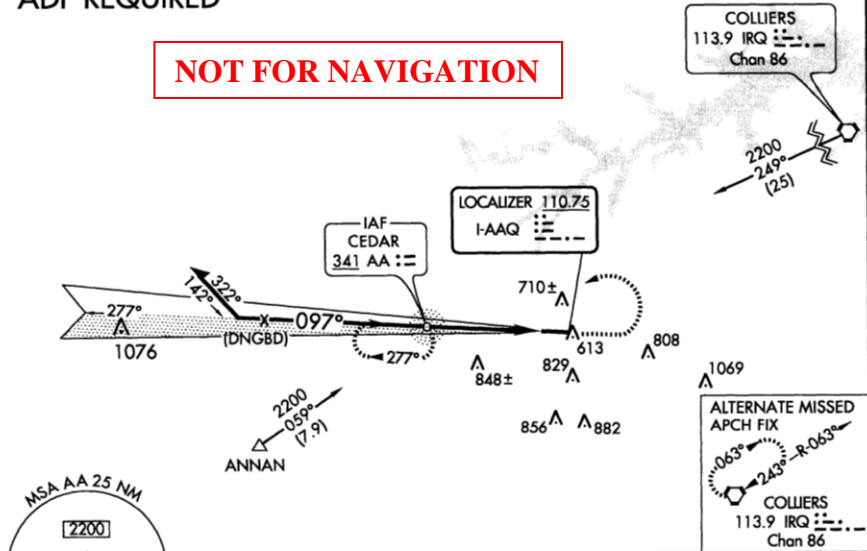
Visibility reduction by helicopters NA. When local altimeter setting not received, use Daniel Field altimeter setting: increase all DA 67 feet and all MDA 80 feet, increase visibility S-ILS 10 all Cats ¼ mile and S-LOC 10 and Circling Cats C/D ¼ mile. When VGSi inop, Straight-in/Circling Rwy 10 procedure NA at night.

MISSED APPROACH: Climb to 1200 then climbing left turn to 2400 direct AA NDB and hold.

AWOS-3 120.625	AUGUSTA APP CON * 126.8 270.3	UNICOM 122.8 (CTAF)	GCO 121.725
--------------------------	---	-------------------------------	-----------------------

ADF REQUIRED

NOT FOR NAVIGATION



SE-4, 30 MAY 2013 to 27 JUN 2013

SE-4, 30 MAY 2013 to 27 JUN 2013

ELEV 501	THRE 450			
CATEGORY	A	B	C	D
S-ILS 10	832-1¼ 382 (400-1¼)			
S-LOC 10	960-1 510 (500-1)	960-1¾ 510 (500-1¾)		
CIRCLING	1020-1 519 (600-1)	1080-1 579 (600-1)	1080-1½ 579 (600-1½)	1140-2 639 (700-2)
HIRL Rwy 10-28				
FAF to MAP 4.5 NM				
Knots	60	90	120	150 180
Min:Sec	4:30	3:00	2:15	1:48 1:30

THOMSON, GEORGIA
Amdt 1 30JUN11

33° 32'N-82° 31'W

THOMSON-McDUFFIE COUNTY (HQU)
ILS or LOC/NDB RWY 10

⁴ Source: <http://aeronav.faa.gov/d-tpp/1311/062011LN10.PDF>.

THOMSON, GEORGIA

AL-6201 (FAA)

13066

WAAS CH 58121 W28A	APP CRS 277°	Rwy Idg THRE 497 Apt Elev 501	5303
--------------------------	-----------------	-------------------------------------	------

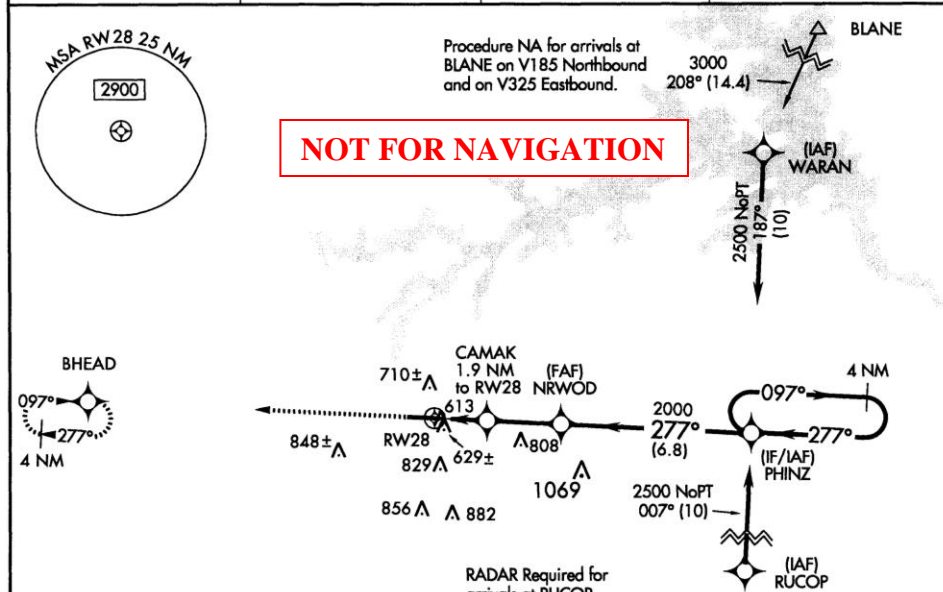
RNAV (GPS) RWY 28

THOMSON-McDUFFIE COUNTY (HQU)

Baro-VNAV NA when using Daniel Field altimeter setting. For uncompensated Baro-VNAV systems, LNAV/VNAV NA below -1.5°C (5°F) or above 40°C (104°F). DME/DME RNP-0.3 NA. Visibility reduction by helicopters NA. VDP NA with Daniel Field altimeter setting. When local altimeter setting not received, use Daniel Field altimeter setting and increase all DA 67 feet and all MDA 80 feet, and increase LPV and LNAV/VNAV all Cats visibility ¼ mile; increase LNAV and Circling Cats C and D ¼ mile.

MISSED APPROACH: Climb to 2500 direct BHEAD and hold.

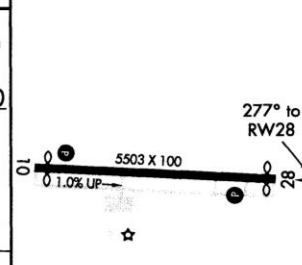
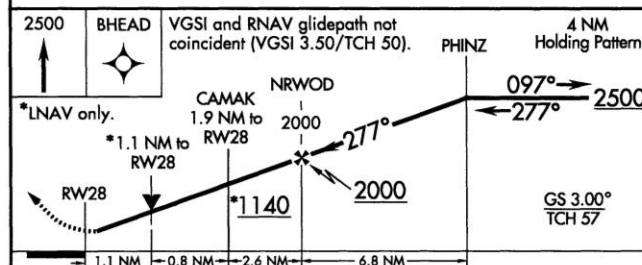
AWOS-3 120.625	AUGUSTA APP CON * 126.8 270.3	UNICOM 122.8 (CTAF) 0	GCO 121.725
-------------------	----------------------------------	--------------------------	----------------



SE-4, 30 MAY 2013 to 27 JUN 2013

SE-4, 30 MAY 2013 to 27 JUN 2013

ELEV 501	THRE 497
----------	----------



CATEGORY	A	B	C	D
LPV DA	787-7/8		290 (300-7/8)	
LNAV/VNAV DA	810-1		313 (400-1)	
LNAV MDA	880-1	383 (400-1)	880-1 1/8	383 (400-1 1/8)
CIRCLING	1020-1 519 (600-1)	1080-1 579 (600-1)	1080-1 1/2 579 (600-1 1/2)	1140-2 639 (700-2)

THOMSON, GEORGIA
Orig 30JUN11

33° 32'N-82° 31'W

THOMSON-McDUFFIE COUNTY (HQU)
RNAV (GPS) RWY 28

HIRL Rwy 10-28 0

⁵ Source: <http://aeronav.faa.gov/d-tpp/1311/06201R28.PDF>.