

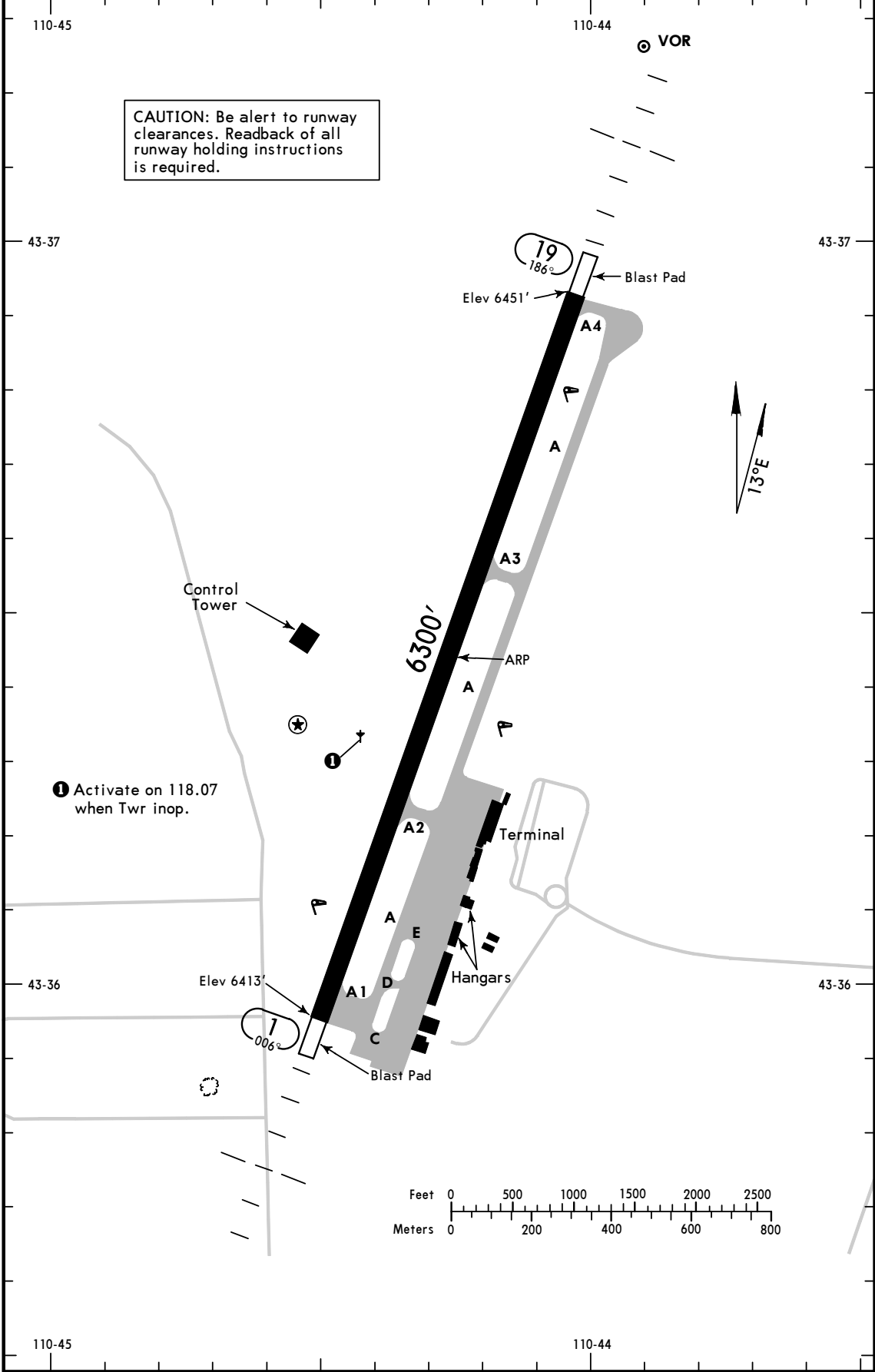
Attachment 8

To Operations/Human Performance Group Factual Report

DCA11IA015

JAC Airport Diagram and Runway 19 ILS Approach
Plate

ATIS (AWOS-3 when Twr inop.)	*JACKSON Ground	*Tower	UNICOM 122.95	SALT LAKE Center
120.62	124.55	CTAF 118.07		133.25



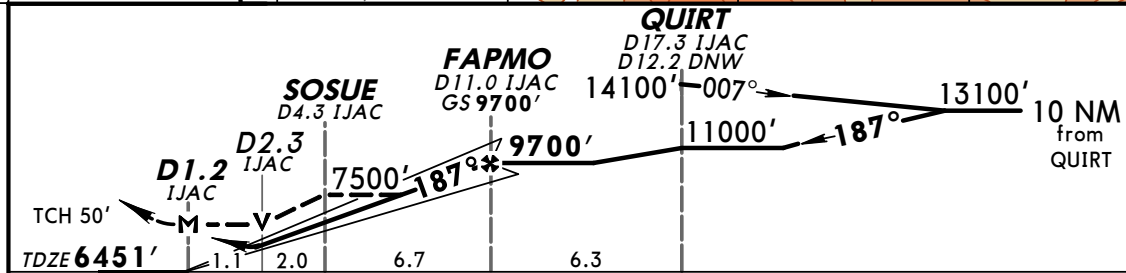
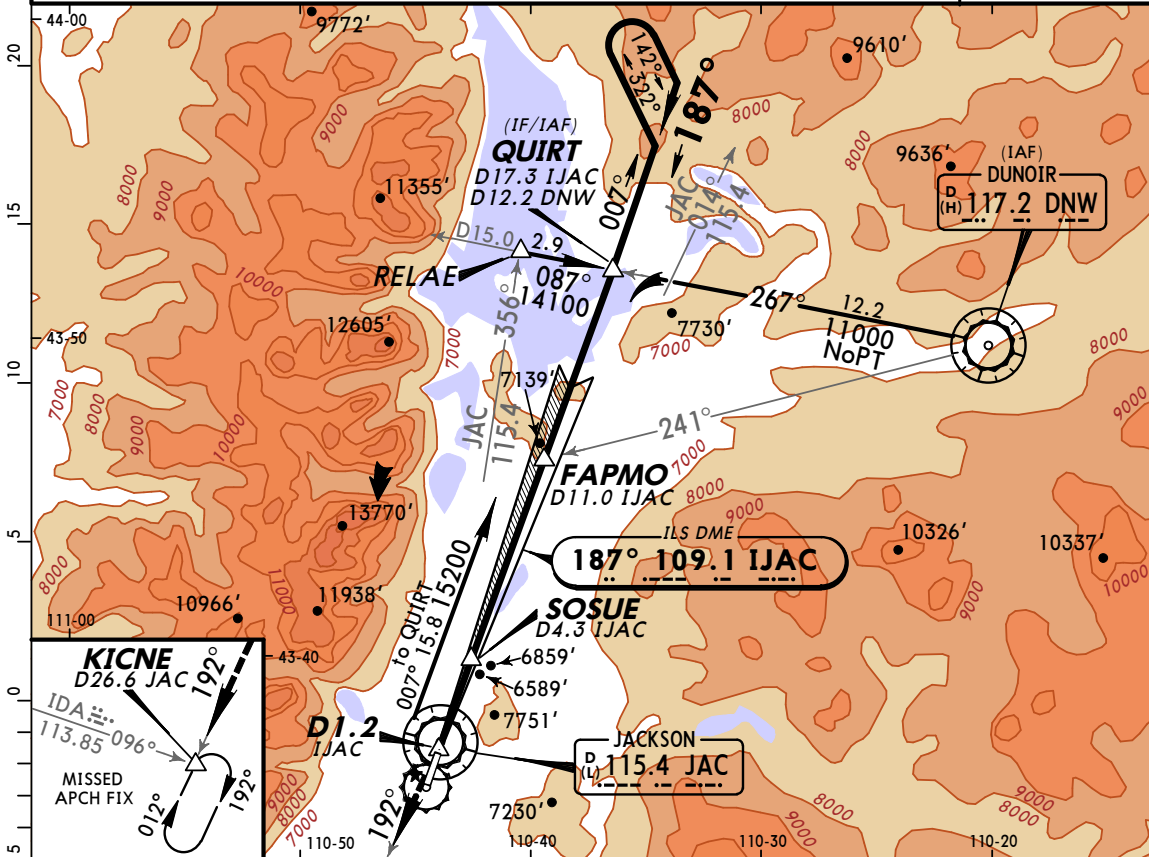
GENERAL						
Prior permission required for unscheduled air carrier operations with more than 30 passenger seats. Balloon operations in vicinity of airport West and Southwest May-Oct. Birds in vicinity of airport.						
ADDITIONAL RUNWAY INFORMATION						
RWY		USABLE LENGTHS		TAKE-OFF	WIDTH	
		Threshold	Landing Beyond Glide Slope			
1 19	① HIRL ① MALS PAPI-L (angle 3.0°) porous friction course overlay		5171'		150'	
① Activate on 118.07 when Twr inop.						
TAKE-OFF						
	Rwy 1			Rwy 19		
1 & 2 Eng	USE GEYSER DEPARTURE			USE TETON DEPARTURE		
3 & 4 Eng	USE GEYSER DEPARTURE			USE TETON DEPARTURE		
FOR FILING AS ALTERNATE						
	RNAV (RNP) Z Rwy 1 RNAV (RNP) Z Rwy 19	VOR DME Rwy 1	RNAV (RNP) Y Rwy 1	RNAV (GPS) X Rwy 1 RNAV (GPS) Y Rwy 19	VOR DME Rwy 19	Other
A	800-2	1000-2	1000-4	1200-2	1400-2	NA
B		1000-3		NA	1200-3	
C	NA		NA		1200-3	
D		NA		NA		

AMEND 6

KJAC/JAC
JACKSON HOLE

JACKSON, WYO
ILS or LOC Z Rwy 19

ATIS (AWOS-3 when Twr inop.) 120.62		SALT LAKE Center 133.25		*JACKSON Tower CTAF 118.07		*Ground 124.55	
LOC IJAC 109.1	Final Apch Crs 187°	GS FAPMO 9700' (3249')	ILS DA(H) 6651' (200')	Apt Elev 6451' TDZE 6451'			
MISSED APCH: Climb to 14000' outbound via JAC VOR R-192 to KICNE INT/D26.6 JAC VOR and hold, continue climb-in-hold to 14000'. Missed approach obstructions require a minimum climb gradient of 245'/NM to 11200'; if unable to meet rate of climb, see ILS or LOC Y Rwy 19 (chart 11-1).							
Alt Set: INCHES Trans level: FL 180 Trans alt: 18000' 1. Use IJAC DME when on LOC course. 2. Pilot controlled lighting 118.07.							



Gnd speed-Kts	70	90	100	120	140	160	MALS 14000' JAC PAPI 115.4 R-192	
GS	3.00°	377	484	538	646	753		861
MAP at D1.2 IJAC or FAPMO to MAP	9.8	8:24	6:32	5:53	4:54	4:12		3:41

TERPS	STRAIGHT-IN LANDING RWY19				CIRCLE-TO-LAND		
	ILS		LOC (GS out)		Not Authorized East of Rwy 1-19		
	DA(H) 6651' (200')		MDA(H) 6840' (389')		With SOSUE		
	FULL		ALS out		Without SOSUE		
A					Max Kts 90	6840' (389')-1	7500' (1049')-1 1/4
B					120	6920' (469')-1	7500' (1049')-1 1/2
C	3/4				140	6920' (469')-1 1/2	7500' (1049')-3
D			1 1/4		165	7080' (629')-2	