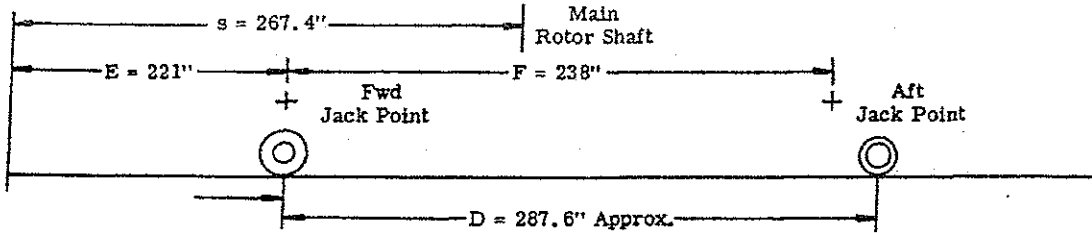


AIRCRAFT ACTUAL WEIGHT AND HORIZONTAL BALANCE  
FOR S-61N MODEL HELICOPTER

Prepared By David Wolf  
Date 1-4-08

Reg. No. N612AZ Serial No. 61297

SCALE POSITION	SCALE NO.	SCALE READING (LB)	TARE	SCALE ERROR	SYMBOL	NET WEIGHT
LEFT MAIN POINT		5015			W <sub>L</sub>	5015
RIGHT MAIN POINT		5132			W <sub>R</sub>	5132
POINT TAIL		2181			W <sub>T</sub>	2181
TOTAL WEIGHT		12328			W	12328



CENTER OF GRAVITY TO FORWARD DATUM (HORIZ. DIST. - AS WEIGHED)

Weighing on Wheels  $E + \frac{W_T \times D}{W}$

Weighing on Jack Points  $E + \frac{W_T \times F}{W} = 221 + \frac{2181 \times 238}{12328} = 263.1$

CORRECTED WEIGHT AND HORIZONTAL BALANCE

ITEMS ADDED & SUBTRACTED	WEIGHT (LB)	HORIZONTAL DIST (in) C.G. TO FWD DATUM	MOMENT (lb in.)
Aircraft as Weighed	12328	263.1	3243496.8
Plus -			
Minus -			
TOTAL <del>EMPTY</del> <del>GROSS</del> WEIGHT	12328	263.1	3243496.8
BALANCE 263.1 Horizontal Dist. - s = 4.3 in. <del>Aft</del> Fwd of Main Rotor Centroid (Corrected)			

S 5654 (R2)

Witnessed By Rodney Mahogue

Figure 4-10

September 9, 1963  
Reissued December 17, 1971