

## **Attachment # 2**

### **Newark International Airport Diagram & Approach Plate 22R**



JEPPESEN

27 JUN 97 (10-9A)

AIRPORT

**NEWARK, NJ**  
NEWARK INTL

<u>GENERAL</u>							
Low-level wind shear alert system. Birds in vicinity of airport.							
ADDITIONAL RUNWAY INFORMATION							
RWY				USABLE LENGTHS			WIDTH
				Threshold	Glide Slope	Threshold to Intersecting Runway	
4R 22L	HIRL CL ALSF-II TDZ	grooved	RVR	8110' 2472m	7050' 2149m		150' 46m
	HIRL CL MALSR LDIN TDZ	grooved	RVR	8210' 2502m	7395' 2264m		
4L 22R	HIRL CL MALSR TDZ	grooved	RVR	7460' 2274m	6400' 1951m		150' 46m
	HIRL CL REIL VASI (3 bar)-L	grooved	RVR	7760' 2365m	6860' 2091m		
11 29	HIRL CL REIL VASI-L (angle 3.08°)	grooved			5616' 1712m	4L/22R 4550'	150' 46m
	HIRL CL REIL VASI (3 bar)-L	grooved		6502' 1982m			
TAKE-OFF							
Rwys 4L, 4R, 22L, 22R			Rwy 11		Rwy 29		
CL & RCLM any RVR out, other two req.	Adequate Via Ref	STD	NOTE: 215' mobil crane 1150' from departure end of runway, 100' right of centerline.		With min climb of 350'/NM to 500'	Other	
					Adequate Via Ref	STD	
1 & 2 Eng	TDZ RVR 6	RVR 16 or 1/4	300-1		1/4	RVR 50 or 1	400-1
3 & 4 Eng	Mid RVR 6					RVR 24 or 1/2	
	Rollout RVR 6				1/2		
IFR DEPARTURE PROCEDURE							
All IFR departures must comply with Newark Intl SIDs.							
FOR FILING AS ALTERNATE							
ILS Rwy 4L ILS Rwy 4R ILS Rwy 11 ILS Rwy 22L	LOC Rwy 4L LOC Rwy 4R LOC Rwy 11 LOC Rwy 22L	MDB Rwy 4R MDB Rwy 4L	VOR DME Rwy 22L/R	VOR Rwy 11	ILS Rwy 22R LOC Rwy 22R COPTER ILS DME Rwy 4L COPTER ILS DME Rwy 22L		
A	700-2	800-2	800-2	900-2	1200-3	NA	
B				1000-3			
C							
D	900-3	900-3	1000-3				

CHANGES: See other side.

AMEND 2

JEPPESEN

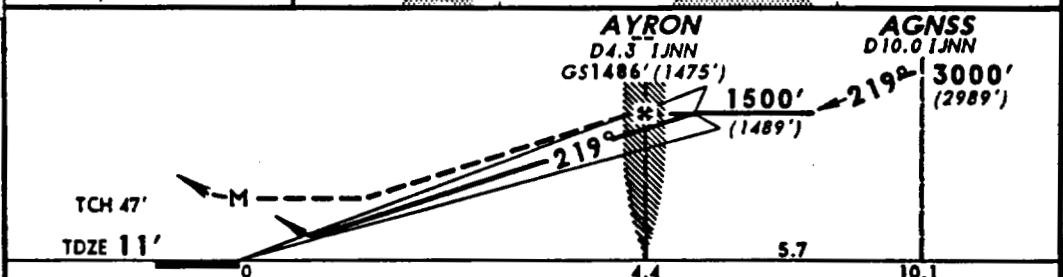
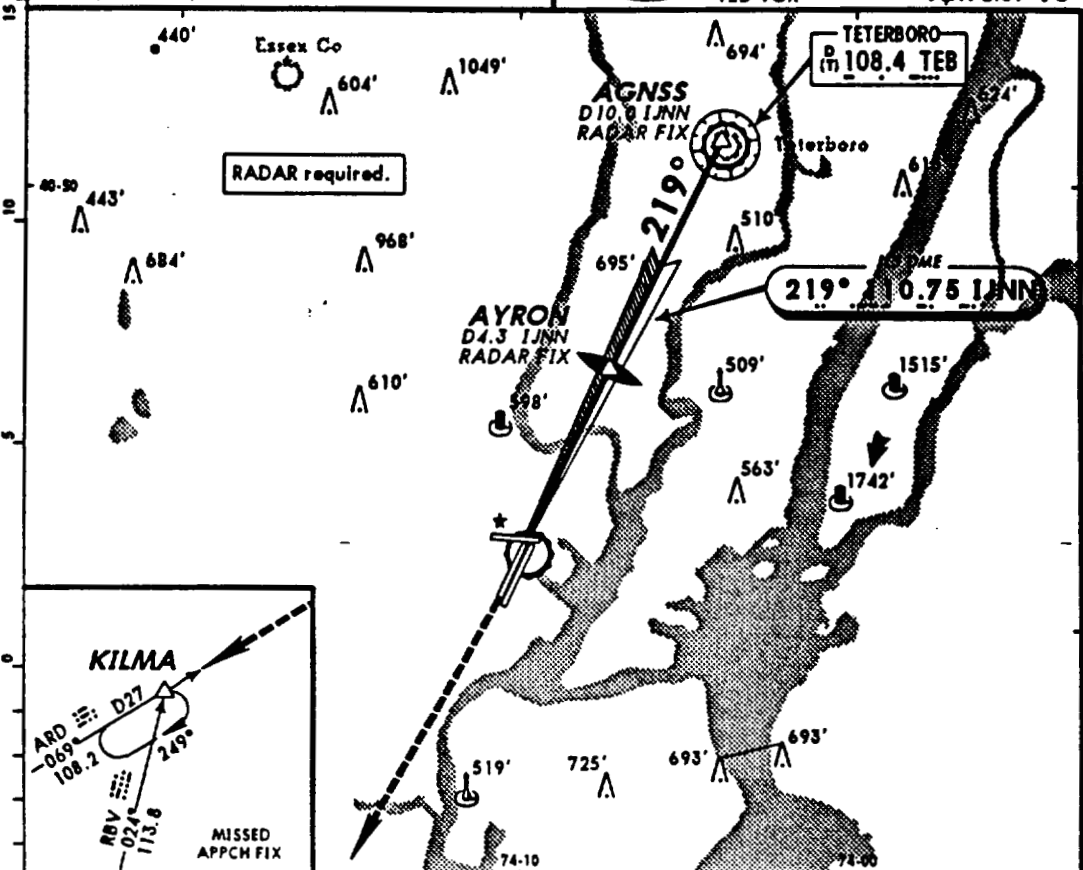
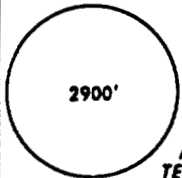
8 AUG 97

11-4

Eff 14 Aug

NEWARK, NJ  
 NEWARK INTL  
 ILS Rwy 22R  
 LOC 110.75 IJNN  
 Apt. Elev 18'

ATIS Arrival 115.7 South Arrival 134.82  
 NEW YORK Approach (R) 128.55  
 NEWARK Tower 118.3  
 Ground 121.8  
 Helicopter & Seaplane 127.85



MISSED APPROACH: Climb to 2000' then climbing RIGHT turn to 3000' via ARD R-069 to KILMA INT/ARD 27 DME and hold.

STRAIGHT-IN LANDING RWY 22R		CIRCLE-TO-LAND	
ILS	LOC (GS out)	Max Kts	MDA(M)
DA(M) 211' (200')	MDA(M) 520' (509')	90	660' (642')-1
RVR 40 or 1/4	RVR 50 or 1	120	660' (642')-1 1/4
		140	660' (642')-1 3/4
	1 1/2	165	900' (882')-3
Gnd speed-Kts	70 90 100 120 140 160		
GS	3.00° 377 484 538 646 753 861		
AYRON to MAP	4.4 3:46 2:56 2:38 2:12 1:53 1:39		