

AIRCRAFT ACTUAL WEIGHT AND HORIZONTAL BALANCE
FOR S-61N MODEL HELICOPTER

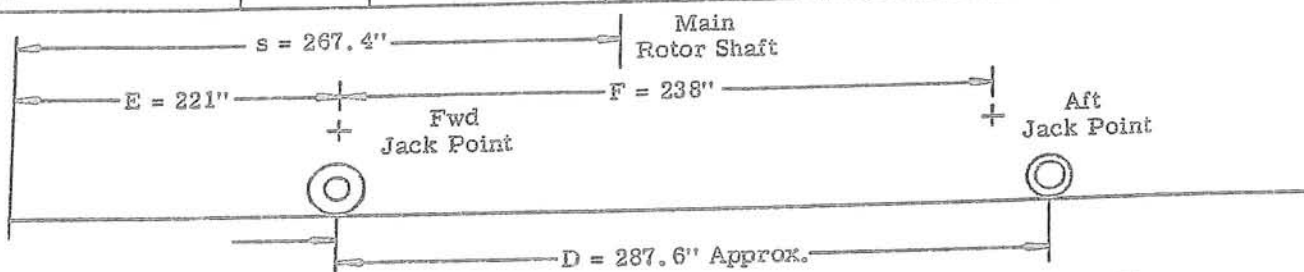
Prepared By Jeffery R Hill

Date 8-11-07

Reg. No. N612AZ

Serial No. 61297

| SCALE POSITION | SCALE NO. | SCALE READING (LB) | TARE | SCALE ERROR | SYMBOL | NET WEIGHT |
|------------------|-----------|--------------------|------|-------------|----------------|------------|
| LEFT MAIN POINT | | 4712 | | | W _L | 4712 |
| RIGHT MAIN POINT | | 4774 | | | W _R | 4774 |
| POINT TAIL | | 1990 | | | W _T | 1990 |
| TOTAL WEIGHT | | 11476 | | | W | 11476 |



CENTER OF GRAVITY TO FORWARD DATUM (HORIZ. DIST. - AS WEIGHED)

Weighing on Wheels

$$E + \frac{W_T \times D}{W}$$

Weighing on Jack Points

$$E + \frac{W_T \times F}{W} \quad 221 + \frac{1990 \times 238}{11476} = 262.3$$

CORRECTED WEIGHT AND HORIZONTAL BALANCE

| ITEMS ADDED & SUBTRACTED | WEIGHT (LB) | HORIZONTAL DIST (in) C.G. TO FWD DATUM | MOMENT (lb in.) |
|--|-------------|--|-----------------|
| Aircraft as Weighed | 11476 | 262.3 | 3010154.8 |
| Plus - | | | |
| Minus - | | | |
| TOTAL XXXX ^{EMPTY} GROSS WEIGHT | 11476 | 262.3 | 3010154.8 |
| BALANCE 262.3 Horizontal Dist. - s = 5.1 in. ^{Fwd} XXX of Main Rotor Centroid (Corrected) | | | |

S 5654 (R2)

Witnessed By _____

Figure 4-10

September 9, 1963

**AIRCRAFT ACTUAL WEIGHT AND HORIZONTAL BALANCE, CHART B
S-61N MODEL HELICOPTER (Form 80-287)**

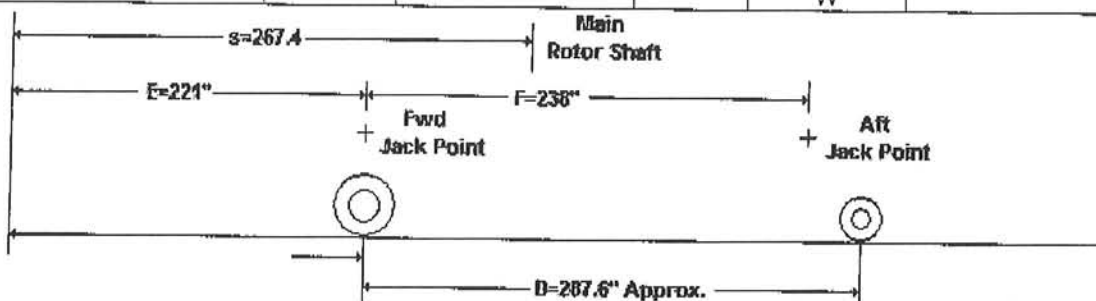
Prepared By: Levi Phillips

Date: 1/4/2008

Reg. No. N612AZ

Serial No. 61297

| 0 | SCALE No. | SCALE READING (lbs) | TARE | SYMBOL | NET WEIGHT |
|------------------|-----------|---------------------|------|--------|------------|
| LEFT MAIN POINT | 1 | 5087.2 | 0 | Wl | 5087.2 |
| RIGHT MAIN POINT | 2 | 5167.2 | 0 | Wr | 5167.2 |
| NOSE/TAIL POINT | 3 | 1758.5 | 0 | Wt | 1758.5 |
| TOTAL WEIGHT | | 12013 | 0 | W | 12013 |



CENTER OF GRAVITY TO FORWARD DATUM (HORIZ. DIST. - AS WEIGHED)

Weighing on Wheels

$$E + \frac{W_t \times D}{W}$$

$$221 + \frac{1758.5 \times 287.6}{12013} = 263.1$$

Weighing on Jack Points

$$E + \frac{W_t \times F}{W}$$

CORRECTED WEIGHT AND HORIZONTAL BALANCE

| ITEMS ADDED & SUBTRACTED | WEIGHT (lbs) | HORIZONTAL DIST (in) C.G. TO FWD DATUM | MOMENT (lb. in.) |
|--|--------------|--|------------------|
| Aircraft as Weighed | 12013 | 263.1 | 3160620.3 |
| Plus - | | | |
| Minus - | | | |
| TOTAL EMPTY/GROSS WEIGHT | 12013 | 263.1 | 3160620.3 |
| BALANCE Horizontal Dist. - s = in. Fwd/Aft of Main Rotor Centroid (corrected) | | | |

Form # 80-287

Witnessed By: _____

Part 2, Section IV
Loading InformationSIKORSKY AIRCRAFT
S-61N FLIGHT MANUAL

| CHART A - EMPTY WEIGHT CHECK LIST | | | | | | | | | | | | |
|---|--|--------|-----|------------|--------------------|---|---|---|---|---|---|---|
| AIRCRAFT MODEL S-61N SERIAL NO. 61297 ENTER DATE 8-11-67 1-4-68 | | | | | | | | | | | | |
| ITEM NUMBER | ITEMS AND LOCATION GROUPED BY COMPARTMENT | WEIGHT | ARM | MOMENT/100 | DELIVERY EQUIPMENT | CHECK | CHECK | CHECK | CHECK | CHECK | CHECK | CHECK |
| | | | | | | 1 IN AIRCRAFT CHART C ENTRY | 2 IN AIRCRAFT CHART C ENTRY | 3 IN AIRCRAFT CHART C ENTRY | 4 IN AIRCRAFT CHART C ENTRY | 5 IN AIRCRAFT CHART C ENTRY | 6 IN AIRCRAFT CHART C ENTRY | 7 IN AIRCRAFT CHART C ENTRY |
| A | COCKPIT COMPARTMENT (32-110) | | | | | | | | | | | |
| A-1 | AUTOTRANSFORMERS 906-1A (2) (WINDSHIELD DE-ICING) | 9 | 42 | 3.8 | | ✓ | ✓ | | | | | |
| * A-2 | BATTERY, Lead acid | 80 | 45 | 36. | | ✓ | ✓ | | | | | |
| A-3 | CONTROLLER 860-1 (WINDSHIELD DE-ICING) | 9 | 51 | 4.6 | | ✓ | ✓ | | | | | |
| * A-4 | WINDSHIELD WIPER INSTL. (S6120-71117) | 11 | 52 | 5.7 | | ✓ | ✓ | | | | | |
| * A-5 | AIRSPD IND. (12960U-4-0194) (2) | 2 | 61 | 1.2 | | ✓ | ✓ | | | | | |
| * A-6 | ALTIMETER (D22061-10-012) (2) | 3 | 61 | 1.8 | | ✓ | ✓ | | | | | |
| * A-7 | GAS. GEN. TACH. (8DJ01) (2) | 3 | 61 | 1.8 | | ✓ | ✓ | | | | | |
| * A-8 | VERT. GYRO - COMPASS IND. (4005-A LEAR) (2) | 9 | 62 | 5.6 | | ✓ | ✓ | | | | | |
| * A-9 | MISCELLANEOUS INSTRUMENTS: | 12 | 62 | 7.4 | | ✓ | ✓ | | | | | |
| | HYDRAULIC PRESS IND. (SR-152A TYPE 3) (2) | | | | | ✓ | ✓ | | | | | |
| | XMSN OIL TEMP. IND. (163B2) | | | | | ✓ | ✓ | | | | | |
| | XMSN OIL PRESS. IND. (SR-152A TYPE 3) | | | | | ✓ | ✓ | | | | | |
| | ENGINE OIL PRESS. IND. (SR-151A TYPE 2) (2) | | | | | ✓ | ✓ | | | | | |
| | ENGINE OIL TEMP. IND. (163B2) (2) | | | | | ✓ | ✓ | | | | | |
| | FUEL PRESS. IND. (SR-151A TYPE 2) (2) | | | | | ✓ | ✓ | | | | | |

*MANDATORY FLIGHT EQUIPMENT

SIKORSKY AIRCRAFT
S-61N FLIGHT MANUALPart 2, Section IV
Loading Information

| CHART A - EMPTY WEIGHT CHECK LIST | | | | | | | | | | | | |
|---|--|--------|-----|------------|--------------------|---|---|---|---|---|---|---|
| AIRCRAFT MODEL S-61N SERIAL NO. <i>61397</i> ENTER DATE <i>8-1-07</i> <i>1-4-08</i> | | | | | | | | | | | | |
| ITEM NUMBER | ITEMS AND LOCATION GROUPED BY COMPARTMENT | WEIGHT | ARM | MOMENT/100 | DELIVERY EQUIPMENT | CHECK | CHECK | CHECK | CHECK | CHECK | CHECK | CHECK |
| | | | | | | 1 IN AIRCRAFT CHART C ENTRY | 2 IN AIRCRAFT CHART C ENTRY | 3 IN AIRCRAFT CHART C ENTRY | 4 IN AIRCRAFT CHART C ENTRY | 5 IN AIRCRAFT CHART C ENTRY | 6 IN AIRCRAFT CHART C ENTRY | 7 IN AIRCRAFT CHART C ENTRY |
| A | COCKPIT COMPARTMENT (32-110) (CONTINUED) | | | | | | | | | | | |
| A-9 | POWER TURB. INLET TEMP. IND. H2900K416B (2) POWER TURB. INLET TEMP. IND. | | | | | ✓ | ✓ | | | | | |
| * | FUEL QUANTITY IND. (393004-01-884) (2) | | | | | ✓ | ✓ | | | | | |
| * | A.C. VOLTAMMETER (570-382) | | | | | ✓ | ✓ | | | | | |
| * | D.C. VOLTAMMETER (NAF 1225-300) | | | | | ✓ | ✓ | | | | | |
| * | STANDBY COMPASS (CB2100T4) ALTERNATE STANDBY COMPASS (AN5766T4) | | | | | ✓ | ✓ | | | | | |
| * | A-10 TORQUEMETER (6300-C38A-155-31) (2) | 3 | 63 | 1.9 | | ✓ | ✓ | | | | | |
| * | A-11 TRIPLE TACHOMETER (B31521-10-008) (2) | 6 | 64 | 3.8 | | ✓ | ✓ | | | | | |
| * | A-12 INSTANTANEOUS VERTICAL SPEED IND. (D3WBSL-9066) (2) | 3 | 64 | 1.9 | | ✓ | ✓ | | | | | |
| * | A-13 TURN & SLIP IND. (A1400) (2) | 3 | 64 | 1.9 | | ✓ | ✓ | | | | | |
| * | A-14 CLOCK (A-13A) (2) | 1 | 64 | 0.6 | | ✓ | ✓ | | | | | |
| | A-15 CUSHIONS, SEAT, PILOT & CO-PILOT (2) | 6 | 92 | 5.5 | | ✓ | ✓ | | | | | |
| * | A-16 SAFETY BELT (H101155-0) (2) | 4 | 97 | 3.9 | | ✓ | ✓ | | | | | |
| * | A-17 SEATS, PILOT & CO-PILOT (677R20000) | 1 | 99 | 43.6 | | ✓ | ✓ | | | | | |

Part 2, Section IV
Loading InformationSIKORSKY AIRCRAFT
S-61N FLIGHT MANUAL

| CHART A - EMPTY WEIGHT CHECK LIST | | | | | | | | | | | | | |
|--|--|-----------|-----|------------|--------------------|-----------------------------------|-----------------------------------|-----------------------------------|-----------------------------------|-----------------------------------|-----------------------------------|-----------------------------------|-----------------------------------|
| AIRCRAFT MODEL S-61N SERIAL NO. 61297 ENTER DATE 8-1-07 1-4-08 | | | | | | | | | | | | | |
| ITEM NUMBER | ITEMS AND LOCATION GROUPED BY COMPARTMENT | WEIGHT | ARM | MOMENT/100 | DELIVERY EQUIPMENT | CHECK | CHECK | CHECK | CHECK | CHECK | CHECK | CHECK | CHECK |
| | | | | | | 1 AIRCRAFT CHART C ENTRY | 2 AIRCRAFT CHART C ENTRY | 3 AIRCRAFT CHART C ENTRY | 4 AIRCRAFT CHART C ENTRY | 5 AIRCRAFT CHART C ENTRY | 6 AIRCRAFT CHART C ENTRY | 7 AIRCRAFT CHART C ENTRY | 8 AIRCRAFT CHART C ENTRY |
| A | COCKPIT COMPARTMENT (32-110) | CONTINUED | | | | | | | | | | | |
| A-18 | CUSHIONS, BACK, PILOT & CO-PILOT (2) | 4 | 103 | 4.1 | | ✓ | ✓ | | | | | | |
| * A-19 | SHOULDER HARNESS (1101155-0) (2) | 2 | 103 | 2.1 | | ✓ | ✓ | | | | | | |
| A-20 | JUMP SEAT & SAFETY BELT | 7 | 104 | 7.3 | | 0 | 0 | | | | | | |
| A-21 | FIRST AID KIT | 2 | 108 | 2.2 | | 0 | 0 | | | | | | |
| * A-22 | PORTABLE FIRE EXT. (KIDDE 2TA) | 7 | 108 | 7.6 | | ✓ | ✓ | | | | | | |
| A-23 | WINDSHIELD WASHER BAG (INCL. FLUID) | 4 | 108 | 4.3 | | ✓ | ✓ | | | | | | |
| A-24 | AIRSPD IND. (B12961-04-003) (ALTERNATE) | 2 | 61 | 0.1 | | ✓ | ✓ | | | | | | |
| A-25 | FREE AIR TEMP. IND. (2289) | 0.2 | 71 | 0.1 | | ✓ | ✓ | | | | | | |
| A-26 | COURSE IND. (IN-12-1) (2) | 3 | 63 | 1.9 | | ✓ | ✓ | | | | | | |
| A-27 | CONTROL UNIT 20500/ARC-21A | 2 | 78 | 1.6 | | ✓ | ✓ | | | | | | |
| ** A-28 | COCKPIT CARPETING | | 84 | | | 0 | 0 | | | | | | |
| A-29 | AFF Tracker | 2 | 92 | 1.8 | | 0 | ✓ | | | | | | |
| B | ELECTRONICS COMPARTMENT (32-110) | | | | | | | | | | | | |
| B-1 | LANDING LIGHT (GRIMES 45-0013) (2) (ALTERNATE TO ITEM B-15) | 15 | 66 | 9.9 | | ✓ | ✓ | | | | | | |
| B-2 | VOLTAGE REGULATOR (E-1597-1) | 3 | 73 | 2.2 | | ✓ | ✓ | | | | | | |

*MANDATORY FLIGHT EQUIPMENT

**USE ACTUAL WEIGHT

SIKORSKY AIRCRAFT
S-61N FLIGHT MANUALPart 2, Section IV
Loading Information

| CHART A - EMPTY WEIGHT CHECK LIST | | | | | | | | | | | | |
|---|---|--------|-----|------------|--------------------|-----------------------------------|-----------------------------------|-----------------------------------|-----------------------------------|-----------------------------------|-----------------------------------|-----------------------------------|
| AIRCRAFT MODEL S-61N SERIAL NO. 61297 ENTER DATE 2-11-67 1-4-68 | | | | | | | | | | | | |
| ITEM NUMBER | ITEMS AND LOCATION GROUPED BY COMPARTMENT | WEIGHT | ARM | MOMENT/100 | DELIVERY EQUIPMENT | CHECK | CHECK | CHECK | CHECK | CHECK | CHECK | CHECK |
| | | | | | | 1 AIRCRAFT CHART C ENTRY | 2 AIRCRAFT CHART C ENTRY | 3 AIRCRAFT CHART C ENTRY | 4 AIRCRAFT CHART C ENTRY | 5 AIRCRAFT CHART C ENTRY | 6 AIRCRAFT CHART C ENTRY | 7 AIRCRAFT CHART C ENTRY |
| B | ELECTRONICS COMPARTMENT (32-110) (CONTINUED) | | | | | | | | | | | |
| B-3 | RELAY (HARTMAN A-927A) | 3 | 76 | 2.3 | | ✓ | ✓ | | | | | |
| B-4 | AMPLIFIER (BENDIX AMA-10A) | 6 | 82 | 4.9 | | ✓ | ✓ | | | | | |
| * B-5 | GYROSYN COMPASS (C4A) | 7 | 83 | 5.0 | | ✓ | ✓ | | | | | |
| * B-6 | AMPLIFIER (884535) | 7 | 83 | 5.8 | | ✓ | ✓ | | | | | |
| B-7 | CONVERTER (6RW162YF1) (1) | 21 | 84 | 17.6 | | ✓ | ✓ | | | | | |
| * B-8 | INVERTER (SE16-3) | 14 | 86 | 12.0 | | ✓ | ✓ | | | | | |
| * B-9 | CONTROL GYRO (LEAR 7000B) (2) | 14 | 86 | 12.0 | | ✓ | ✓ | | | | | |
| B-10 | SUPERVISORY PANEL (34B12-2) (2) | 14 | 88 | 12.3 | | ✓ | ✓ | | | | | |
| * B-11 | AMPLIFIER GYRO (LEAR 551DE) (2) | 5 | 89 | 4.5 | | ✓ | ✓ | | | | | |
| * B-12 | RADIO, JURY RIG INSTAL. (RT11A) (S6105-6110) | 38 | 90 | 34.2 | | ✓ | ✓ | | | | | |
| B-13 | CONTROL UNIT, HEATER (CYLZ-1886-40) | 3 | 96 | 2.9 | | ✓ | ✓ | | | | | |
| B-14 | CONTROL UNIT, ANTI-ICE (1378-1B0) | 11 | 104 | 11.4 | | ✓ | ✓ | | | | | |
| * B-15 | LANDING LIGHT (GRIMES 45-0013- 3) (2) | 16 | 66 | 10.6 | | ✓ | ✓ | | | | | |
| B-16 | CRUISE LIGHT #9371 (STOWED POSITION) | 3 | 106 | 3.2 | | 0 | 0 | | | | | |
| ** B-17 | AUXILIARY BATTERY Leadacid | 80 | 120 | 96 | | 0 | 0 | | | | | |
| B-18 | Puls-lite System | 2 | 75 | 1.5 | | 0 | ✓ | | | | | |

*MANDATORY FLIGHT EQUIPMENT.

** USE ACTUAL WEIGHT

September 9, 1963
Reissued December 17, 1971

Part 2, Section IV
Loading InformationSIKORSKY AIRCRAFT
S-61N FLIGHT MANUAL

| CHART A - EMPTY WEIGHT CHECK LIST | | | | | | | | | | | | | | | | | | | | | | |
|--|--|--------|-----|------------|--------------------|-------------|---------------|-------------|---------------|-------------|---------------|-------------|---------------|-------------|---------------|-------------|---------------|-------------|---------------|-------------|---------------|-------------|
| AIRCRAFT MODELS-61N SERIAL NO. 61297 ENTER DATE 8-11-07 1-2-08 | | | | | | | | | | | | | | | | | | | | | | |
| ITEM NUMBER | ITEMS AND LOCATION GROUPED BY COMPARTMENT | WEIGHT | ARM | MOMENT/100 | DELIVERY EQUIPMENT | CHECK 1 | | CHECK 2 | | CHECK 3 | | CHECK 4 | | CHECK 5 | | CHECK 6 | | CHECK 7 | | CHECK 8 | | |
| | | | | | | IN AIRCRAFT | CHART C ENTRY | IN AIRCRAFT | CHART C ENTRY | IN AIRCRAFT | CHART C ENTRY | IN AIRCRAFT | CHART C ENTRY | IN AIRCRAFT | CHART C ENTRY | IN AIRCRAFT | CHART C ENTRY | IN AIRCRAFT | CHART C ENTRY | IN AIRCRAFT | CHART C ENTRY | IN AIRCRAFT |
| C | CABIN (110-493) | | | | | | | | | | | | | | | | | | | | | |
| C-1 | SLIDING DOOR, COCKPIT TO CABIN | 8 | 110 | 8.8 | | 0 | | 0 | | | | | | | | | | | | | | |
| C-2 | HEATING SYSTEM: | | | | | | | | | | | | | | | | | | | | | |
| | FUEL CONTROL UNIT (B54C00) | 8 | 117 | 9.4 | | 1 | | 1 | | | | | | | | | | | | | | |
| | HEATER (JANITROL A90C13) | 33 | 118 | 38.9 | | 1 | | 1 | | | | | | | | | | | | | | |
| | BLOWER (BENSON 134201-1) | 15 | 118 | 17.7 | | 1 | | 1 | | | | | | | | | | | | | | |
| | SWITCH, AIR PRESSURE | 1 | 123 | 1.2 | | 1 | | 1 | | | | | | | | | | | | | | |
| | IGNITION UNIT (A11C30) | 6 | 124 | 7.4 | | 1 | | 1 | | | | | | | | | | | | | | |
| C-3 | PASSENGER SEAT & BELTS (2 PLACE) | | 124 | | | 0 | | 0 | | | | | | | | | | | | | | |
| C-4 | BAGGAGE ENCLOSURE - S6109-51327 | | 150 | | | 0 | | 0 | | | | | | | | | | | | | | |
| C-5 | #3-193 TRAYS (24) | | 160 | | | 0 | | 0 | | | | | | | | | | | | | | |
| C-6 | GALLEY S6109-51318 | | 166 | | | 0 | | 0 | | | | | | | | | | | | | | |
| C-7 | #1343 BEVERAGE JUG (1) | | 168 | | | 0 | | 0 | | | | | | | | | | | | | | |
| C-8 | PASSENGER SEAT & BELT (1 PLACE) | | 171 | | | 0 | | 0 | | | | | | | | | | | | | | |
| C-9 | 6TNS PAPER CUPS & DISPENSER | | 172 | | | 1 | | 0 | | | | | | | | | | | | | | |
| C-10 | #1343 BEVERAGE JUGS (2) | | 175 | | | 0 | | 0 | | | | | | | | | | | | | | |
| C-11 | UNUSABLE FUEL-FWD TANK | 2 | 204 | 4.1 | | 1 | | 1 | | | | | | | | | | | | | | |
| C-12 | PASSENGER SEAT & BELTS (2 PLACE) | | 205 | | | 1 | | 0 | | | | | | | | | | | | | | |
| C-13 | PASSENGER SEAT & BELT (1 PLACE) | | 205 | | | 1 | | 0 | | | | | | | | | | | | | | |
| C-14 | PASSENGER SEAT & BELTS (2 PLACE) | | 239 | | | 0 | | 0 | | | | | | | | | | | | | | |
| C-15 | PASSENGER SEAT & BELT (1 PLACE) | | 239 | | | 1 | | 0 | | | | | | | | | | | | | | |
| C-16 | PASSENGER SEAT & BELTS (2 PLACE) | | 273 | | | 0 | | 0 | | | | | | | | | | | | | | |

*MANDATORY FLIGHT EQUIPMENT.

STORSKY AIRCRAFT
 S-61N FLIGHT MANUAL

 Part 2, Section IV
 Loading Information

| CHART A - EMPTY WEIGHT CHECK | | | | | | | | | | | | | |
|--|--|--------|-----|------------|--------------------|------------------------|------------------------|------------------------|------------------------|------------------------|------------------------|------------------------|------------------------|
| AIRCRAFT MODEL S-61N SERIAL NO. 61287 ENTER DATE 8-11-07 1.400 | | | | | | | | | | | | | |
| ITEM NUMBER | ITEMS AND LOCATION GROUPED BY COMPARTMENT | WEIGHT | ARM | MOMENT/100 | DELIVERY EQUIPMENT | CHECK | | CHECK | | CHECK | | CHECK | |
| | | | | | | AIRCRAFT CHART C ENTRY | AIRCRAFT CHART C ENTRY | AIRCRAFT CHART C ENTRY | AIRCRAFT CHART C ENTRY | AIRCRAFT CHART C ENTRY | AIRCRAFT CHART C ENTRY | AIRCRAFT CHART C ENTRY | AIRCRAFT CHART C ENTRY |
| C | CABIN (110-493) (CONTINUED) | | | | | | | | | | | | |
| C-17 | PASSENGER SEAT & BELT (1 PLACE) | | 273 | | | ✓ | 0 | | | | | | |
| C-18 | UNUSABLE FUEL-AFT TANK | 3 | 306 | 9.2 | | ✓ | 1 | | | | | | |
| C-19 | PASSENGER SEAT & BELTS (2 PLACE) | | 307 | | | 0 | 0 | | | | | | |
| C-20 | PASSENGER SEAT & BELT (1 PLACE) | | 307 | | | ✓ | 0 | | | | | | |
| C-21 | VIBRATION ABSORBER INSTL. (36120-70010) | 184 | 310 | 570.4 | | 0 | 0 | | | | | | |
| C-22 | HAND FIRE EXTINGUISHER (CHARGED) | 7 | 319 | 22.3 | | ✓ | 1 | | | | | | |
| C-23 | FIRST AID KIT # 1C | 2 | 320 | 6.4 | | ✓ | 1 | | | | | | |
| C-24 | ATTENDANT'S SEAT & BELT | | 322 | | | 0 | 0 | | | | | | |
| C-25 | PASSENGER SEAT & BELT (1 PLACE) | | 341 | | | 0 | 0 | | | | | | |
| C-26 | PASSENGER SEAT & BELTS (2 PLACE) | | 371 | | | ✓ | 0 | | | | | | |
| C-27 | PASSENGER SEAT & BELT (1 PLACE) | | 375 | | | 0 | 0 | | | | | | |
| C-28 | PASSENGER SEAT & BELTS (2 PLACE) | | 409 | | | ✓ | 0 | | | | | | |
| C-29 | PASSENGER SEAT & BELT (1 PLACE) | | 409 | | | 0 | 0 | | | | | | |
| C-30 | PASSENGER SEAT & BELTS (2 PLACE) | | 443 | | | ✓ | 0 | | | | | | |
| C-31 | PASSENGER SEAT & BELTS (2 PLACE) | | 472 | | | 0 | 0 | | | | | | |
| C-32 | UPHOLSTERED INTERIOR: | | | | | 0 | 0 | | | | | | |
| ** | FORWARD PANELS | | | | | ✓ | ✓ | | | | | | |
| ** | CARPET | | | | | ✓ | ✓ | | | | | | |

**MANDATORY FLIGHT EQUIPMENT. **USE ACTUAL WEIGHT.

 September 9, 1963
 Reissued December 17, 1971

Part 2, Section IV
Loading InformationSROREKY AIRCRAFT
S-61N FLIGHT MANUAL

| CHART A - EMPTY WEIGHT CHECK LIST | | | | | | | | | | | | | |
|---|--|--------|-----|------------|--------------------|---------------------------|---------------------------|---------------------------|---------------------------|---------------------------|---------------------------|---------------------------|---------------------------|
| AIRCRAFT MODEL S-61N SERIAL NO. 61997 ENTER DATE 8-11-07 1-4-08 | | | | | | | | | | | | | |
| ITEM NUMBER | ITEMS AND LOCATION GROUPED BY COMPARTMENT | WEIGHT | ARM | MOMENT/100 | DELIVERY EQUIPMENT | CHECK | | CHECK | | CHECK | | CHECK | |
| | | | | | | IN AIRCRAFT CHART C ENTRY | IN AIRCRAFT CHART C ENTRY | IN AIRCRAFT CHART C ENTRY | IN AIRCRAFT CHART C ENTRY | IN AIRCRAFT CHART C ENTRY | IN AIRCRAFT CHART C ENTRY | IN AIRCRAFT CHART C ENTRY | IN AIRCRAFT CHART C ENTRY |
| C | CABIN (110-493) (CONTINUED) | | | | | | | | | | | | |
| C-32 | CONTINUED | | | | | | | | | | | | |
| ** | CEILING UPHOLSTERY | | | | | ✓ | ✓ | | | | | | |
| ** | UNDERCARPET PADDING | | | | | ✓ | ✓ | | | | | | |
| ** | UPHOLSTERED PANELS, R. H. | | | | | ✓ | ✓ | | | | | | |
| ** | UPHOLSTERED PANELS, L. H. | | | | | ✓ | ✓ | | | | | | |
| ** | BATTING - SOUNDPROOFING | | | | | ✓ | ✓ | | | | | | |
| ** | AFT PANELS | | | | | ✓ | ✓ | | | | | | |
| C-33 | LAVATORY | | | | | 0 | 0 | | | | | | |
| | WATER TANK ASSY S6109-51311-041 | | 465 | | | 0 | 0 | | | | | | |
| | WATER (5 GAL.) | 42 | 465 | | | 0 | 0 | | | | | | |
| | SINK & ENCLOSURE | | 467 | | | 0 | 0 | | | | | | |
| | MIRROR S6109-51345-081 | | 467 | | | 0 | 0 | | | | | | |
| | TOILET ASSY S6109-51310-043 | | 481 | | | 0 | 0 | | | | | | |
| | PAPER HOLDER 42G39115 & PAPER | | 485 | | | 0 | 0 | | | | | | |
| | PAPER TOWEL DISPENSER 2030 & PAPER | | 485 | | | 0 | 0 | | | | | | |
| ** | C-34 PASSENGER SEAT & BELT (2 PLACE) | | 171 | | | 0 | 0 | | | | | | |
| ** | C-35 ATTENDANT SEAT & BELT | | 350 | | | 0 | 0 | | | | | | |
| | C-36 BAGGAGE RACK | | 370 | | | 0 | 0 | | | | | | |
| | C-37 CONTAINER ASSEMBLY 6109-51360 | 6 | 372 | 22.3 | | 0 | 0 | | | | | | |
| | C-38 PORTABLE OXYGEN BREATHING UNIT MODEL 8000B1-0 | 13 | 376 | 40.9 | | 0 | 0 | | | | | | |

**USE ACTUAL WEIGHT.

SIKORSKY AIRCRAFT
S-61N FLIGHT MANUAL

Part 2, Section IV
Loading Information

| CHART A - EMPTY WEIGHT CHECK LIST | | | | | | | | | | | | | | | | | | | | | | |
|---|--|--------|-----|------------|--------------------|---------------------------|---------------------------|---------------------------|---------------------------|---------------------------|---------------------------|---------------------------|---------------------------|---------------------------|---------------------------|---------------------------|---------------------------|---------|--|---------|--|--|
| AIRCRAFT MODEL S-61N SERIAL NO. 61297 ENTER DATE 8-11-07 1-4-00 | | | | | | | | | | | | | | | | | | | | | | |
| ITEM NUMBER | ITEMS AND LOCATION GROUPED BY COMPARTMENT | WEIGHT | ARM | MOMENT/100 | DELIVERY EQUIPMENT | CHECK 1 | | CHECK 2 | | CHECK 3 | | CHECK 4 | | CHECK 5 | | CHECK 6 | | CHECK 7 | | CHECK 8 | | |
| | | | | | | IN AIRCRAFT CHART C ENTRY | IN AIRCRAFT CHART C ENTRY | IN AIRCRAFT CHART C ENTRY | IN AIRCRAFT CHART C ENTRY | IN AIRCRAFT CHART C ENTRY | IN AIRCRAFT CHART C ENTRY | IN AIRCRAFT CHART C ENTRY | IN AIRCRAFT CHART C ENTRY | IN AIRCRAFT CHART C ENTRY | IN AIRCRAFT CHART C ENTRY | IN AIRCRAFT CHART C ENTRY | IN AIRCRAFT CHART C ENTRY | | | | | |
| D | ENGINE & TRANSMISSION COMPT. (160-330) | | | | | | | | | | | | | | | | | | | | | |
| * D-1 | STARTER (G. E. 2CM270D3) (2) | 35 | 179 | 62.6 | | ✓ | | ✓ | | | | | | | | | | | | | | |
| D-2 | OIL TANK (S6130-80205) (2) | 8 | 181 | 14.5 | | ✓ | ✓ | ✓ | | | | | | | | | | | | | | |
| D-3 | OIL - full | | 200 | | | ✓ | ✓ | ✓ | | | | | | | | | | | | | | |
| D-4 | ENGINE (CT58-110-1) L. H. # | | 207 | | | ✓ | ✓ | ✓ | | | | | | | | | | | | | | |
| D-5 | ENGINE (CT58-110-1) R. H. # | | 207 | | | ✓ | ✓ | ✓ | | | | | | | | | | | | | | |
| D-6 | OIL, MAIN GEAR BOX & COOLER | 77 | 274 | 210.9 | | ✓ | | ✓ | | | | | | | | | | | | | | |
| D-7 | HYDRAULIC PUMP (68 WAP200) (2) | 18 | 292 | 52.6 | | ✓ | | ✓ | | | | | | | | | | | | | | |
| * D-8 | GENERATOR (BENDIX 28E20-27A) | | | | | | | | | | | | | | | | | | | | | |
| | (2) | 96 | 295 | 283.2 | | ✓ | | ✓ | | | | | | | | | | | | | | |
| * D-9 | GENERATOR (BENDIX 30E20-39) | 47 | 300 | 141.0 | | ✓ | | ✓ | | | | | | | | | | | | | | |
| * D-10 | BLOWER, OIL COOLER (A15008) | 8 | 317 | 25.4 | | ✓ | | ✓ | | | | | | | | | | | | | | |
| * D-11 | FIRE EXT. - ENGINE (CHARGED) | 19 | 329 | 62.5 | | ✓ | | ✓ | | | | | | | | | | | | | | |
| | (891134) (2) | | | | | ✓ | | ✓ | | | | | | | | | | | | | | |
| * D-12 | TRANSMISSION OIL COOLER (DRY) | 28 | 332 | 93.0 | | ✓ | | ✓ | | | | | | | | | | | | | | |
| | (8528061) | | | | | ✓ | | ✓ | | | | | | | | | | | | | | |
| D-13 | ENGINE (CT58-140-1, LH) | | 207 | | | ✓ | | ✓ | | | | | | | | | | | | | | |
| D-14 | ENGINE (CT58-140-1, RH) | | 207 | | | ✓ | | ✓ | | | | | | | | | | | | | | |
| D-15 | Ag-Air hydraulic system | 108 | 258 | 279.3 | | ✓ | | ✓ | | | | | | | | | | | | | | |

*MANDATORY FLIGHT EQUIPMENT.

Part 2, Section IV
Loading InformationSIKORSKY AIRCRAFT
S-61N FLIGHT MANUAL

| CHART A - EMPTY WEIGHT CHECK LIST | | | | | | | | | | | | | |
|---|--|--------|-------|------------|--------------------|---------------------------|---------------------------|---------------------------|---------------------------|---------------------------|---------------------------|---------------------------|---------------------------|
| AIRCRAFT MODEL S-61N SERIAL NO. 61297 ENTER DATE 8-11-07 1-4-08 | | | | | | | | | | | | | |
| ITEM NUMBER | ITEMS AND LOCATION GROUPED BY COMPARTMENT | WEIGHT | ARM | MOMENT/100 | DELIVERY EQUIPMENT | CHECK 1 | CHECK 2 | CHECK 3 | CHECK 4 | CHECK 5 | CHECK 6 | CHECK 7 | CHECK 8 |
| | | | | | | IN AIRCRAFT CHART C ENTRY | IN AIRCRAFT CHART C ENTRY | IN AIRCRAFT CHART C ENTRY | IN AIRCRAFT CHART C ENTRY | IN AIRCRAFT CHART C ENTRY | IN AIRCRAFT CHART C ENTRY | IN AIRCRAFT CHART C ENTRY | IN AIRCRAFT CHART C ENTRY |
| E | TAIL CONE & PYLON (493-705) | | | | | | | | | | | | |
| E-1 | BLOWER, FRESH AIR (M4941A) | 7 | 497 | 34.8 | | 0 | 0 | | | | | | |
| E-2 | BLOWER, FRESH AIR (M5862X) | 12 | 497 | 59.6 | | 0 | 0 | | | | | | |
| E-3 | FLUX VALVE & COMPENSATOR - C4A | | | | | | | | | | | | |
| E-4 | CATWALK | 2 | 543 | 10.9 | | ✓ | ✓ | | | | | | |
| E-5 | OIL, INTERMED, & TAIL GEAR BOXES | 4 | 543 | 21.7 | | ✓ | ✓ | | | | | | |
| E-6 | RECEIVER (R-836/ARC-21A) | 5 | 687 | 34.4 | | ✓ | ✓ | | | | | | |
| E-7 | DYNAMOTOR (DY-150/ARC-21A) | 7 | 517 | 36.2 | | 0 | 0 | | | | | | |
| | | 5 | 524 | 26.2 | | 0 | 0 | | | | | | |
| F | EXTERNAL EQUIPMENT | | | | | | | | | | | | |
| F-8 | Aerial liquid tank | 1090 | 261 | 2845 | | 0 | 0 | | | | | | |
| F-9 | Goodrich AC Rescue Hoist | 135 | 156.4 | 211 | | 0 | 0 | | | | | | |
| F-10 | | | | | | | | | | | | | |
| *F-1 | MAIN TIRES 8.50 x 10 (4) | 50 | 221 | 110.5 | | ✓ | ✓ | | | | | | |
| *F-2 | TAIL TIRE 8.00 x 6 | 9 | 505 | 45.5 | | ✓ | ✓ | | | | | | |
| F-3 | WIRE ANTENNA (ARC-21A) | 3 | 540 | 16.2 | | 0 | 0 | | | | | | |
| F-4 | LOOP ANTENNA L-11 | 5 | 595 | 29.8 | | 0 | 0 | | | | | | |
| | ENGINE AIR INLET ICE DEFLECTOR | 33 | 154 | 50.8 | | 0 | 0 | | | | | | |
| F-5 | Fixed gear installation | 357 | 177 | 631.9 | | 0 | ✓ | | | | | | |
| F-6 | Sponson installation | 971 | 121 | 1660.4 | | ✓ | 0 | | | | | | |
| F-7 | Hoist | 129 | 211 | 272.2 | | 0 | 0 | | | | | | |

*MANDATORY FLIGHT EQUIPMENT.

SIKORSKY AIRCRAFT
S-61N FLIGHT MANUAL

Part 2, Section IV
Loading Information

| CHART A - EMPTY WEIGHT CHECK LIST | | | | | | | | | | | | | | | |
|---|---|--------|-----|------------|--------------------|---------------------------|---------------------------|---------------------------|---------------------------|---------------------------|---------------------------|---------------------------|---------------------------|-------|--|
| AIRCRAFT MODEL S-61N SERIAL NO. 61297 ENTER DATE <u>8-11-07</u> <u>1-4-08</u> | | | | | | | | | | | | | | | |
| ITEM NUMBER | ITEMS AND LOCATION GROUPED BY COMPARTMENT | WEIGHT | ARM | MOMENT/100 | DELIVERY EQUIPMENT | CHECK | | CHECK | | CHECK | | CHECK | | CHECK | |
| | | | | | | AIRCRAFT CHART C IN ENTRY | AIRCRAFT CHART C IN ENTRY | AIRCRAFT CHART C IN ENTRY | AIRCRAFT CHART C IN ENTRY | AIRCRAFT CHART C IN ENTRY | AIRCRAFT CHART C IN ENTRY | AIRCRAFT CHART C IN ENTRY | AIRCRAFT CHART C IN ENTRY | | |
| G | ROTOR & ROTOR EQUIPMENT | | | | | | | | | | | | | | |
| G-1 | MAIN ROTOR BLADES (B. L. M.) | | 267 | | | | | | | | | | | | |
| G-2 | MAIN ROTOR FAIRING | 8 | 267 | 21.4 | | | | | | | | | | | |
| G-3 | TAIL ROTOR BLADES | 31 | 705 | 218.6 | | | | | | | | | | | |
| G-4 | Composite MRB's | 1135 | 267 | 3030.5 | | | | | | | | | | | |
| | | | | | | | | | | | | | | | |
| | | | | | | | | | | | | | | | |
| | | | | | | | | | | | | | | | |
| | | | | | | | | | | | | | | | |
| | | | | | | | | | | | | | | | |
| | | | | | | | | | | | | | | | |
| | | | | | | | | | | | | | | | |
| | | | | | | | | | | | | | | | |
| | | | | | | | | | | | | | | | |
| | | | | | | | | | | | | | | | |
| | | | | | | | | | | | | | | | |
| | | | | | | | | | | | | | | | |
| | | | | | | | | | | | | | | | |

September 9, 1963
Reissued December 17, 1971