

WAAS CH 77502 W14A	APP CRS 136°	Rwy Idg TDZE Apt Elev	4202 520 539
--	------------------------	-----------------------------	---

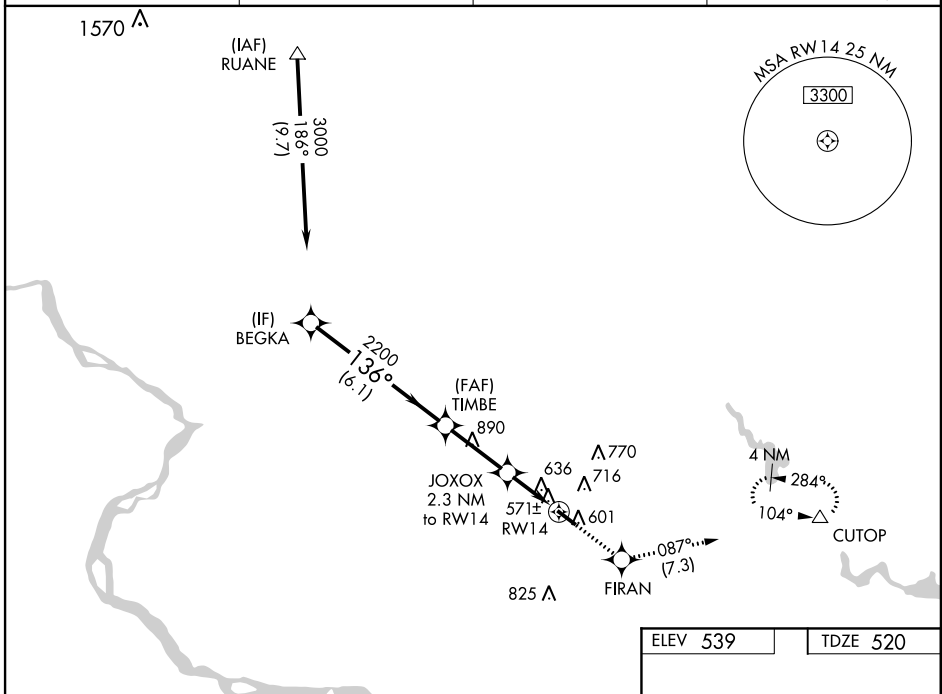
RNAV (GPS) RWY 14

MONTGOMERY COUNTY AIRPARK (GAI)

⚠ Circling to Rwy 32 NA at night. Baro-VNAV NA when using Washington Dulles Intl altimeter setting. For uncompensated Baro-VNAV systems, LNAV/VNAV NA below -16°C (4°F) or above 36°C (96°F). When local altimeter setting not received, use Washington Dulles Intl altimeter setting and increase all DA/MDAs 80 feet and all visibilities ¼ mile. DME/DME RNP-0.3 NA. Visibility reduction by helicopters NA.

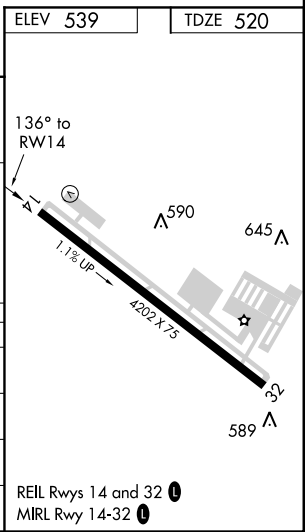
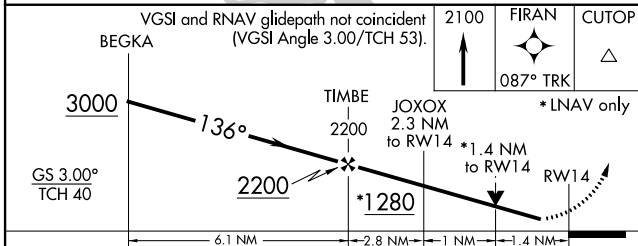
MISSED APPROACH:
Climb to 2100 direct FIRAN and on track 087° to CUTOP and hold.

AWOS-3 128.275	POTOMAC APP CON 128.7 291.625	CLNC DEL 121.6	UNICOM 123.075 (CTAF) 📻
--------------------------	---	--------------------------	--



NE-3, 13 NOV 2014 to 11 DEC 2014

NE-3, 13 NOV 2014 to 11 DEC 2014



CATEGORY	A	B	C	D
LPV DA	789-1 269 (300-1)			
LNAV/ VNAV DA	919-1½ 399 (400-1½)			
LNAV MDA	980-1 460 (500-1)	980-1½ 460 (500-1¼)		980-1½ 460 (500-1½)
CIRCLING	1020-1 481 (500-1)	1020-1½ 481 (500-1½)		1100-2 561 (600-2)

REIL Rwy 14 and 32 **📻**
MIRL Rwy 14-32 **📻**