



## **NATIONAL TRANSPORTATION SAFETY BOARD**

Office of Aviation Safety  
Washington, D.C. 20594

May 8, 2014

### **Attachment 5 – Weather**

# **OPERATIONAL FACTORS**

**DCA14IA037**

**Cover Page**

THE BREAK-EVEN LOAD FACTOR IS 72 PERCENT  
THE AVERAGE FUEL PRICE FOR 3RD QTR WAS \$3.06 PER GALLON.

RH

\*\*\*\*\*14 CFR PART 117 NOTICE\*\*\*\*\*

14 CFR Part 117 Pilot flight and duty limitations and rest requirements are effective January 4, 2014. FOM Bulletin 13-47 contains detailed information on Part 117, including applicable procedures and resources to ensure compliance. \*\*\*\*If you do not have 10 hours of rest from release of your current duty period to report time of your next duty period on the following day, please call Crew Scheduling prior to entering rest period so that your pairing can be modified.

COMPANY NOTICE :

No Global Notams issued

**Weather Packet****Flight Details**

Flight 4013, KMDW - KBBG	
Alternates	
Take Off	NONE
Landing	NONE
Driftdown	NONE
ETOPS	NONE

**Destination Weather KBBG : BKG : BRANSON****Surface Observations**

KBBG 122045Z 19017G25KT 10SM SKC 18/M04 A2973  
 KBBG 121948Z 18020G27KT 10SM SKC 18/M04 A2975

**DATIS**

No DATIS issued.

**Terminal Forecasts**

TAF KBBG 121720Z 1218/1318 18018G28KT P6SM SKC WS020/21050KT  
 FM130000 17014G24KT P6SM SKC WS020/21050KT  
 FM130600 23010KT P6SM FEW100 SCT250  
 FM131000 27007KT P6SM FEW100 SCT250  
 FM131600 29010G18KT P6SM SKC

**Departure Weather KMDW : MDW : CHICAGO MIDWAY****Surface Observations**

KMDW 122051Z 18015G24KT 10SM SCT200 BKN240 04/M01 A2968 RMK  
 AO2 SLP058 T00441011 56036  
 KMDW 121951Z 18016G23KT 10SM FEW190 BKN220 BKN250 03/M02 A2970  
 RMK AO2 PK WND 17026/1940 SLP066 T00331017

**DATIS**

MDW ATIS INFO B 2051Z. 18015G24KT 10SM SCT200 BKN240 04/M01 A2968 (TWO NINER SIX EIGHT). ILS RWY 31C APCH IN USE, CIR TO LND RWY 22L. LNDG AND DEPG RWYS 22. AIRCRAFT SHOULD OPERATE MODE CEE ON ALL TWYS AND RWYS. TURBOJET DEPARTURES MAINTAIN 250 KNOTS UNTIL ADVISED BY ATC. NON PDC AIRCRAFT CTC CD ON 124.625 VFR DEPARTURES INDC TYP, FLD LCTN, AND REQSTD HDG. MIDWAY A/C ON FREQUENCY 118.7. READBACK ALL RWY HOLD SHORT INSTRUCTIONS AND ALT ASSIGNMENTS. ...ADVS YOU HAVE INFO B.

**Terminal Forecasts**

TAF AMD KMDW 122000Z 1220/1318 18013G25KT P6SM FEW010 SCT120 BKN200  
 FM130000 20015G25KT P6SM SCT050 BKN250 WS020/22060KT  
 FM130600 20015G25KT P6SM SCT015 BKN250  
 FM131200 22010KT P6SM OVC100

**Alternate Weather**

Weather Packet : Destination Information KBBG : BKG : BRANSON

**Destination Information KBBG : BKG : BRANSON****RAFTs**

KBBG B737-700, B737-800  
Effective 2014-01-12 12:05Z to 2014-01-13 12:05Z  
0.30 available 12:05Z to 12:05Z

**Field Conditions**

Latest Field Conditions Available via ACARS or Dispatch

**Station Information**

No Company NOTAMs issued

**D NOTAMs**

!BBG 01/035 BKG OBST TOWER LGT (ASR 1243577) 363604.10N0924847.40W (19.2NM ENE BKG) 1268FT  
(311FT AGL) OUT OF SERVICE 1401121817-1401271817

**VOR NOTAMs**

No VOR NOTAMs issued.

**FDC NOTAMs**

No FDC NOTAMs issued.

**Military NOTAMs**

No Military NOTAMs issued.

**PIREPs**

BBG UA /OV BKG /TM 1944 /FL085 /TP C340 /SK SKC /TB NEG

Temp -48.2999992C  
Wind 59KT @ 241

Temp -47.7999992C  
Wind 52KT @ 238

Temp -50C  
Wind 49KT @ 240  
Turb: Smooth

Temp -48.2999992C  
Wind 54KT @ 241

Temp -50C  
Wind 71KT @ 233

Temp -48.9000015C  
Wind 55KT @ 236

Temp -47.7999992C  
Wind 61KT @ 253  
Turb: Smooth

Temp -49.4000015C  
Wind 74KT @ 242

Weather Packet : Departure Information KMDW : MDW : CHICAGO MIDWAY

**Departure Information KMDW : MDW : CHICAGO MIDWAY****RAFs**

KMDW B737-700, B737-800  
Effective 2014-01-12 12:05Z to 2014-01-13 12:05Z  
0.30 available 12:05Z to 12:05Z  
0.29 available 12:05Z to 12:05Z  
0.18 available 12:05Z to 12:05Z  
0.11 available 12:05Z to 12:05Z  
except for 17:42Z to 17:43Z

**Field Conditions**

Latest Field Conditions Available via ACARS or Dispatch

**Station Information**

No Company NOTAMs issued

**D NOTAMs**

!MDW 01/077 MDW OBST TOWER LGT (ASR UNKNOWN) 415321.00N873736.00W (8.39NM NE MDW) 1973FT (1375FT AGL) OUT OF SERVICE 1401120605-1401270647

!MDW 01/065 MDW OBST TOWER LGT (ASR 1249837) 414617.80N0874538.80W (0.9NM SSW MDW) 767FT (150FT AGL) OUT OF SERVICE 1401062038-1401212038

!MDW 01/058 MDW TWY ALL EDGE LGT OUT OF SERVICE 1401052001-1401121200EST

!MDW 01/054 MDW OBST TOWER LGT (ASR 1009368) 415253.50N0873824.70W (7.6NM NE MDW) 1183FT (573FT AGL) OUT OF SERVICE 1401051807-1401201807

!MDW 01/037 MDW OBST TOWER LGT (ASR 1002036) 414657.00N0873920.00W (4.3NM E MDW) 819FT (220FT AGL) OUT OF SERVICE 1401042109-1401192109

!MDW 01/036 MDW OBST TOWER LGT (ASR 1005041) 415624.00N0874119.00W (9.7NM NNE MDW) 859FT (269FT AGL) OUT OF SERVICE 1401042108-1401192108

!MDW 10/167 MDW OBST CRANE 418956N0876189W (9.5NM NE MDW) UNKNOWN (240FT AGL) NOT LGTD 1310222111-1402222108

!MDW 07/002 MDW OBST TOWER UNKN (86 AGL) (412045.23N874514W) WEF 1307011056

!MDW 05/030 MDW NAV ILS RWY 13C DME UNUSBL 15 DEGREES LEFT OF COURSE

**VOR NOTAMs**

!IKK 01/157 EON NAV VORTAC UNMONITORED 1401091606-1401161800EST

**FDC NOTAMs**

!FDC 3/3680 MDW IAP CHICAGO MIDWAY INTL, CHICAGO, IL.  
VOR/DME RNAV OR GPS RWY 22L, AMDT 3C...  
VOR/DME RNAV PORTION: ALTERNATE MINIMUMS NA, EON VORTAC UNMONITORED.  
1312201004-1406201004EST

!FDC 3/3681 MDW IAP CHICAGO MIDWAY INTL, CHICAGO, IL.  
ILS OR LOC/DME RWY 13C, ORIG-C...  
ILS OR LOC/DME RWY 31C, AMDT 2...  
ILS OR LOC/DME RWY 4R, AMDT 1B...  
ALTERNATE MINIMUMS NA, EON VORTAC UNMONITORED.  
1312201004-1406201004EST

!FDC 3/9106 MDW SID CHICAGO MIDWAY INTL, CHICAGO, IL.

Weather Packet : Departure Information KMDW : MDW : CHICAGO MIDWAY : FDC NOTAMS

CICERO SIX DEPARTURE...  
CHART I-MXT LOCALIZER FREQUENCY 109.9, CHAN 36.  
1311131730-1405131230EST

!FDC 3/1016 MDW FI/T IAP CHICAGO MIDWAY INTL, CHICAGO, IL.  
VOR/DME RNAV OR GPS RWY 22L, AMDT 3B...  
VOR/DME PORTION NA.

!FDC 3/3602 MDW FI/T CHICAGO MIDWAY INTL. IL.  
FISSK ARRIVAL...  
KOKOMO TRANSITION (OKK.FISSK2)  
FROM HALIE ON TRACK 270 TO CGT VORTAC. DEPART CGT VORTAC  
HEADING 335. EXPECT RADAR VECTORS TO FINAL APPROACH COURSE.

!FDC 3/3603 MDW FI/T CHICAGO MIDWAY INTL. IL.  
ENDEE ARRIVAL...  
PROCEDURE NOT AUTHORIZED

!FDC 3/3604 MDW FI/T CHICAGO MIDWAY INTL. IL.  
PANGG ARRIVAL...  
PROCEDURE NOT AUTHORIZED

**Military NOTAMs**

No Military NOTAMs issued.

**PIREPs**

Temp -53.2999992C  
Wind 92KT @ 252

Temp -50.5999985C  
Wind 96KT @ 250

Temp -51.7000008C  
Wind 89KT @ 251

**Alternate Information**

**Enroute Information**

**SIGMETs**

No SIGMETs issued.

**WSI SIGMETs**

No WSI SIGMETs issued.

**WSI FPGs**

No WSI FPGs issued.

**PIREPs**

Temp -53.2999992C  
Wind 92KT @ 252

Temp -47.2000008C  
Wind 75KT @ 270  
Turb: Smooth

Temp -53.2999992C  
Wind 63KT @ 245

Weather Packet : Enroute Information : PIREPs

SUS UUA /OV SUS /TM 2126 /FLUNKN /TP GLF4 /RM LLWS +/-15KT 010-SFC DURD RY26L SUS

Temp -49.4000015C  
Wind 50KT @ 250Temp -47.7999992C  
Wind 52KT @ 238

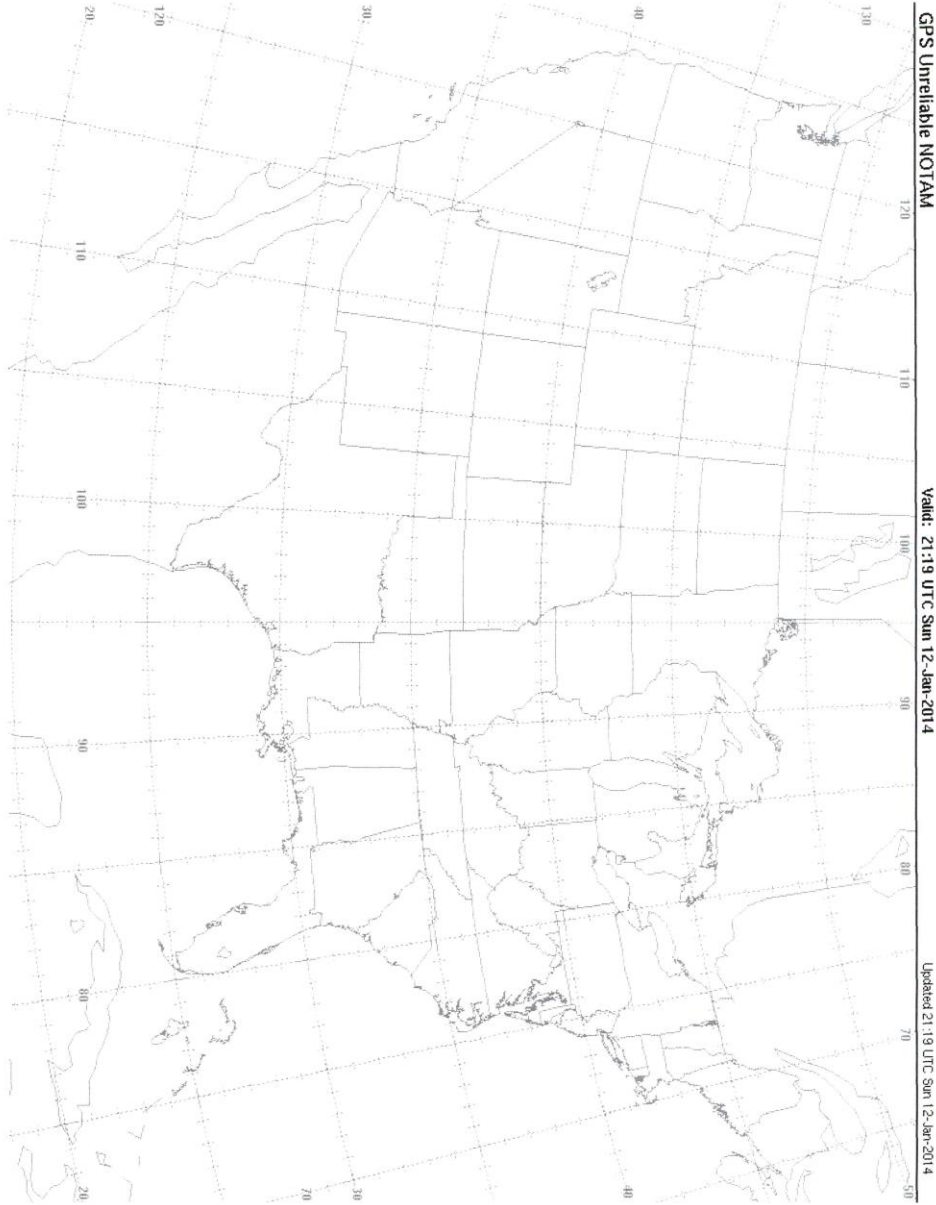
BBG UA /OV BBG /TM 1944 /FL085 /TP C340 /SK SKC /TB NEG

**D NOTAMs**

No D NOTAMs issued.

**Downline Stations KMDW : MDW : CHICAGO MIDWAY****Surface Observations**KMDW 122051Z 18015G24KT 10SM SCT200 BKN240 04/M01 A2968 RMK  
AO2 SLP058 T00441011 56036  
KMDW 121951Z 18016G23KT 10SM FEW190 BKN220 BKN250 03/M02 A2970  
RMK AO2 PK WND 17026/1940 SLP066 T00331017**Downline Stations KBBG : BKG : BRANSON****Surface Observations**KBBG 122045Z 19017G25KT 10SM SKC 18/M04 A2973  
KBBG 121948Z 18020G27KT 10SM SKC 18/M04 A2975**Downline Stations KDAL : DAL : DALLAS LOVE FIELD****Surface Observations**KDAL 122053Z 19017G26KT 10SM FEW110 SCT250 BKN300 22/02 A2984  
RMK AO2 PK WND 20031/2009 SLP100 OCNL BLDU ACRS RWY T02220022  
56034  
KDAL 121953Z 20017G24KT 10SM FEW200 SCT300 23/M02 A2985 RMK  
AO2 PK WND 22032/1935 SLP103 OCNL BLDU ACRS RWY T02331017**Downline Stations KMSY : MSY : LOUIS ARMSTRONG NEW ORLEANS IN****Surface Observations**KMSY 122053Z 18011KT 10SM SCT010 SCT250 18/02 A3012 RMK AO2  
SLP203 FU SCT010 T01780017 56017 \$  
KMSY 121953Z 18012KT 10SM SCT010 SCT250 19/02 A3013 RMK AO2  
SLP205 FU SCT010 T01890017 \$

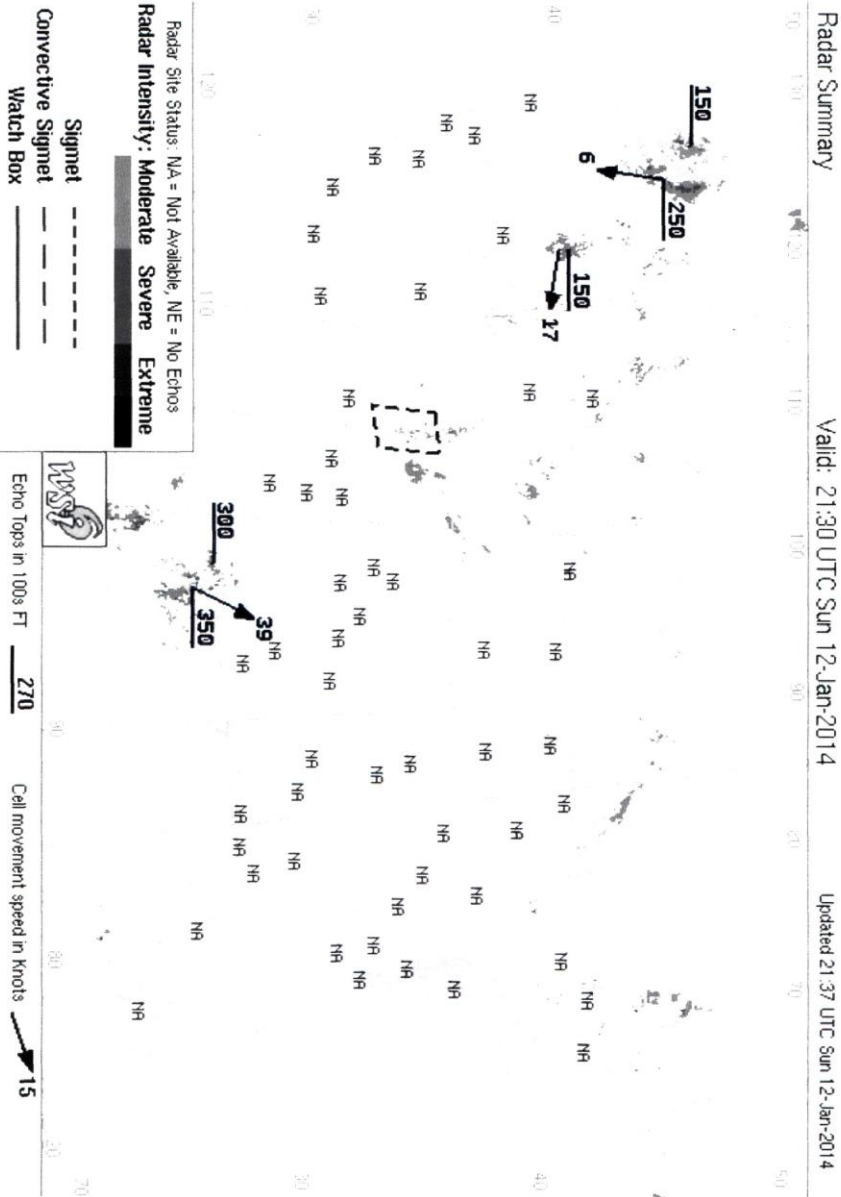
**Weather Charts**  
GPS NOTAM Unreliable





Weather Charts : Radar Summary

Radar Summary



Weather Charts : WSI FPGs

WSI FPGs

