

**NATIONAL TRANSPORTATION SAFETY BOARD**

Office of Aviation Safety  
Washington, D.C. 20594

**Attachment 15 - Navigational Charts**

**OPERATIONAL FACTORS**

**DCA11MA075**

## **A. ACCIDENT**

**Operator:** Omega Aerial Refueling Services, Inc.  
**Location:** Point Mugu Naval Air Station, California  
**Date:** May 18, 2011  
**Airplane:** Boeing 707-321B, Registration Number: N707AR

## **B. NATIONAL TRANSPORTATION SAFETY BOARD (NTSB) OPERATIONS GROUP**

Captain David Lawrence - Chairman  
Senior Air Safety Investigator  
National Transportation Safety Board  
490 L'Enfant Plaza East S.W.  
Washington, DC 20594

Captain John Banitt  
B707 Flight Standardization Officer  
Omega Air Refueling  
700 N. Fairfax Street, Suite 306  
Alexandria, Virginia 22314

Mr. Tony James  
Air Safety Investigator  
Federal Aviation Administration (FAA)  
800 Independence Ave. S.W.  
Washington, DC 20591

Mr. Michael Coker  
Senior Safety Pilot  
The Boeing Company  
P.O. Box 3707 MC 20-95  
Seattle, Washington 98124-2207

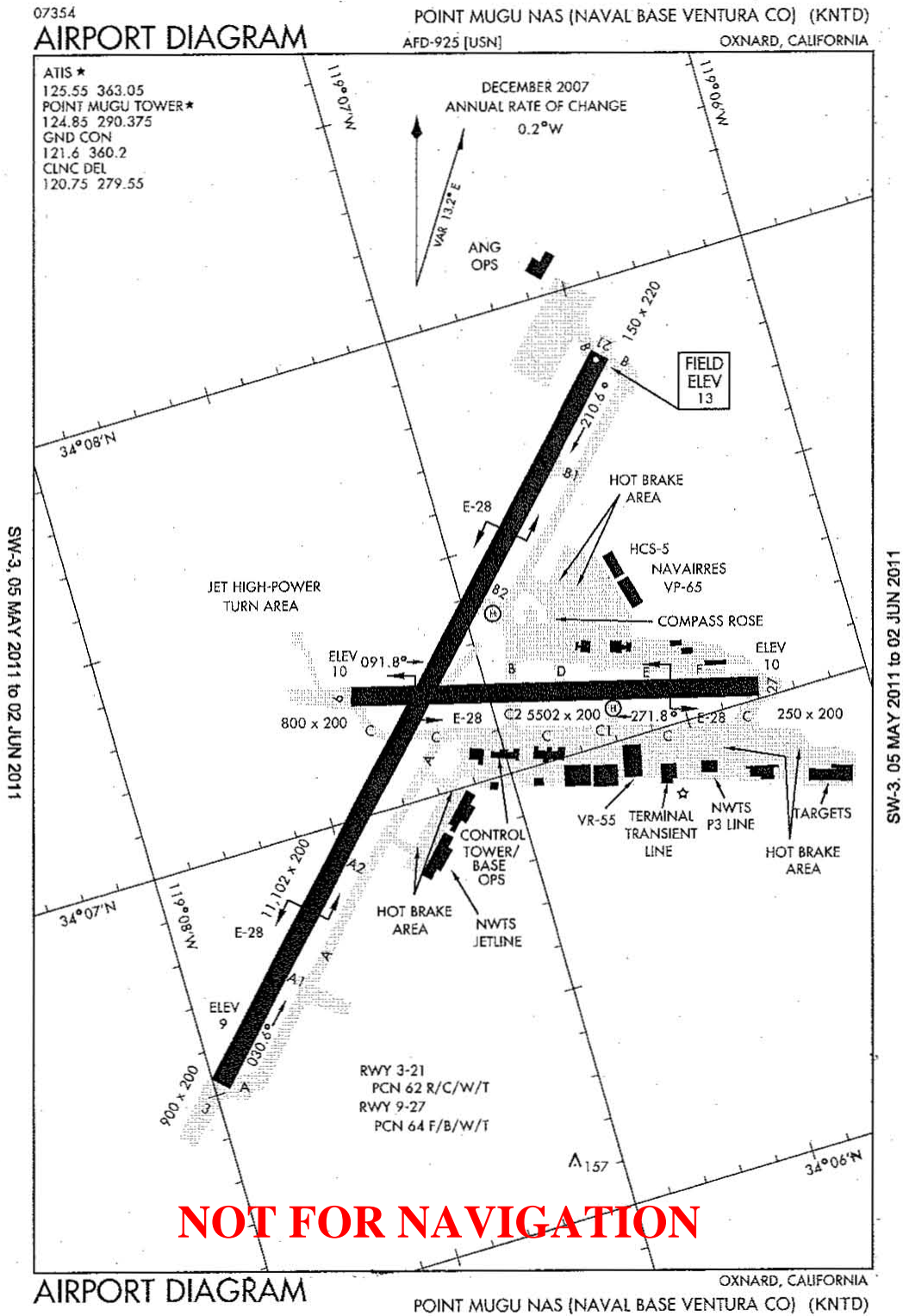
## **C. SUMMARY**

On May 18, 2011, at approximately 1727 pm local time (0027 UTC), Omega Air flight 70, a Boeing 707-321B (N707AR), crashed on takeoff at the Point Mugu Naval Air Station<sup>1</sup>, Point Mugu, California. The airplane impacted beyond the departure end of runway 21 and was destroyed by post-impact fire. All three flight crewmembers aboard escaped with minor injuries.

---

<sup>1</sup> Naval Base Ventura County.

D. NAVIGATIONAL CHARTS



**KNTD/NTD**

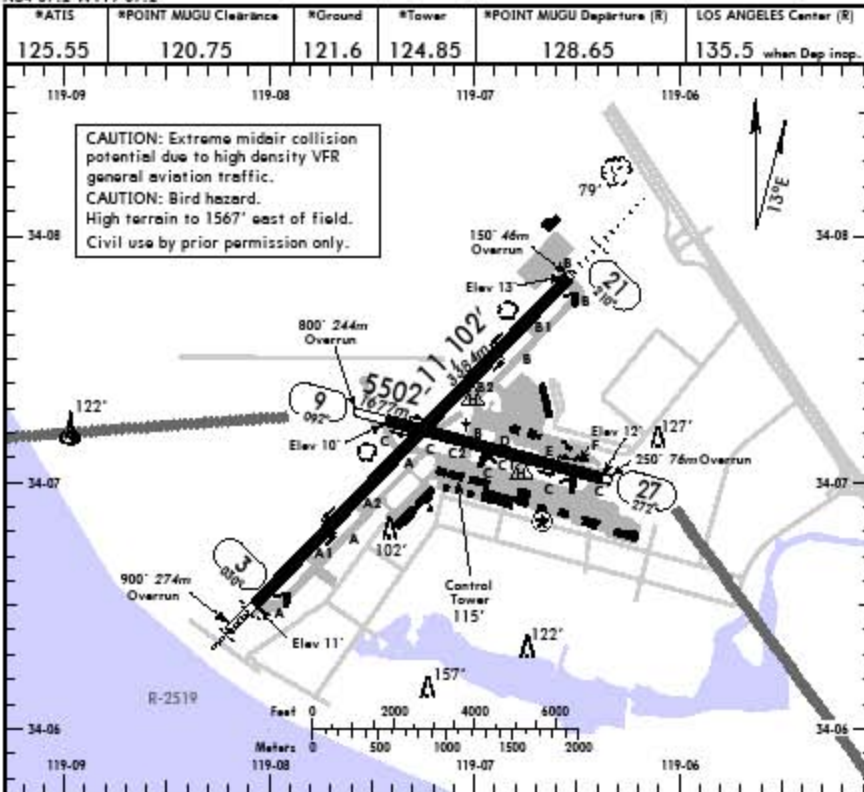
**JEPPESEN**

**POINT MUGU NAS**

Apt Elev 13'  
 N34 07.2 W119 07.2

25 JUN 10 (31-1)

OXNARD, CALIF



RWY	ADDITIONAL RUNWAY INFORMATION			USABLE LENGTHS			WIDTH
				LANDING BEYOND	TAKE-OFF		
3	HIRL	SALSF	VASI-L	Threshold	GLIDE SLOPE		200' 61m
21	HIRL	MALSR	VASI-R		PAR 10,181' 3103m		
9	HIRL				10,232' 3119m		200' 61m
27	HIRL						

**NOT FOR NAVIGATION**

	TAKE-OFF		FOR FILING AS ALTERNATE	
	Adequate Vis Ref	STD	Precision	Non-Precision
1 & 2 Eng	1/4	I	600-2	800-2
3 & 4 Eng		1/2		

Rwy 3: Diverse departures authorized 210° clockwise to 250°. Right turns on departure not authorized. Turn left to assigned heading within D3.0 NTD TAC. Do not exceed 310 KIAS until established on assigned heading.  
 Rwy 27: Diverse departures authorized 150° clockwise to 250°. Right turns on departure not authorized. Turn left to assigned heading. Do not exceed 310 KIAS until established on assigned heading.  
 Rwy 21: Diverse departures authorized 150° clockwise to 250°. Right turns on departure not authorized.  
 Rwy 9: Diverse departures not authorized. CAUTION: Mountainous terrain Northwest thru Southeast.  
 TAKE-OFF OBSTACLES: Rwy 3: Tower 90' MSL, 3005' from departure end of runway, 1238' left of centerline; Trees 90' MSL, 2920' from departure end of runway, 1199' left of centerline.

CHANGES: None.

© JEPPESEN, 2001, 2010. ALL RIGHTS RESERVED.

11125

POINT MUGU NAS (NAVAL BASE VENTURA CO) (KNTD)

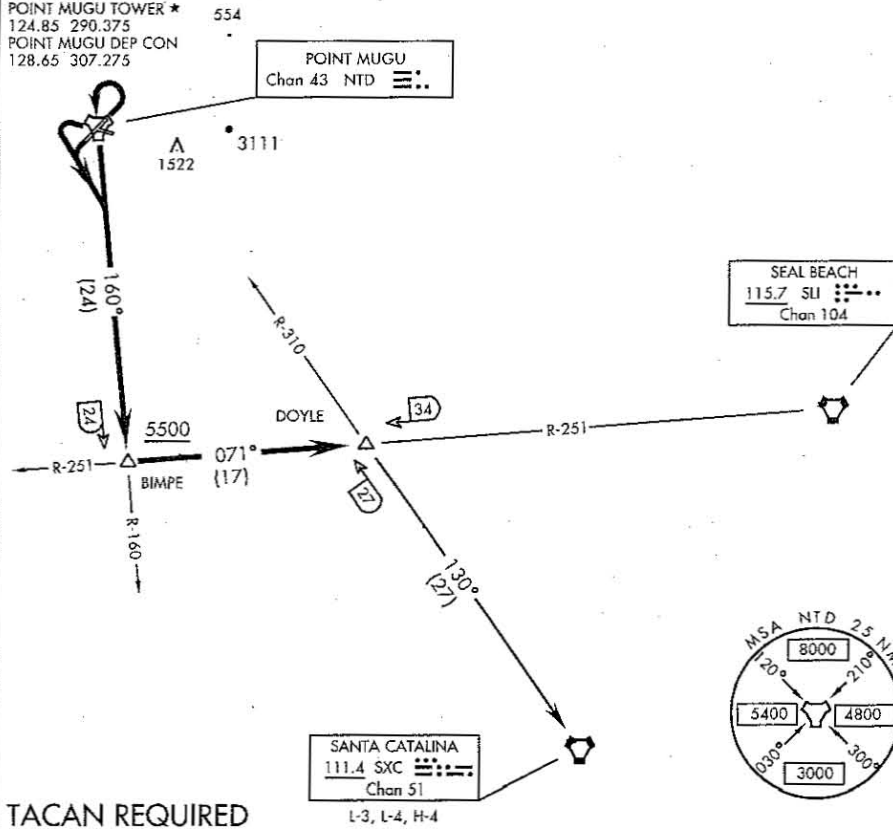
# DOYLE-SEVEN DEPARTURE (DOYLE 7 • DOYLE)

OXNARD, CALIFORNIA

ATIS \* 125.55 363.05  
 CLNC DEL  
 120.75 279.55  
 GND CON  
 121.6 360.2  
 POINT MUGU TOWER \*  
 124.85 290.375  
 POINT MUGU DEP CON  
 128.65 307.275

SHI-925 [USN]

SW-3, 30 JUN 2011 to 28 JUL 2011



SW-3, 30 JUN 2011 to 28 JUL 2011

TACAN REQUIRED

## DEPARTURE ROUTE DESCRIPTION

TAKE-OFF RWY 3: Climbing left turn within 3 DME of NTD TACAN, direct NTD, thence...

TAKE-OFF RWY 21, 27: Left turn, thence...

Intercept NTD R-160 and via NTD R-160 to BIMPE (NTD R-160/24 DME), then via SLI VORTAC R-251 to DOYLE, then via assigned routing. Cross BIMPE at or above 5500.

SANTA CATALINA TRANSITION (DOYLE 7 • SXC): DOYLE (SLI R-251/34 DME) to SANTA CATALINA VORTAC via SXC R-310. Then as filed.

# NOT FOR NAVIGATION

DOYLE-SEVEN DEPARTURE (DOYLE 7 • DOYLE)

OXNARD, CALIFORNIA

POINT MUGU NAS (NAVAL BASE VENTURA CO) (KNTD)