

Attachment 18

**Operational Factors and Human Performance
Group Chairman's Factual Report**

DCA01MA034

Weight and Balance Information

Avjet Corporation

Weight and Balance

March 24, 2001

Gulfstream III SN 303 N303GA

BOW Determination

From Syncro Aircraft Interiors 3/24/01

| Item | Weight | Arm | Moment |
|---------------------------|---------------|---------------|-------------------|
| Basic Empty Weight | 38,712 | 459.66 | 17,794,610 |
| Two Crew | 370 | 90.00 | 33,300 |
| Two Crew Bags | 60 | 175.00 | 10,500 |
| Flight Manuals | 19 | 85.00 | 1,615 |
| Jeppesens | 17 | 103.00 | 1,751 |
| Jeppesens | 19 | 152.00 | 2,888 |
| Lav Service | 24 | 528.00 | 12,672 |

Additional Items

| | | | |
|----------------------|---------------|---------------|-------------------|
| R/H Galley (Area E) | 96 | 472.00 | 45,312 |
| L/H Galley (Area F) | 142 | 472.00 | 67,024 |
| Lav Storage | 190 | 523.00 | 99,370 |
| Water | 109 | 546.00 | 59,514 |
| F/A | 185 | 117.00 | 21,645 |
| F/A Bags | 30 | 585.00 | 17,550 |
| BOW | 39,973 | 454.50 | 18,167,751 |
| BOW CG %MAC = | 40.32% | | |

Prepared by:

Kenneth R. Seals
Director of Operations

Avjet Corporation

Gulfstream III N303GA S.N. 303

Maximum Zero Fuel Weight - 44,000

Maximum Ramp Weight - 70,300

Maximum T.O. Weight - 69,700

Maximum Landing Weight - 58,500

Allowable C.G. Limits 36.6 - 43.7

Winter Weights - Use from November 1 through April 30

Passenger Seating - Tabular Data Forward To Aft Loading

| BOW | | | Weight | Arm | Moment | %MAC |
|--------|---------|---------|--------|--------|------------|--------|
| BOW | | | 39,973 | 454.50 | 18,167,751 | 40.32% |
| Seat # | Pax Wt. | Bag Wt. | ZFW | Arm | Moment | %MAC |
| 1 | 185 | 30 | 40188 | 453.65 | 18,231,366 | 39.81% |
| 2 | 185 | 30 | 40403 | 452.81 | 18,294,981 | 39.80% |
| 3 | 185 | 30 | 40618 | 452.22 | 18,368,216 | 38.94% |
| 4 | 185 | 30 | 40833 | 451.63 | 18,441,451 | 38.59% |
| 5 | 185 | 30 | 41048 | 451.27 | 18,523,566 | 38.37% |
| 6 | 185 | 30 | 41263 | 450.90 | 18,605,681 | 38.15% |
| 7 | 185 | 30 | 41478 | 450.55 | 18,687,796 | 37.93% |
| 8 | 185 | 30 | 41693 | 450.40 | 18,773,421 | 37.82% |
| 9 | 185 | 30 | 41908 | 450.25 | 18,869,046 | 37.75% |
| 10 | 185 | 30 | 42123 | 450.10 | 18,959,671 | 37.66% |
| 11 | 185 | 30 | 42338 | 450.13 | 19,057,696 | 37.68% |
| 12 | 185 | 30 | 42553 | 450.14 | 19,154,981 | 37.69% |
| 13 | 185 | 30 | 42768 | 450.28 | 19,257,446 | 37.77% |
| 14 | 185 | 30 | 42983 | 450.39 | 19,359,171 | 37.84% |
| 15 | 185 | 30 | 43198 | 450.61 | 19,465,336 | 37.97% |

March 24, 2001

Avjet Corporation

Gulfstream III N303GA S.N. 303

Maximum Zero Fuel Weight - 44,000 Maximum Ramp Weight - 70,300
 Maximum T.O. Weight - 69,700 Maximum Landing Weight - 58,500
 Allowable C.G. Limits 36.6 - 43.7

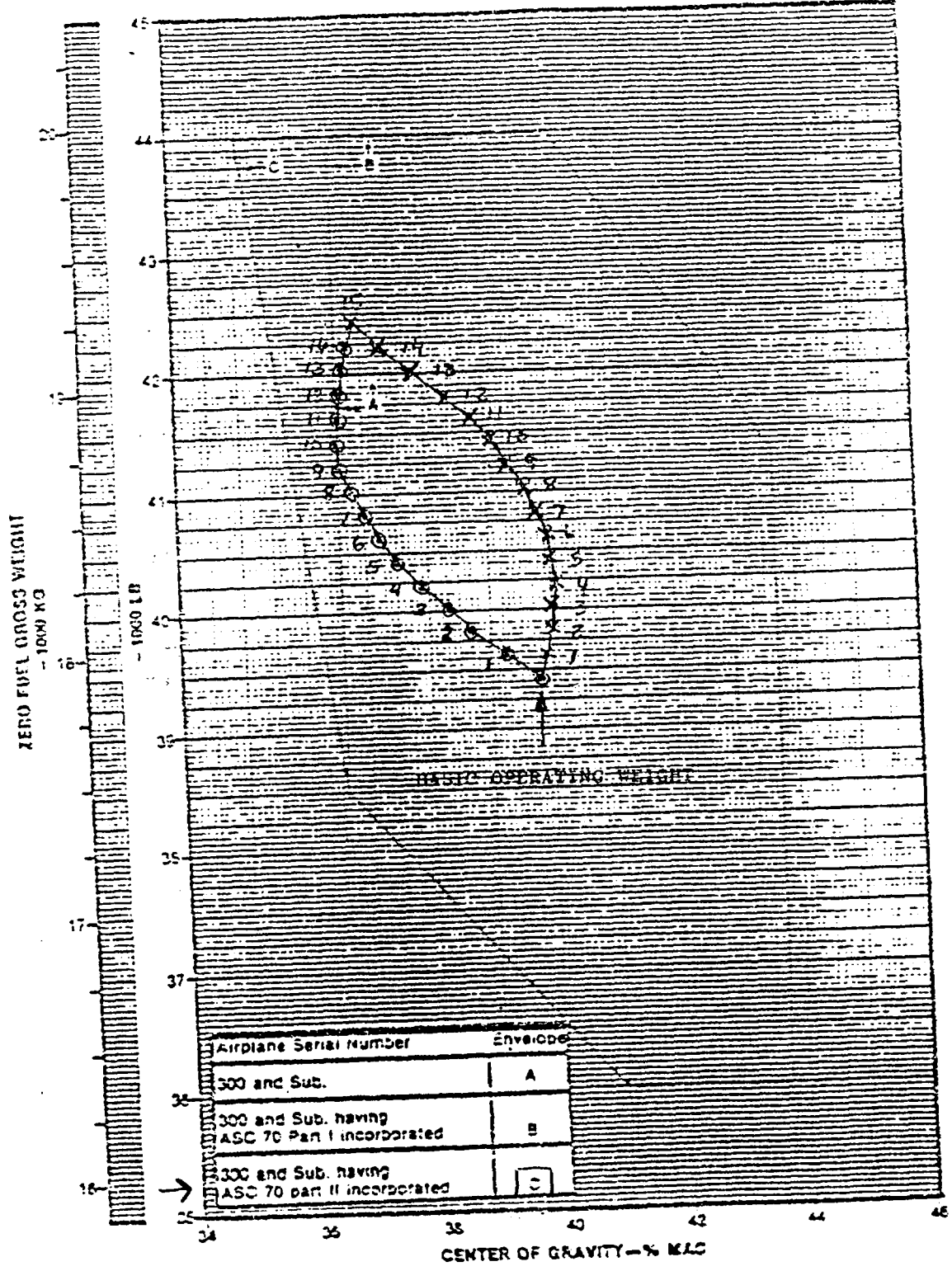
Passenger Seating Tabular Data - Aft to Forward Loading

| | | | Weight | Arm | Moment | %MAC |
|--------|---------|---------|--------|--------|------------|--------|
| BOW | | | 39,973 | 454.50 | 18,167,751 | 40.32% |
| Seat # | Pax Wt. | Bag Wt. | ZFW | Arm | Moment | %MAC |
| 15 | 185 | 30 | 40,188 | 454.71 | 18,273,916 | 40.45% |
| 14 | 185 | 30 | 40403 | 454.81 | 18,175,641 | 40.39% |
| 13 | 185 | 30 | 40188 | 454.62 | 18,270,216 | 40.39% |
| 12 | 185 | 30 | 40403 | 454.61 | 18,167,501 | 40.39% |
| 11 | 185 | 30 | 40618 | 454.61 | 18,465,526 | 40.39% |
| 10 | 185 | 30 | 40836 | 454.44 | 18,556,151 | 40.29% |
| 9 | 185 | 30 | 41048 | 454.27 | 18,646,776 | 40.18% |
| 8 | 185 | 30 | 41263 | 454.10 | 18,737,401 | 40.08% |
| 7 | 185 | 30 | 41478 | 453.72 | 18,819,516 | 39.85% |
| 6 | 185 | 30 | 41697 | 453.35 | 18,901,631 | 39.63% |
| 5 | 185 | 30 | 41908 | 452.99 | 18,983,746 | 39.41% |
| 4 | 185 | 30 | 42133 | 452.41 | 19,065,921 | 39.18% |
| 3 | 185 | 30 | 42338 | 451.85 | 19,130,216 | 38.72% |
| 2 | 185 | 30 | 42533 | 451.06 | 19,192,301 | 38.24% |
| 1 | 185 | 30 | 42768 | 450.28 | 19,257,446 | 37.77% |

March 24, 2001

ALLOWABLE ZERO FUEL GROSS WEIGHT
 CENTER OF GRAVITY ENVELOPE

⊙ Fwd to Aft
 X Aft to Fwd



WEIGHT VS. CENTER OF GRAVITY ENVELOPE

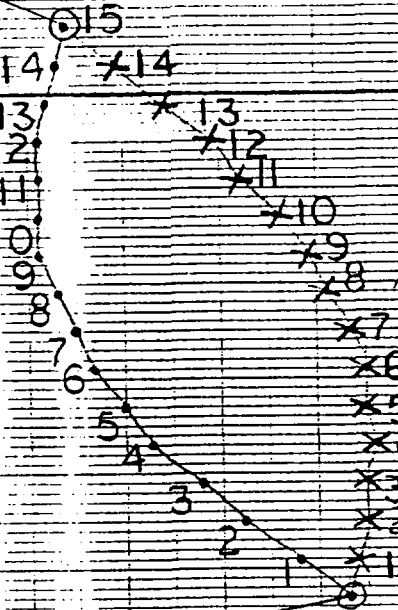
DATE: 6-02-83

PAGE: 6 OF 8

ZERO FUEL GROSS WEIGHT-1000 POUNDS

43
42
41
40
39
38
37
36
35

OPERATING WEIGHT WITH 3 CREW AND 15 PAX WITH BAGGAGE



BASIC OPERATING WEIGHT

• FWD TO AFT
x AFT TO FWD

34 35 36 37 38 39 40 41 42 43 44 45 46 47

CENTER OF GRAVITY-%MAC



Gulfstream Aerospace Corporation

WEIGHT & BALANCE
REPORT