



## **NTSB Vehicle and Scene Photos**

**Thief River Falls, MN**

**HWY17SH002**

(6 pages)



Photo 1 – An aerial photo of State Highway 59 showing first and student second school bus stops on SH59 circled in red.



Photo 2 – Green fluorescent backpack worn by pedestrian



Photo 3 - A left side view of the 2000 Thomas Built School Bus



Photo 4 - A front and left-side view of the 2000 Thomas Built School Bus



Photo 5 - rear and right-side view of the 2000 Thomas Built School Bus



Photo 6 - A left-side view of the 2005 Chrysler Town and Country Minivan



Photo 7- A right front view of the 2005 Chrysler Town and Country Minivan



Photo 8 - A left front view of the 2005 Chrysler Town and Country Minivan showing impact damage to the right headlight hood and windshield area

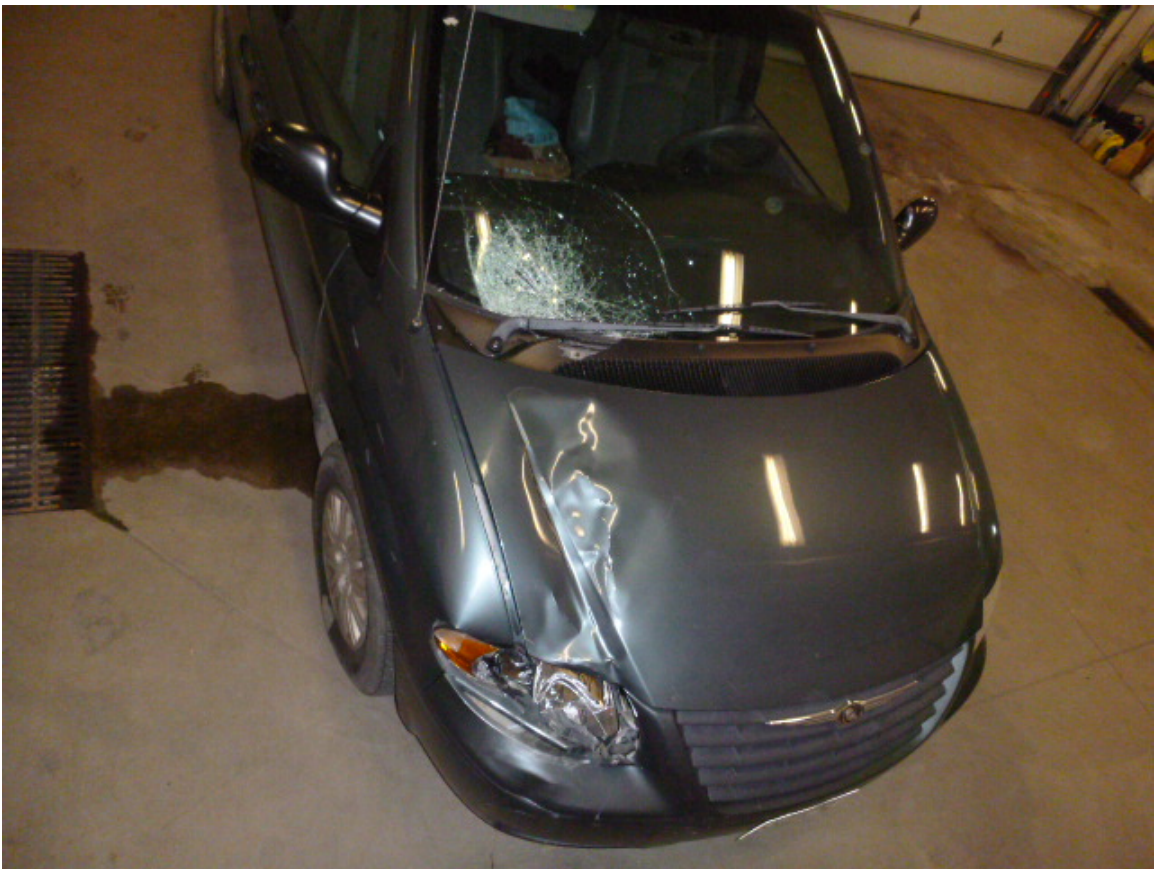


Photo 9 – An aerial view of the impact damage to the 2005 Chrysler Town and Country Minivan



Photo 10 – A closer view to the damage to the right front headlight area of the 2005 Chrysler Town and Country Minivan