



NTSB Vehicle and Scene Photos

Chattanooga, TN

HWY15FH009

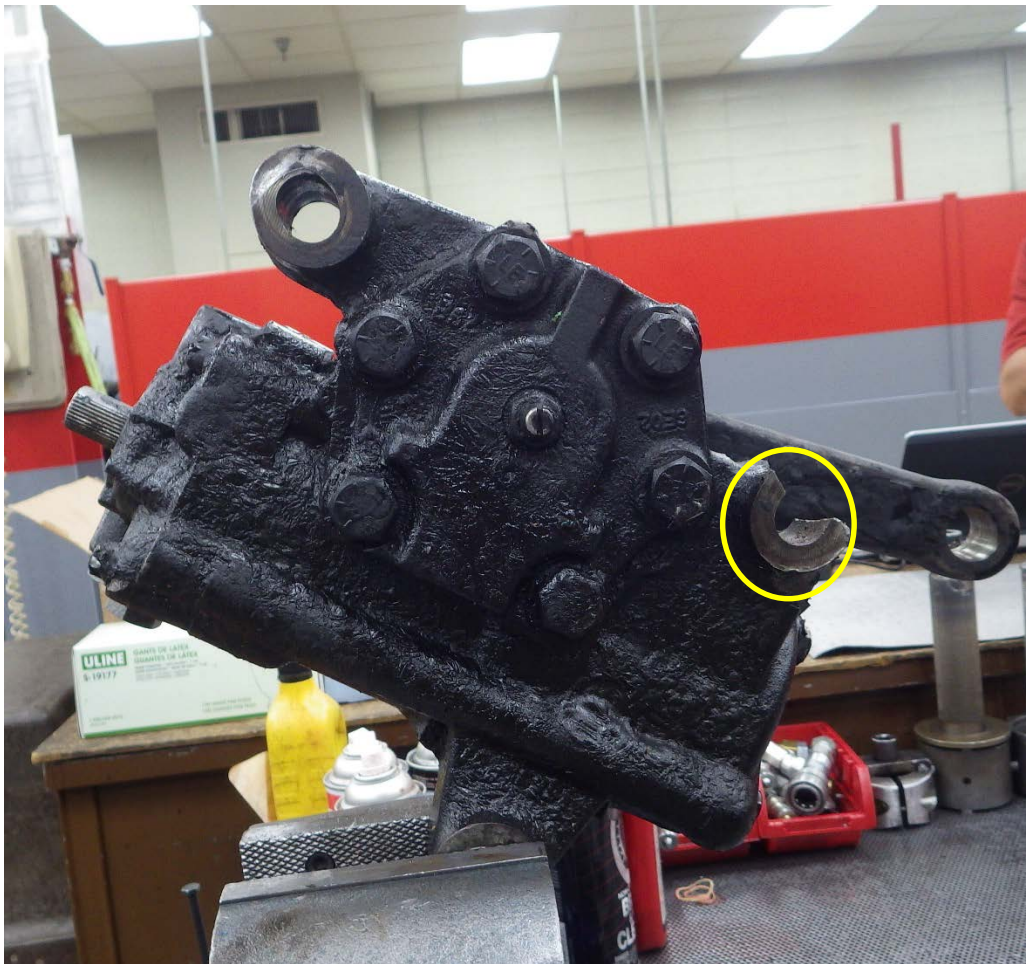
(12 pages)



Photograph 1 - Looking at the left-front corner of the 2007 Peterbilt truck-tractor, the left tire and wheel are turned to the left. The left fender and side of the hood are crushed inward, towards the engine area. The hood is held ajar from the displacement and collision damage. The left side of the bumper is displaced rearward.



Photograph 2 – Looking at the front of the 2007 Peterbilt, the bumper is displaced rearward. The radiator cowling is crushed rearward and both headlamp and turn signal assemblies are missing.



Photograph 3 – Looking at the steering gear box, you can see that the front mounting boss is broken, and the rear mounting boss is elongated.



Photograph 4 – This picture is of the cracked axle 2 right upper brake linings. The crack in the side of the rear brake lining is in excess of 1.5 inches in length and has a void in excess of 1/16 inch.



Photograph 5 – Shows the left side of the 2010 Prius. The rear passenger compartment is crush forward to the backs of the front passenger seats. The rear passenger door is torn away from the vehicle.



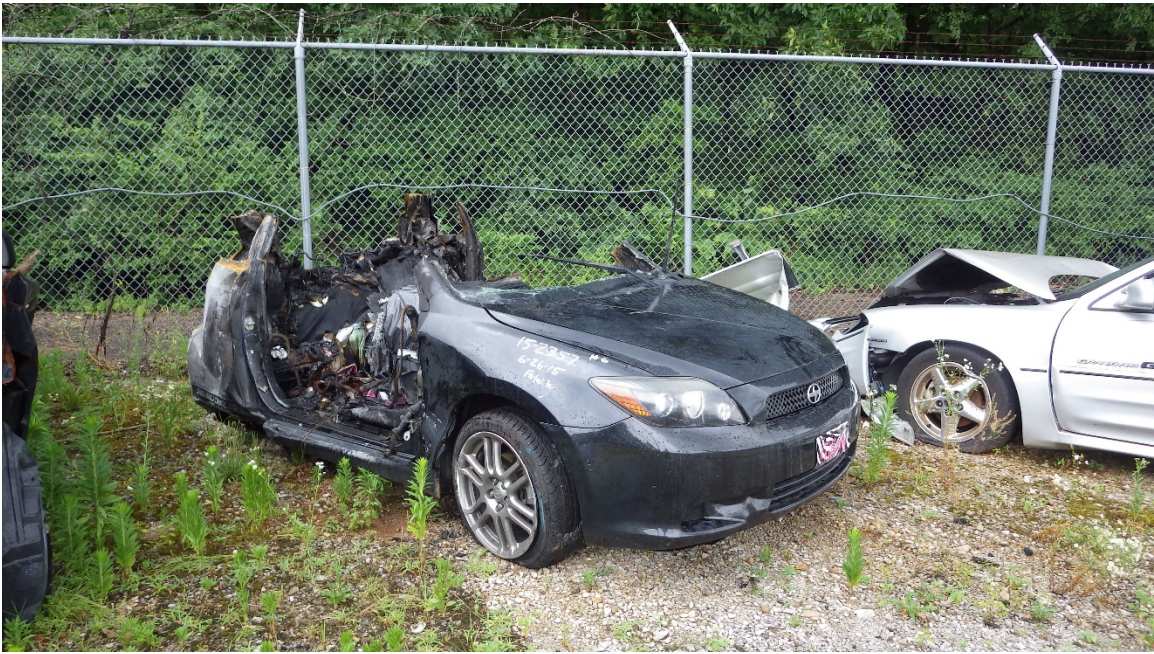
Photograph 6 – Shows the rear cargo area and the damaged battery pack. The left wheel is split.



Photograph 7 – Shows the right rear of the vehicle. The tire is separated from the wheel. The rear passenger compartment is crushed forward almost to the “B” pillar. The passenger doors are missing.



Photograph 8 – Shows the right front corner of the vehicle. The quarter panel is crushed. The edge of the bumper beam is exposed. The windshield is shattered.



Photograph 9 – This is the right front corner of the 2010 Scion looking rearward. The front of the vehicle sustained little to no damage, forward of the “A” pillars.



Photograph 10 – The left side of the Scion sustained major collision and fire damage from the rear of the front quarter panel rearward. The roof is detached from the vehicle. The rear tire and wheel are trapped inside the body of the vehicle.



Photograph 11 – The rear of the Scion shows sign of extreme heat and collision damage. The cargo area is crushed forward and the body of the vehicle has no color left and is rusted. The right rear tire is separated from the wheel has burn marks on the tread area.



Photograph 12 – The left side of the Mazda Tribute is crushed inward, upward, and is inside the rear tire and wheel. The distance between the "B" pillars is approximately 24 inches.



Photograph 13 – Shows the overall substantial damage to the right side of the Mazda Tribute. The body of the vehicle is extremely crushed and torn away from the vehicle, exposing the interior. The rear axle is broken and displaced rearward at almost a 45 degree angle from its original position.



Photograph 14 – Shows the right rear of the GMC Savana. The rear panel and rear cargo door are crushed forward and to the left. The tail lamp assembly is displaced from its mount and is hanging by its electrical wires. The rear bumper is bent forward.



Photograph 15 – looking from the left-front corner towards the right-rear corner of the F150, the left-front fender is crushed inward and covered with abrasions. The left-front wheel, tire, and disc brake assembly are separated from the spindle. The tire is deflated. The left side of the windshield contains multiple cracks towards the center. The leading edge of the driver's door is crushed rearward, the top of the window frame is bent downward, and the body of the door is crushed inward and covered with abrasions.



Photograph 16 – Looking from the right-rear corner towards the left-front corner of the F150, the cargo bed, frame rail, and bumper are crushed forward and to the left. The rear axle housing along with the right leaf-spring package, and right tire and wheel assembly, are separated from the F150. The left axle tube is broken and separated from the differential. The rear window to the passenger area is broken.



Photograph 17 - Looking at the left-rear fender well area, the cargo bed is displaced inward and forward, the left axle assembly is displaced rearward under the F150, and the leaf spring package is displaced rearward. The fuel filler neck and fuel cap are present and the plastic wheel well liner is crushed.



Photograph 18 – The front of the Chevrolet Uplander was displaced rearward across the entire front area. The hood is crushed rearward and is bowed upward. The plastic cover to the rear of the Cadillac is embedded into the engine compartment. The bumper beam is bent rearward and the plastic cover is lying on the ground.



Photograph 19 – Looking at the right-rear corner towards the left-front corner of the Chevrolet Uplander, the right-rear quarter panel and wheel well are crushed forward and downward. The rear lift gate and cargo area is crushed forward and downward, the rear window and right-side window are missing. There is red transfer across the right-side of the lift gate and along the right quarter panel. The tire is deflated.



Photograph 20 - Shows the damage to the front of the 2014 Cadillac. The right side of the plastic bumper cover and radiator cowl is damaged and missing a large portion. The left side of the hood is displaced rearward and bowed upward. The right quarter panel is crushed rearward to the approximate center of the tire.



Vehicle Photograph 21 - Shows the damage to the rear of the 2014 Cadillac. The trunk lid is crushed forward. The plastic bumper cover is missing and the rear bumper beam is bent and displaced forward. Both of the tail lamps are missing their red lens covers. The bottom of the trunk is visible beneath the bumper beam.



Photograph 22 - Shows the damage to the left rear of the Toyota Tundra. The left tail lamp assembly is displaced from its mounting location and is hanging by its electrical wires. The tailgate is damaged. The left side of the bumper is crushed forward.