

2016.04.19 12:40

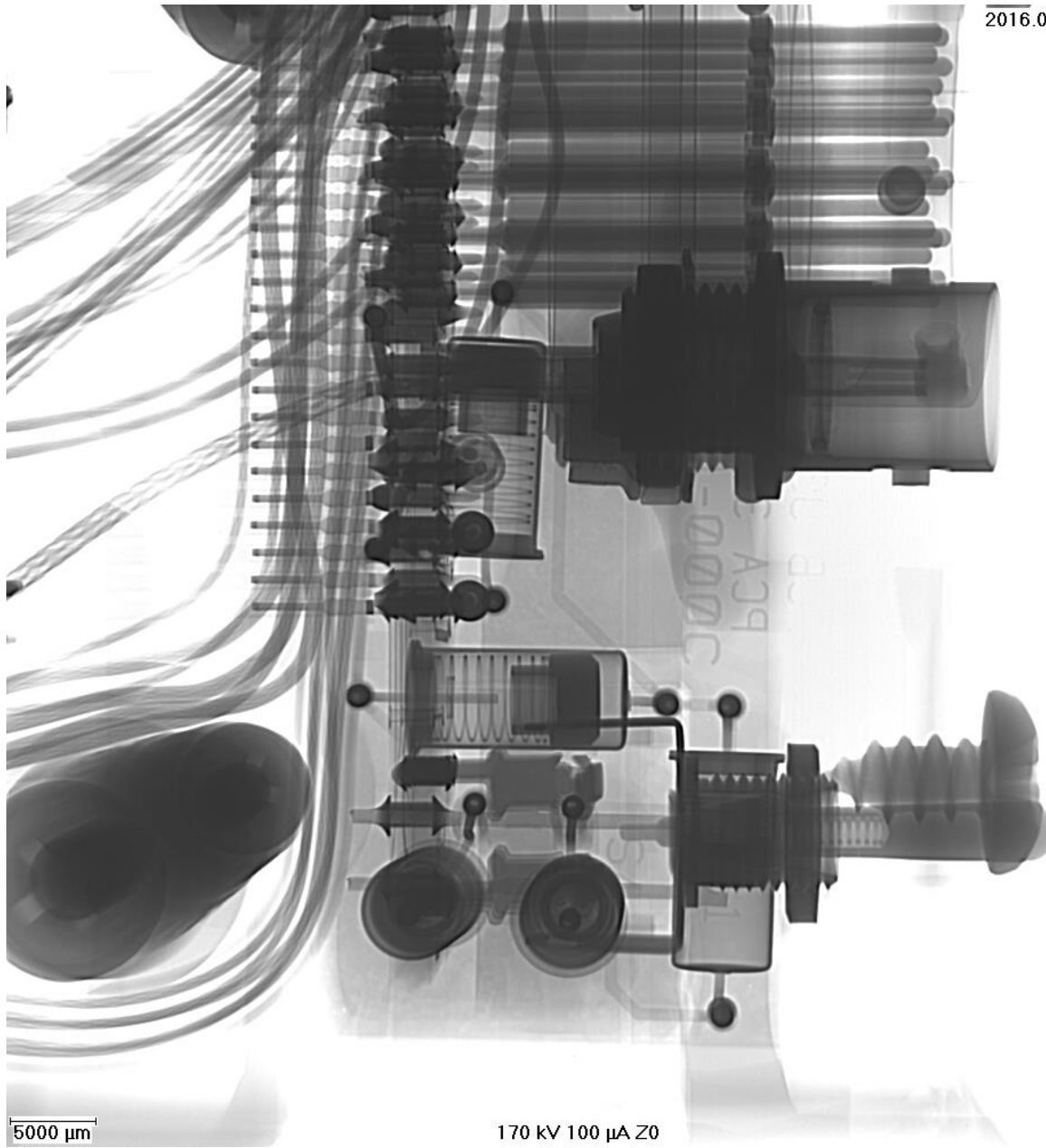


Photo 1 – ELT X-ray Image

NTSB

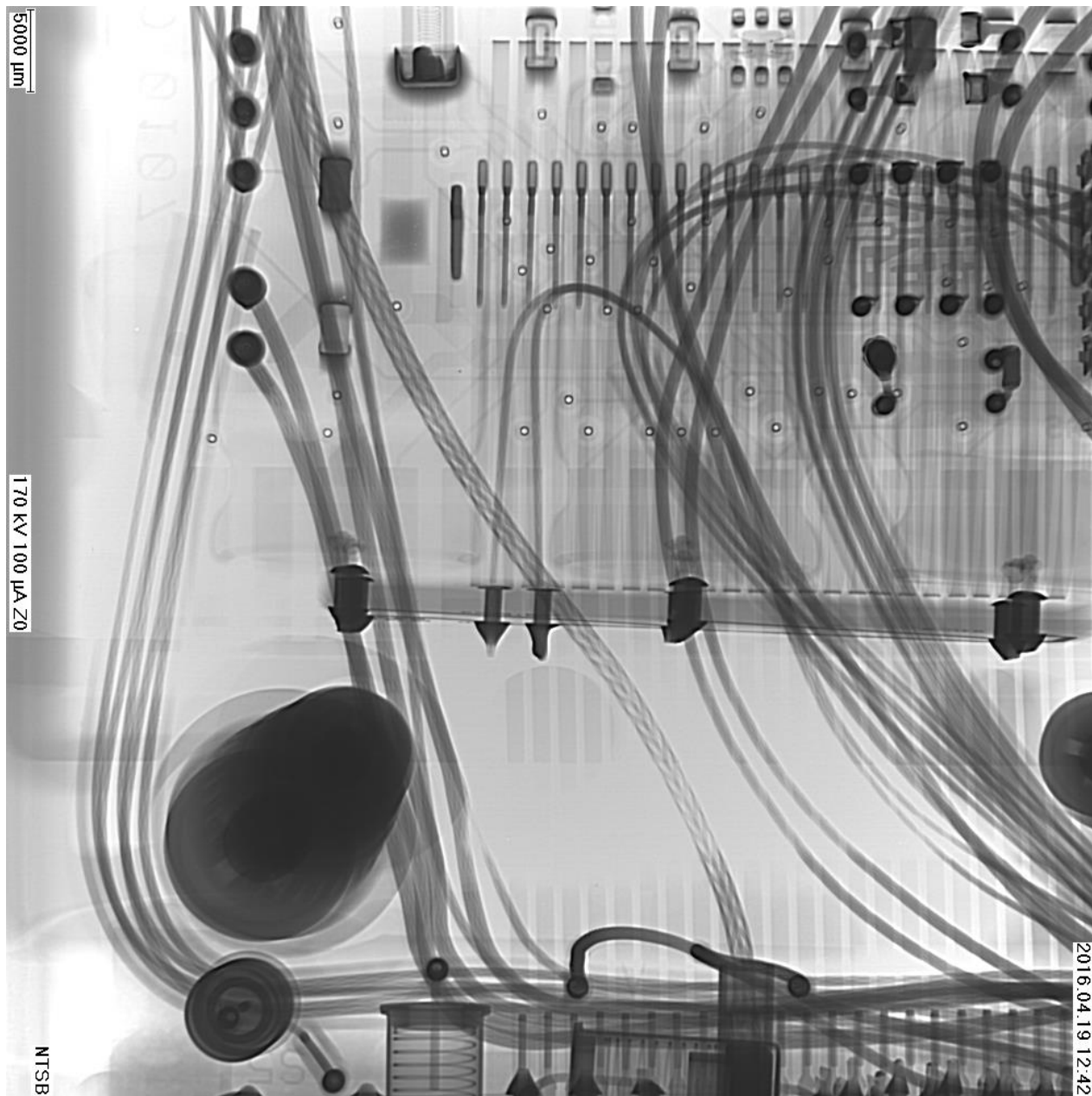


Photo 2 - ELT X-ray Image

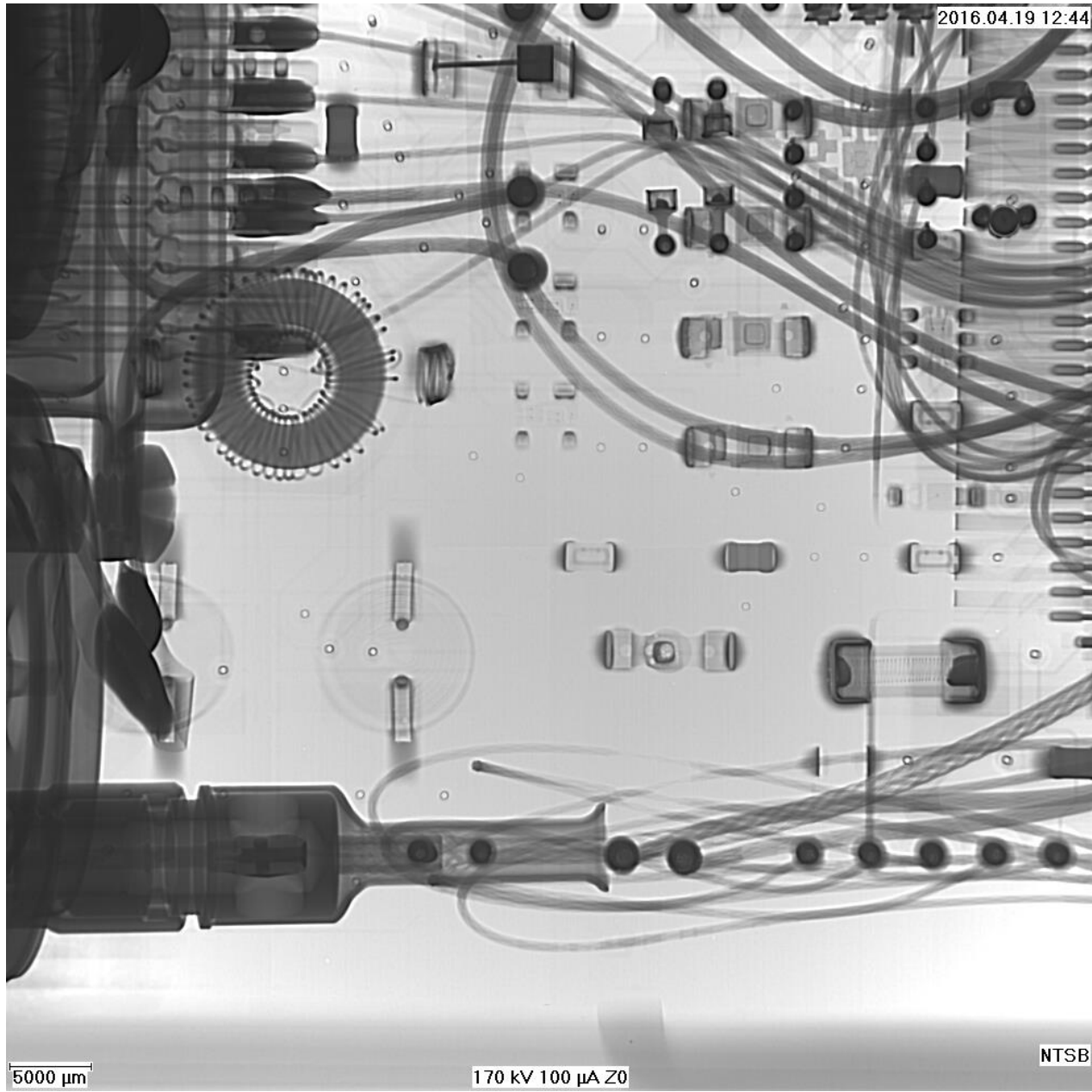


Photo 3 - ELT X-ray Image

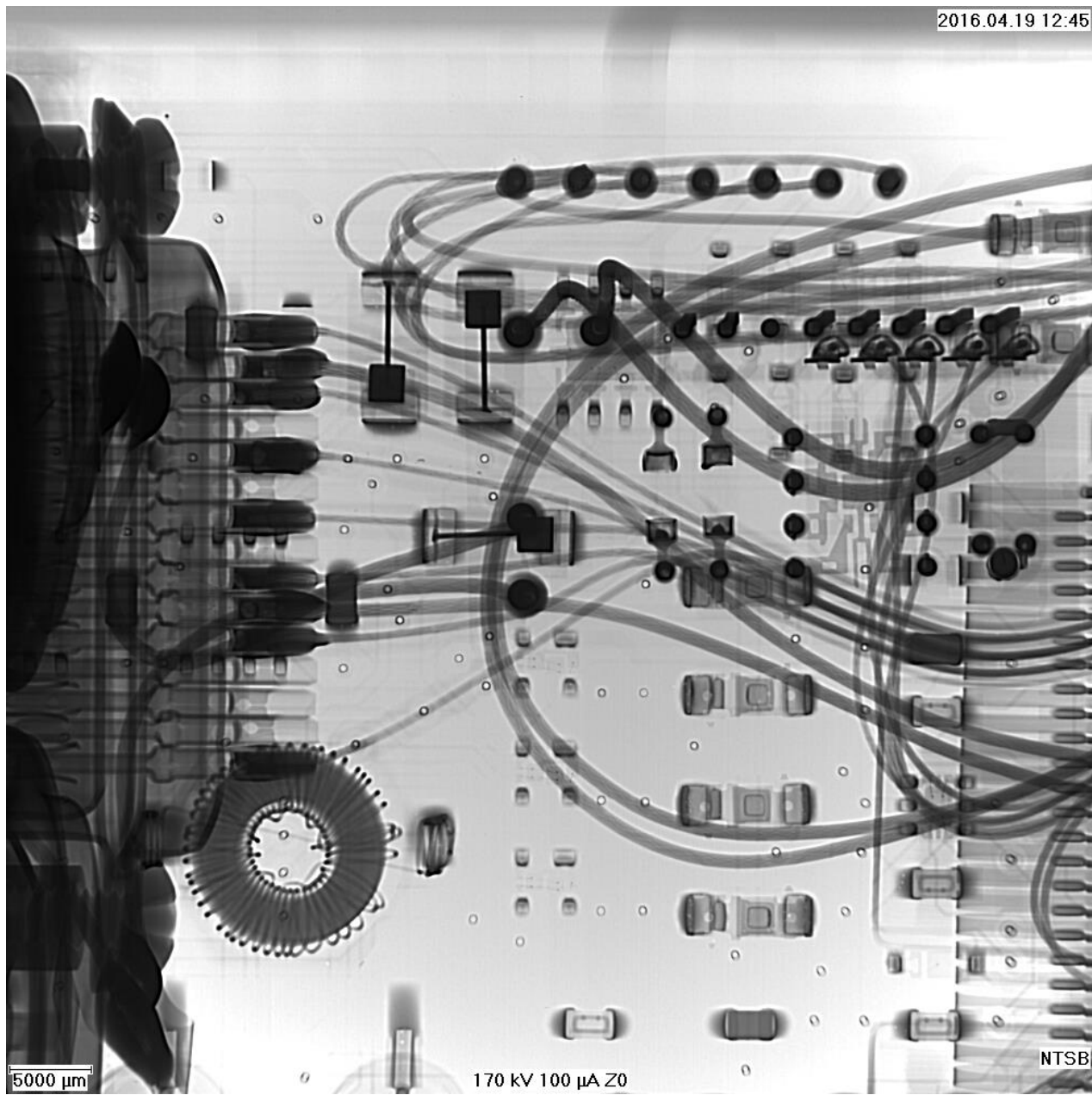


Photo 4 - ELT X-ray Image

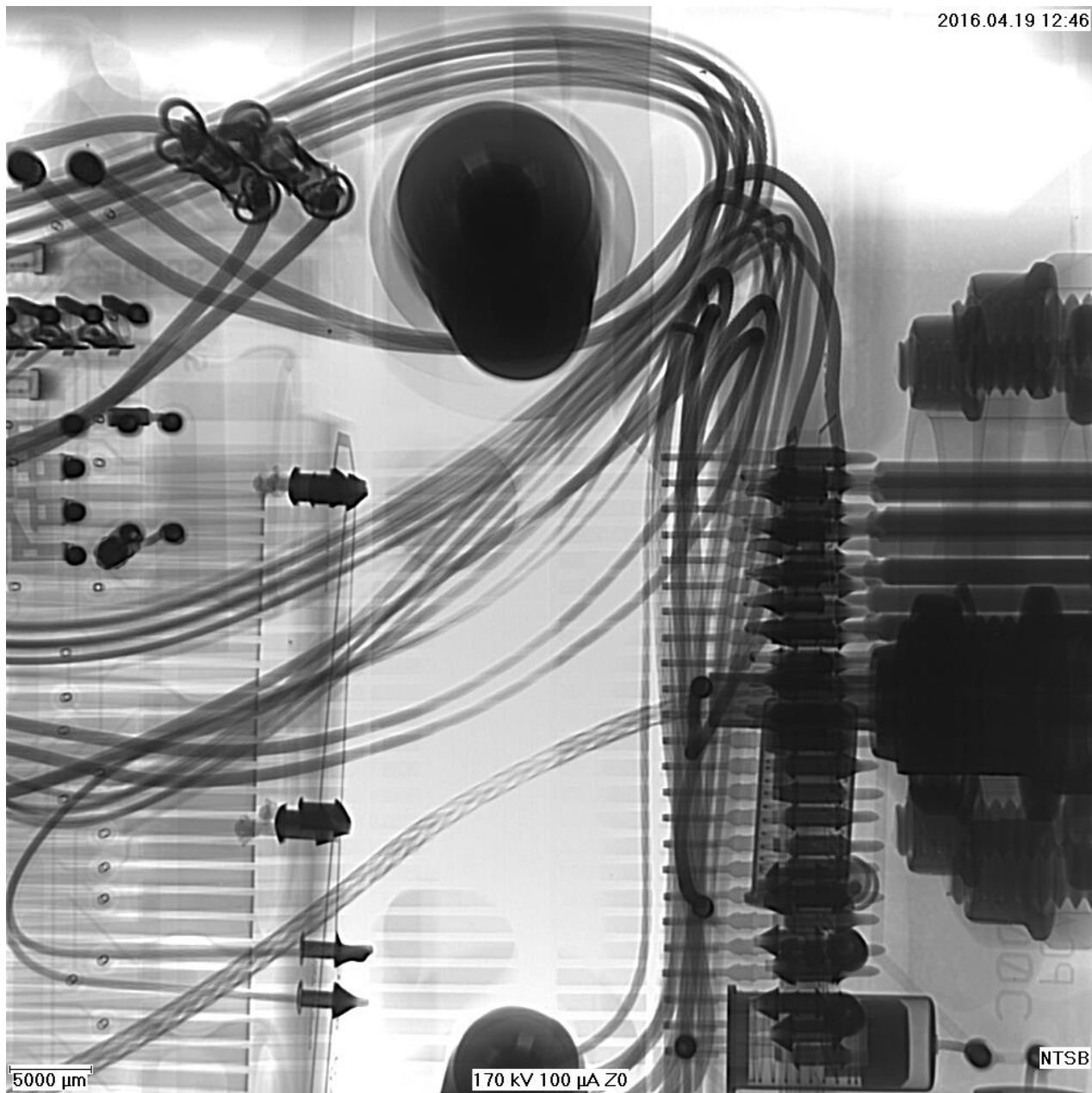
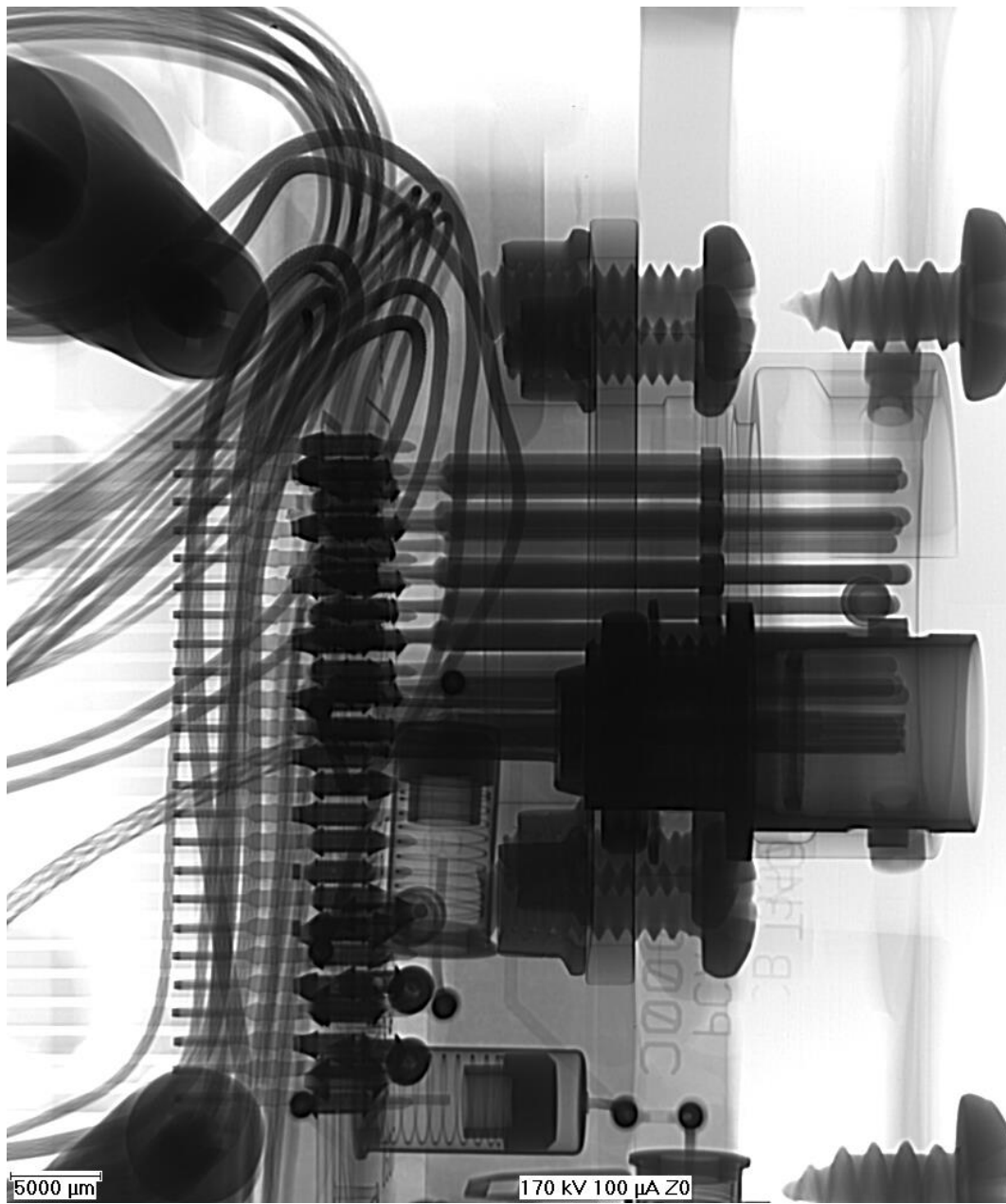


Photo 5 - ELT X-ray Image

2016.04.19 12:47



NTSB

Photo 6 - ELT X-ray Image

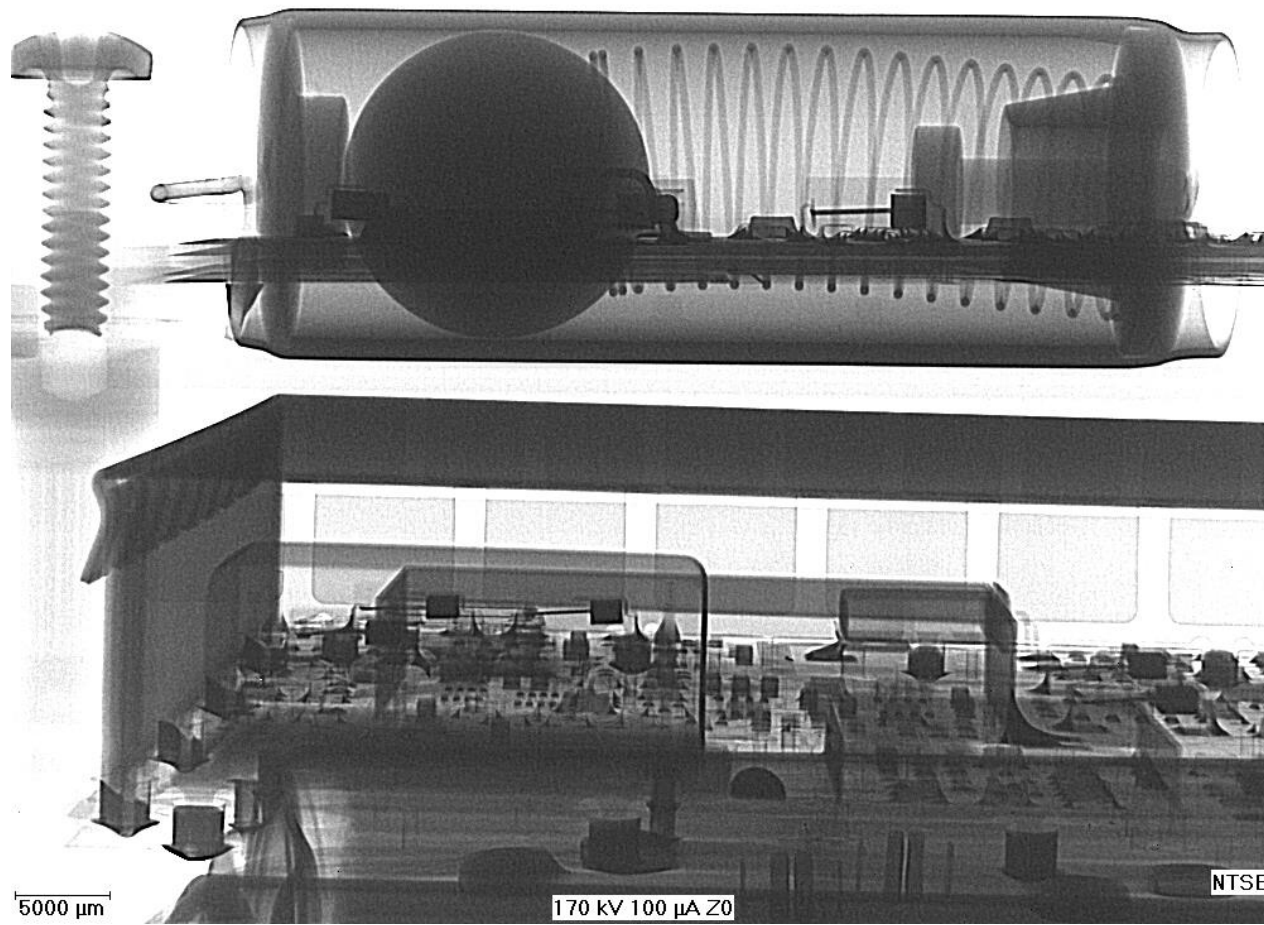


Photo 7 - ELT X-ray Image



Photo 8 - ELT X-ray Image

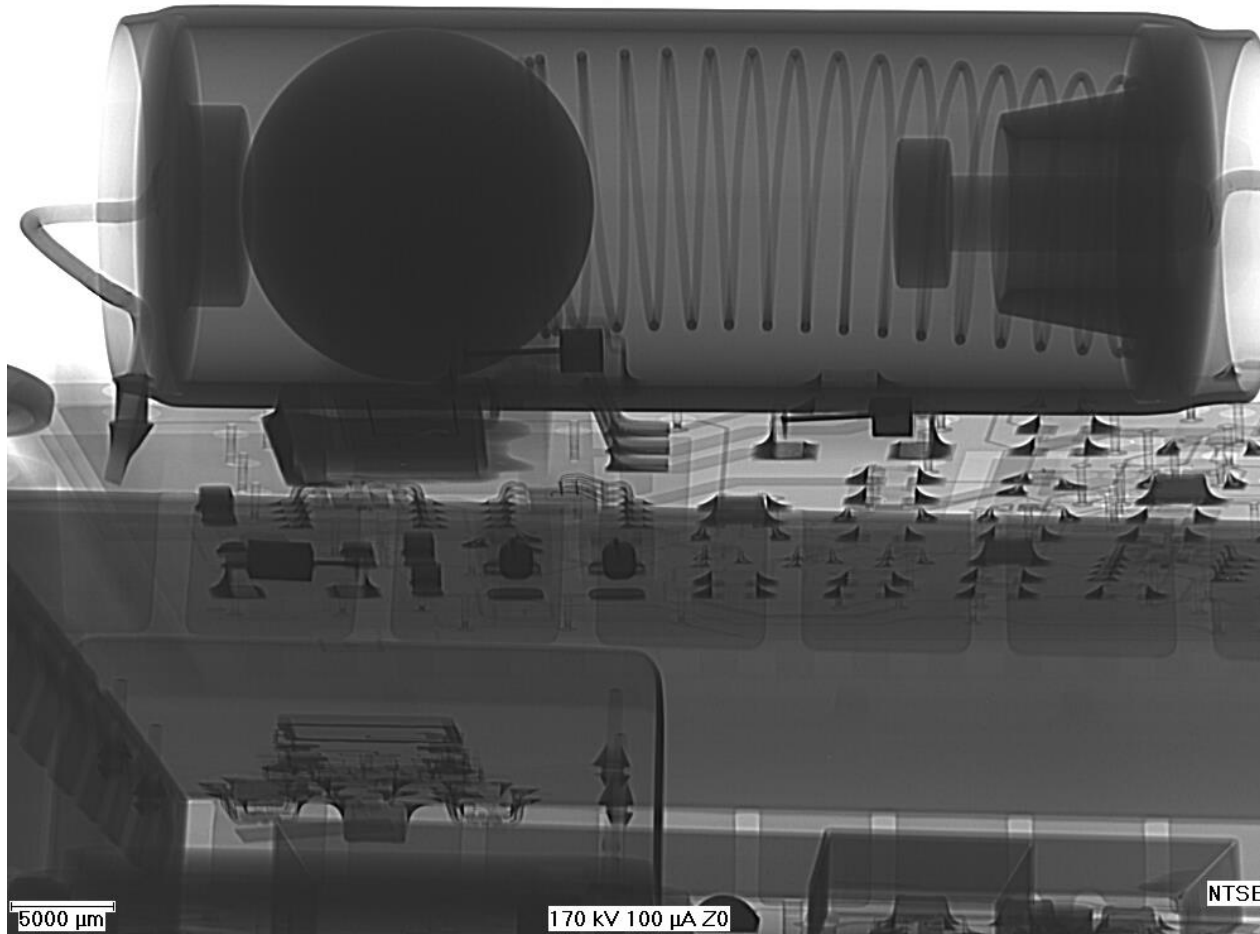
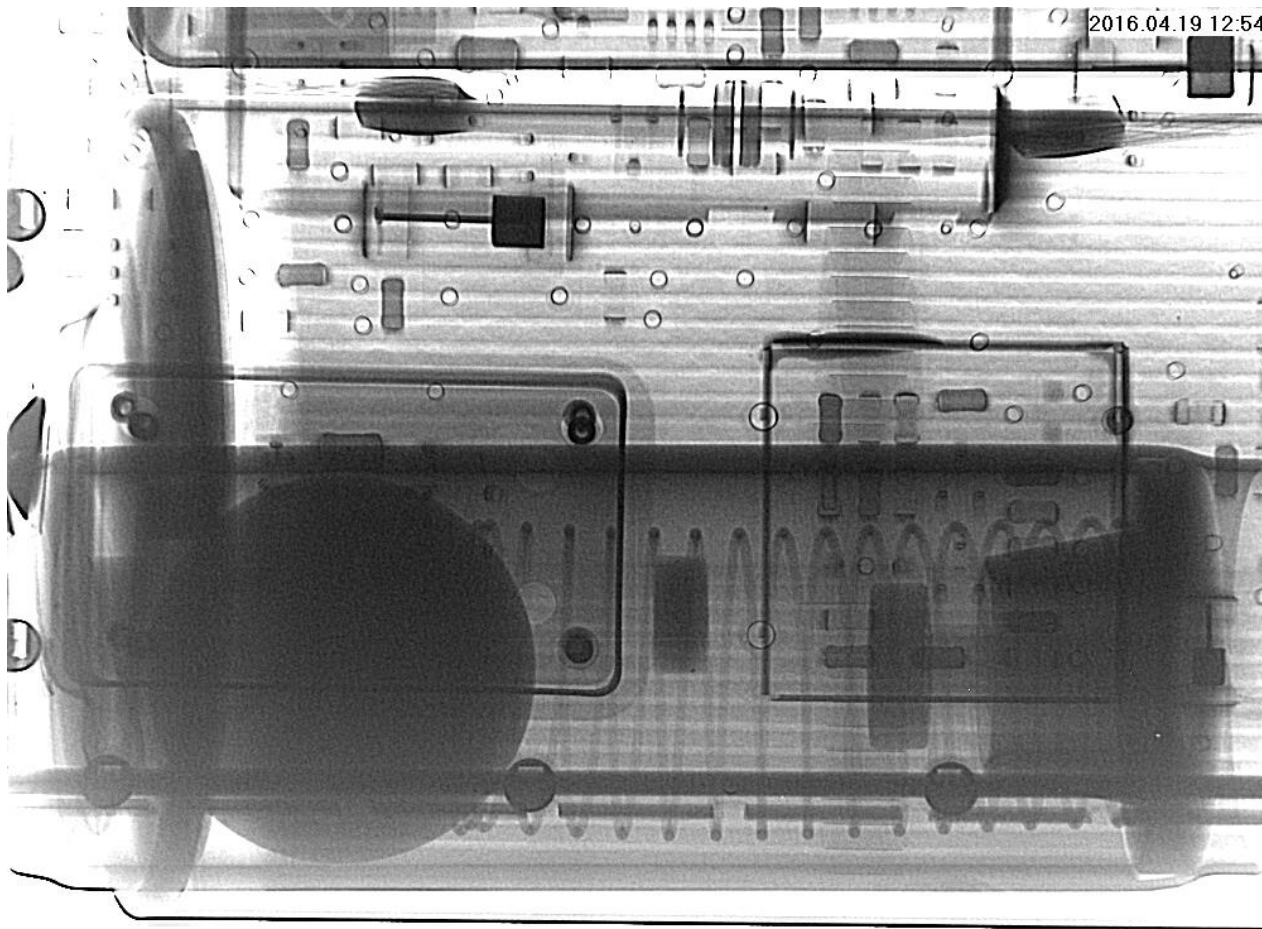


Photo 9 - ELT X-ray Image

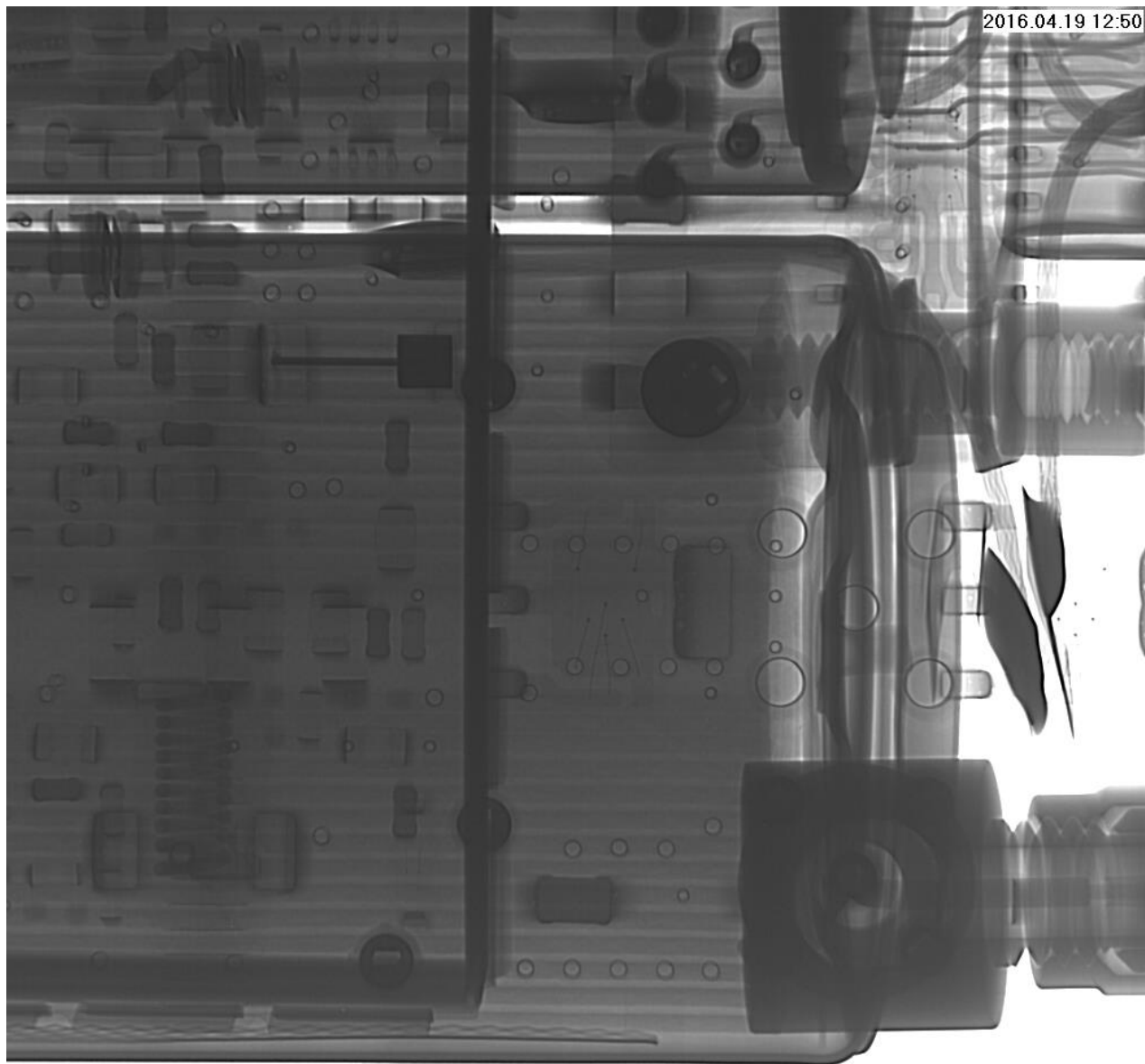


5000 μm

170 kV 100 μA Z0

NTSB

Photo 10 - ELT X-ray Image

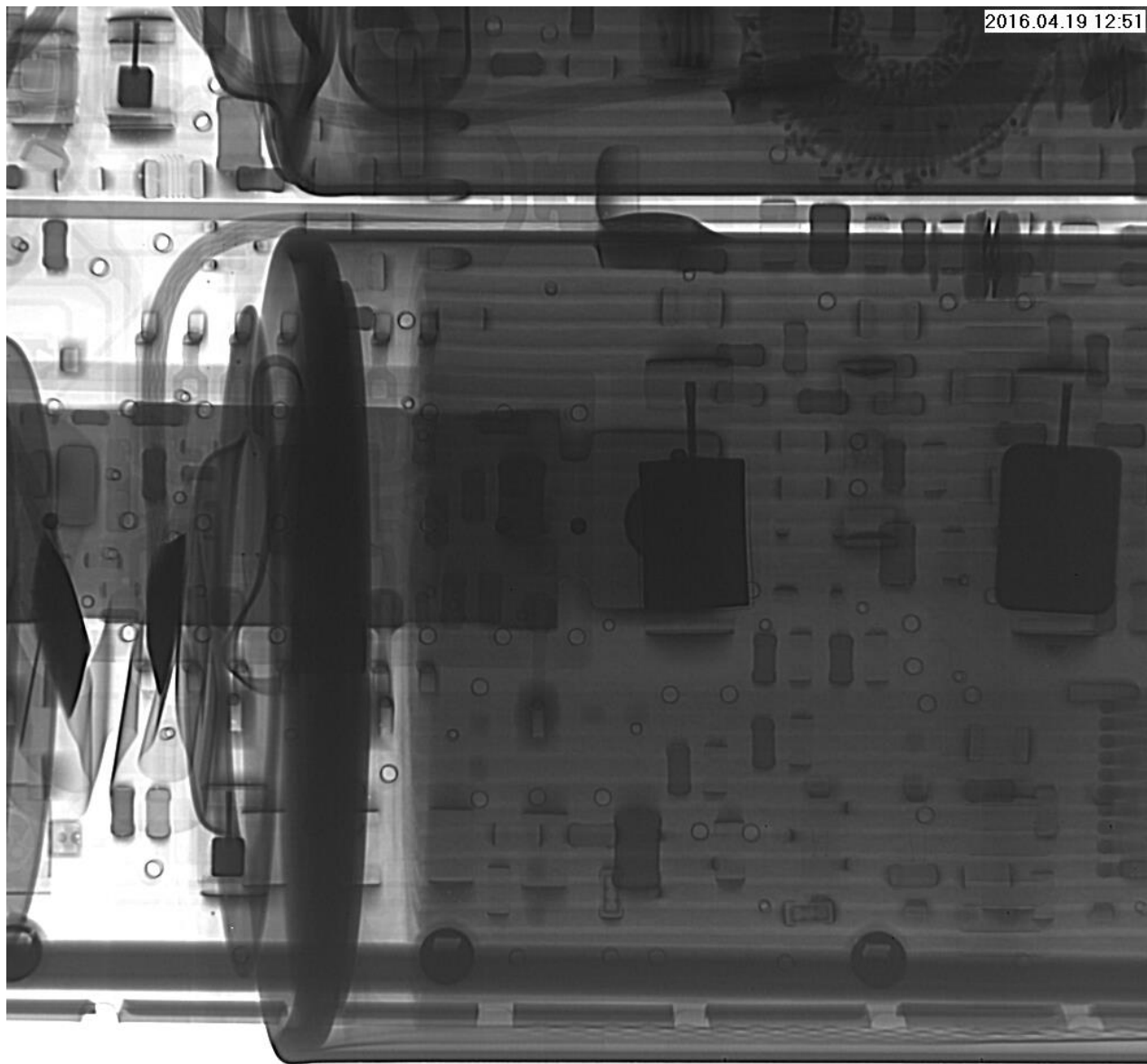


5000 μm

170 kV 100 μA Z0

NTSB

Photo 11 - ELT X-ray Image



5000 μm

170 kV 100 μA Z0

NTSB

Photo 12 - ELT X-ray Image

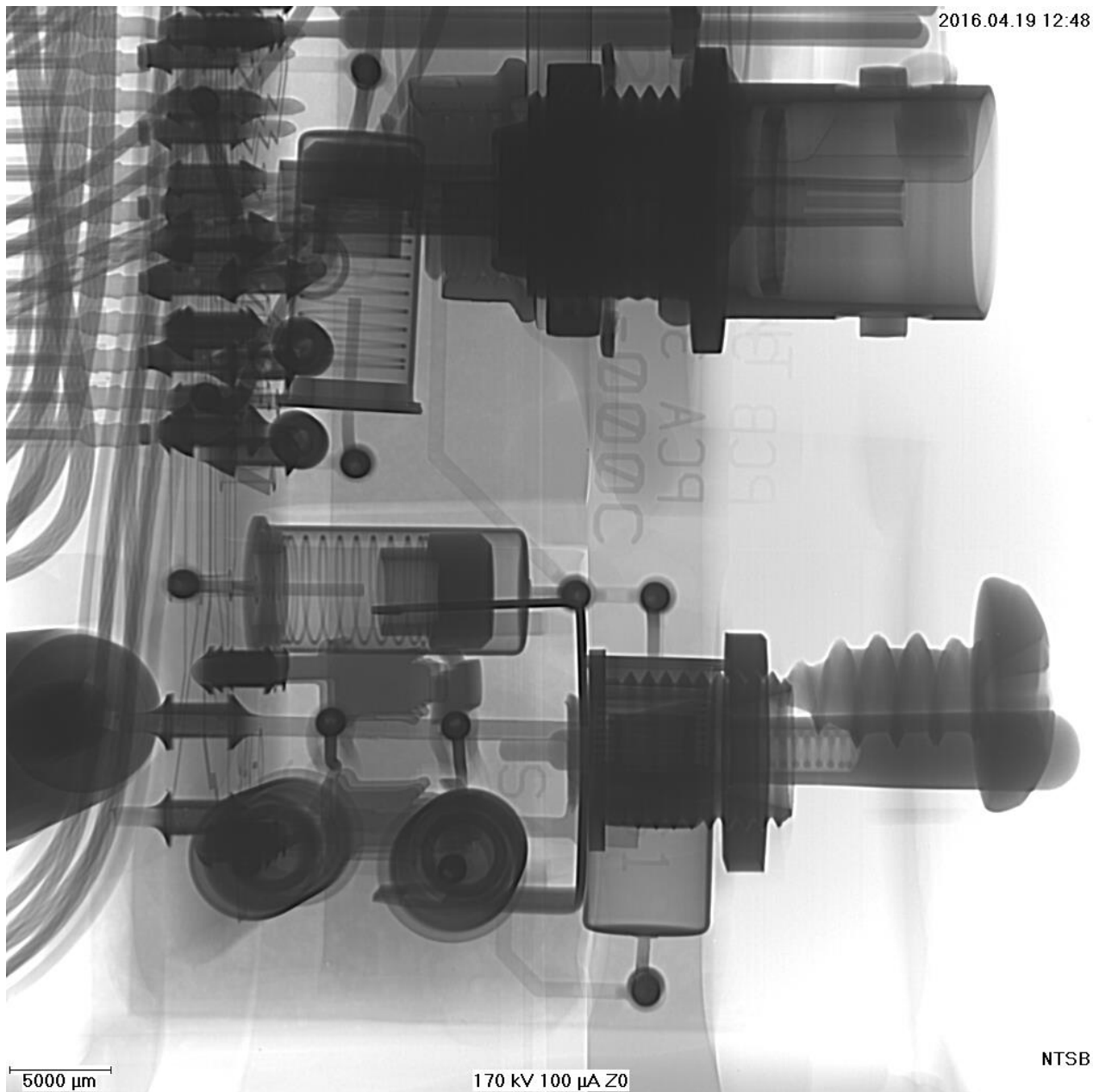


Photo 13 - ELT X-ray Image



Photo 14 - ELT



ARTS ELECTRONICS, INC.
1100 N. W. 11th St., Ft. Lauderdale, FL 33304
408 LITTLEFIELD BATTERY ROAD, FT. LAUDERDALE, FL 33309
S.A. 336282428 430333 837333 412434349
00-160C 1394 0001 DATE: JAN. 2004
01080280612204900000000022204900000

REPLACE BATTERY WITH AN LITHIUM BATTERY

FORWARD

C406-N HM
EMERGENCY LOCATOR TRANSMITTER
1500 C-128
CANADA IC: 12135-245N/12
USA FCC ID: C406-N HM
C406-N HM CAT. 01-18-2003
00-160C ENVT. CAT. 01-18-2003
PART NO. 453-5061
SOFTWARE V1365

15 DIGIT HEX ID: 2DC84 3A1CC FFBFF

IT IS IMPERATIVE THAT THE OWNER OF THIS 406 MHz ELT REGISTER THE 15 DIGIT HEX ID WITH NOAA/SAR/SAT OPERATIONS DIVISION, 805P3, FEDERAL BUILDING 4 WASHINGTON, DC 20533

WARNING
FOR PROPER OPERATION, THE ELT MUST BE STORED IN THE OFF POSITION.

INSTRUCTIONS
TO ARM ASSEMBLY SWITCHES THE POWER SW. TO ON POSITION. ALL CONTACTS MUST BE PUSHED TO ON POSITION.
FOR NORMAL OPERATION LEAVE THE SWITCH IN THE OFF POSITION.
TO TEST THE OPERATION OF THE ELT, PUSH THE TEST SWITCH TO ON POSITION. THE TEST SWITCH MUST BE PUSHED TO ON POSITION. THE TEST SWITCH MUST BE PUSHED TO OFF POSITION.
ENTER AIRCRAFT OPERABLES INC. 400 BFA 7500 2004 4000

Photo 15 - ELT



Photo 16 - ELT



Photo 17 - ELT



Photo 18 - ELT