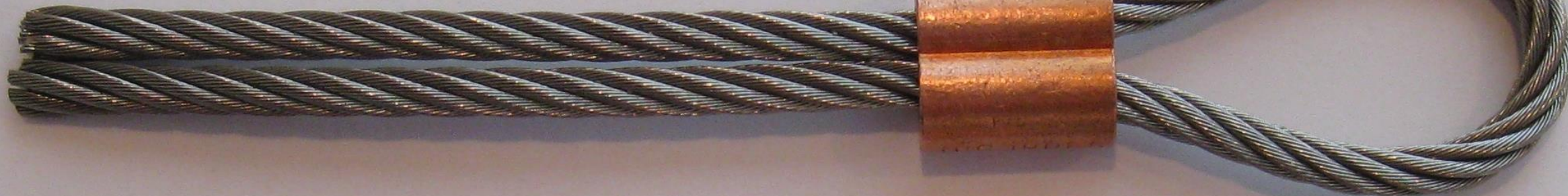


Post Accident Test

5/32 Cable

Copper Oval Sleeve

No. 18-4-P



Post Accident Test

5/32 Cable

Compressed with  
5/32 Swage Tool

Compressed with  
3/16 Swage Tool



1/32 INCHES

1

2

1/16

3

4

5





## Post Accident Testing

Compressed with  
5/32 Swage Tool

0.383-0.386 inch  
Max allowed 0.395"

Compressed with  
3/16 Swage Tool

0.442-0.452 inch  
Max allowed 0.475"





Left Ski, Aft Cable, Gear Leg Attachment

0.440-0.446 inch



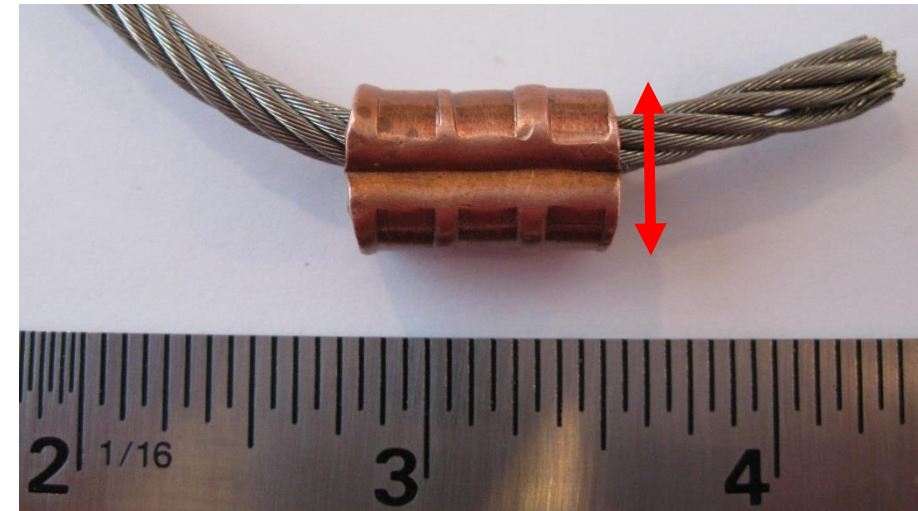
Post Accident Test  
5/32 Cable, 18-4-P Sleeve,  
compressed with  
3/16 Swage Tool



0.442-0.452 inch

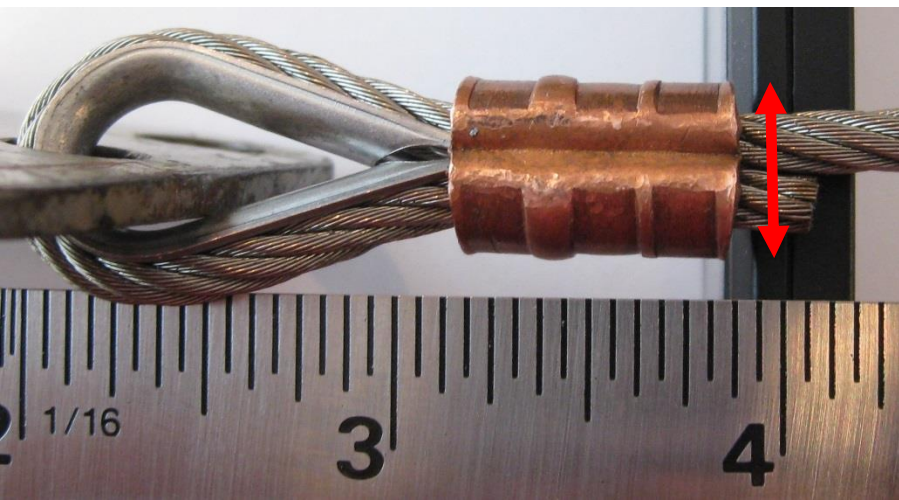
Right Ski, Aft Cable, Ski Attachment

0.442-0.446 inch



Left Ski, Forward Cable, Gear Leg Attachment

0.442-0.446 inch



Post Accident Test  
5/32 Cable, 18-4-P Sleeve,  
compressed with  
5/32 Swage Tool



0.383-0.386 inch

Right Ski, Aft Cable, Gear Leg Attachment

0.440-0.446 inch

