

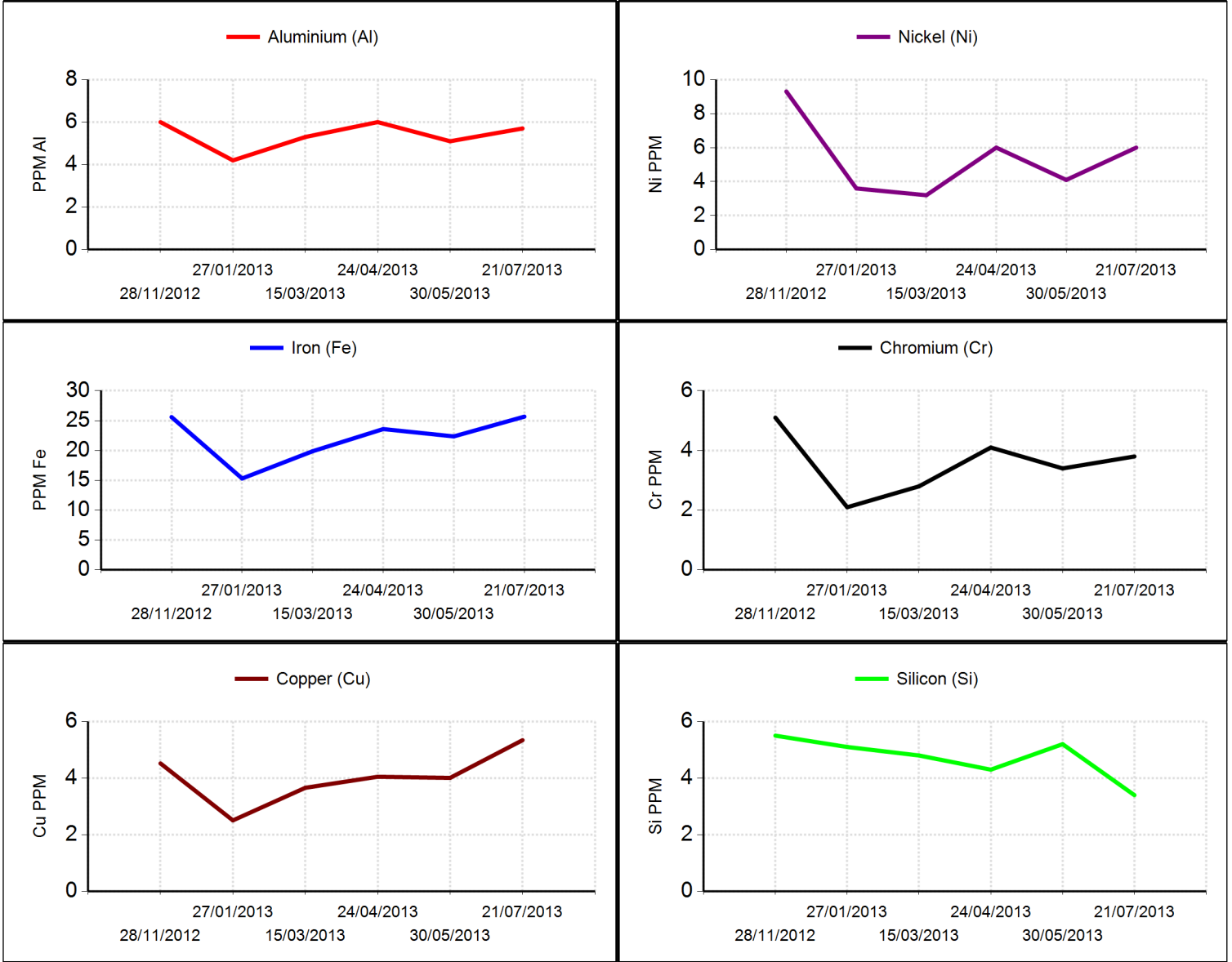
<b>Customer Name:</b>	PROPAIRE INC	<b>Tail Number:</b>	N225CD	<b>Comp Serial N°:</b>	685766
<b>Address:</b>	7516 Suffolk Ave St Louis MO 63119 USA	<b>Aircraft Make:</b>	Cirrus	<b>Comp Name:</b>	Single Engine
<b>Phone:</b>	3149735564	<b>Aircraft Model:</b>	SR 22	<b>Comp Make:</b>	Continental
<b>Fax:</b>		<b>Serial N°:</b>		<b>Comp Model:</b>	IO-550N
		<b>UIN:</b>	01DE999		

Sample N°	44150073480	44150070143	44150067453	44150065151	44150062872	44150059254
<b>Date Samples</b>	21-Jul-13	30-May-13	24-Apr-13	15-Mar-13	27-Jan-13	28-Nov-12
<b>Date Tested</b>	26-Jul-13	06-Jun-13	24-Apr-13	20-Mar-13	06-Feb-13	05-Dec-12
<b>Oil Brand</b>	Shell	Shell	Shell	Shell	Shell	Shell
<b>Oil Type</b>	Aeroshell W	Aeroshell W	Aeroshell W	Aeroshell W	Aeroshell W	Aeroshell W
<b>Oil Grade</b>	SAE 15W50	SAE 15W50	SAE 15W50	SAE 15W50	SAE 15W50	SAE 15W50
<b>Oil Hrs</b>	43	33	26	31	34	63
<b>Oil Added</b>	7.0	5.0	4.0	4.0	4.0	
<b>Hrs Since New</b>	2067	2024	1993	1967	1936	1902
<b>Rebuild Hrs</b>						
<b>Metals (ppm)</b>						
Aluminium (Al)	6	5	6	5	4	6
Iron (Fe)	25.67	22.36	23.59	19.88	15.31	25.60
Copper (Cu)	5.34	4.01	4.05	3.66	2.51	4.52
Nickel (Ni)	6	4	6	3	4	9
Chromium (Cr)	4	3	4	3	2	5
Silver (Ag)	<1	<1	<1	<1	<1	<1
<b>Contaminants (ppm)</b>						
Silicon (Si)	3	5	4	5	5	6

**LEGEND**

									
Severe	Abnormal	Caution	Normal						

Sample N°	Diagnosis/Recommendations
44150073480	All values appear normal.
44150070143	All values appear normal.
44150067453	All values appear normal.
44150065151	All values appear normal.
44150062872	All values appear normal.
44150059254	All values appear normal.



*Since services are based on samples and information supplied by others, and since corrective actions, if any, are necessarily taken by others, these services are rendered without any warranty or liability of any kind beyond the actual amount paid to ALS Laboratory group for the services. Reported recommendations are based on interpretations of the generated test results and historical data. Certain test results appearing in this report may have been tested at other ALS laboratories within the Tribology divisional network.*

Propaire Inc  
 Attn: Jerry Rettinger  
 [REDACTED]  
 St Louis MO 63119  
 USA

**TEST METHODS:**  
 Acid Number: ASTM D974/D664  
 Metals by AA Spectro: ASTM D6595  
 Viscosity: ASTM D445 / D7279  
 Water by Crackle: ASTM E203 Mod / In House