

| | | |
|--|------------------------|---|
| WAAS CH 72923 W25A | APP CRS 248° | Rwy Idg THRE 2790 Apt Elev 2803 |
|--|------------------------|---|

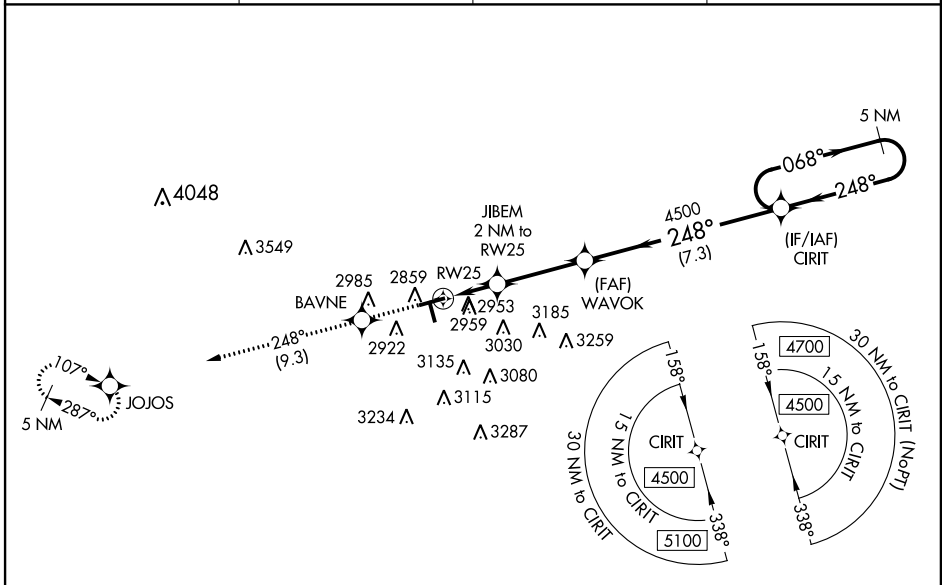
RNAV (GPS) RWY 25

MIDLAND AIRPARK (MIDD)

⚠ Baro-VNAV NA when using Midland Intl altimeter setting. For uncompensated Baro-VNAV systems, LNAV/VNAV NA below -20°C (-4°F) or above 26°C (78°F).
⚠ When local altimeter setting not received, use Midland Intl altimeter setting and increase all DA 28 feet, all MDA 40 feet, increase LNAV/VNAV all Cats and LNAV Cat C/D visibility 1/8 mile. When VGSi inop, Straight-in/Circling Rwy 25 procedure NA at night. DME/DME RNP-0.3 NA. Visibility reduction by helicopters NA.

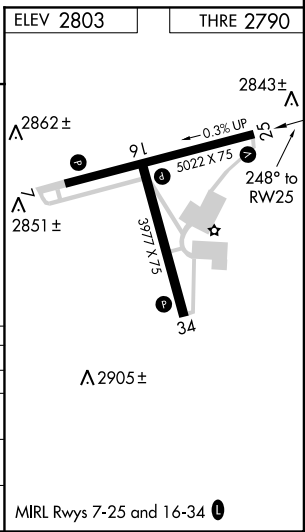
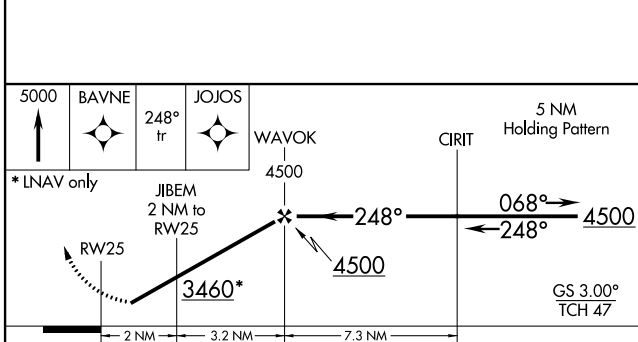
MISSED APPROACH: Climb to 5000 direct BAVNE and on 248° track to JOJOS and hold.

| | | | |
|--------------------------|---|--------------------------|---------------------------------|
| AWOS-3 118.125 | MIDLAND APP CON * 124.6 290.4 | CLNC DEL 121.8 | UNICOM 122.7 (CTAF) 0 |
|--------------------------|---|--------------------------|---------------------------------|



SC-3, 25 JUL 2013 to 22 AUG 2013

SC-3, 25 JUL 2013 to 22 AUG 2013



| CATEGORY | A | B | C | D |
|--------------|----------------------------|-------------|------------|-----------------------|
| LPV DA | 3071-1 281 (300-1) | | | |
| LNAV/VNAV DA | 3134-1 1/8 344 (400-1 1/8) | | | |
| LNAV MDA | 3220-1 | 430 (500-1) | 3220-1 1/4 | 430 (500-1 1/4) |
| CIRCLING | 3320-1 | 517 (600-1) | 3320-1 1/2 | 3700-3 897 (900-3) |