

AIRPORT DIAGRAM

ATIS
127.15
APPLETON TOWER*
119.6
GND CON
121.7

D

NON MOVEMENT AREA



ELEV 878

44° 16.0' N

JANUARY 2010
ANNUAL RATE OF CHANGE
0.1° W

EC-3, 12 JAN 2012 to 09 FEB 2012

FIELD
ELEV
918

44° 15.5' N

TERMINAL

TWR
961

FIRE
STATION

119.3°

A2

A3

A4

A5

A6

A7

A8

A9

A10

A11

A12

A13

A14

A15

A16

A17

A18

A19

A20

A21

A22

A23

A24

A25

A26

A27

A28

A29

A30

A31

A32

6501 X 150

8002 X 150

029.3°

ELEV 888

B1

B2

B3

B4

B5

B6

B7

B8

B9

B10

B11

B12

B13

CAUTION: BE ALERT TO RUNWAY CROSSING CLEARANCES.
READBACK OF ALL RUNWAY HOLDING INSTRUCTIONS IS REQUIRED.

RWY 03-21
S-75, D-160, 2S-175, 2D-320
RWY 12-30
S-75, D-160, 2S-175, 2D-320

88° 31.5' W

88° 31.0' W

88° 30.5' W

EC-3, 12 JAN 2012 to 09 FEB 2012

AIRPORT DIAGRAM

WAAS CH 42517 W30A	APP CRS 298°	Rwy Idg TDZE Apt Elev	6501 875 918
--	------------------------	-----------------------------	---

RNAV (GPS) RWY 30

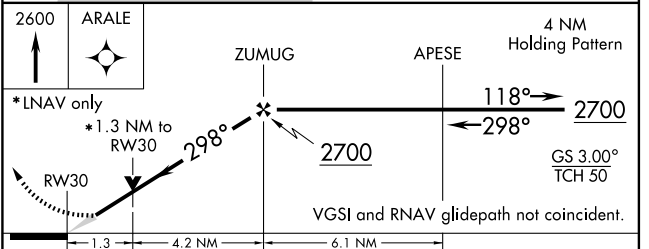
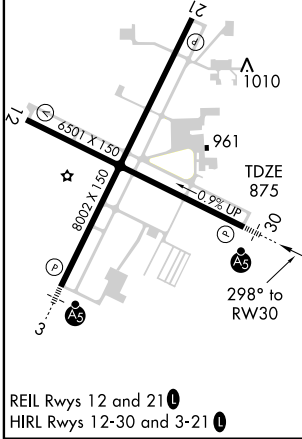
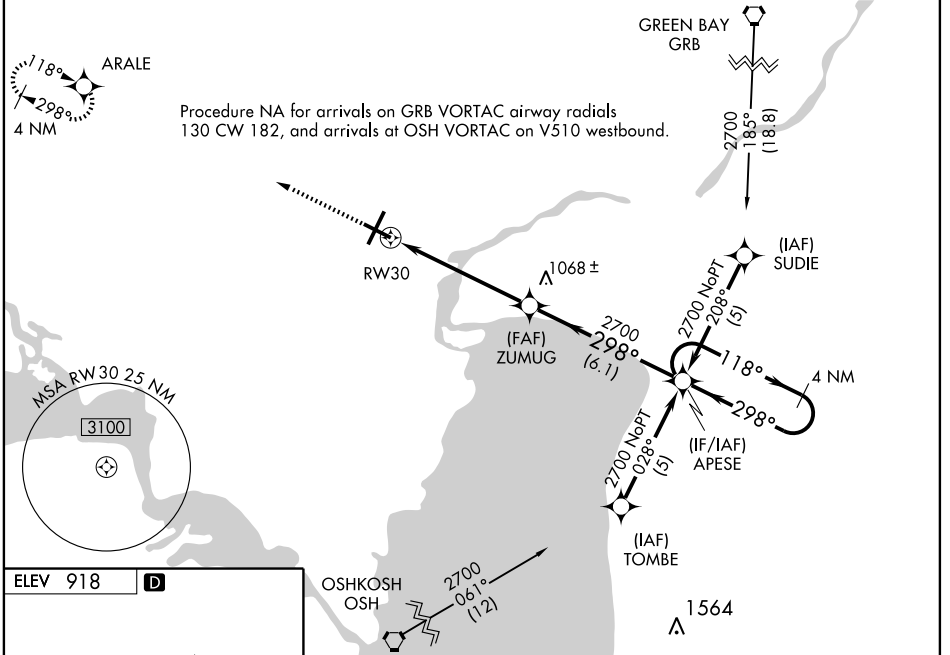
APPLETON/OUTAGAMIE COUNTY RGNL (ATW)

⚠ For uncompensated Baro-VNAV systems, LNAV/VNAV NA below -16°C (4°F) or above 47°C (116°F). DME/DME RNP-0.3 NA. For inoperative MALS/R when using Austin Straubel Intl altimeter setting, increase LPV all Cats visibility to 1 mile. When local altimeter not received, use Austin Straubel Intl altimeter setting and increase all DA 81 feet and all MDA 100 feet. Increase LNAV/VNAV all Cats and LNAV Cat C/D visibility 1/4 mile. Baro-VNAV and VDP NA when using Austin Straubel Intl altimeter setting.



MISSED APPROACH:
Climb to 2600 direct ARALE WP hold.

ATIS 127.15	GREEN BAY APP CON* 126.3 338.2	APPLETON TOWER* 119.6 (CTAF) 0	GND CON 121.7	UNICOM 122.95
-----------------------	--	---	-------------------------	-------------------------



CATEGORY	A	B	C	D
LPV DA		1075-1/2	200 (200-1/2)	
LNAV/VNAV DA		1310-1	435 (400-1)	
LNAV MDA	1320-1/2	445 (500-1/2)	1320-3/4 445 (500-3/4)	1320-1 445 (500-1)
CIRCLING	1340-1 422 (500-1)	1380-1 462 (500-1)	1380-1 1/2 462 (500-1 1/2)	1480-2 562 (600-2)

EC-3, 12 JAN 2012 to 09 FEB 2012

EC-3, 12 JAN 2012 to 09 FEB 2012