

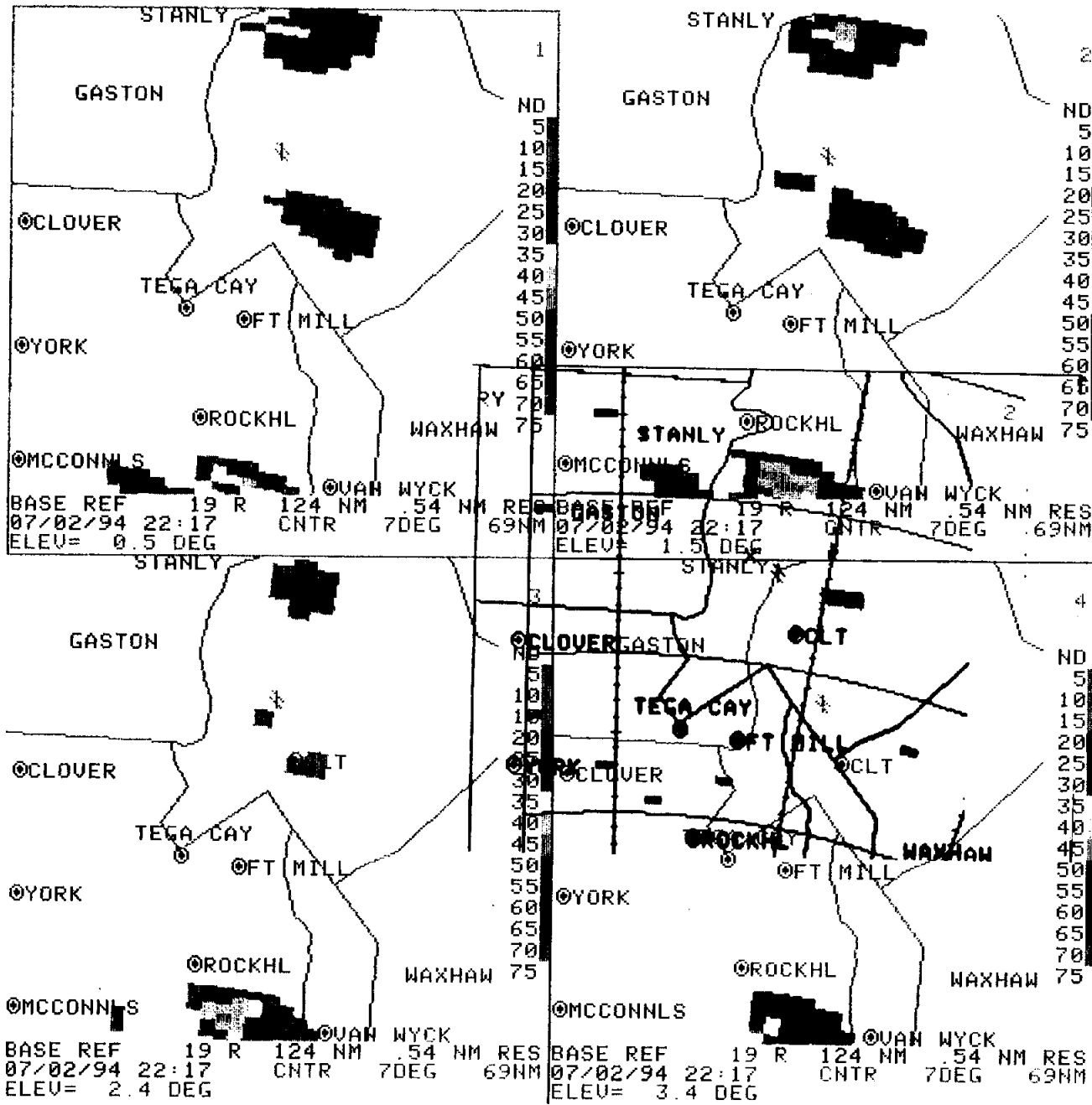
Docket No. SA-509

Exhibit No. 5-D

**NATIONAL TRANSPORTATION SAFETY BOARD**

**Washington D.C.**

**WSR-88D Data From Columbia, South Carolina**



07/06/94 14:09

2 QUAD 1 MAG=8X  
 RDA:KCAE 33/56/56N  
 344 FT 81/07/08W  
 MODE A / 21  
 MAX= 54 DBZ  
 OUL:HI M

25 QUAD 2 MAG=8X  
 RDA:KCAE 33/56/56N  
 344 FT 81/07/08W  
 MODE A / 21  
 MAX= 56 DBZ  
 OUL:HI M

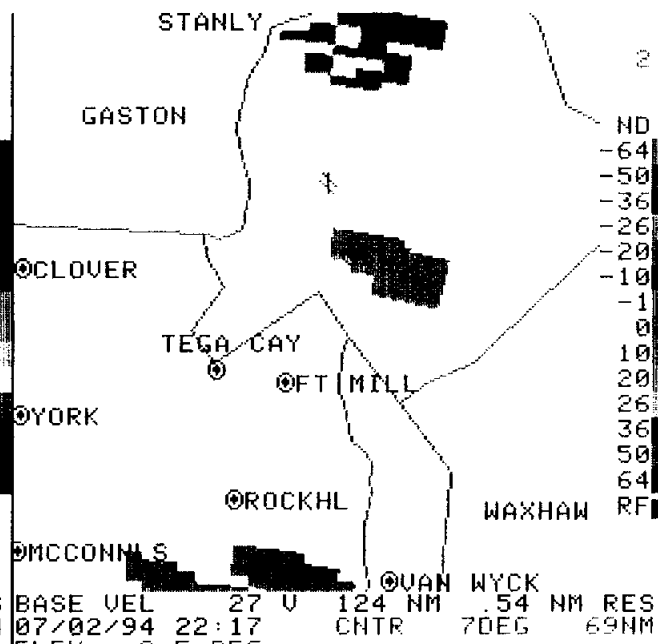
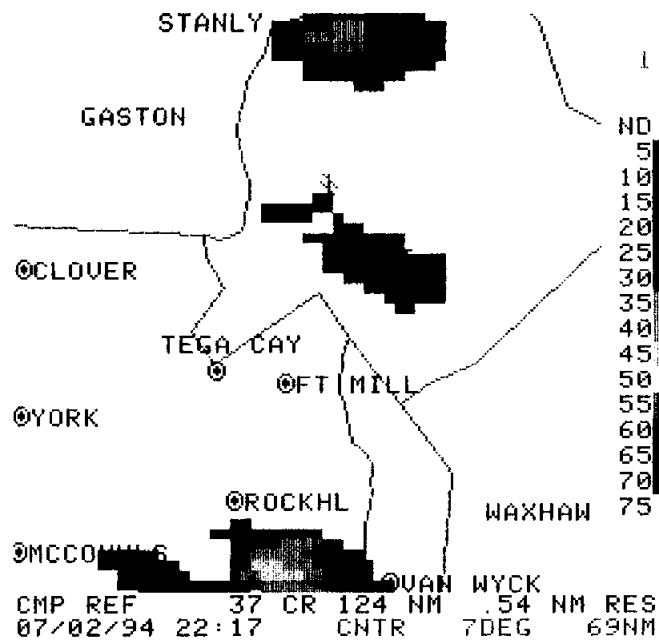
70 QUAD 3 MAG=8X  
 RDA:KCAE 33/56/56N  
 344 FT 81/07/08W  
 MODE A / 21  
 MAX= 54 DBZ  
 OUL:HI M

4 QUAD 4 MAG=8X  
 RDA:KCAE 33/56/56N  
 344 FT 81/07/08W  
 MODE A / 21  
 MAX= 57 DBZ  
 OUL:HI M

35 A/R (RDA) 7 DEG  
 40 7491FT 69 NM  
 45 015 U 1222 R

HARDCOPY  
 HARDCOPY REQUEST  
 ACCEPTED

*(Handwritten mark)*

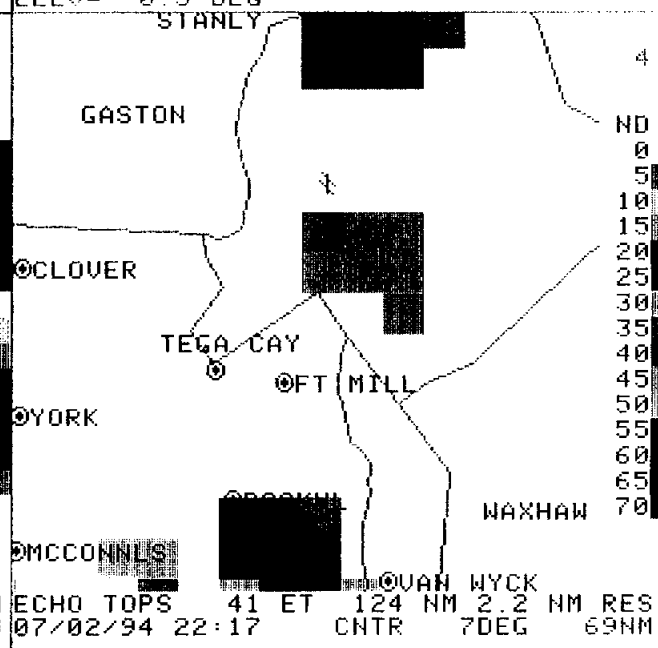
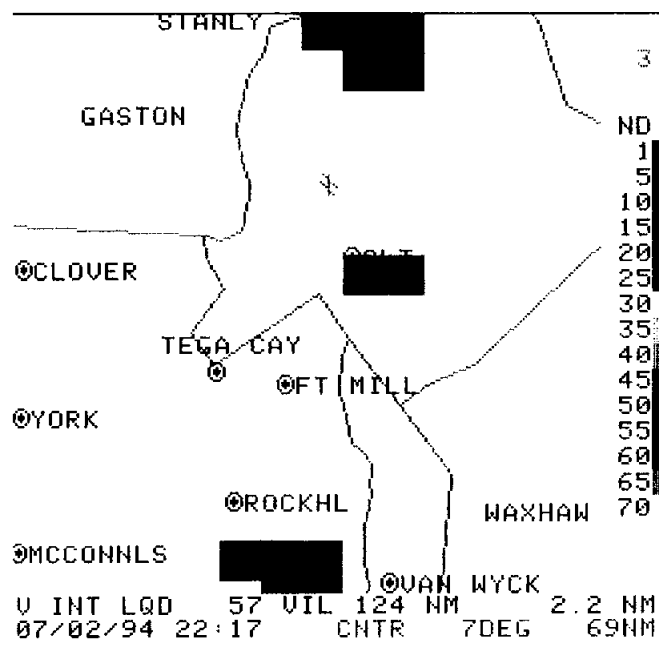


07/06/94 14:02

2  
QUAD 1 MAG=8X  
RDA:KCAE 33/56/56N  
344 FT 81/07/08W  
MODE A / 21  
MAX= 59 DBZ  
OVL:ST

QUAD 2 MAG=8X  
RDA:KCAE 33/56/56N  
344 FT 81/07/08W  
MODE A / 21  
MAX= -38 KT 34 KT

QUAD 3 MAG=8X  
RDA:KCAE 33/56/56N  
344 FT 81/07/08W  
MODE A / 21  
MAX= 27 KG/M2  
OVL:HI

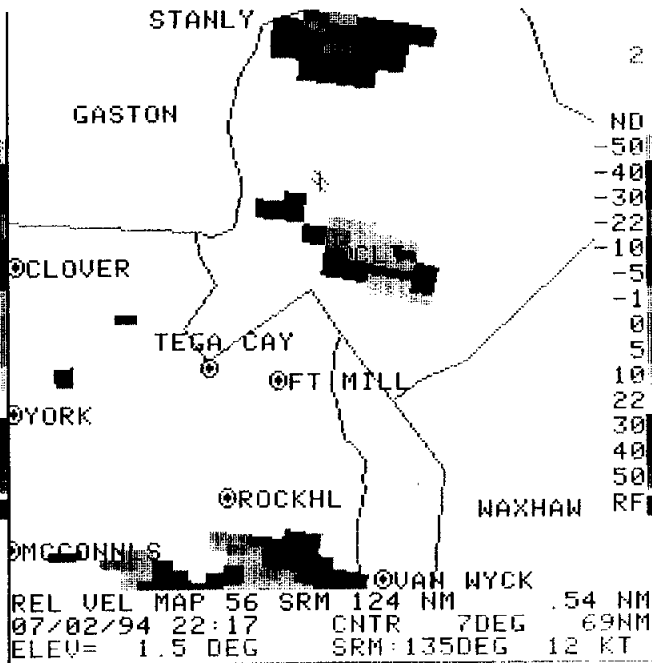
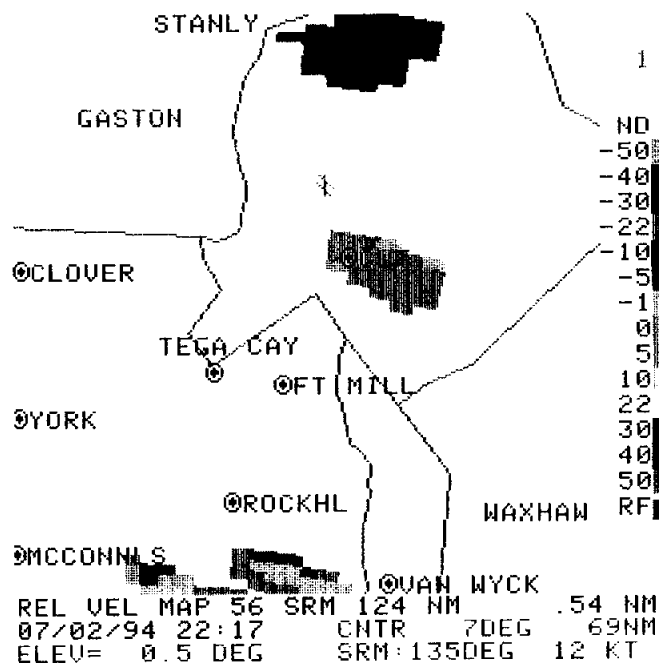


QUAD 4 MAG=8X  
RDA:KCAE 33/56/56N  
344 FT 81/07/08W  
MODE A / 21  
MAX= 35 KFT

015 U 1222 R

HARDCOPY  
HARDCOPY REQUEST  
ACCEPTED

2



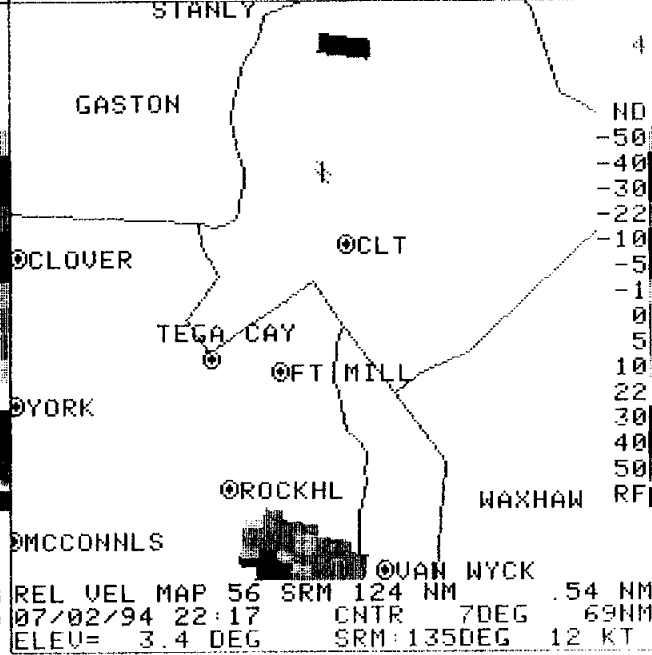
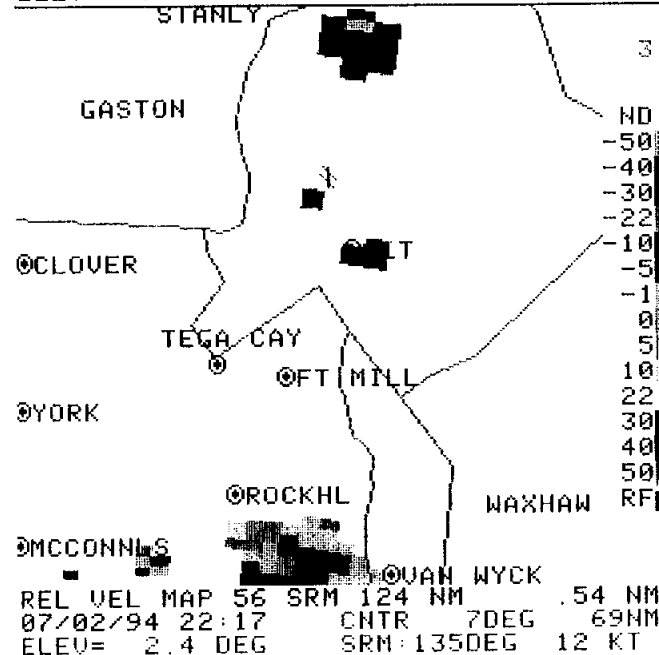
07/06/94 14:01

2 QUAD 1 MAG=8X  
RDA:KCAE 33/56/56N  
344 FT 81/07/08W  
ND MODE A / 21  
-50 MAX= -40 KT 39 KT  
-40 OUL: M  
-30  
-22

QUAD 2 MAG=8X  
RDA:KCAE 33/56/56N  
-5 344 FT 81/07/08W  
-1 MODE A / 21  
0 MAX= -35 KT 30 KT  
5 OUL: M  
10  
22  
30

QUAD 3 MAG=8X  
RDA:KCAE 33/56/56N  
40 344 FT 81/07/08W  
50 MODE A / 21  
RF MAX= -47 KT 31 KT  
OUL: M

QUAD 4 MAG=8X  
RDA:KCAE 33/56/56N  
344 FT 81/07/08W  
MODE A / 21  
MAX= -40 KT 35 KT  
OUL: M



4

ND  
-50  
-40  
-30  
-22  
-10  
-5  
-1  
0  
5  
10  
22  
30  
40  
50  
RF

◎CLOVER  
TEGA CAY  
◎FT MILL  
◎YORK  
◎ROCKHL  
WAXHAW  
◎MCCONNLS  
◎UAN WYCK

A/R (RDA) 7 DEG  
28809FT 69 NM  
015 V 1222 R  
NO COMLINE TO SEND  
ALERT DEF. TO RPG  
06/1230 ARCHIVE  
UNIT 1 READ DONE  
HARDCOPY

HARDCOPY REQUEST  
ACCEPTED

07/06/94 14:17

QUAD 1 MAG=8X  
RDA:KCAE 33/56/56N  
344 FT 81/07/08M  
MODE A / DBZ 21  
DUL:HI M

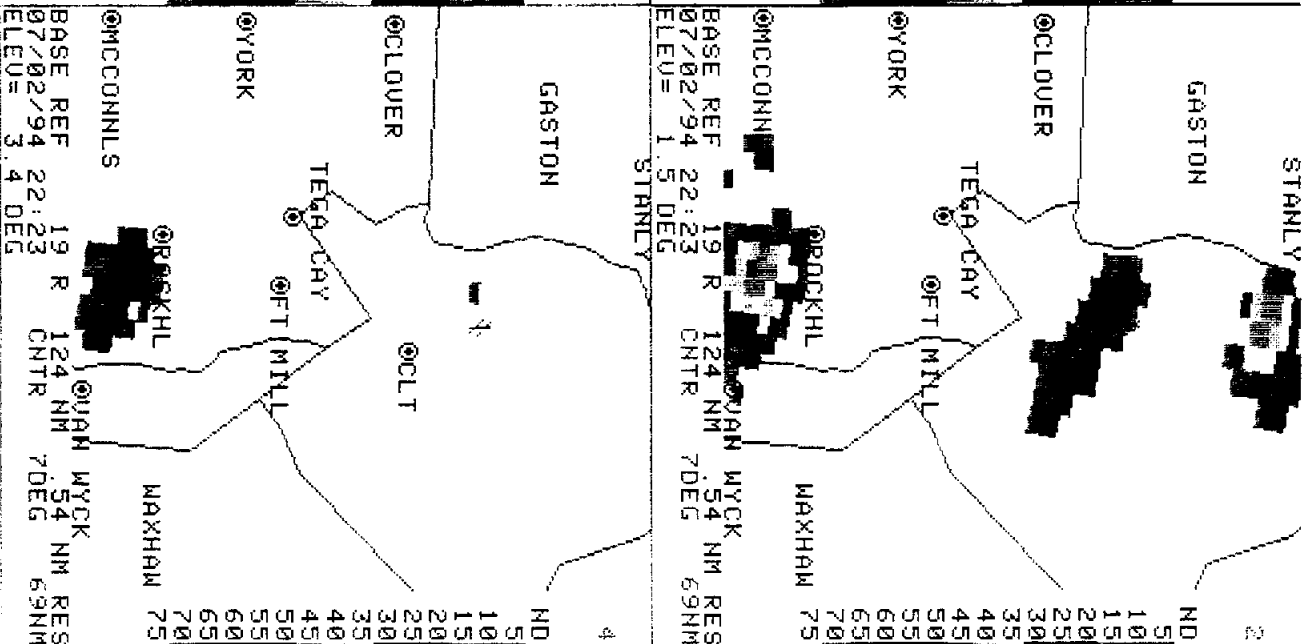
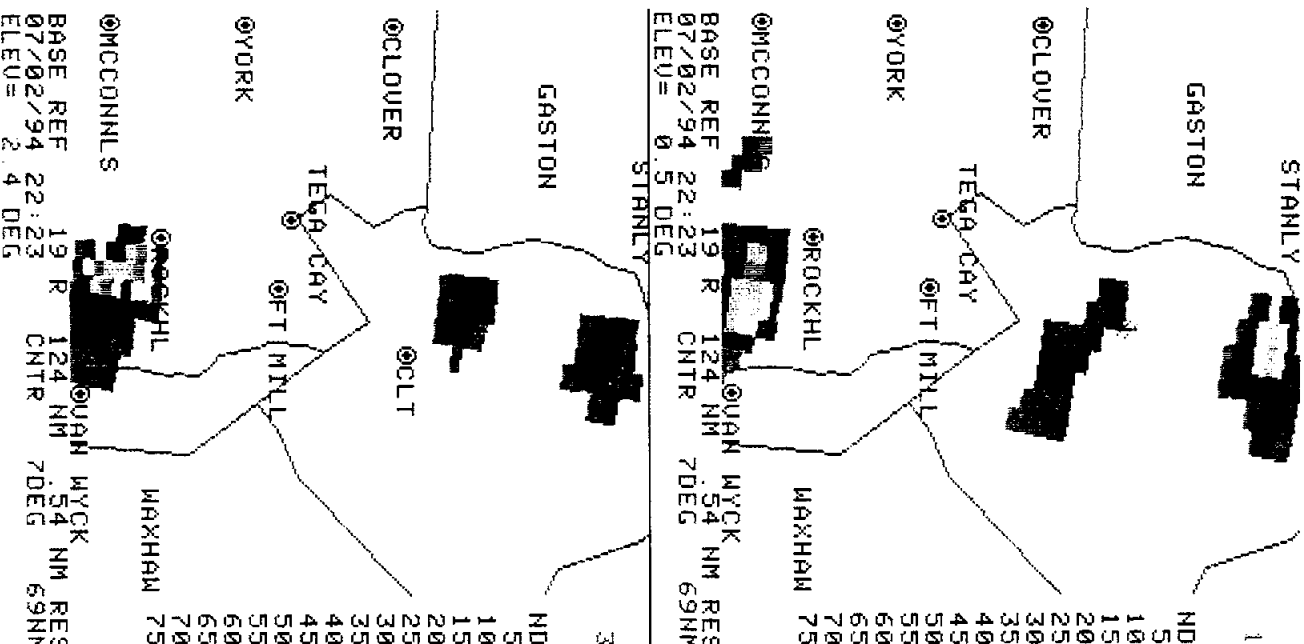
QUAD 2 MAG=8X  
RDA:KCAE 33/56/56N  
344 FT 81/07/08M  
MODE A / DBZ 21  
DUL:HI M

QUAD 3 MAG=8X  
RDA:KCAE 33/56/56N  
344 FT 81/07/08M  
MODE A / DBZ 21  
DUL:HI M

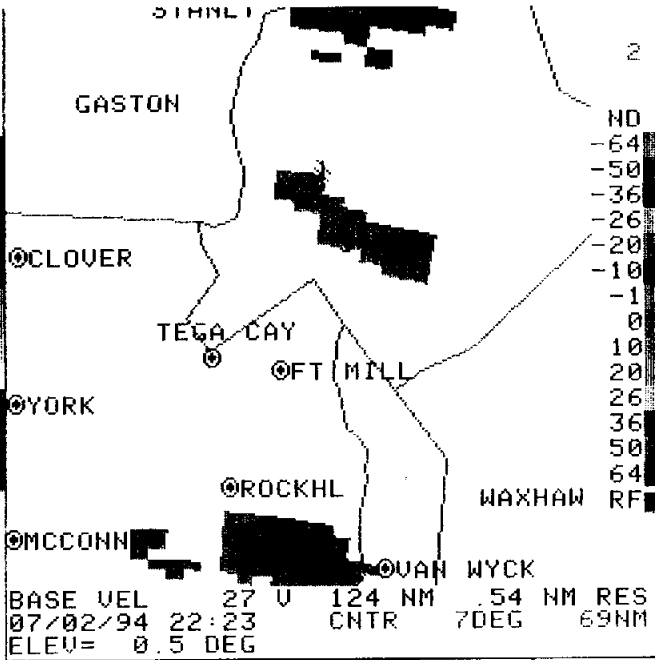
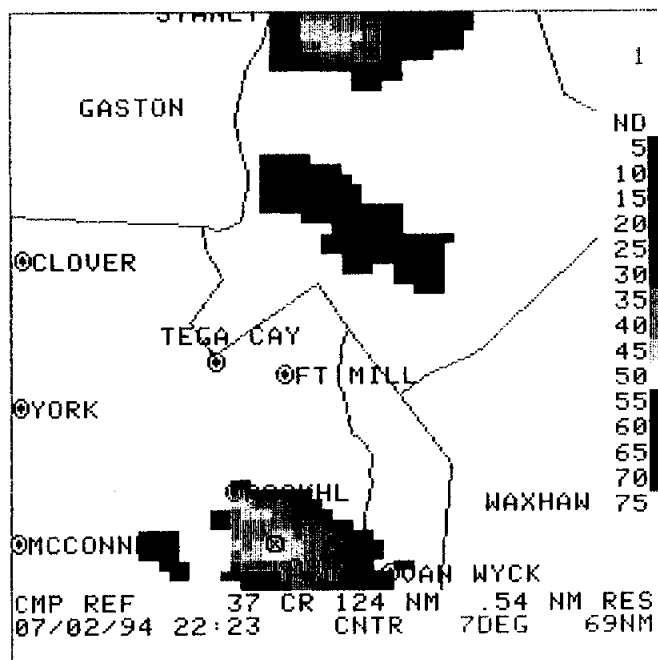
QUAD 4 MAG=8X  
RDA:KCAE 33/56/56N  
344 FT 81/07/08M  
MODE A / DBZ 21  
DUL:HI M

A/R (RDA) 7 DEG  
28778FT 69 NM  
015 U 1222 R

HARDCOPY  
HARDCOPY REQUEST  
ACCEPTED



4



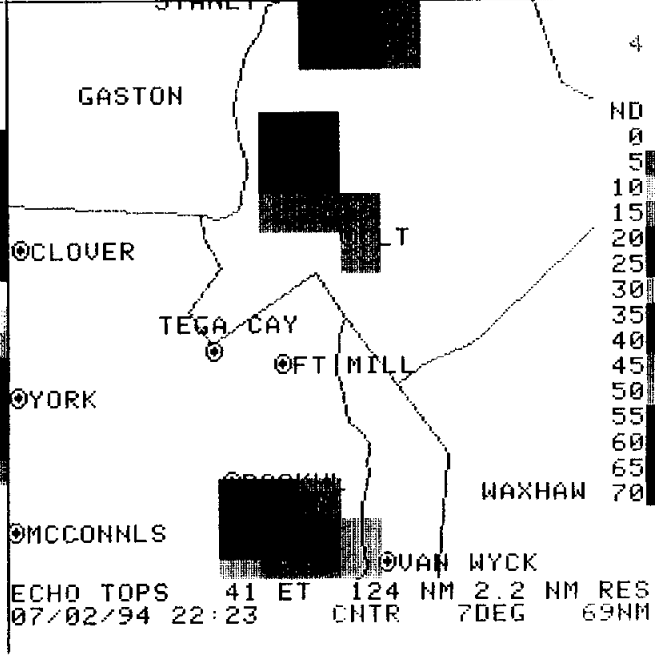
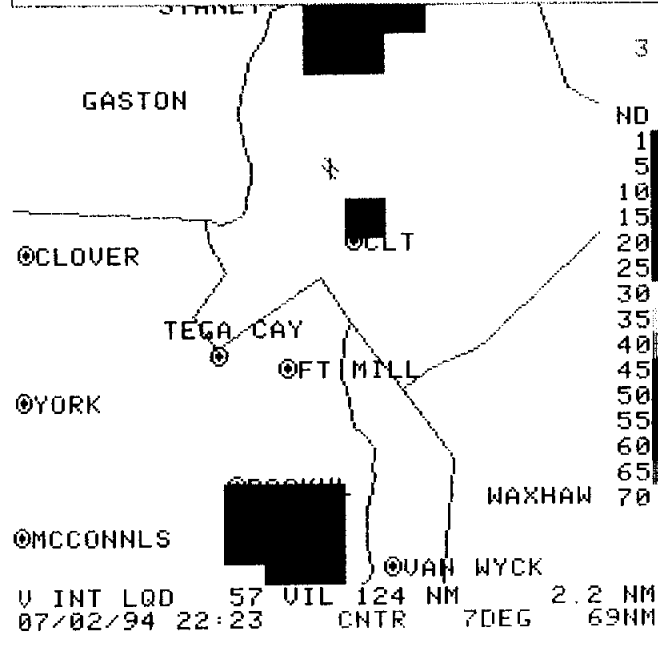
07/06/94 12:49

2 QUAD 1 MAG=8X  
RDA:KCAE 33/56/56N  
344 FT 81/07/08W  
MODE A / 21  
-64 MAX= 59 DBZ  
-50 OUL:ST

QUAD 2 MAG=8X  
RDA:KCAE 33/56/56N  
344 FT 81/07/08W  
MODE A / 21  
MAX= -39 KT 67 KT

QUAD 3 MAG=8X  
RDA:KCAE 33/56/56N  
344 FT 81/07/08W  
MODE A / 21  
MAX= 29 KG/M2  
OUL:HI

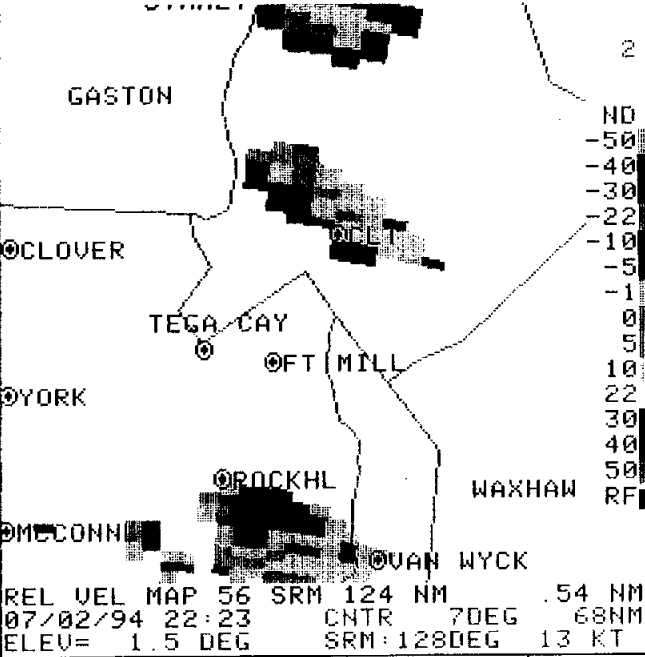
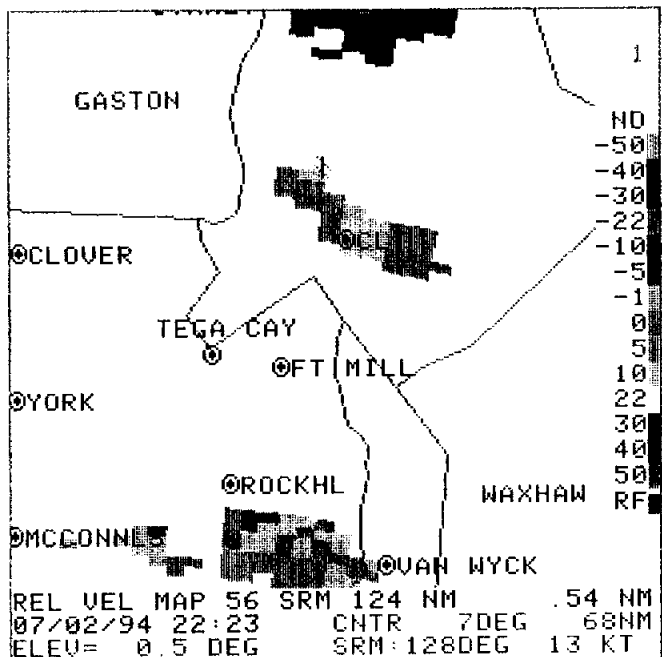
QUAD 4 MAG=8X  
RDA:KCAE 33/56/56N  
344 FT 81/07/08W  
MODE A / 21  
MAX= 34 KFT



A/R (RDA)  
015 U 1222 R

HARDCOPY  
HARDCOPY REQUEST  
ACCEPTED

5



07/06/94 12:52

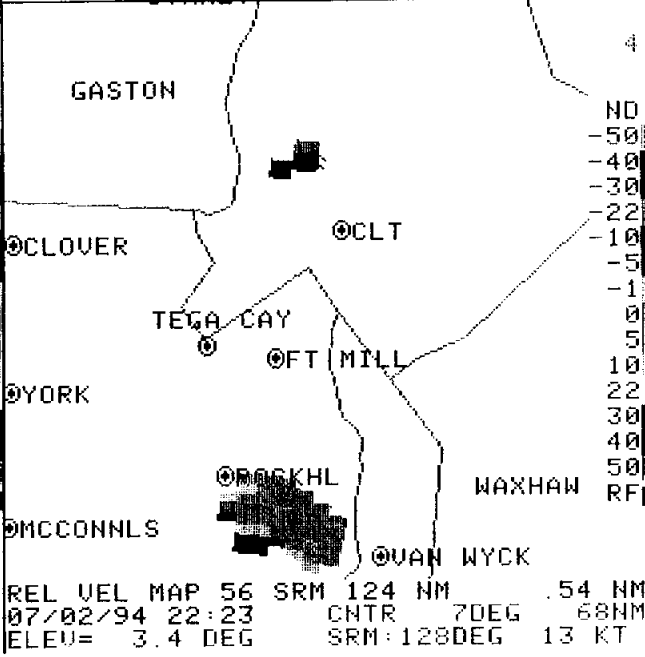
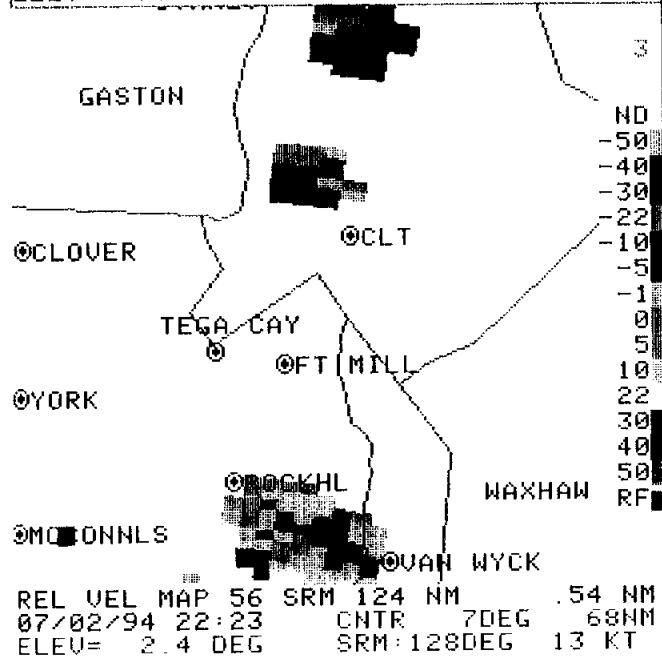
2

QUAD 1 MAG=8X  
RDA:KCAE 33/56/56N  
344 FT 81/07/08W  
MODE A / 21  
MAX= -40 KT 80 KT  
OUL: M

QUAD 2 MAG=8X  
RDA:KCAE 33/56/56N  
344 FT 81/07/08W  
MODE A / 21  
MAX= -34 KT 30 KT  
OUL: M

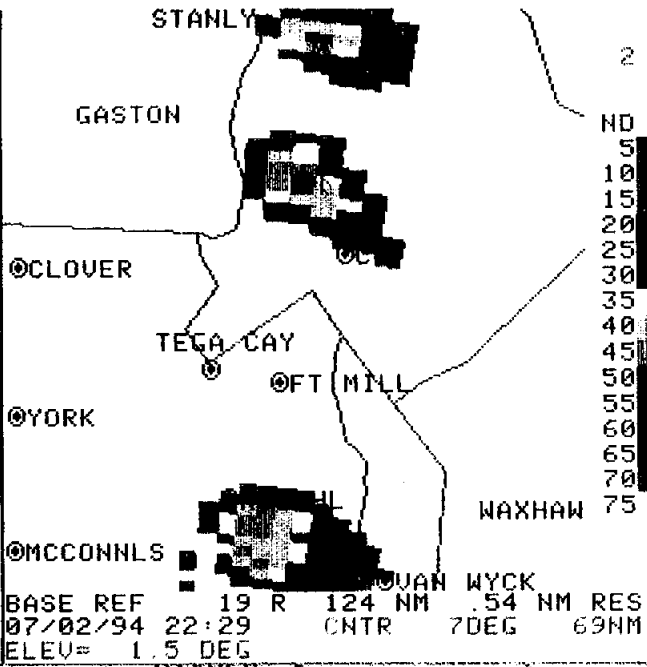
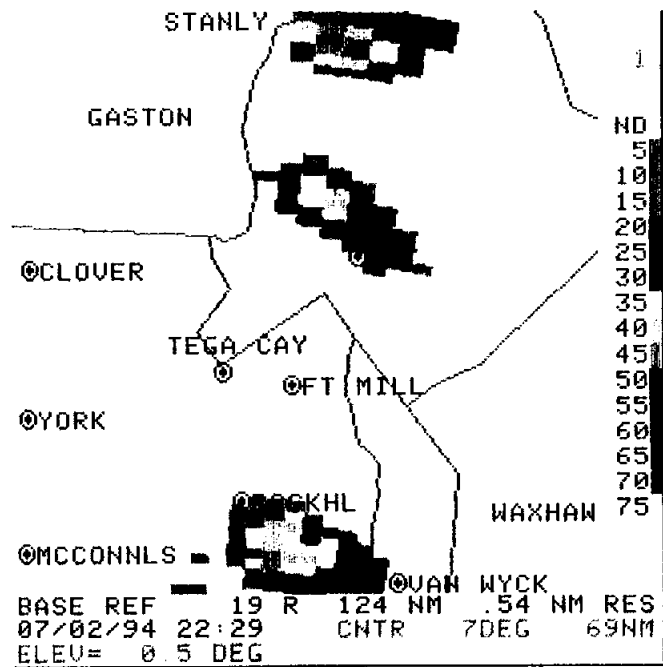
QUAD 3 MAG=8X  
RDA:KCAE 33/56/56N  
344 FT 81/07/08W  
MODE A / 21  
MAX= -43 KT 31 KT  
OUL: M

QUAD 4 MAG=8X  
RDA:KCAE 33/56/56N  
344 FT 81/07/08W  
MODE A / 21  
MAX= -39 KT 33 KT  
OUL: M



A/R (ROA) 7 DEG  
0 7396FT 68 NM  
5 @15 V 1222 R  
10 NO COMLINE TO SEND  
22 ALERT DEF. TO RPG  
30 06/1230 ARCHIVE  
40 UNIT 1 READ DONE  
50 HARDCOPY  
RF HARDCOPY REQUEST ACCEPTED

6

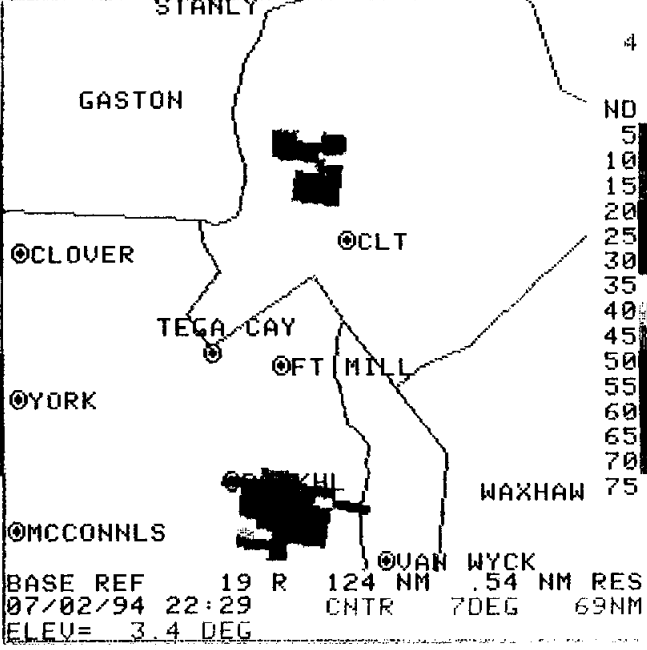
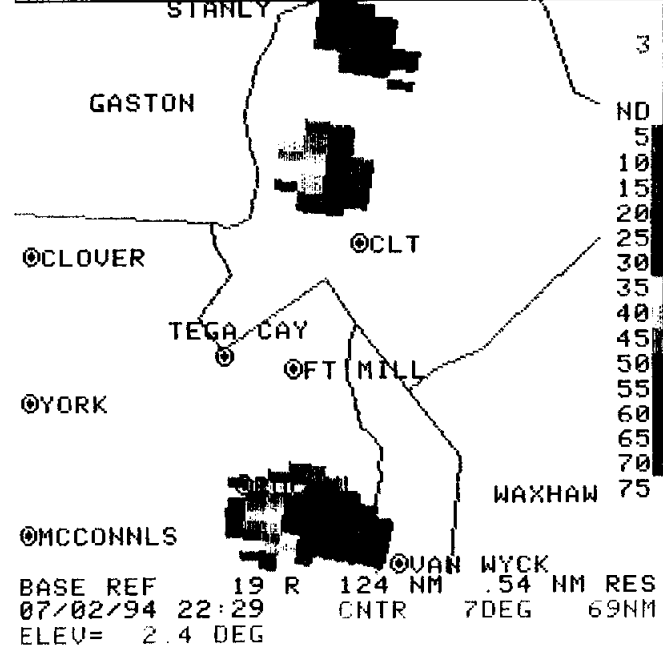


07/06/94 14:20

2 QUAD 1 MAG=8X  
RDA:KCAE 33/56/56N  
344 FT 81/07/08W  
MODE A / 21  
5 MAX= 56 DBZ  
10 DUL:HI M  
15

30 QUAD 2 MAG=8X  
RDA:KCAE 33/56/56N  
344 FT 81/07/08W  
MODE A / 21  
45 MAX= 56 DBZ  
50 DUL:HI M  
55

65 QUAD 3 MAG=8X  
RDA:KCAE 33/56/56N  
344 FT 81/07/08W  
MODE A / 21  
70 MAX= 61 DBZ  
75 DUL:HI M



QUAD 4 MAG=8X  
RDA:KCAE 33/56/56N  
344 FT 81/07/08W  
MODE A / 21  
MAX= 60 DBZ  
DUL:HI M

35 A/R (RDA) 7 DEG  
40 28778FT 69 NM  
45 Q15 U 1222 R  
50

HARDCOPY  
HARDCOPY REQUEST  
ACCEPTED

7



07/06/94 12:56

QUAD 1 MAG=8X  
RDA:KCAE 33/56/56N  
344 FT 81/07/08M  
MODE A / 21  
MAX= 61 DBZ  
DUL: ST

QUAD 2 MAG=8X  
RDA:KCAE 33/56/56N  
344 FT 81/07/08M  
MODE A / 21  
MAX= -51 KT 41 KT

QUAD 3 MAG=8X  
RDA:KCAE 33/56/56N  
344 FT 81/07/08M  
MODE A / 21  
MAX= 38 KG/M2  
DUL: HI

QUAD 4 MAG=8X  
RDA:KCAE 33/56/56N  
344 FT 81/07/08M  
MODE A / 21  
MAX= 34 KFT

A/R (RDA) 7 DEG  
015 U 1222 R

HARDCOPY  
HARDCOPY REQUEST  
ACCEPTED

STANLY  
GASTON  
ND 1  
5  
10  
15  
20  
25  
30  
35  
40  
45  
50  
55  
60  
65  
70

STANLY

GASTON

TEGA-CAY

YORK

CMP REF 37 CR 124 NM  
07/02/94 22:29 WYCK NM RES 54 NM 69NM  
7DEG

STANLY

GASTON

TEGA-CAY

YORK

U INT LOD 57 UIL CNTR 124 NM  
07/02/94 22:29 WYCK NM RES 54 NM 69NM  
7DEG

STANLY  
GASTON  
ND 2  
-64  
-50  
-36  
-26  
-20  
-10  
-1  
0  
10  
20  
26  
36  
50  
64

STANLY

GASTON

TEGA-CAY

YORK

BASE VEL 27 U  
07/02/94 22:29 WYCK NM RES 54 NM 69NM  
ELEV= 0.5 DEG

STANLY

GASTON

TEGA-CAY

YORK

ECHO TOPS 41 ET  
07/02/94 22:29 WYCK NM RES 54 NM 69NM  
7DEG

8

07/06/94 12:58

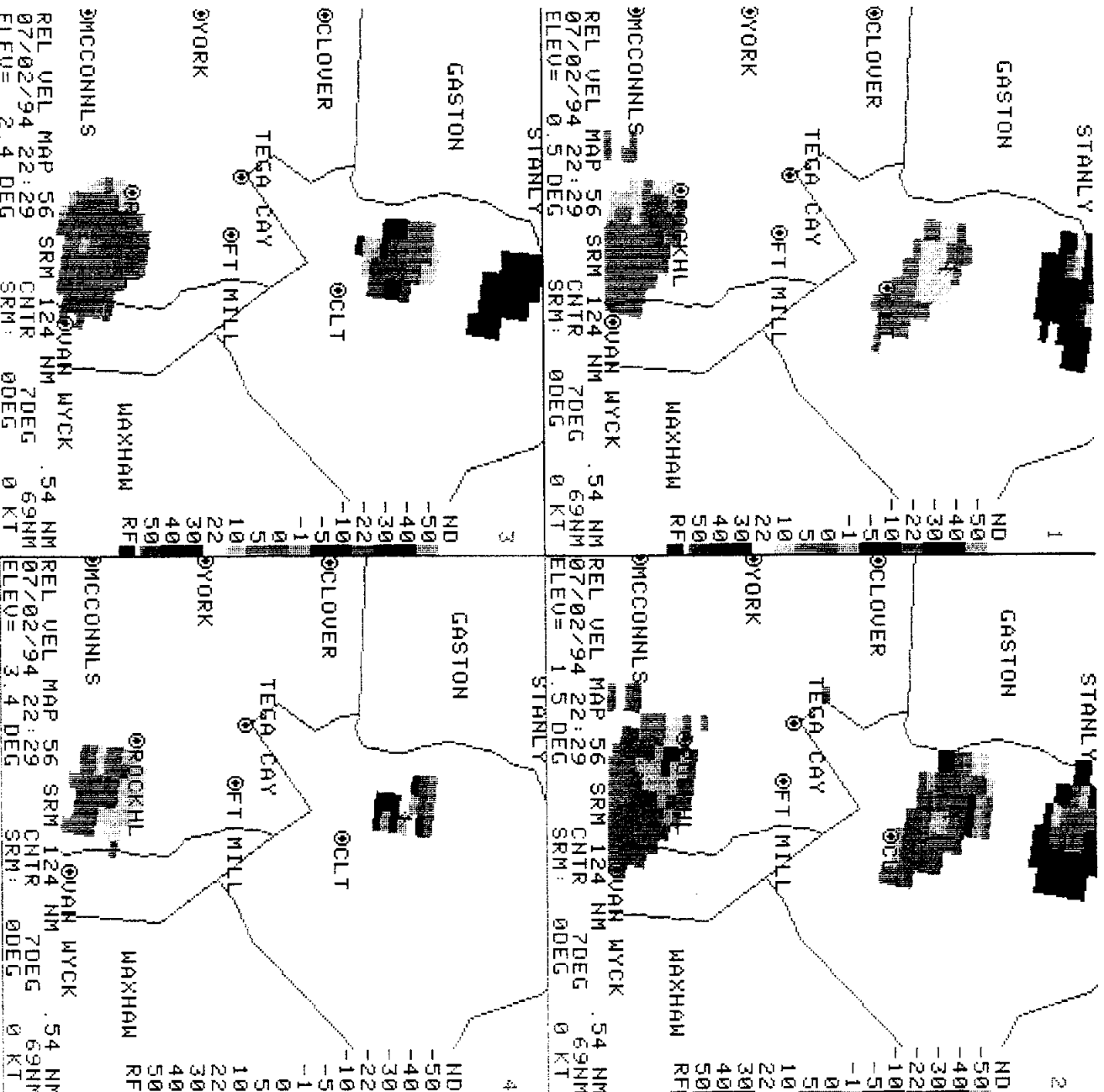
QUAD 1 MAG=8X  
RDA:KCAE 33/56/56N  
344 FT / 81/07/08M  
MODE A / 21  
MAX=-51 KT 41 KT  
OUL: M

QUAD 2 MAG=8X  
RDA:KCAE 33/56/56N  
344 FT / 81/07/08M  
MODE A / 21  
MAX=-35 KT 41 KT  
OUL: M

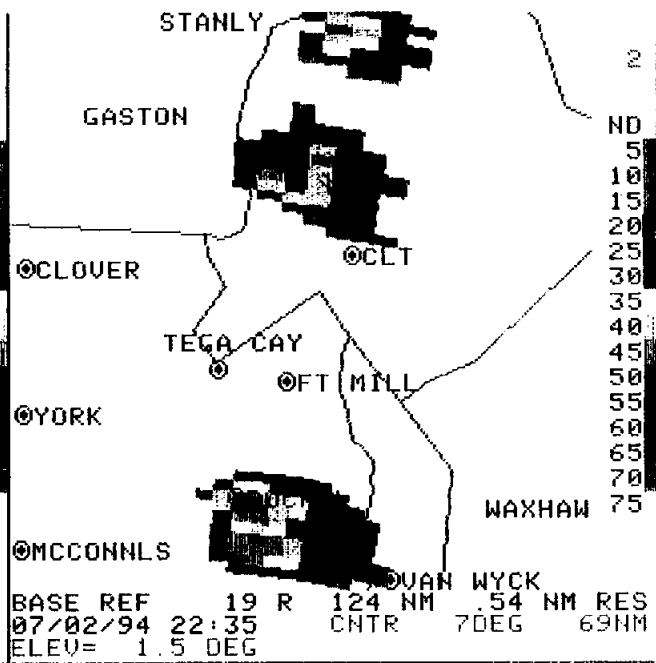
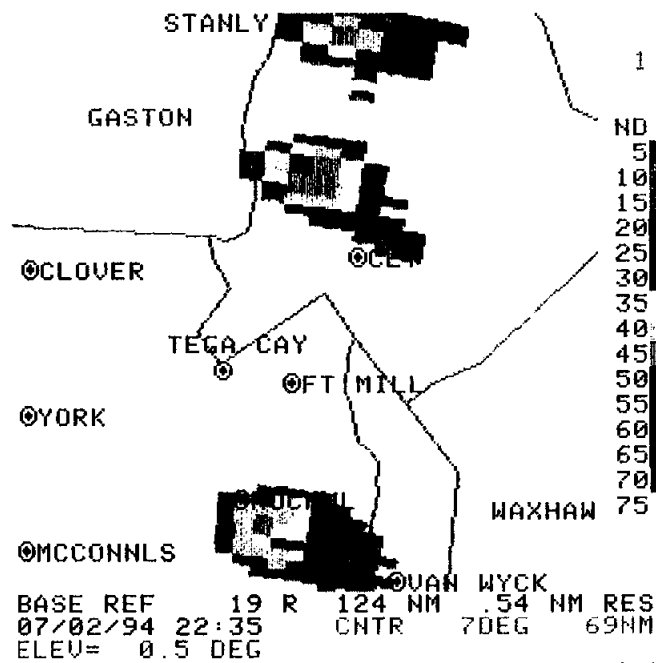
QUAD 3 MAG=8X  
RDA:KCAE 33/56/56N  
344 FT / 81/07/08M  
MODE A / 21  
MAX=-36 KT 39 KT  
OUL: M

QUAD 4 MAG=8X  
RDA:KCAE 33/56/56N  
344 FT / 81/07/08M  
MODE A / 21  
MAX=-33 KT 39 KT  
OUL: M

A/R (RDA)  
015 U 1222 R  
NO COMLINE TO SEND  
ALERT DEF. TO RFG  
06/1230 ARCHIVE  
UNIT 1 READ DONE  
HARDCOPY  
HARDCOPY REQUEST  
ACCEPTED



9



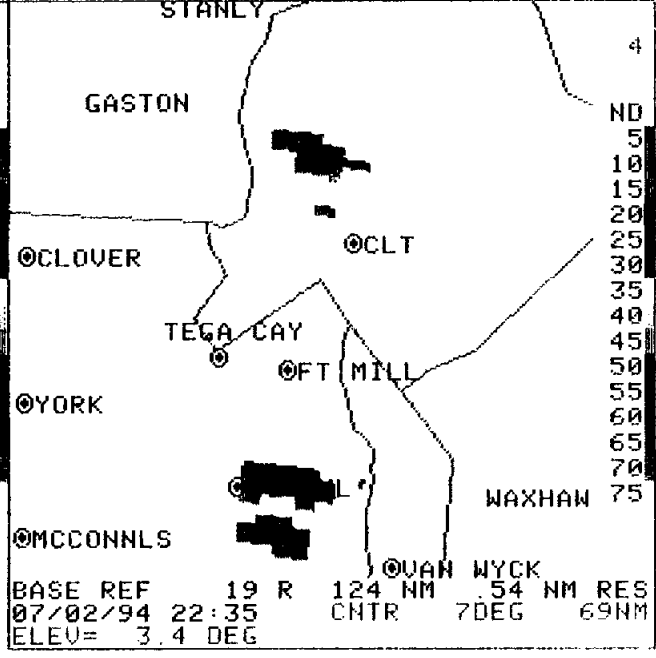
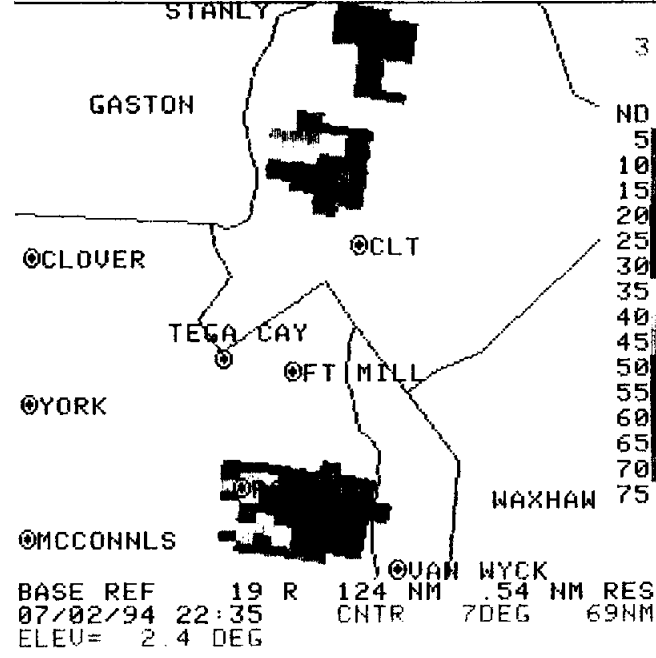
07/06/94 14:27

2  
QUAD 1 MAG=8X  
RDA:KCAE 33/56/56N  
344 FT 81/07/08W  
MODE A / 21  
MAX= 55 DBZ  
OUL:HI M

25  
QUAD 2 MAG=8X  
RDA:KCAE 33/56/56N  
344 FT 81/07/08W  
MODE A / 21  
MAX= 56 DBZ  
OUL:HI M

65  
QUAD 3 MAG=8X  
RDA:KCAE 33/56/56N  
344 FT 81/07/08W  
MODE A / 21  
MAX= 61 DBZ  
OUL:HI M

70  
QUAD 4 MAG=8X  
RDA:KCAE 33/56/56N  
344 FT 81/07/08W  
MODE A / 21  
MAX= 57 DBZ  
OUL:HI M



A/R (RDA) 7 DEG  
28778FT 69 NM  
015 U 1222 R

HARDCOPY  
HARDCOPY REQUEST  
ACCEPTED

10

07/06/94 12:59

QUAD 1 MAG=8X  
RDA:KCAE 33/56/56N  
344 FT 81/07/08W  
MODE A / 21  
MAX= 61 DBZ  
OUL:ST

QUAD 2 MAG=8X  
RDA:KCAE 33/56/56N  
344 FT 81/07/08W  
MODE A / 21  
MAX= -47 KT 35 KT

QUAD 3 MAG=8X  
RDA:KCAE 33/56/56N  
344 FT 81/07/08W  
MODE A / 21  
MAX= 46 KG/M2  
OUL:HI

QUAD 4 MAG=8X  
RDA:KCAE 33/56/56N  
344 FT 81/07/08W  
MODE A / 21  
MAX= 37 KFT

015 U 1222 R  
HARD COPY  
HARD COPY REQUEST  
ACCEPTED

STANLY

GASTON

OCLOVER

TEGA CAY

OYORK

MCCONNLS

GASTON

OCLOVER

TEGA CAY

OYORK

MCCONNLS

V INT LOD 57 UIL 124 NM  
07/02/94 22:35 CNTR

ND 1

5 10 15 20 25 30 35 40 45 50 55 60 65 70 75

CMP REF 37 CR 124 NM  
07/02/94 22:35 CNTR  
WYCK 54 NM RES  
70 DEG 69NM

MAXHAM

ND 3

5 10 15 20 25 30 35 40 45 50 55 60 65 70

BASE VEL 27 U 124 NM  
07/02/94 22:35 CNTR  
ELEV= 0.5 DEG  
WYCK 54 NM RES  
70 DEG 69NM

STANLY

GASTON

OCLOVER

TEGA CAY

OYORK

MCCONNLS

GASTON

OCLOVER

TEGA CAY

OYORK

MCCONNLS

ECHO TOPS 41 ET 124 NM  
07/02/94 22:35 CNTR  
WYCK 54 NM RES  
70 DEG 69NM

ND 2

-64 -50 -36 -26 -20 -10 -1 0 10 20 26 36 50 64

BASE VEL 27 U 124 NM  
07/02/94 22:35 CNTR  
ELEV= 0.5 DEG  
WYCK 54 NM RES  
70 DEG 69NM

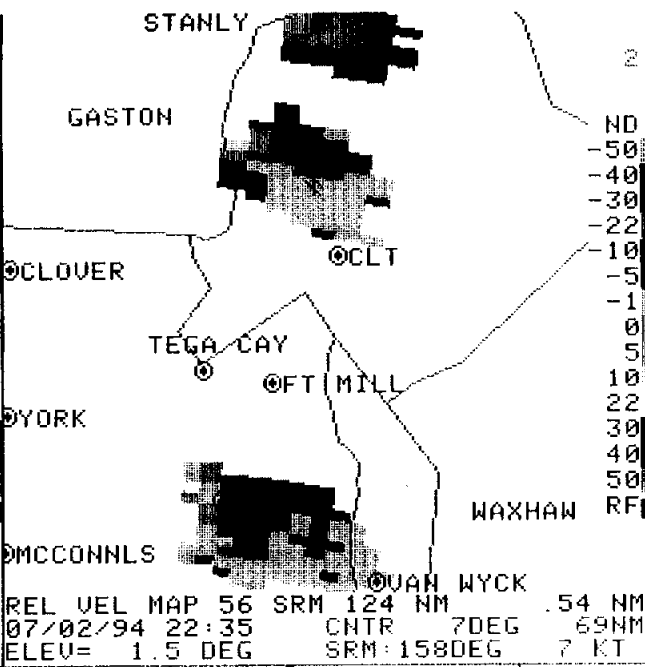
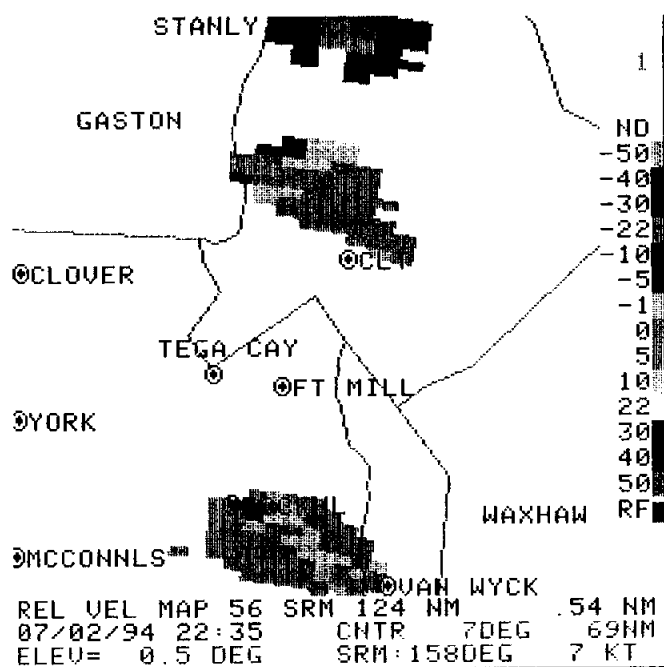
MAXHAM

ND 4

5 10 15 20 25 30 35 40 45 50 55 60 65 70

BASE VEL 27 U 124 NM  
07/02/94 22:35 CNTR  
ELEV= 0.5 DEG  
WYCK 54 NM RES  
70 DEG 69NM

11



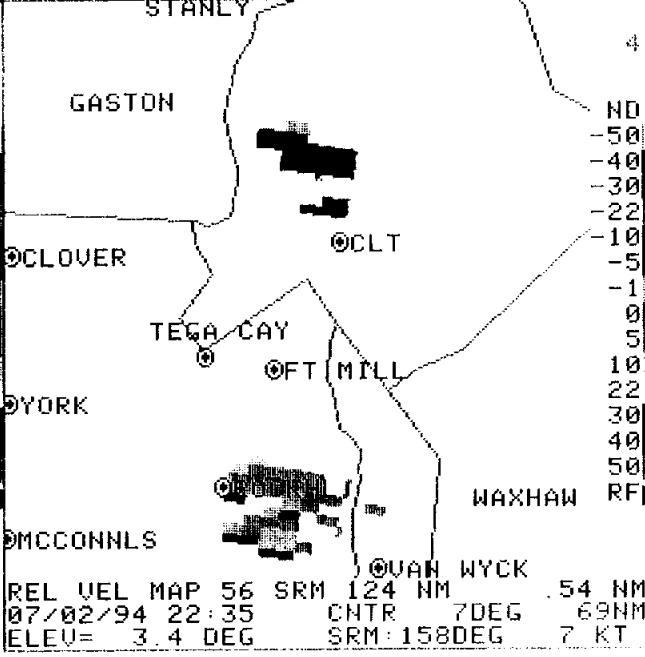
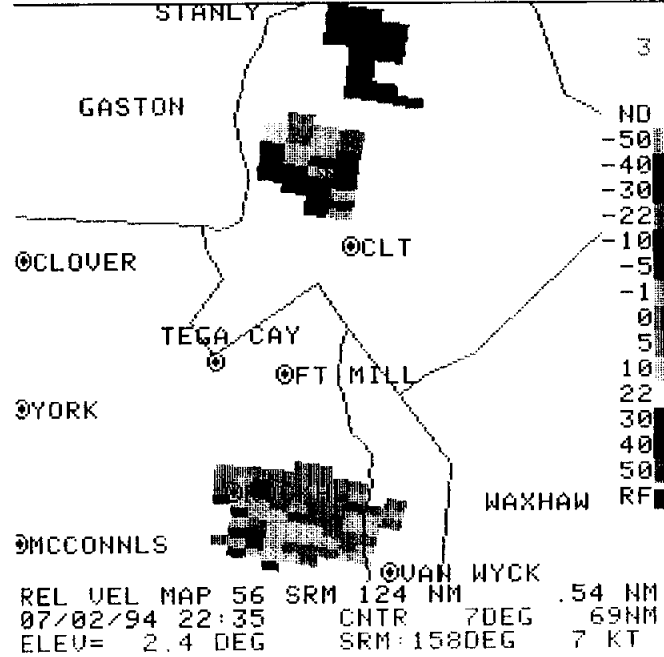
07/06/94 13:01

2 QUAD 1 MAG=8X  
RDA:KCAE 33/56/56N  
344 FT 81/07/08W  
MODE A / 21  
MAX= -42 KT 29 KT  
OUL: M

QUAD 2 MAG=8X  
RDA:KCAE 33/56/56N  
344 FT 81/07/08W  
MODE A / 21  
MAX= -32 KT 36 KT  
OUL: M

QUAD 3 MAG=8X  
RDA:KCAE 33/56/56N  
344 FT 81/07/08W  
MODE A / 21  
MAX= -33 KT 29 KT  
OUL: M

QUAD 4 MAG=8X  
RDA:KCAE 33/56/56N  
344 FT 81/07/08W  
MODE A / 21  
MAX= -36 KT 39 KT  
OUL: M



A/R (RDA) 7 DEG  
0 28809FT 69 NM  
5 015 V 1222 R  
10 NO COMLINE TO SEND  
22 ALERT DEF TO RPG  
30 06/1230 ARCHIVE  
40 UNIT 1 READ DONE  
50 HARDCOPY  
HARDCOPY REQUEST  
ACCEPTED

07/06/94 14:30

QUAD 1 MAG=8X  
RDR:KCAE 33/56/56N  
344 FT 81/07/08M  
MODE A / DBZ  
MAX= 57 DBZ  
OUL:HI M

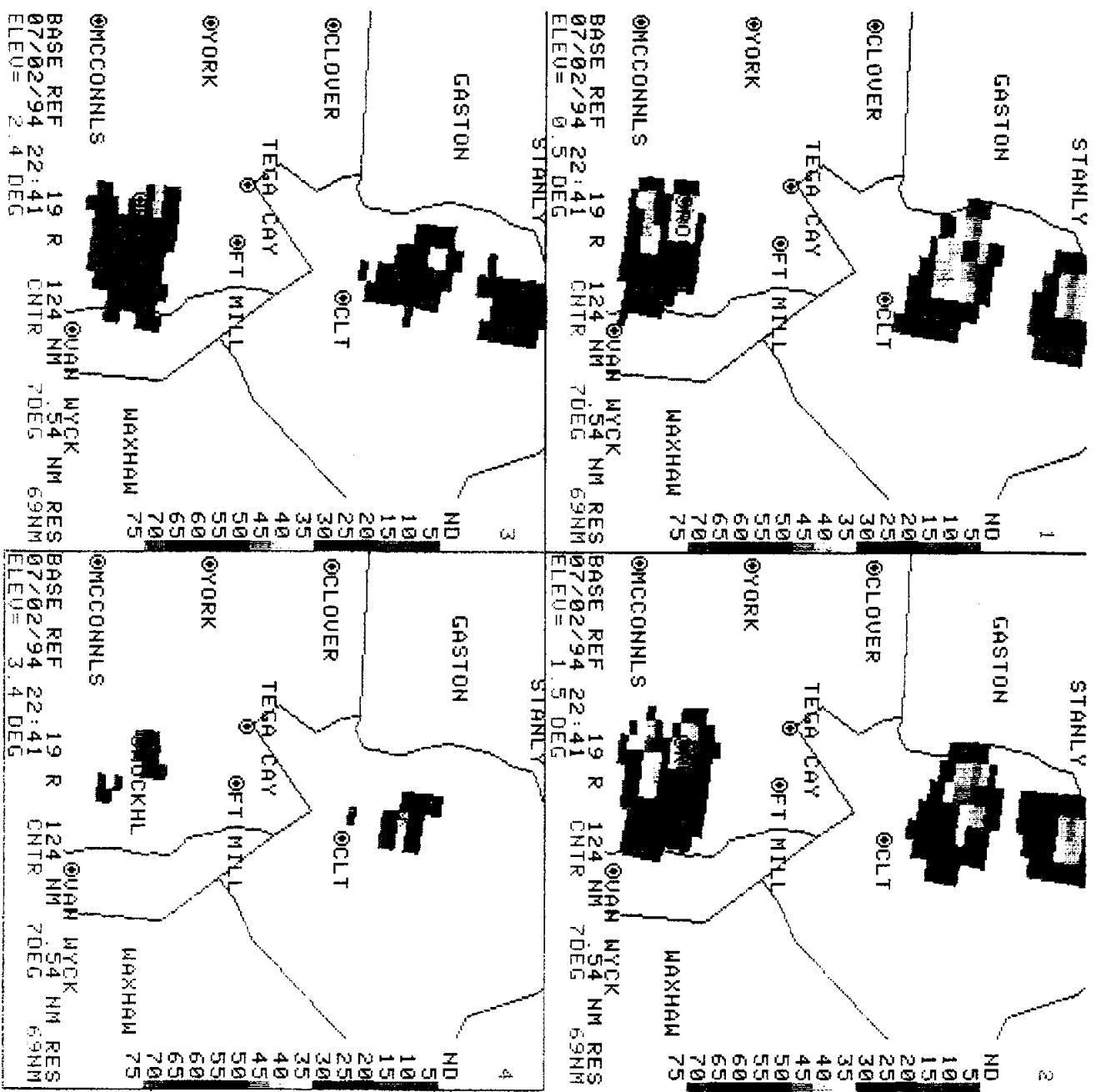
QUAD 2 MAG=8X  
RDR:KCAE 33/56/56N  
344 FT 81/07/08M  
MODE A / DBZ  
MAX= 57 DBZ  
OUL:HI M

QUAD 3 MAG=8X  
RDR:KCAE 33/56/56N  
344 FT 81/07/08M  
MODE A / DBZ  
MAX= 58 DBZ  
OUL:HI M

QUAD 4 MAG=8X  
RDR:KCAE 33/56/56N  
344 FT 81/07/08M  
MODE A / DBZ  
MAX= 59 DBZ  
OUL:HI M

A/R (RDA) 7 DEG  
28778FT 69 NM  
015 U 1222 R

HARDCOPY  
HARDCOPY REQUEST  
ACCEPTED



13

07/06/94 13:03

QUAD 1 MAG=8X  
RDA:KCAE 33/56/56N  
344 FT 81/07/08W  
MODE A / 21  
MAX= 67 DBZ  
OUL:ST

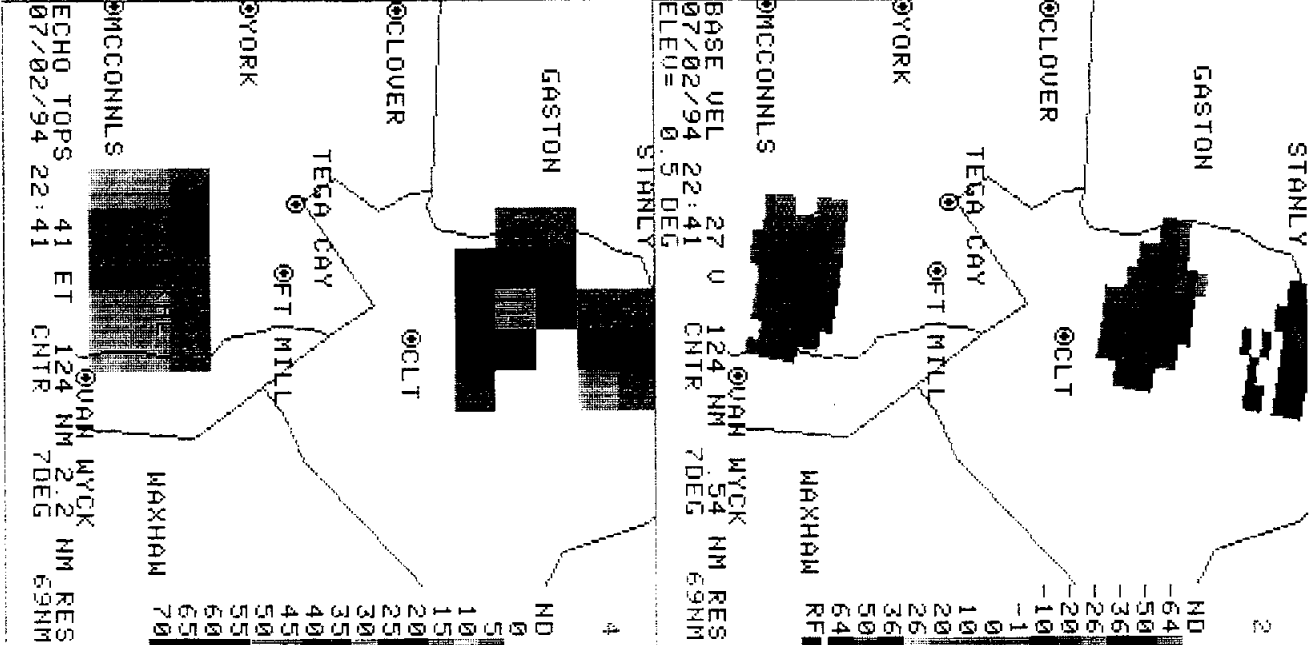
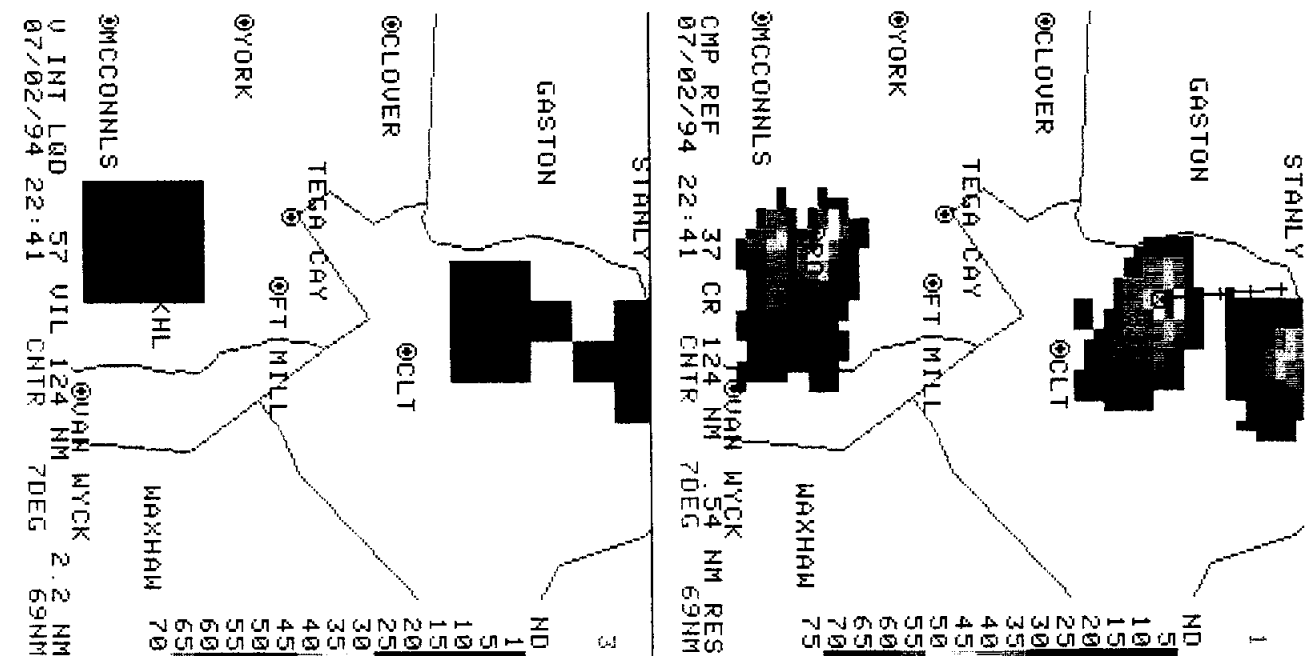
QUAD 2 MAG=8X  
RDA:KCAE 33/56/56N  
344 FT 81/07/08W  
MODE A / 21  
MAX= -55 KT 33 KT

QUAD 3 MAG=8X  
RDA:KCAE 33/56/56N  
344 FT 81/07/08W  
MODE A / 21  
MAX= 35 KG/M2  
OUL:HI

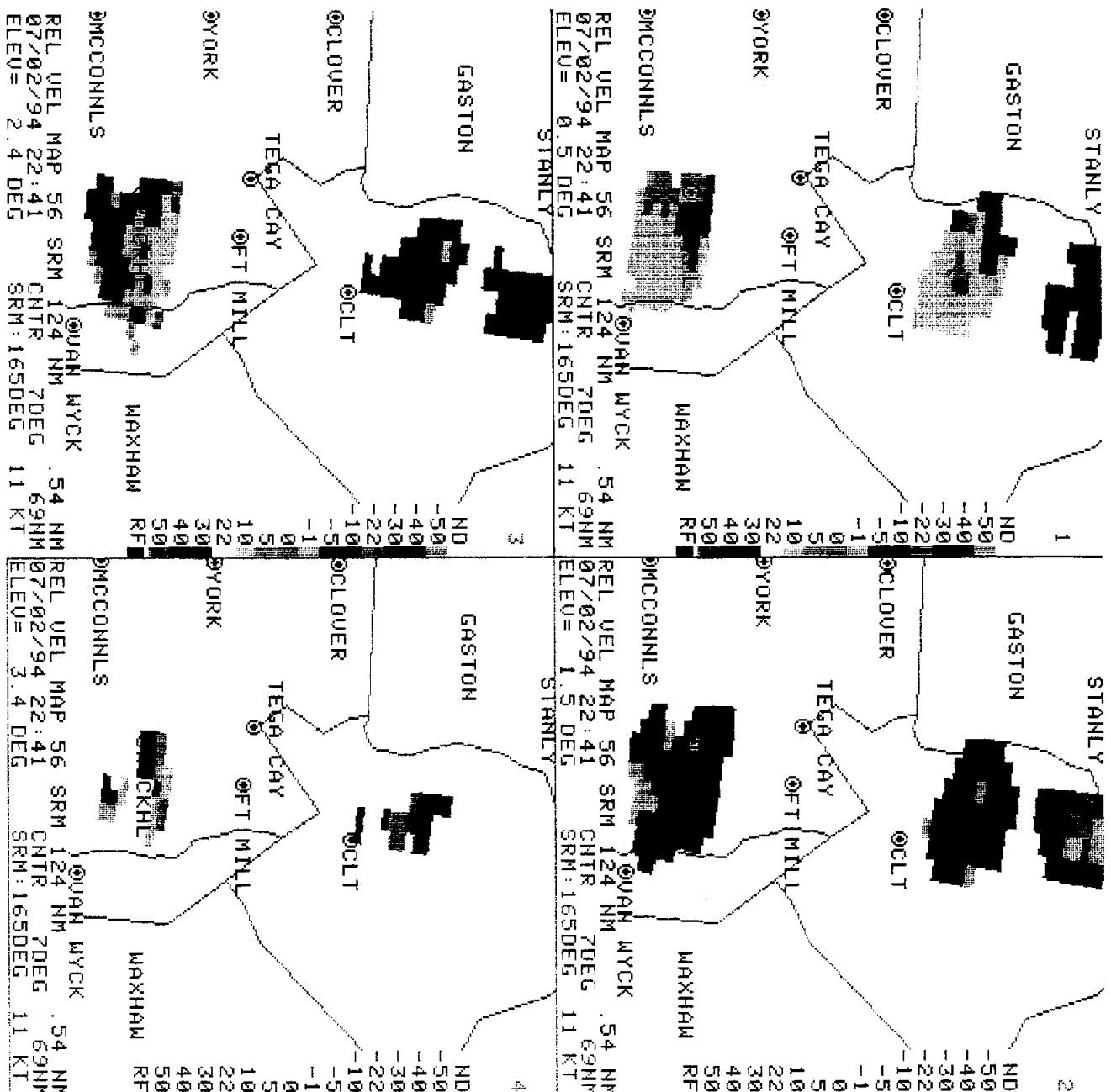
QUAD 4 MAG=8X  
RDA:KCAE 33/56/56N  
344 FT 81/07/08W  
MODE A / 21  
MAX= 37 KFT

015 U 1222 R

HARDCOPY  
HARDCOPY REQUEST  
ACCEPTED



14



07/06/94 13:05

QUAD 1 MAG=8X  
 RDA: KC AE 33/56/56N  
 344 FT / 81/07/08M  
 MODE A / 21  
 MAX= -49 KT 35 KT  
 OUL: M

QUAD 2 MAG=8X  
 RDA: KC AE 33/56/56N  
 344 FT / 81/07/08M  
 MODE A / 21  
 MAX= -35 KT 30 KT  
 OUL: M

QUAD 3 MAG=8X  
 RDA: KC AE 33/56/56N  
 344 FT / 81/07/08M  
 MODE A / 21  
 MAX= -38 KT 38 KT  
 OUL: M

QUAD 4 MAG=8X  
 RDA: KC AE 33/56/56N  
 344 FT / 81/07/08M  
 MODE A / 21  
 MAX= -40 KT 36 KT  
 OUL: M

A/R (RDA) 7 DEG  
 28809FT 69 NM R  
 015 U 1222 R  
 10 NO COMLINE TO SEND  
 22 ALERT DEF TO RFG  
 30 06/1230 ARCHIVE  
 40 UNIT 1 READ DONE  
 50 HARDCOPY  
 HARDCOPY REQUEST  
 ACCEPTED

15



07/06/94 14:33

QUAD 1 MAG=8X  
RDA: KCAE 33/56/56N  
344 FT 81/07/08M  
MODE A / 21  
MAX= 53 DBZ  
OUL: HI M

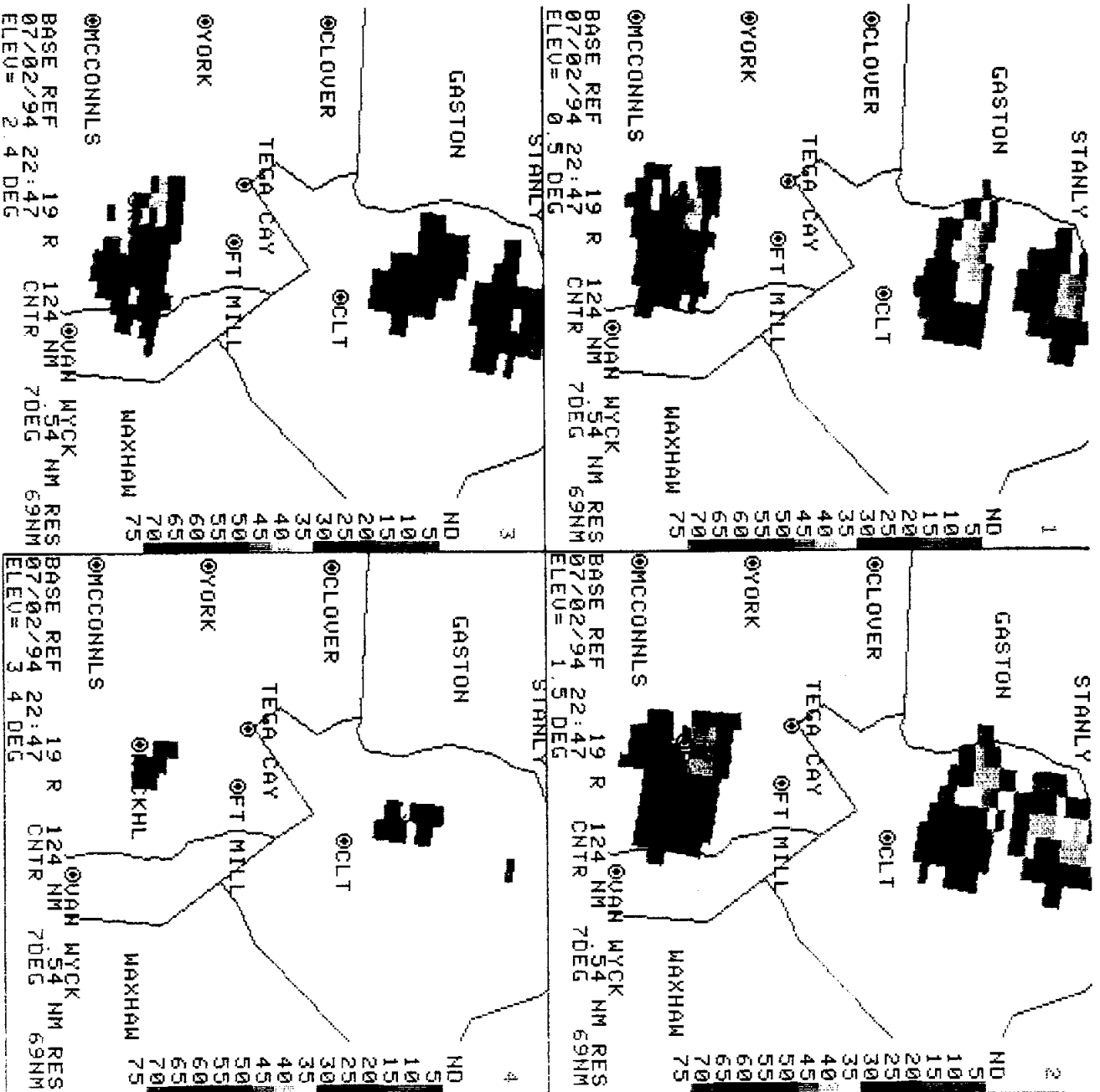
QUAD 2 MAG=8X  
RDA: KCAE 33/56/56N  
344 FT 81/07/08M  
MODE A / 21  
MAX= 55 DBZ  
OUL: HI M

QUAD 3 MAG=8X  
RDA: KCAE 33/56/56N  
344 FT 81/07/08M  
MODE A / 21  
MAX= 57 DBZ  
OUL: HI M

QUAD 4 MAG=8X  
RDA: KCAE 33/56/56N  
344 FT 81/07/08M  
MODE A / 21  
MAX= 58 DBZ  
OUL: HI M

A/R (RDA) 7 DEG  
28778FT 69 NM  
Q15 U 1222 R

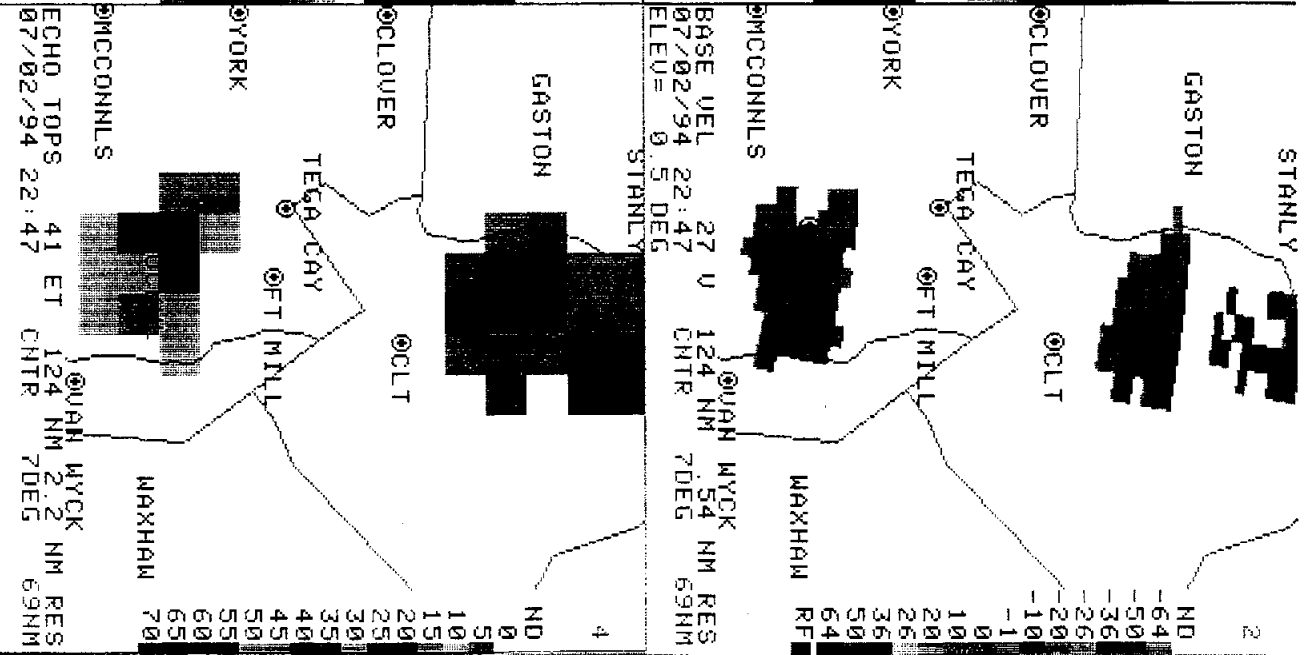
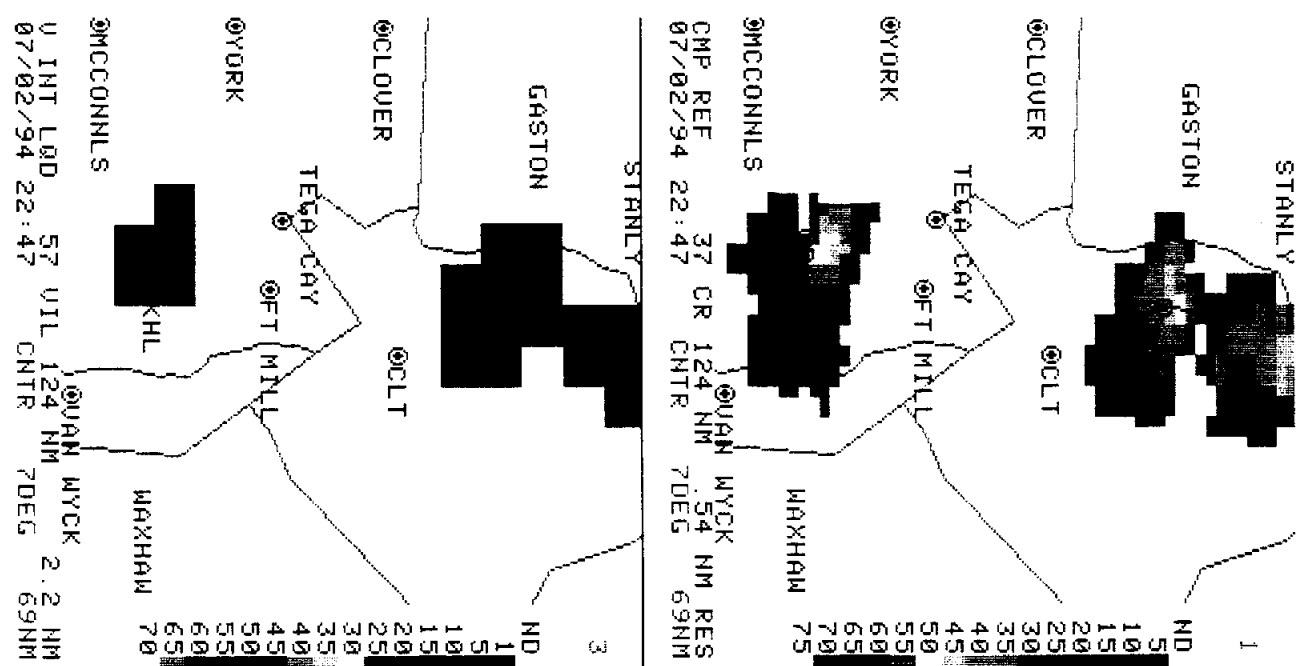
HARDCOPY  
ACCEPTED REQUEST



BASE REF 19 R 124 NM 54 NM RES  
07/02/94 22:47 CTR 7DEG 69NM  
ELEV= 2.4 DEG

BASE REF 19 R 124 NM 54 NM RES  
07/02/94 22:47 CTR 7DEG 69NM  
ELEV= 3.4 DEG

16



07/06/94 13:05  
 QUAD 1 MAG=8X  
 RDA: KCAE 33/56/56N  
 344 FT 81/07/08W  
 MODE A / 21  
 MAX= 59 DBZ  
 QUL: ST

QUAD 2 MAG=8X  
 RDA: KCAE 33/56/56N  
 344 FT 81/07/08W  
 MODE A / 21  
 MAX= -43 KT 50 KT

QUAD 3 MAG=8X  
 RDA: KCAE 33/56/56N  
 344 FT 81/07/08W  
 MODE A / 21  
 MAX= 28 KG/M2  
 QUL: HI

QUAD 4 MAG=8X  
 RDA: KCAE 33/56/56N  
 344 FT 81/07/08W  
 MODE A / 21  
 MAX= 36 KFT

015 U 1222 R

HARDCOPY  
 HARDCOPY REQUEST  
 ACCEPTED

17

07/06/94 13:08

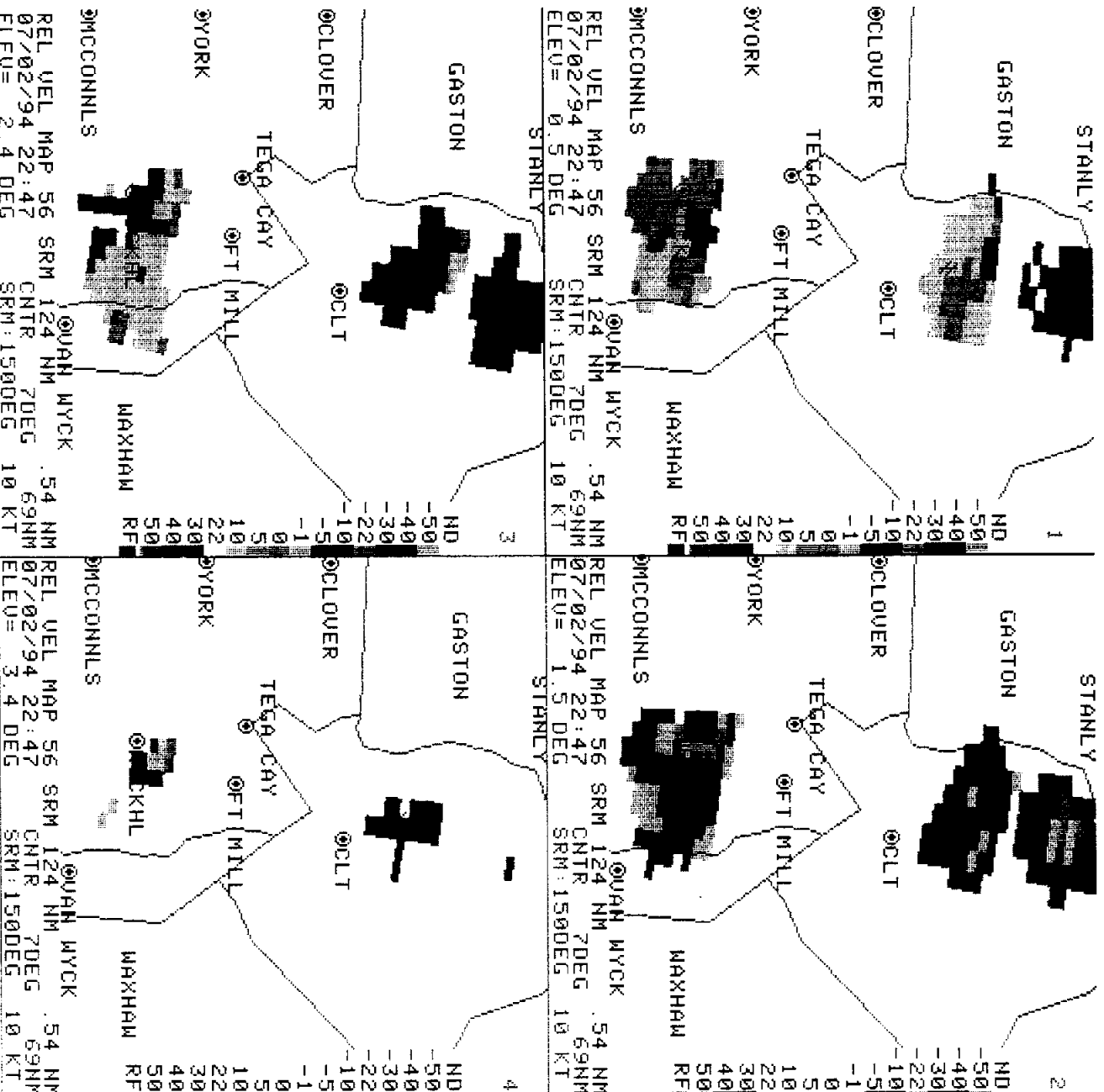
QUAD 1 MAG=8X  
RDA:KCAE 33/56/56N  
344 FT 81/07/08M  
MODE A / 21  
MAX= -35 KT 54 KT  
OUL: M

QUAD 2 MAG=8X  
RDA:KCAE 33/56/56N  
344 FT 81/07/08M  
MODE A / 21  
MAX= -35 KT 32 KT  
OUL: M

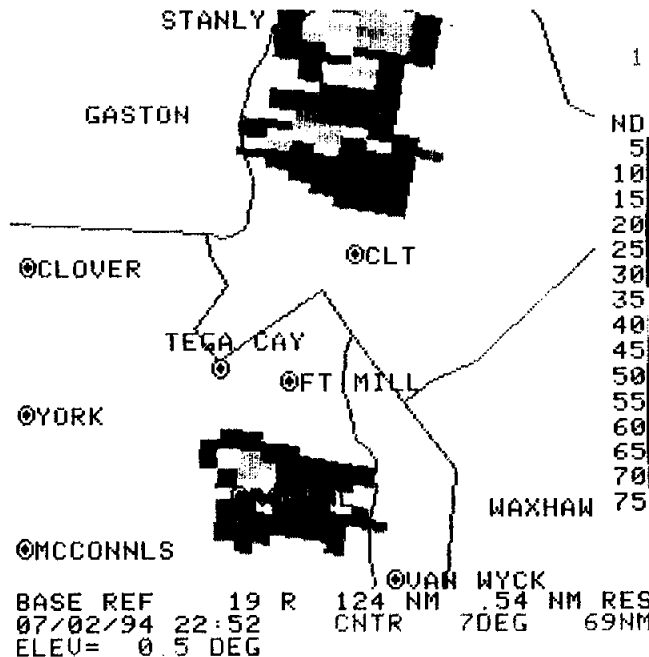
QUAD 3 MAG=8X  
RDA:KCAE 33/56/56N  
344 FT 81/07/08M  
MODE A / 21  
MAX= -41 KT 31 KT  
OUL: M

QUAD 4 MAG=8X  
RDA:KCAE 33/56/56N  
344 FT 81/07/08M  
MODE A / 21  
MAX= -30 KT 34 KT  
OUL: M

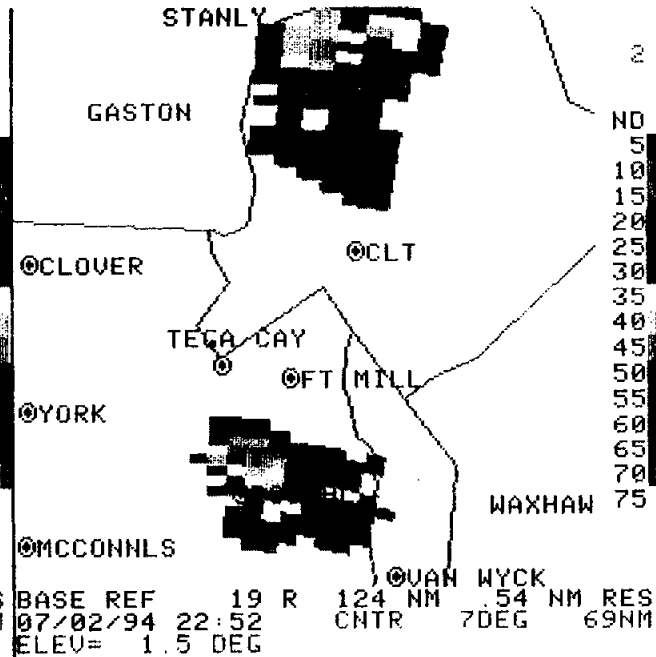
A/R (RDA) 7 DEG  
28809FT 69 NM R  
015 U 1222 R  
NO COMLINE TO SEND  
ALERT DEF. TO RFG  
06/1230 ARCHIVE  
UNIT 1 READ DONE  
HARDCOPY  
HARDCOPY REQUEST  
ACCEPTED



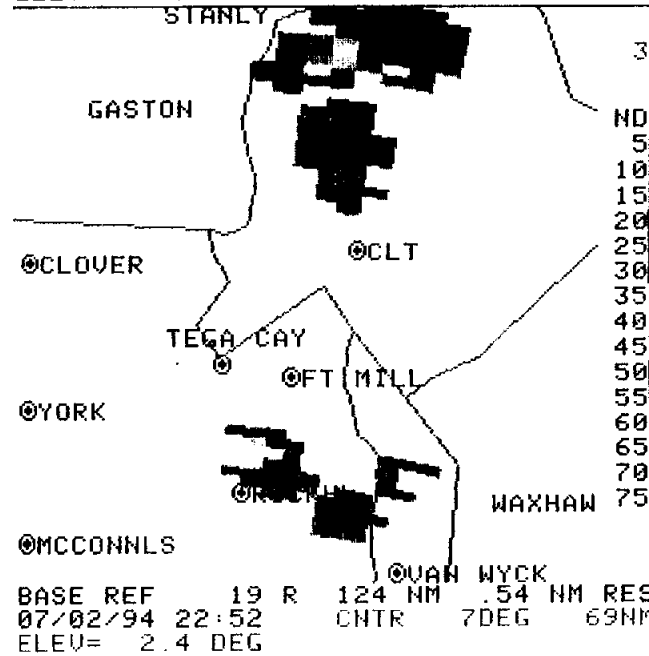
18



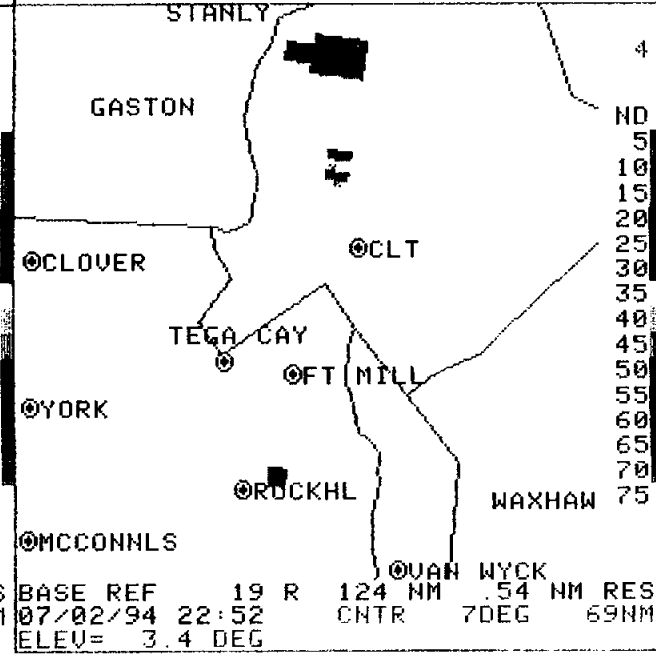
BASE REF 19 R 124 NM .54 NM RES  
 07/02/94 22:52 CNTR 7DEG 69NM  
 ELEV= 0.5 DEG



BASE REF 19 R 124 NM .54 NM RES  
 07/02/94 22:52 CNTR 7DEG 69NM  
 ELEV= 1.5 DEG



BASE REF 19 R 124 NM .54 NM RES  
 07/02/94 22:52 CNTR 7DEG 69NM  
 ELEV= 2.4 DEG



BASE REF 19 R 124 NM .54 NM RES  
 07/02/94 22:52 CNTR 7DEG 69NM  
 ELEV= 3.4 DEG

07/06/94 14:35

2 QUAD 1 MAG=8X  
 RDA:KCAE 33/56/56N  
 344 FT 81/07/08W  
 MODE A / 21  
 MAX= 54 DBZ  
 OUL:HI M

QUAD 2 MAG=8X  
 RDA:KCAE 33/56/56N  
 344 FT 81/07/08W  
 MODE A / 21  
 MAX= 56 DBZ  
 OUL:HI M

QUAD 3 MAG=8X  
 RDA:KCAE 33/56/56N  
 344 FT 81/07/08W  
 MODE A / 21  
 MAX= 55 DBZ  
 OUL:HI M

QUAD 4 MAG=8X  
 RDA:KCAE 33/56/56N  
 344 FT 81/07/08W  
 MODE A / 21  
 MAX= 55 DBZ  
 OUL:HI M

A/R (RDA) 7 DEG  
 28778FT 69 NM  
 Q15 U 1222 R

HARDCOPY  
 HARDCOPY REQUEST  
 ACCEPTED

07/06/94 13:10

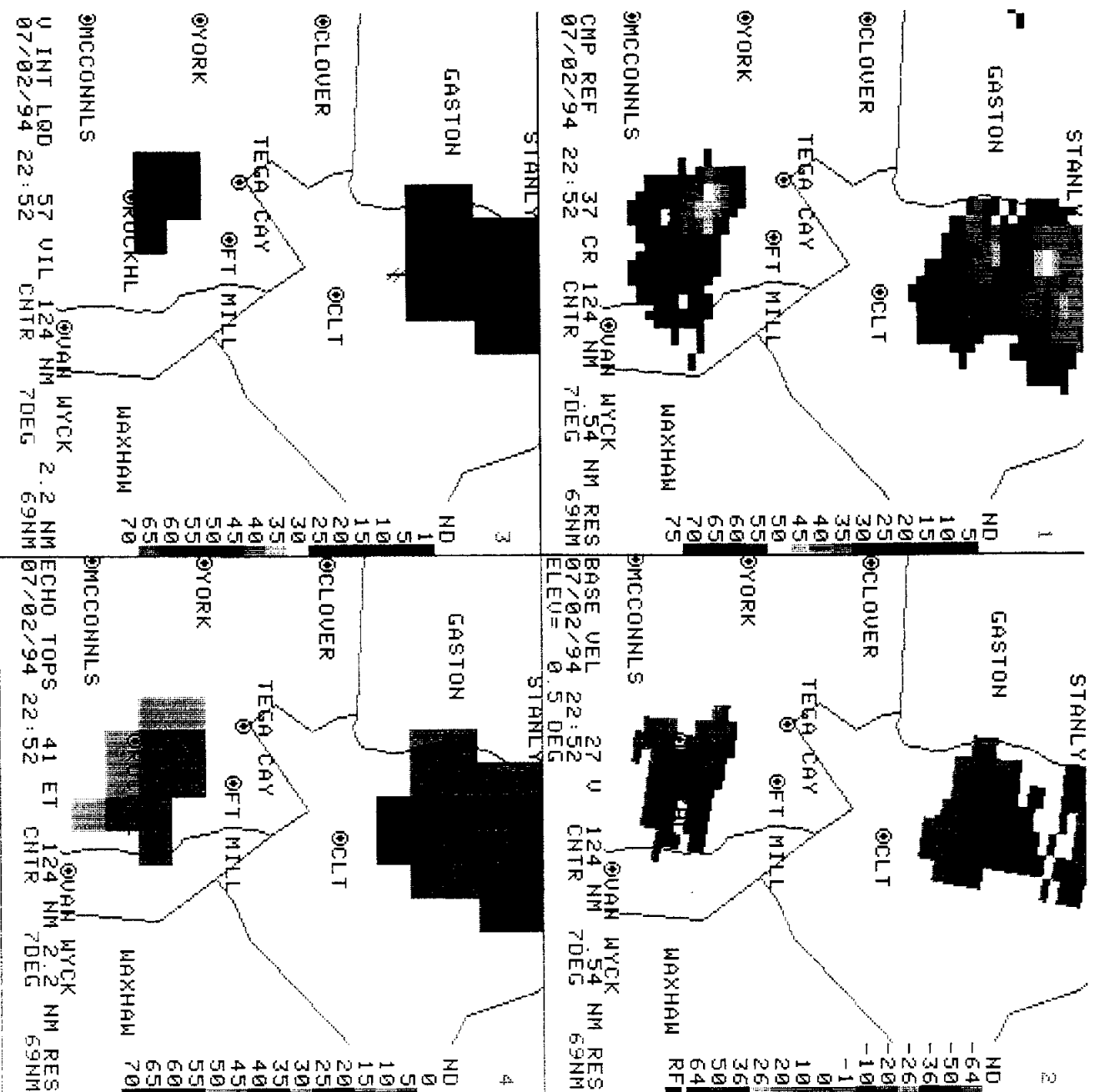
QUAD 1 MAG=8X  
RDA: KCAE 33/55/56N  
344 FT 81/07/08M  
MODE A / 21  
MAX= 58 DBZ  
OUL: ST

QUAD 2 MAG=8X  
RDA: KCAE 33/55/56N  
344 FT 81/07/08M  
MODE A / 21  
MAX= -41 KT 54 KT

QUAD 3 MAG=8X  
RDA: KCAE 33/55/56N  
344 FT 81/07/08M  
MODE A / 21  
MAX= 28 KG/M2  
OUL: HI

QUAD 4 MAG=8X  
RDA: KCAE 33/55/56N  
344 FT 81/07/08M  
MODE A / 21  
MAX= 43 KFT

015 U 1222 R  
HARDCOPY  
HARDCOPY REQUEST  
ACCEPTED



20

STANLY

GASTON

OCLOVER

TEGA CAY

YORK

MCCONNLS

REL UEL MAP 56 SRM 124 NM 70 DEG  
07/02/94 22:52 CTR SRM: 1450 DEG  
ELEV= 0.5 DEG

GASTON

OCLOVER

TEGA CAY

YORK

MCCONNLS

REL UEL MAP 56 SRM 124 NM 70 DEG  
07/02/94 22:52 CTR SRM: 1450 DEG  
ELEV= 2.4 DEG

STANLY

GASTON

OCLOVER

TEGA CAY

YORK

MCCONNLS

REL UEL MAP 56 SRM 124 NM 70 DEG  
07/02/94 22:52 CTR SRM: 1450 DEG  
ELEV= 1.5 DEG

GASTON

OCLOVER

TEGA CAY

YORK

MCCONNLS

REL UEL MAP 56 SRM 124 NM 70 DEG  
07/02/94 22:52 CTR SRM: 1450 DEG  
ELEV= 3.4 DEG

07/06/94 13:11  
QUAD 1 MAG=8X  
RDA: KCAE 33/56/56N  
344 FT 81/07/08W  
MODE A / 21  
MAX= -34 KT 61 KT  
OUL: M

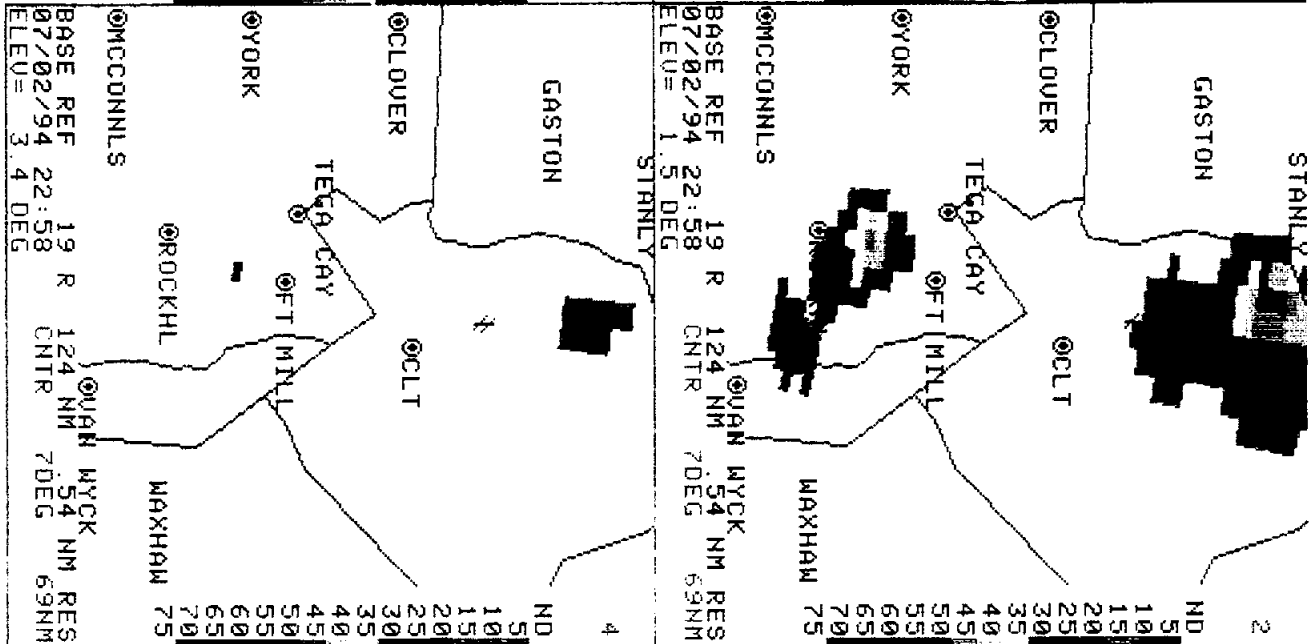
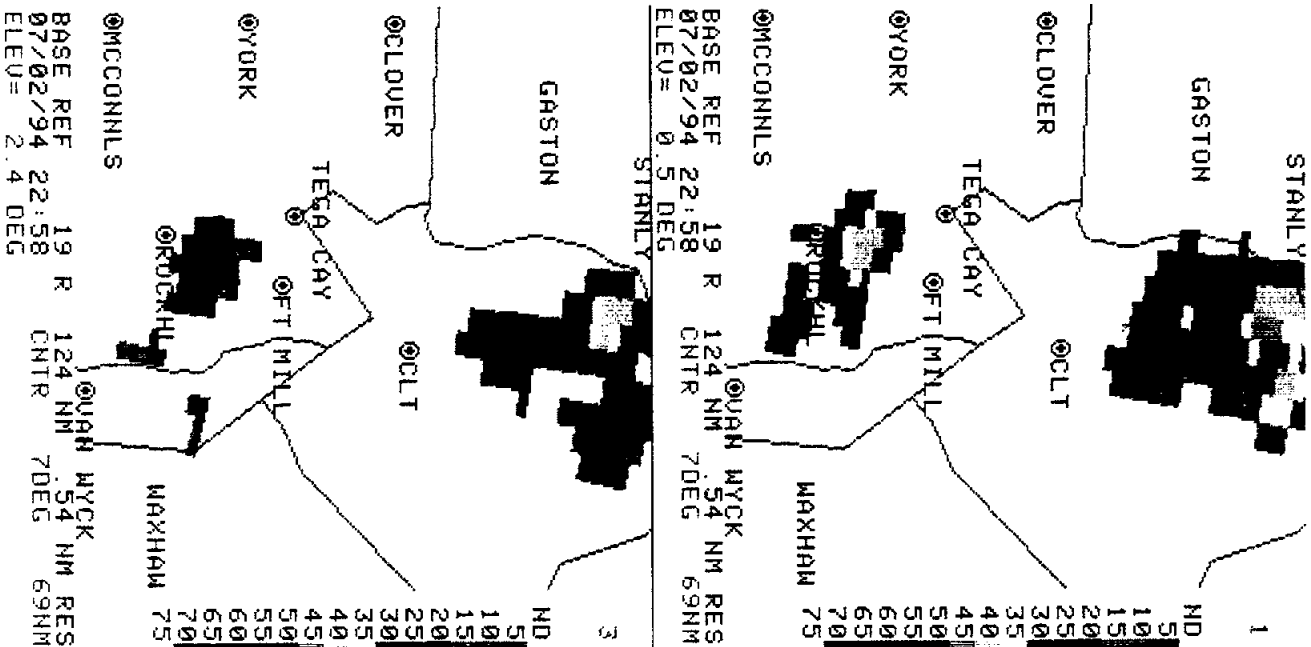
QUAD 2 MAG=8X  
RDA: KCAE 33/56/56N  
344 FT 81/07/08W  
MODE A / 21  
MAX= -31 KT 36 KT  
OUL: M

QUAD 3 MAG=8X  
RDA: KCAE 33/56/56N  
344 FT 81/07/08W  
MODE A / 21  
MAX= -29 KT 32 KT  
OUL: M

QUAD 4 MAG=8X  
RDA: KCAE 33/56/56N  
344 FT 81/07/08W  
MODE A / 21  
MAX= -41 KT 29 KT  
OUL: M

A/R (RDA) 7 DEG  
28809FT 69 NM  
015 U 1222 R  
NO COMLINE TO SEND  
22 ALERT DEF 10 RPG  
06/1230 ARCHIVE  
40 UNIT 1 READ DONE  
HARD COPY  
HARD COPY  
HARD COPY REQUEST  
ACCEPTED

21



07/06/94 15:08

QUAD 1 MAG=8X  
 RDA: KCAE 33/56/56N  
 344 FT 81/07/08W  
 MODE A / 21  
 MAX= 53 DBZ  
 OUL: HI M

QUAD 2 MAG=8X  
 RDA: KCAE 33/56/56N  
 344 FT 81/07/08W  
 MODE A / 21  
 MAX= 57 DBZ  
 OUL: HI M

QUAD 3 MAG=8X  
 RDA: KCAE 33/56/56N  
 344 FT 81/07/08W  
 MODE A / 21  
 MAX= 57 DBZ  
 OUL: HI M

QUAD 4 MAG=8X  
 RDA: KCAE 33/56/56N  
 344 FT 81/07/08W  
 MODE A / 21  
 MAX= 55 DBZ  
 OUL: HI M

A/R (RDA) 7 DEG  
 28778FT 69 NM  
 015 U 1222 R

06/1440 HARDCOPY  
 RIBBON USED UP  
 HARDCOPY  
 HARDCOPY REQUEST  
 ACCEPTED

22

07/06/94 13:12

STANLY  
GASTON  
1  
ND 5  
10  
15  
20  
25  
30  
35  
40  
45  
50  
55  
60  
65  
70  
75

QUAD 1 MAG=8X  
RDA:KCAE 33/56/56N  
344 FT 81/07/08W  
MODE A / 21  
MAX= 61 DBZ  
OUL:ST

STANLY  
GASTON  
2  
ND 10  
15  
20  
25  
30  
35  
40  
45  
50  
55  
60  
65  
70  
75

QUAD 2 MAG=8X  
RDA:KCAE 33/56/56N  
344 FT 81/07/08W  
MODE A / 21  
MAX= -51 KT 36 KT

STANLY  
GASTON  
3  
ND 10  
15  
20  
25  
30  
35  
40  
45  
50  
55  
60  
65  
70  
75

QUAD 3 MAG=8X  
RDA:KCAE 33/56/56N  
344 FT 81/07/08W  
MODE A / 21  
MAX= 31 KG/M2  
OUL:HI

STANLY  
GASTON  
4  
ND 0  
5  
10  
15  
20  
25  
30  
35  
40  
45  
50  
55  
60  
65  
70

QUAD 4 MAG=8X  
RDA:KCAE 33/56/56N  
344 FT 81/07/08W  
MODE A / 21  
MAX= 34 KFT

STANLY  
GASTON  
3  
ND 10  
15  
20  
25  
30  
35  
40  
45  
50  
55  
60  
65  
70

STANLY  
GASTON  
4  
ND 0  
5  
10  
15  
20  
25  
30  
35  
40  
45  
50  
55  
60  
65  
70

015 U 1222 R

HARD COPY  
HARD COPY REQUEST  
ACCEPTED

23



07/06/94 13:14

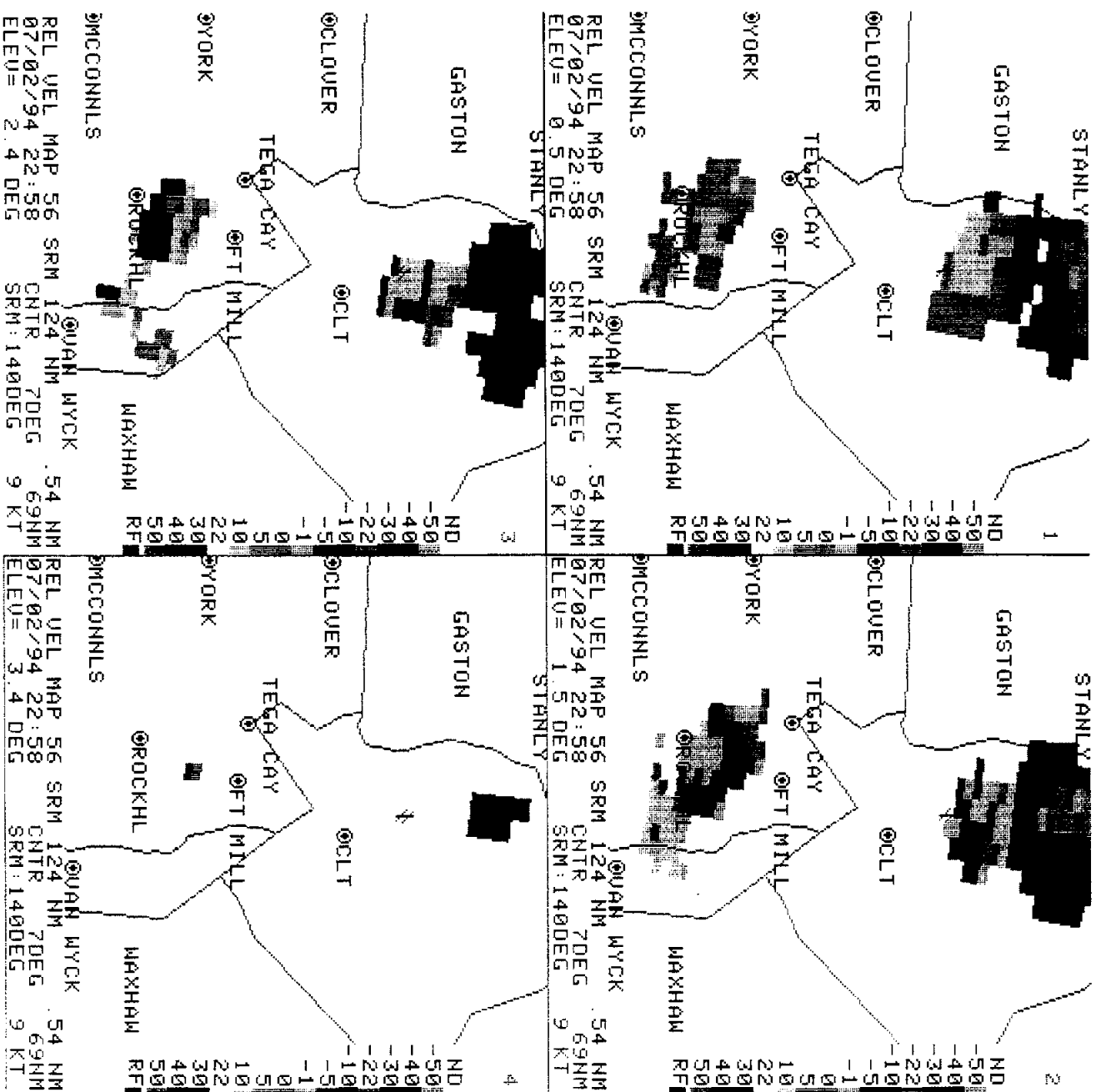
QUAD 1 MAG=8X  
RDA:KCAE 33/56/56N  
344 FT 81/07/08W  
MODE A / 21  
MAX= -45 KT 38 KT  
OUL: M

QUAD 2 MAG=8X  
RDA:KCAE 33/56/56N  
344 FT 81/07/08W  
MODE A / 21  
MAX= -34 KT 32 KT  
OUL: M

QUAD 3 MAG=8X  
RDA:KCAE 33/56/56N  
344 FT 81/07/08W  
MODE A / 21  
MAX= -46 KT 31 KT  
OUL: M

QUAD 4 MAG=8X  
RDA:KCAE 33/56/56N  
344 FT 81/07/08W  
MODE A / 21  
MAX= -42 KT 32 KT  
OUL: M

A/R (RDA) 7 DEG  
28809FT 69 NM R  
015 U 1222  
NO COMLINE TO SEND  
ALERT DEF TO RPG  
06/1230 ARCHIVE  
UNIT 1 READ DONE  
HARDCOPY  
HARDCOPY REQUEST  
ACCEPTED



24

07/06/94 15:06

QUAD 1 MAG=8X  
RDA:KCAE 33/56/56N  
344 FT 81/07/08M  
MODE A /  
MAX= 56 DBZ 21  
DUL: HI M

QUAD 2 MAG=8X  
RDA:KCAE 33/56/56N  
344 FT 81/07/08M  
MODE A /  
MAX= 54 DBZ 21  
DUL: HI M

QUAD 3 MAG=8X  
RDA:KCAE 33/56/56N  
344 FT 81/07/08M  
MODE A /  
MAX= 57 DBZ 21  
DUL: HI M

QUAD 4 MAG=8X  
RDA:KCAE 33/56/56N  
344 FT 81/07/08M  
MODE A /  
MAX= 55 DBZ 21  
DUL: HI M

A/R (RDA) 2 DEG  
28778FT 69 NM  
015 U 1222 R

06/1440 HARDCOPY  
RIBBON USED UP  
HARDCOPY  
HARDCOPY REQUEST  
ACCEPTED

STANLY

GASTON

OCLOVER

TEGA CAY

OYORK

McCONNLS

BASE REF 19 R 124 NM  
07/02/94 23:04 CNTR 70 DEG  
ELEV= 0.5 DEG  
QUAN WYCK 54 NM RES  
69NM

GASTON

OCLOVER

TEGA CAY

OYORK

McCONNLS

BASE REF 19 R 124 NM  
07/02/94 23:04 CNTR 70 DEG  
ELEV= 2.4 DEG  
QUAN WYCK 54 NM RES  
69NM

STANLY

GASTON

OCLOVER

TEGA CAY

OYORK

McCONNLS

BASE REF 19 R 124 NM  
07/02/94 23:04 CNTR 70 DEG  
ELEV= 1.5 DEG  
QUAN WYCK 54 NM RES  
69NM

GASTON

OCLOVER

TEGA CAY

OYORK

McCONNLS

BASE REF 19 R 124 NM  
07/02/94 23:04 CNTR 70 DEG  
ELEV= 3.4 DEG  
QUAN WYCK 54 NM RES  
69NM

STANLY

GASTON

OCLOVER

TEGA CAY

OYORK

McCONNLS

BASE REF 19 R 124 NM  
07/02/94 23:04 CNTR 70 DEG  
ELEV= 1.5 DEG  
QUAN WYCK 54 NM RES  
69NM

GASTON

OCLOVER

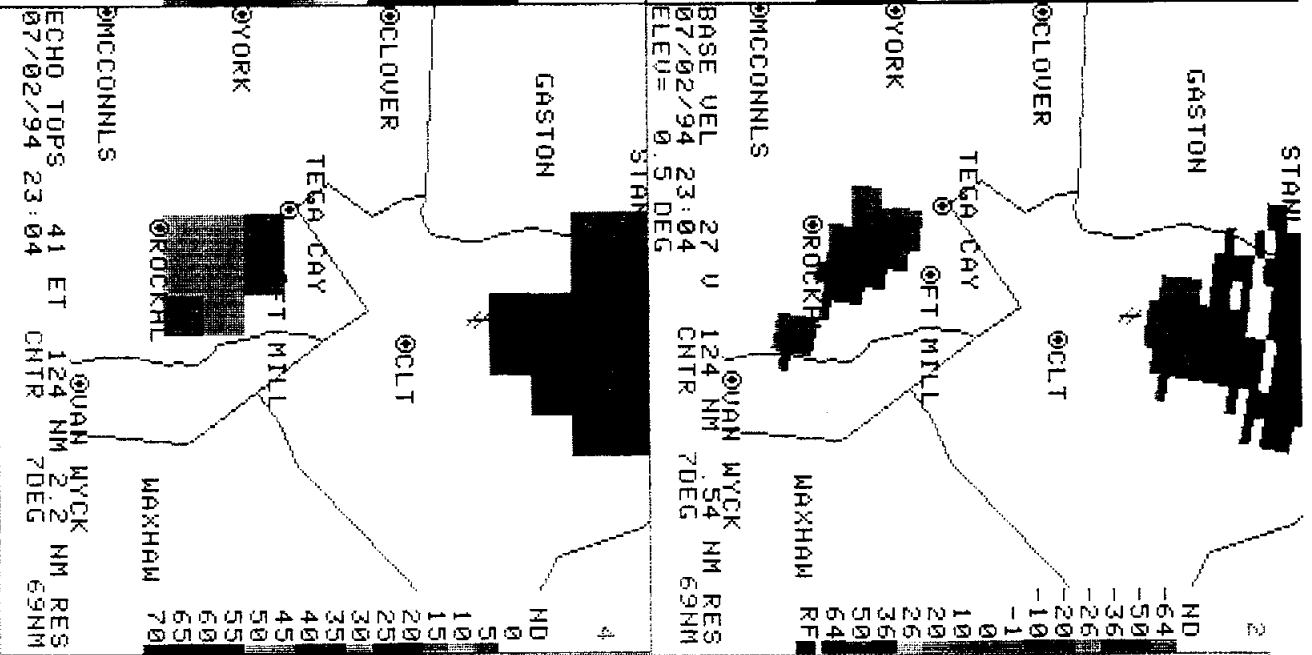
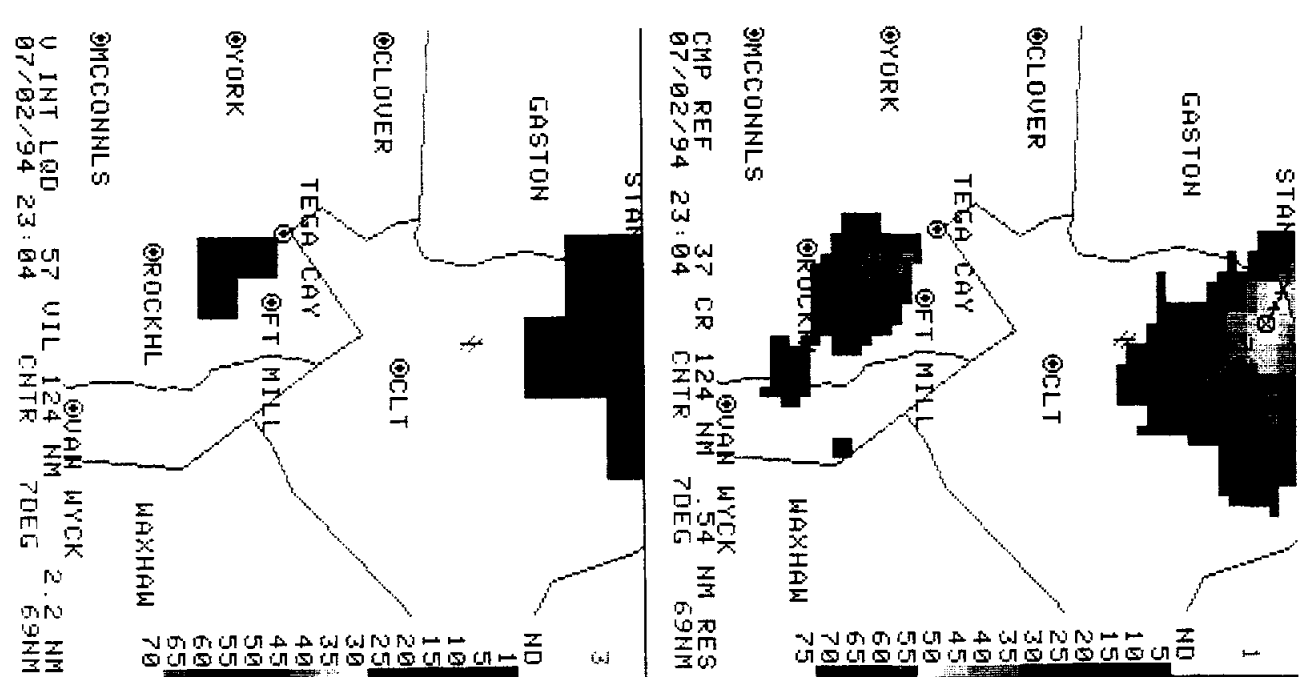
TEGA CAY

OYORK

McCONNLS

BASE REF 19 R 124 NM  
07/02/94 23:04 CNTR 70 DEG  
ELEV= 3.4 DEG  
QUAN WYCK 54 NM RES  
69NM

25



07/06/94 13:15  
 QUAD 1 MAG=8X  
 RDA:KCAE 33/56/56N  
 344 FT 81/07/08M  
 MODE A / 21  
 MAX= 58 DBZ  
 OUL:ST

QUAD 2 MAG=8X  
 RDA:KCAE 33/56/56N  
 344 FT 81/07/08M  
 MODE A / 21  
 MAX= -44 KT 34 KT

QUAD 3 MAG=8X  
 RDA:KCAE 33/56/56N  
 344 FT 81/07/08M  
 MODE A / 21  
 MAX= 30 KG/M2  
 OUL:HI

QUAD 4 MAG=8X  
 RDA:KCAE 33/56/56N  
 344 FT 81/07/08M  
 MODE A / 21  
 MAX= 32 KFT

015 U 1222 R  
 HARDCOPY  
 HARDCOPY REQUEST  
 ACCEPTED

26

07/06/94 13:17

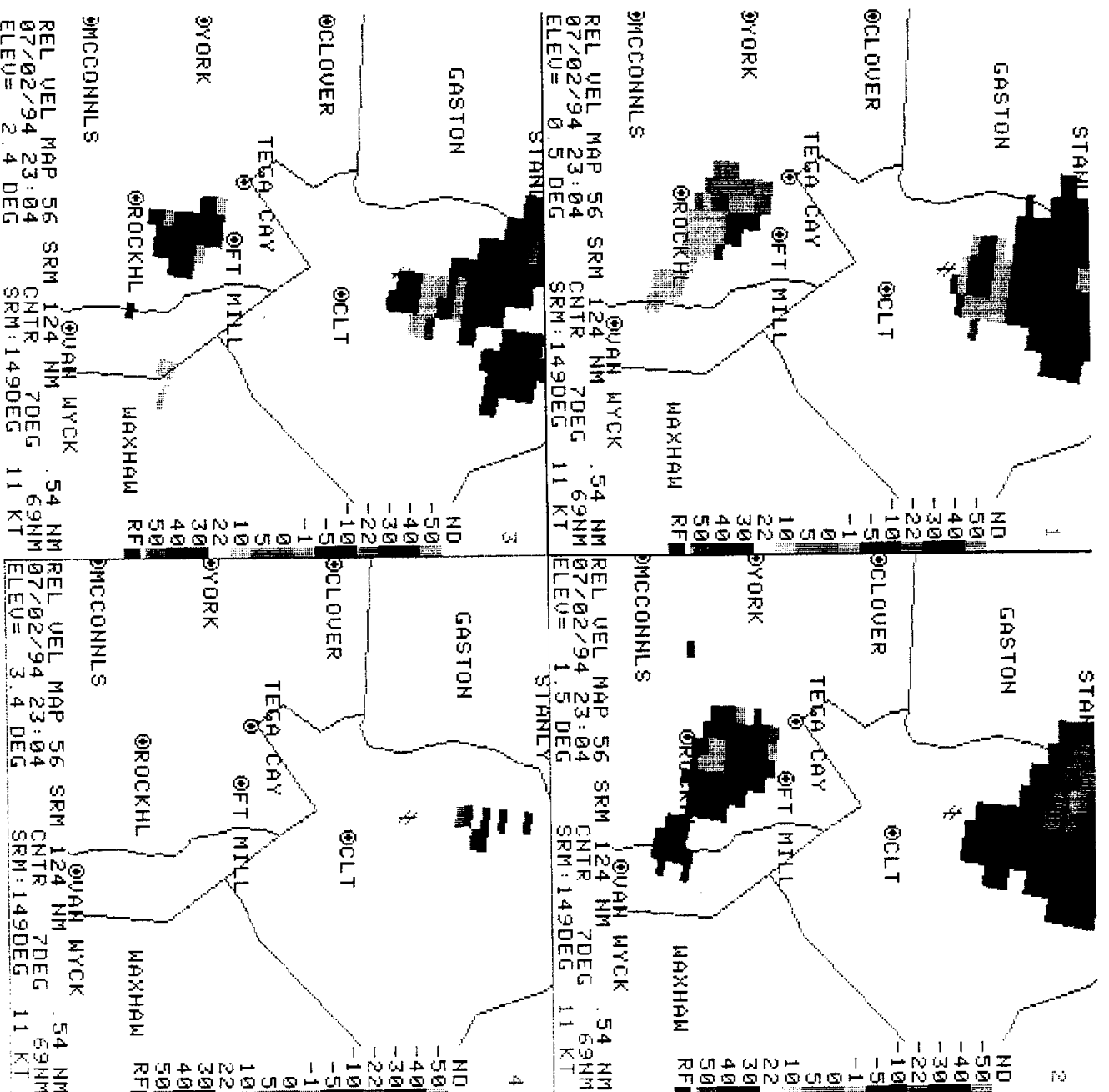
QUAD 1 MAG=8X  
RDA:KCAE 33/56/56N  
344 FT / 81/07/08M  
MODE A / 21  
MAX=-42 KT 32 KT  
OUL: M

QUAD 2 MAG=8X  
RDA:KCAE 33/56/56N  
344 FT / 81/07/08M  
MODE A / 21  
MAX=-32 KT 40 KT  
OUL: M

QUAD 3 MAG=8X  
RDA:KCAE 33/56/56N  
344 FT / 81/07/08M  
MODE A / 21  
MAX=-35 KT 32 KT  
OUL: M

QUAD 4 MAG=8X  
RDA:KCAE 33/56/56N  
344 FT / 81/07/08M  
MODE A / 21  
MAX=-40 KT 27 KT  
OUL: M

A/R (RDA) 7 DEG  
28809FT 69 NM  
015 U 1222 R  
NO COMLINE TO SEND  
ALERT DEF TO RPG  
06/1230 ARCHIVE  
UNIT 1 READ DONE  
HARDCOPY  
HARDCOPY REQUEST  
ACCEPTED



27