

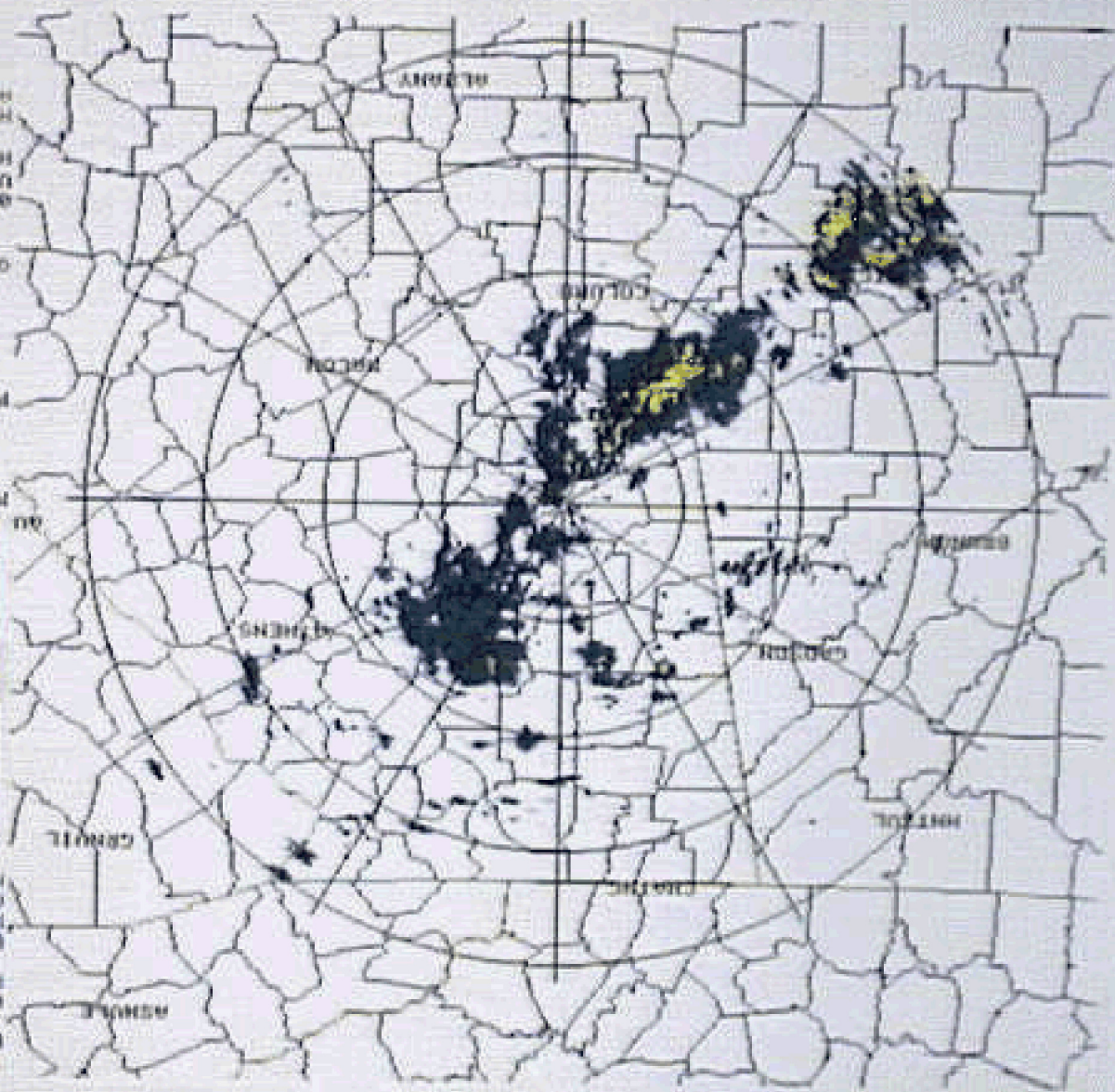
ACCEPTED
HARDWARE REQUEST
HARD COPY
UNIT 1 READ DONE
02/0028 ARCHIVE

QUEUE EMPTY

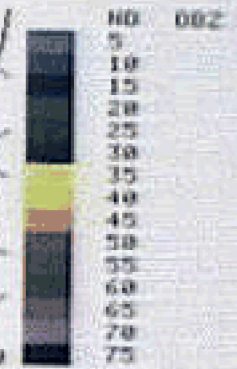
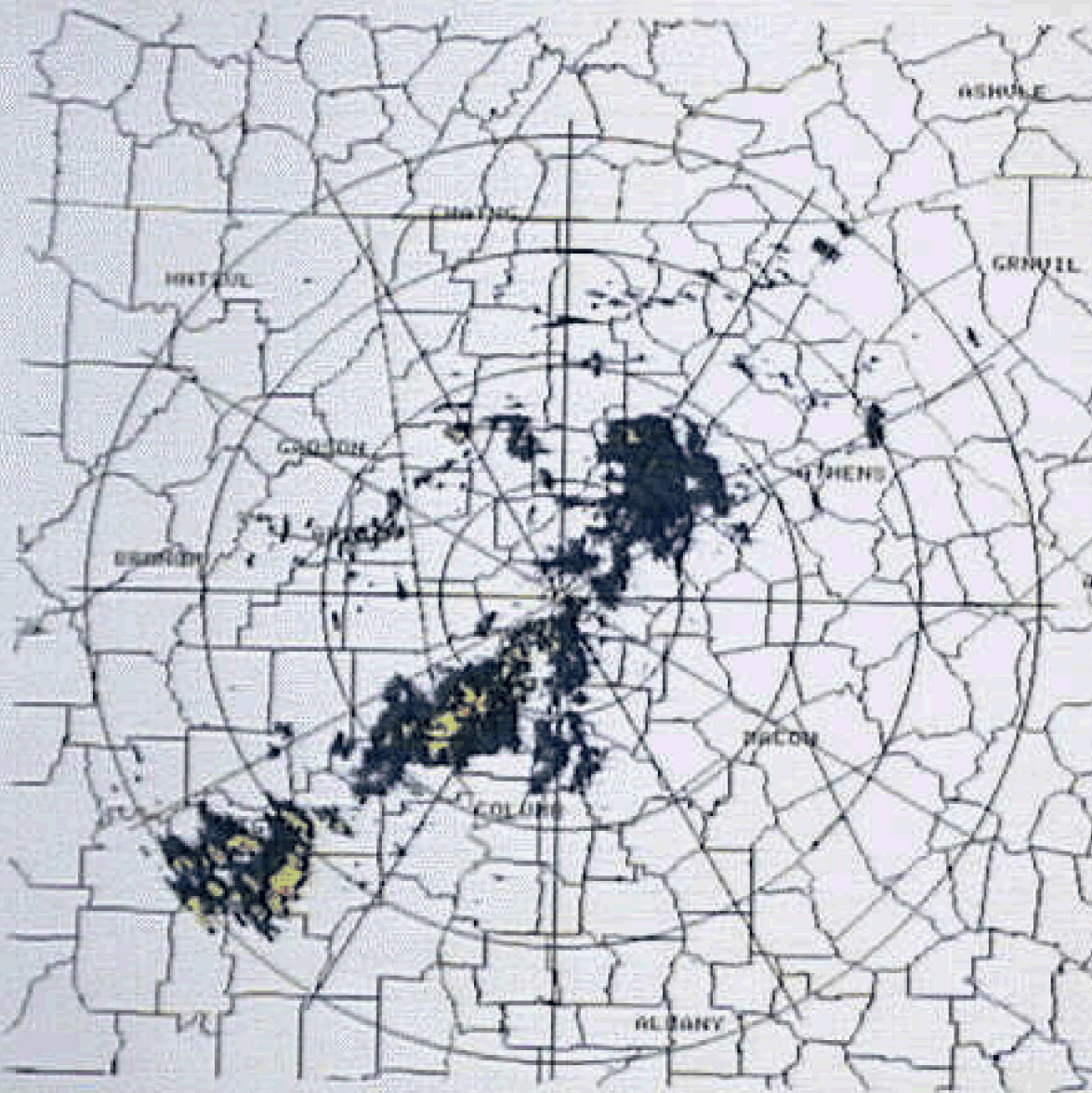
FORMER-30 NR 30 DEC

MAG-10 FL-1 COM-1

10/03/95 08:37
PAGE REF 19 4
124 NR 54 NR RES
08/21/95 16:41
804-REC 11/21/45H
804-REC 11/21/45H
322 FT 04/11/52H
ELEV+ 0.5 DEC
MODE # 21
CNR 0025 00H
MAG- 51 087



18-03-95 00-59
 BASE REF 19 E
 124 NH 54 NH RES
 88-21/95 16-47
 RDN-KFPC 23/21/40N
 972 FT 04/13/57W
 ELEV= 9 3 DEG
 MODE= / 21
 CNTR 0DEC 0NH
 MAX= 51 DBZ



RAQ=1X FL= 1 COR=1

POLAR=30 NH 30 DEG

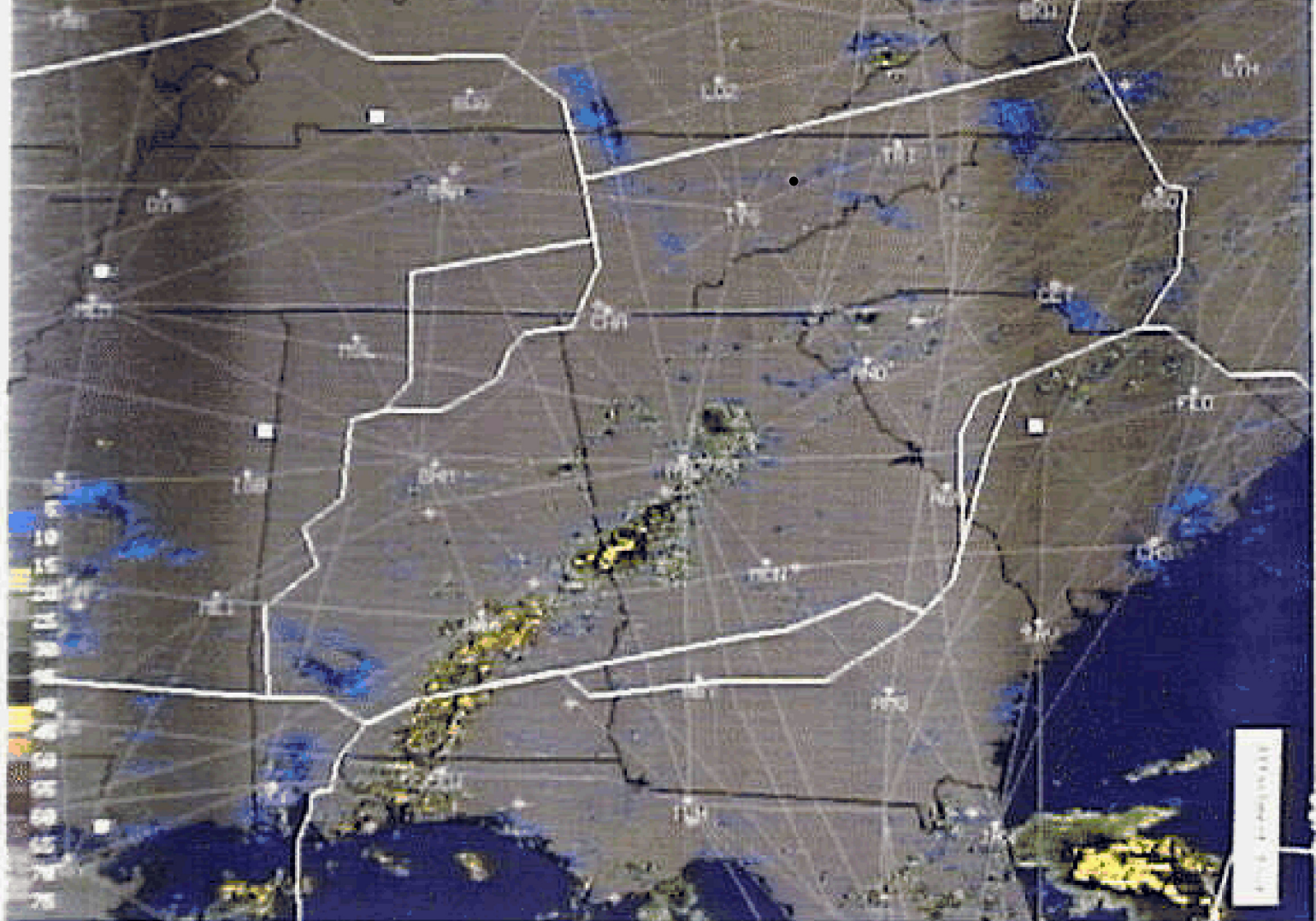
QUEUE EMPTY

03/0030 ARCHIVE
UNIT 1 READ DONE
HARDCOPY

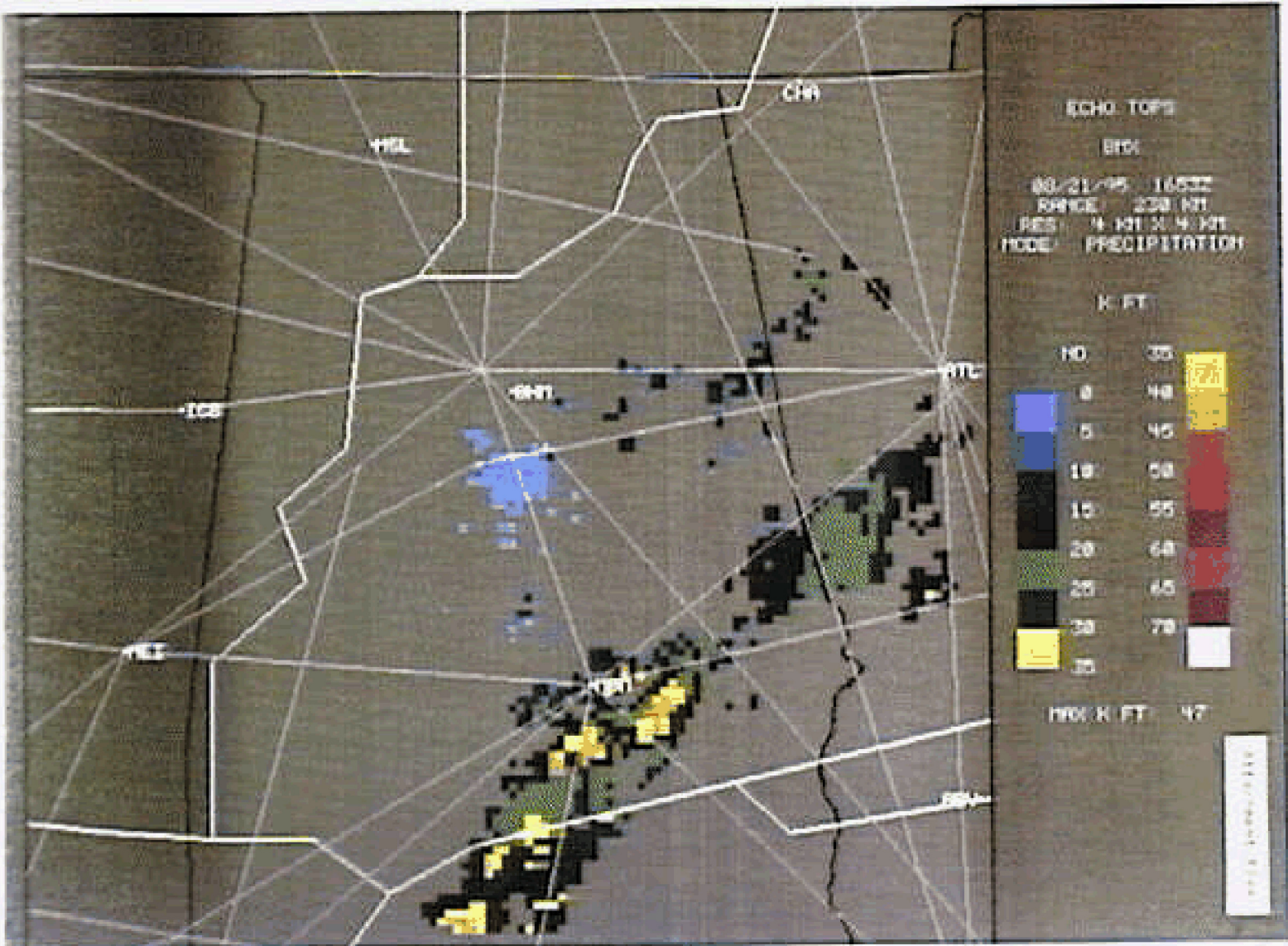
HARDCOPY REQUEST
ACCEPTED

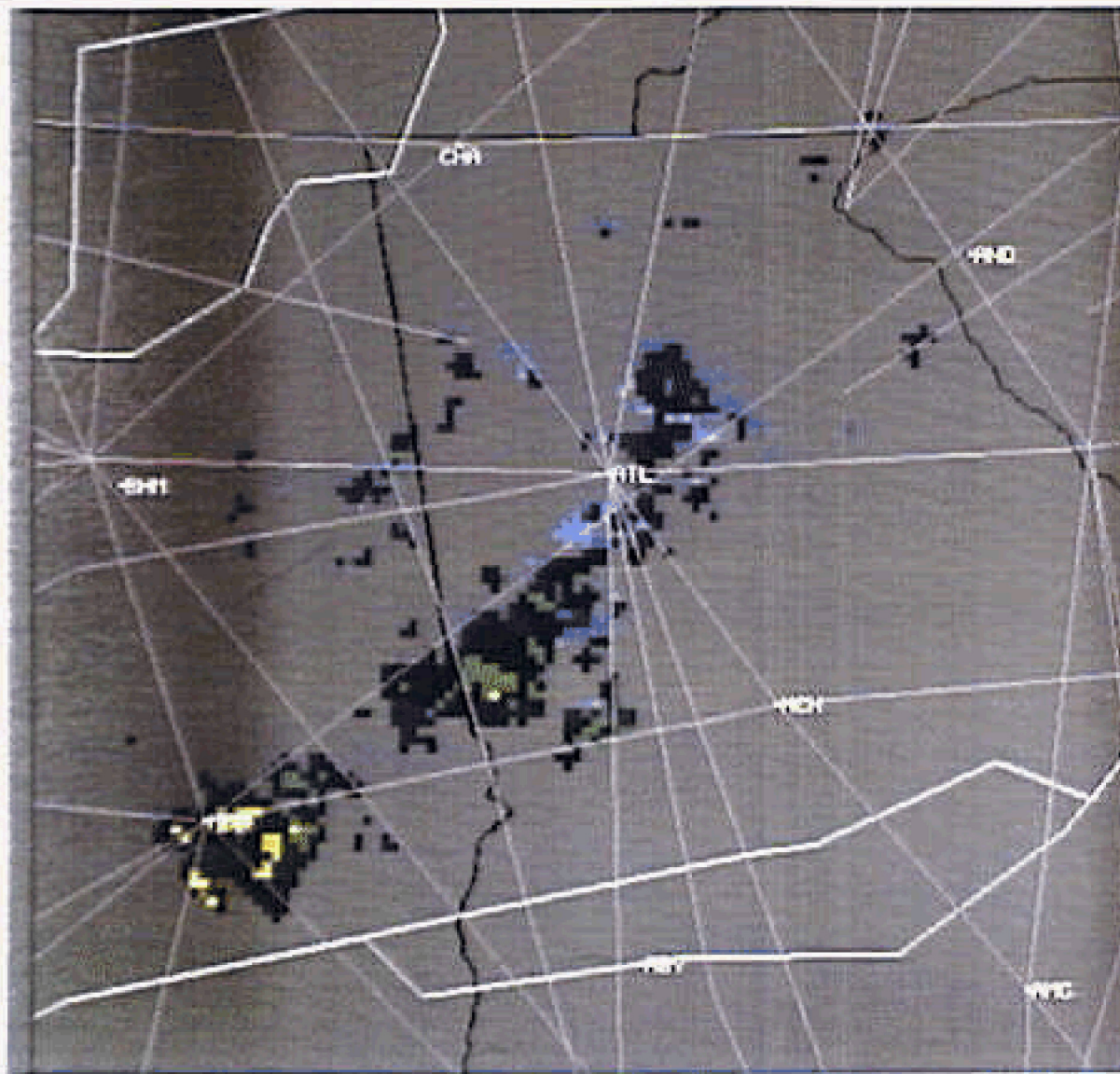
Attachment Three

01 2in Radar mosaic: NOAA/NCEP Sector 18195 21-Aug-06



NOAA/NCEP





ECHO TOPS

FFC

08/21/95 1459Z

RANGE: 230 NM

RES: 4 NM X 4 NM

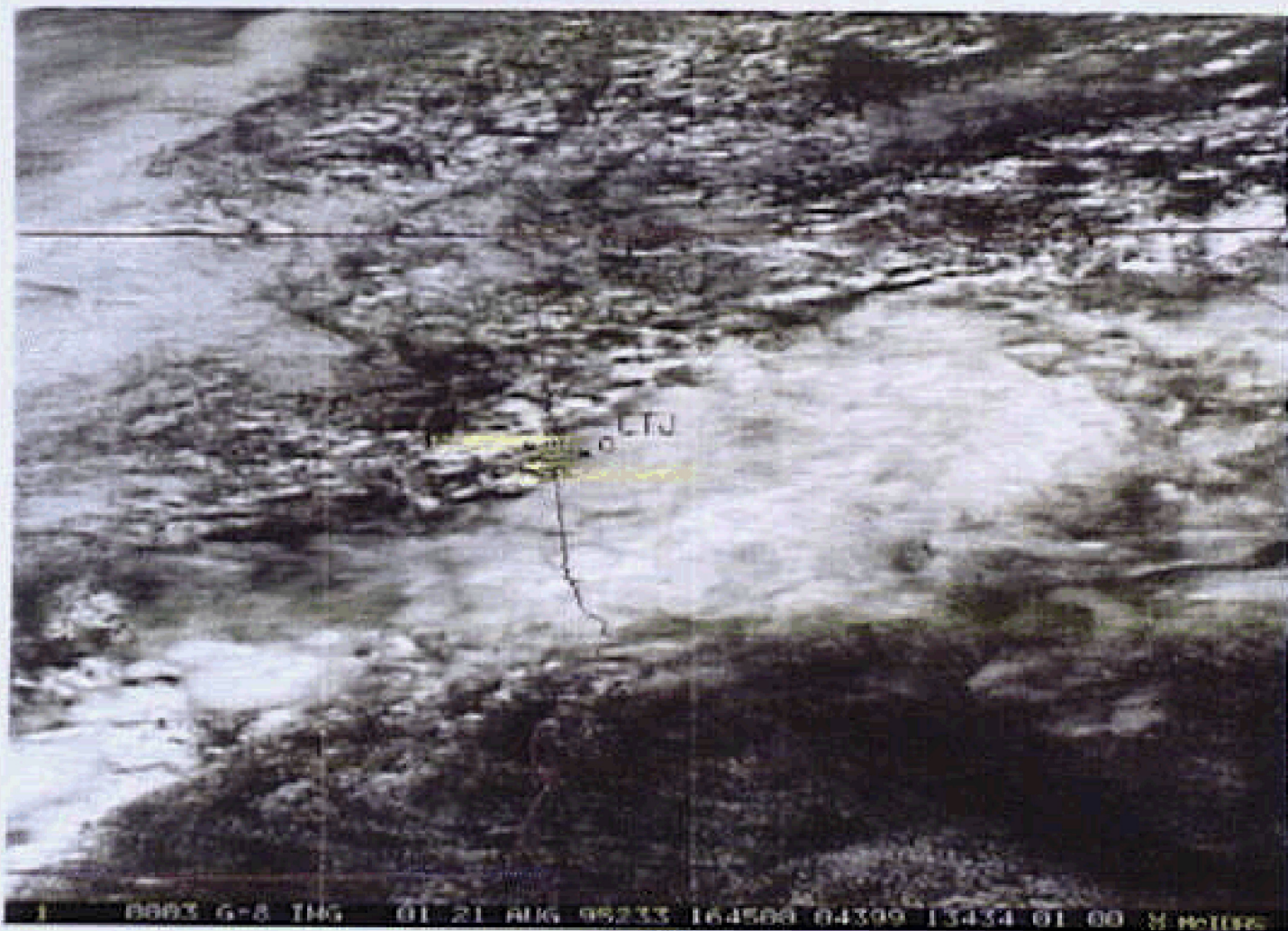
MODE: PRECIPITATION

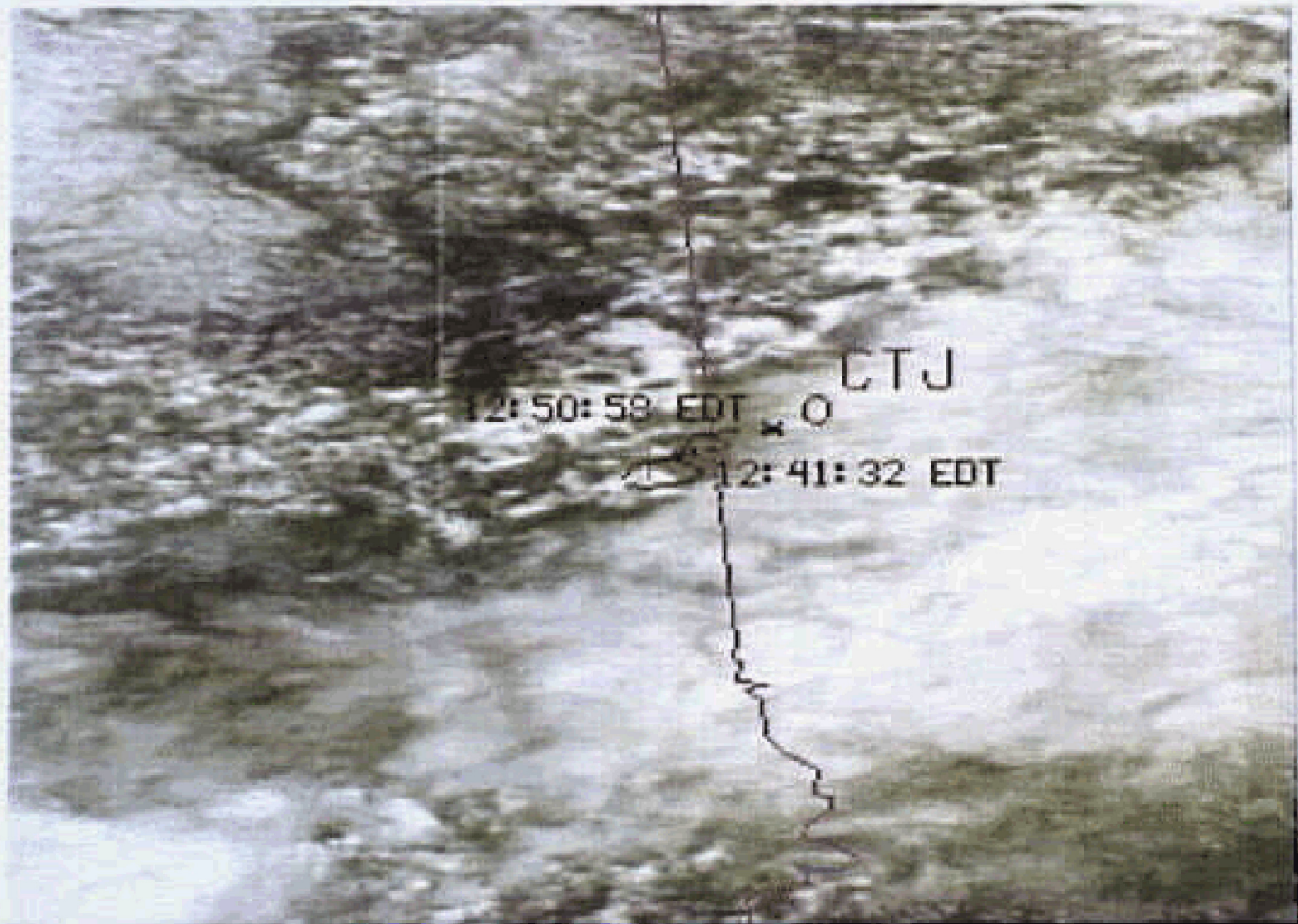
H FT



MAX H FT: 44

11/1/95 14:59Z
 230 NM
 4 NM X 4 NM
 PRECIPITATION





12:50:58 EDT x O CTJ

12:41:32 EDT

