

**Meteorology Group Chairman Factual Report**

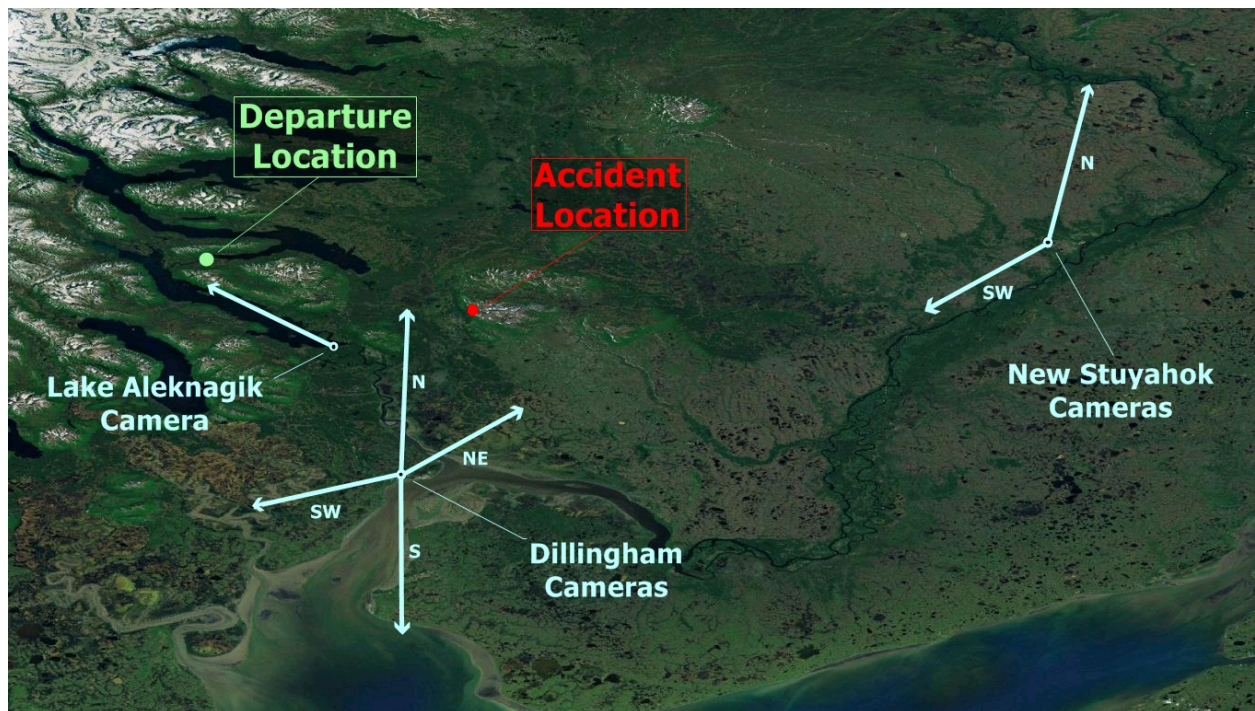
**Attachment 2 - Weather Camera images**

**ANC10MA068**

## Attachment 1 – Weather Cameras

Four weather cameras were positioned at Dillingham (elevation 86 feet): North-facing (002°), Northeast-facing (043°), South-facing (180°) and Southwest-facing (247°). Two weather cameras were positioned at New Stuyahok (elevation 348 feet): North-facing (008°) and Southwest-facing (224°). One camera was positioned at Lake Aleknagik (elevation approximately 40 feet): Northwest-facing (approximately 315°).

“Clear day” images are provided for each camera and direction for reference.



**Figure 1** – Weather camera positions with approximate viewing directions (blue arrows). Length of arrows do not indicate distance viewable from camera images in any conditions.



**Figure 2** – A clear day image from the Dillingham North-facing camera.

Mon Aug 09 22:02:08 2010



**Figure 3** – Dillingham North-facing camera. Image taken at 1402 ADT.



Mon Aug 09 22:12:04 2010

**Figure 4** – Dillingham North-facing camera. Image taken at 1412 ADT.

Mon Aug 09 22:21:58 2010



**Figure 5** – Dillingham North-facing camera. Image taken at 1421 ADT.

Mon Aug 09 22:31:53 2010



**Figure 6** – Dillingham North-facing camera. Image taken at 1431 ADT.



**Figure 7** – Dillingham North-facing camera. Image taken at 1442 ADT.





**Figure 8** – Dillingham North-facing camera. Image taken at 1452 ADT.



Figure 9 – A clear day image from the Dillingham Northeast-facing camera.



**Figure 10** – Dillingham Northeast-facing camera. Image taken at 1400 ADT.



**Figure 11** – Dillingham Northeast-facing camera. Image taken at 1410 ADT.



**Figure 12** – Dillingham Northeast-facing camera. Image taken at 1420 ADT.



**Figure 13** – Dillingham Northeast-facing camera. Image taken at 1430 ADT.



**Figure 14** – Dillingham Northeast-facing camera. Image taken at 1440 ADT.

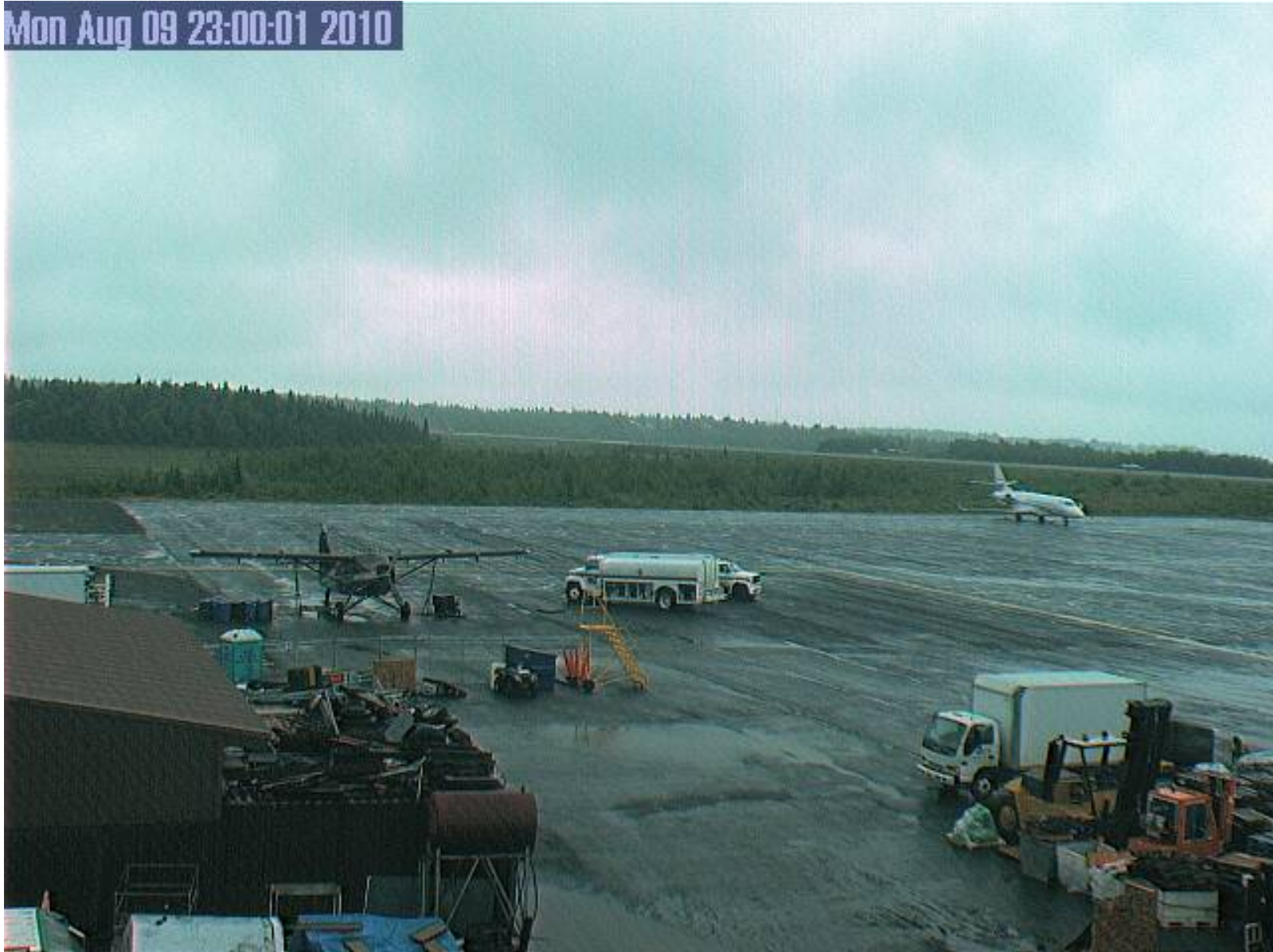
Mon Aug 09 22:50:04 2010



Figure 15 – Dillingham Northeast-facing camera. Image taken at 1450 ADT.



Mon Aug 09 23:00:01 2010



**Figure 16** – Dillingham Northeast-facing camera. Image taken at 1500 ADT.



**Figure 17** – A clear day image from the Dillingham South-facing camera.



**Figure 18** – Dillingham South-facing camera. Image taken at 1357 ADT.



**Figure 19** – Dillingham South-facing camera. Image taken at 1408 ADT.



**Figure 20** – Dillingham South-facing camera. Image taken at 1418 ADT.

Mon Aug 09 22:28:01 2010



**Figure 21** – Dillingham South-facing camera. Image taken at 1428 ADT.



**Figure 22** – Dillingham South-facing camera. Image taken at 1438 ADT.

Mon Aug 09 22:48:17 2010



**Figure 23** – Dillingham South-facing camera. Image taken at 1448 ADT.





**Figure 24** – Dillingham South-facing camera. Image taken at 1458 ADT.



Figure 25 – A clear day image from the Dillingham Southwest-facing camera.



**Figure 26** – Dillingham Southwest-facing camera. Image taken at 1354 ADT.



**Figure 27** – Dillingham Southwest-facing camera. Image taken at 1404 ADT.



**Figure 28** – Dillingham Southwest-facing camera. Image taken at 1414 ADT.



**Figure 29** – Dillingham Southwest-facing camera. Image taken at 1424 ADT.



**Figure 30** – Dillingham Southwest-facing camera. Image taken at 1434 ADT.



**Figure 31**– Dillingham Southwest-facing camera. Image taken at 1444 ADT.

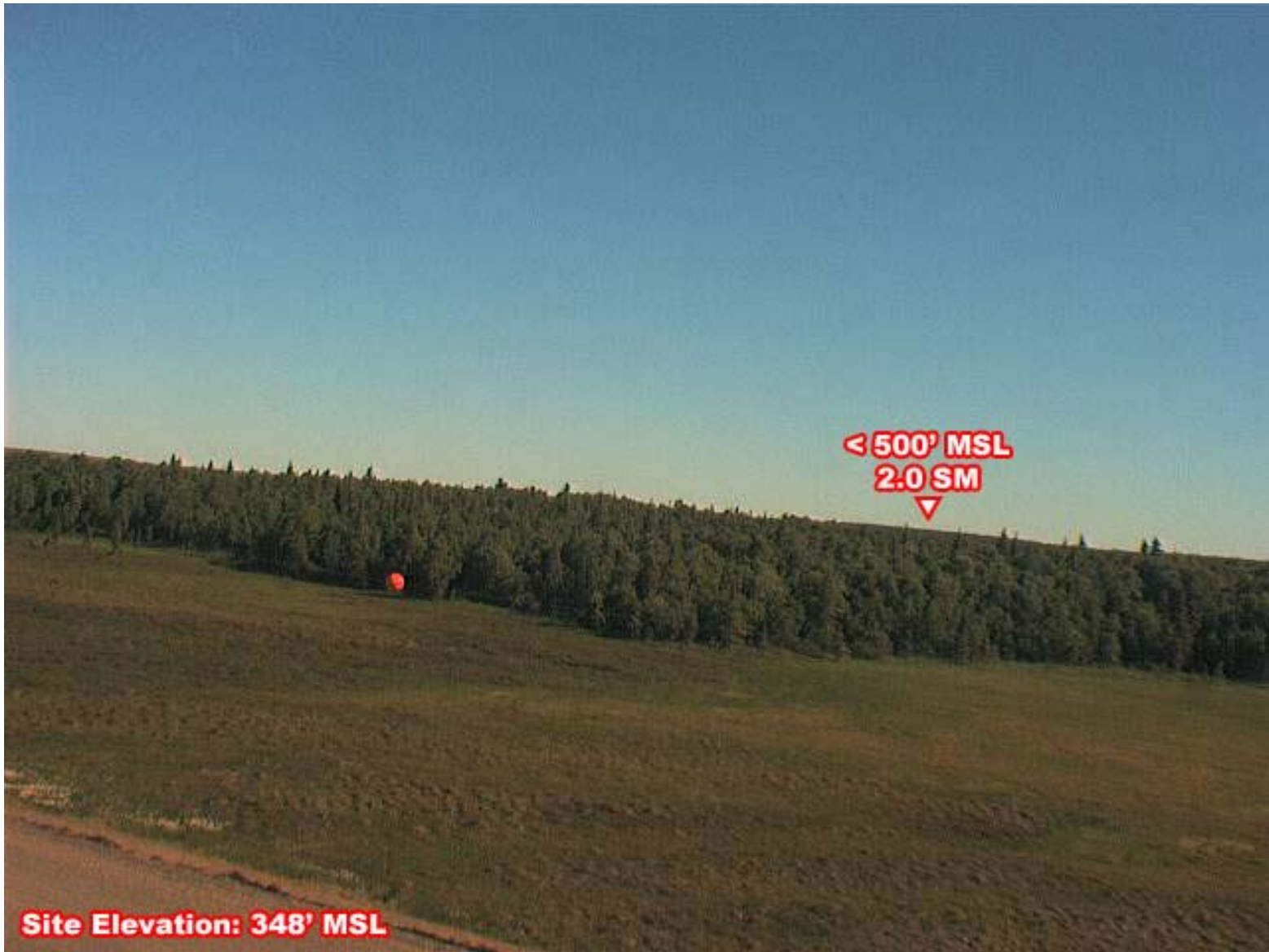




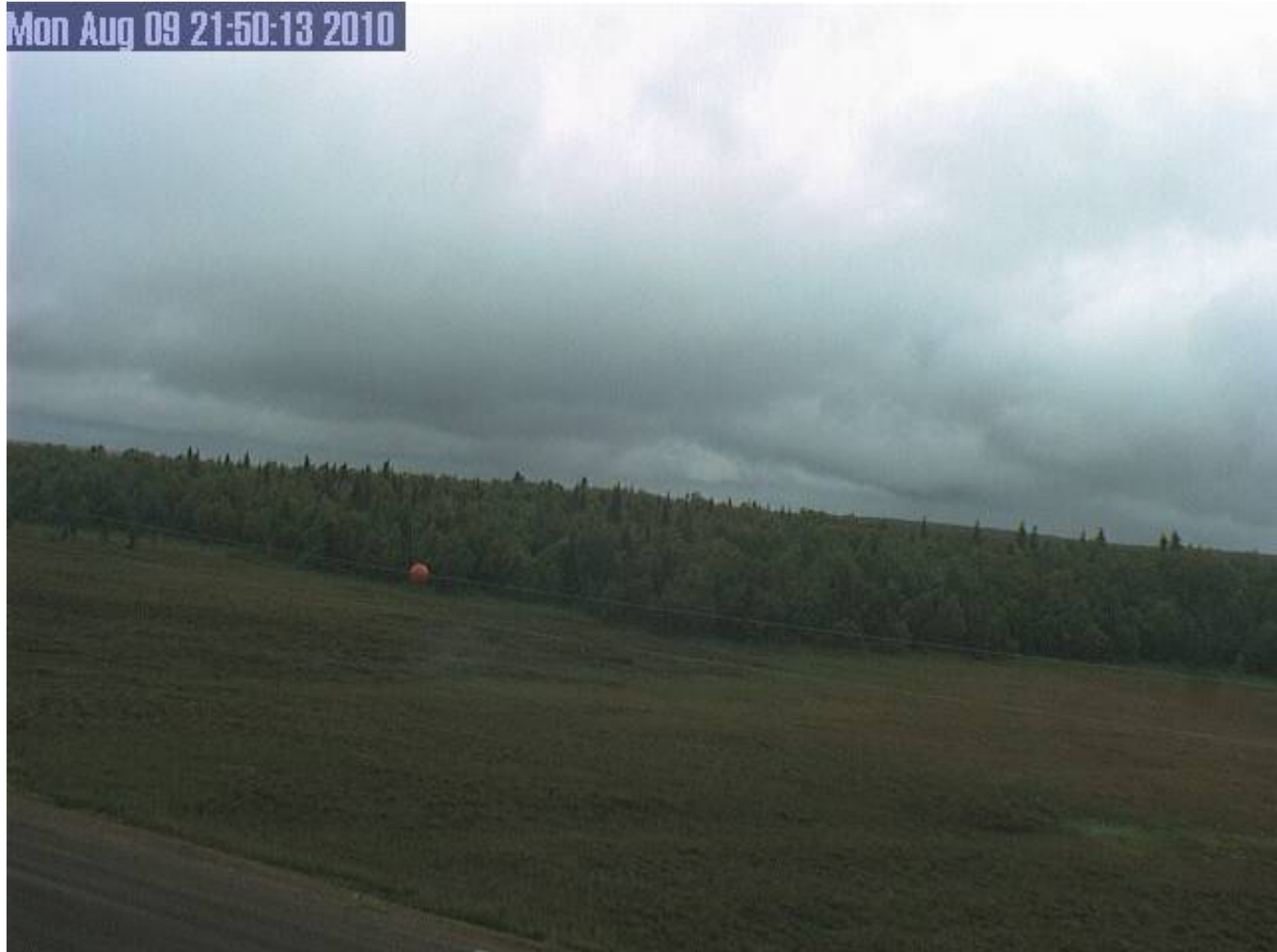
**Figure 32** – Dillingham Southwest-facing camera. Image taken at 1454 ADT.



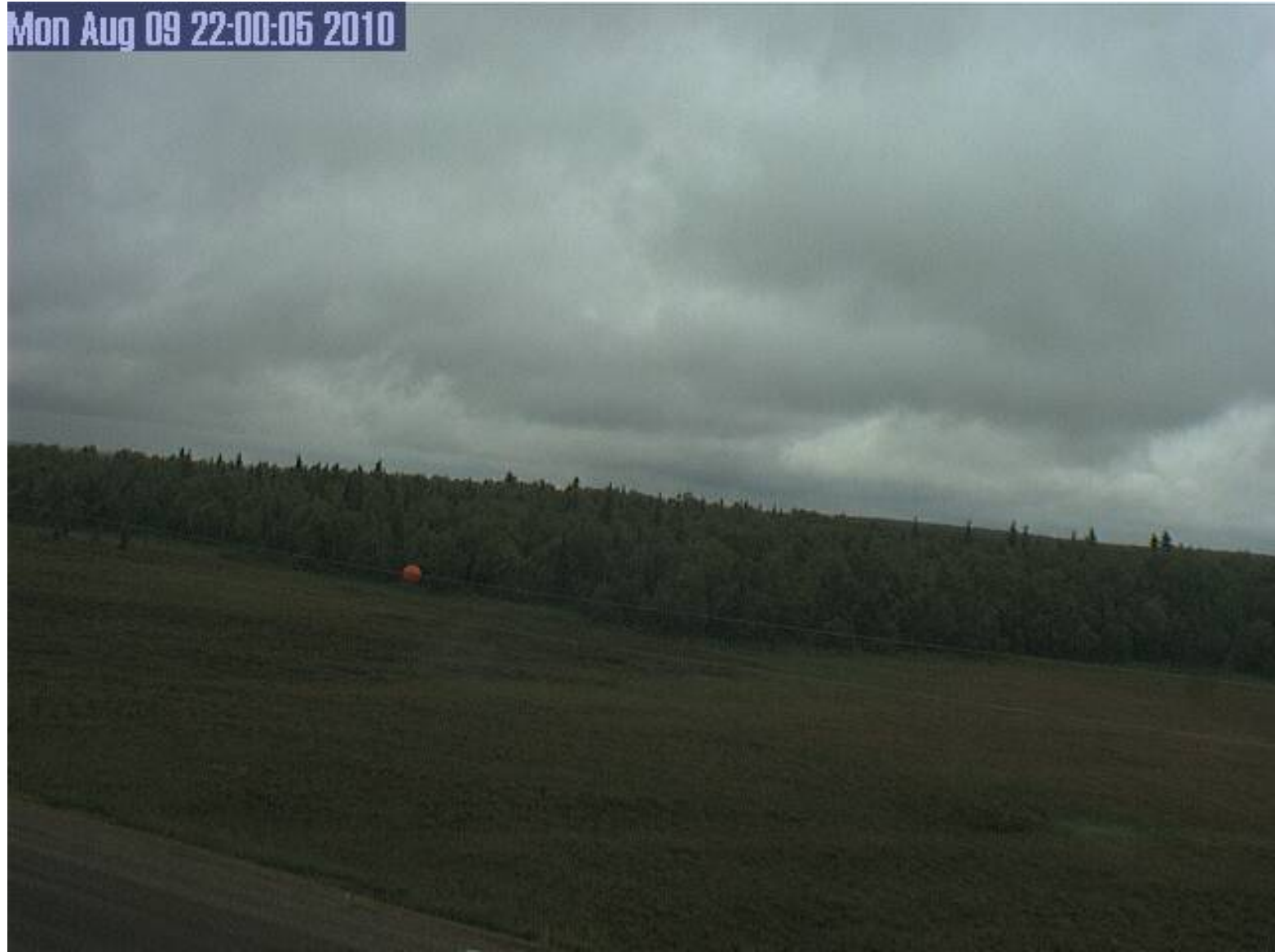
**Figure 33** – Dillingham Southwest-facing camera. Image taken at 1504 ADT.



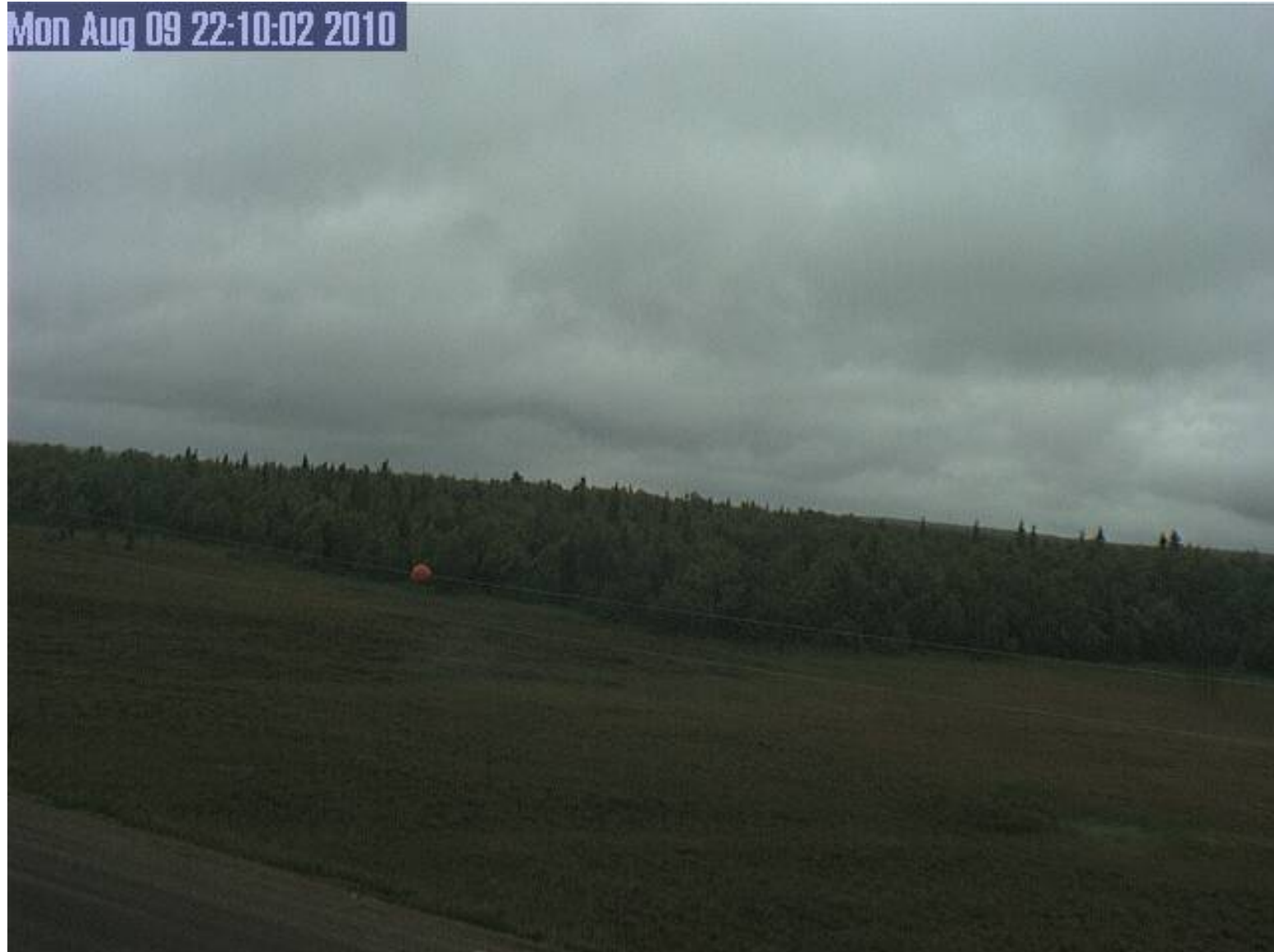
**Figure 34** – A clear day image from the New Stuyahok North-facing camera.



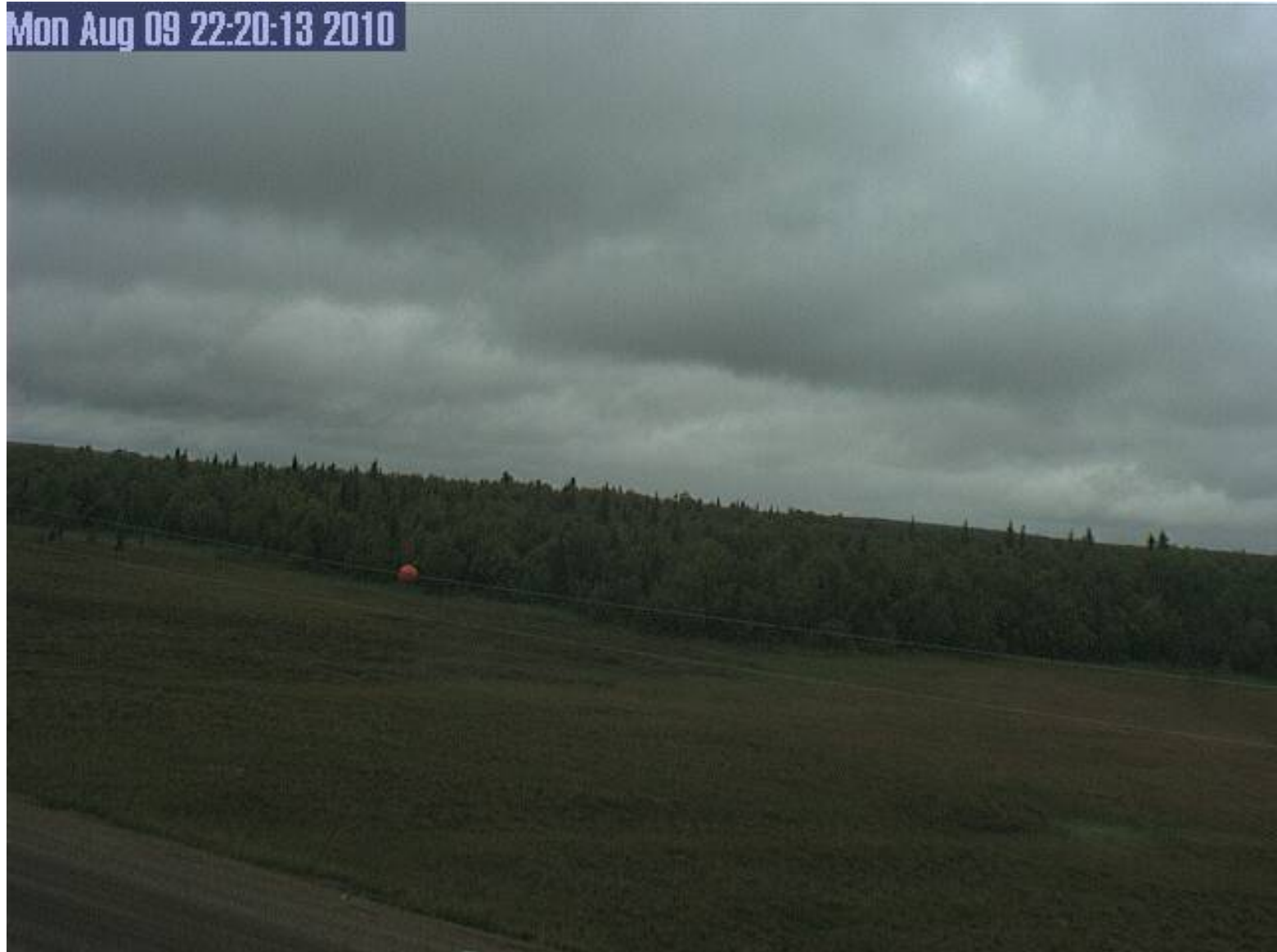
**Figure 35** – New Stuyahok North-facing camera. Image taken at 1350 ADT.



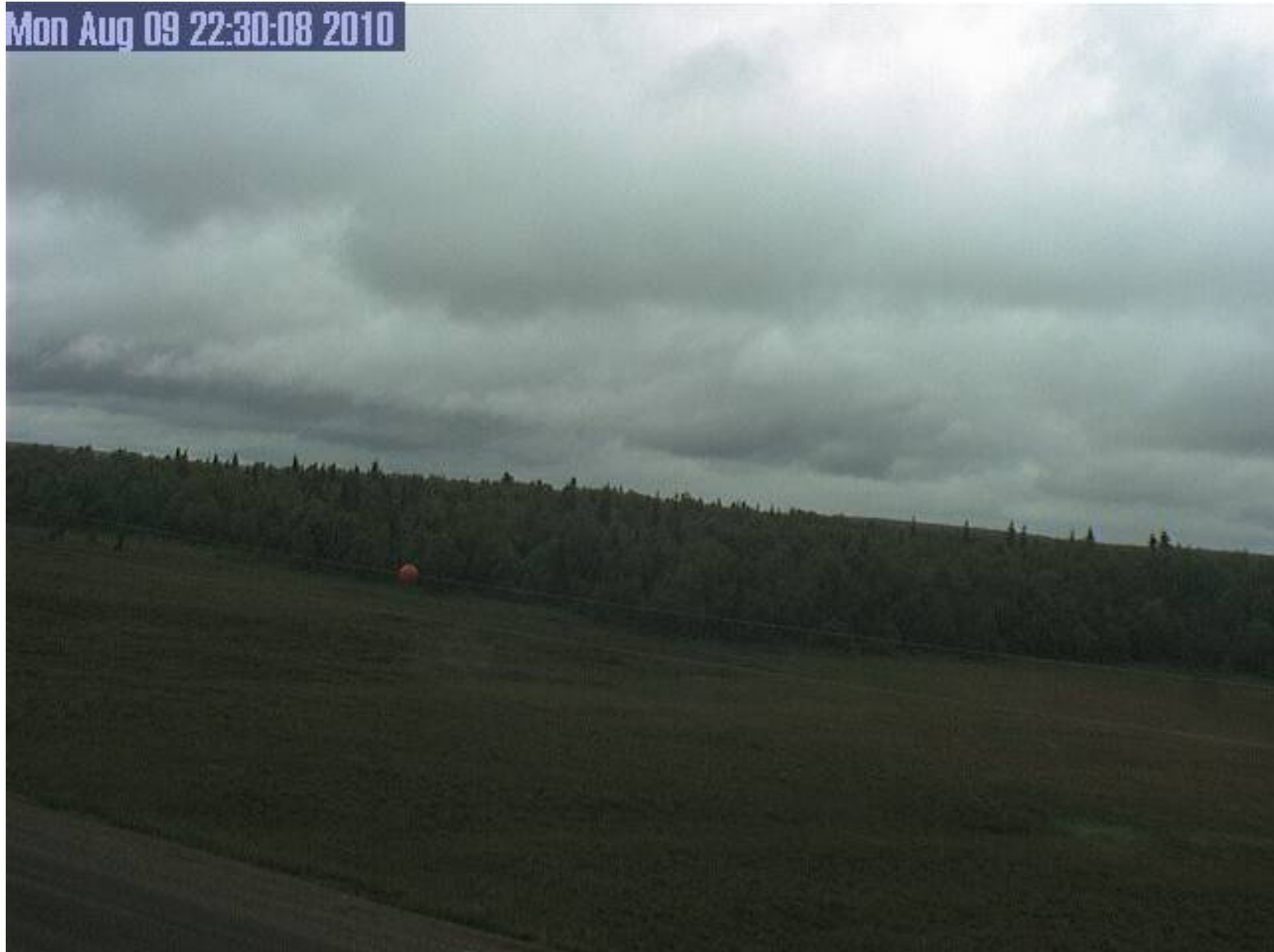
**Figure 36** – New Stuyahok North-facing camera. Image taken at 1400 ADT.



**Figure 37** – New Stuyahok North-facing camera. Image taken at 1410 ADT.



**Figure 38** – New Stuyahok North-facing camera. Image taken at 1420 ADT.

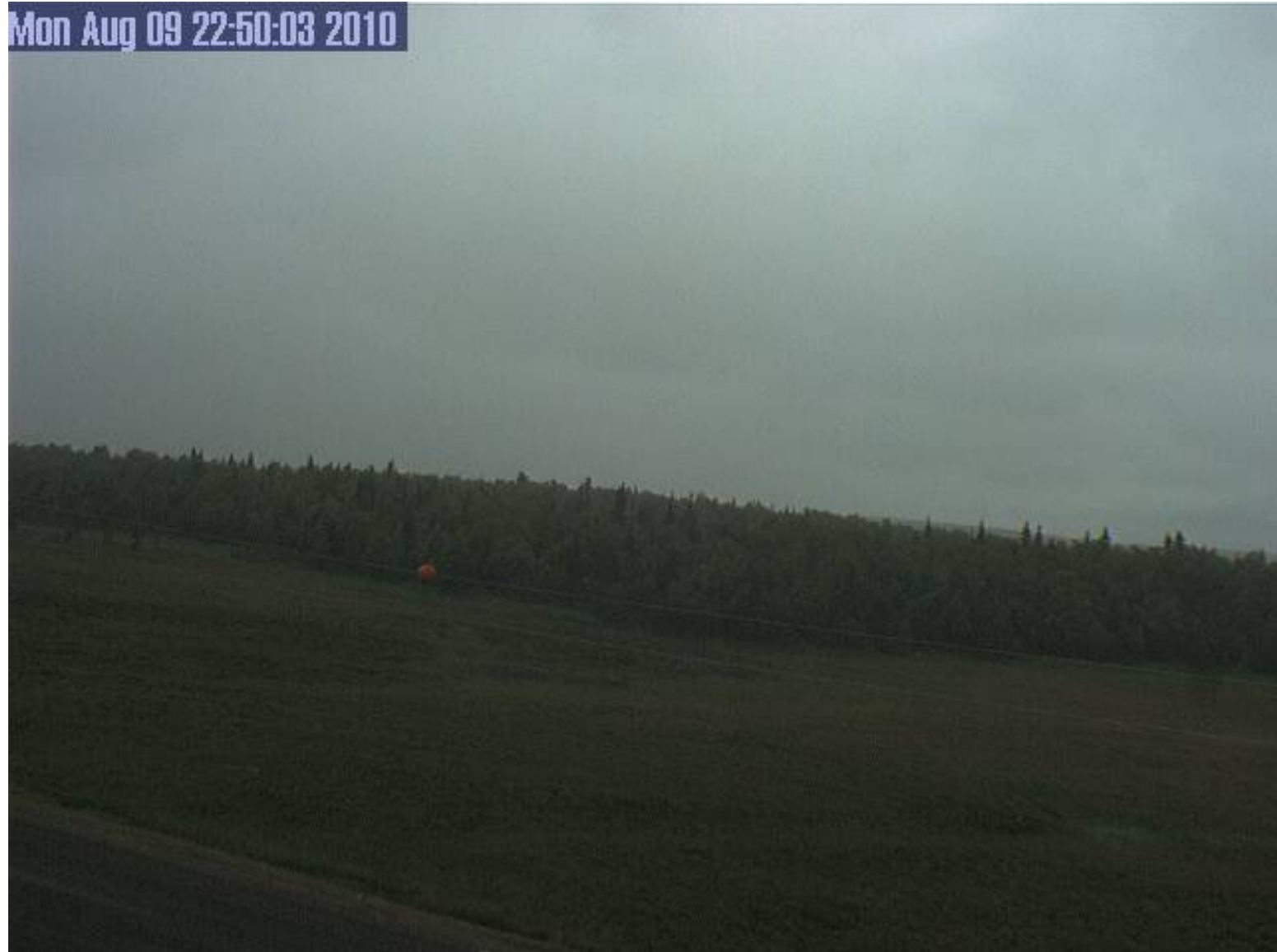


**Figure 39** – New Stuyahok North-facing camera. Image taken at 1430 ADT.

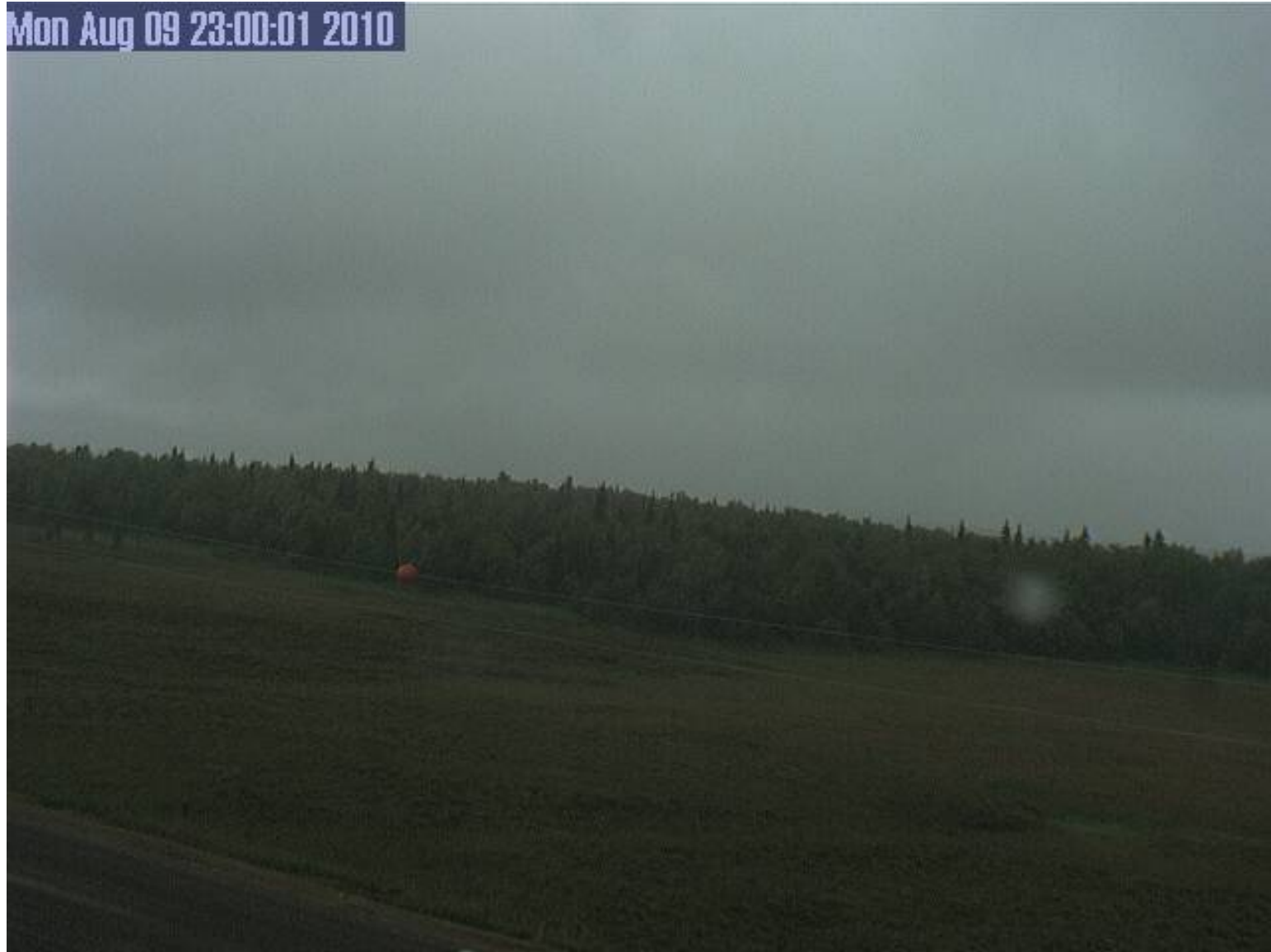




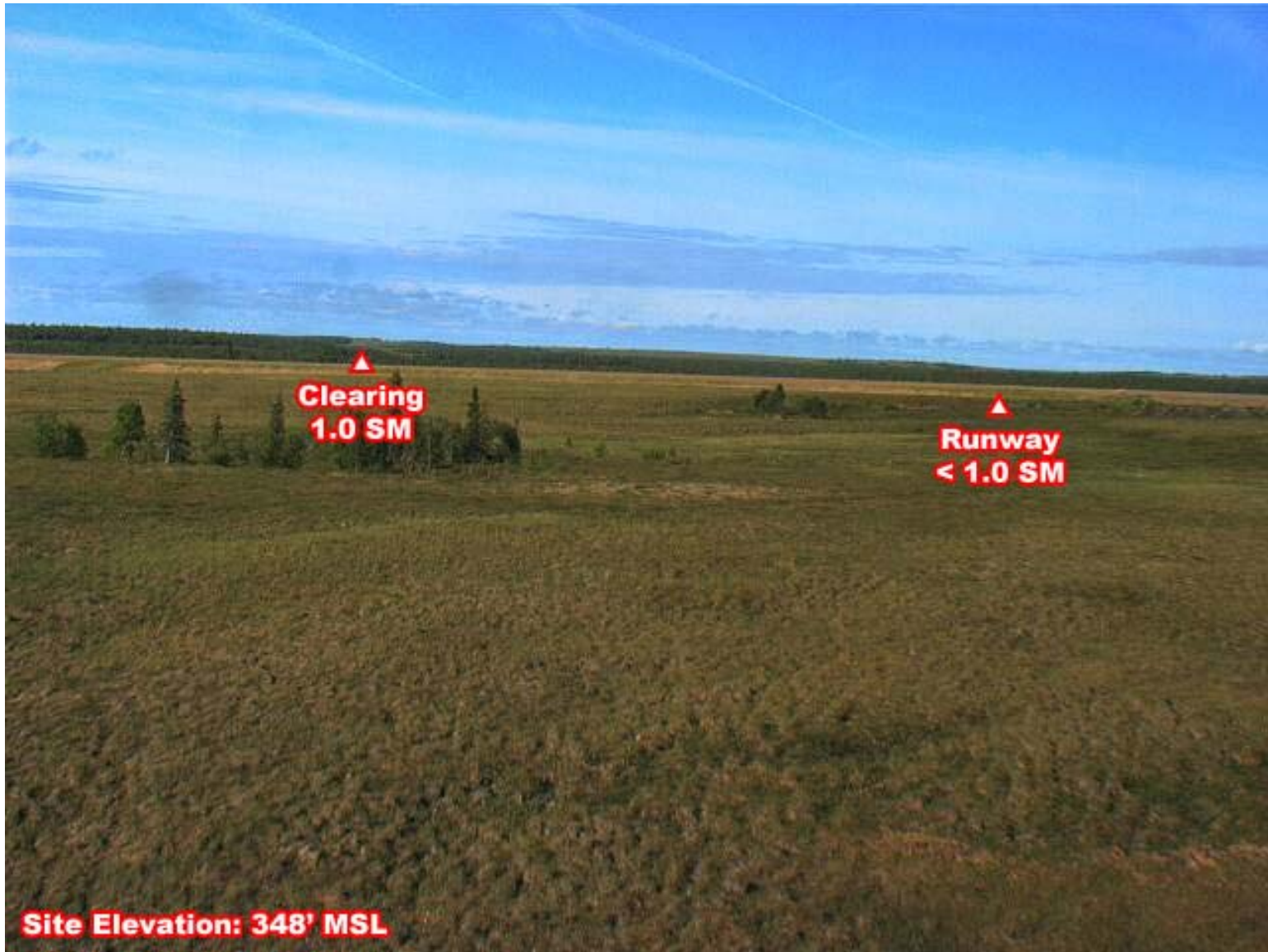
**Figure 40** – New Stuyahok North-facing camera. Image taken at 1440 ADT.



**Figure 41** – New Stuyahok North-facing camera. Image taken at 1450 ADT.



**Figure 42** – New Stuyahok North-facing camera. Image taken at 1500 ADT.



**Figure 43** – A clear day image from the New Stuyahok Southwest-facing camera.



**Figure 44** – New Stuyahok Southwest-facing camera. Image taken at 1356 ADT.



**Figure 45** – New Stuyahok Southwest-facing camera. Image taken at 1406 ADT.



**Figure 46** – New Stuyahok Southwest-facing camera. Image taken at 1415 ADT.



**Figure 47** – New Stuyahok Southwest-facing camera. Image taken at 1426 ADT.





**Figure 48** – New Stuyahok Southwest-facing camera. Image taken at 1436 ADT.



**Figure 49** – New Stuyahok Southwest-facing camera. Image taken at 1446 ADT.



**Figure 50** – New Stuyahok Southwest-facing camera. Image taken at 1456 ADT.

Nushagak Cooperative  
www.nushtel.com

2010-09-14 AKDT 16:30:02



**Figure 51** – A near-clear day image from the Lake Aleknagik camera.

Nushagak Cooperative  
www.nushtel.com

2010-08-09 AKDT 14:25:01



**Figure 52** – Lake Aleknagik camera. Image taken at 1425 ADT.