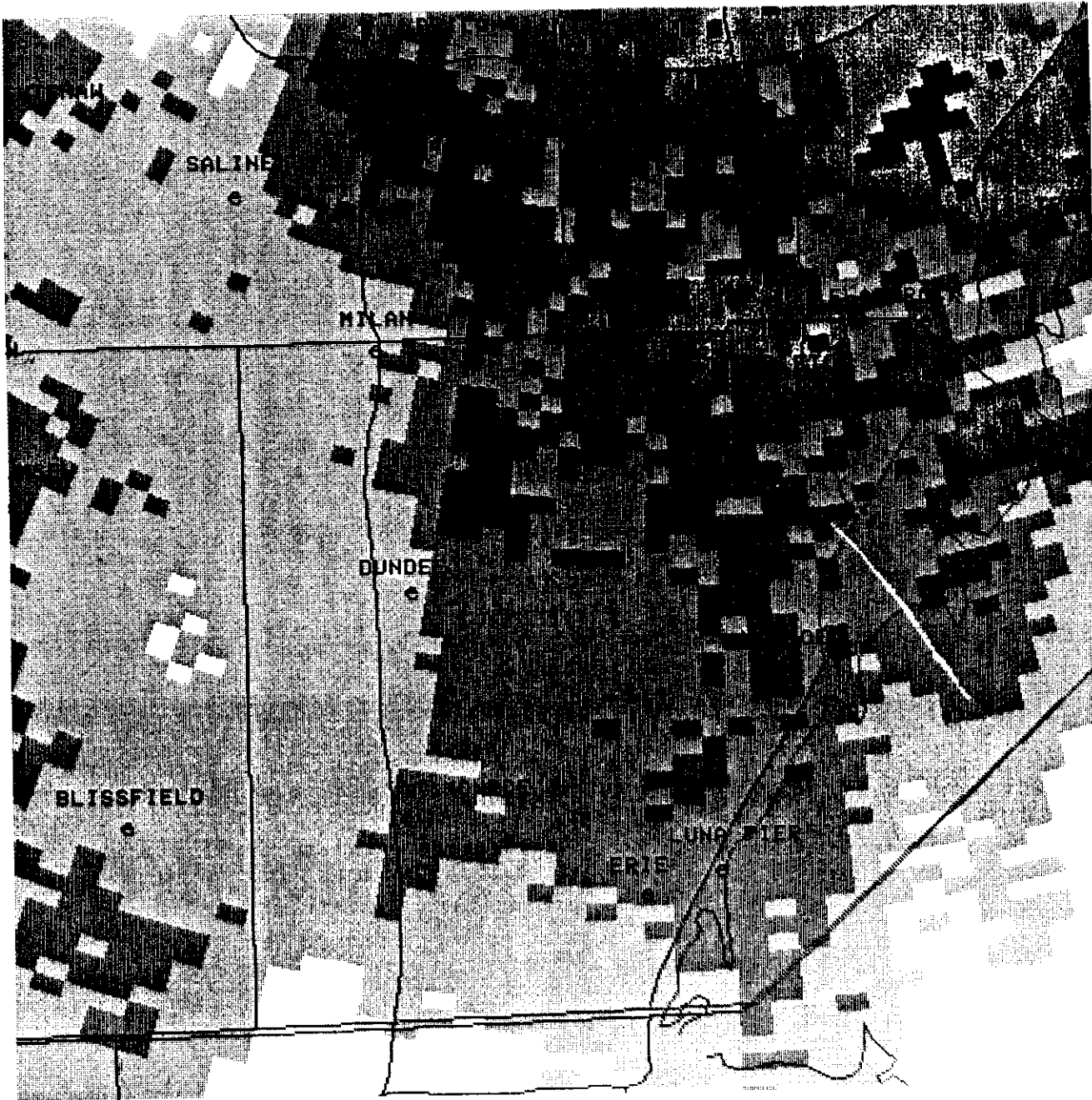


DCA97MA017

ATTACHMENTS_B
(1 - 15)



01/11/97 16:09
 BASE REF 19 R
 124 NM .54 NM RES
 01/09/97 20:43
 RDA:KDTX 42/41/59N
 1185 FT 83/28/19W
 ELEV= 0.5 DEG
 MODE A / 21
 CNTR 185DEG 46NM
 MAX= 43 DBZ

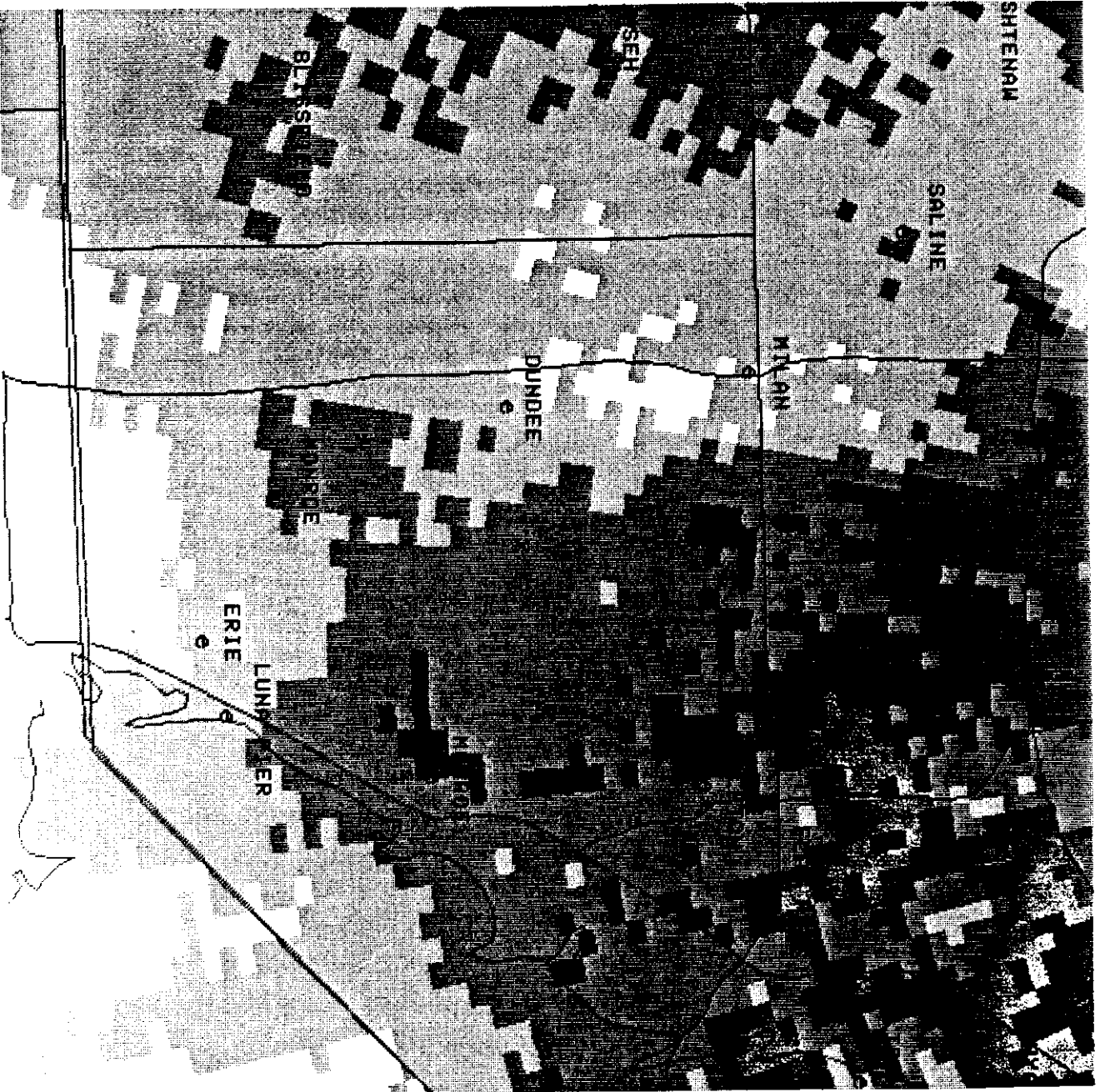


ND	DBZ
5	
10	
15	
20	
25	
30	
35	
40	
45	
50	
55	
60	
65	
70	
75	

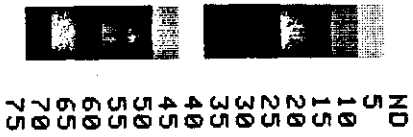
MAG=8X FL= 1 COM=1
 EDIT ANNOTATIONS
 MODE

CUR. L/L

Q15 R 1559 R
 PROD RCVD: OHP RPS
 KDTX 1559
 11/1608 LINE 3
 REQUESTED DSCNCT
 HARDCOPY



01/11/97 16:12
 BASE REF 19 R
 124 NM .54 NM RES
 01/09/97 20:49
 RDA:KDTX 42/41/59N
 1185 FT 83/28/19W
 ELEU= 0.5 DEG
 MODE A / 21
 CNTR 185DEG 46NM
 MAX= 47 DBZ



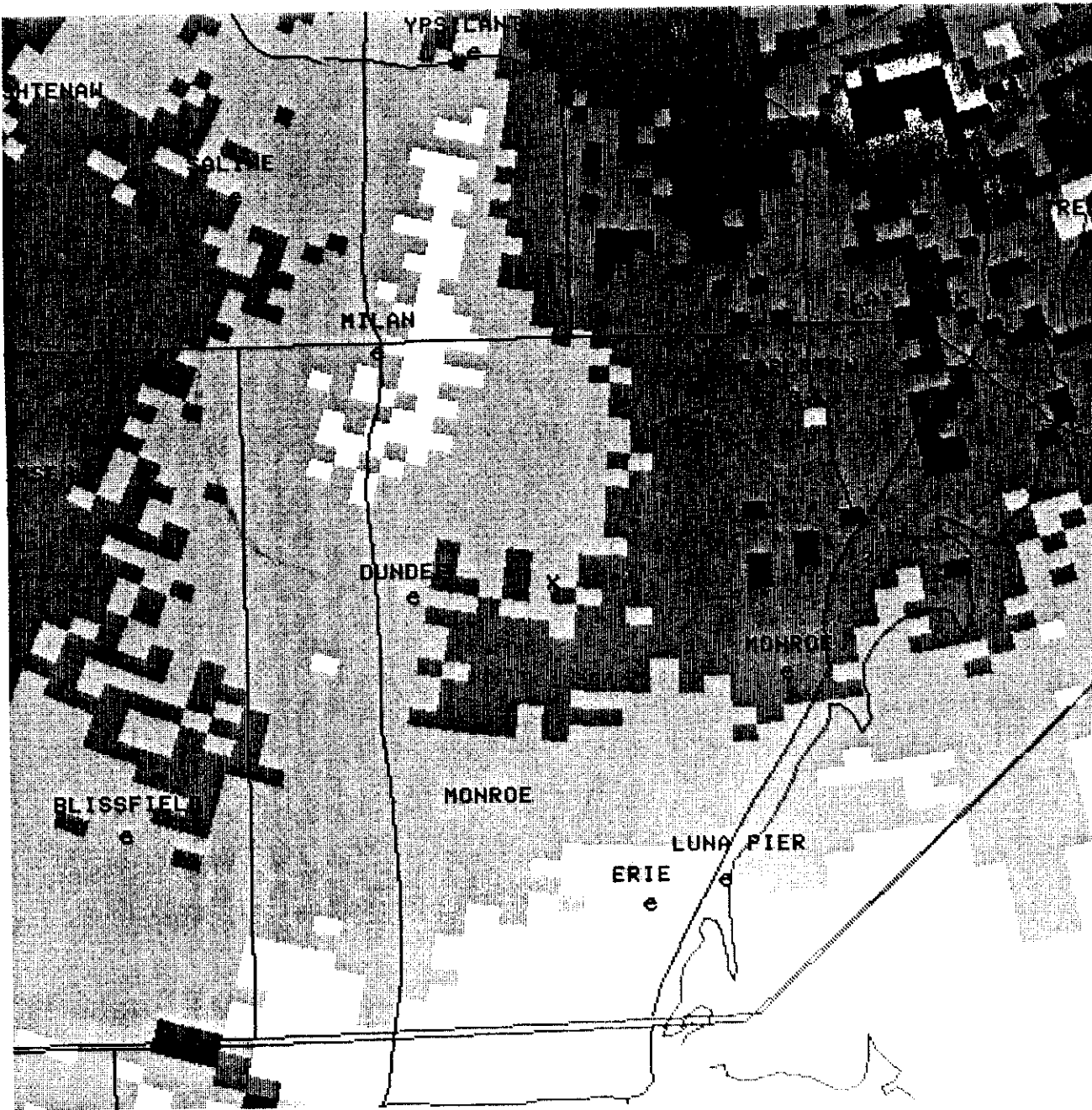
NO DBZ
 5
 10
 15
 20
 25
 30
 35
 40
 45
 50
 55
 60
 65
 70
 75

MAG=8X FL= 1 COM=1
 EDIT ANNOTATIONS
 MODE
 OVL U/A:AN

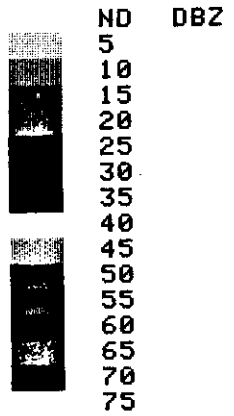
CUR. L/L

Q15 U 1559 R
 PRD RCD: R RPS
 KDTX 1609 1.1 0.5
 11/1610 DELTA SYS
 CAL = 1.00 DBZ
 HARDCOPY

3

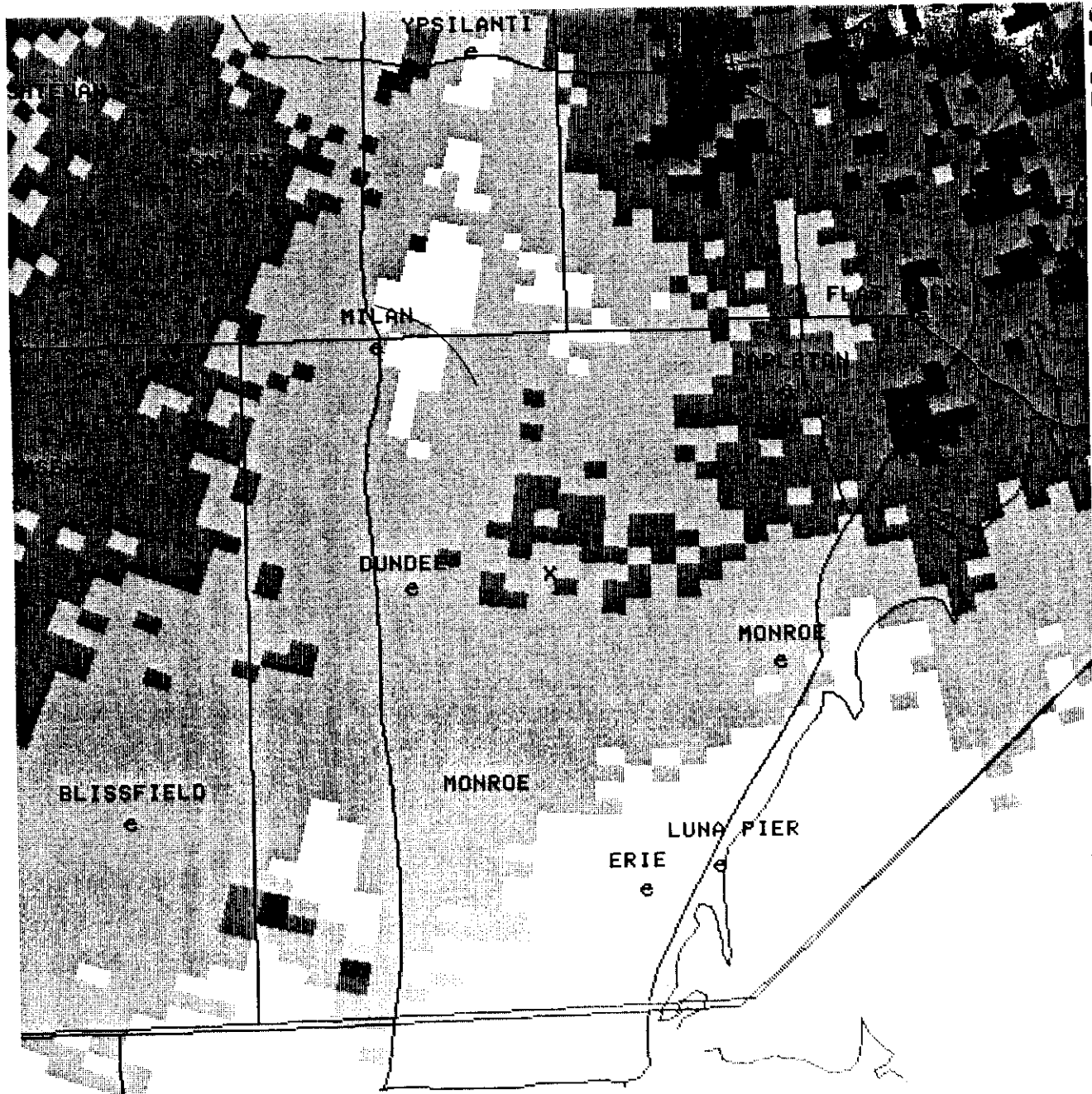


01/11/97 16:15
 BASE REF 19 R
 124 NM 54 NM RES
 01/09/97 20:55
 RDA:KDTX 42/41/59N
 1185 FT 83/28/19W
 ELEV= 0.5 DEG
 MODE A / 21
 CNTR 185DEG 46NM
 MAX= 44 DBZ



MAG=8X FL= 1 COM=1
 OUL:AN

CUR. L/L
 015 STI 1559 R
 PROD RCVD: SRM RPS
 KDTX 1609 1.5
 11/1610 DELTA SYS
 CAL = 1.00 DBZ
 HARDCOPY
 EDIT SAVED



01/11/97 16:20
 BASE REF 19 R
 124 NM .54 NM RES
 01/09/97 21:00
 RDA:KOTX 42/41/59N
 1185 FT 83/28/19W
 ELEV= 0.5 DEG
 MODE A / 21
 CNTR 185DEG 46NM
 MAX= 41 DBZ



ND	DBZ
5	
10	
15	
20	
25	
30	
35	
40	
45	
50	
55	
60	
65	
70	
75	

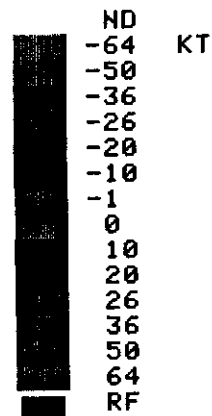
MAG=8X FL= 1 COM=1
 OUL:AN

Q15 SRM 1609 R
 PROD RCUD: CR RPS
 KOTX 1609 2.2
 11/1620 DELTA SYS
 CAL = 1.25 DBZ
 HARDCOPY

HARDCOPY BUSY

5

01/11/97 16:11
BASE VEL 27 U
124 NM .54 NM RES
01/09/97 20:43
RDA:KDTX 42/41/59N
1185 FT 83/28/19W
ELEV= 0.5 DEG
MODE A / 21
CNTR 185DEG 46NM
MAX= -47 KT 41 KT



MAG=8X FL= 1 COM=1
OVL:AN

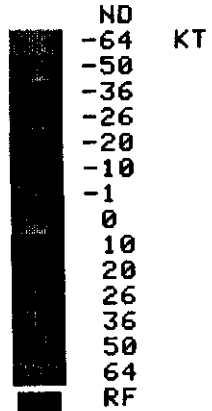
CUR. L/L

Q15 R 1555 KAPX
PROD RCVD: CR RPS
KDTX 1559 2.2
11/1610 DELTA SYS
CAL = 1.00 DBZ
HARDCOPY

EDIT SAVED

01/11/97 16:14
BASE VEL 27 U
124 NM .54 NM RES
01/09/97 20:49
RDA:KDTX 42/41/59N
1185 FT 83/28/19W
ELEV= 0.5 DEG
MODE A / 21
CNTR 185DEG 46NM
MAX= -47 KT 42 KT

6

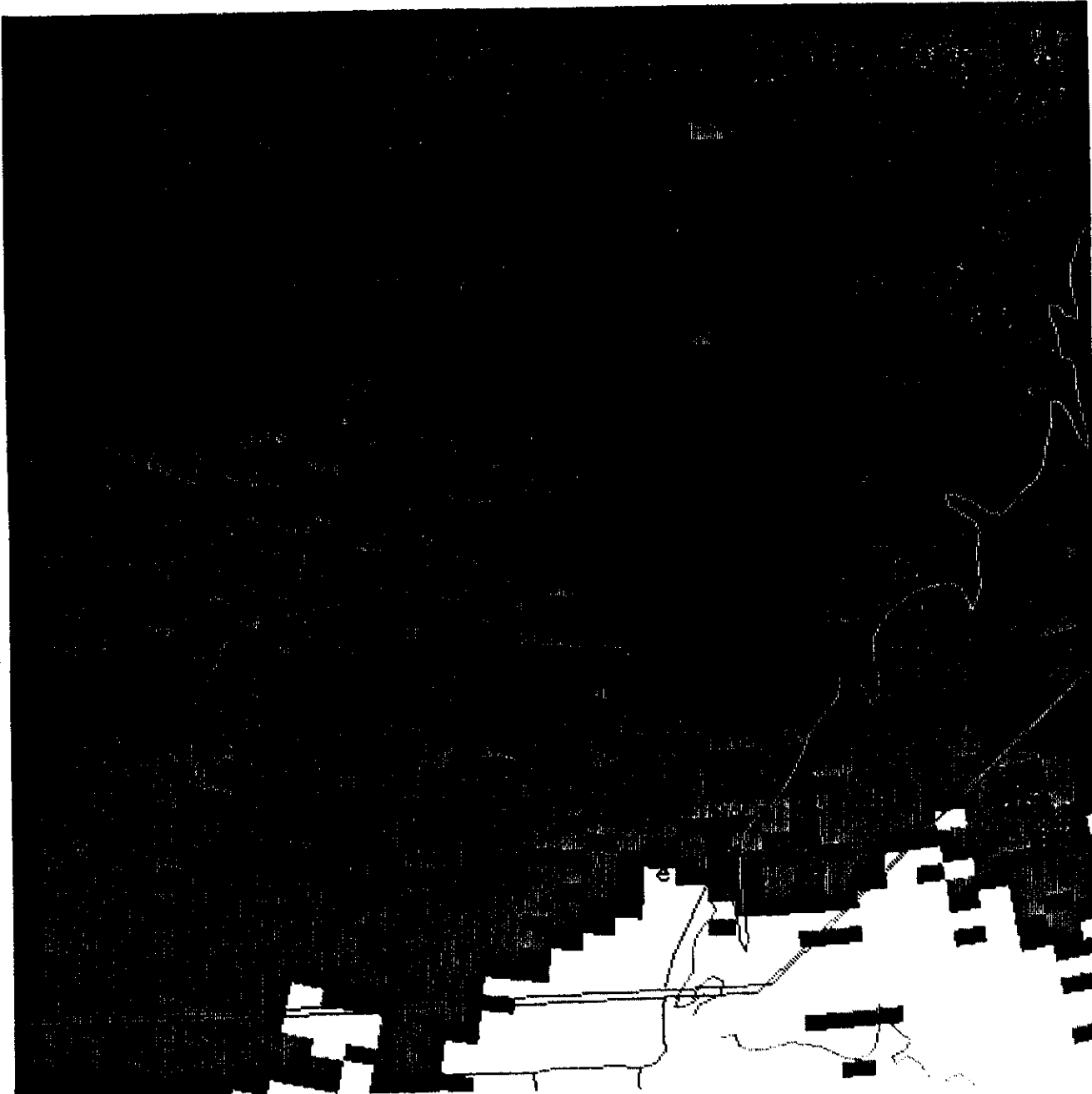


MAG=8X FL= 1 COM=1
OUL:AN

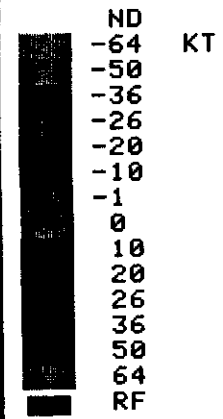
CUR. L/L

Q15 R 1559 R
PROD RCVD: SRM RPS
KDTX 1609 0.5
11/1610 DELTA SYS
CAL = 1.00 DBZ
HARDCOPY

HARDCOPY BUSY



01/11/97 16:18
 BASE VEL 27 U
 124 NM 54 NM RES
 01/09/97 20:55
 RDA:KDTX 42/41/59N
 1185 FT 83/28/19W
 ELEV= 0.5 DEG
 MODE A / 21
 CNTR 185DEG 46NM
 MAX= -46 KT 42 KT



MAG=8X FL= 1 COM=1
 OUL:AN

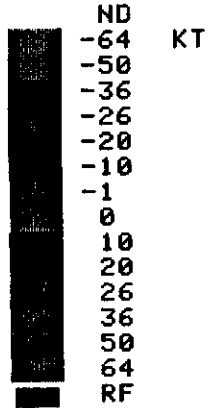
CUR. L/L 41/40/47N
 7235FT 83/19/40W
 Q15 R 1609 R
 PROD RCUD: SRM RPS
 KDTX 1609 2.5
 11/1610 DELTA SYS
 CAL = 1.00 DBZ
 HARDCOPY

EDIT SAVED

8



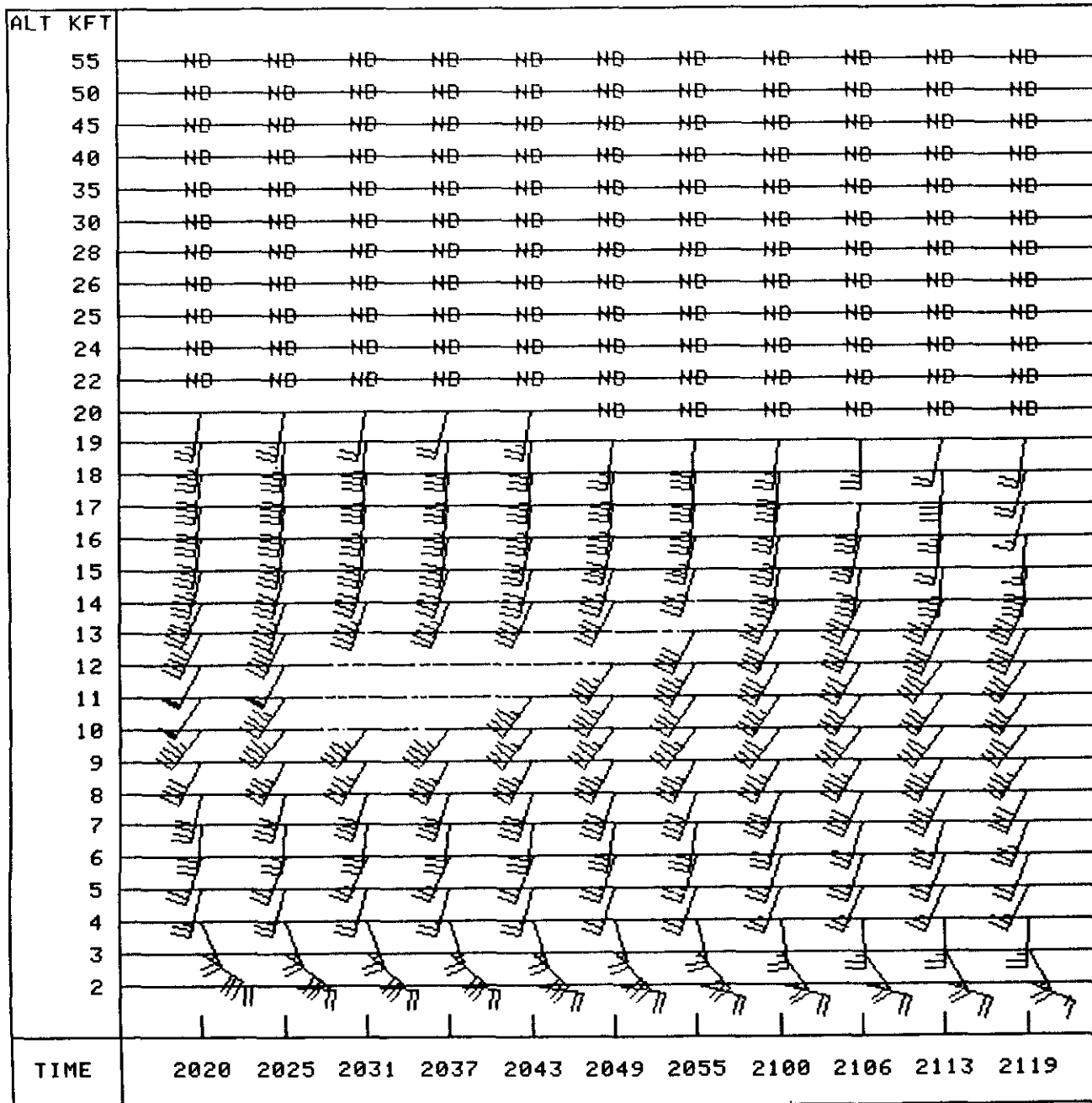
01/11/97 16:22
BASE VEL 27 U
124 NM .54 NM RES
01/09/97 21:00
RDA:KDTX 42/41/59N
1185 FT 83/28/19W
ELEV= 0.5 DEG
MODE A / 21
CNTR 185DEG 46NM
MAX= -46 KT 52 KT



MAG=8X FL= 1 COM=1
OVL:AN

CUR. L/L
Q15 SRM 1609 R
PROD RCUD: R RPS
KDTX 1619 1.1 0.5
11/1620 DELTA SYS
CAL = 1.25 DBZ
HARDCOPY
EDIT SAVED

(9)

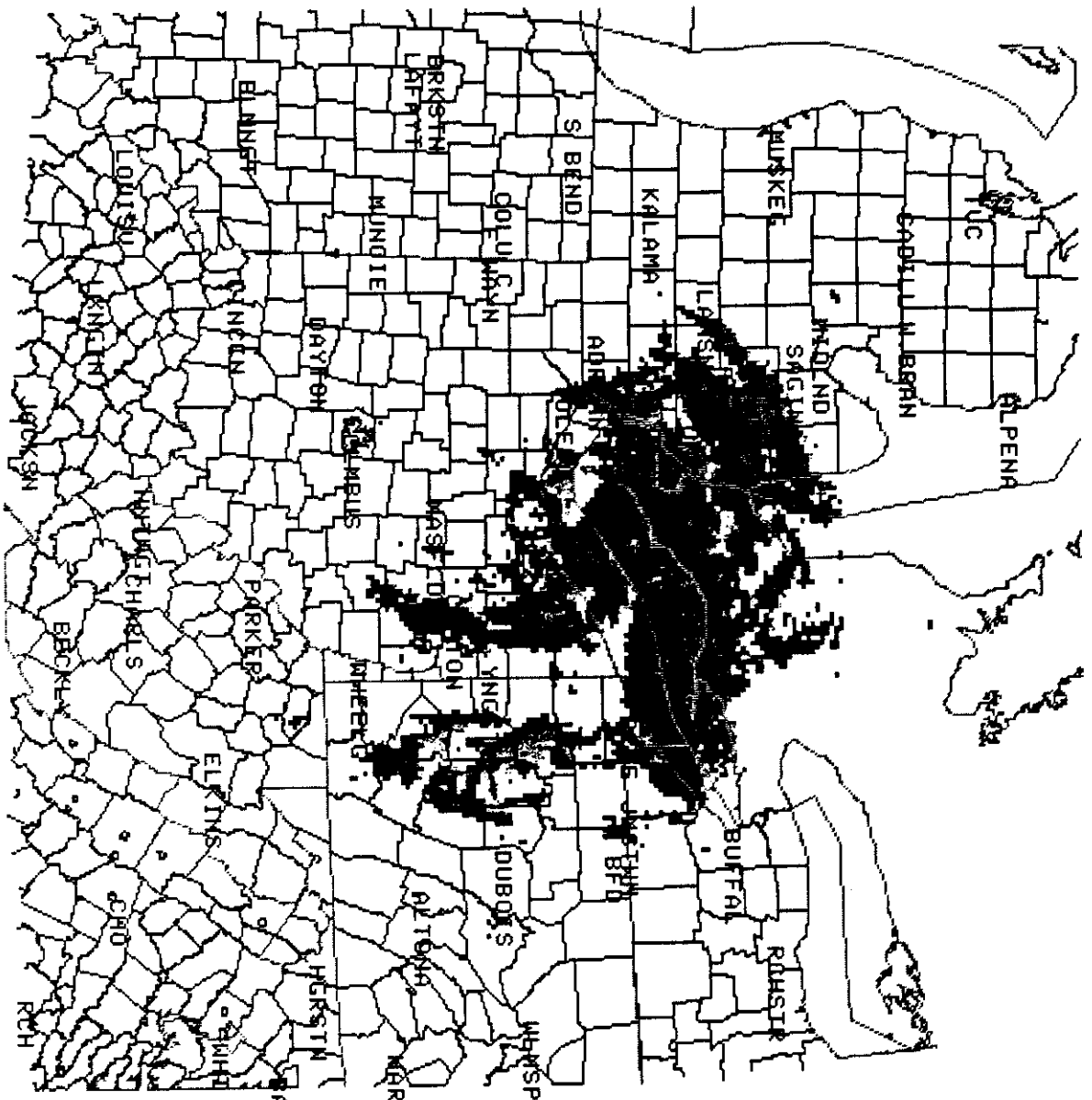


01/11/97 16:05
UAD WIND PROFILE
48 UWP
01/09/97 21:19
RDA:KOTX 42/41/59N
1185 FT 83/28/19W
MODE A / 21
MAX=213 DEG 43 KT
ALT: 9000 FT



FL= 1 COM=1

CUR. L/L
Q15 U 1549 R
PROD RCVD: R RPS
KOTX 1559 1.1 1.5
11/1601 ARCHIVE
UNIT 1 READ DONE
HARDCOPY



02/26/97 10:41
 CMP REF 38 CR
 248 NM 2.2 NM RES
 01/09/97 20:38
 RDA:KCLE 41/24/46M
 860 FT 81/51/36M

MODE A / 21
 CNTR 0DEC QNM
 MAX= 64 DBZ



ND DBZ
 5
 10
 15
 20
 25
 30
 35
 40
 45
 50
 55
 60
 65
 70
 75

MAG=1X FL= 1 COM=1

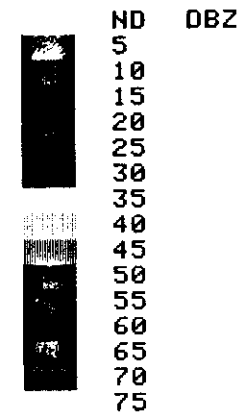
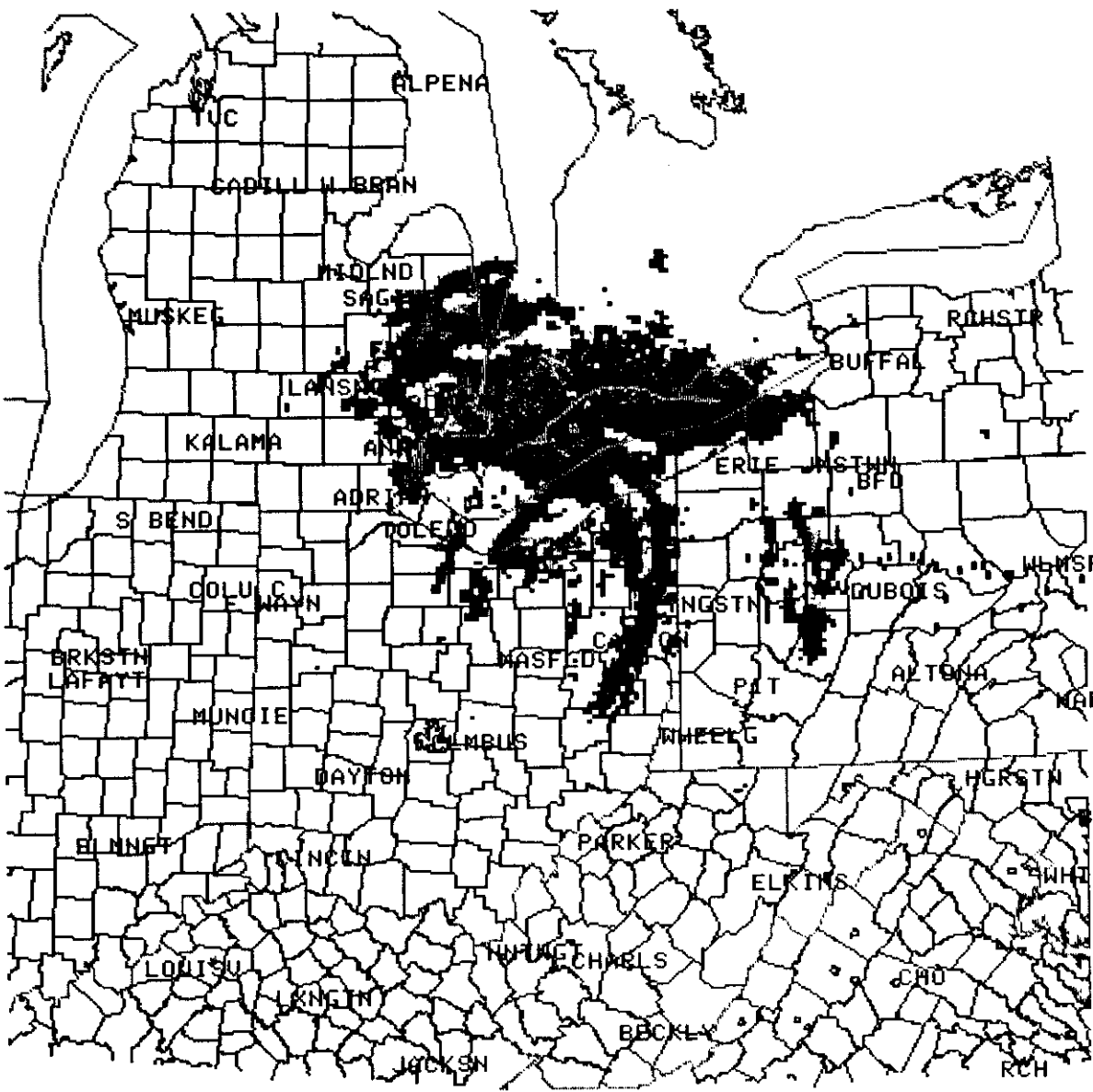
ALLI QUEUE EMPTY
 HS 26/0920 ARCHIVE
 UNIT 1 READ DONE
 HARDCOPY
 MAP SELECTED



11

02/26/97 10:42
CMP REF 38 CR
248 NM 2.2 NM RES
01/09/97 20:55
RDA:KCLE 41/24/46N
860 FT 81/51/36W

MODE A / 21
CNTR 0DEG 0NM
MAX= 62 DBZ



MAG=1X FL= 1 COM=1

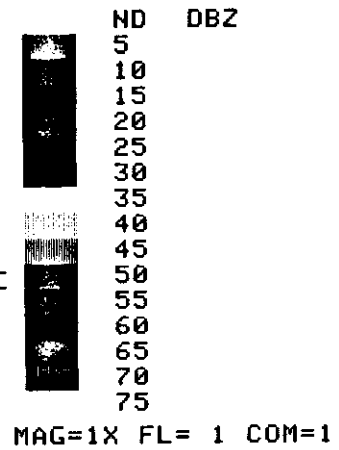
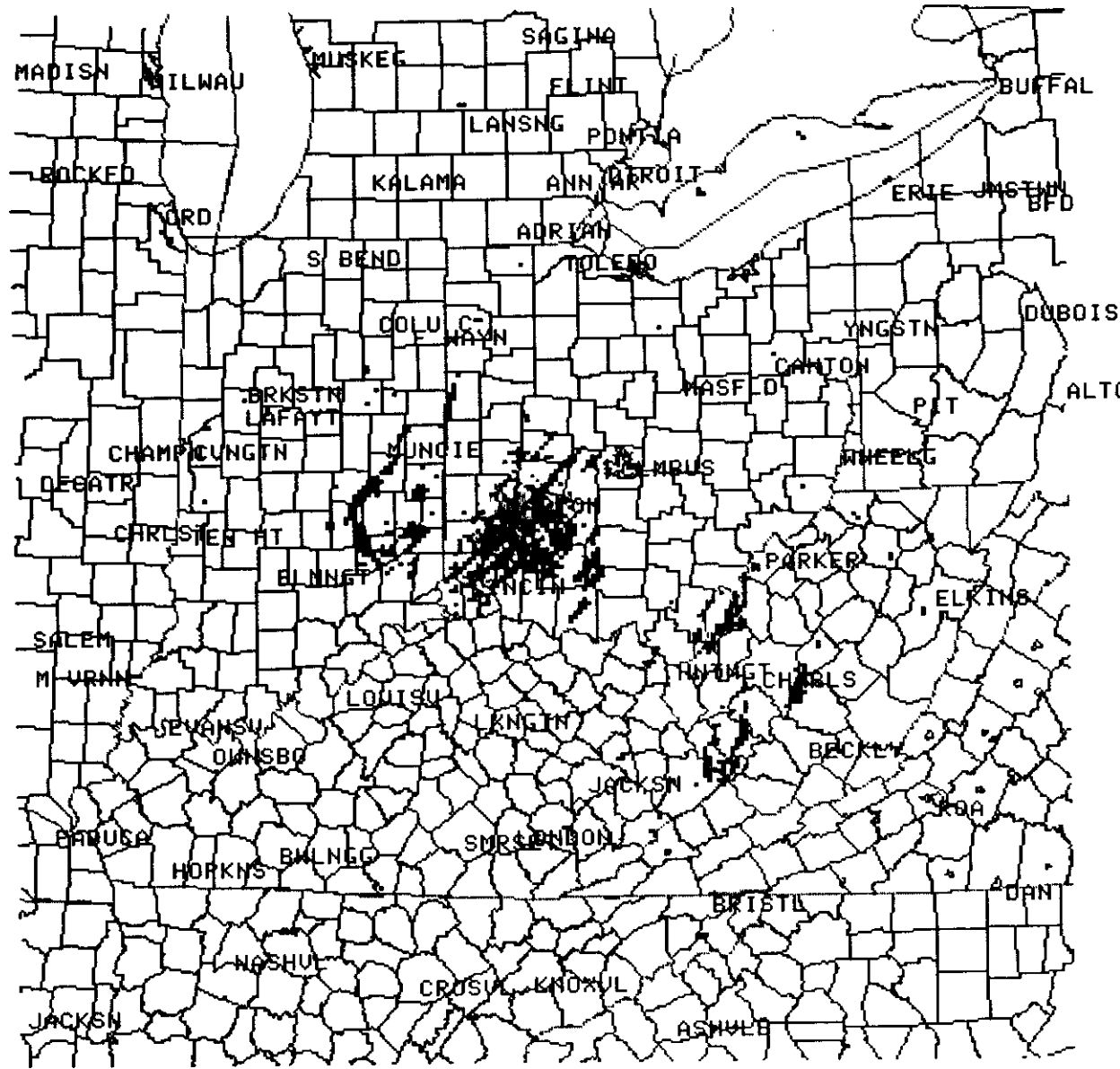
ALTI QUEUE EMPTY

HS 26/0920 ARCHIVE
UNIT 1 READ DONE
HARDCOPY

12

02/26/97 10:13
CMP REF 38 CR
248 NM 2.2 NM RES
01/09/97 20:30
RDA:KILN 39/25/11N
1170 FT 83/49/19W

MODE A / 21
CNTR 0DEG 0NM
MAX= 52 DBZ



QUEUE EMPTY

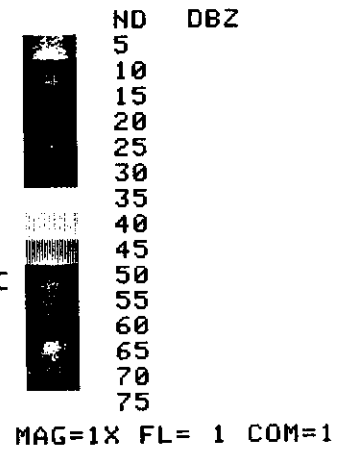
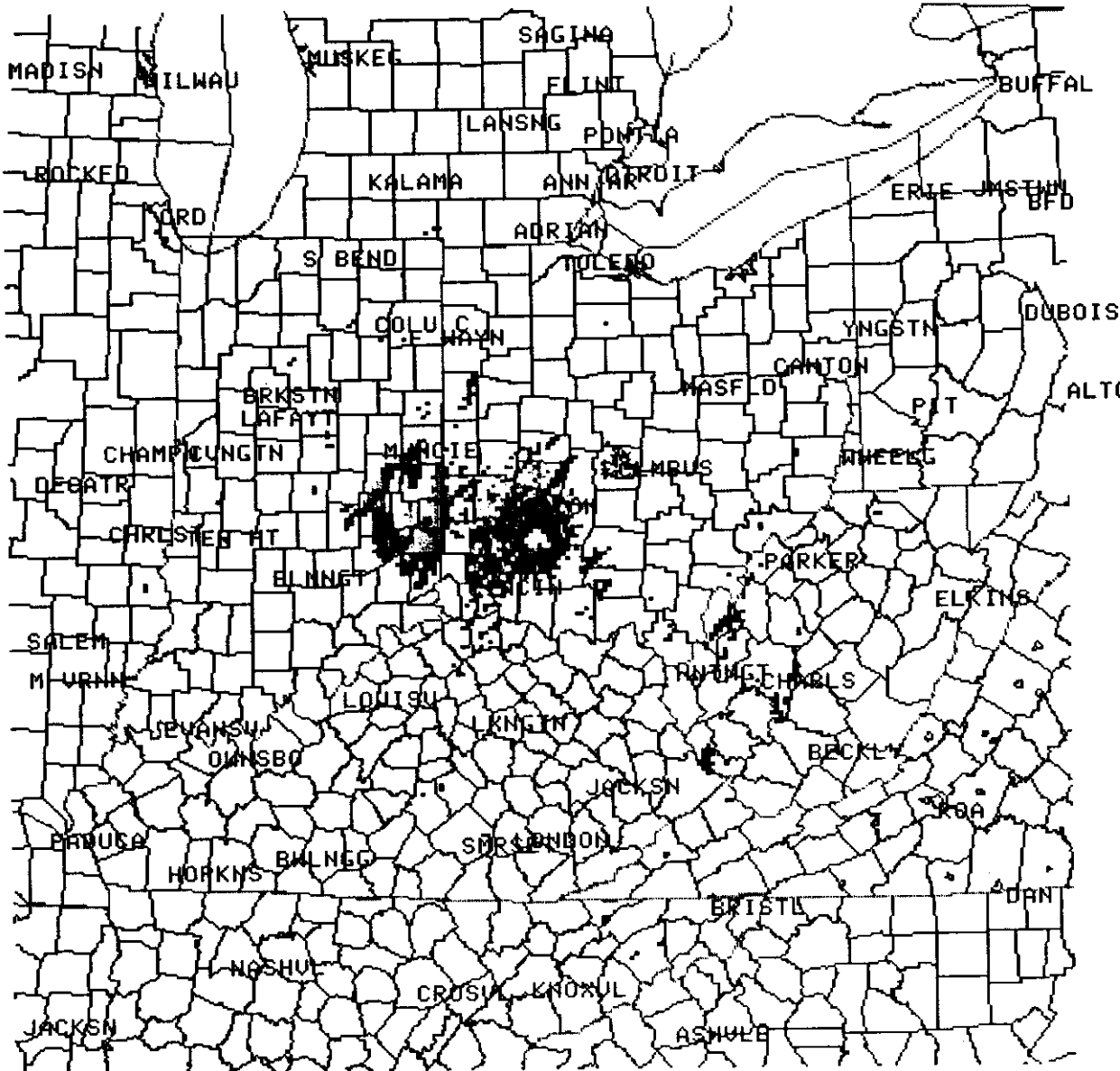
26/0920 ARCHIVE
UNIT 1 READ DONE
HARDCOPY

MAP DELETED

13

02/26/97 10:15
CMP REF 38 CR
248 NM 2.2 NM RES
01/09/97 20:47
ROA:KILN 39/25/11N
1170 FT 83/49/19W

MODE A / 21
CNTR 0DEG 0NM
MAX= 47 DBZ

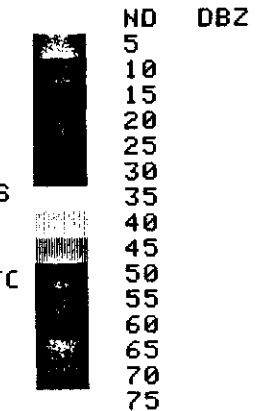
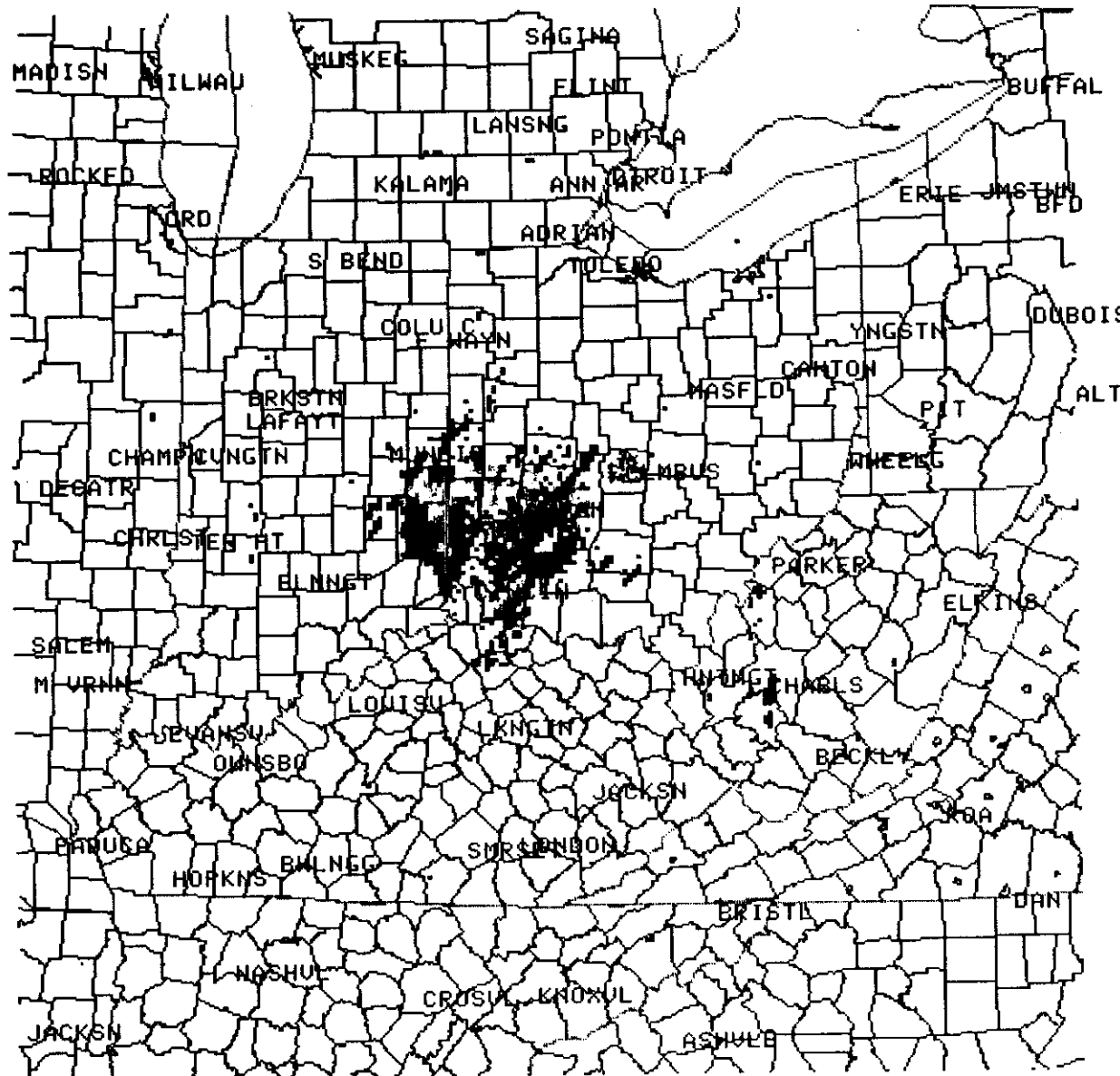


QUEUE EMPTY
26/0920 ARCHIVE
UNIT 1 READ DONE
HARDCOPY

171

02/26/97 10:19
CMP REF 38 CR
248 NM 2.2 NM RES
01/09/97 21:05
RDA:KILN 39/25/11N
1170 FT 83/49/19W

MODE A / 21
CNTR 0DEG 0NM
MAX= 49 DBZ



MAG=1X FL= 1 COM=1

QUEUE EMPTY

26/0920 ARCHIVE
UNIT 1 READ DONE
HARDCOPY

in all
 ven in
 terrain
 ational
 N_s exp
 ferred to
 surface
 dient and
 l to radar
 models is
 ge
 00 n mi
 feet
 1200
 2000
 2600
 3700
 14800
 mple volume
 ns, however,
 th height and
 may decrease
 ariations may
 dency. These
 duct," or prop-
 ard atmosphere

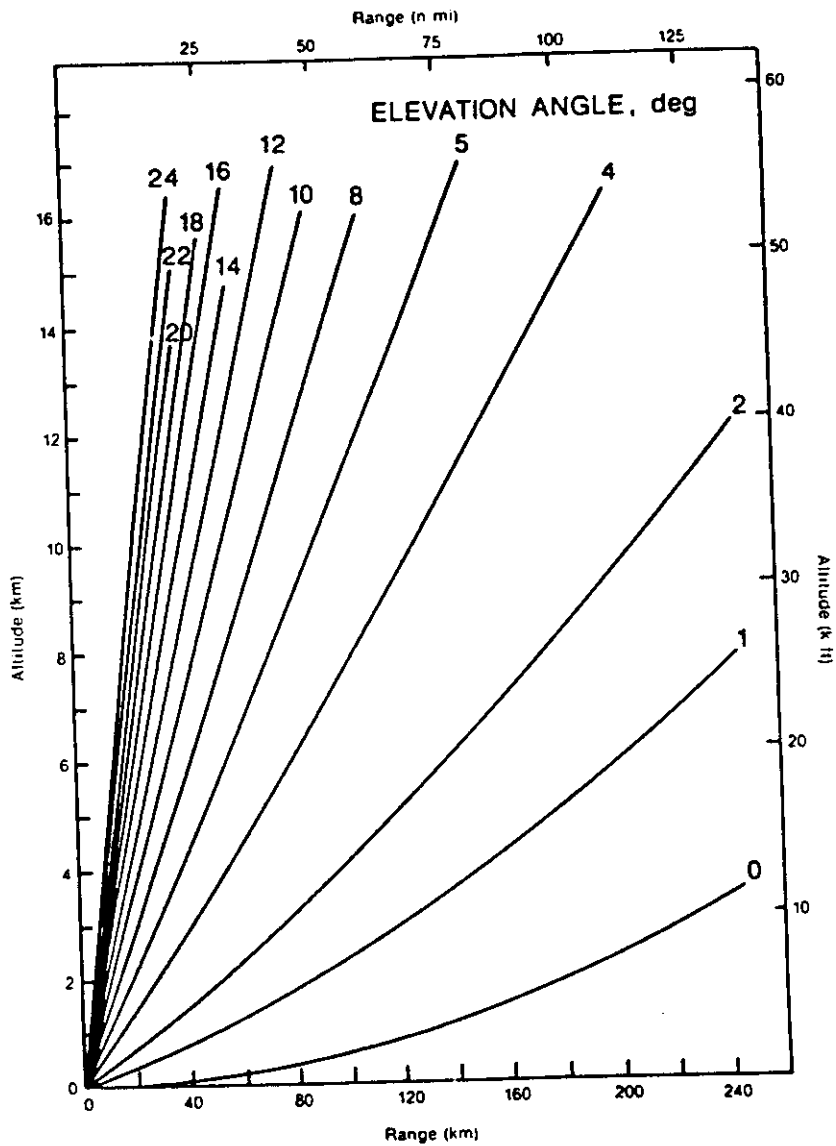


Figure 3-12
 Range-Radar Beam Altitude Nomogram
 (Standard Atmosphere)

15