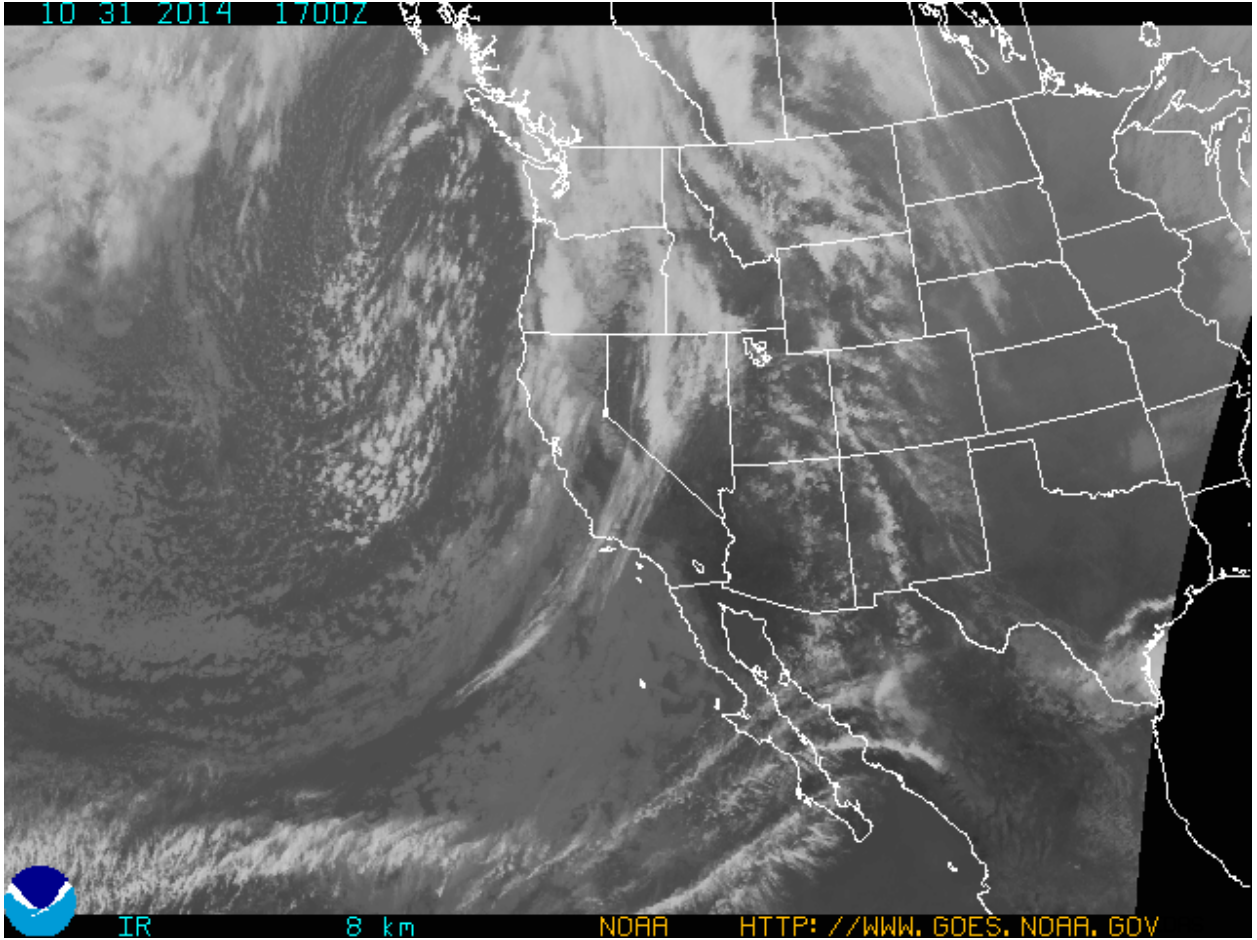


10 31 2014 1700Z



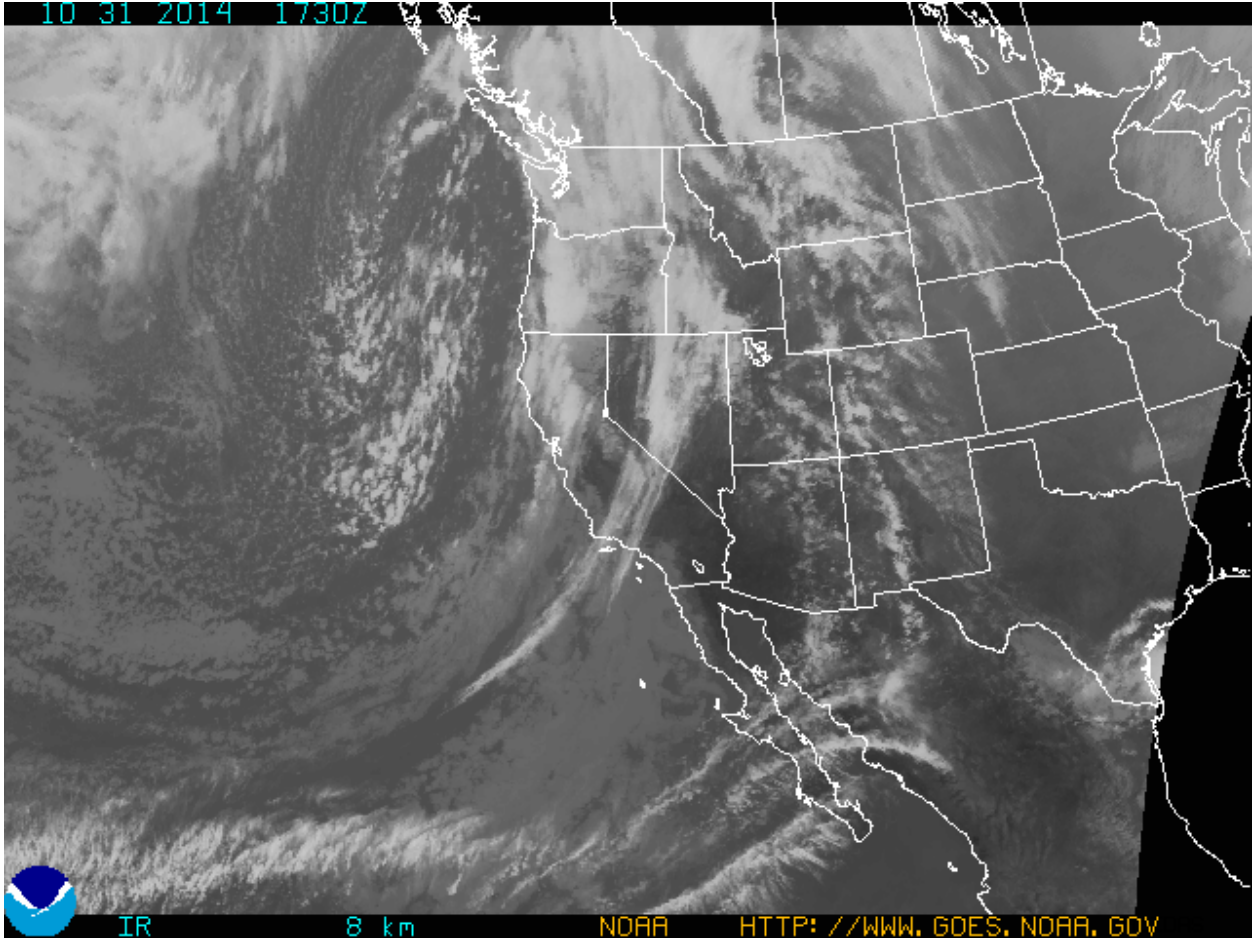
IR

8 km

NOAA

[HTTP://WWW.GOES.NOAA.GOV](http://www.goes.noaa.gov)

10 31 2014 1730Z



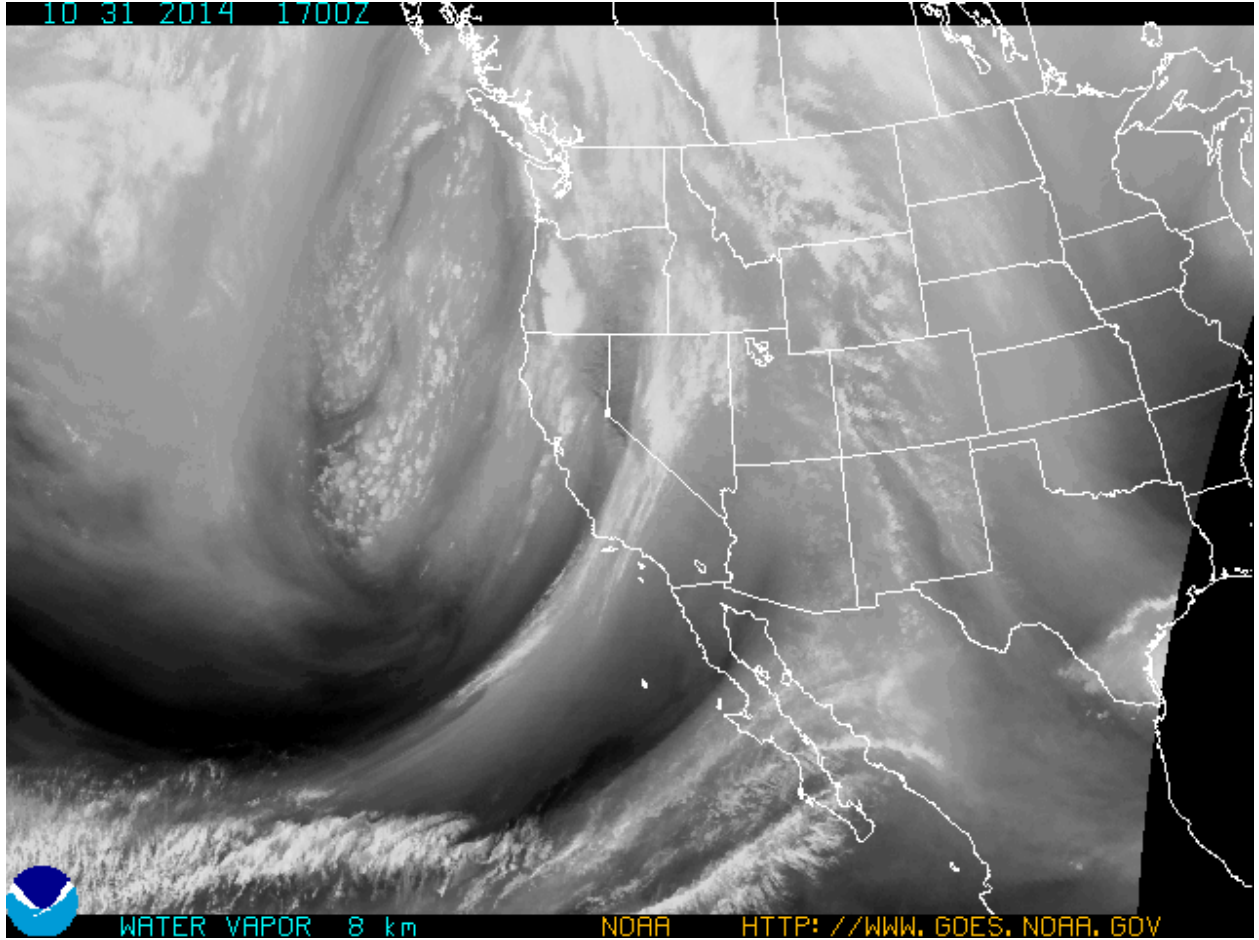
IR

8 km

NOAA

[HTTP://WWW.GOES.NOAA.GOV](http://www.goes.noaa.gov)

10 31 2014 1700Z

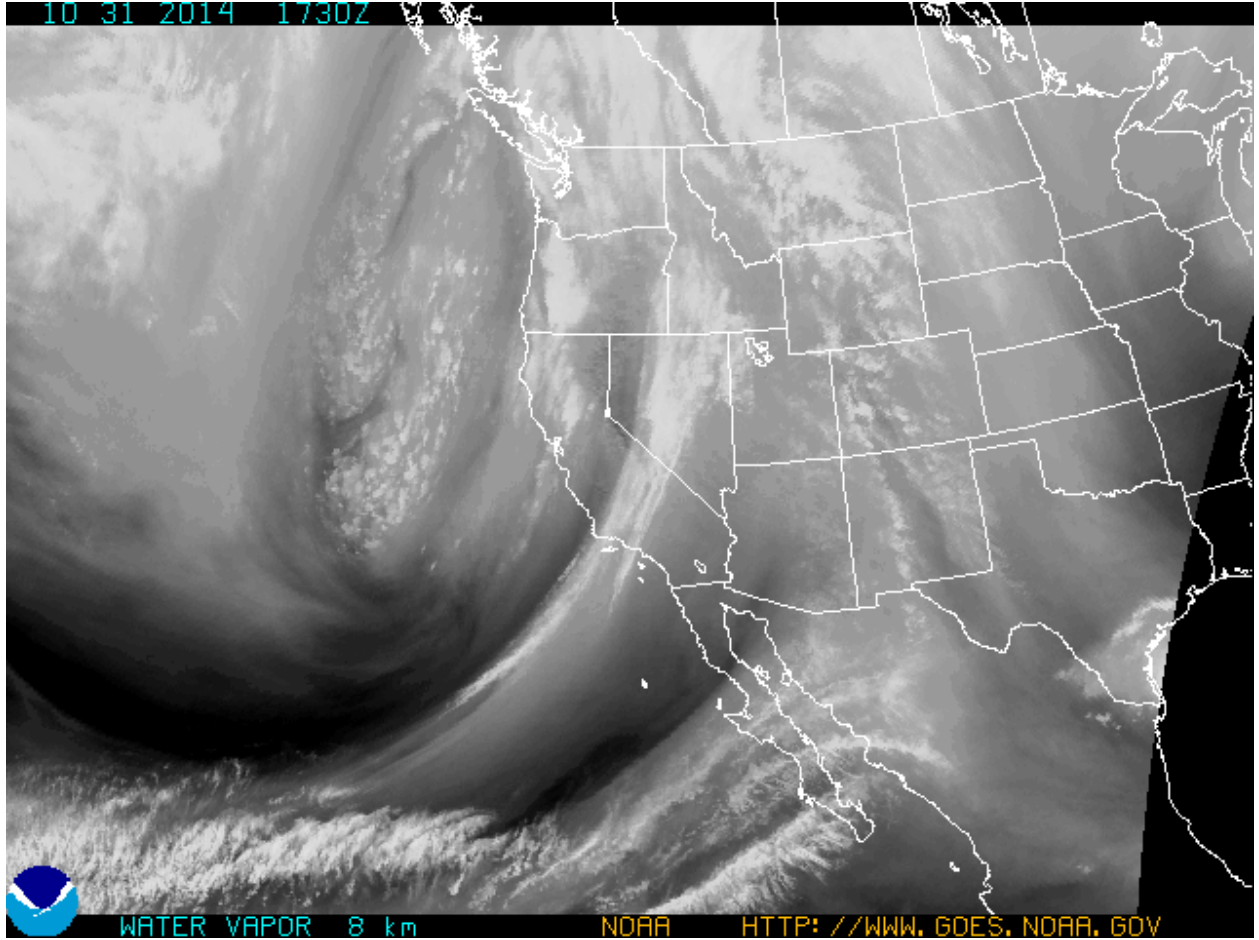


WATER VAPOR 8 km

NOAA

[HTTP://WWW.GOES.NOAA.GOV](http://www.goes.noaa.gov)

10 31 2014 1730Z

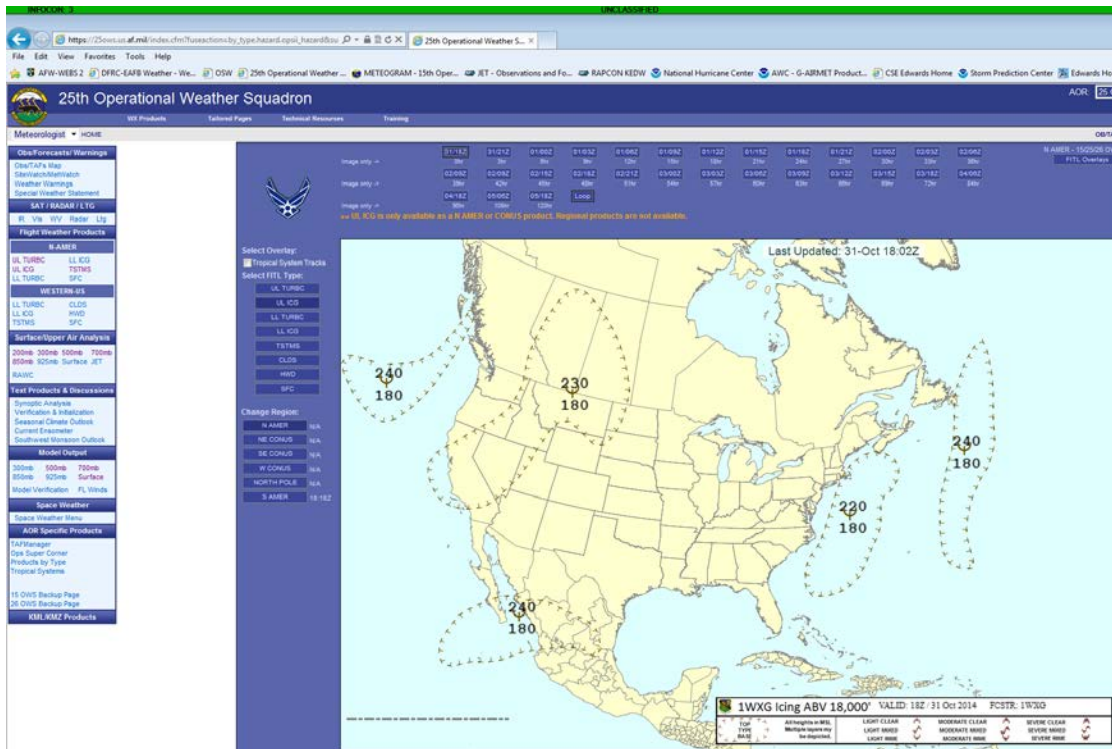
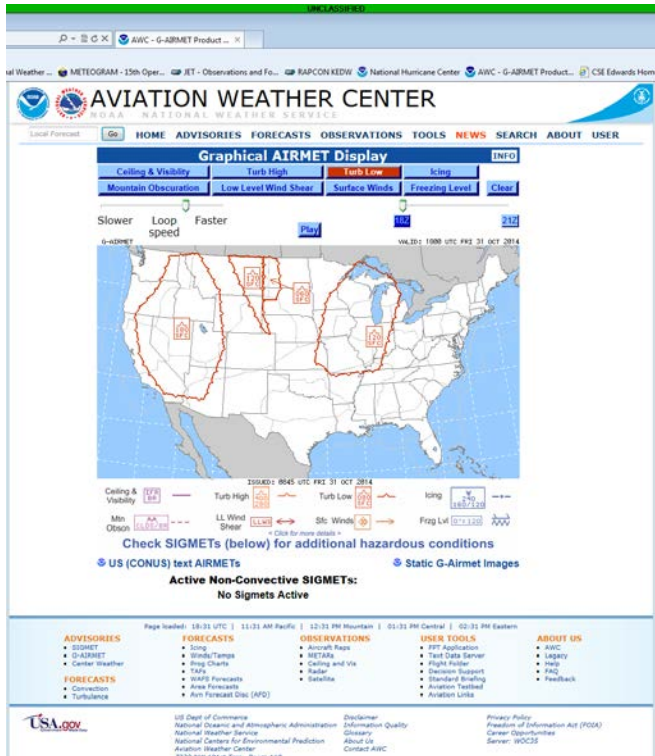


WATER VAPOR 8 km

NOAA

[HTTP://WWW.GOES.NOAA.GOV](http://www.goes.noaa.gov)

No Upper level turbulence on AWC.



Light rime forecasted at 31/18Z FL180-230.

ID: KEDW
Name: EDWARDS AFB CA
Unclassified

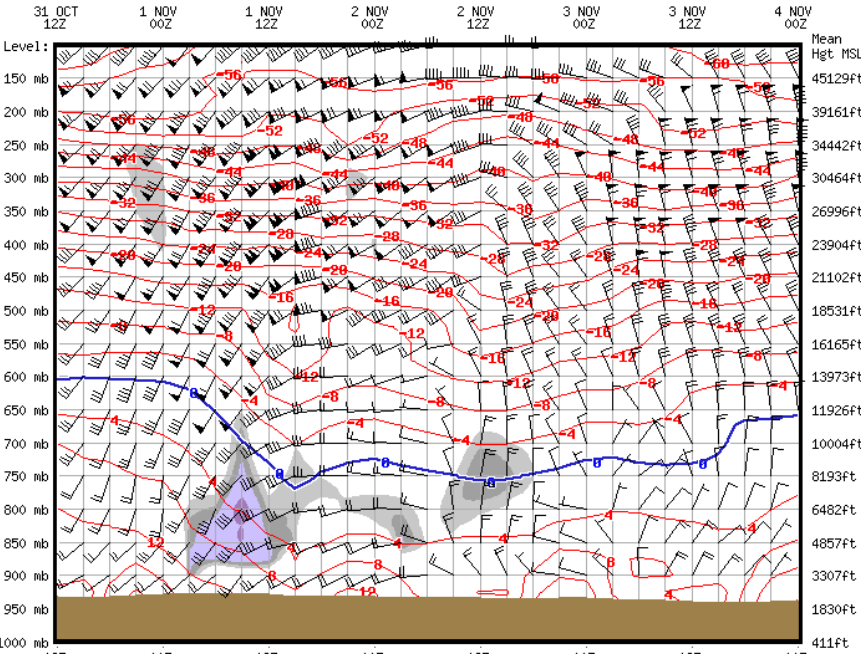
150WS Forecast Meteogram



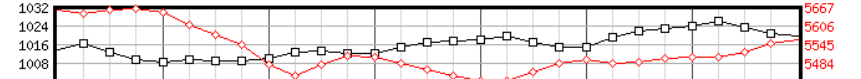
NAM-40KM

Model Run: 2014103112Z

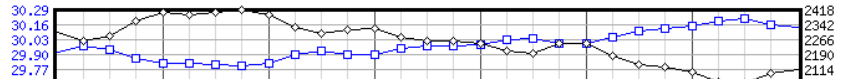
Lat: 34.92°
Lon: -117.87°
Elev: 2309ft
Rwy: 040/220



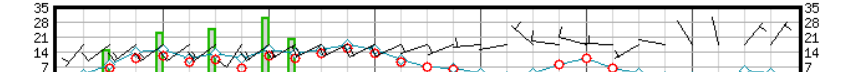
SLP (mb)
1000-500
Thickness (m)



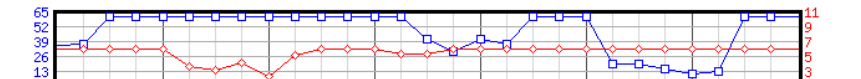
Altimeter (inches HG)
Press Alt (ft)



Wind Speed
NonCv Gusts
Wind Barbs
X-Wind (kts)



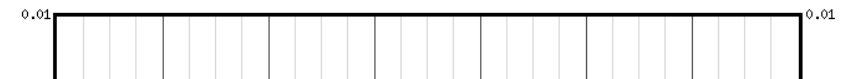
FSI
Fog Threat
Fog Probable
(0% - 100%)



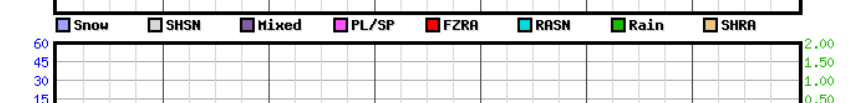
LCL (100ft AGL)
Visibilty (sm)
(MVFR flag)
(IFR flag)



3-Hr Precip Amount (inches) (liquid eq.)



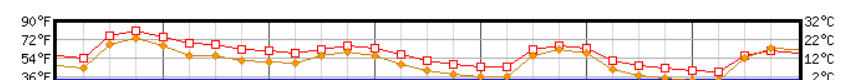
Cvnt Gusts (kt)
Hail Size (inches)



Temperature
Dewpoint (Left °F)
(Right °C)



ACC FITS
Heat Index (Left °F)
(Right °C)



31 OCT 12Z 1 NOV 00Z 1 NOV 12Z 2 NOV 00Z 2 NOV 12Z 3 NOV 00Z 3 NOV 12Z 4 NOV 00Z

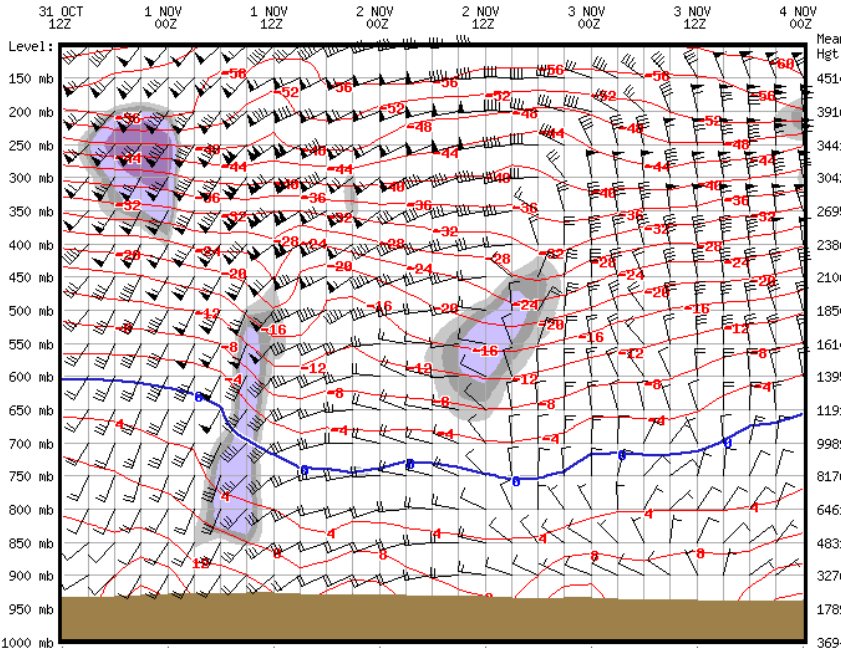
ID: KEDW
Name: EDWARDS AFB CA
Unclassified

150WS Forecast Meteogram



GFS-1.0DEG
Model Run: 2014103112Z

Lat: 34.92°
Lon: -117.87°
Elev: 2309ft
Rwy: 040/220



Cloud Cover
FEW
SCT
BKN
OVC

Temperature (°C)
(0°C Level)

Wind Barbs (kt)

Level Below Surface

SLP (mb)
1000-500
Thickness (m)

Altimeter (inches HG)
Press Alt (ft)

Wind Speed
NonV Gusts
Wind Barbs
X-Wind (kts)

FSI
Fog Threat
Fog Probable
(0% - 100%)

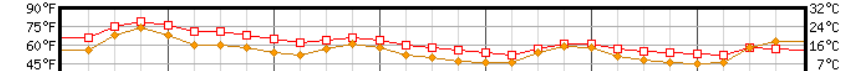
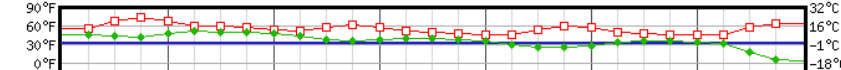
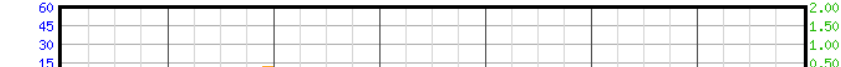
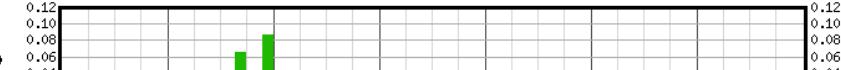
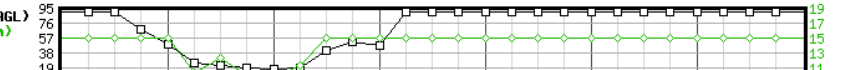
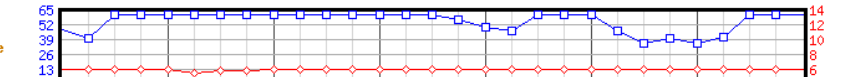
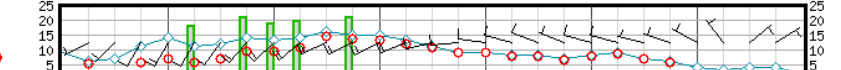
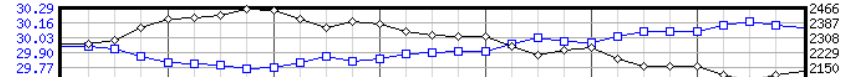
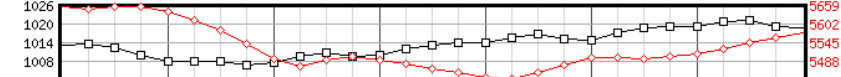
LCL (100ft AGL)
Visibilty (sm)
(MVFR flag)
(IFR flag)

3-Hr Precip Amount (inches) (liquid eq.)

Cvnt Gusts (kt)
Hail Size (inches)

Temperature
Dewpoint (Left °F) (Right °C)

ACC FITS
Heat Index (Left °F) (Right °C)



12Z 31 OCT 00Z 1 NOV 12Z 1 NOV 00Z 2 NOV 12Z 2 NOV 00Z 3 NOV 12Z 3 NOV 00Z 4 NOV

KEDW (723810) 31-OCT-2014 12Z NAM 03HR FORECAST SOUNDING VALID 31-OCT-2014
15Z

ALT	DIR	SPD	SHR	TEMP	DPT	PRESS	RH	ABHUM	DENSITY	I/R	V/S	VPS	PW
MSL FT	DEG	KTS	/SEC	DEG C	DEG C	MBS	PCT	G/M3	G/M3	N	KTS	MBS	MM
2398	218	3.0	.000	5.8	3.0	930.40	82	5.88	1158.39	295	652	7.56	0
3000	241	15.3	.035	11.3	8.8	910.14	85	8.61	1109.62	300	659	11.30	1
4000	237	18.0	.005	13.4	6.2	877.84	61	7.09	1062.94	280	661	9.37	4
5000	228	17.0	.005	12.7	0.3	846.64	42	4.70	1028.94	258	660	6.20	6
6000	217	16.0	.006	11.8	-5.4	816.49	29	3.06	996.36	241	659	4.02	7
7000	212	17.0	.003	10.4	-10.5	787.24	22	2.10	965.83	228	657	2.75	7
8000	212	17.7	.001	9.1	-15.2	758.92	16	1.44	935.93	217	655	1.87	8
9000	213	20.1	.004	8.2	-20.9	731.52	11	0.92	905.32	207	654	1.19	8
10000	216	22.2	.004	7.4	-21.0	705.00	11	0.89	874.99	200	653	1.15	9
11000	215	23.2	.002	5.5	-15.9	679.37	20	1.41	848.43	198	651	1.81	9
12000	217	24.8	.003	3.2	-11.8	654.49	32	1.94	823.86	196	648	2.48	10
13000	217	27.9	.005	1.0	-14.6	630.35	30	1.54	800.19	188	646	1.95	10
14000	218	27.1	.002	-1.2	-14.1	606.92	37	1.63	776.41	184	643	2.05	11
15000	217	26.2	.001	-4.1	-13.5	584.13	48	1.76	755.26	180	640	2.18	11
16000	218	25.5	.001	-6.5	-15.3	562.01	49	1.51	733.31	173	637	1.86	12
17000	220	25.8	.002	-8.4	-18.6	540.58	43	1.15	710.60	166	635	1.41	12
18000	222	28.0	.004	-9.9	-22.6	519.84	34	0.80	687.48	159	633	0.98	12
19000	223	30.8	.005	-11.4	-26.8	499.75	27	0.57	664.86	152	631	0.69	12
20000	223	33.8	.005	-13.1	-30.0	480.34	23	0.42	643.16	146	629	0.50	13
21000	224	37.0	.006	-14.8	-32.4	461.60	20	0.32	622.35	141	627	0.39	13
22000	224	38.9	.003	-17.1	-33.3	443.38	23	0.31	602.99	136	624	0.36	13
23000	224	40.5	.003	-19.5	-33.8	425.78	27	0.30	584.58	132	621	0.35	13
24000	224	41.7	.002	-22.2	-33.7	408.73	35	0.31	567.22	129	618	0.36	13
25000	223	43.2	.003	-24.8	-34.3	392.15	41	0.29	549.96	125	614	0.33	13
26000	222	44.9	.003	-27.4	-35.3	376.17	47	0.26	533.08	121	611	0.30	13
27000	220	46.9	.004	-29.7	-37.6	360.58	46	0.21	515.83	116	608	0.24	13
28000	219	49.1	.004	-31.9	-40.0	345.62	44	0.16	499.07	112	605	0.18	13
29000	220	52.0	.005	-34.0	-42.7	331.04	41	0.13	482.21	108	603	0.14	13
30000	221	55.0	.005	-36.1	-45.3	317.09	38	0.10	465.95	104	600	0.10	13
31000	222	56.4	.003	-38.4	-46.6	303.47	42	0.08	450.31	101	597	0.09	13
32000	223	57.9	.003	-40.7	-47.9	290.43	46	0.07	435.23	97	594	0.08	13
33000	224	58.9	.002	-43.2	-49.7	277.73	49	0.06	420.69	94	591	0.06	13
34000	225	59.8	.002	-45.7	-51.5	265.55	51	0.05	406.68	91	588	0.05	13
35000	225	60.4	.001	-48.2	-53.9	253.71	51	0.04	392.90	88	585	0.04	13
36000	225	60.9	.001	-50.7	-56.4	242.34	50	0.03	379.56	85	581	0.03	13
37000	226	61.7	.002	-53.1	-59.0	231.30	48	0.02	366.23	82	578	0.02	13
38000	227	62.7	.002	-55.5	-61.5	220.71	46	0.01	353.24	79	575	0.01	13
39000	227	64.9	.004	-57.1	-64.4	210.49	39	0.01	339.39	76	573	0.01	13
40000	227	67.5	.004	-58.4	-67.3	200.71	30	0.01	325.62	73	571	0.01	13
41000	227	69.2	.003	-59.0	-70.1	191.32	22	0.00	311.29	69	570	0.00	13
42000	226	70.8	.003	-59.4	-73.0	182.36	15	0.00	297.29	66	570	0.00	13
43000	226	70.5	.001	-60.0	-73.6	173.79	14	0.00	284.07	63	569	0.00	14
44000	227	70.0	.001	-60.6	-73.9	165.62	15	0.00	271.46	60	568	0.00	14
45000	228	67.4	.005	-61.8	-74.2	157.78	17	0.00	260.10	58	567	0.00	14
46000	228	64.6	.005	-63.0	-74.5	150.30	19	0.00	249.21	56	565	0.00	14
47000	229	61.0	.006	-64.3	-74.9	143.11	22	0.00	238.74	53	563	0.00	14
48000	230	57.4	.006	-65.5	-75.3	136.25	24	0.00	228.62	51	562	0.00	14
49000	231	53.5	.007	-66.4	-75.6	129.67	26	0.00	218.45	49	561	0.00	14
50000	231	49.6	.007	-67.1	-75.9	123.40	27	0.00	208.64	46	560	0.00	14
51000	230	45.5	.007	-67.1	-76.3	117.42	25	0.00	198.53	44	560	0.00	14
52000	229	41.3	.007	-67.1	-76.6	111.73	24	0.00	188.91	42	560	0.00	14

53000	228	38.3	.005	-67.3	-76.9	106.31	24	0.00	179.92	40	559	0.00	14
54000	227	35.3	.005	-67.5	-77.2	101.16	23	0.00	171.37	38	559	0.00	14
55000	225	32.9	.005	-67.8	-77.5	96.25	23	0.00	163.26	36	559	0.00	14
56000	222	30.9	.004	-68.1	-77.8	91.57	23	0.00	155.56	35	558	0.00	14
57000	218	29.1	.004	-68.4	-78.1	87.12	23	0.00	148.22	33	558	0.00	14
58000	221	28.3	.003	-68.0	-78.4	82.89	21	0.00	140.75	31	558	0.00	14
59000	224	27.6	.003	-67.5	-78.7	78.87	18	0.00	133.64	30	559	0.00	14
60000	227	27.0	.003	-67.1	-79.0	75.05	16	0.00	126.88	28	560	0.00	14
61000	228	23.7	.006	-65.9	-79.3	71.46	14	0.00	120.13	27	561	0.00	14
62000	230	20.4	.006	-64.8	-79.5	68.04	11	0.00	113.75	25	563	0.00	14
63000	232	17.2	.006	-63.6	-79.8	64.78	9	0.00	107.71	24	564	0.00	14
64000	233	14.5	.005	-63.0	-80.1	61.71	8	0.00	102.29	23	565	0.00	14
65000	234	12.0	.004	-62.7	-80.4	58.79	7	0.00	97.31	22	566	0.00	14
66000	235	9.5	.004	-62.4	-80.7	56.01	7	0.00	92.57	21	566	0.00	14
67000	237	7.0	.004	-62.0	-81.0	53.37	6	0.00	88.07	20	566	0.00	14
68000	244	5.9	.002	-61.8	-81.3	50.86	6	0.00	83.83	19	567	0.00	14
69000	254	5.8	.002	-61.7	-81.5	48.47	5	0.00	79.84	18	567	0.00	14
70000	264	6.0	.002	-61.5	-81.8	46.19	5	0.00	76.03	17	567	0.00	14

KEDW (723810) 31-OCT-2014 12Z NAM 04HR FORECAST SOUNDING VALID 31-OCT-2014
16Z

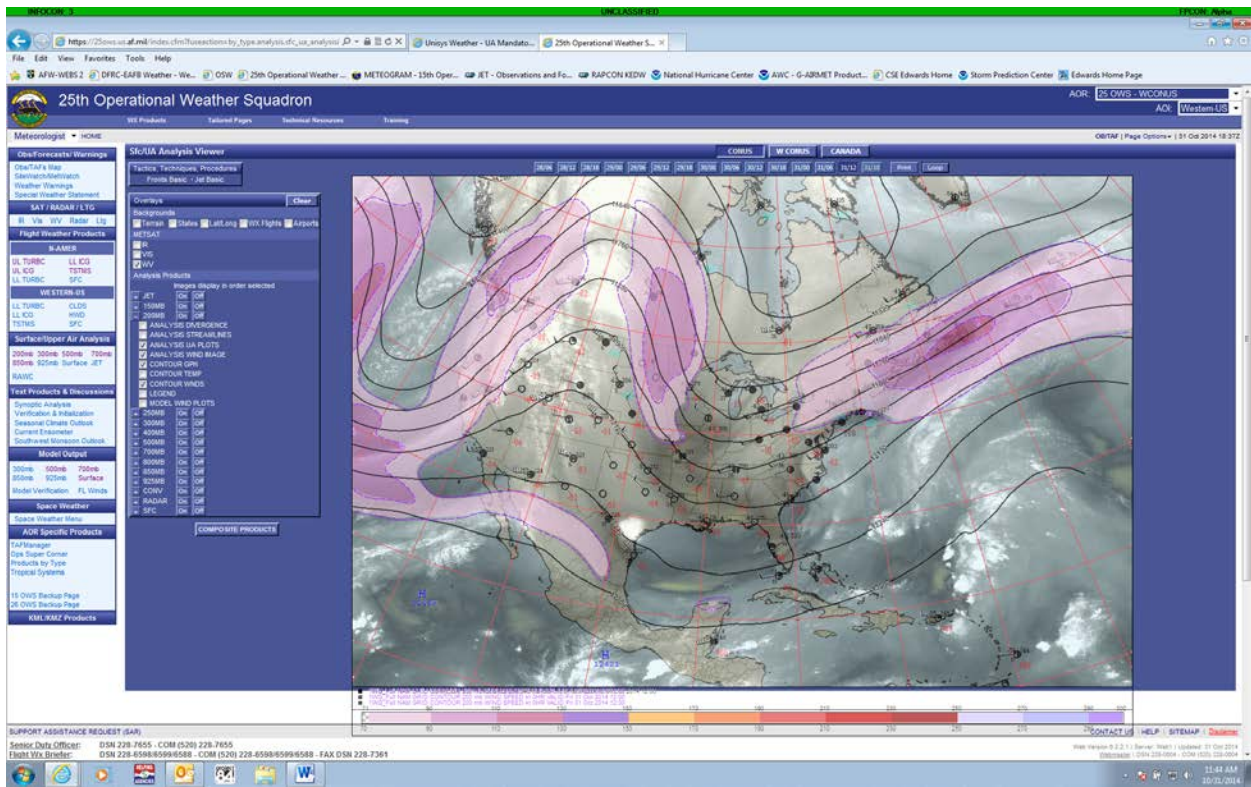
ALT	DIR	SPD	SHR	TEMP	DPT	PRESS	RH	ABHUM	DENSITY	I/R	V/S	VPS	PW	
MSL	FT	DEG	KTS	/SEC	DEG C	DEG C	MBS	PCT	G/M3	G/M3	N	KTS	MBS	MM
2398	223	4.0	.000	10.7	4.8	929.40	67	6.58	1136.68	294	658	8.62	0	
3000	238	14.3	.029	11.3	9.1	909.25	86	8.75	1108.24	301	659	11.49	1	
4000	231	16.0	.004	13.3	6.1	876.94	62	7.16	1062.17	281	661	9.47	4	
5000	224	16.0	.003	12.7	0.1	845.81	41	4.59	1027.98	257	660	6.05	6	
6000	216	15.0	.004	11.6	-4.9	815.66	31	3.23	995.95	242	658	4.24	7	
7000	209	16.0	.004	10.2	-9.5	786.43	24	2.26	965.44	229	657	2.95	8	
8000	207	17.4	.003	9.0	-15.0	758.11	16	1.45	935.16	217	655	1.89	8	
9000	208	19.1	.003	8.3	-21.3	730.73	10	0.84	904.14	207	654	1.09	9	
10000	210	21.4	.004	7.2	-21.8	704.25	10	0.82	874.75	200	653	1.06	9	
11000	210	23.5	.004	5.4	-16.4	678.62	20	1.39	848.03	198	651	1.79	9	
12000	211	25.6	.004	3.2	-12.3	653.76	31	1.86	822.93	195	648	2.37	10	
13000	211	28.0	.004	1.1	-15.3	629.65	28	1.47	798.97	187	646	1.85	10	
14000	210	28.0	.001	-1.5	-11.9	606.25	45	1.98	776.20	186	643	2.48	11	
15000	209	26.5	.003	-4.2	-14.3	583.47	45	1.63	754.80	179	640	2.02	11	
16000	211	26.0	.002	-6.4	-17.1	561.37	42	1.30	732.40	172	637	1.60	12	
17000	214	26.9	.003	-8.3	-20.1	539.96	38	1.01	709.65	165	635	1.23	12	
18000	217	29.1	.004	-10.0	-23.6	519.25	32	0.75	687.08	158	632	0.91	12	
19000	218	32.5	.006	-11.7	-27.0	499.16	27	0.56	664.77	152	630	0.68	12	
20000	220	35.9	.006	-13.3	-29.8	479.75	24	0.43	643.01	146	628	0.51	13	
21000	221	39.1	.006	-15.0	-32.1	461.01	21	0.34	621.91	141	626	0.40	13	
22000	221	42.2	.005	-17.3	-32.6	442.82	25	0.33	602.87	137	624	0.39	13	
23000	221	44.5	.004	-19.8	-33.0	425.22	30	0.32	584.59	132	621	0.38	13	
24000	221	45.7	.002	-22.5	-33.2	408.17	37	0.32	567.09	129	617	0.37	13	
25000	221	47.2	.003	-25.1	-34.2	391.59	43	0.29	549.87	125	614	0.34	13	
26000	221	48.9	.003	-27.8	-35.3	375.60	48	0.26	533.13	121	611	0.30	13	
27000	219	51.0	.004	-30.0	-37.6	360.02	47	0.21	515.73	116	608	0.24	13	
28000	218	53.1	.004	-32.2	-39.8	345.07	46	0.17	498.84	112	605	0.19	13	
29000	219	55.6	.004	-34.2	-42.2	330.50	44	0.13	481.88	108	603	0.15	13	
30000	219	58.1	.004	-36.3	-44.4	316.54	42	0.10	465.52	104	600	0.11	13	
31000	220	60.0	.003	-38.6	-45.7	302.94	46	0.09	449.89	101	597	0.10	13	
32000	220	61.9	.003	-40.9	-46.9	289.92	51	0.08	434.82	97	594	0.09	13	
33000	221	62.9	.002	-43.4	-48.3	277.22	58	0.07	420.37	94	591	0.07	14	

34000	222	63.8	.002	-46.0	-49.8	265.07	65	0.06	406.45	91	588	0.06	14
35000	222	64.4	.001	-48.6	-52.1	253.22	66	0.05	392.81	88	584	0.05	14
36000	221	64.9	.001	-51.2	-54.5	241.85	67	0.03	379.63	85	581	0.04	14
37000	222	66.2	.003	-53.7	-57.9	230.81	60	0.02	366.42	82	577	0.02	14
38000	223	67.7	.003	-56.2	-61.4	220.22	51	0.01	353.58	79	574	0.01	14
39000	223	69.2	.003	-57.7	-64.5	209.99	41	0.01	339.56	76	572	0.01	14
40000	223	70.8	.003	-59.0	-67.5	200.20	32	0.01	325.68	73	570	0.01	14
41000	223	72.3	.003	-59.3	-70.3	190.82	23	0.00	310.91	69	570	0.00	14
42000	222	73.9	.003	-59.5	-73.1	181.88	15	0.00	296.55	66	570	0.00	14
43000	223	73.5	.003	-59.9	-73.6	173.33	14	0.00	283.23	63	569	0.00	14
44000	225	72.9	.004	-60.5	-73.9	165.18	15	0.00	270.57	60	568	0.00	14
45000	226	70.2	.005	-61.7	-74.2	157.37	17	0.00	259.31	58	567	0.00	14
46000	227	67.3	.005	-63.0	-74.6	149.91	18	0.00	248.50	55	565	0.00	14
47000	228	63.2	.007	-64.2	-74.9	142.74	21	0.00	237.95	53	564	0.00	14
48000	228	59.1	.007	-65.3	-75.3	135.90	23	0.00	227.75	51	562	0.00	14
49000	228	54.7	.007	-66.1	-75.6	129.35	25	0.00	217.63	48	561	0.00	14
50000	228	50.5	.007	-66.8	-75.9	123.10	26	0.00	207.86	46	560	0.00	14
51000	227	46.8	.006	-67.0	-76.3	117.14	25	0.00	197.97	44	560	0.00	14
52000	225	43.1	.006	-67.2	-76.6	111.47	24	0.00	188.55	42	559	0.00	14
53000	224	40.9	.004	-67.4	-76.9	106.06	24	0.00	179.62	40	559	0.00	14
54000	223	38.8	.004	-67.7	-77.2	100.91	24	0.00	171.11	38	559	0.00	14
55000	221	36.8	.004	-67.9	-77.5	96.01	24	0.00	162.99	36	558	0.00	14
56000	219	34.9	.004	-68.2	-77.8	91.34	23	0.00	155.24	35	558	0.00	14
57000	217	33.0	.004	-68.4	-78.1	86.90	23	0.00	147.86	33	558	0.00	14
58000	220	31.9	.003	-68.0	-78.4	82.68	21	0.00	140.43	31	558	0.00	14
59000	223	30.9	.003	-67.7	-78.7	78.67	19	0.00	133.37	30	559	0.00	14
60000	226	29.7	.003	-67.2	-79.0	74.86	17	0.00	126.64	28	559	0.00	14
61000	226	25.9	.006	-66.1	-79.3	71.27	14	0.00	119.90	27	561	0.00	14
62000	227	22.1	.006	-64.9	-79.5	67.86	12	0.00	113.52	25	562	0.00	14
63000	228	18.2	.006	-63.8	-79.8	64.60	9	0.00	107.49	24	564	0.00	14
64000	227	15.5	.005	-63.2	-80.1	61.54	8	0.00	102.13	23	565	0.00	14
65000	226	13.2	.004	-63.0	-80.4	58.62	7	0.00	97.20	22	565	0.00	14
66000	224	11.0	.004	-62.8	-80.7	55.85	7	0.00	92.50	21	565	0.00	14
67000	221	8.8	.004	-62.6	-81.0	53.21	6	0.00	88.03	20	566	0.00	14
68000	225	7.8	.002	-62.4	-81.3	50.70	6	0.00	83.81	19	566	0.00	14
69000	233	7.6	.002	-62.3	-81.6	48.31	5	0.00	79.81	18	566	0.00	14
70000	242	7.5	.002	-62.1	-81.8	46.04	5	0.00	76.00	17	566	0.00	14

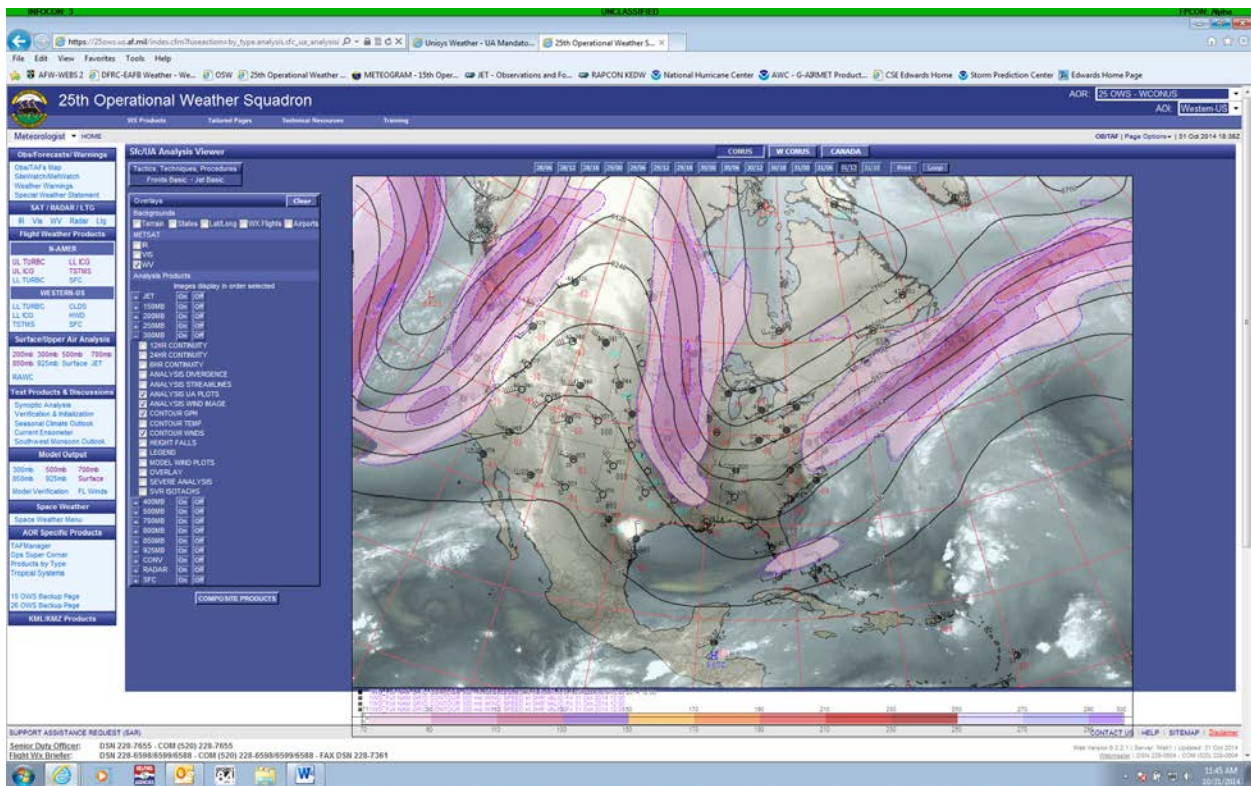
KEDW (723810) 31-OCT-2014 12Z NAM 05HR FORECAST SOUNDING VALID 31-OCT-2014
17Z

ALT	DIR	SPD	SHR	TEMP	DPT	PRESS	RH	ABHUM	DENSITY	I/R	V/S	VPS	PW	
MSL	FT	DEG	KTS	/SEC	DEG C	DEG C	MBS	PCT	G/M3	G/M3	N	KTS	MBS	MM
2398	238	7.0	.000	15.6	7.8	929.50	60	7.98	1116.59	297	664	10.64	0	
3000	246	8.4	.005	12.5	7.9	909.58	74	8.11	1104.56	296	660	10.68	1	
4000	231	16.0	.014	13.4	5.8	877.29	60	6.99	1062.34	280	661	9.25	4	
5000	222	15.0	.004	12.8	-0.7	846.12	39	4.39	1028.10	256	660	5.80	6	
6000	213	15.0	.004	11.5	-5.0	815.97	31	3.21	996.65	242	658	4.22	7	
7000	206	15.1	.003	10.2	-9.4	786.73	24	2.26	965.75	229	657	2.96	8	
8000	204	16.7	.003	9.1	-14.8	758.41	17	1.47	935.15	217	655	1.92	8	
9000	205	19.1	.004	8.3	-21.8	731.02	10	0.84	904.47	207	654	1.09	8	
10000	207	21.4	.004	7.2	-21.6	704.55	11	0.88	875.05	200	653	1.14	9	
11000	206	23.7	.004	5.4	-16.4	678.90	20	1.40	848.25	198	651	1.80	9	
12000	206	26.6	.005	3.3	-11.7	654.03	32	1.95	822.94	196	649	2.48	10	
13000	207	29.0	.004	1.1	-14.7	629.92	30	1.57	799.25	188	646	1.99	10	
14000	205	29.0	.001	-1.6	-11.1	606.50	49	2.11	776.91	187	643	2.65	11	

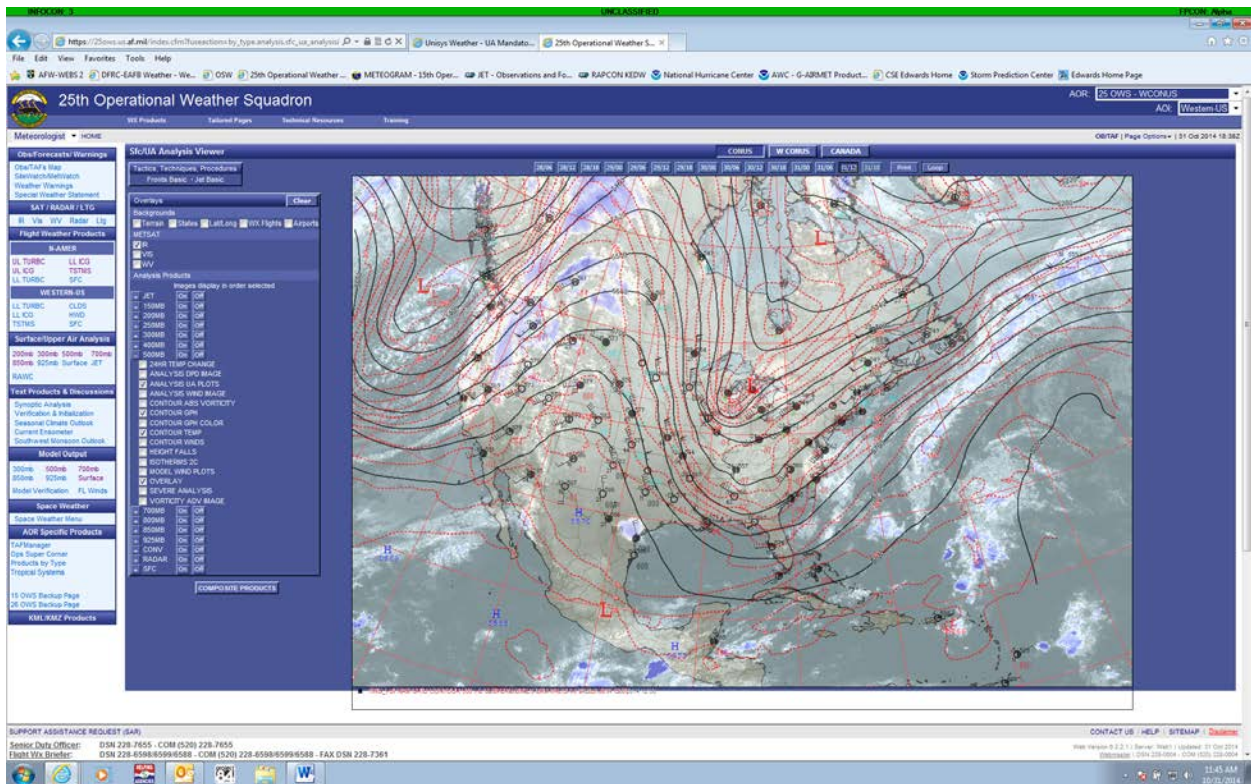
15000	205	28.2	.001	-4.1	-14.8	583.72	43	1.57	754.78	178	640	1.95	11
16000	207	28.5	.002	-6.1	-18.7	561.62	36	1.13	732.07	171	637	1.40	12
17000	211	29.8	.004	-8.1	-22.0	540.22	31	0.85	709.47	164	635	1.04	12
18000	214	32.0	.005	-10.0	-24.4	519.51	29	0.68	687.43	158	632	0.83	12
19000	217	34.8	.005	-11.9	-25.5	499.40	30	0.62	665.54	152	630	0.75	12
20000	218	38.2	.006	-13.6	-28.3	479.97	27	0.49	643.97	147	628	0.58	13
21000	219	42.1	.007	-15.3	-32.4	461.22	21	0.33	622.85	141	626	0.39	13
22000	219	44.6	.004	-17.6	-32.0	442.98	27	0.36	603.58	137	623	0.42	13
23000	219	47.0	.004	-20.0	-32.1	425.36	33	0.35	585.07	133	620	0.41	13
24000	220	49.4	.004	-22.5	-33.0	408.30	38	0.33	567.33	129	617	0.38	13
25000	220	51.2	.003	-25.2	-33.8	391.72	45	0.31	550.11	125	614	0.36	13
26000	221	52.9	.003	-27.9	-34.4	375.73	54	0.29	533.46	121	611	0.33	13
27000	220	55.5	.005	-30.1	-36.5	360.14	53	0.24	516.06	117	608	0.26	13
28000	219	58.1	.005	-32.3	-38.7	345.17	52	0.19	499.15	113	605	0.21	13
29000	219	60.6	.004	-34.3	-41.0	330.59	49	0.15	482.07	108	603	0.16	13
30000	219	63.1	.004	-36.3	-43.3	316.63	47	0.12	465.61	105	600	0.13	13
31000	220	65.0	.003	-38.6	-44.5	303.03	53	0.11	449.98	101	597	0.11	13
32000	220	66.9	.003	-40.9	-45.6	290.01	60	0.09	434.91	98	594	0.10	13
33000	220	67.4	.001	-43.5	-47.9	277.30	61	0.07	420.54	94	591	0.08	13
34000	220	67.9	.001	-46.1	-50.2	265.14	62	0.06	406.70	91	587	0.06	13
35000	220	68.4	.001	-48.8	-52.4	253.28	65	0.04	393.27	88	584	0.05	13
36000	220	68.9	.001	-51.6	-54.6	241.90	69	0.03	380.31	85	580	0.03	14
37000	221	70.5	.004	-54.0	-57.9	230.84	62	0.02	366.93	82	577	0.02	14
38000	223	72.6	.005	-56.3	-61.4	220.24	51	0.01	353.81	79	574	0.01	14
39000	223	73.4	.002	-58.0	-64.5	209.99	42	0.01	339.97	76	572	0.01	14
40000	223	73.9	.001	-59.5	-67.5	200.19	33	0.01	326.37	73	570	0.01	14
41000	223	74.9	.002	-60.0	-70.4	190.79	25	0.00	311.77	69	569	0.00	14
42000	223	75.9	.002	-60.3	-73.1	181.82	16	0.00	297.56	66	569	0.00	14
43000	223	74.5	.003	-60.6	-73.6	173.25	15	0.00	283.89	63	568	0.00	14
44000	224	72.9	.003	-60.9	-73.9	165.08	15	0.00	270.90	60	568	0.00	14
45000	225	70.7	.004	-61.8	-74.2	157.27	17	0.00	259.18	58	567	0.00	14
46000	226	68.3	.005	-62.7	-74.6	149.81	18	0.00	247.99	55	565	0.00	14
47000	226	64.2	.007	-63.8	-74.9	142.66	20	0.00	237.42	53	564	0.00	14
48000	226	59.9	.007	-64.9	-75.3	135.84	21	0.00	227.20	51	563	0.00	14
49000	225	55.1	.008	-65.6	-75.6	129.30	23	0.00	217.02	48	562	0.00	14
50000	225	50.5	.008	-66.3	-75.9	123.08	24	0.00	207.24	46	561	0.00	14
51000	224	47.3	.006	-66.6	-76.3	117.13	24	0.00	197.57	44	560	0.00	14
52000	222	44.1	.006	-67.0	-76.6	111.47	24	0.00	188.36	42	560	0.00	14
53000	222	42.0	.004	-67.2	-76.9	106.06	24	0.00	179.45	40	559	0.00	14
54000	221	39.9	.004	-67.5	-77.2	100.92	23	0.00	170.96	38	559	0.00	14
55000	220	37.8	.004	-67.7	-77.5	96.02	23	0.00	162.80	36	559	0.00	14
56000	219	35.9	.004	-67.8	-77.8	91.36	22	0.00	154.98	35	559	0.00	14
57000	217	34.0	.004	-67.9	-78.1	86.93	21	0.00	147.54	33	558	0.00	14
58000	221	32.2	.005	-67.5	-78.4	82.72	19	0.00	140.13	31	559	0.00	14
59000	225	30.5	.005	-67.1	-78.7	78.72	17	0.00	133.08	30	560	0.00	14
60000	229	28.8	.005	-66.6	-79.0	74.91	15	0.00	126.37	28	560	0.00	14
61000	229	24.7	.007	-65.6	-79.3	71.33	13	0.00	119.70	27	562	0.00	14
62000	229	20.5	.007	-64.5	-79.5	67.92	11	0.00	113.38	25	563	0.00	14
63000	230	16.4	.007	-63.4	-79.8	64.67	9	0.00	107.40	24	565	0.00	14
64000	229	13.7	.005	-62.9	-80.1	61.61	8	0.00	102.09	23	565	0.00	14
65000	227	11.7	.003	-62.8	-80.4	58.69	7	0.00	97.20	22	565	0.00	14
66000	224	9.7	.003	-62.7	-80.7	55.92	7	0.00	92.55	21	566	0.00	14
67000	219	7.7	.003	-62.5	-81.0	53.27	6	0.00	88.13	20	566	0.00	14
68000	223	6.8	.002	-62.4	-81.3	50.76	6	0.00	83.92	19	566	0.00	14
69000	234	6.7	.002	-62.3	-81.5	48.37	5	0.00	79.91	18	566	0.00	14
70000	245	6.8	.002	-62.1	-81.8	46.09	5	0.00	76.10	17	566	0.00	14



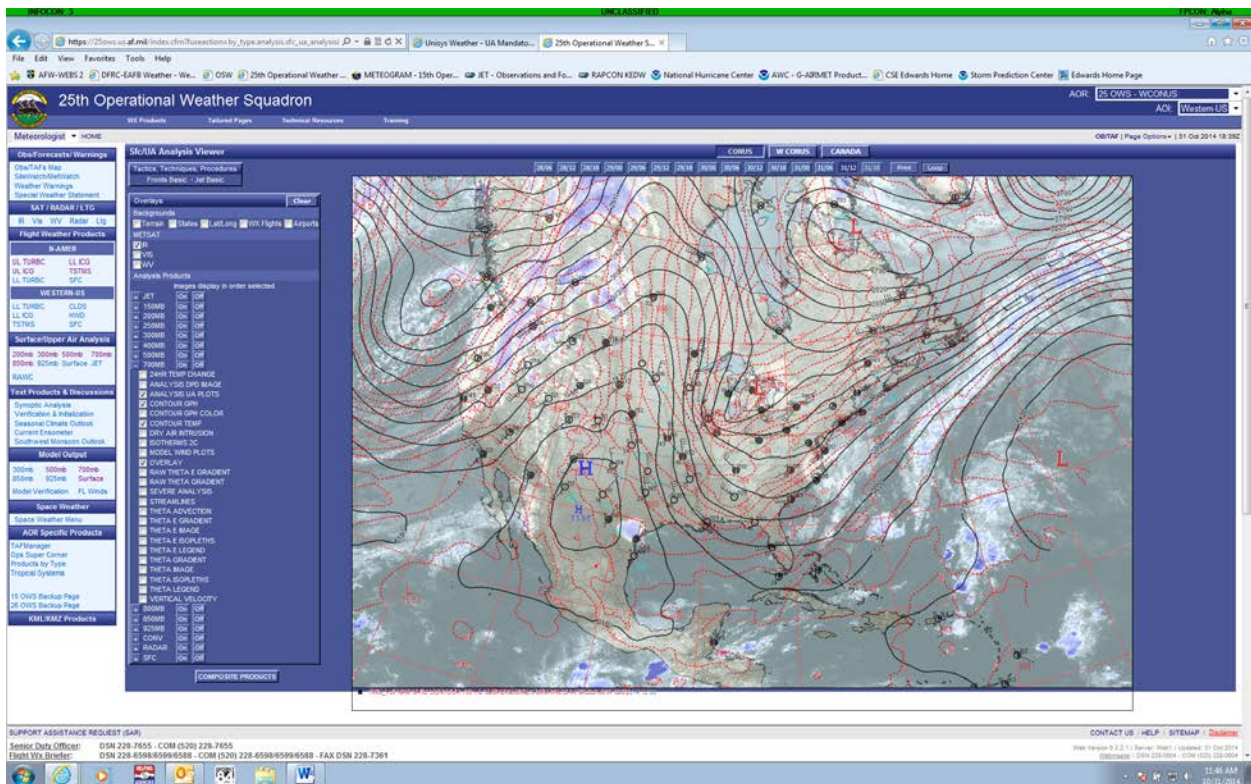
200mb 39K 31/12Z



300mb 30K 31/12Z



500mb 18K 31/12Z



700mb 10K 31/12Z

