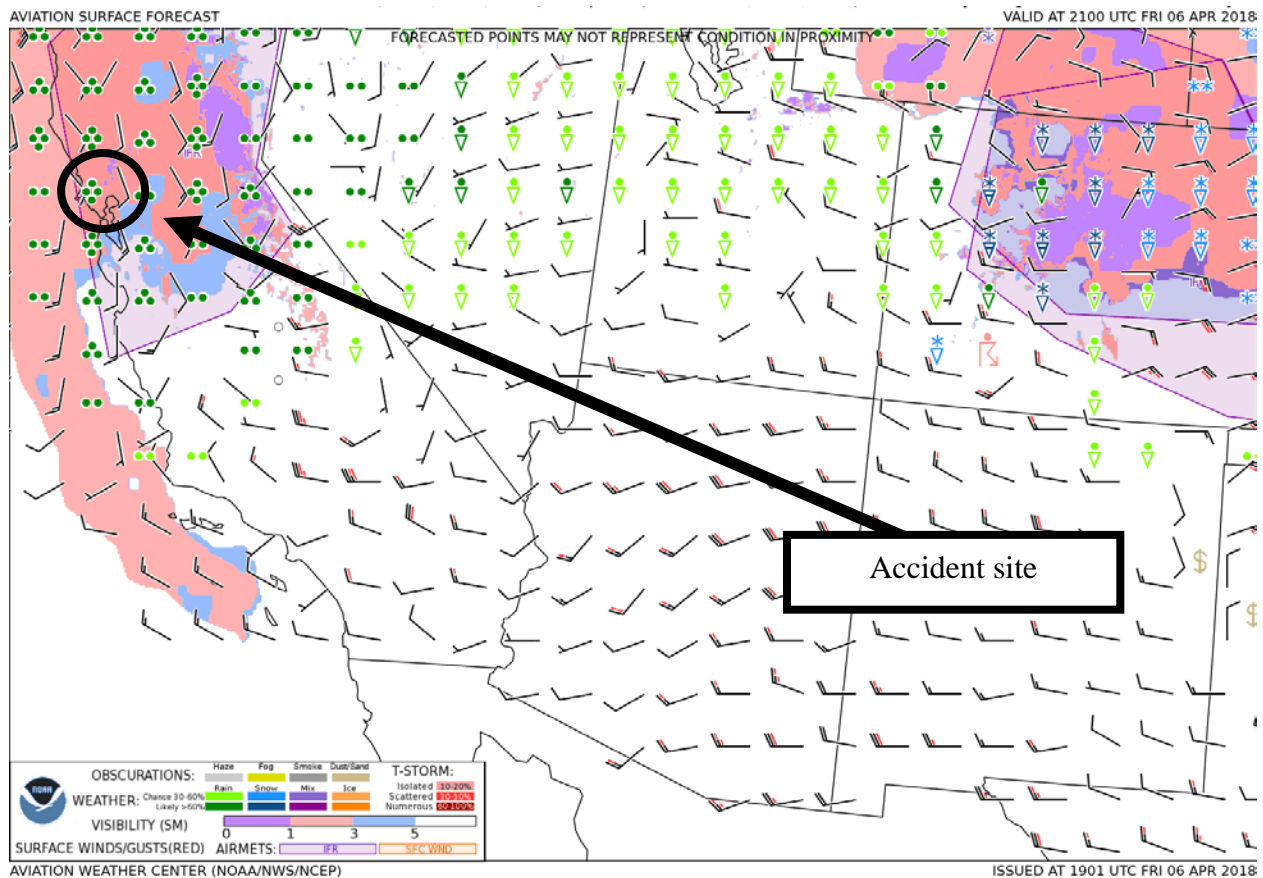


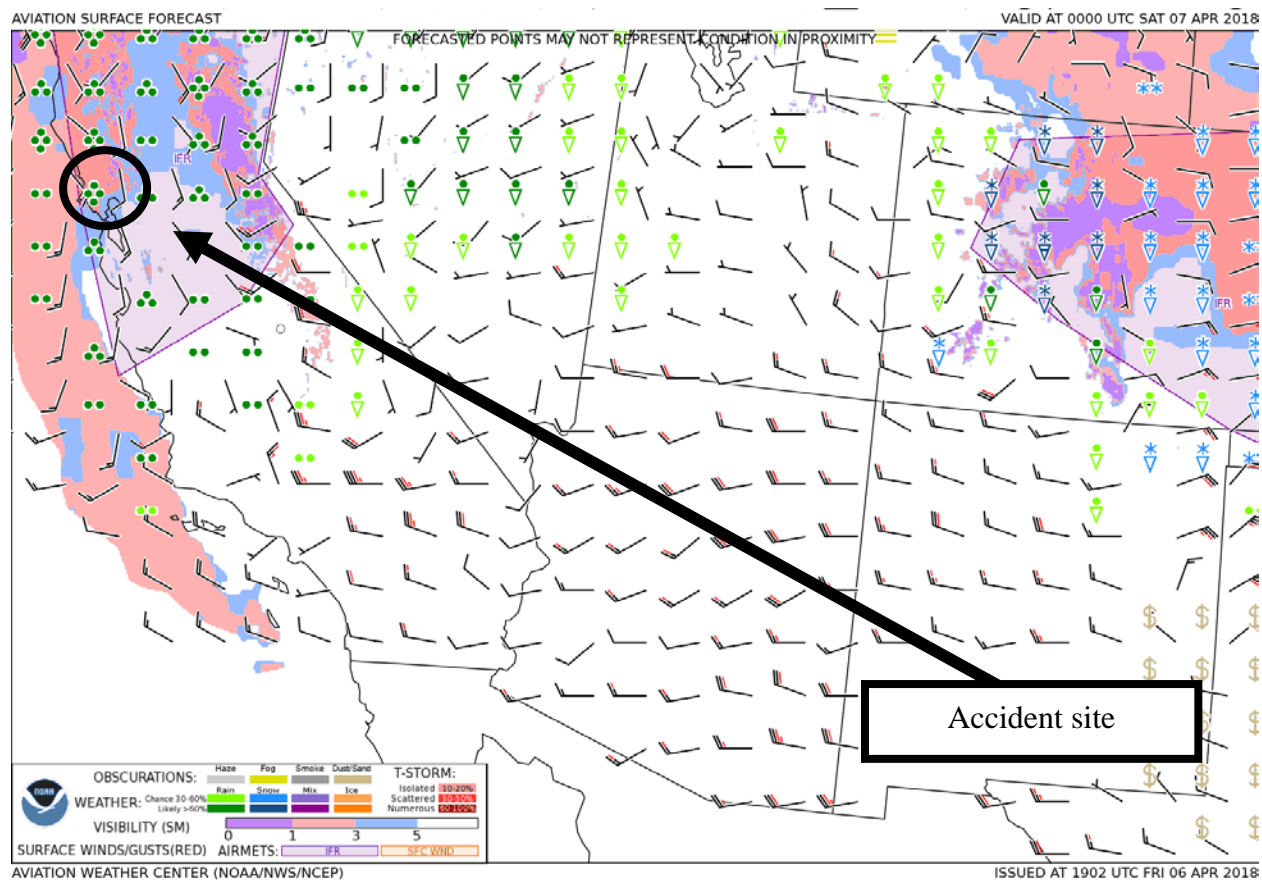
### Attachment 3 for ANC18FA028 Weather Factual Report

The following Graphical Forecasts for Aviation (GFA)<sup>1</sup> images are the exact images and text that would have been made available to the accident pilot had they received a Leidos briefing before departure or if the accident pilot checked the GFA products on the aviationweather.gov website.

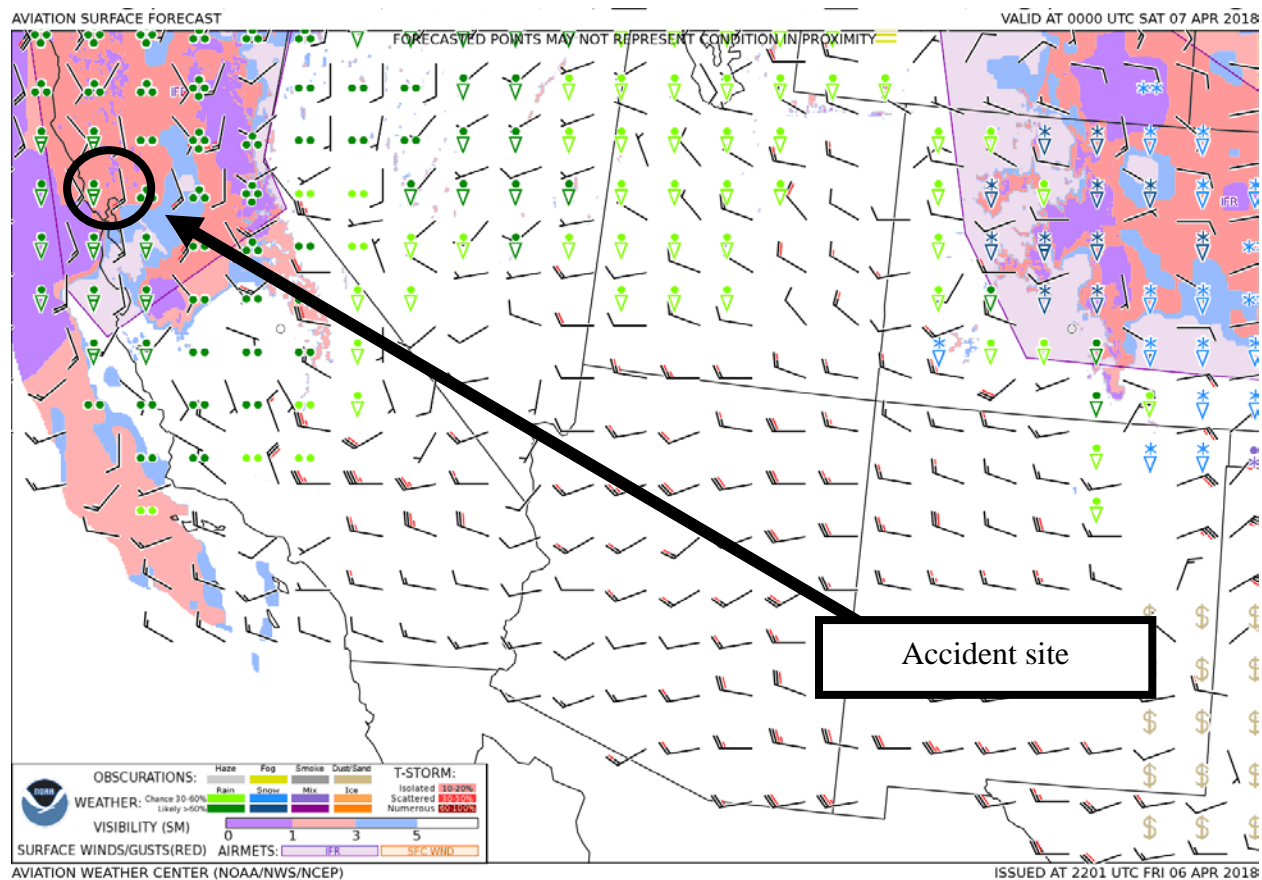


**Figure 1 – GFA Surface Forecast valid at 1400 PDT with forecast issued at 1201 PDT**

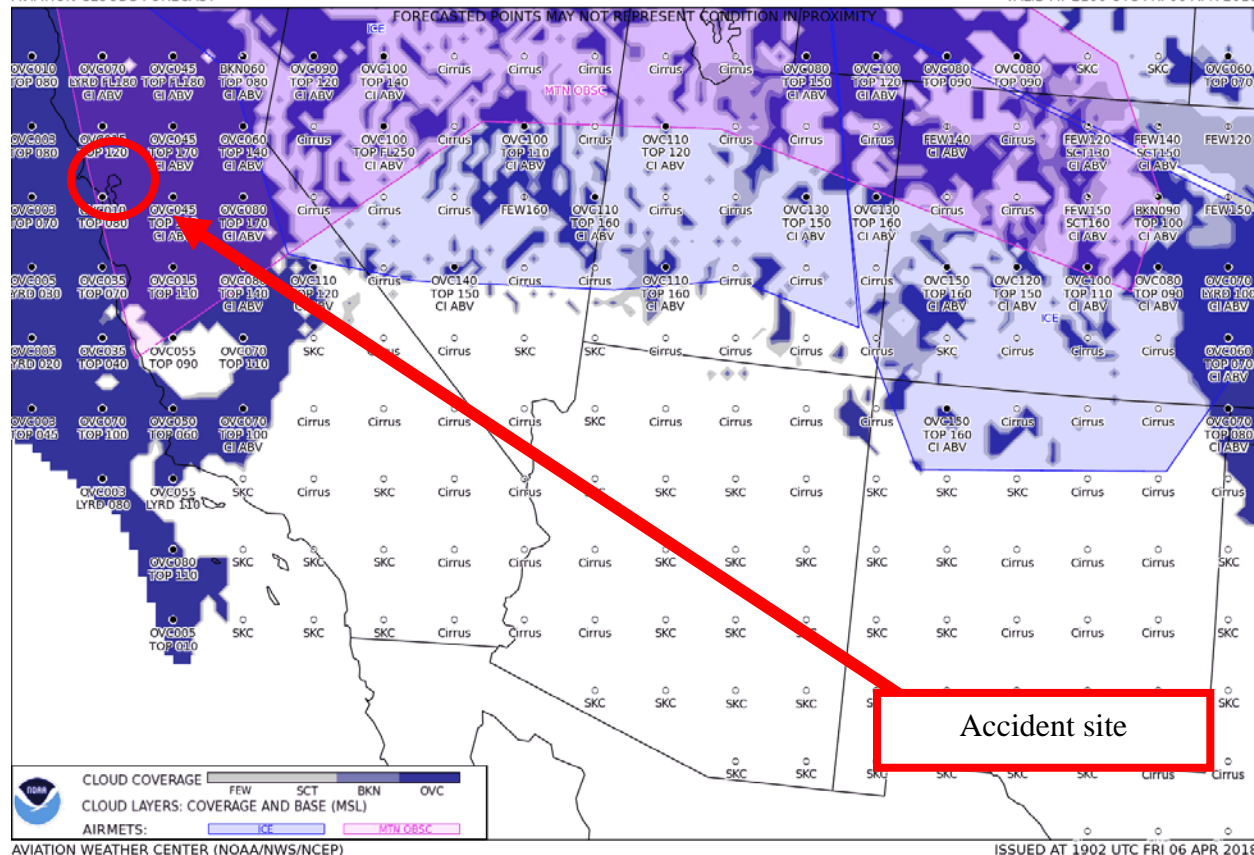
<sup>1</sup> For more information on the GFA please see: <http://aviationweather.gov/gfa>



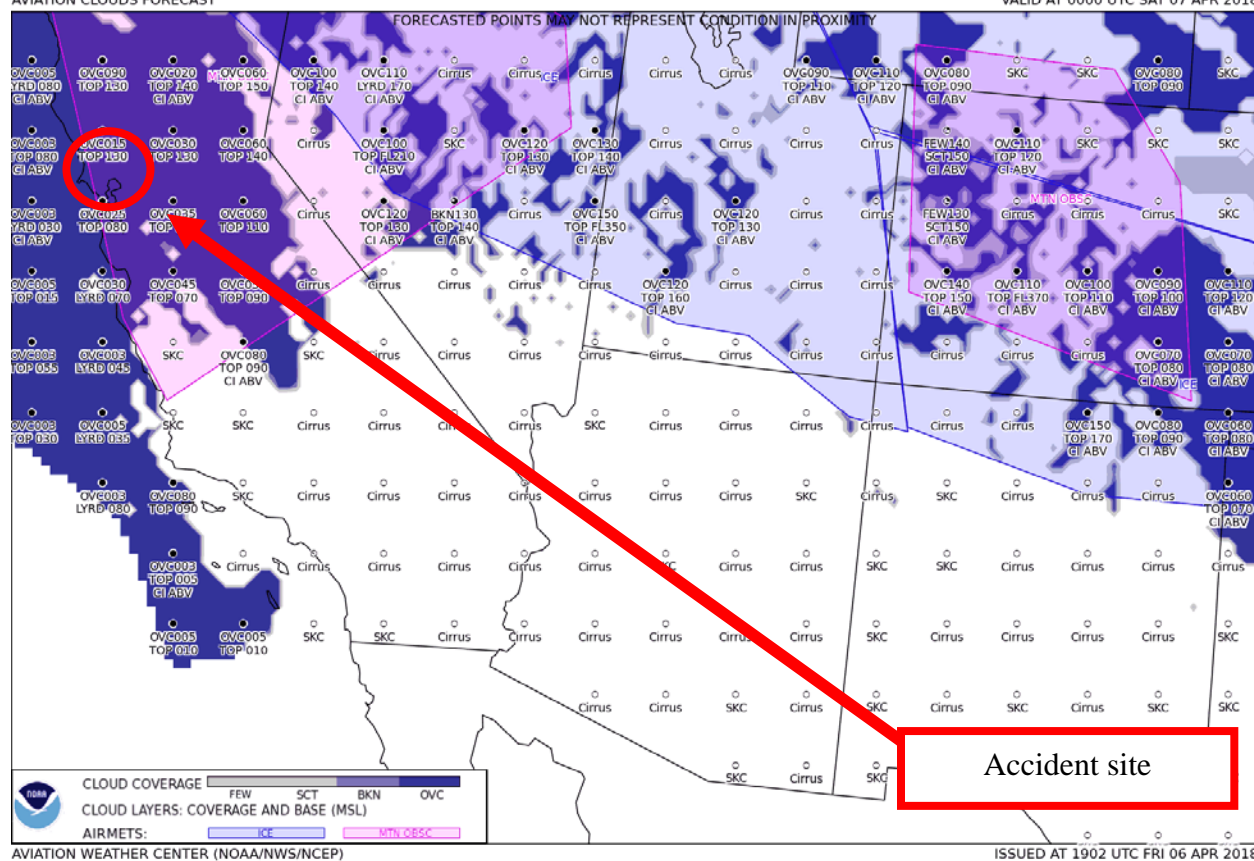
**Figure 2 – GFA Surface Forecast valid at 1700 PDT with forecast issued at 1202 PDT**



**Figure 3 – GFA Surface Forecast valid at 1700 PDT with forecast issued at 1501 PDT**

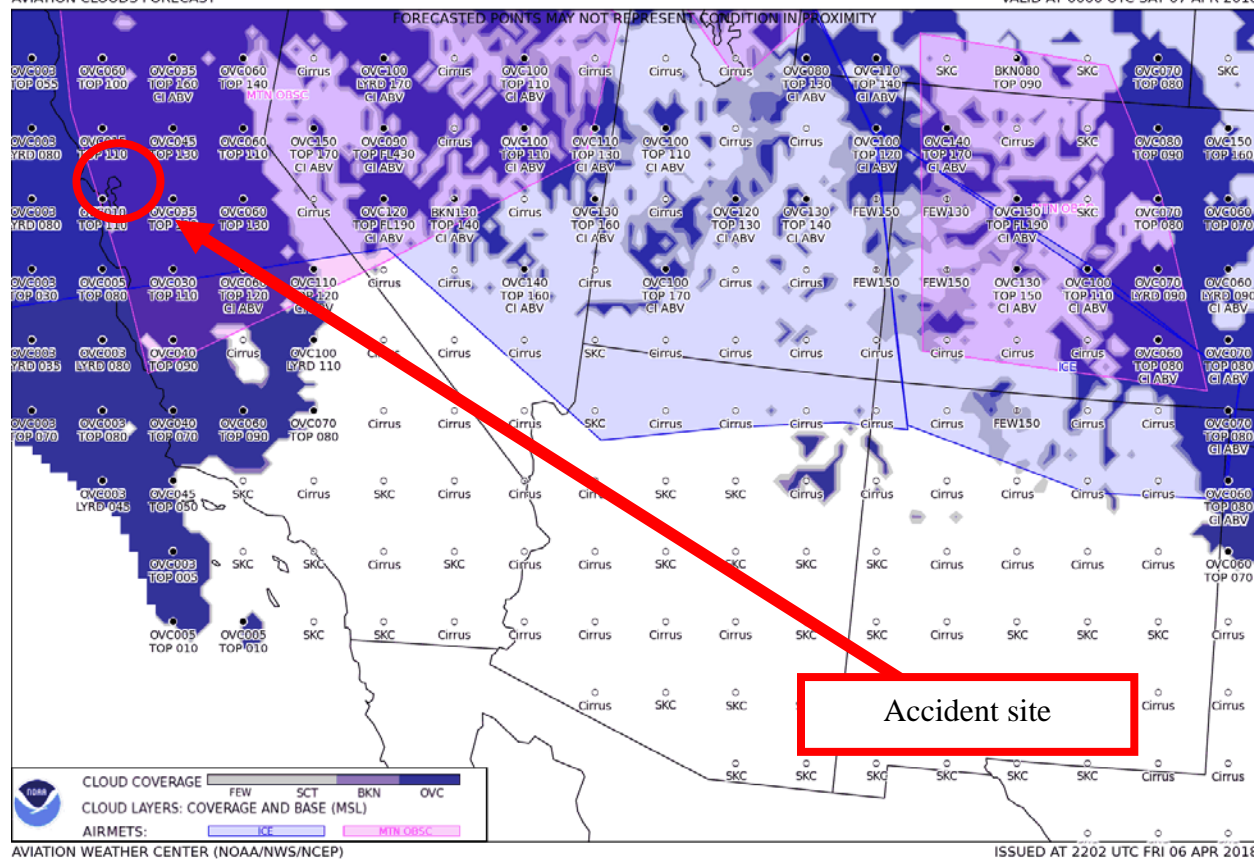


**Figure 4 – GFA Aviation Clouds Forecast valid at 1400 PDT with forecast issued at 1202 PDT**



**Figure 5 – GFA Aviation Clouds Forecast valid at 1700 PDT with forecast issued at 1202 PDT**





**Figure 6 – GFA Aviation Clouds Forecast valid at 1700 PDT with forecast issued at 1202 PDT**