

**CATERPILLAR 966M**  
**Wheel Loader**

MACHINE NUMBER - X2400733

**MACHINE**

MANUFACTURER CATERPILLAR  
MODEL 966M  
SERIAL NUMBER- KJP00608  
YEAR 2015  
WEIGHT 53,311 LBS

**OPERATING SPECIFICATIONS**

TIPPING LOAD 32,259 LBS  
BREAKOUT FORCE 38,886 LBS  
FUEL TANK 100.4GAL  
HYD TANK 29 GAL

**ENGINE**

MANUFACTURER CATERPILLAR  
MODEL CAT C9.3  
NET POWER 267HP

**HYDRAULIC SYSTEM**

LOADER HYD FLOW 90 GAL/MIN  
CYCLE TIME RAISE 5.9 SEC

**TRANSMISSION**

MANUFACTURER CATERPILLAR  
MODEL HYDRAULIC HYSTAT  
TRAVEL SPEED 23 MPH

**RECOMMENDED LUBRICANTS**

ENGINE CAT 15/40 CF-4  
HYDRAULIC CAT HYDO  
TRANSMISSION CAT TDTO

**THIS FORM IS USED TO DESIGNATE THAT RIDERS  
ARE ALLOWED ON THIS MACHINE**

Machine ID # X2400733

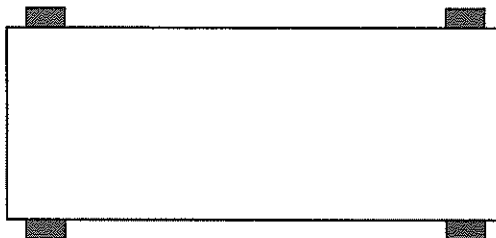
1. Riders are allowed to use all factory supplied seating on this machine that is not being utilized by the people or persons operating this machine.
2. Riders are allowed to ride on this machine in the locations specified below as long as they meet the requirements of BNSF Safety Rule S.14.1 Riding on Machines, which states in part:

*Ride on machines only if you are the machine operator or are authorized by the manager in charge. When riding on an on-track machine:*

- *Notify the machine operator before boarding.*
- *Sit where the operator indicates, or if directed to stand, hold on firmly at all times and maintain three points of contact.*

**Specified Location on Machine:**

1. SEATED OUTSIDE OF CAB ON EITHER REAR FENDER
- 2.
- 3.
- 4.
- 5.



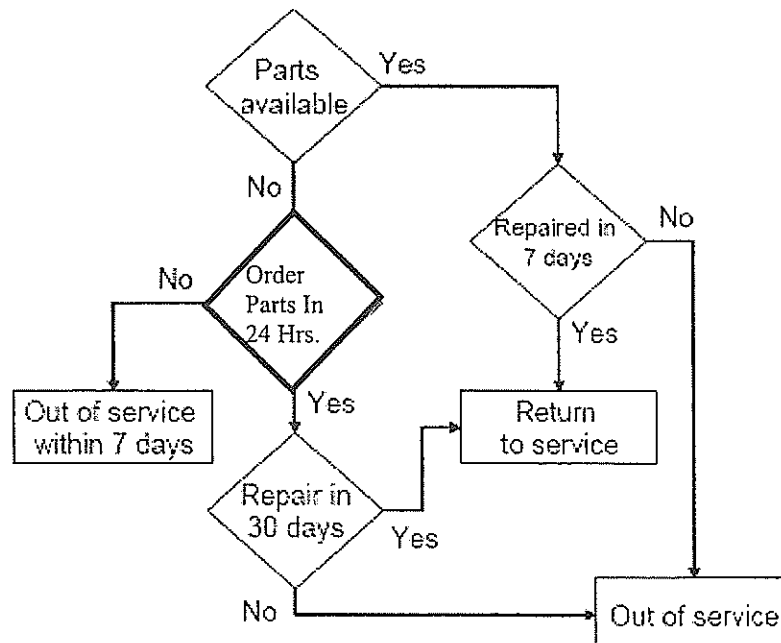
Use diagram if necessary to indicate where riders may ride on this machine.

Form Completed by: \_\_\_\_\_



F.R.A.  
Machine Operator Minimum  
Safety Requirements

- Working fire extinguisher
  - Unlocked when in work & travel
  - Charged and inspected
- Flagging kits
  - Trailing and Leading machines must have approved flagging kits
- First-Aid kit
  - Available on each machine
- Walkways, stairs and ladders free of obstructions
  - Clean
  - No tripping hazards
- Approved Rider document
  - Has machine number
  - Clean and legible
  - Contained in log book
  - Enforced by individual machine operator
- Know, Understand and Document your Authority
  - Verify your working limits
- Pre-Work Inspections
  - Perform a complete machine inspection prior to shift ( EI 14.3.2)
    - To include lights, brakes, fire ext, first aid kit, mirrors, horn, backup alarm, windshields, walkways, flagging kits, etc.
- Report non-complainant defects (must have documentation)
  - Fill out and hang notification tag in plain view of operator
  - Document the defect on the reverse side of FRA-RSAC Safety Exception Information for RMMS document in your log book
  - Inform your supervisor and mechanic using the BNSF maintenance log form 1410044





# 966M/972M

Wheel Loaders



	966M	972M
<b>Engine Model</b>	Cat® C9.3 ACERT™	Cat C9.3 ACERT
<b>Maximum Gross Power – SAE J1995</b>	232 kW (311 hp)	251 kW (337 hp)
<b>Maximum Net Power – SAE J1349</b>	206 kW (276 hp)	223 kW (299 hp)
<b>Bucket Capacities</b>	2.5-9.2 m <sup>3</sup> (3.25-12.0 yd <sup>3</sup> )	2.9-9.9 m <sup>3</sup> (3.75-13.0 yd <sup>3</sup> )
<b>Operating Weight</b>	23 220 kg (51,176 lb)*	24 896 kg (54,871 lb)**

\*For 4.2 m<sup>3</sup> (5.5 yd<sup>3</sup>) general purpose buckets with BOCE.

\*\*For 4.8 m<sup>3</sup> (6.28 yd<sup>3</sup>) general purpose buckets with BOCE.