

INSPECT PASSENGER LARGE EMERGENCY ESCAPE SIDE WINDOW GLAZING (DAILY)**Applicable Cars:**

A, B

Equipment Condition:

Parking Brake Applied

Wheels Chocked

References:

01 50 10 01 H

Tools and Test Equipment:

None

Supplies:

None

NOTE

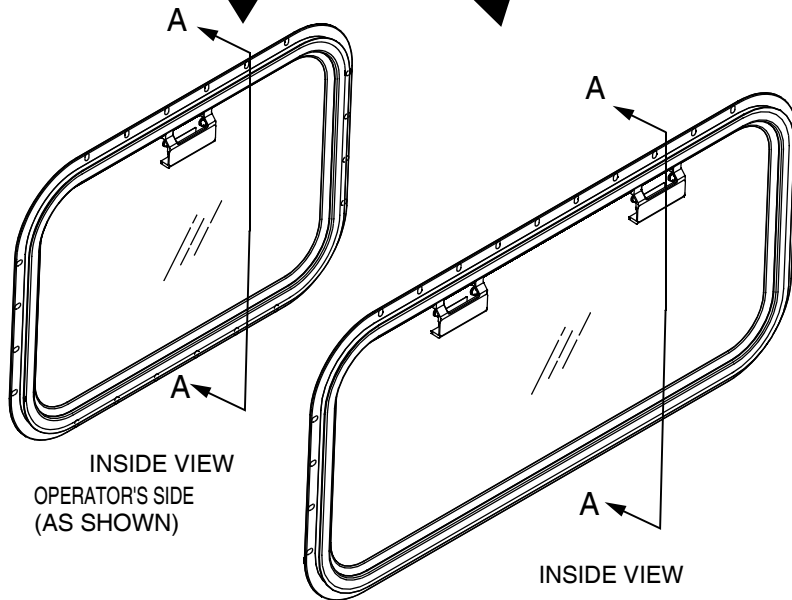
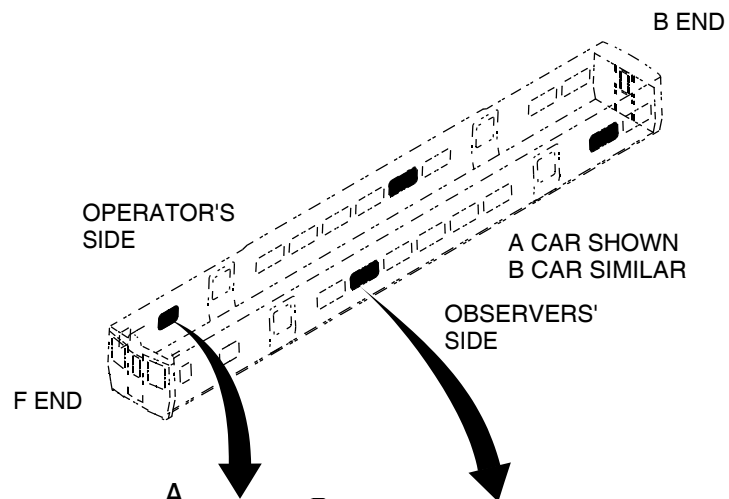
This procedure is also applicable to the item in the table below.

REFERENCE TASK

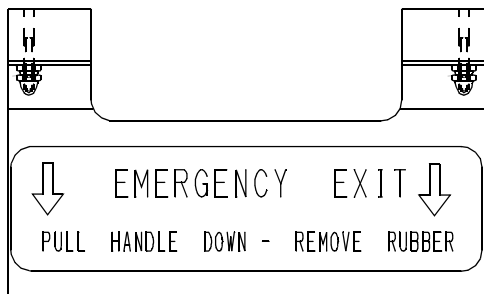
DESCRIPTION	ELIST-TASK CODE	PART NUMBER
Small Passenger Emergency Escape Side Window Glazing	01 50 10 02 A	ELC61046

INSPECT PASSENGER LARGE EMERGENCY ESCAPE SIDE WINDOW GLAZING

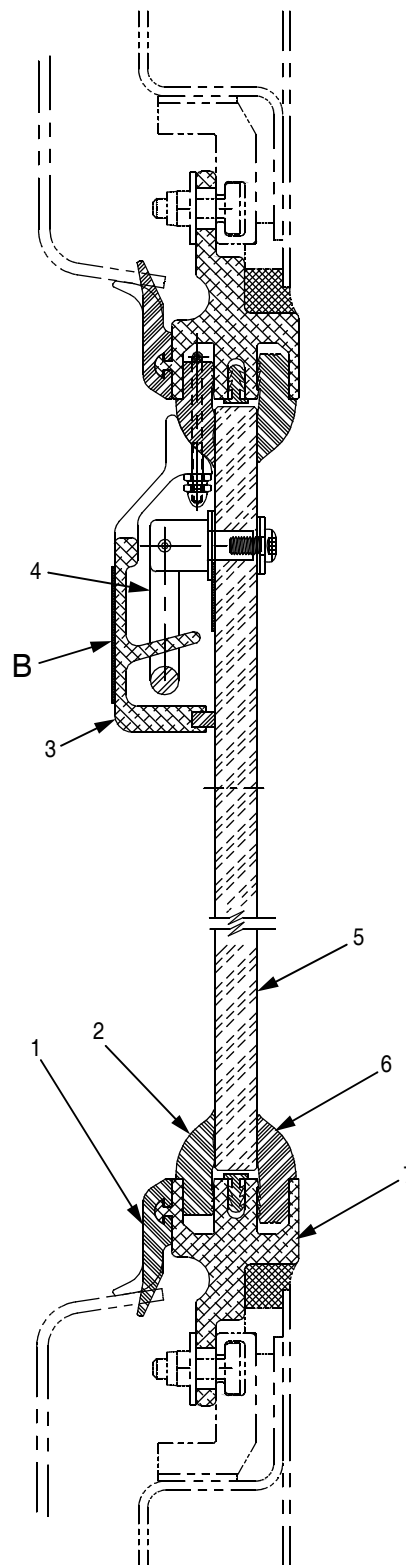
1. Ensure red emergency pull handles (3) attached to glazing tire (2) are in proper position over the hinged pull handles (4) attached to the glazing (5).
2. Ensure the red pull handles (3) are securely attached to the glazing tire (2).
3. Ensure the EMERGENCY EXIT, PULL HANDLE DOWN - REMOVE RUBBER decal on the pull handles (3) are intact and legible.
4. Ensure the PULL TO REMOVE decal attached to the pull handles (4) (located under the red pull handles) are intact, legible, and securely attached to glazing (5).
5. Inspect inner glazing tire (2) for damage. Ensure tire is fully seated in the aluminum window frame.
6. Inspect the outer glazing tire (6) for damage. Ensure tire is fully seated in the aluminum window frame.
7. Inspect glazing (5) for damage.
8. Inspect frame (7) for damage.
9. Inspect glazing and surrounding area for any signs of water ingress and resulting damage.
10. Ensure that the interior trim strip (1) is in place and undamaged.
11. Replace passenger large emergency escape and rescue access side window as necessary, refer to 01 50 10 01 H.



OPERATOR'S SIDE (AS SHOWN)
OBSERVERS' SIDE (ROTATED 180°)



DETAIL B



VIEW A-A

END OF INSPECT

MMM01F245S00A

Follow-On Task(s)

Clean emergency escape and rescue access side window.

TEST PASSENGER LARGE EMERGENCY ESCAPE SIDE WINDOW GLAZING (184 DAYS)**Applicable Cars:**

A, B

Equipment Condition:

Parking Brake Applied

Wheels Chocked

References:

01 50 10 01 01 H

Tools and Test Equipment:

Pull Force Gauge (0-50 lbs)

Rubber Mallet

Supplies:

Soapy Water

Lint-Free Cloth

NOTE

This procedure is also applicable to the item in the table below.

REFERENCE TASK

DESCRIPTION	ELIST-TASK CODE	PART NUMBER
Passenger Small Emergency Escape Side Window	01 50 10 02 C	ELC61046

TEST PASSENGER LARGE EMERGENCY ESCAPE SIDE WINDOW GLAZING**NOTE**

Glazing weighs approximately 30 lbs.

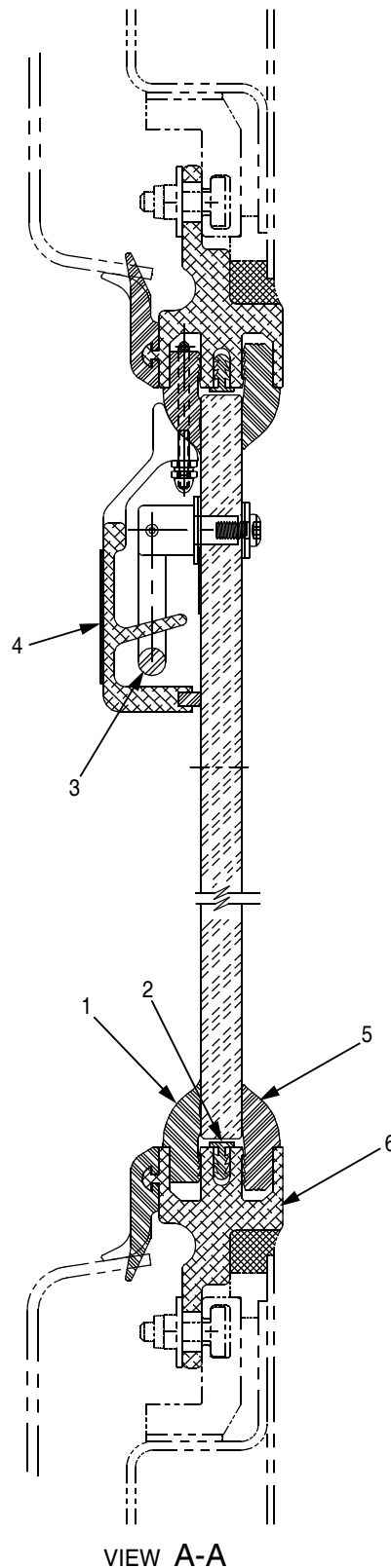
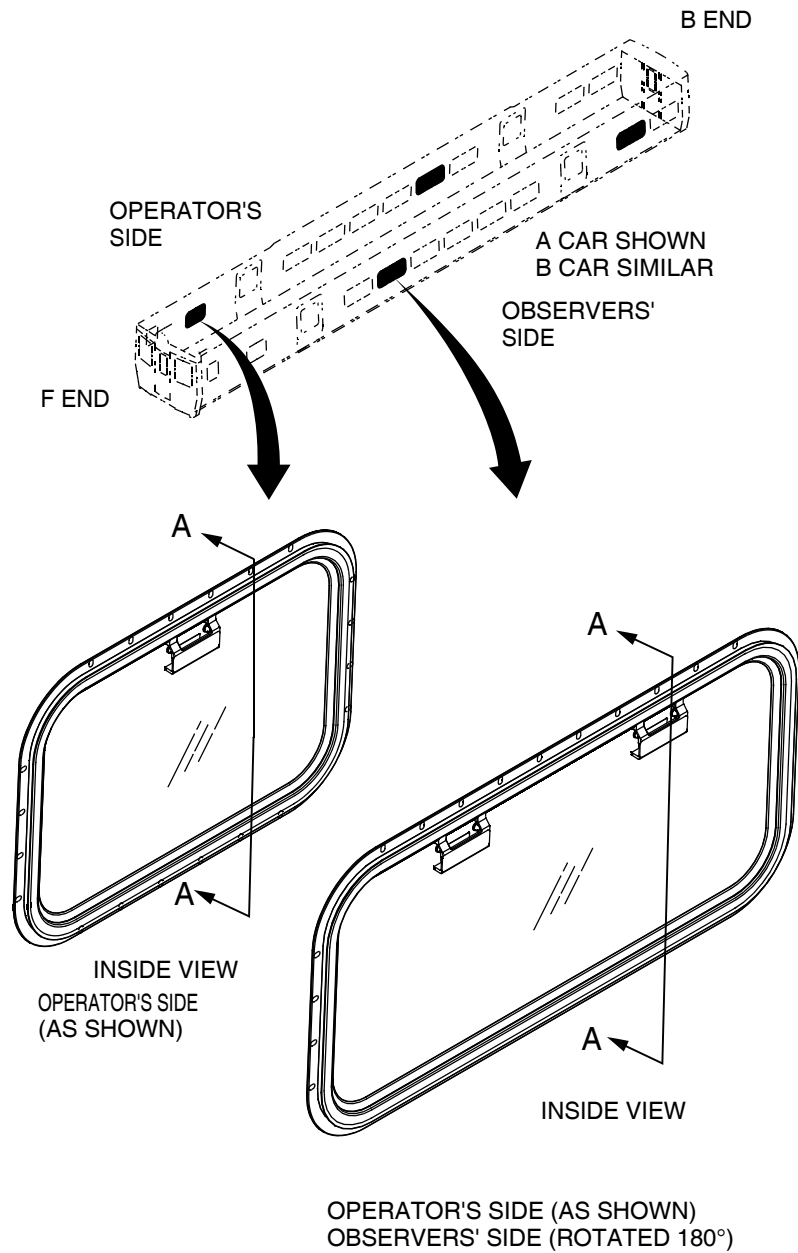
NOTE

The exact number and frequency of emergency escape and rescue access side windows test is determined by the railroad.

NOTE

Exterior testing is unnecessary. Safety personnel attempting an emergency ingress will use tools and safety equipment to aid in the removal of the window.

1. Install the hook of the pull force gauge on the red EMERGENCY EXIT handle (4).
2. Pull on the test gauge at an angle of approximately 45 degrees (with respect to the glazing) until the inner glazing tire (1) is disengaged from the window past the top corners of the window. Record the maximum force required.
3. Disengage the test gauge and continue removing tire (1).
4. Pull the red hinged handle (3) mounted on the glazing inward and carefully remove the glazing assembly from the window frame.
5. Inspect the window frame (6), outer glazing tire (5), and bumper strip (2) for damage, replace as necessary.
6. Inspect the inner glazing tire (1) for damage. Make that the locknuts holding the red EMERGENCY EXIT handle (4) to the rubber glazing tire are secure.
7. Replace the inner glazing tire (1) assembly (01 50 10 01 01 H) if:
 - Pull force exceeds 40 lbs (because of environmental conditions, temperature, rubber aging, sunlight, etc.).
 - Glazing tire tears or is otherwise damaged.



MMM01F249S00A

8. After interior testing reinstall inner glazing tire / handle assembly as follows:

- Position red EMERGENCY EXIT handle (4) attached to inner glazing tire (1) over each red folding handle (3) attached to glazing,
- Seat inner glazing tire (1) into window frame (6),
- Using rubber mallet and plastic chisel as necessary, ensure that inner glazing tire (1) is evenly and fully seated all around window frame (6).

END OF TEST

Follow-On Task(s)

Clean passenger emergency escape and rescue access side window with soapy water.

THIS PAGE INTENTIONALLY LEFT BLANK