

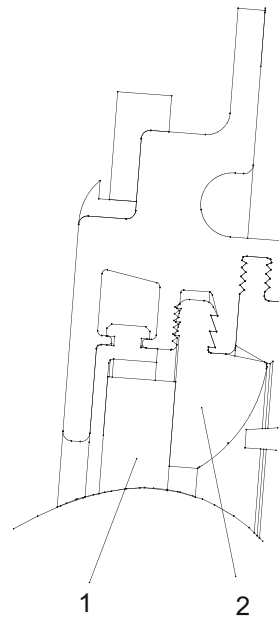
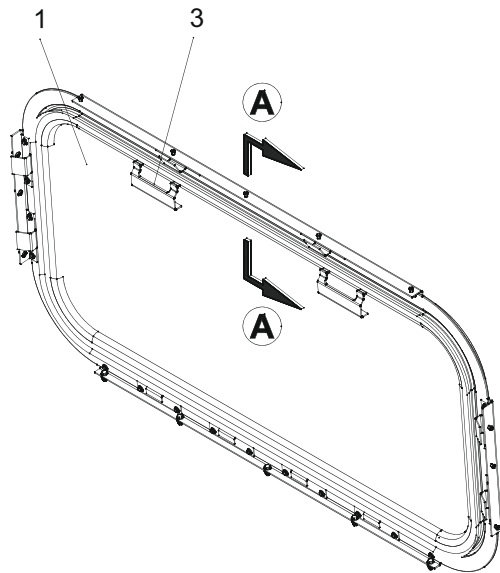
01 50 10 01 A

**INSPECT LARGE PASSENGER SIDE EMERGENCY WINDOW**

**Applicable Car(s):** A Car and B Car

**Equipment Condition**

None.



**SECTION A**

045A-832-014

**Inspect Large Passenger Side Emergency Window**

**NOTE**

If the inspection determines that corrective maintenance is required, report it to your supervisor to ensure that proper corrective action is taken.

1. Visually inspect window glazing (1) for cracks, chips, or other damage.
2. Visually inspect window gasket (2) for cracks, brittleness, or other damage.
3. Visually inspect condition of emergency handle (3) identification markings.

**NOTE**

It is only necessary to remove one emergency window per car during each 92-day inspection. Make sure that a different window is tested at each inspection interval.

4. Remove one emergency window to ensure proper functioning.

- 5. If damage is found, then replace as required, or report it to your supervisor as directed.

**END OF INSPECT**

**Follow-up Task(s)**

None.

**THIS PAGE LEFT BLANK INTENTIONALLY**

**THIS PAGE LEFT BLANK INTENTIONALLY**

01 50 10 01 H

**REPLACE LARGE PASSENGER SIDE EMERGENCY WINDOW**

**Applicable Car(s):** A Car and B Car

**Equipment Condition**

Wheels Chocked

**Activities**

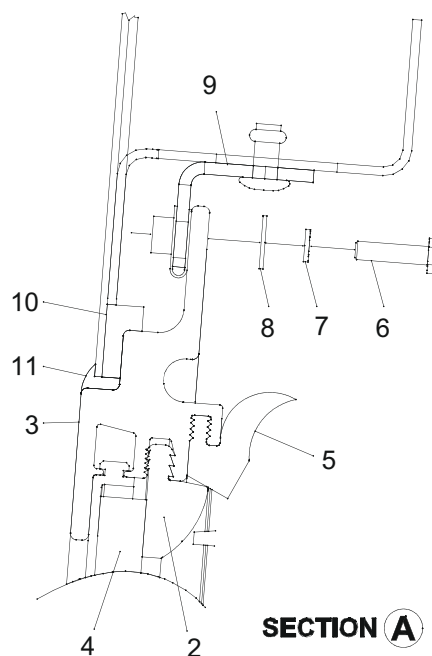
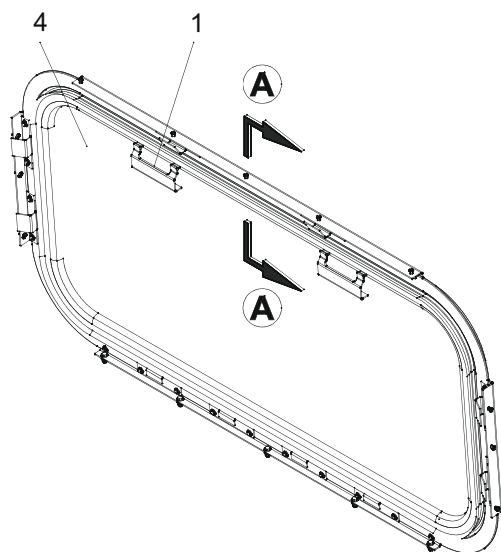
- 1. Remove Large Passenger Side Emergency Window.
- 2. Install Large Passenger Side Emergency Window.

**References**

REPLACE TYPE 1 WINDOW MASK(01 30 20 01 01 H)

**Supplies**

- Large Passenger Side Emergency Window, 04560120174S
- Lockwashers, h/cd spr, sst 18-8, no 10 nom dia x 0.334 in od
- GE 5223 Black Silicone Sealant
- Mineral Spirits
- Torque-Seal
- Soapy Water
- 2-in. Masking Tape



045A-832-019

**Remove Large Passenger Side Emergency Window****NOTE**

Masking tape should be applied to the outer edge of the glass pane. This is to protect it from accidental blows when installing the gaskets with a rubber mallet and wood block.

1. If reusing glass pane (4), apply 2-in. masking tape around outer edge of glass pane.
2. Pull out emergency handles (1) in order to remove rubber gasket (2) from window frame (3).

**NOTE**

Due to the large size of the window pane, two persons should handle window pane during replacement.

3. With help, remove glass pane (4) from window frame (3).

**NOTE**

If the glass pane is the only part requiring maintenance, it is not necessary to proceed any further and remove the window frame.

4. If necessary, remove window frame (3) as follows:
  - a. Remove window mask. (01 30 20 01 01 H)
  - b. Remove window mask gasket (5).
  - c. Remove twenty-eight screws (6), twenty-eight lockwashers (7), and twenty-eight washers (8) fastening window frame (3) to carbody bracketing (9). Discard lockwashers (7).

**NOTE**

Due to the large size of the window frame, two persons should handle frame during replacement.

- d. With help, remove window frame (3) from carbody skin opening.
- e. Remove butyl sealant strip (10) from carbody skin opening.
- f. Remove old silicone sealant (11) from window frame (3) and carbody skin opening with mineral spirits.

**Install Large Passenger Side Emergency Window**

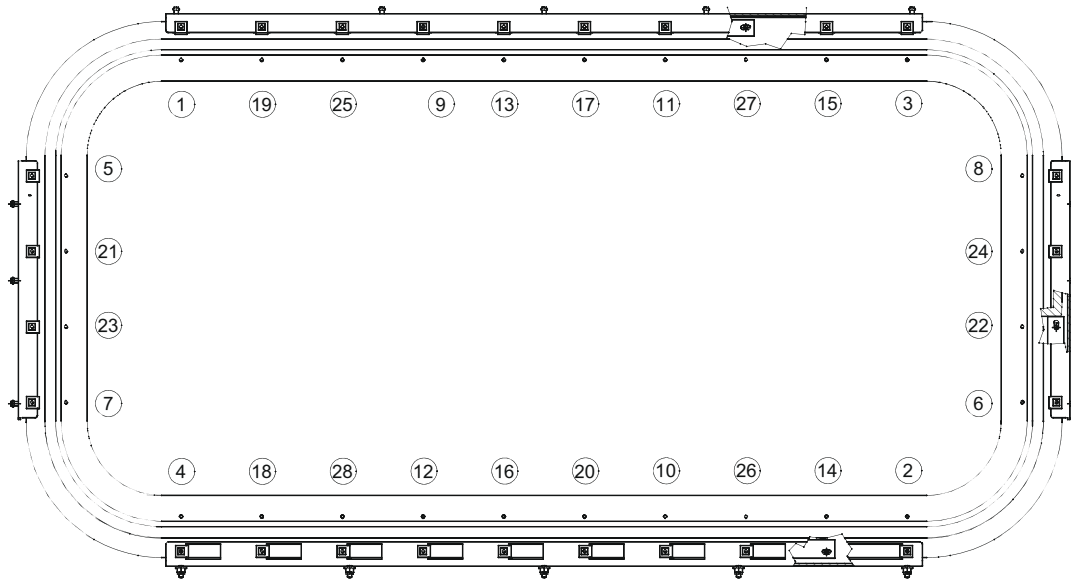
1. If previously removed, install window frame (3) as follows:
  - a. Install butyl sealant strip (10) around carbody skin opening.

**NOTE**

Due to the large size of the window frame, two persons should handle frame during replacement.

- b. With help, position window frame (3) in carbody skin opening.

01 50 10 01 H



TORQUING PATTERN

045A-832-021

**NOTE**

Window frame should be centered horizontally in carbody skin opening.

- c. Fasten window frame (3) to carbody window opening (9) with twenty-eight screws (6), twenty-eight new lockwashers (7), and twenty-eight washers (8). Torque screws to 18 in lb according to torquing pattern and apply Torque-Seal.
  - d. Seal gap between butyl strip (10) and carbody skin opening (9) with silicone sealant (11).
  - e. Install window mask. (01 30 20 01 01 H)
  - f. Apply 2-in. masking tape on window mask gasket (5) to protect it from hammer strikes.
  - g. Gently tap window mask gasket (5) in place using a piece of wood and a mallet.
2. Inspect window gasket (2) for signs of fraying. Replace if necessary.

**NOTE**

Due to the large size of the window pane, two persons should handle window pane during replacement.

3. With help, insert window (4) in window frame (3).

**NOTE**

Masking tape should be applied to the outer edge of the glass pane. This is to protect it from accidental blows when installing the gaskets with a rubber mallet and wood block.

4. Apply 2-in. masking tape on glass pane (4) to protect it from mallet strikes.
5. Lubricate foot of gasket (2) with soapy water to ease mounting in window frame (3) channel.

**NOTE**

The emergency handles on rubber gasket should be equally distanced from centerline on top edge of window.

6. Gently tap rubber gasket in window frame (3) channel using a piece of wood and mallet.
7. Verify if rubber gasket (2) is seated completely and that emergency handles (1) are correctly positioned.

**END OF REPLACE****Follow-up Task(s)**

None.



**THIS PAGE LEFT BLANK INTENTIONALLY**

**THIS PAGE LEFT BLANK INTENTIONALLY**

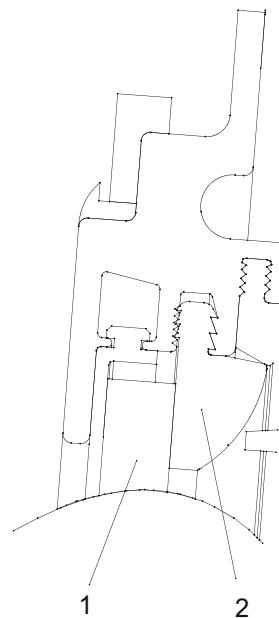
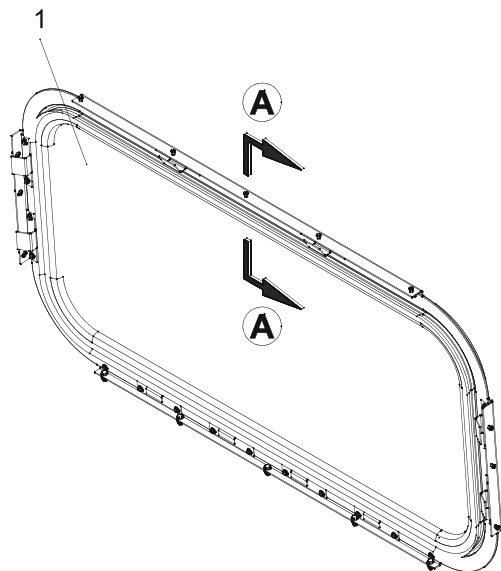
01 50 20 01 A

**INSPECT LARGE PASSENGER SIDE FIXED WINDOW**

**Applicable Car(s):** A Car and B Car

**Equipment Condition**

None.



045A-832-015

**SECTION A**

**Inspect Large Passenger Side Fixed Window**

**NOTE**

If the inspection determines that corrective maintenance is required, report it to your supervisor to ensure that proper corrective action is taken.

1. Visually inspect window glazing (1) for cracks, chips, or other damage.
2. Visually inspect window gasket (2) for cracks, brittleness, or other damage.
3. If damage is found, then replace as required, or report it to your supervisor as directed.

**END OF INSPECT**

**Follow-up Task(s)**

None.

**THIS PAGE LEFT BLANK INTENTIONALLY**

01 50 20 01 H

**REPLACE LARGE PASSENGER SIDE FIXED WINDOW**

**Applicable Car(s):** A Car and B Car

**Equipment Condition**

Wheels Chocked

**Activities**

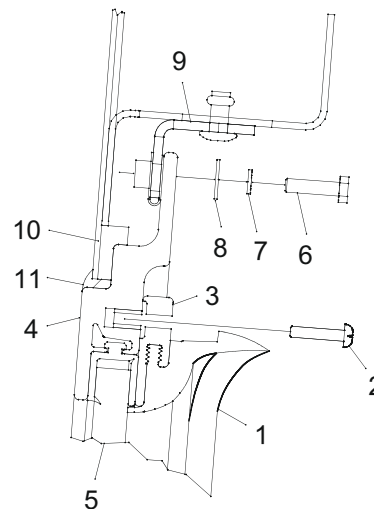
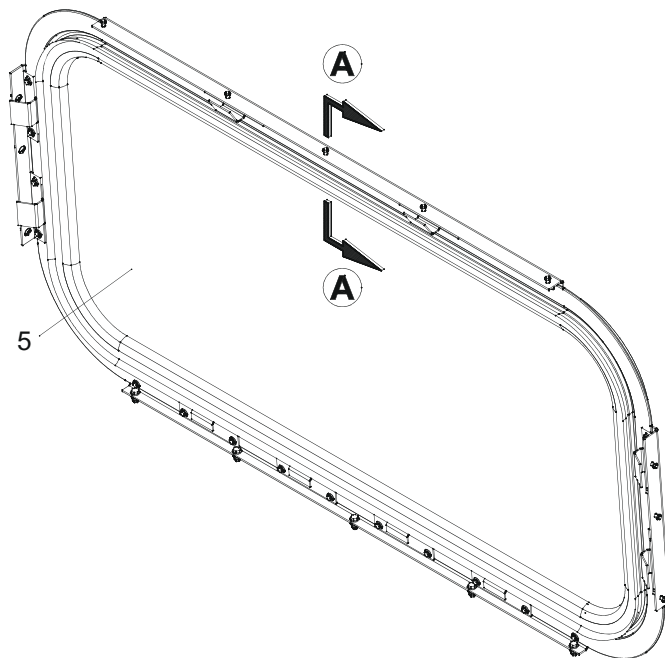
1. Remove Large Passenger Side Fixed Window.
2. Install Large Passenger Side Fixed Window.

**References**

REPLACE TYPE 1 WINDOW MASK(01 30 20 01 01 H)

**Supplies**

- Large Passenger Side Fixed Window, 04560120174S
- Lockwashers, hchl spr, sst 18-8, no 10 nom dia x 0.334 in od
- GE 5223 Black Silicone Sealant
- Mineral Spirits
- Torque-Seal
- 2-in. Masking Tape
- Soapy Water



**SECTION A**

045A-832-018

**Remove Large Passenger Side Fixed Window****NOTE**

Masking tape should be applied to the outer edge of the glass pane. This is to protect it from accidental blows when installing the gaskets with a rubber mallet and wood block.

1. If reusing glass pane (5), apply 2-in. masking tape around outer edge of glass pane.
2. Remove window mask gasket (1) to access screw (2) heads.
3. Remove twenty-eight screws (2) fastening compression ring (3) to window frame (4).
4. Remove compression ring (3).
5. Position two suction cup handles on glass pane (5).

**NOTE**

Due to the large size of the window pane, two persons should handle window pane during replacement.

6. With help, remove glass pane (5) from window frame (4).

**NOTE**

If the glass pane is the only part requiring maintenance, it is not necessary to proceed any further and remove the window frame.

7. If necessary, remove window frame (4) as follows:
  - a. Remove adjacent window mask. (01 30 20 01 01 H)
  - b. Remove twenty-eight screws (6), twenty-eight lockwashers (7), and twenty-eight washers (8) fastening window frame (4) to carbody bracketing (9). Discard lockwashers.

**NOTE**

Due to the large size of the window frame, two persons should handle frame during replacement.

- c. With help, remove window frame (4) from carbody bracketing (9).
- d. Remove butyl sealant strip (10) from carbody skin opening.
- e. Remove old silicone sealant (11) from window frame (4) and carbody skin opening with mineral spirits.

**Install Large Passenger Side Fixed Window**

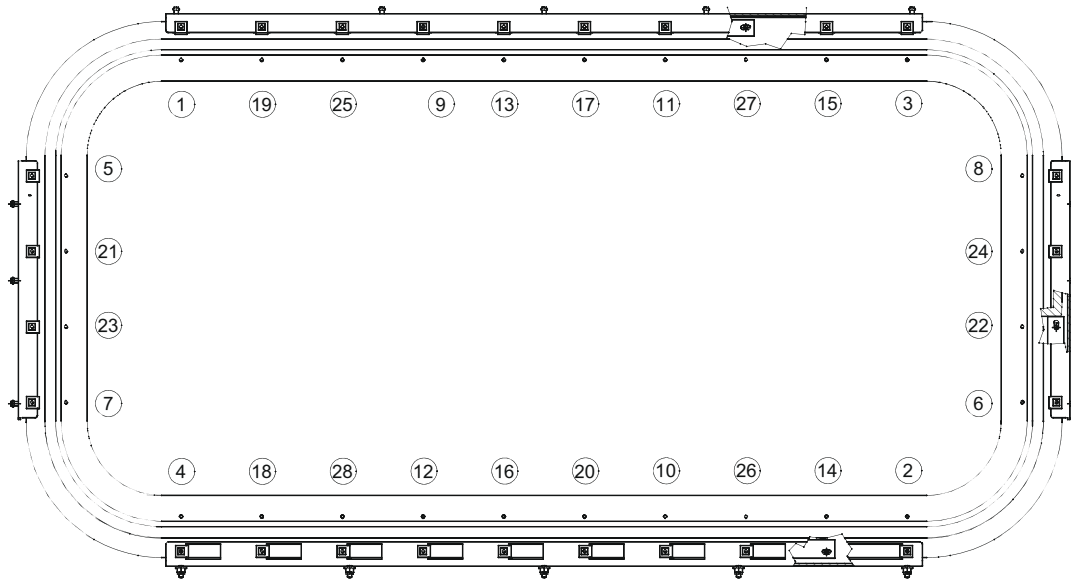
1. If previously removed, install window frame (4) as follows:
  - a. Install butyl sealant strip (10) around carbody skin opening.

**NOTE**

Due to the large size of the window frame, two persons should handle frame during replacement.

- b. With help, position window frame (4) on carbody bracketing (9).

01 50 20 01 H



TORQUING PATTERN

045A-832-021

**NOTE**

Window frame should be centered horizontally in carbody skin opening.

- c. Fasten window frame (4) to carbody bracketing (9) with twenty-eight screws (6), twenty-eight new lockwashers (7), and twenty-eight washers (8). Torque screws to 18 in. lb according to torquing pattern and apply Torque-Seal.
- d. Seal gap between butyl strip (10) and carbody skin opening with silicone sealant (11).
- e. Install adjacent window mask. (01 30 20 01 01 H)
2. Apply soapy water to glass pane (5) gasket, located in window frame (4).
3. Position two suction cup handles on window pane (5).

**NOTE**

Due to the large size of the window pane, two persons should handle window pane during replacement.

4. With help, insert glass pane (5) in frame (4).
5. Install compression ring (3) on window frame (4).

**NOTE**

No Torque-Seal is applied to the compression ring screws as it would get smudged when installing the window mask gasket.

6. Fasten compression ring (3) to window frame (4) with twenty-eight screws (2). Torque screws to 18 in lb according to torquing pattern.

**NOTE**

Masking tape should be applied to the outer edge of the glass pane. This is to protect it from accidental blows when installing the gaskets with a rubber mallet and wood block.

7. Apply 2-in. masking tape on glass pane (5) to protect it from mallet strikes.
8. Apply soapy water to window mask gasket (1).
9. Gently tap window mask gasket (1) in place using a piece of wood and a mallet.

**END OF REPLACE**

**Follow-up Task(s)**

None.



**THIS PAGE LEFT BLANK INTENTIONALLY**

**THIS PAGE LEFT BLANK INTENTIONALLY**

01 50 20 03 H

**REPLACE SMALL PASSENGER SIDE FIXED WINDOW**

**Applicable Car(s):** A Car and B Car

**Equipment Condition**

Wheels Chocked

**Activities**

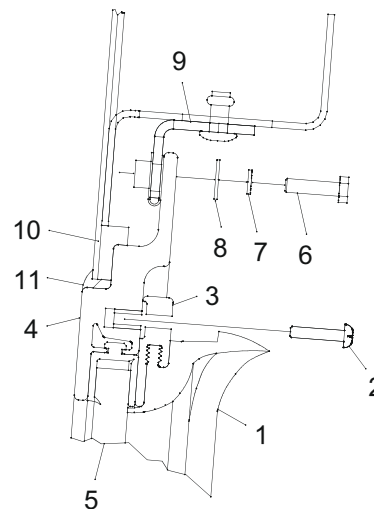
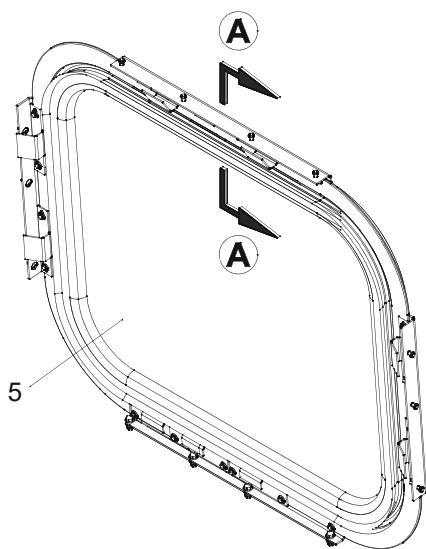
1. Remove Small Passenger Side Fixed Window.
2. Install Small Passenger Side Fixed Window.

**References**

REPLACE TYPE 1 WINDOW MASK(01 30 20 01 01 H)

**Supplies**

- Small Passenger Side Fixed Window, , 04560120173S
- Lockwashers, hld spr, sst 18-8, no. 10 nom dia x 0.334 in. od
- GE 5223 Black Silicone Sealant
- Mineral Spirits
- Torque-Seal
- 2-in. Masking Tape
- Soapy Water



**SECTION A**

045A-832-020

**Remove Small Passenger Side Fixed Window****NOTE**

Masking tape should be applied to the outer edge of the glass pane. This is to protect it from accidental blows when installing the gaskets with a rubber mallet and wood block.

1. If reusing glass pane (5), apply 2 in. masking tape around outer edge of glass pane (5).
2. Remove window mask gasket (1) to access screw (2) heads.
3. Remove twenty screws (2) fastening compression ring (3) to window frame (4).
4. Remove compression ring (3).
5. Position two suction cup handles on window pane (5).

**NOTE**

Due to the large size of the window pane, two persons should handle window pane during replacement.

6. With help, remove glass pane (5) from window frame (4).

**NOTE**

If the glass pane is the only part requiring maintenance, it is not necessary proceed any further and remove the window frame.

7. If necessary, remove window frame (4) as follows:
  - a. Remove adjacent window mask. (01 30 20 01 01 H)
  - b. Remove twenty screws (6), twenty lockwashers (7), and twenty washers (8) fastening window frame (4) to carbody bracketing (9). Discard lockwashers.

**NOTE**

Due to the large size of the window frame, two persons should handle frame during replacement.

- c. With help, remove window frame (4) from carbody bracketing (9).
- d. Remove butyl sealant strip (10) from carbody skin opening.
- e. Remove old silicone sealant (11) from window frame (4) and carbody skin opening with mineral spirits.

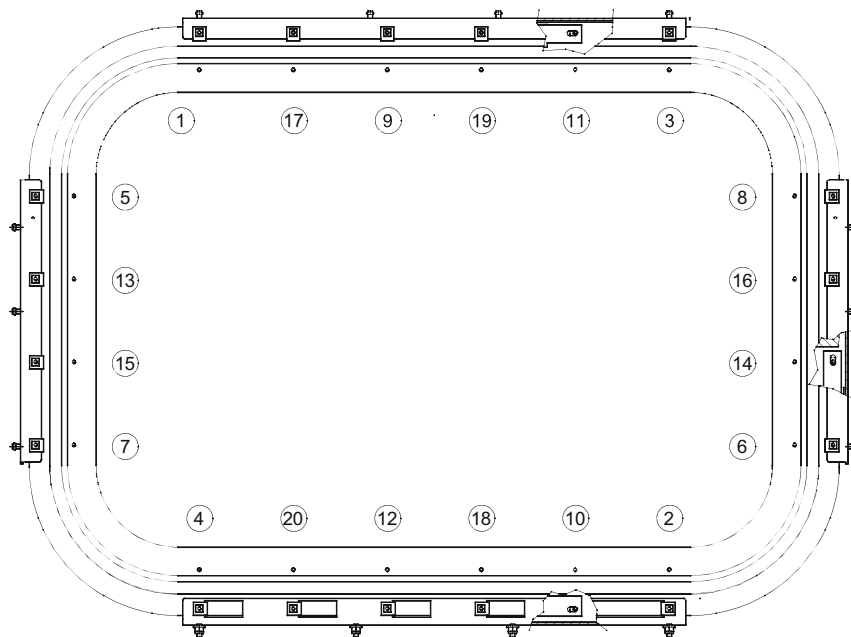
**Install Small Passenger Side Fixed Window**

1. If previously removed, install window frame (4) as follows:
  - a. Install butyl sealant strip (10) around carbody skin opening.

**NOTE**

Due to the large size of the window frame, two persons should handle frame during replacement.

- b. With help, position window frame (4) on carbody bracketing (9).



TORQUING PATTERN

045A-832-022

**NOTE**

Window frame should be centered horizontally in carbody skin opening.

- c. Fasten window frame (4) to carbody bracketing (9) with twenty screws (6), twenty new lockwashers (7), and twenty washers (8). Torque screws to 18 in. lb according to torquing pattern and apply Torque-Seal.
  - d. Seal gap between butyl strip (10) and carbody skin opening with silicone sealant (11).
  - e. Install adjacent window mask. (01 30 20 01 01 H)
2. Apply soapy water to glass pane (5) gasket, located in window frame (4).

**NOTE**

Due to the large size of the window pane, two persons should handle window pane during replacement.

- 3. With help, insert glass pane (5) in frame (4).
- 4. Install compression ring (3) on window frame (4).

**NOTE**

No Torque-Seal is applied to the compression ring screws as it would get smudged when installing the window mask gasket.

5. Fasten compression ring (3) to window frame (4) with twenty screws (2). Torque screws to 18 in lb according to torquing pattern.

**NOTE**

Masking tape should be applied to the outer edge of the glass pane. This is to protect it from accidental blows when installing the gaskets with a rubber mallet and wood block.

6. Apply 2-in. masking tape on glass pane (5) to protect it from mallet strikes.
7. Apply soapy water to window mask gasket (1).
8. Gently tap window mask gasket (1) in place using a piece of wood and a mallet.

**END OF REPLACE**

**Follow-up Task(s)**

None.

**THIS PAGE LEFT BLANK INTENTIONALLY**

**THIS PAGE LEFT BLANK INTENTIONALLY**



01 50 30 01 H

**REPLACE CAB SIDE WINDSHIELD WITH HEATER - RIGHT**

**Applicable Car(s):** A Car and B Car

**Equipment Condition**

CB84 Open.

Wheels Chocked

**Activities**

1. Remove Cab Side Windshield.
2. Install Cab Side Windshield.

**Supplies**

Windshield, 04560120169S

Lockwashers, hlcl spr, sst 18-8, no. 10 nom dia x 0.334 in. od

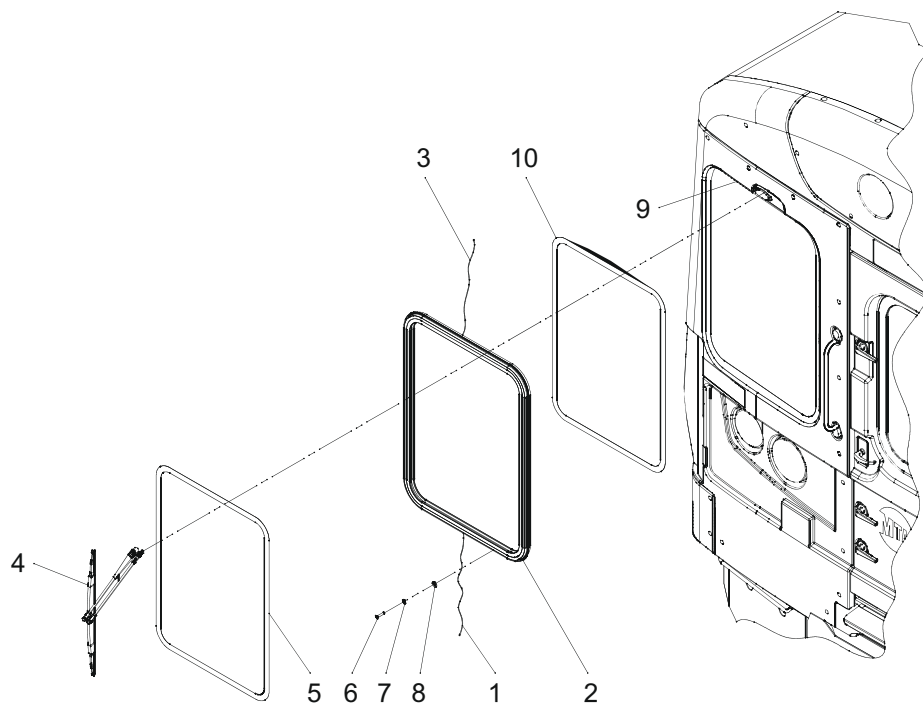
Butyl Tape, 0.150 in. thk x 0.500 in. wide

Loctite 410 Adhesive

Loctite 242

Soapy Water

String



045A-832-006

**Remove Cab Side Windshield****CAUTION**

**Windshield heater is electrically powered. Ensure that appropriate circuit breaker is open before replacing windshield. Failure to do so may result in injury or death.**

1. Ensure that CB84 is open.

**NOTE**

The cab control panel is located in the cab, below the windshield.

2. Open cab control panel by removing six screws.

**NOTE**

The wires used for the windshield heater are black AWG 22, and they are 48 in. long.

3. Disconnect windshield heater defrost wire (1) from terminal board below windshield (2).

**NOTE**

The wiper access panel is located in the cab, above the windshield.

4. Open wiper access panel by unscrewing two captive screws.
5. Disconnect windshield heater sensor wire (3) from terminal board above windshield (2).

**NOTE**

A four foot long piece of string needs to be attached to each heater wire before removing the windshield. The strings are used to feed the heater wires of the new windshield through the conduits during installation.

6. Attach strings to ends of windshield heater wires (1) and (3).
7. Access windshield assembly (2) from exterior of car.
8. Remove wiper arm (4).
9. Using screwdriver, carefully pry out concealment strip (5).
10. Position two suction cup handles on windshield (2).

**CAUTION**

**Windshield weighs 75 lb. Two persons are required to replace windshield. Failure to obtain help may result in injury or damage to equipment.**

**NOTE**

Screws need to be removed in a radial pattern to avoid stressing windshield and frame.

11. With help supporting windshield assembly (2), remove twenty screws (6), twenty lockwashers (7), and twenty washers (8) fastening windshield assembly (3) to carbody (9). Discard lockwashers (7).

01 50 30 01 H

**NOTE**

Windshield includes a heater wire that is connected to a terminal box. Care must be taken not to stretch wire when removing windshield.

12. With help, move windshield assembly (2) a few inches away from carbody (9).
13. Pull on windshield heater wires (1) and (3) to feed strings through conduits.
14. Detach strings from windshield heater wires (1) and (3). Leave strings in place.
15. With help, remove windshield assembly (3).

**Install Cab Side Windshield**

1. Inspect condition of butyl tape (10). Replace if damaged.
2. Ensure that windshield assembly (2) frame is clean.
3. Position two suction cup handles on windshield assembly (2).

**CAUTION**

**Windshield weighs 75 lb. Two persons are required to replace windshield. Failure to obtain help may result in injury or damage to equipment.**

4. With help, position windshield assembly (2) near carbody (9).
5. Attach windshield heater wires (1) and (3) to strings in conduits.
6. Carefully feed windshield heater wires (1) and (3) through conduits by pulling on strings from inside cab.
7. With help, place windshield assembly (2) on carbody (9).

**NOTE**

Screws need to be gradually torqued in a radial pattern to avoid stressing windshield and frame.

8. Fasten windshield assembly (2) to carbody (9) with twenty screws (6), twenty new lockwashers (7), twenty washers (8), and loctite 242. Gradually torque screws (6) to 18 in. lb following a radial pattern.
9. If necessary, glue ends of concealment strip (5) together with Loctite 410 adhesive.
10. Apply soapy water to concealment strip (5).
11. Using soft hammer, tap concealment strip (5) into windshield assembly (2) frame groove.

**NOTE**

The wiper arm needs to be installed so that the wiper blade is parked 1 3/4 in. from the edge of the windshield seal.

12. Install wiper arm (4).
13. Detach strings from windshield heater wires (1) and (3). Discard strings.
14. Attach windshield heater sensor wire (1) to terminal board above windshield (2).
15. Attach windshield heater defrost wire (3) to terminal board below windshield (2).

- 16. Close CB84.

**END OF REPLACE**

**Follow-up Task(s)**

None.

**THIS PAGE LEFT BLANK INTENTIONALLY**

**THIS PAGE LEFT BLANK INTENTIONALLY**