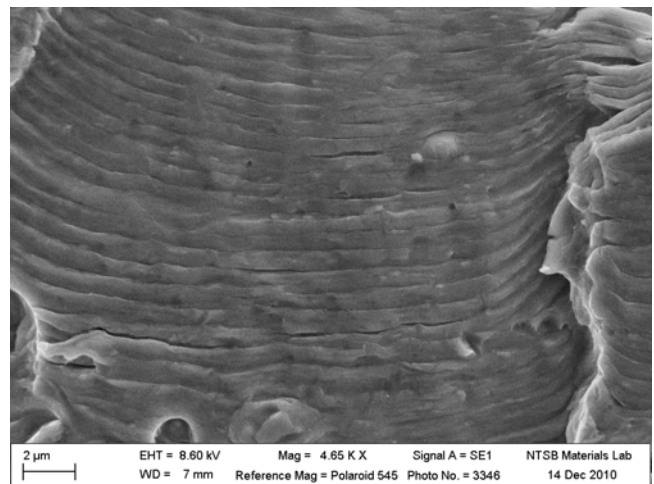
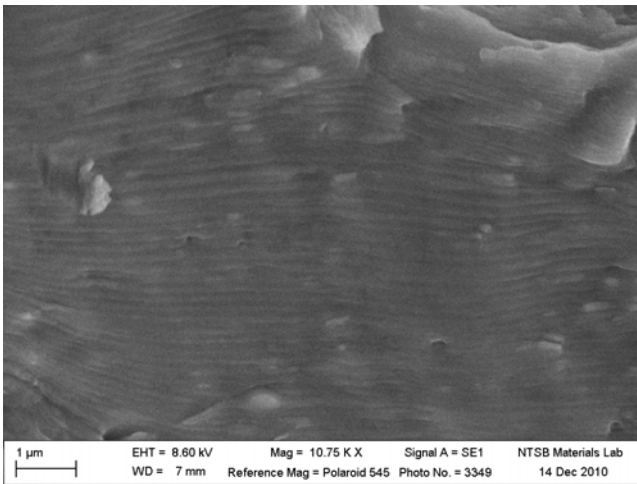
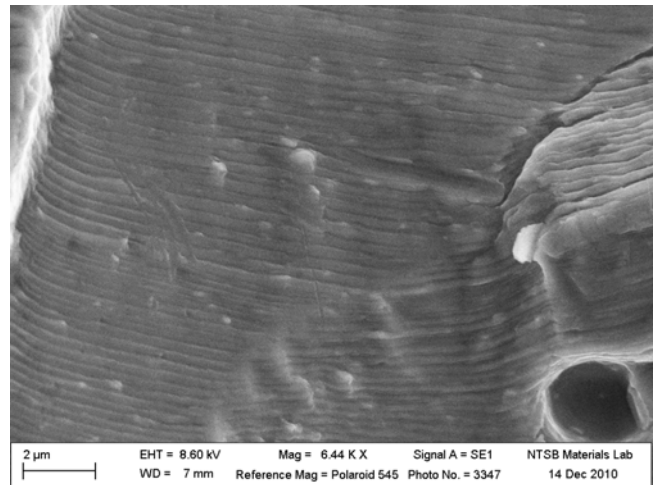
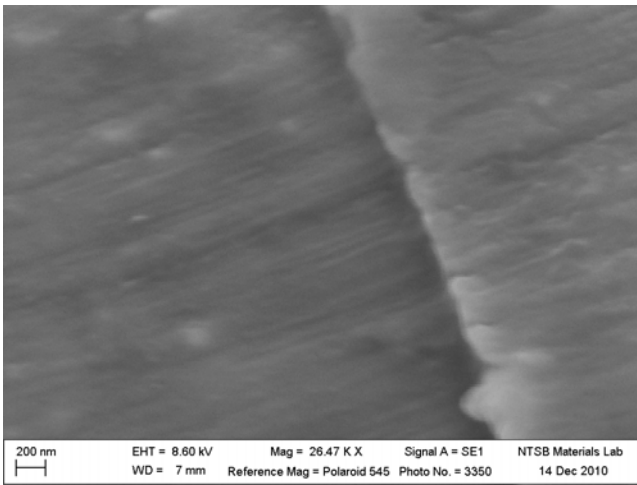
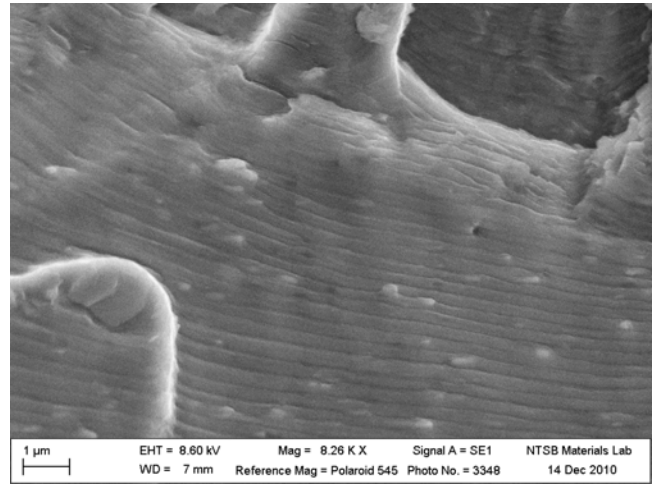
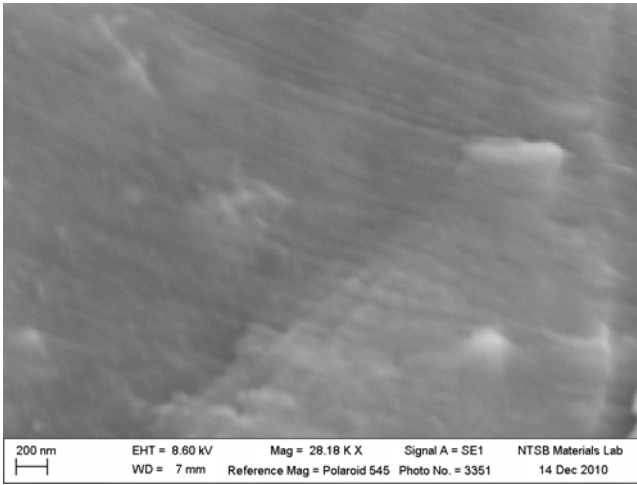
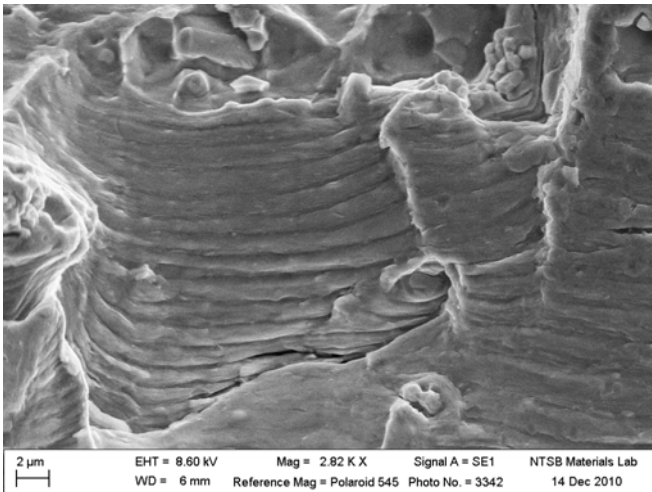
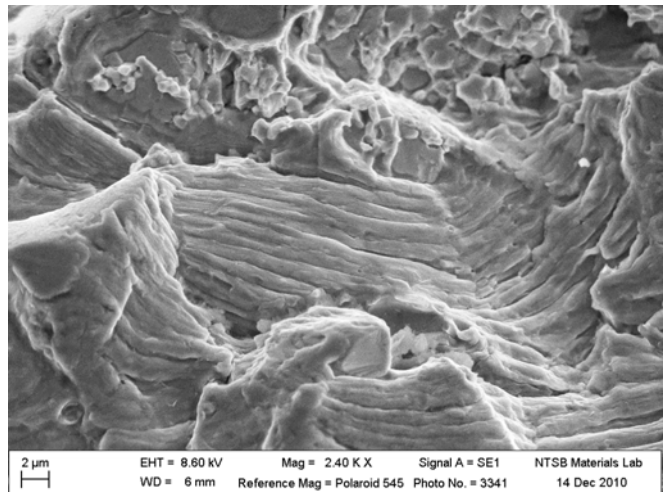
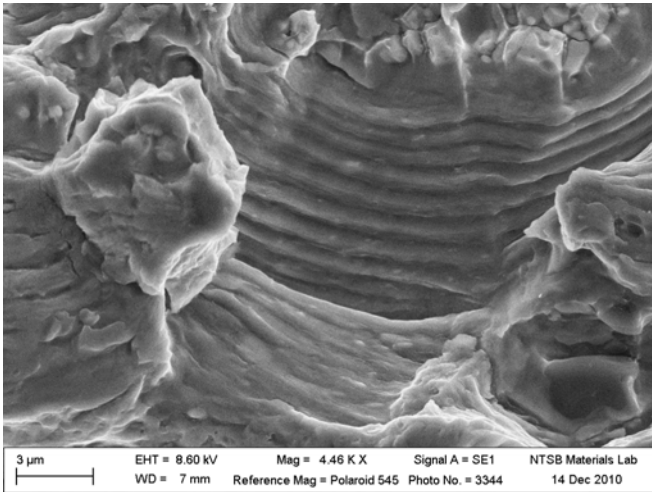
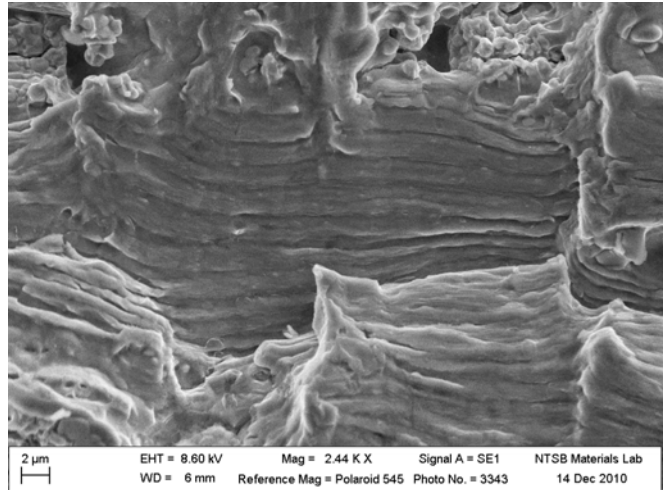
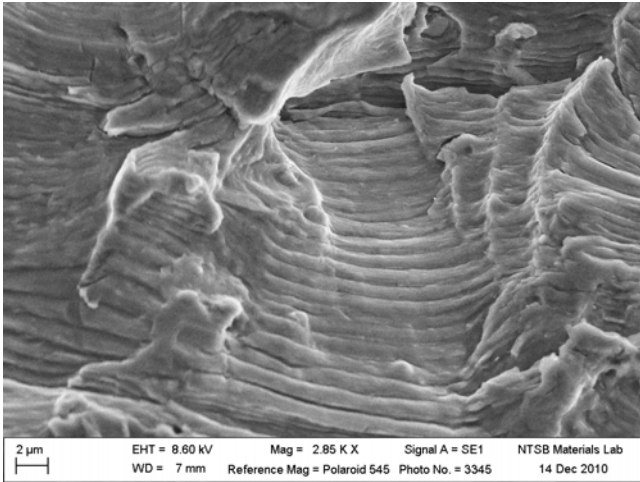
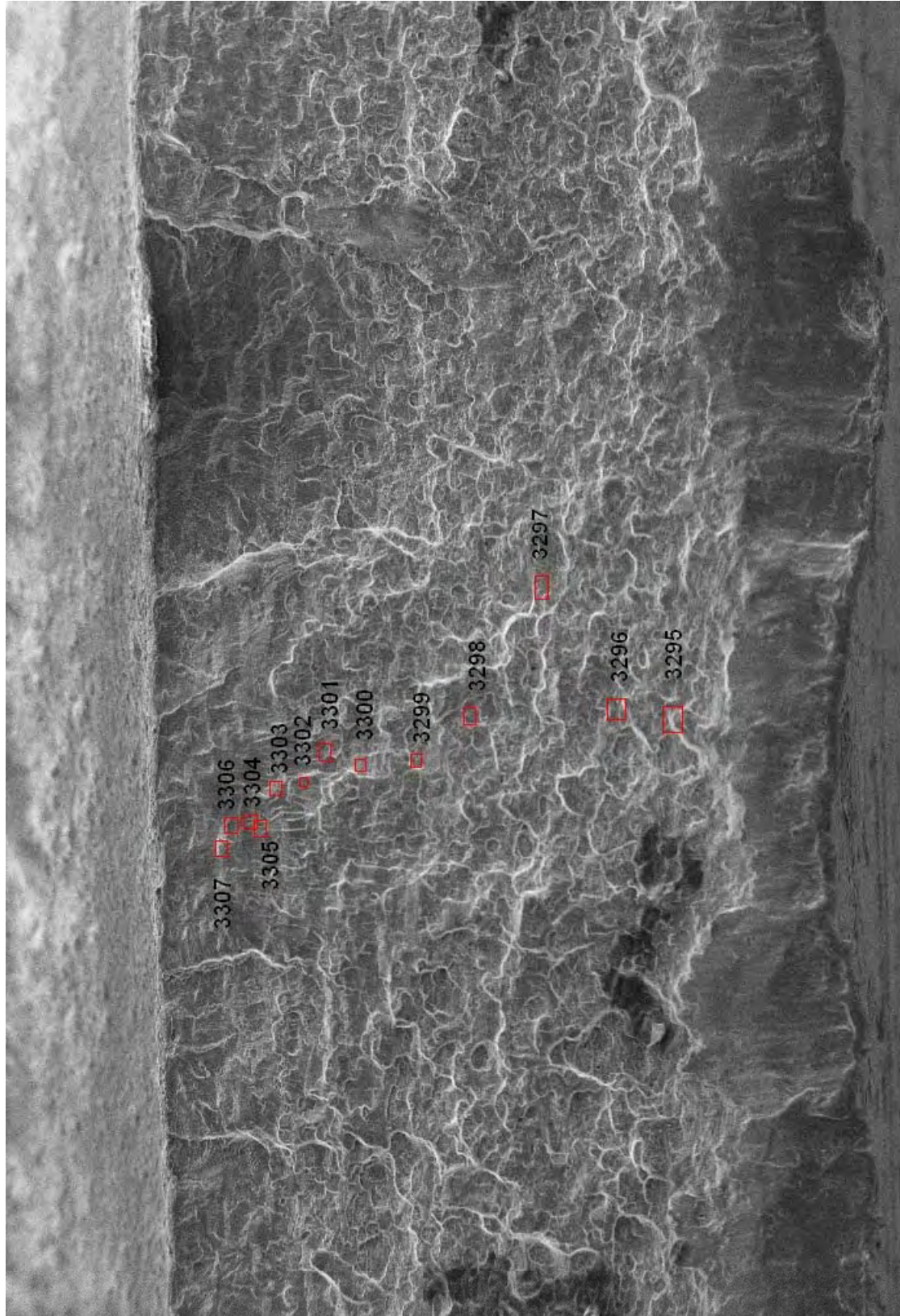


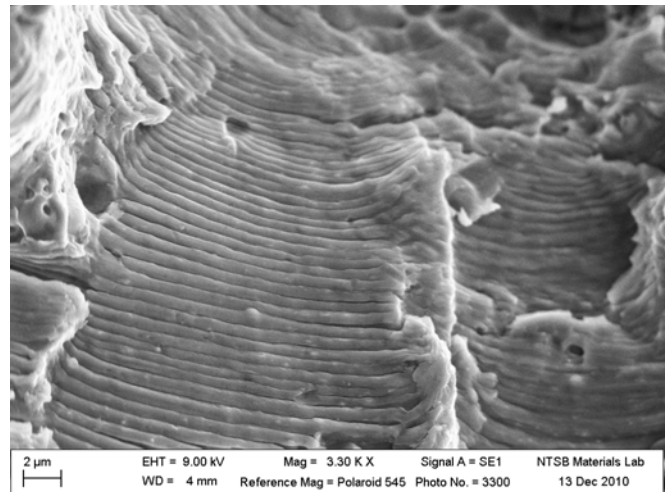
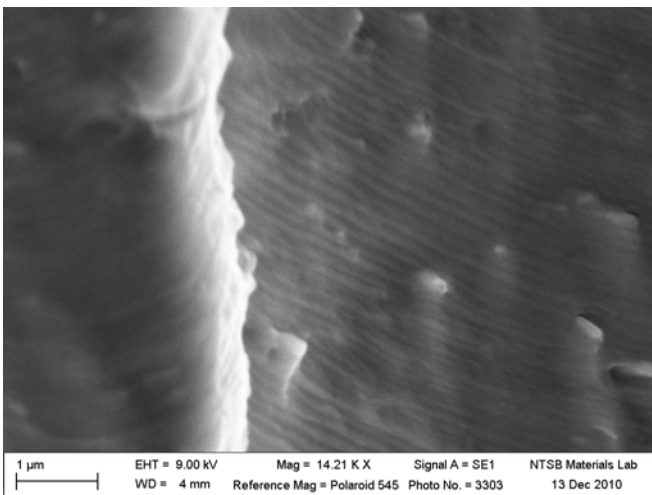
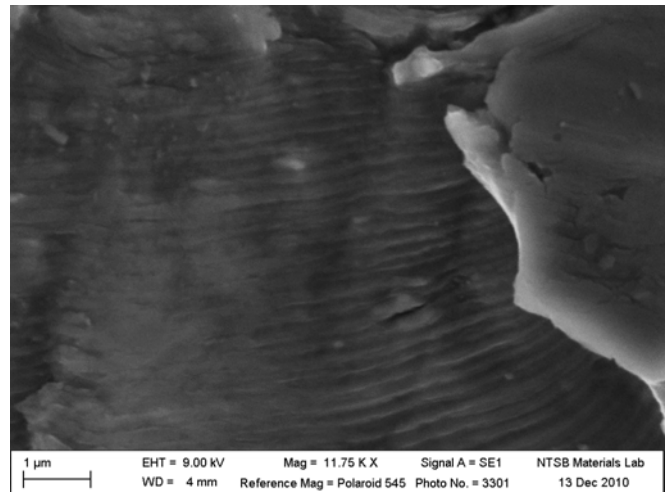
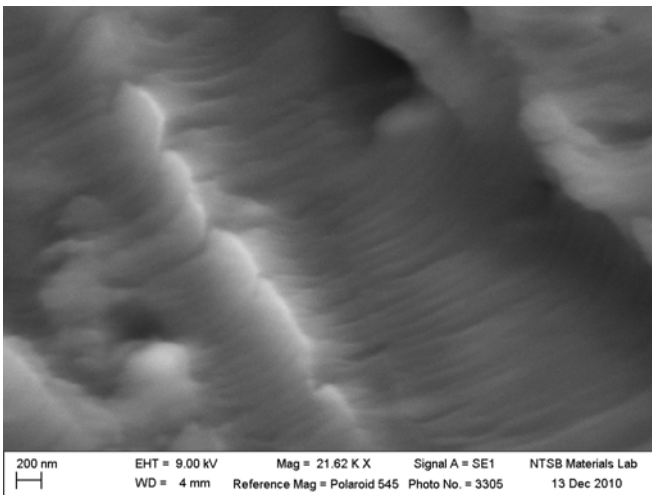
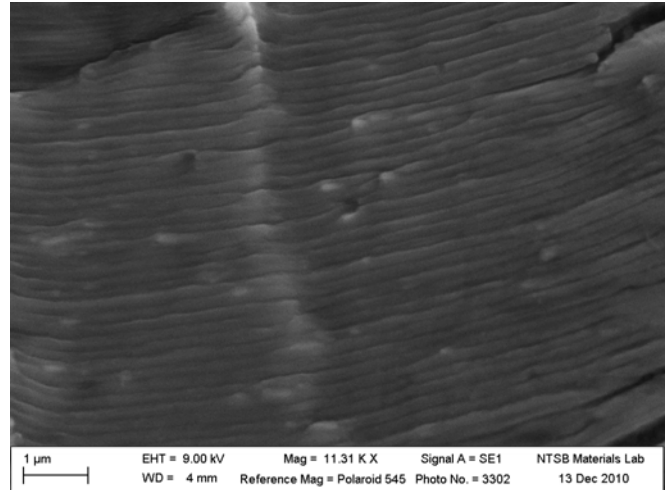
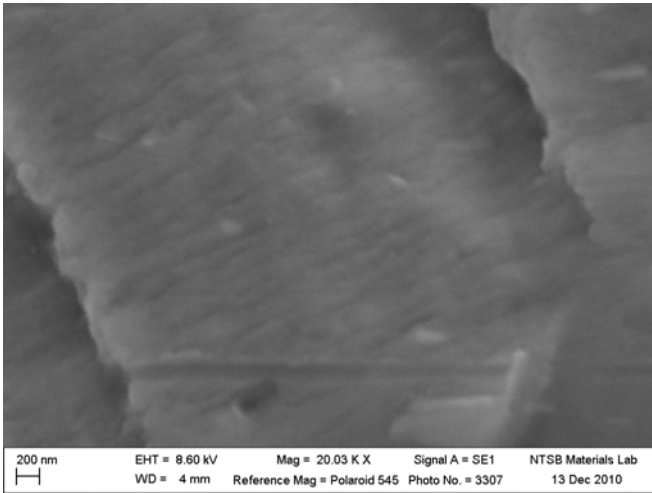
100 μm |
EHT = 8.60 kV Mag = 75 X Signal A = SE1 NTSB Materials Lab
WD = 6 mm Reference Mag = Polaroid 545 Photo No. = 3340 14 Dec 2010

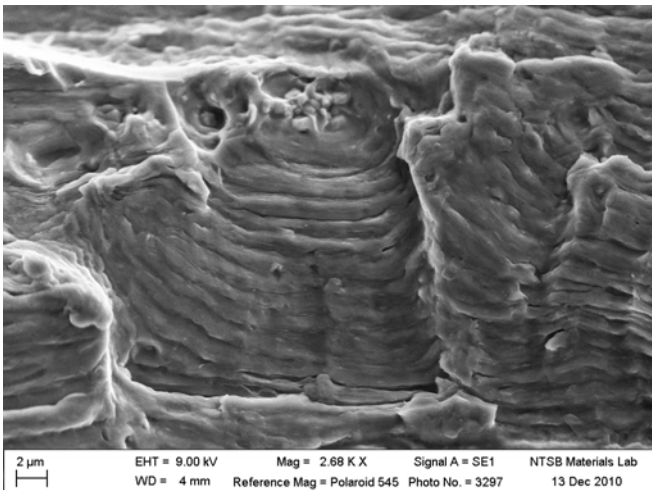
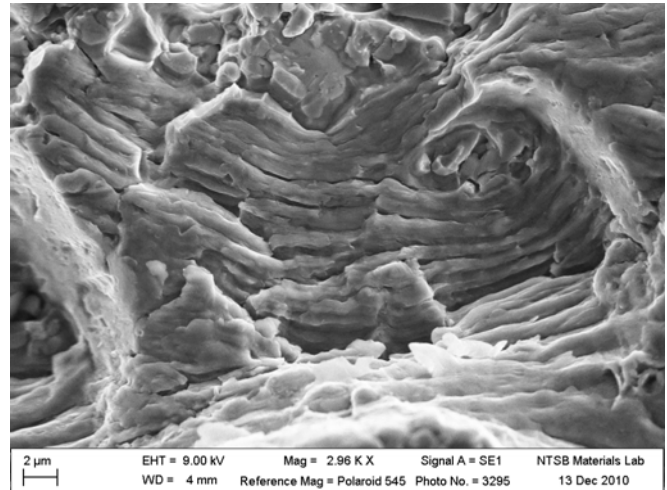
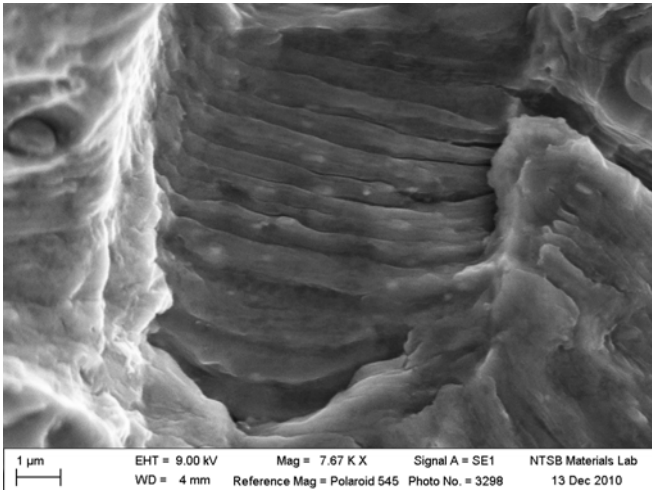
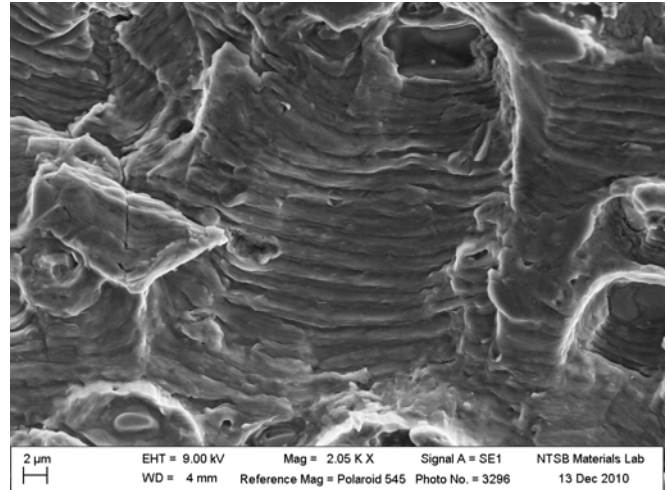
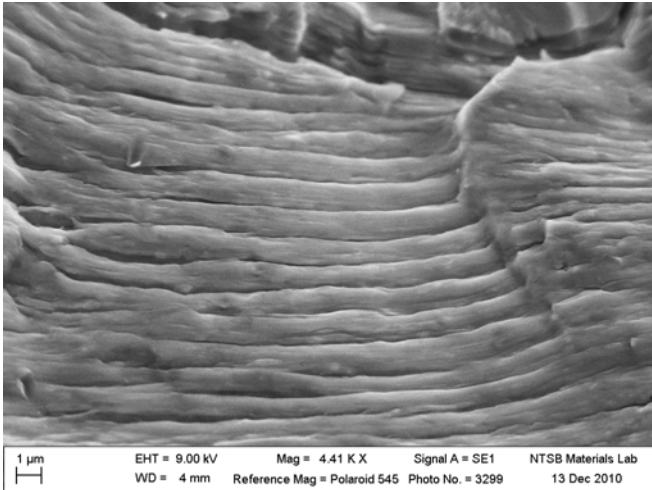


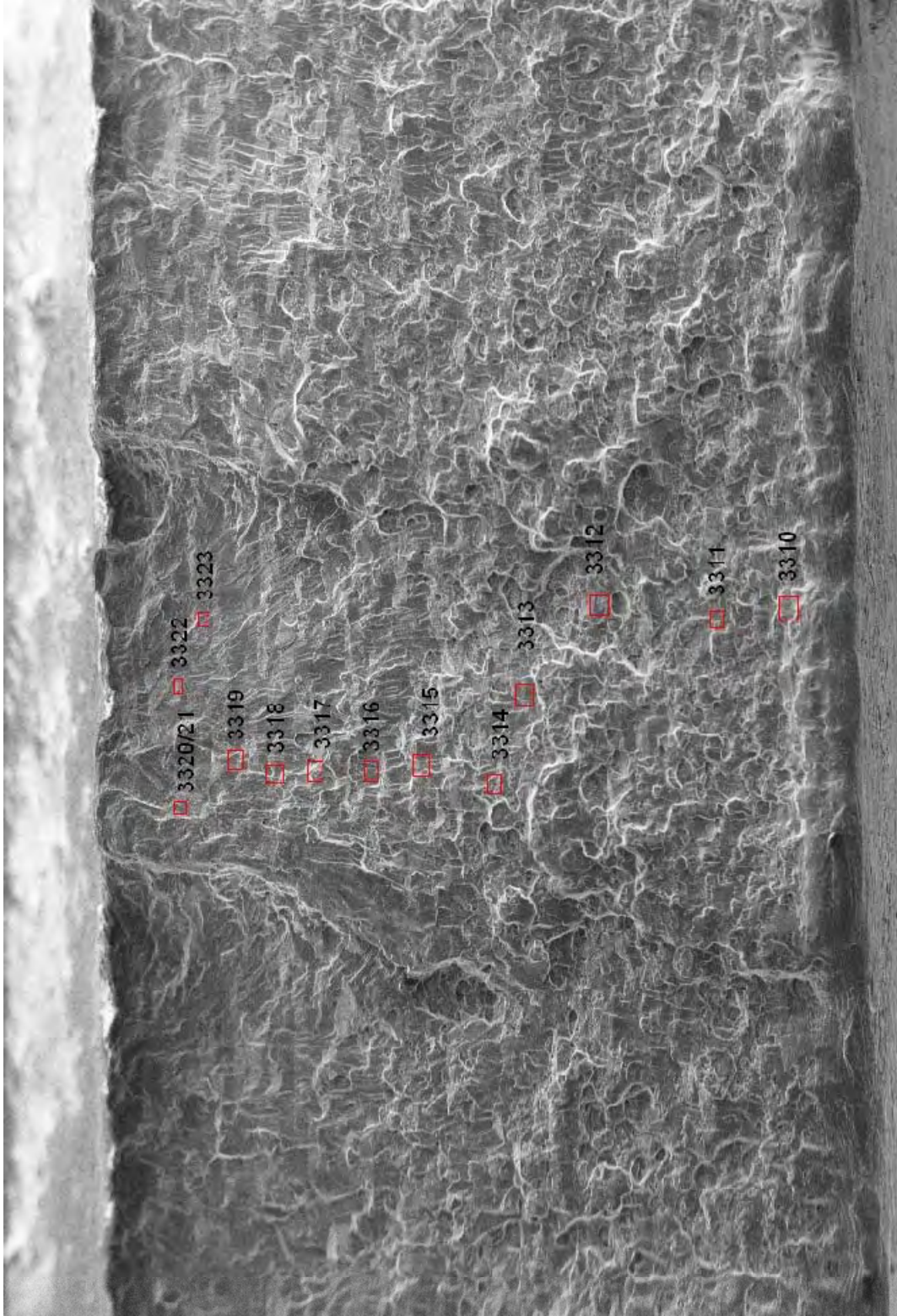




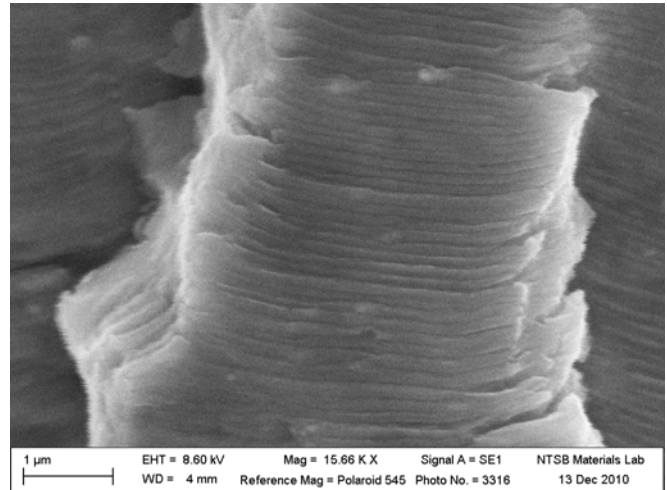
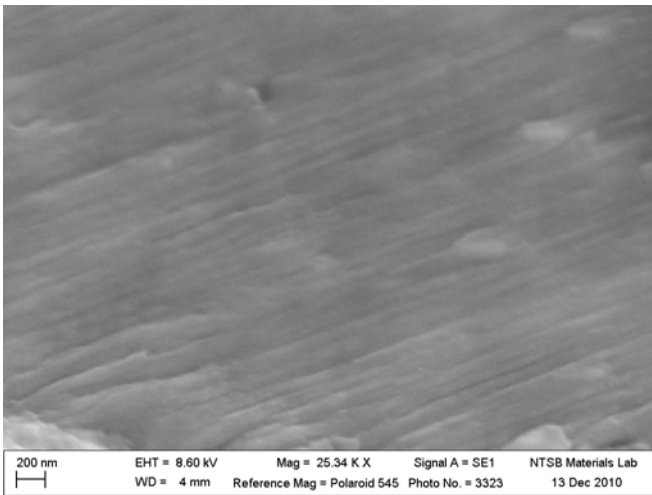
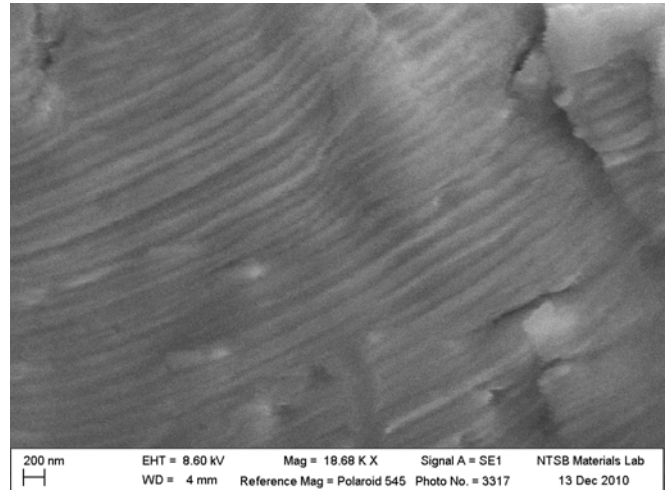
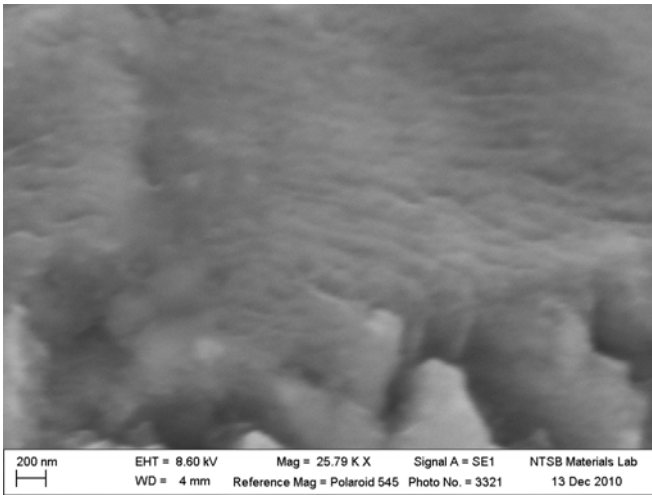
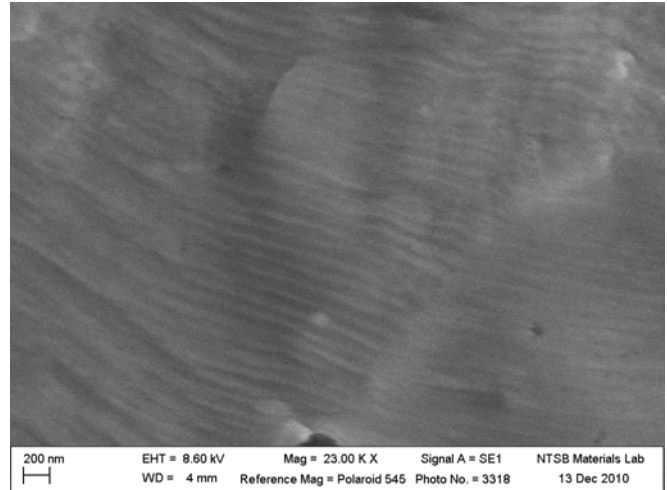
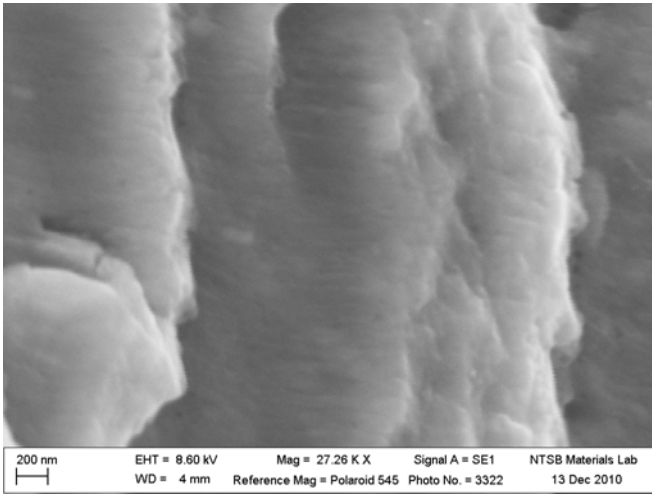
100 μ m EHT = 9.00 kV Mag = 68 X Signal A = SE1 NTSB Materials Lab
WD = 7 mm Reference Mag = Polaroid 545 Photo No. = 3290 13 Dec 2010

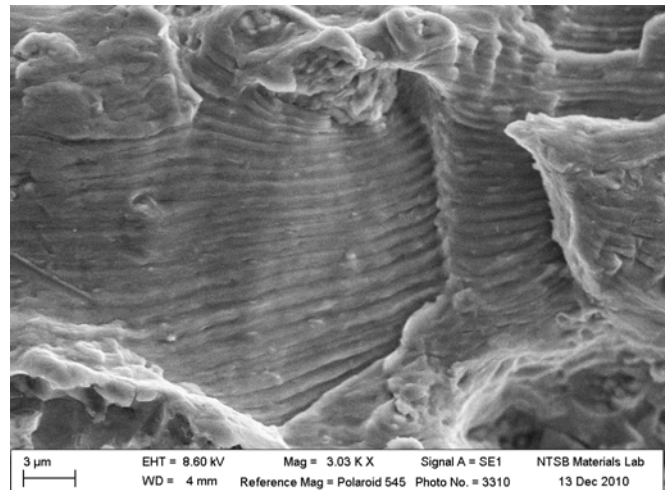
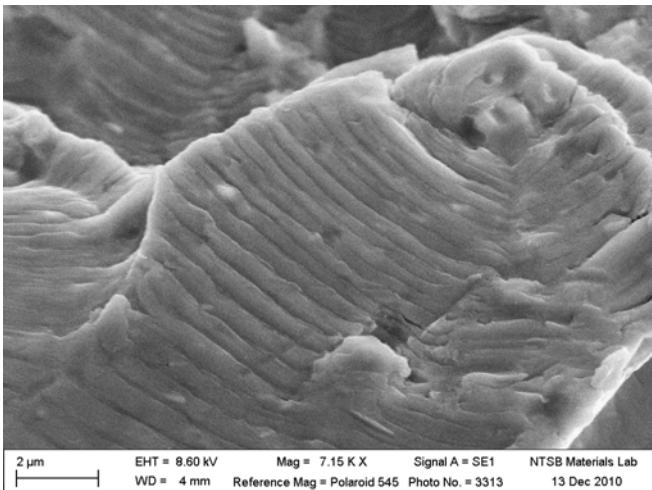
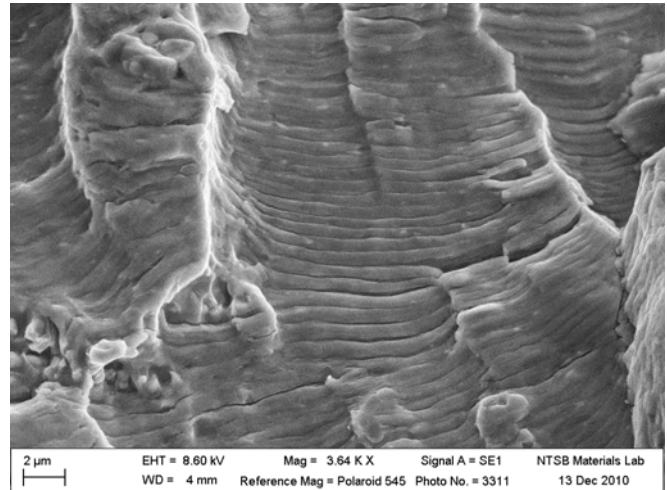
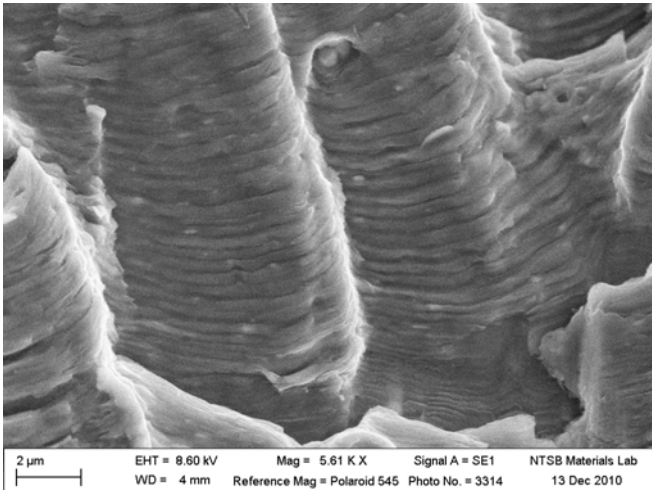
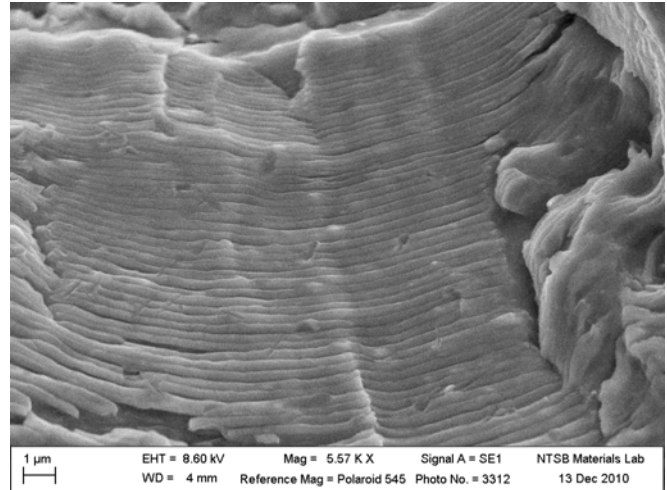
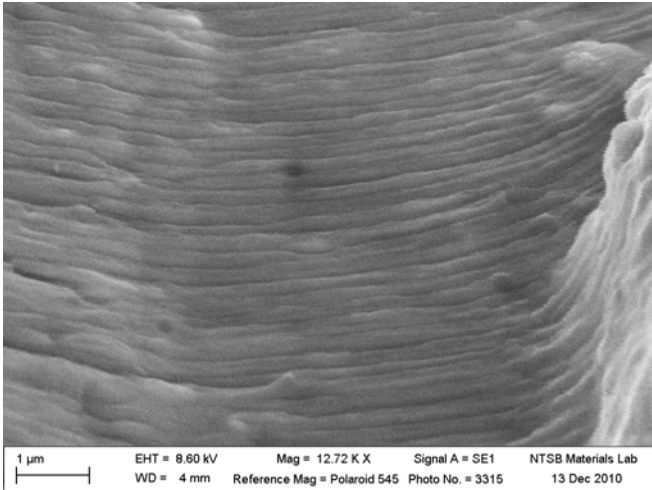






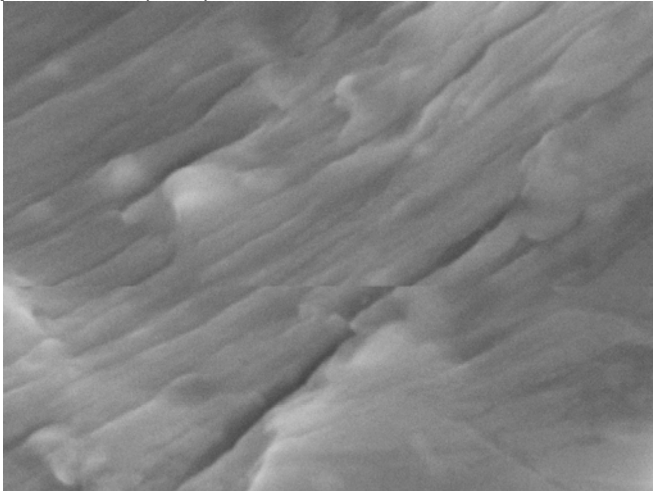
100 µm | EHT = 8.60 kV | Mag = 79 X | Signal A = SE1 | NTSB Materials Lab
WD = 5 mm | Reference Mag = Polaroid 545 | Photo No. = 3308 | 13 Dec 2010



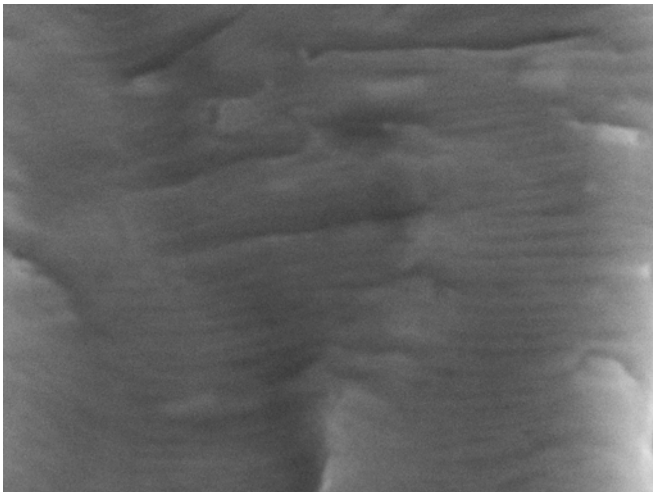




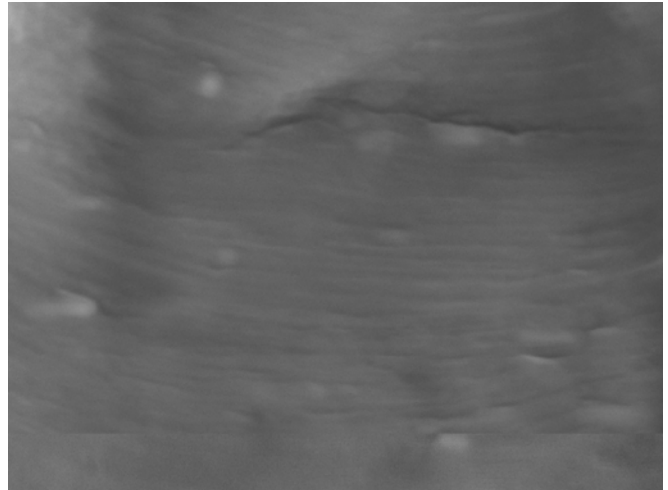
The following images were recorded without the scale bar. Each image is 1024 pixels wide and has a pixel size listed below. To determine the scaled magnification divide the measure image width in mm and divide by the pixel size (mm) times 1024.



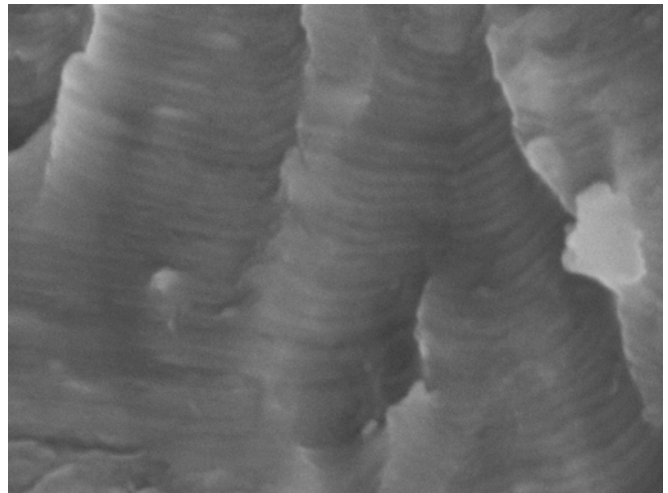
Pixel size .00378 mm



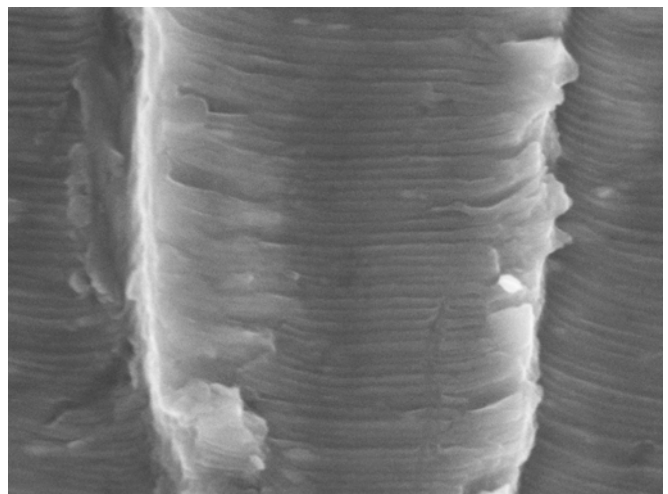
Pixel size .00387 mm



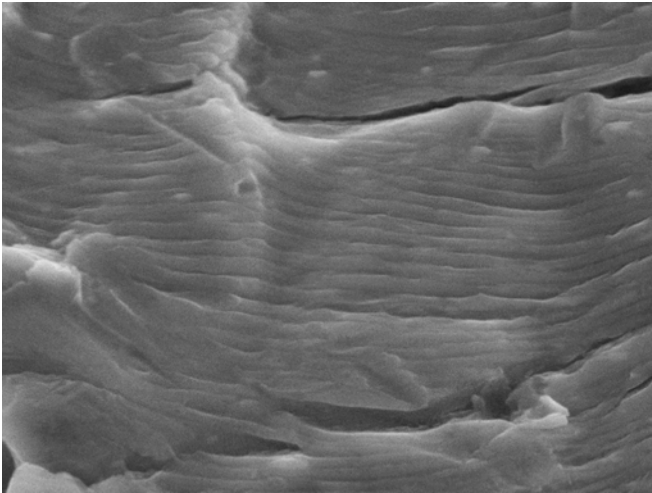
Pixel size .00418 mm



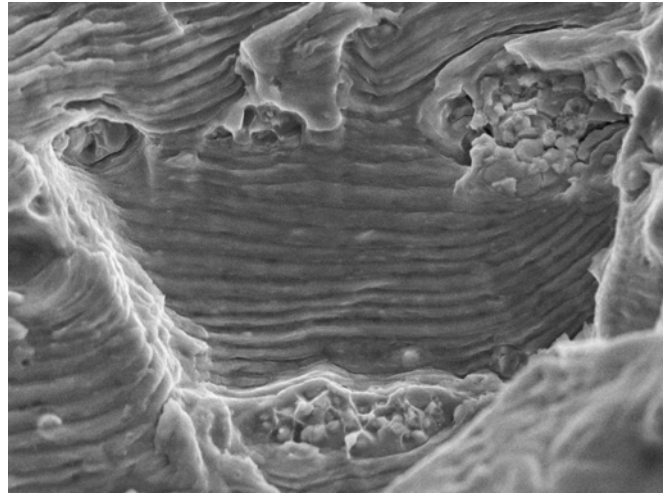
Pixel size .00540 mm



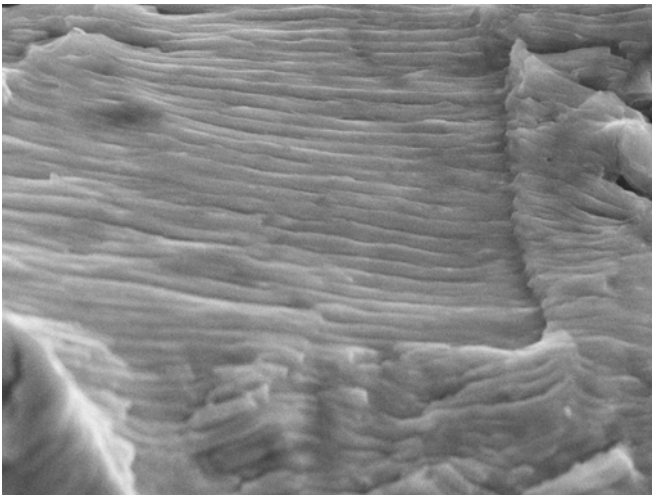
Pixel size .00895 mm



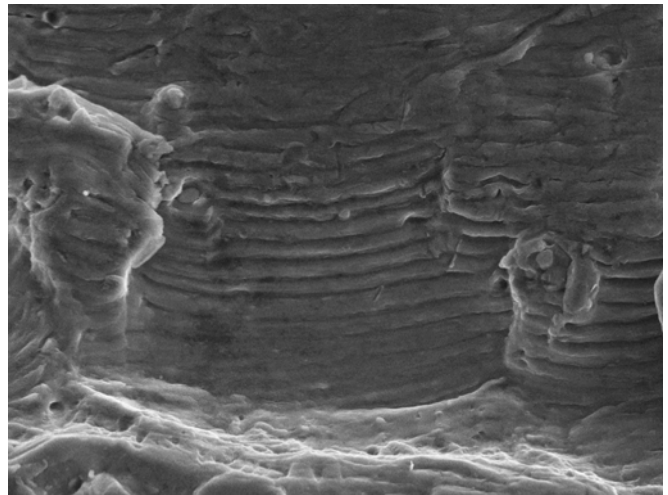
Pixel size .0113 mm



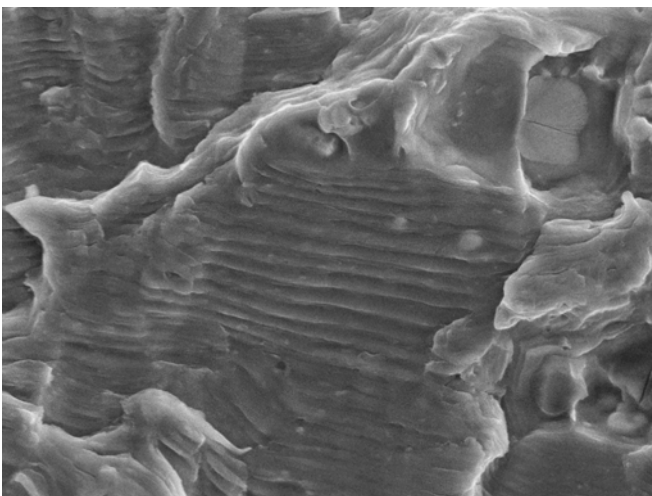
Pixel size .0369 mm



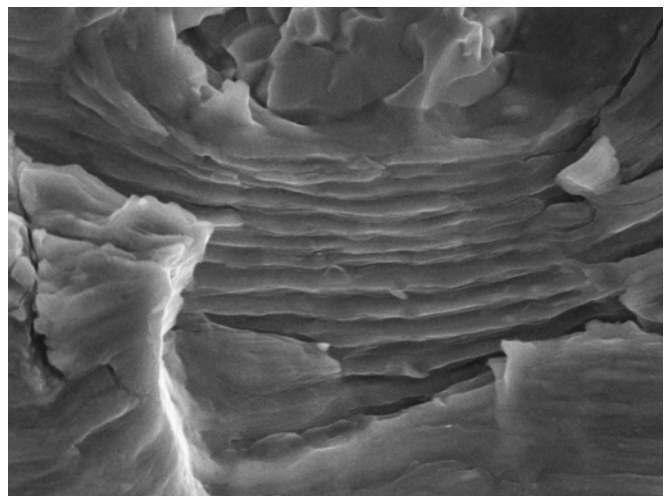
Pixel size .0171 mm



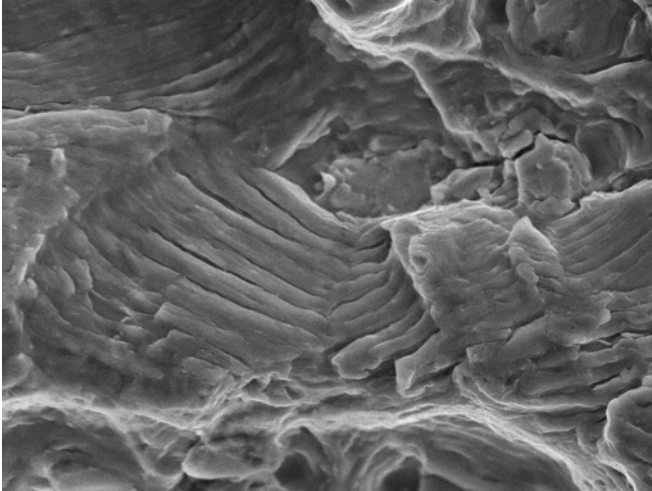
Pixel size .0432 mm



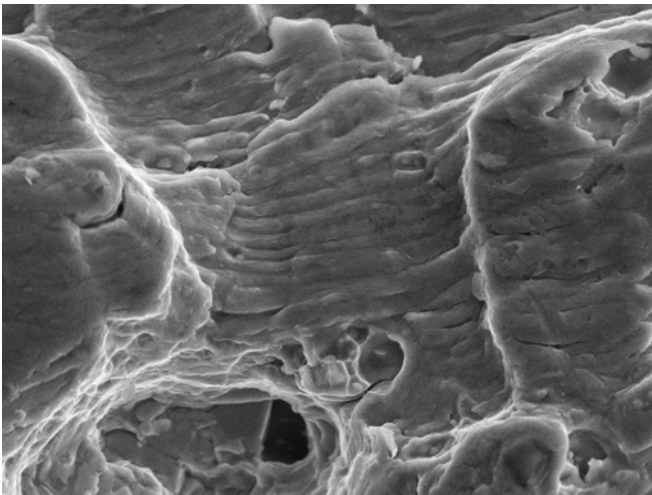
Pixel size .0268 mm



Pixel size .0163 mm

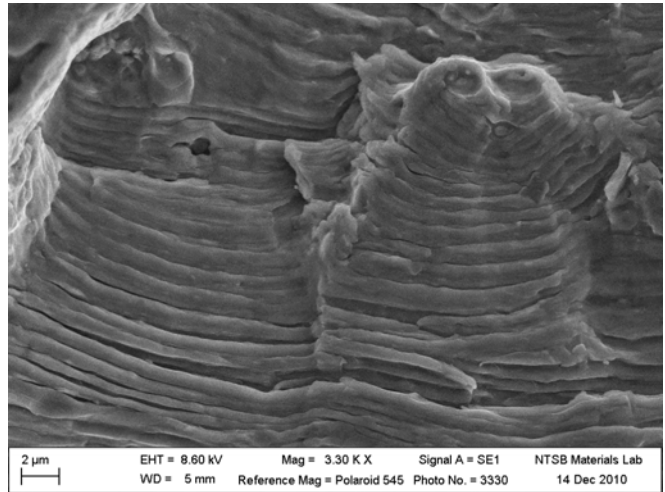
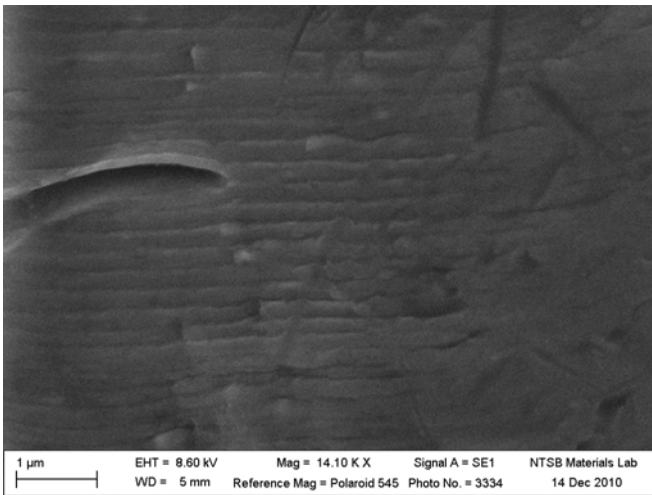
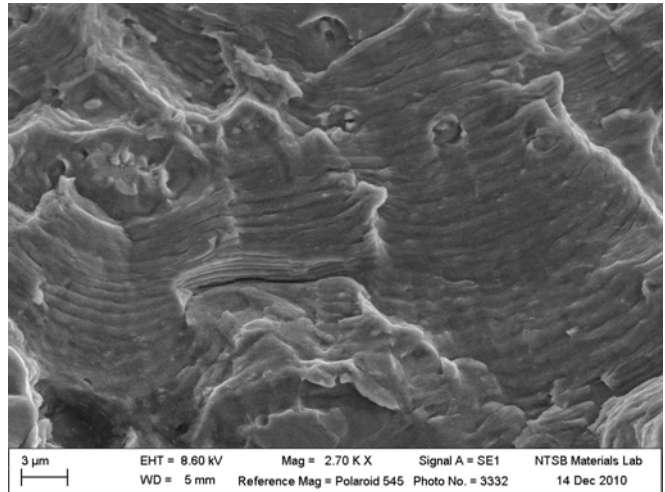
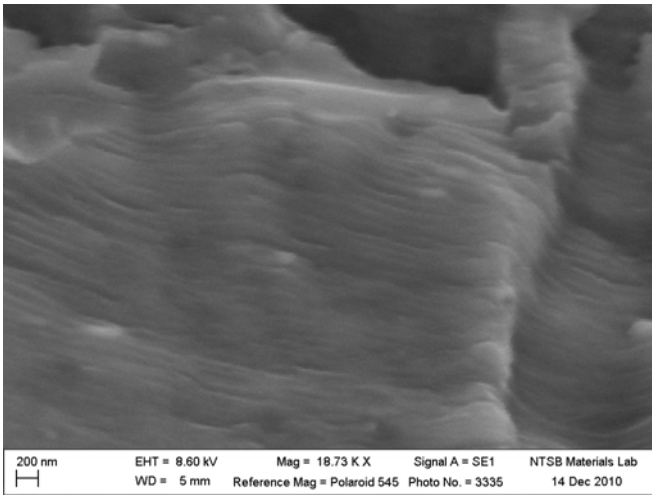
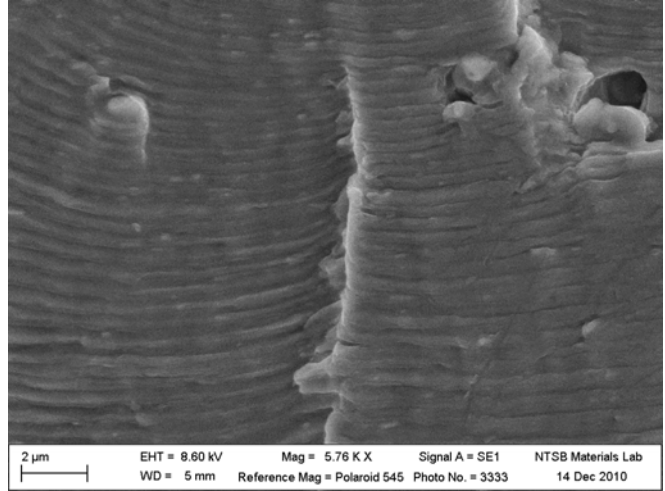
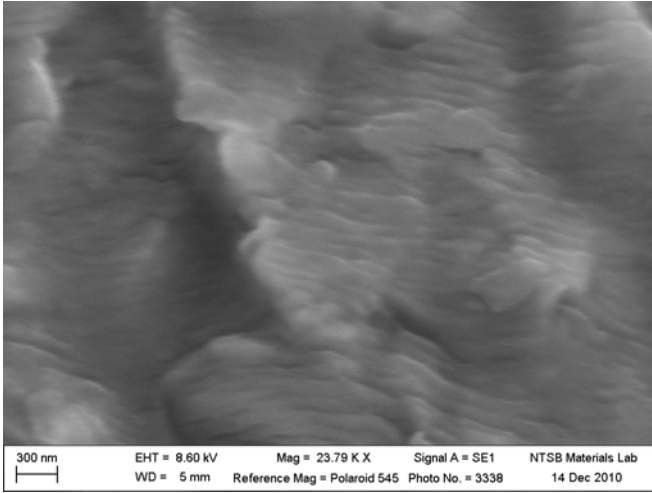


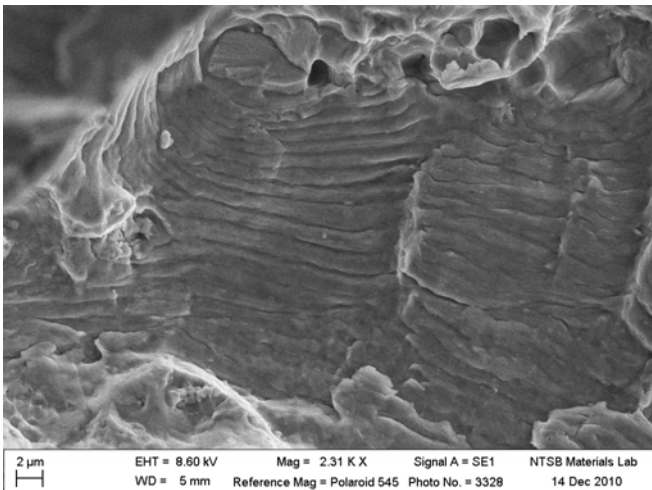
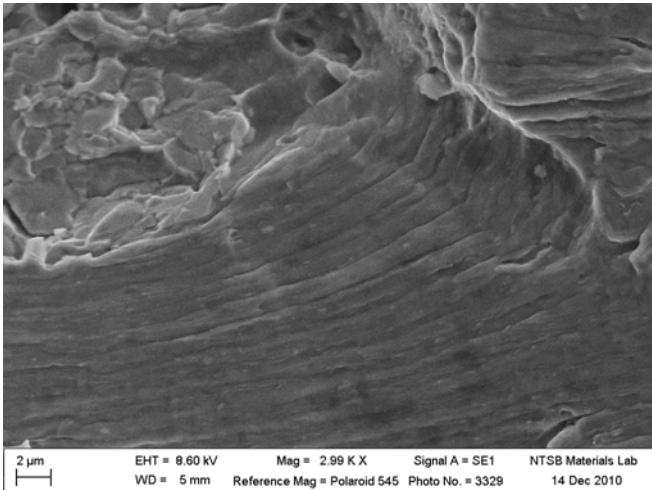
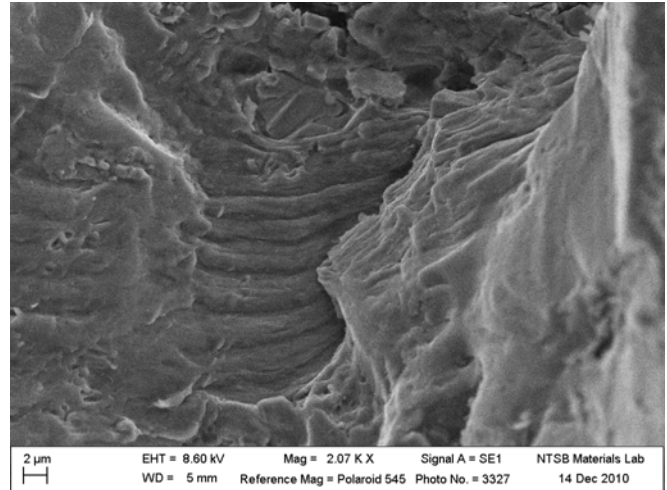
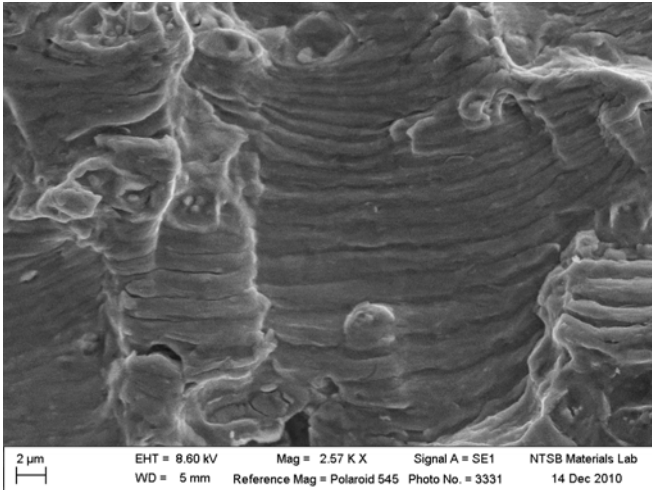
Pixel size .0333 mm



Pixel size .0362 mm

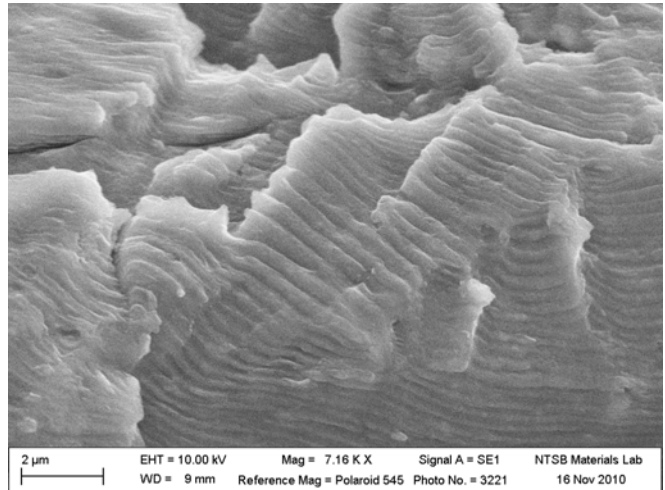
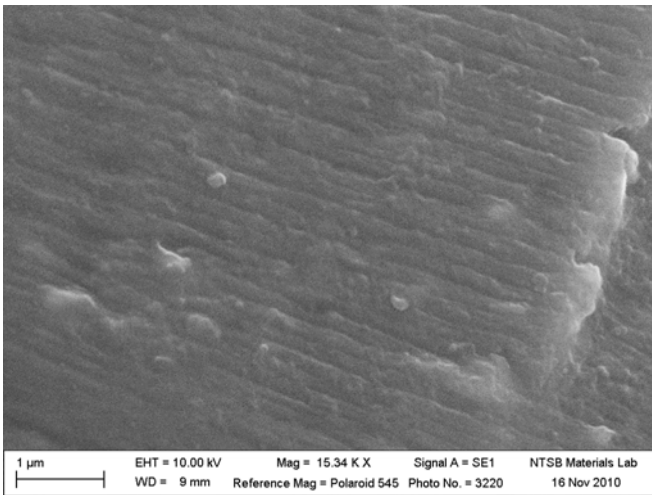
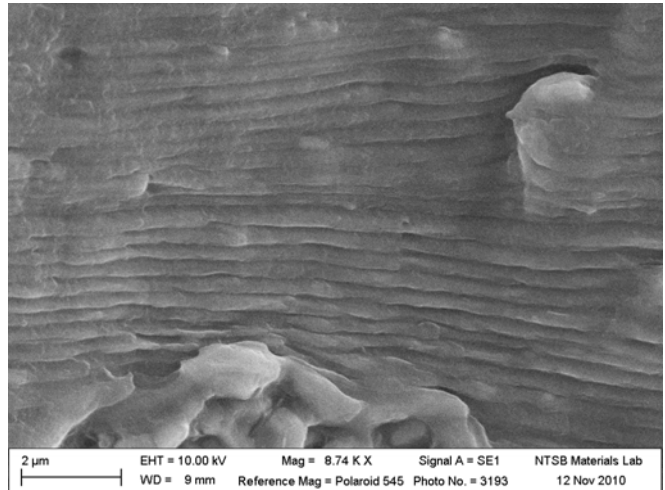
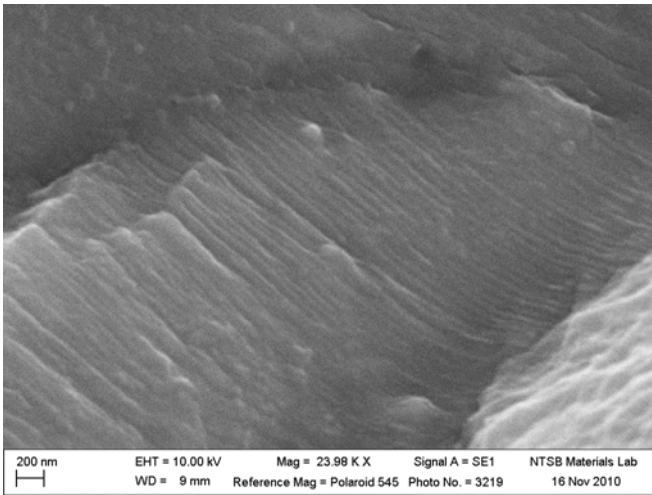
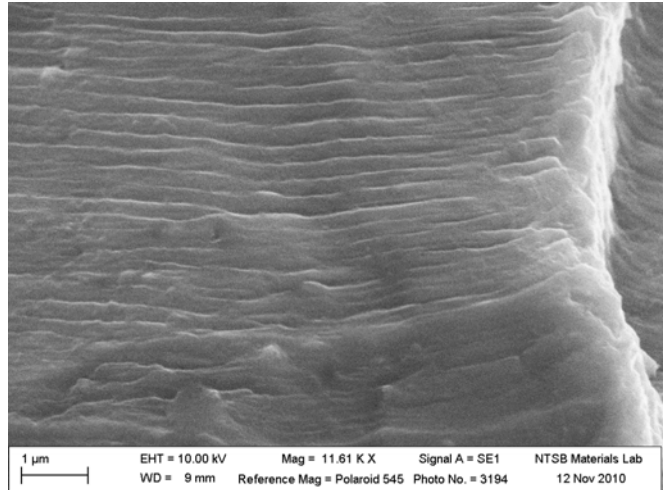
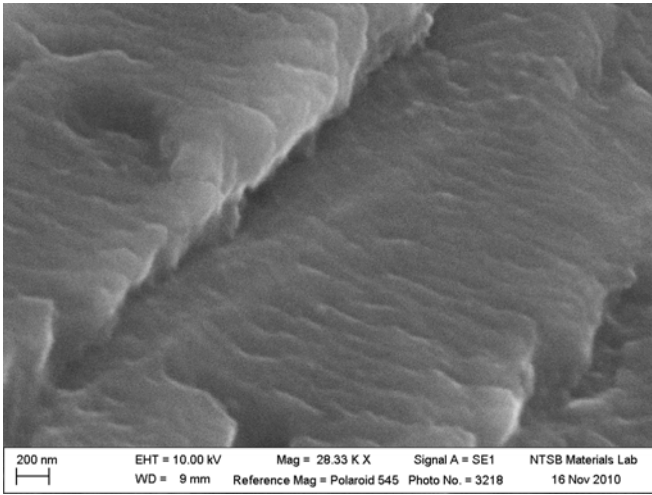


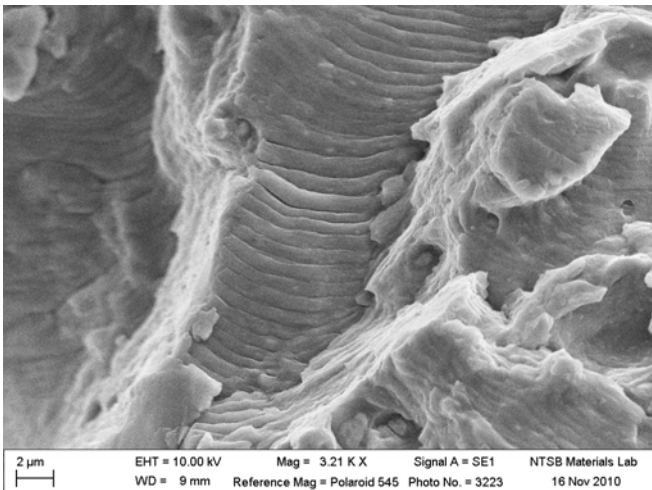
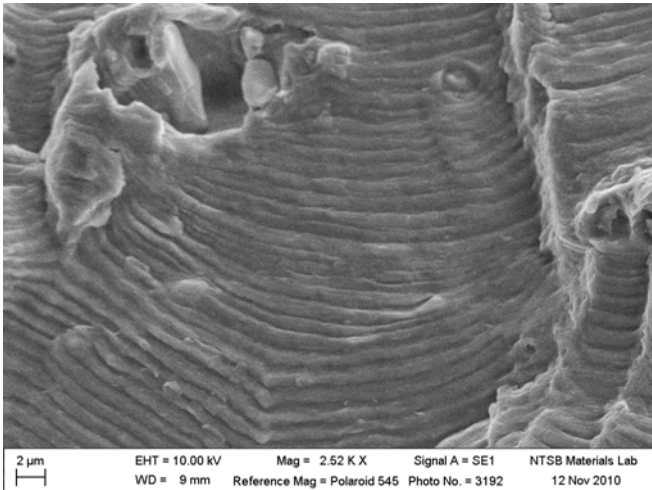
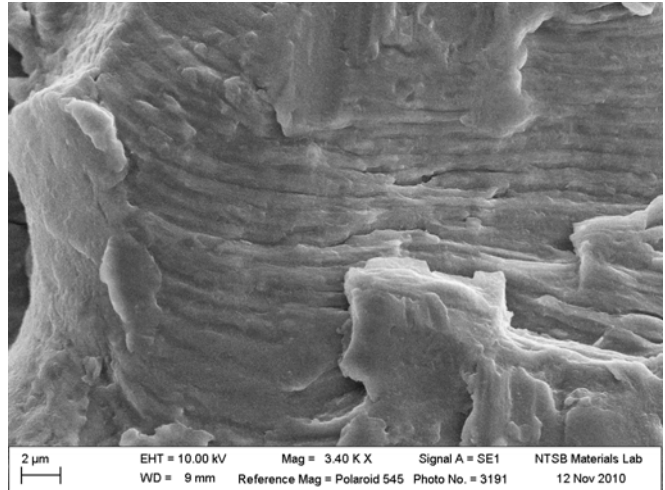
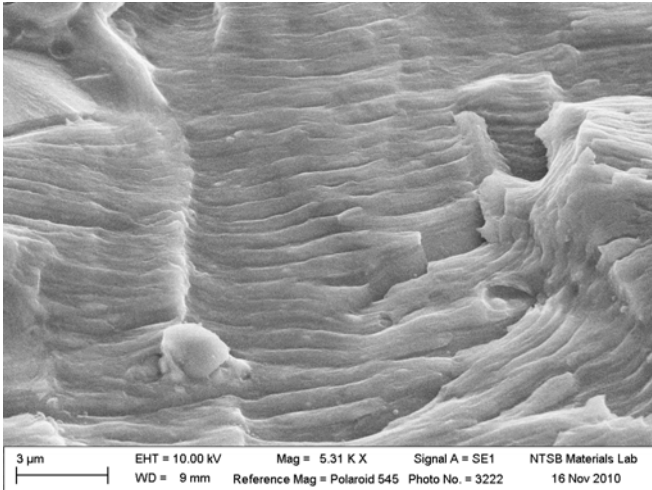


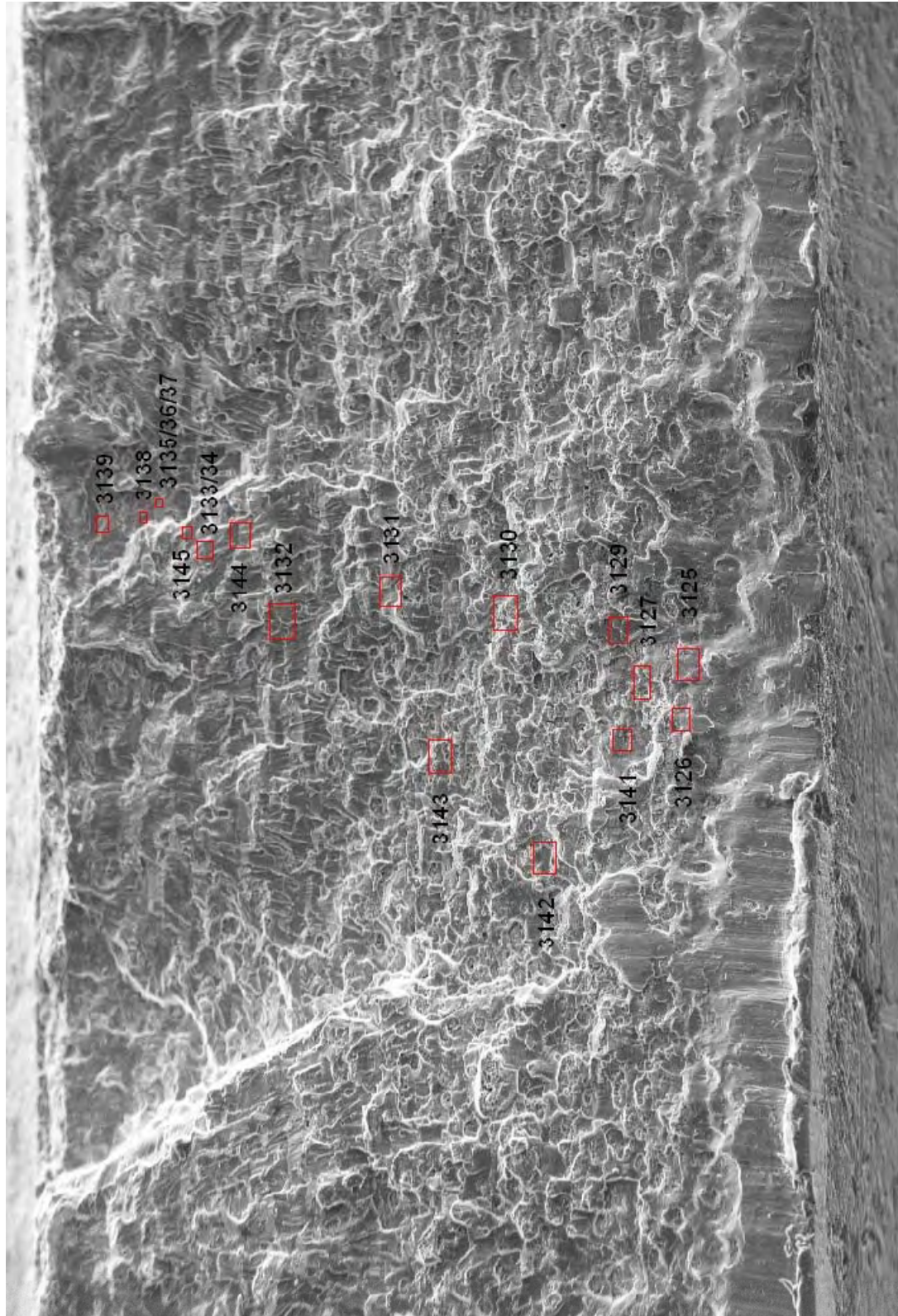




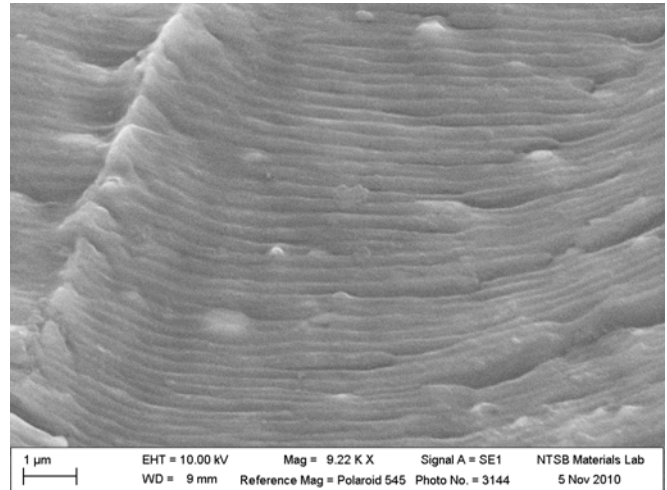
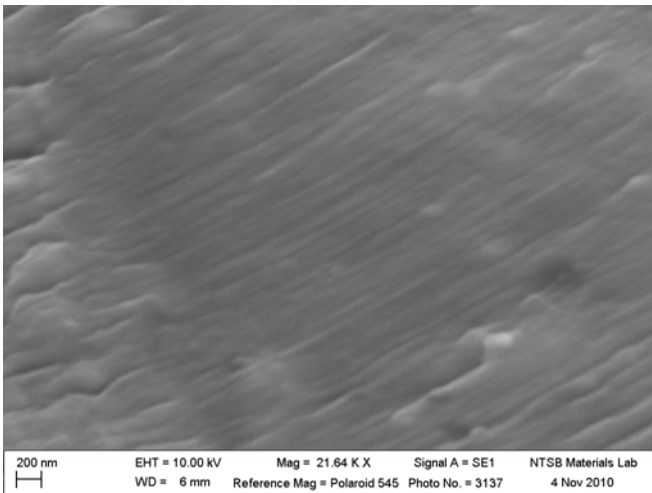
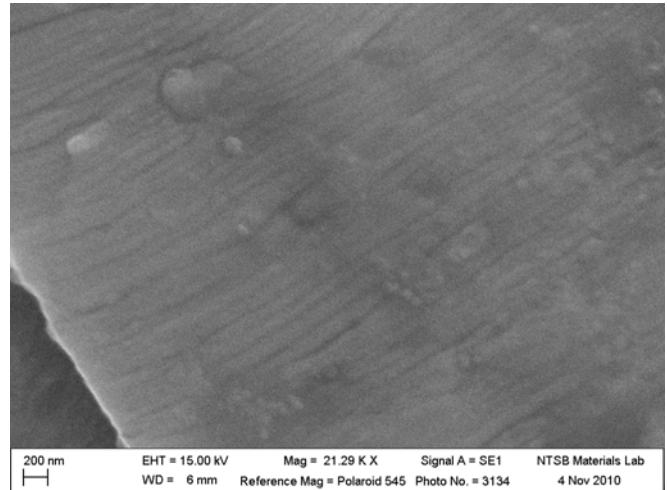
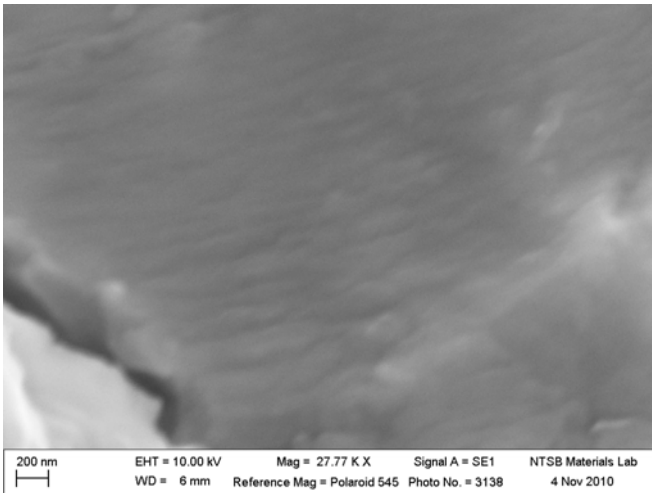
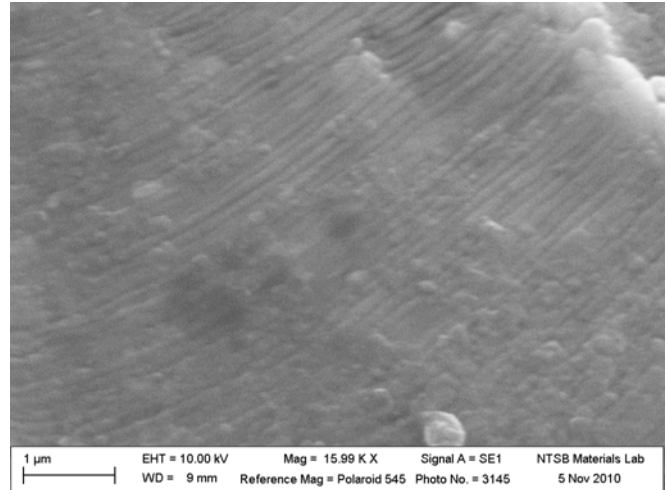
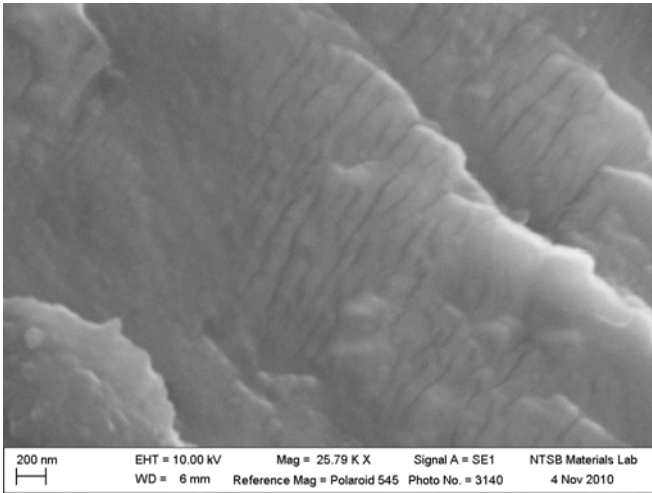
100 µm | EHT = 10.00 kV | Mag = 80 X | Signal A = SE1 | NTSB Materials Lab
WD = 9 mm | Reference Mag = Polaroid 545 | Photo No. = 3190 | 12 Nov 2010

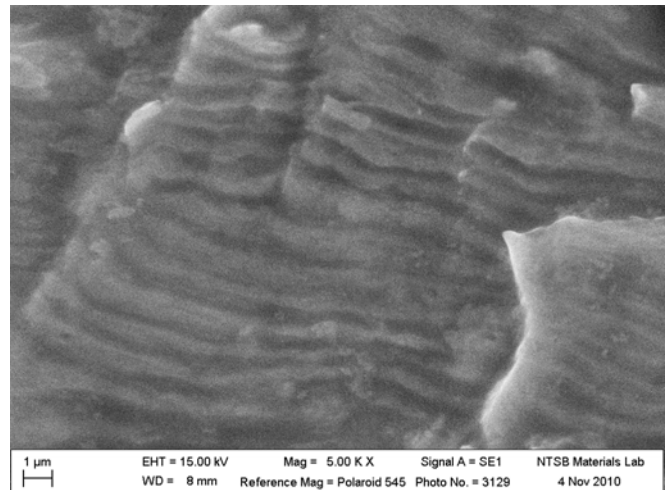
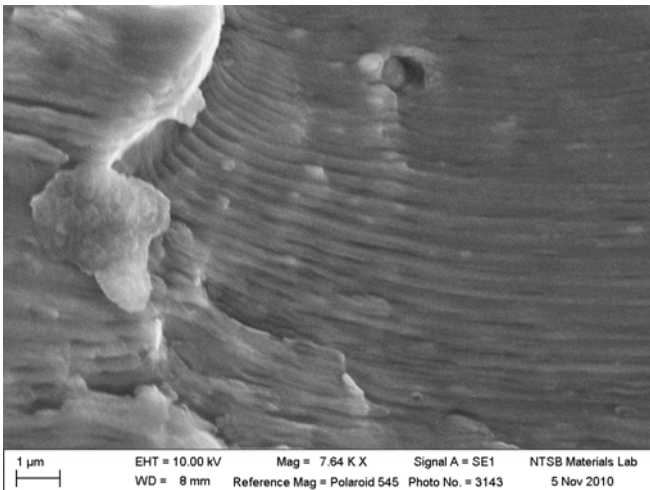
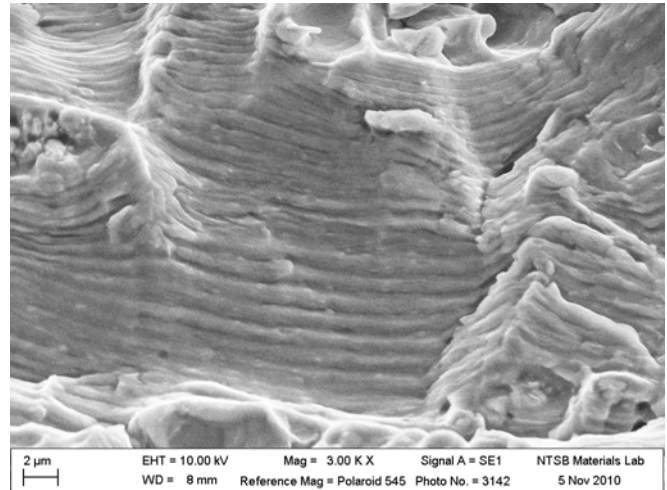
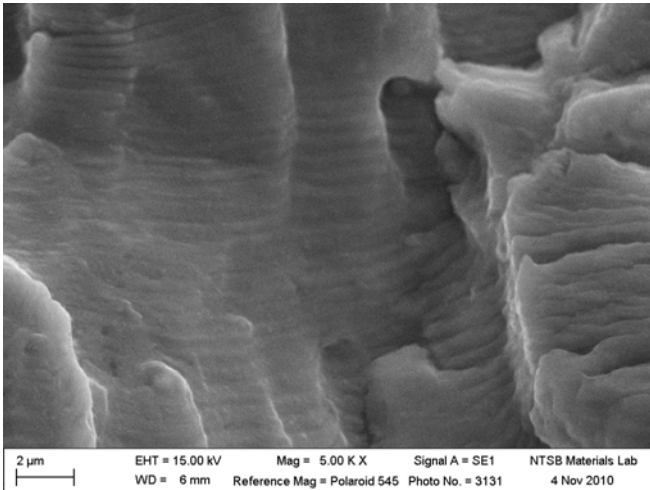
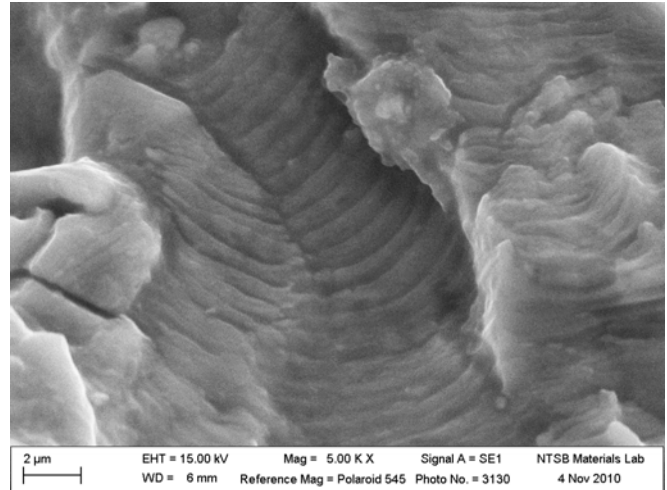
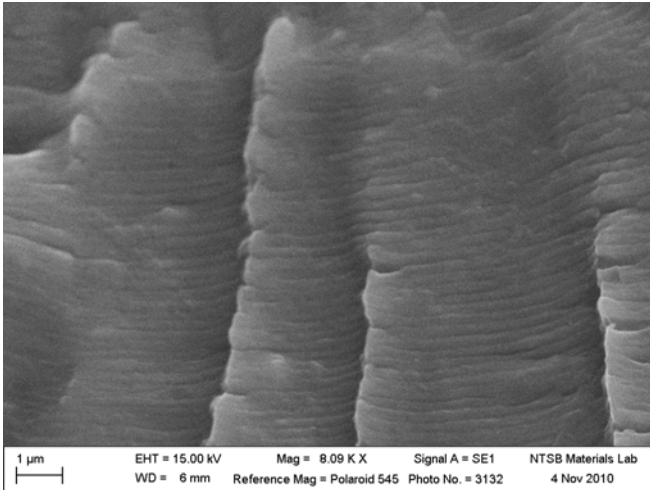


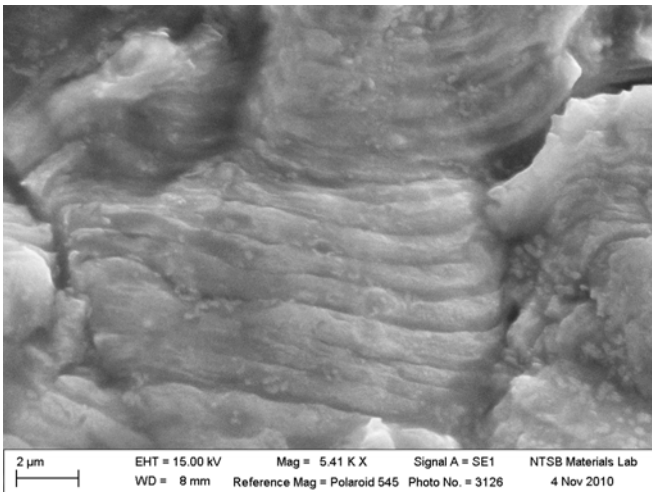
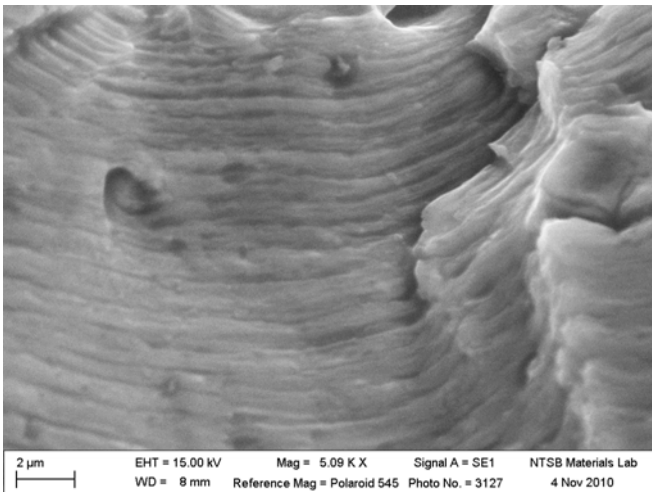
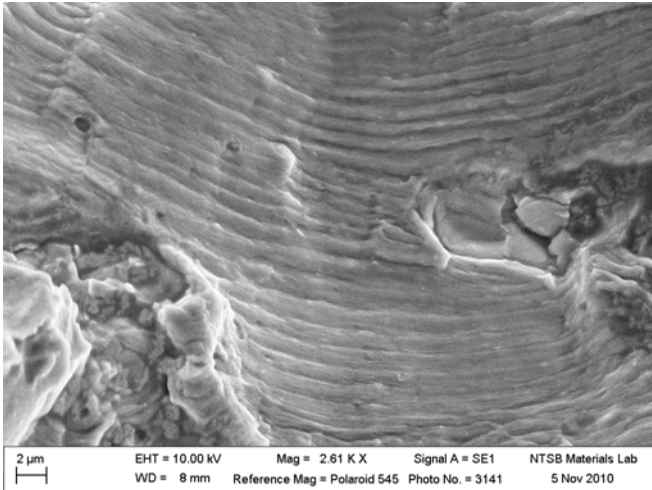


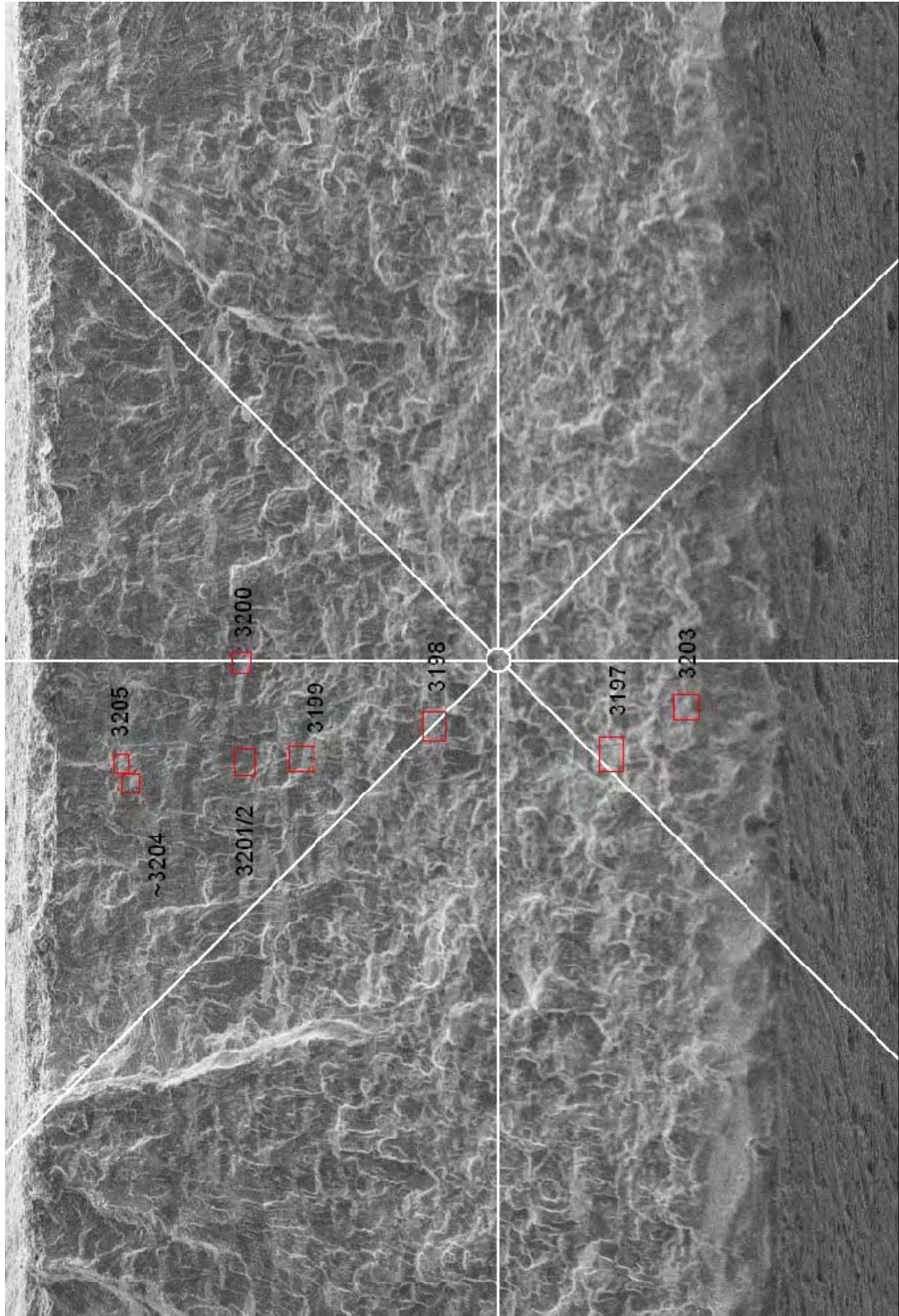


200 μm | EHT = 15.00 kV | Mag = 83 X | Signal A = SE1 | NTSB Materials Lab
WD = 8 mm | Reference Mag = Polaroid 545 | Photo No. = 3124 | 4 Nov 2010









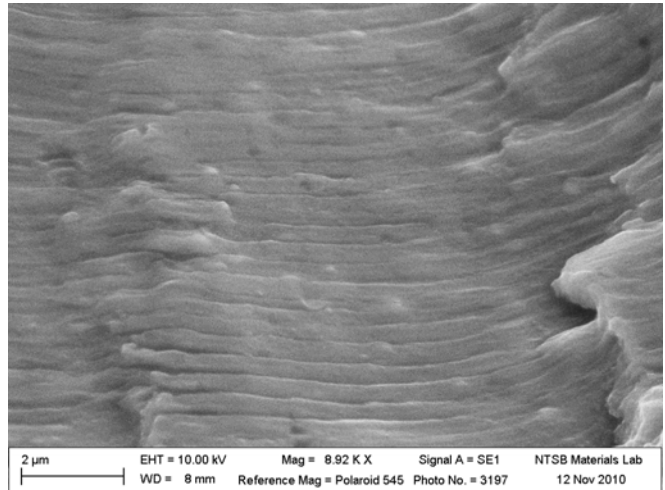
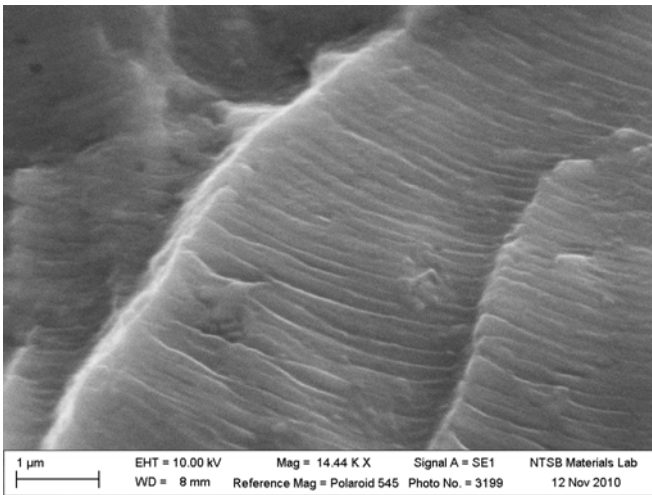
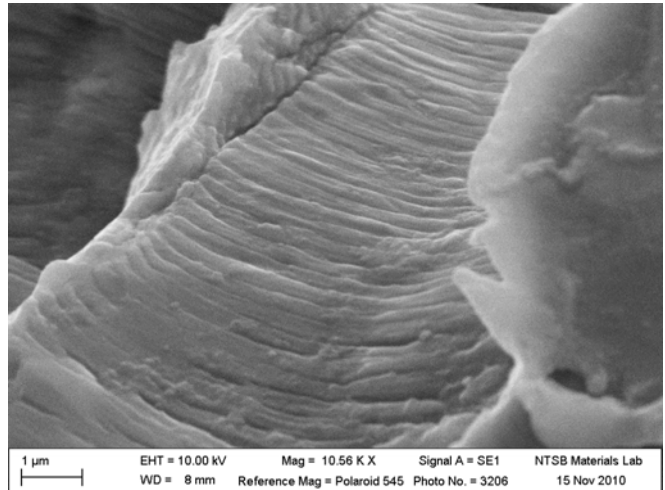
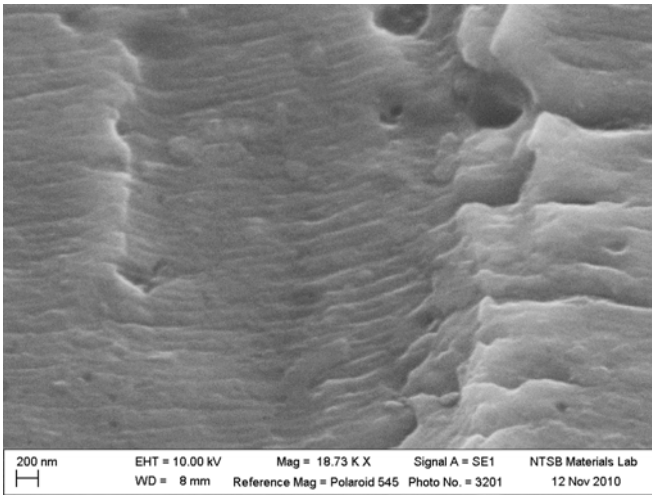
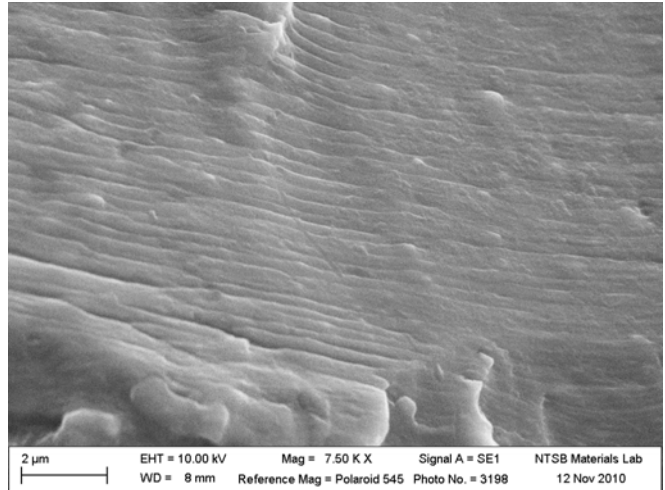
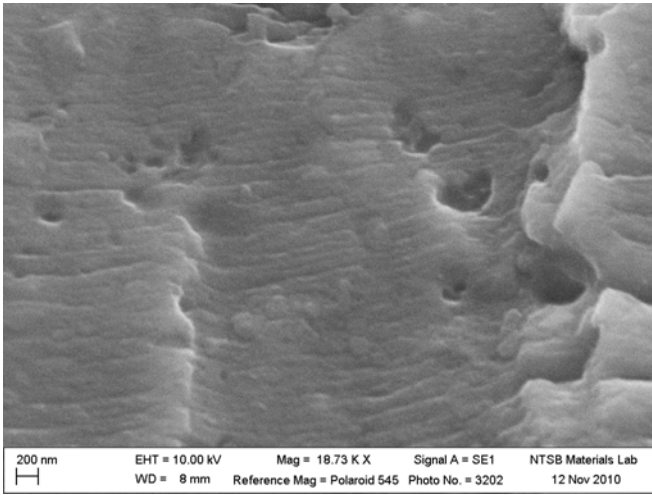
NTSB Materials Lab
12 Nov 2010

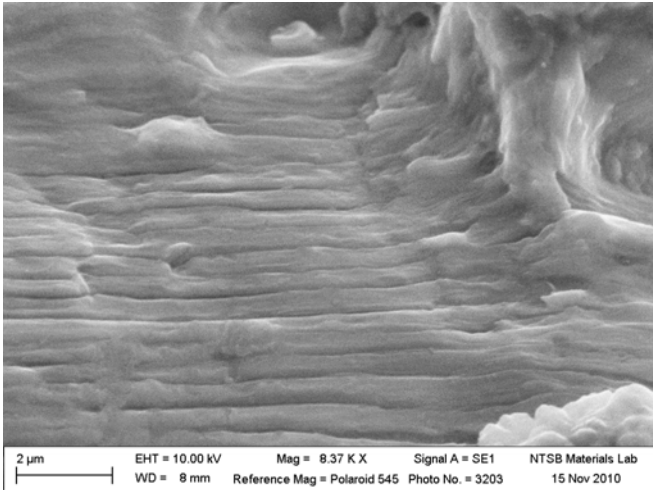
Signal A = SE1
Photo No. = 3196

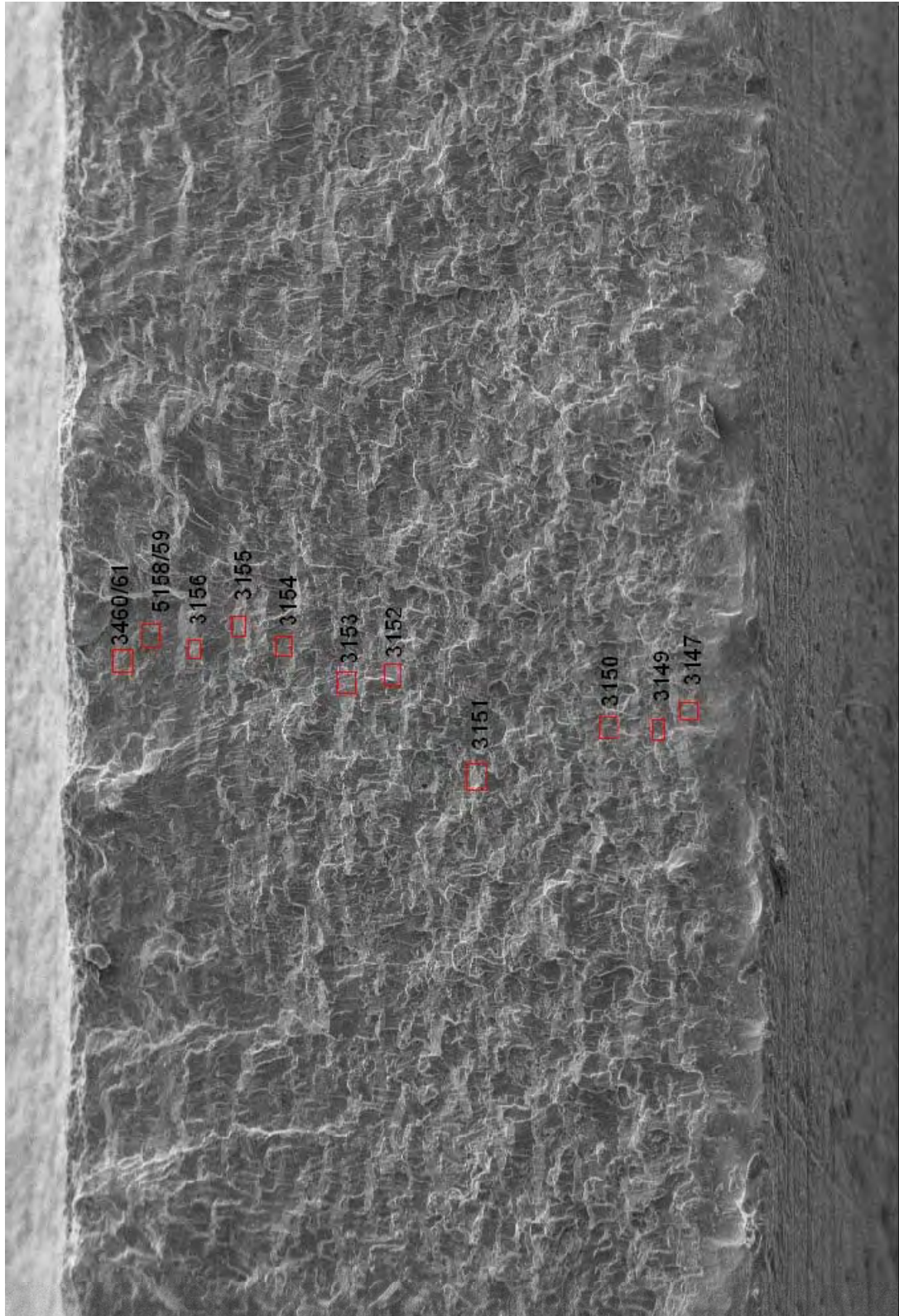
Mag = 76 X
Reference Mag = Polaroid 545

EHT = 10.00 kV
WD = 9 mm

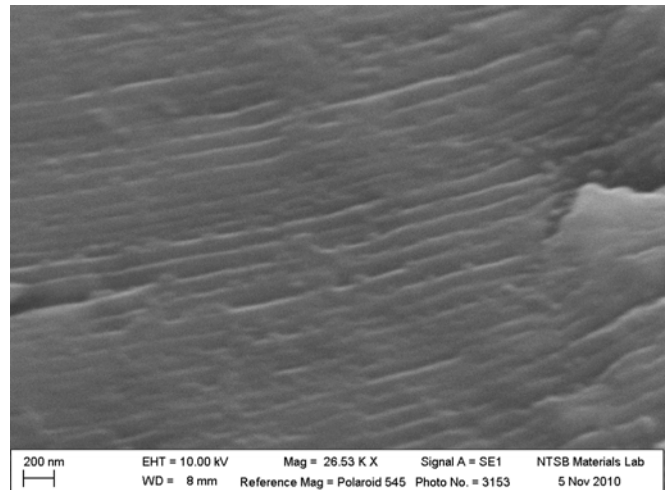
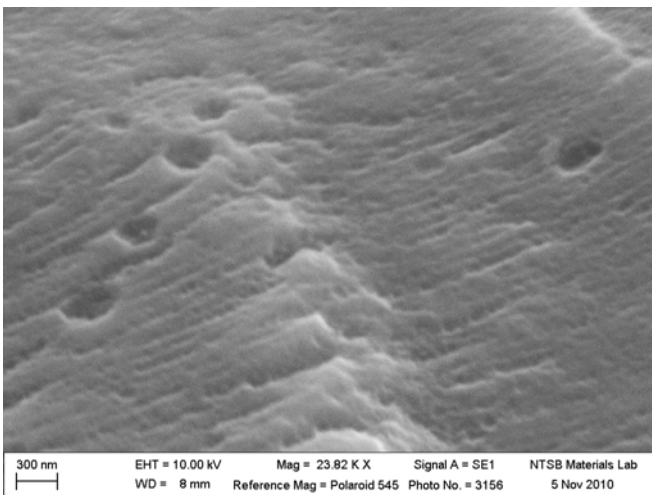
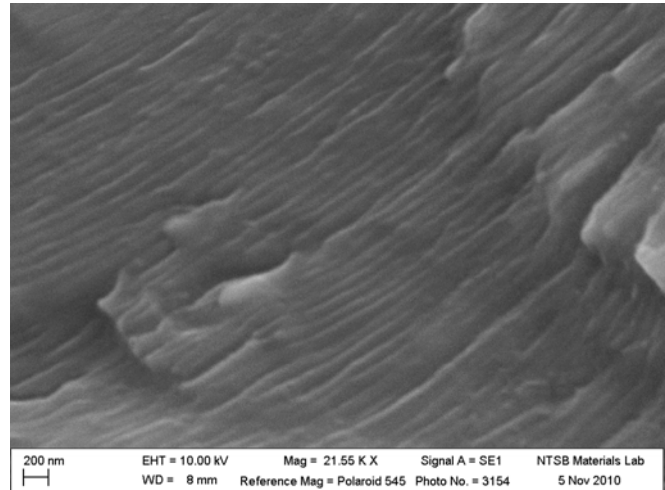
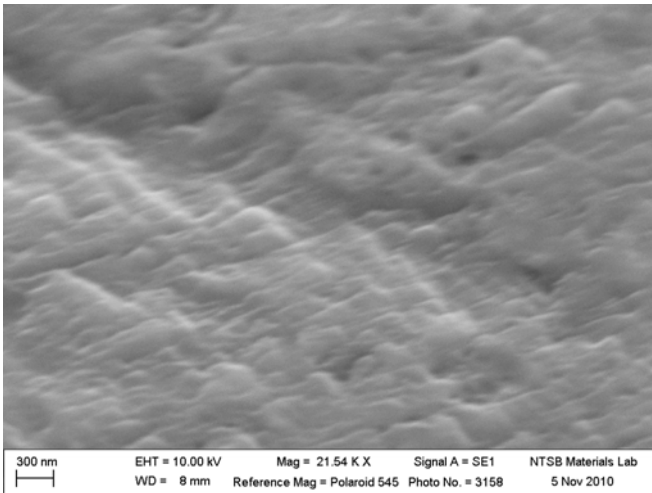
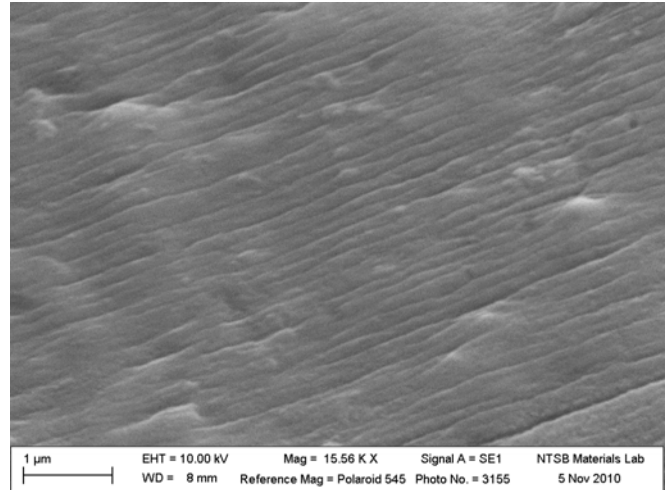
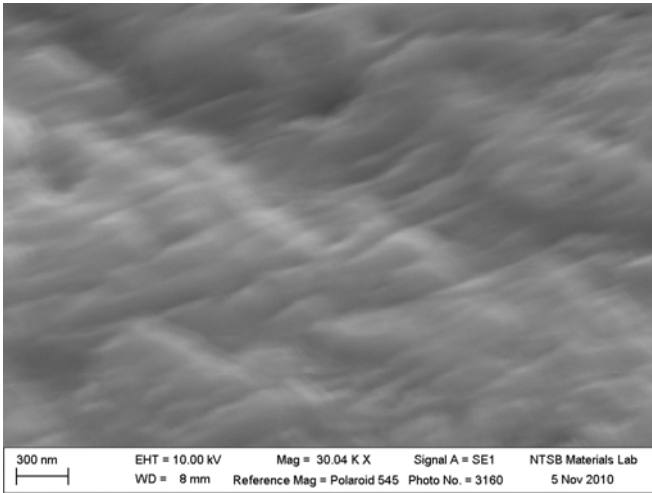
100 µm

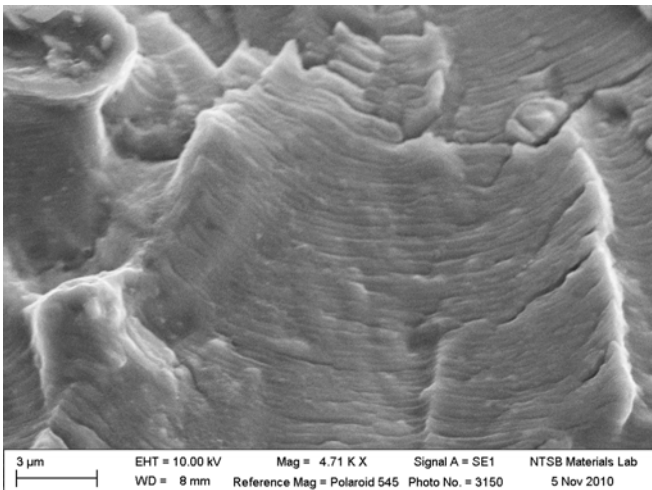
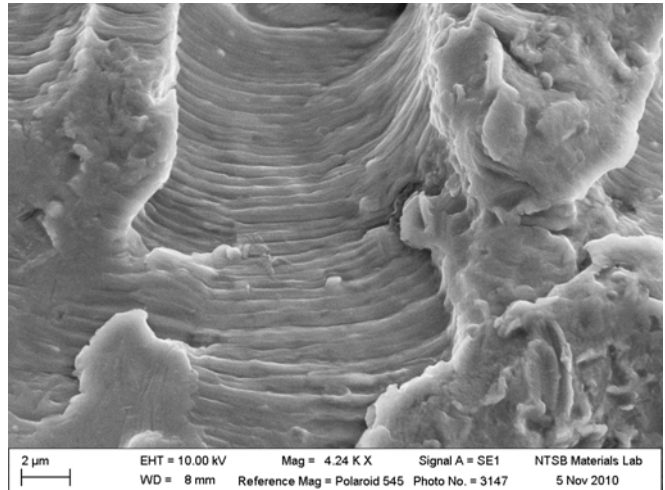
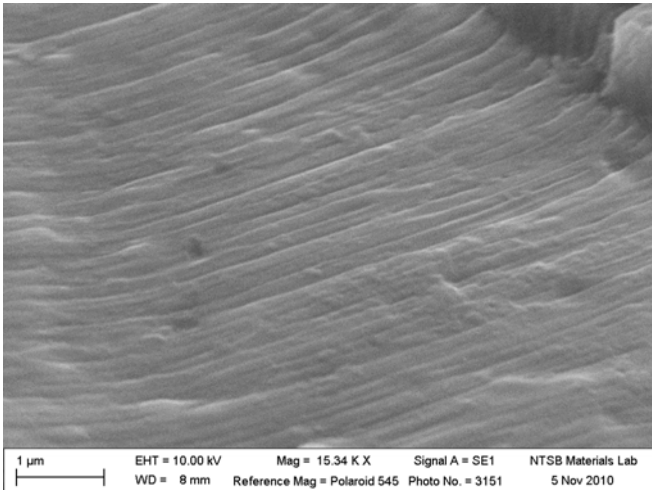
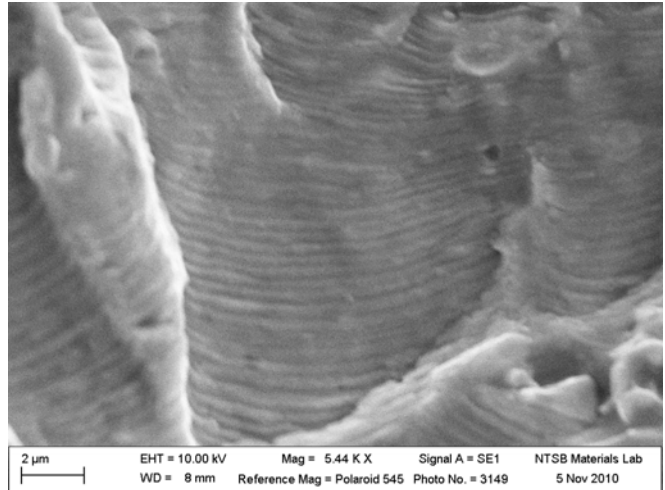
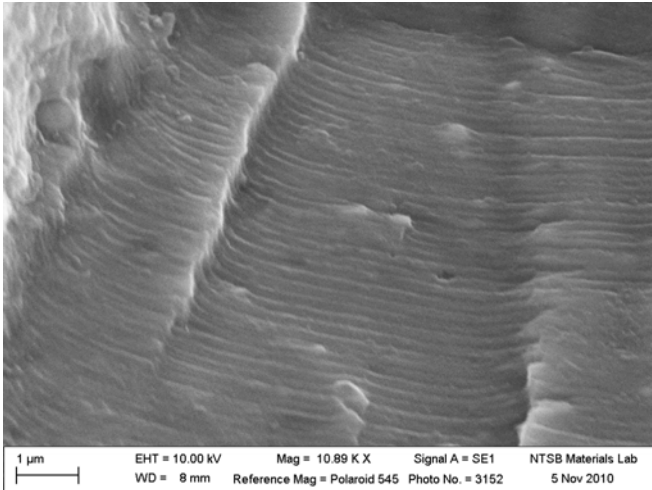


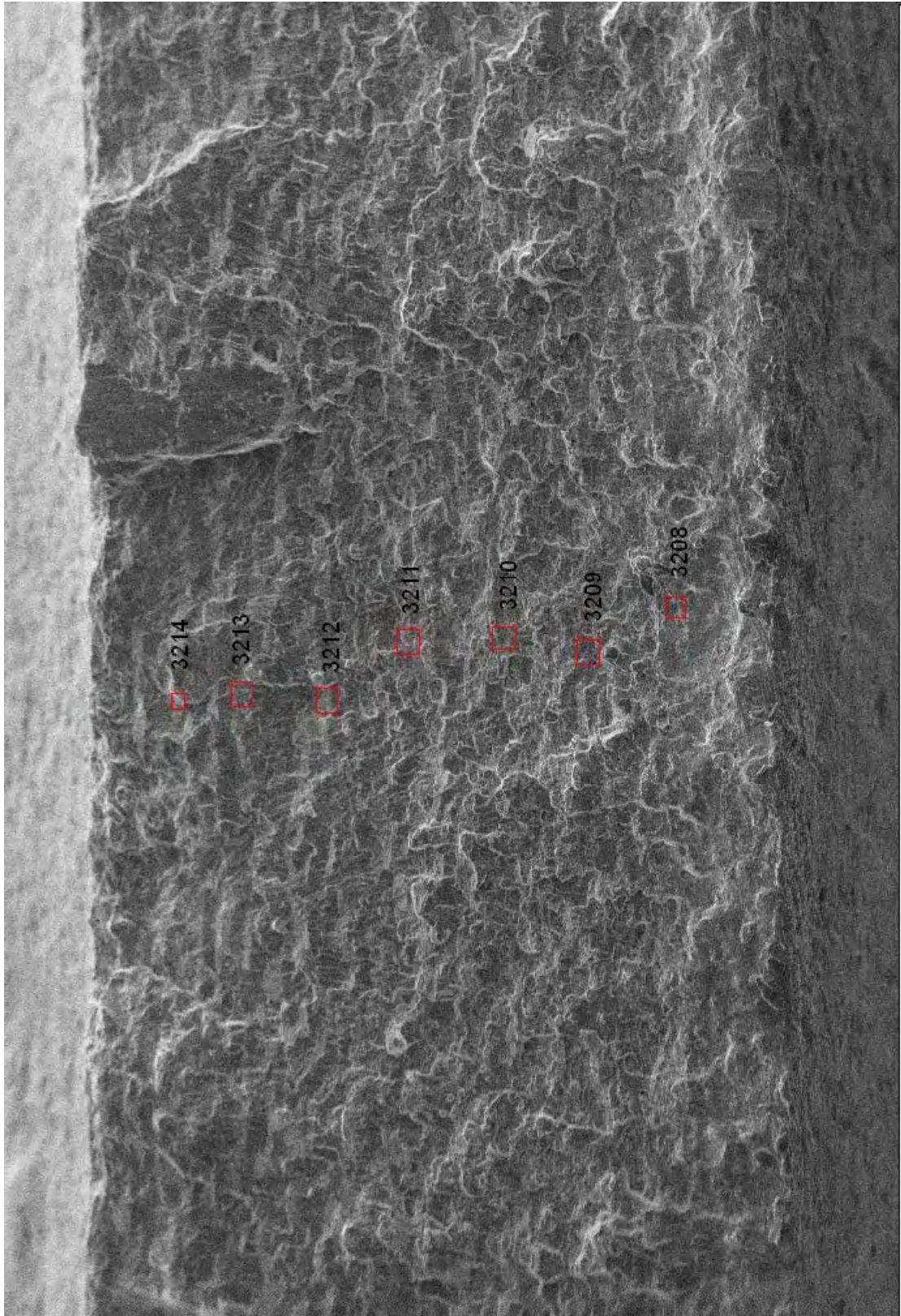




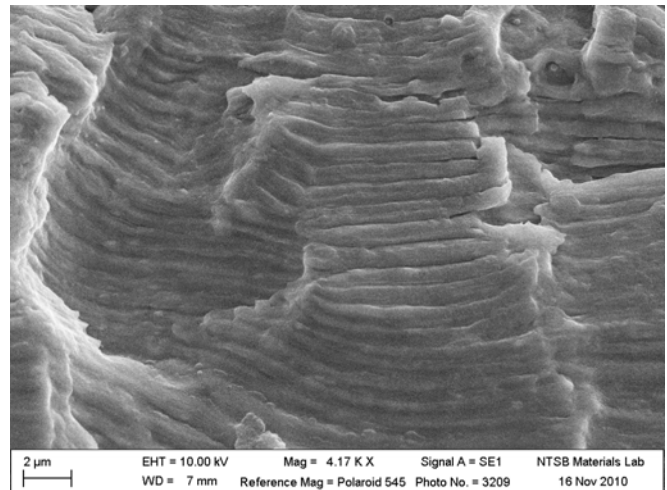
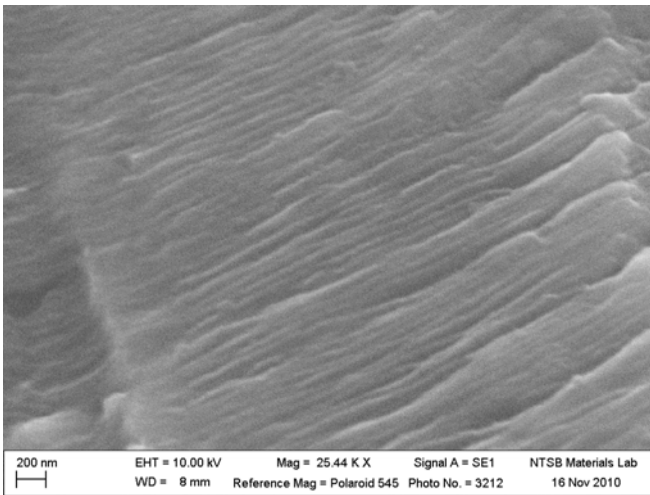
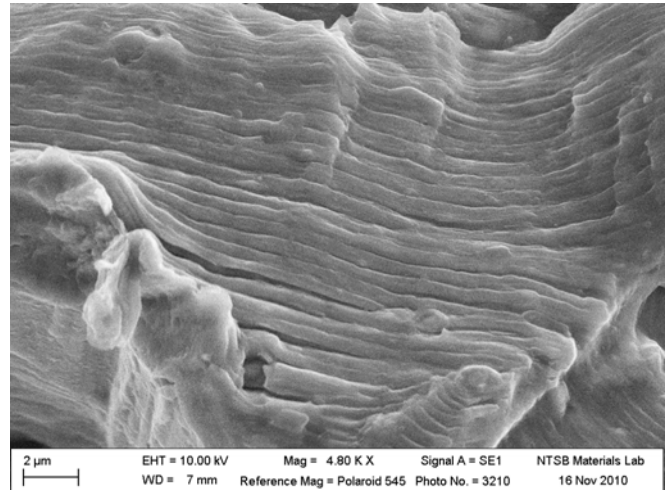
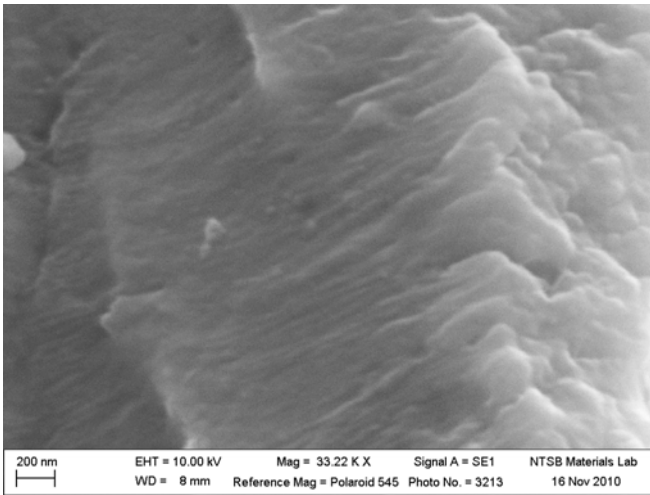
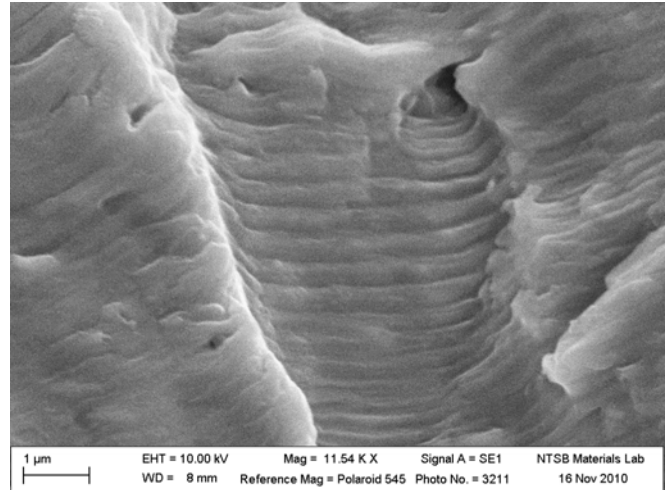
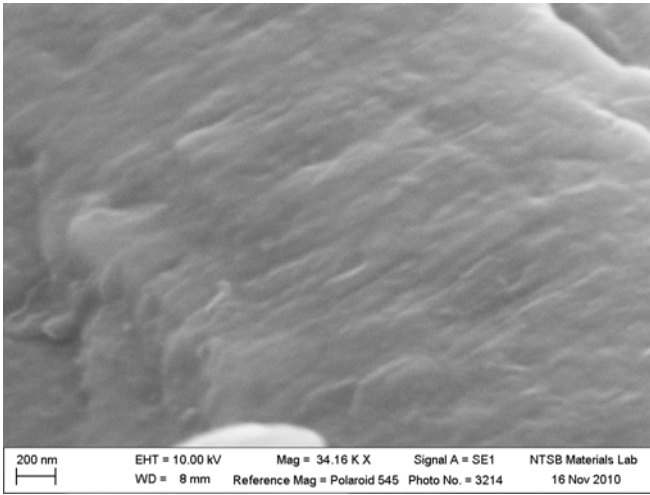
100 μ m | EHT = 10.00 kV | Mag = 75 X | Signal A = SE1 | NTSB Materials Lab
WD = 8 mm | Reference Mag = Polaroid 545 | Photo No. = 3146 | 5 Nov 2010

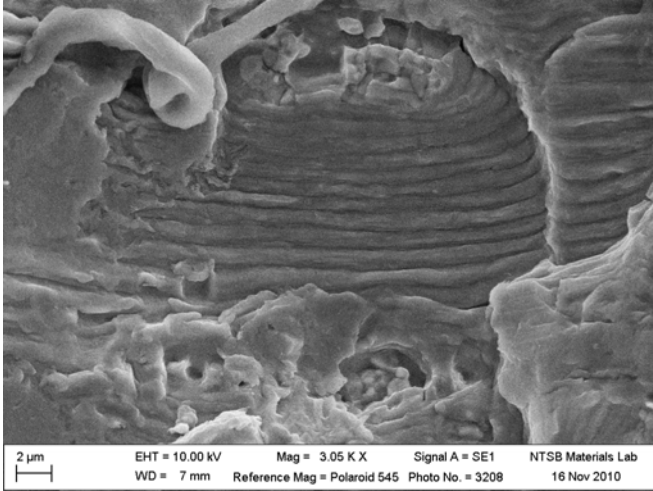


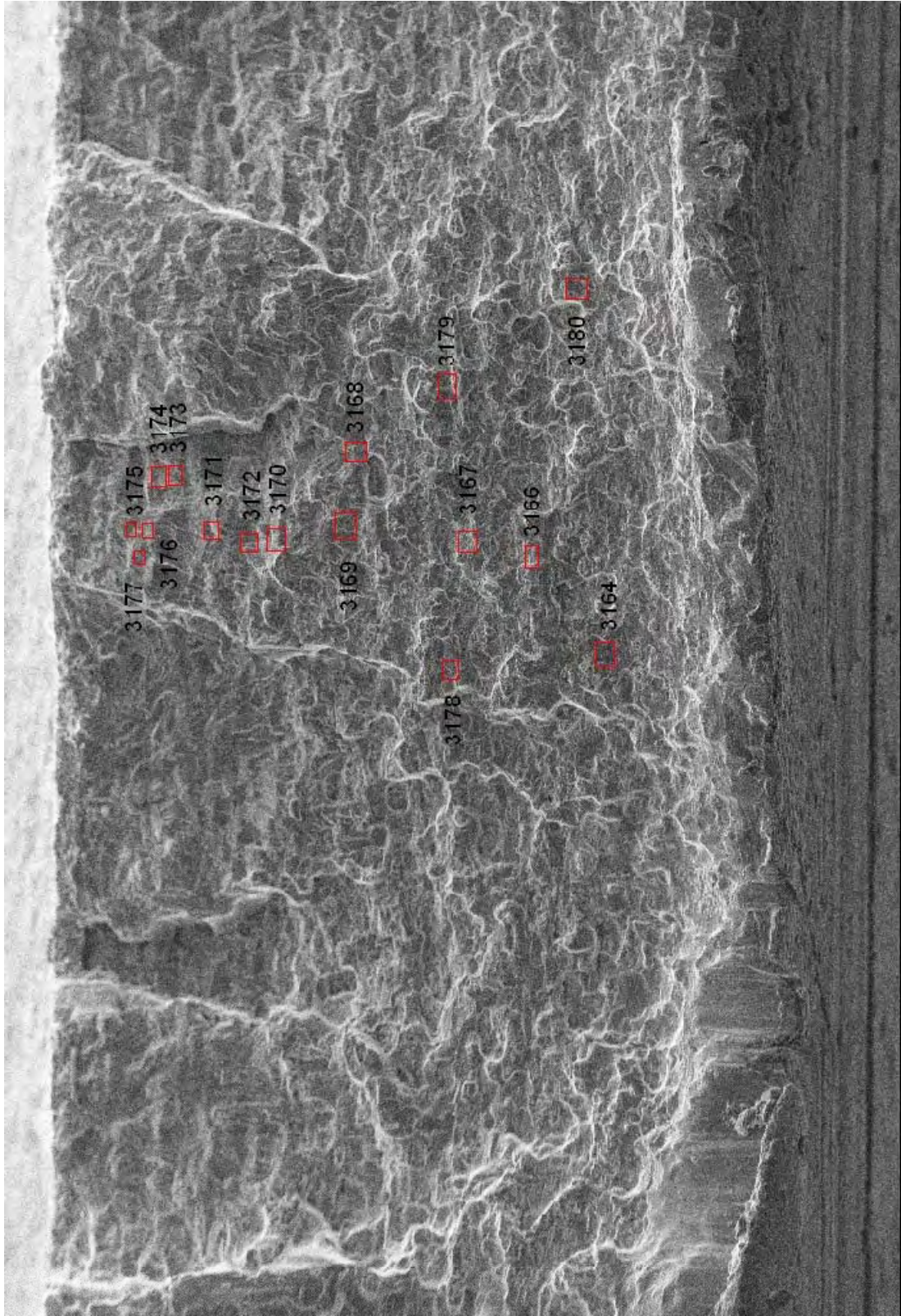




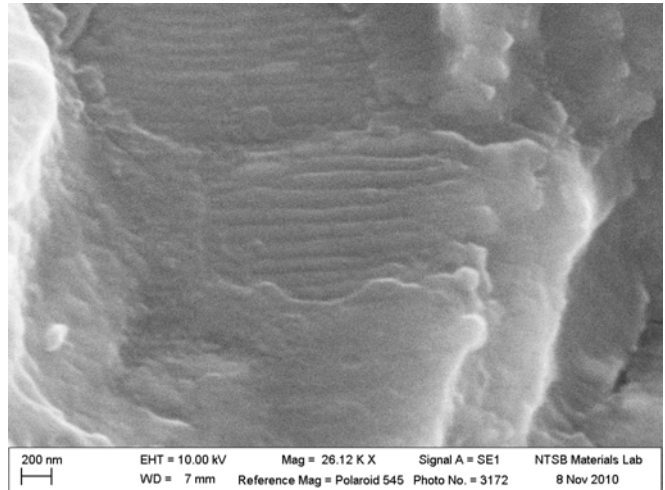
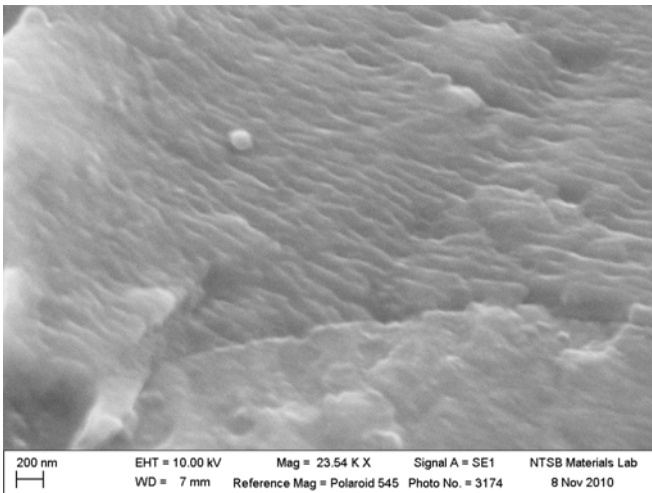
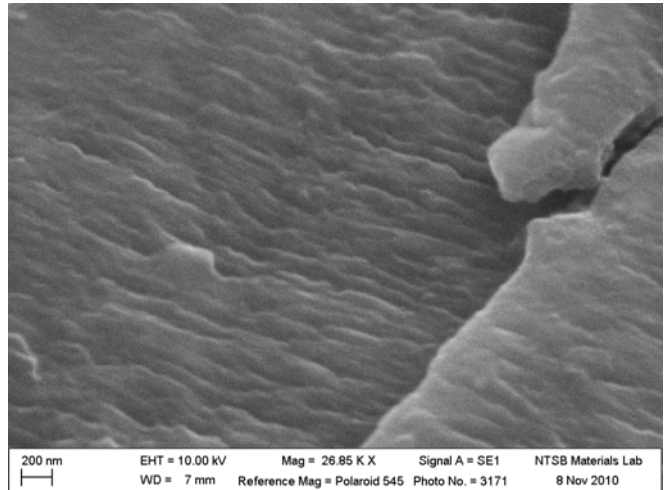
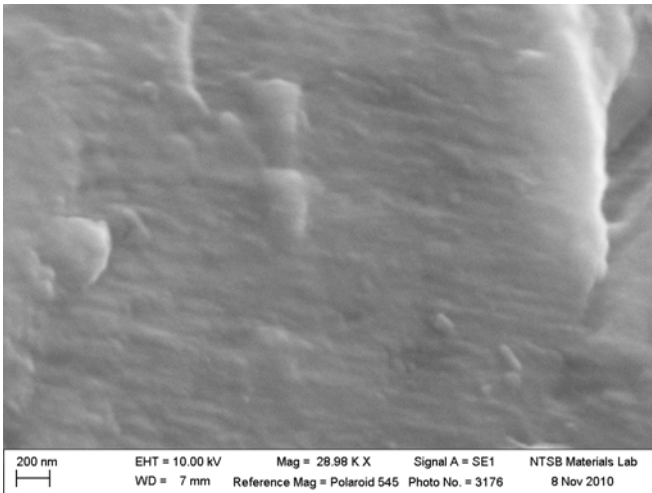
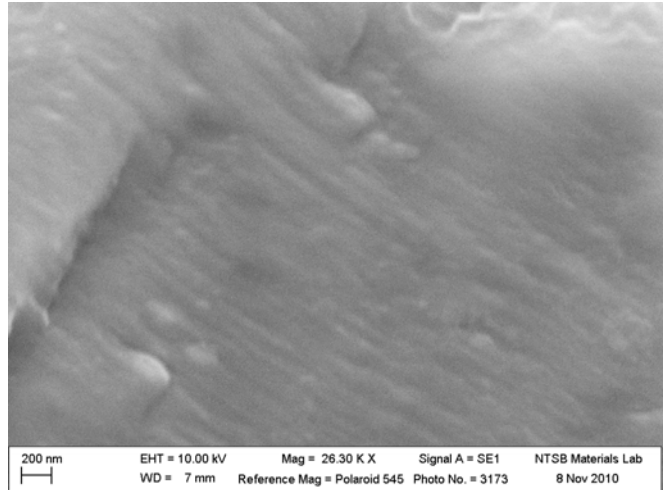
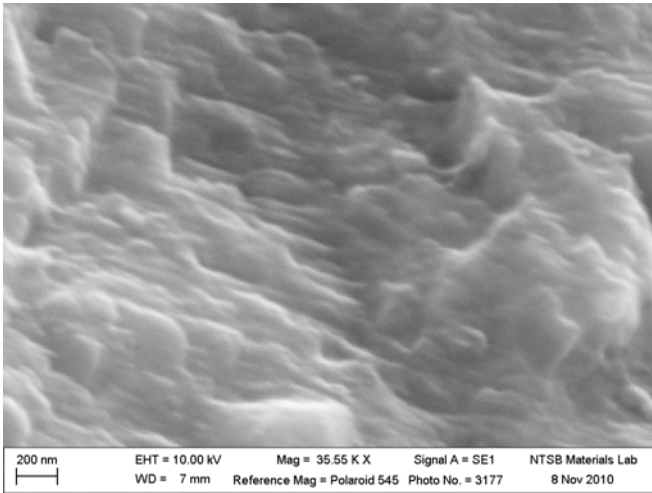
100 µm | EHT = 10.00 kV | Mag = 75 X | Signal A = SE1 | NTSB Materials Lab
WD = 7 mm | Reference Mag = Polaroid 545 | Photo No. = 3207 | 16 Nov 2010

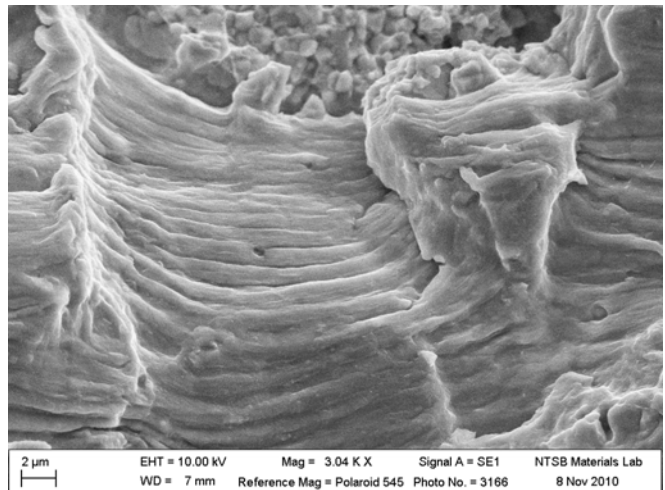
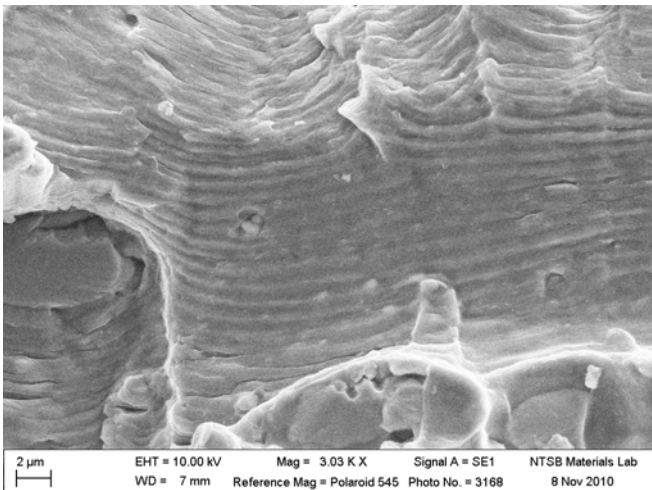
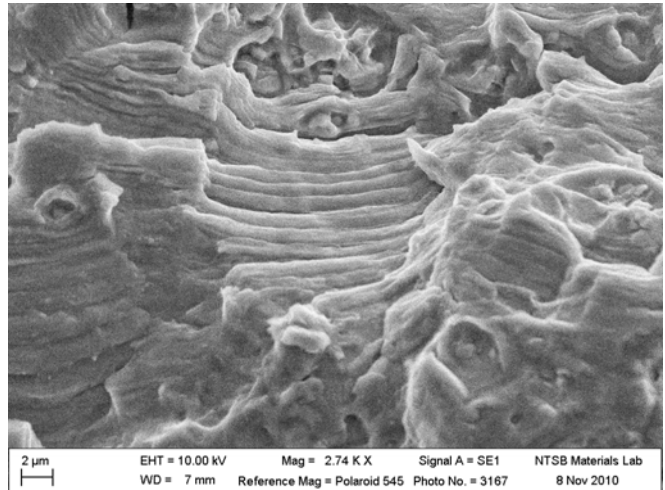
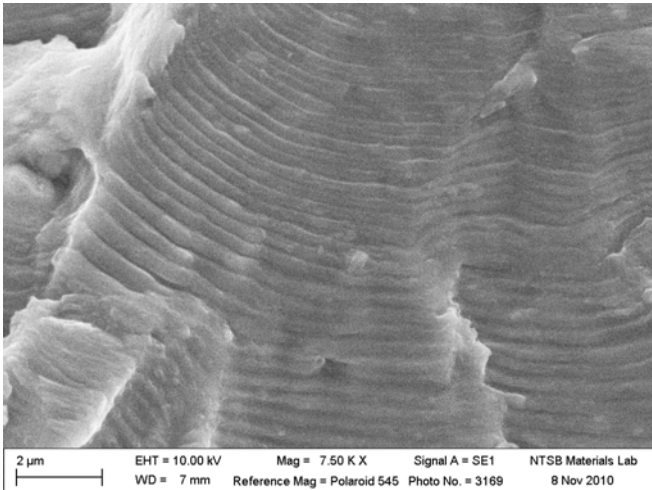
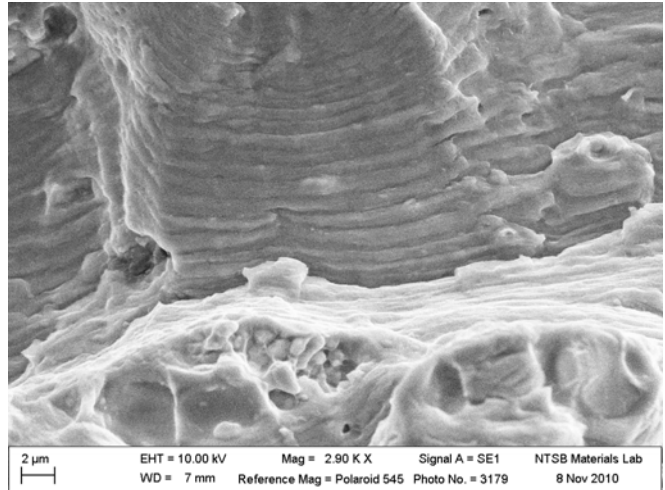
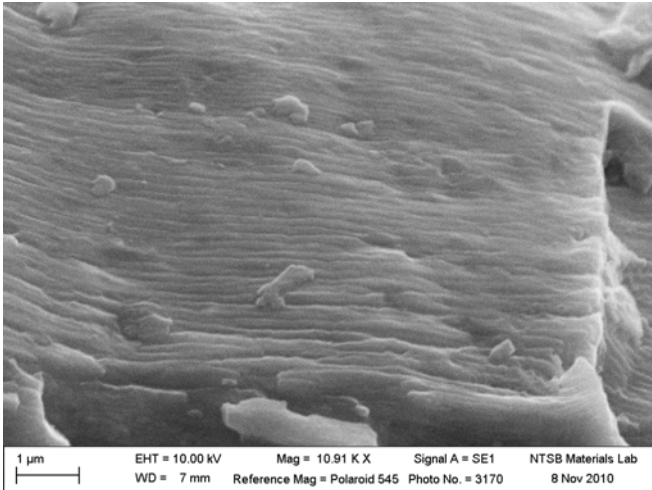


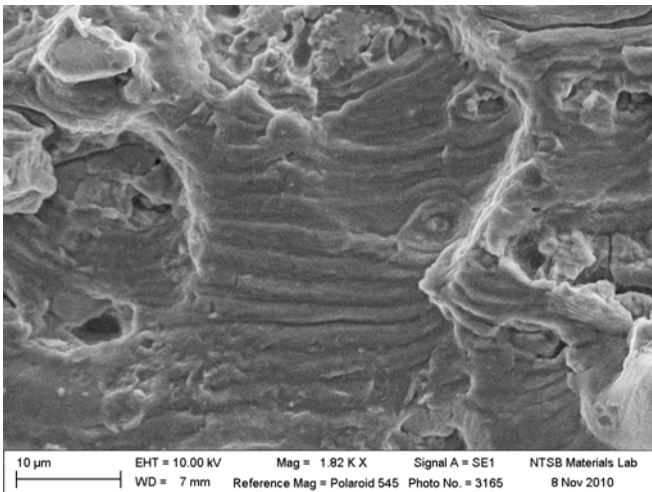
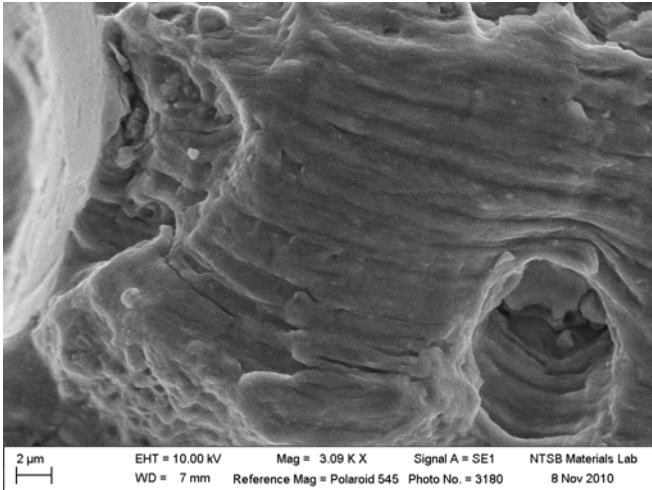


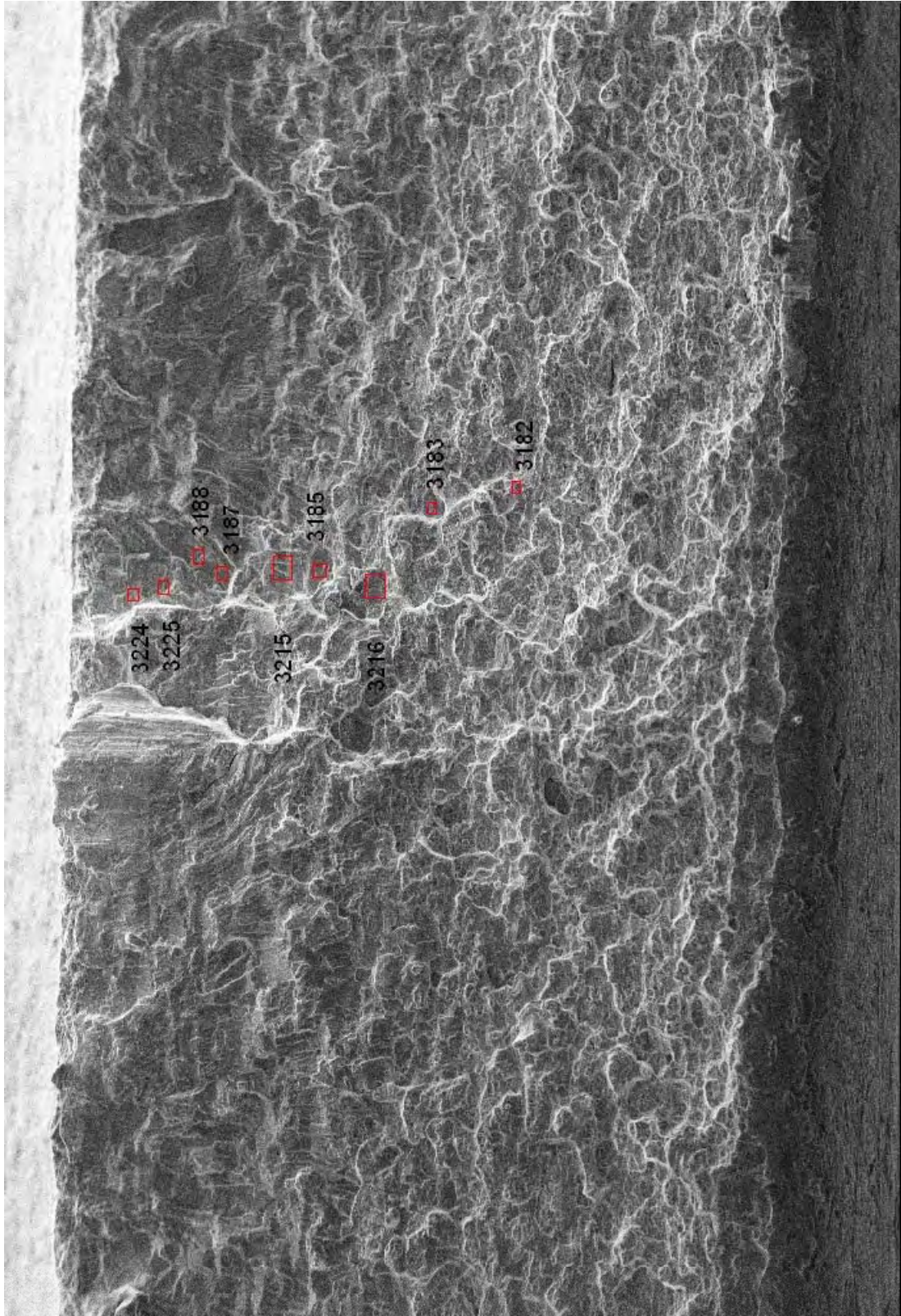


100 μ m | EHT = 10.00 kV | Mag = 77 X | Signal A = SE1 | NTSB Materials Lab
WD = 7 mm | Reference Mag = Polaroid 545 | Photo No. = 3162 | 8 Nov 2010

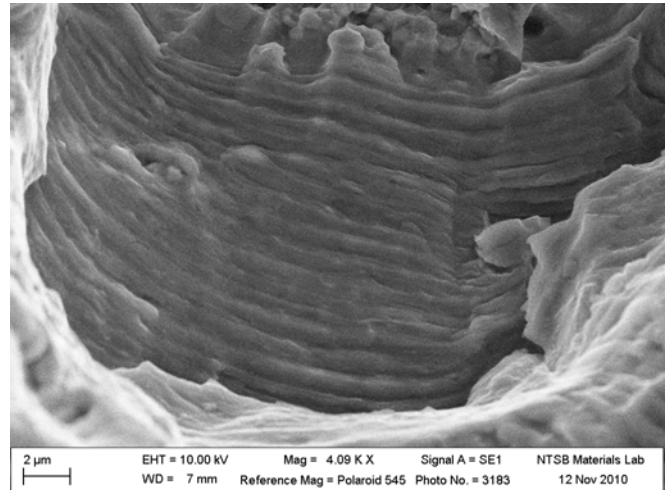
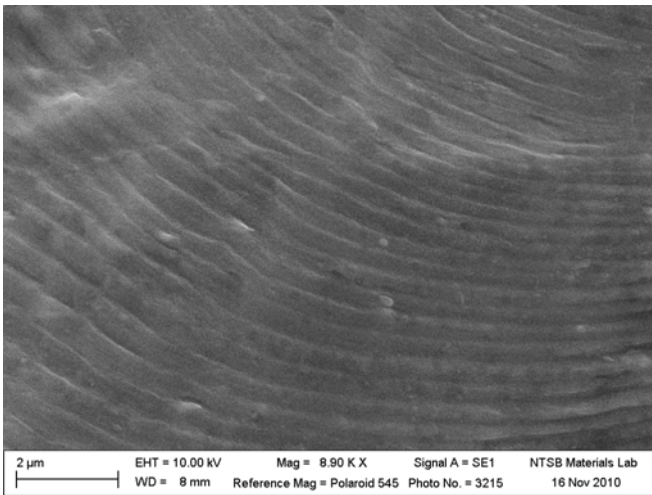
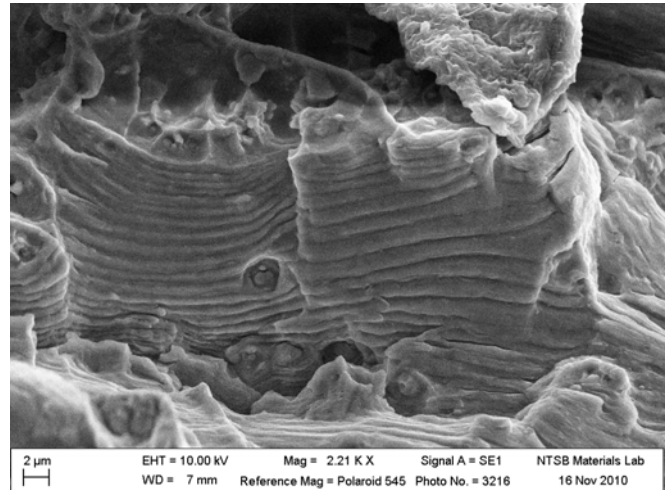
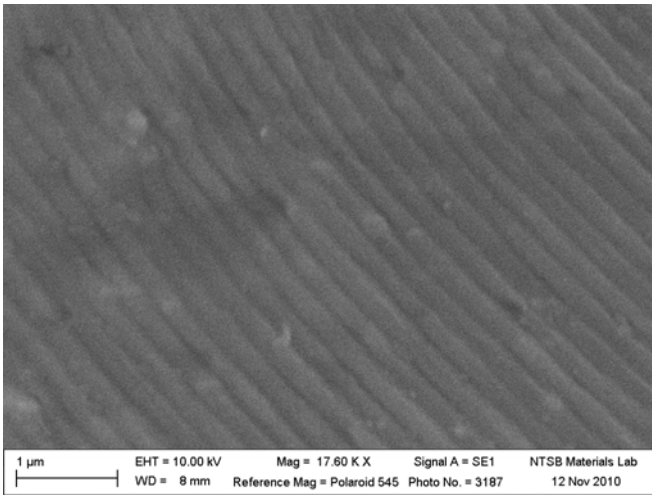
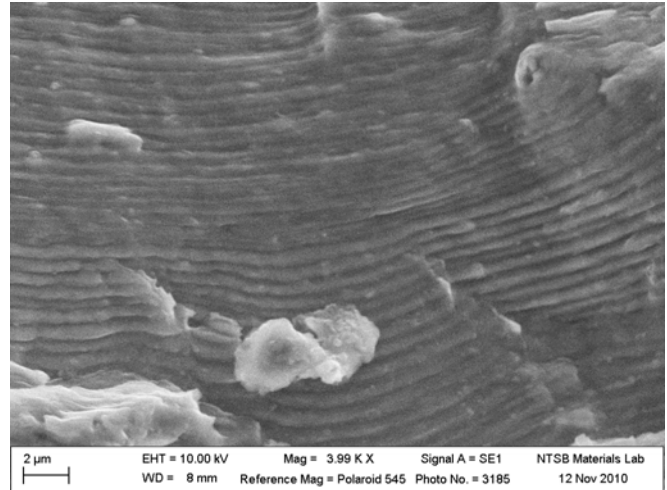
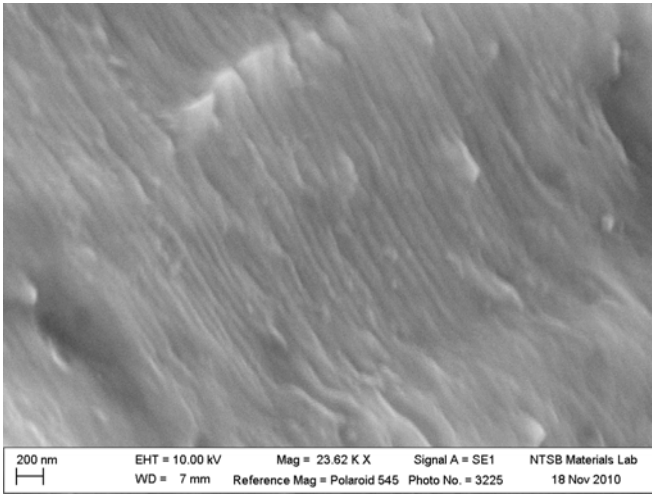


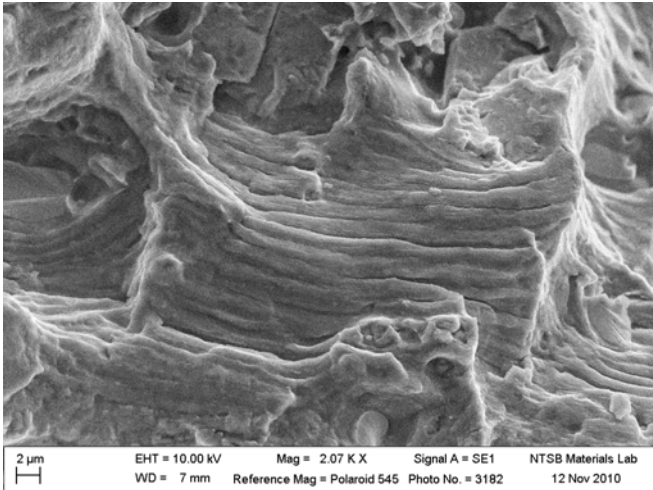


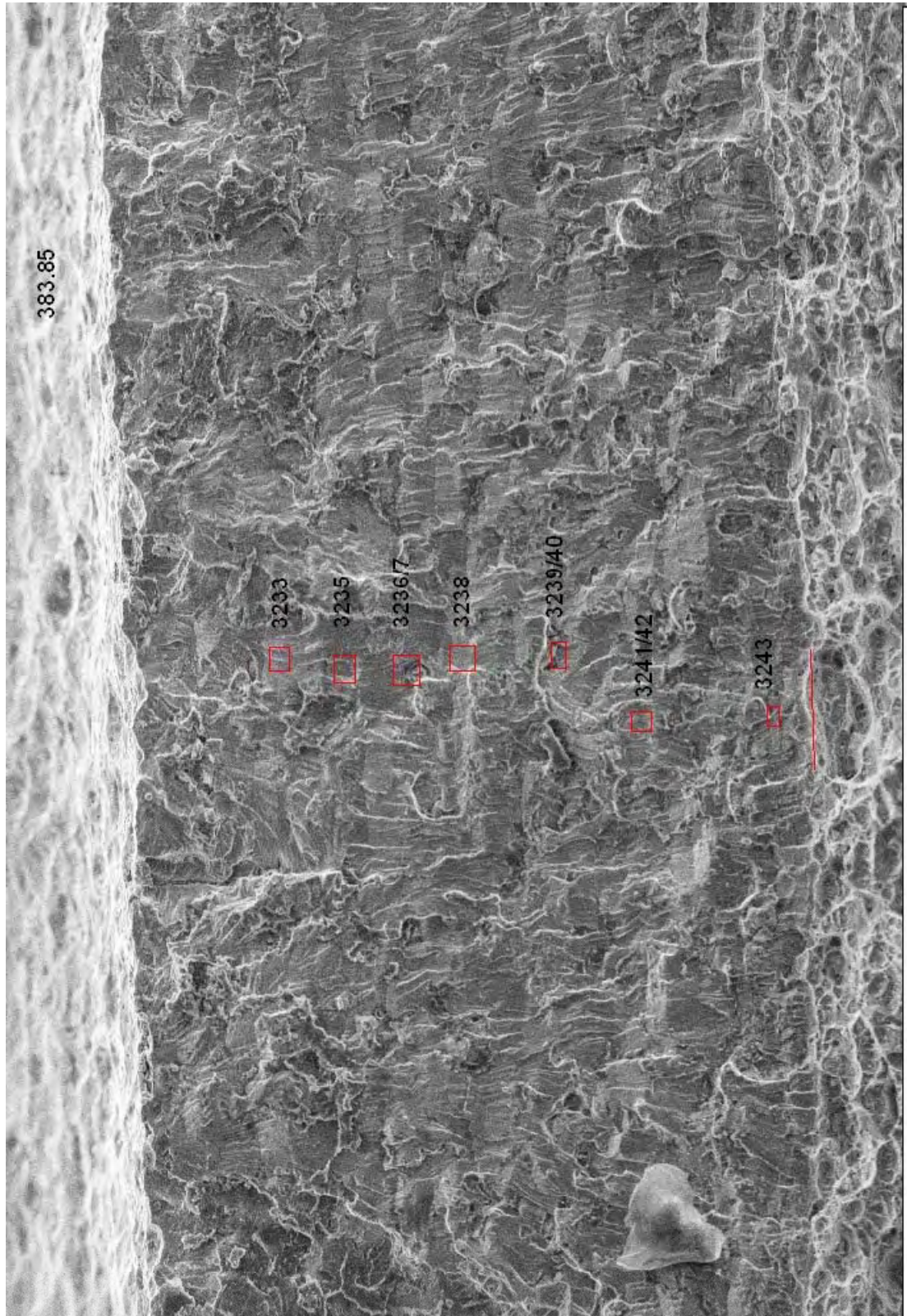


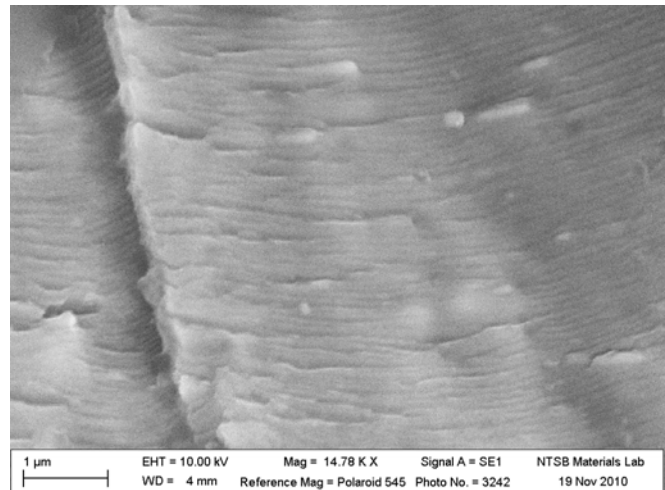
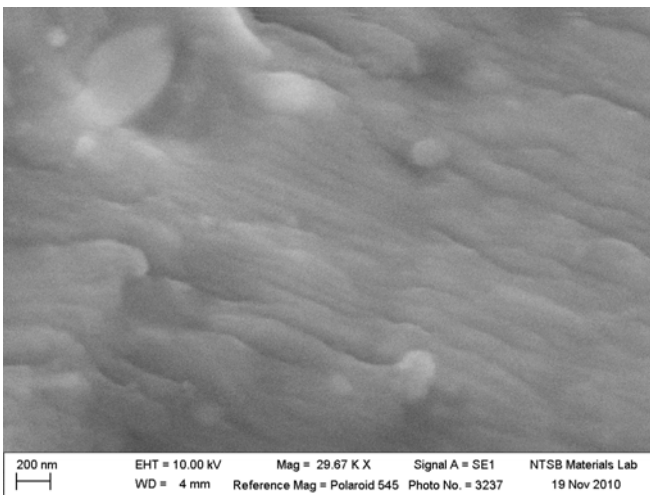
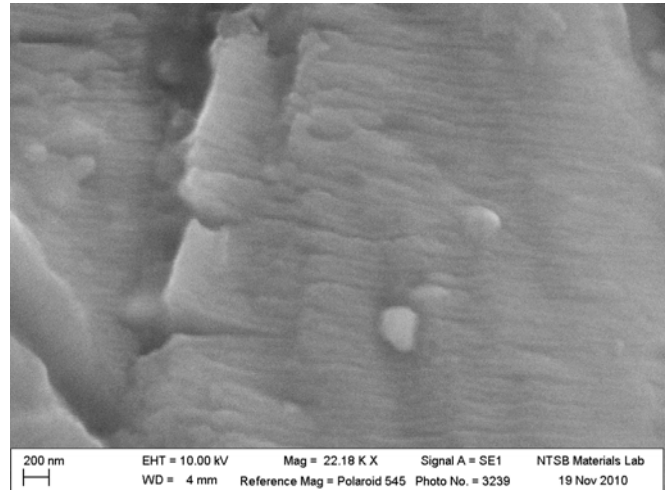
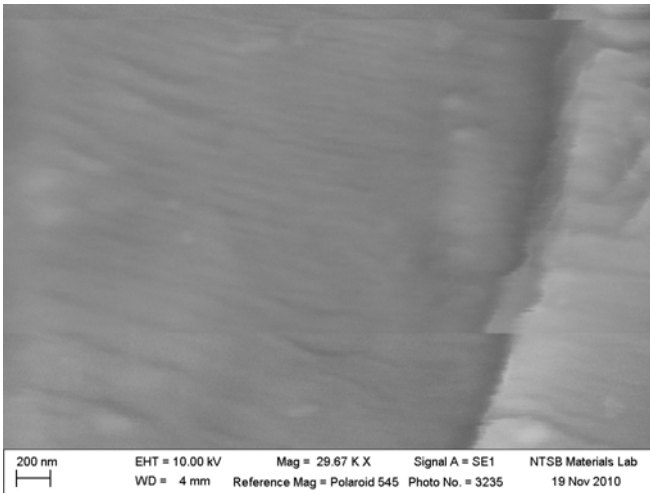
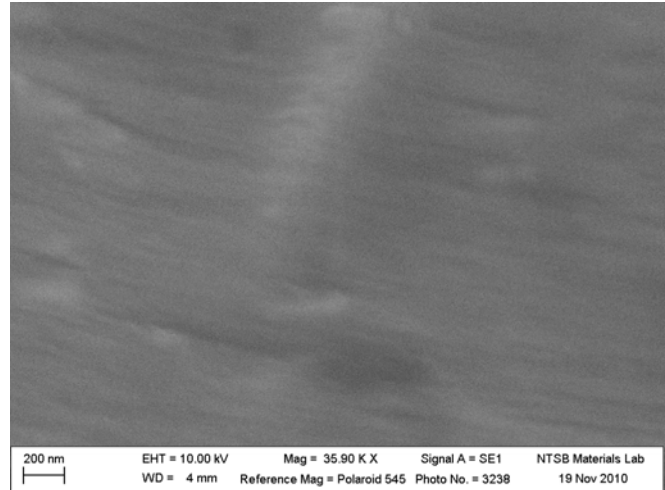
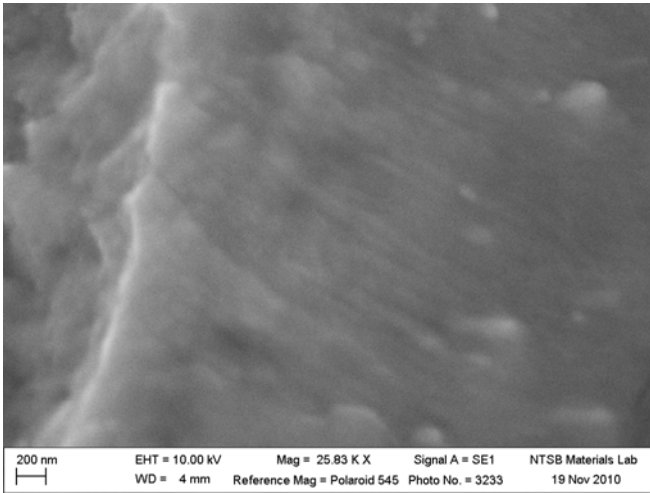


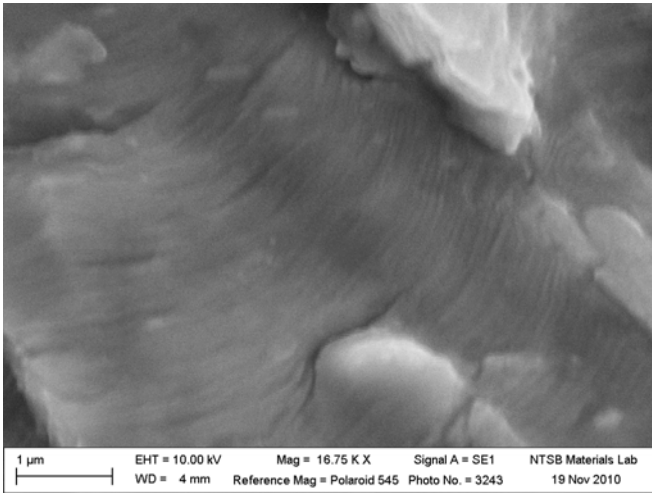
100 µm | EHT = 10.00 kV | Mag = 79 X | Signal A = SE1 | NTSB Materials Lab
WD = 7 mm | Reference Mag = Polaroid 545 | Photo No. = 3181 | 12 Nov 2010

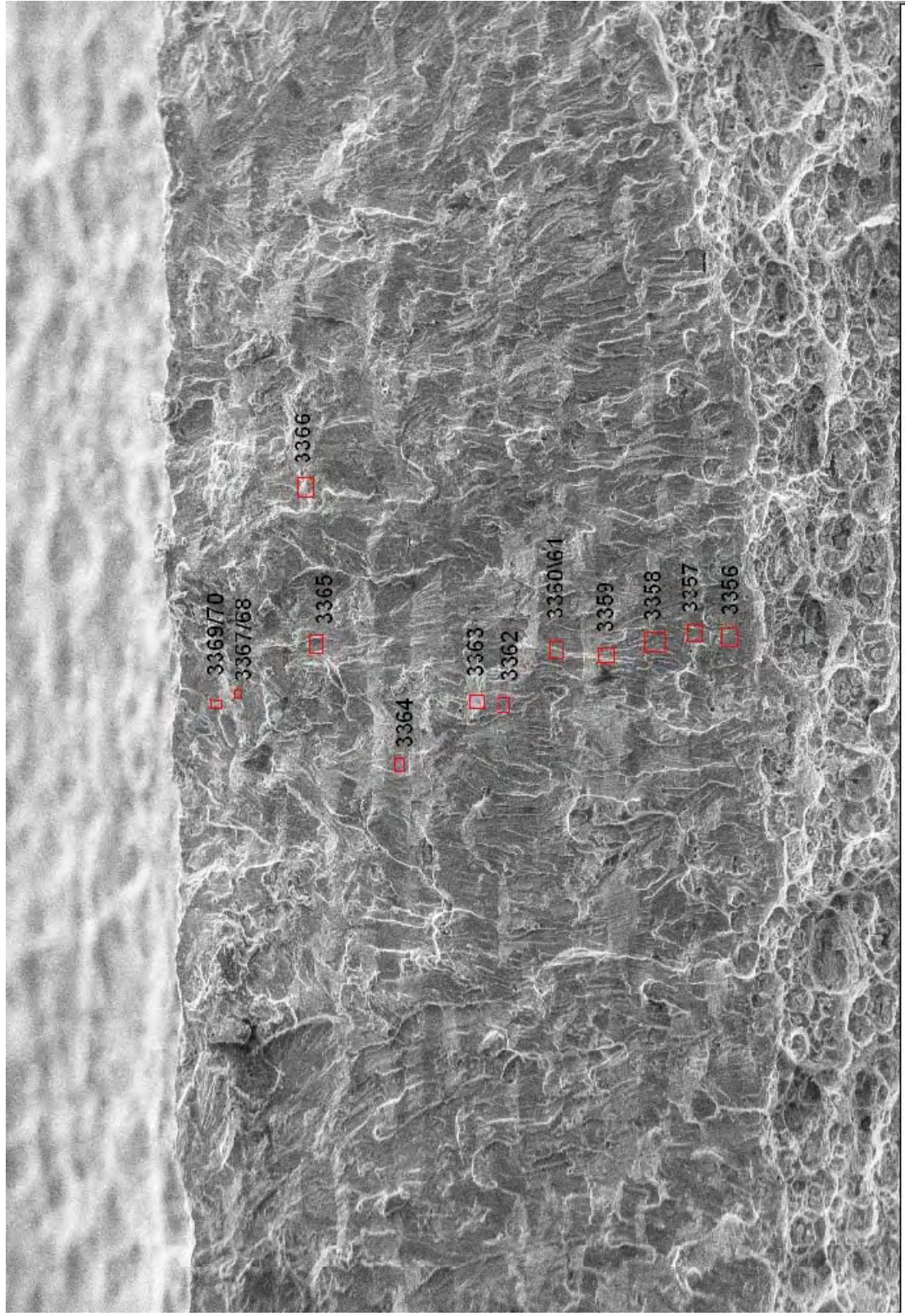












100 µm | EHT = 8.60 kV | Mag = 132 X | Signal A = SE1 | NTSB Materials Lab
WD = 6 mm | Reference Mag = Polaroid 545 | Photo No. = 3355 | 3 Jan 2011

