

WAAS CH <b>45627</b> <b>W16A</b>	APP CRS <b>161°</b>	Rwy Idg TDZE Apt Elev	<b>5001</b> <b>643</b> <b>647</b>
--	------------------------	-----------------------------	---

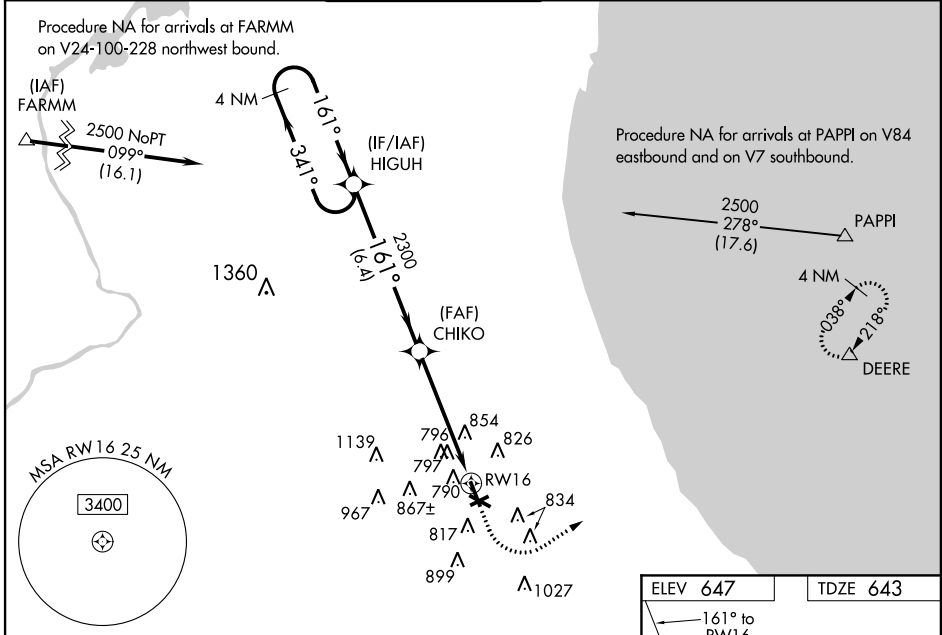
# RNAV (GPS) RWY 16

CHICAGO EXECUTIVE (PWK)

**⚠** Night landing: Rwy 6, 12, 24 NA. For uncompensated Baro-VNAV systems, LNAV/VNAV NA below -16°C (4°F) or above 39°C (102°F). DME/DME RNP-0.3 NA. Helicopter visibility reduction below 3/4 SM NA. When local altimeter setting not received, use Chicago O'Hare Intl altimeter setting and increase all DA 22 feet and all MDA 40 feet and increase LPV all Cats visibility 1/8 mile, LNAV Cats C and D visibility 1/4 mile, and Circling Cat C visibility 1/8 mile. Baro-VNAV NA with Chicago O'Hare Intl altimeter setting. VDP NA when using Chicago O'Hare Intl altimeter setting.

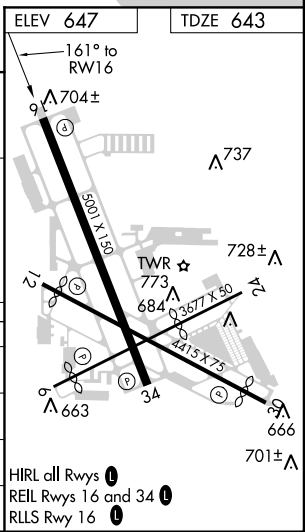
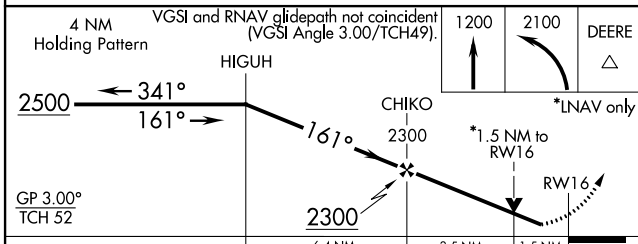
**MISSED APPROACH:**  
Climb to 1200 then climbing left turn to 2100 direct DEERE and hold.

ATIS <b>124.2</b>	CHICAGO APP CON <b>120.55 306.925</b>	EXECUTIVE TOWER * <b>119.9 (CTAF) 0</b>	GND CON <b>121.7</b>	CLNC DEL <b>124.7</b>	UNICOM <b>122.95</b>
----------------------	--	--	-------------------------	--------------------------	-------------------------



EC-3, 04 FEB 2016 to 03 MAR 2016

EC-3, 04 FEB 2016 to 03 MAR 2016



CATEGORY	A	B	C	D
LPV DA	893-1 250 (300-1)			
LNAV/VNAV DA	1087-1½ 444 (500-1½)			
LNAV MDA	1160-1	517 (600-1)	1160-1⅓	517 (600-1⅓)
CIRCLING	1160-1	513 (600-1)	1160-1½ 513 (600-1½)	1200-2 553 (600-2)