

DOOR WARNING – DESCRIPTION AND OPERATION

1. Description (Figure 1)

The passenger/crew door warning system in the flight compartment consists of two amber lights and a green light. The amber lights indicate that the door is unlocked and not ready; the green light indicates a door ready condition. The amber unlocked and not ready conditions activate the master caution system causing the amber DOORS annunciator to come on and the master caution lights to flash.

Proximity switches are mounted at each door latch. These switches, together with a proximity switch on the external door handle, cause the passenger/crew door UNLOCKED light to go out when the latches are in the fully latched position and the external handle is stowed. A proximity switch on the inner lever causes the passenger/crew door NOT RDY light to go out when the inner lever is stowed. Microswitches in a separate circuit sense when the inner lever and external handle are stowed. A green passenger/crew door READY light comes on to indicate that the external handle and T-handle are stowed.

The baggage door indicating system consists of one amber light located on the door warning lights and cabin signs switch panel on the centre console. The light indicates DOOR UNSAFE, activating the master caution system causing the amber DOORS annunciator to come on and the master caution lights to flash. Two proximity switches are installed on the front and rear baggage door frames.

2. Operation

A. Passenger/Crew Door Not Ready Light

The PASS DR NOT RDY amber light comes on if the door T-handle is not stowed.

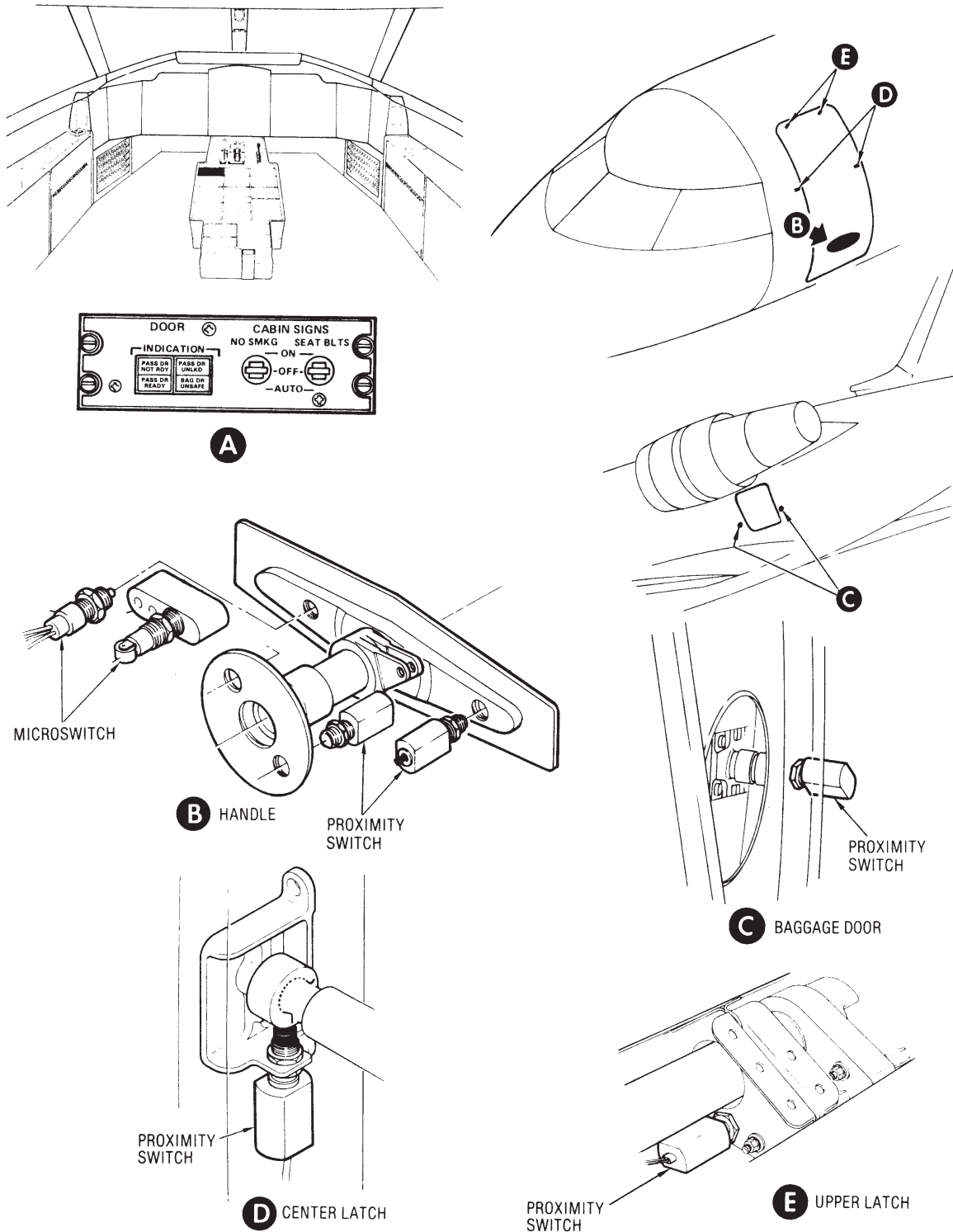
B. Passenger/Crew Door Ready Light

The PASS DR READY green light comes on when both the following microswitches are made:

Door external handle stowed switch.

Door T-handle stowed switch.

**EFFECTIVITY:**  
 All aircraft except 5041 and  
 CAA Certified Aircraft



Door Warning  
 Figure 1

EFFECTIVITY: All aircraft except 5041  
 and CAA Certified Aircraft

C. Passenger/Crew Door Unlocked Light

The PASS DR UNLKD amber light comes on if any of the following situations exists:

Door external handle not locked and stowed.

Door centre forward latch not engaged.

Door centre rear latch not engaged.

Door upper forward latch not engaged.

Door upper rear latch not engaged.

D. Baggage Door Unsafe Light

The BAG DR UNSAFE light comes on if either of the two locking plungers are not fully engaged.