

**Docket No. SA-521**

**Exhibit No. 17-D**

**NATIONAL TRANSPORTATION SAFETY BOARD**

**Washington, D. C.**

Fleet Campaign Directive A27-7, Original

(4 Pages)

### EMERY WORLDWIDE AIRLINES FLEET CAMPAIGN DIRECTIVE

No. A27-7

Issue  
Date: 2-16-01

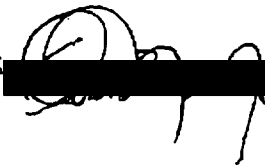
Rev. Original

Task Code: 827310

Title: Elevator Push/Pull Rod End Bolt  
Installation Inspection.

Reference: IPC 27-30-01 -020 FN 90  
DC-8 M/M 27-30-XX

Compliance Requested:  
Complete entire fleet no later than 2-26-01

Approved by: 

Manpower:  
2 Man Hours

Equipment Affected:  
EWA DC-8 Fleet

Priority:  
Mandatory

Publications Affected:  
N/A

Weight Change:  
N/A

### EMERY WORLDWIDE AIRLINES FLEET CAMPAIGN DIRECTIVE

Page 2 of 4  
No. A27-7  
Rev. Original

**Introduction:**

Due to the possibility of incorrectly installed parts on the elevator push/pull rod assembly an inspection of the rod assembly is called for. This FCD inspects the rod ends for proper installation of the bolt, washer, nut, and cotter pin.

**ACCOMPLISHMENT INSTRUCTIONS:**

**Warning:** To avoid injury to maintenance personnel or damage to equipment, make certain adequate precautions are taken while performing any work if electrical power is applied to the aircraft.

**Caution:** Electrically ground the aircraft.

**Work Instructions:**

- 1. Make sure that horizontal stabilizer is in neutral position. M
- 2. Move gust lock control lever (Located on Pilot's control pedestal) to locked position. M

**Note:** If any incorrect installations are found, record why it is incorrect as per step 6, then reinstall correctly.

- 3. Gain access to elevator control tab pushrod installation as required for inspection of forward and aft rod ends. M
- 4. Inspect forward end of elevator pushrod, connected to crank and verify that the bolt, washer, nut, and cotter pin are installed correctly. I - Right Hand  
I - Left Hand

### EMERY WORLDWIDE AIRLINES FLEET CAMPAIGN DIRECTIVE

Page 3 of 4  
No. A27-7  
Rev. Original

- 5. Inspect aft end of elevator pushrod, connected to elevator control tab, and verify that the bolt, washer, nut, and cotter pin are installed correctly.

I - Right Hand
I - Left Hand

- 6. Record all inspection findings on Aircraft Maintenance Log. Indicate whether or not the installation was correct, and if incorrect indicate why.

I
---

EWA Quality Control Dept.  
 Attn: Director of Quality Control  
 Fax: 937-415-7960

- 7. Close up panels that were opened to gain access to pushrod installation.

M
---

- 8. Make a logbook entry indicating compliance with this FCD.

M
---

A/C \_\_\_\_\_ Date \_\_\_\_\_

Station \_\_\_\_\_ Employee # \_\_\_\_\_

Log Book \_\_\_\_\_

# EMERY WORLDWIDE AIRLINES FLEET CAMPAIGN DIRECTIVE

Page 4 of 4  
No. A27-7  
Rev. Original

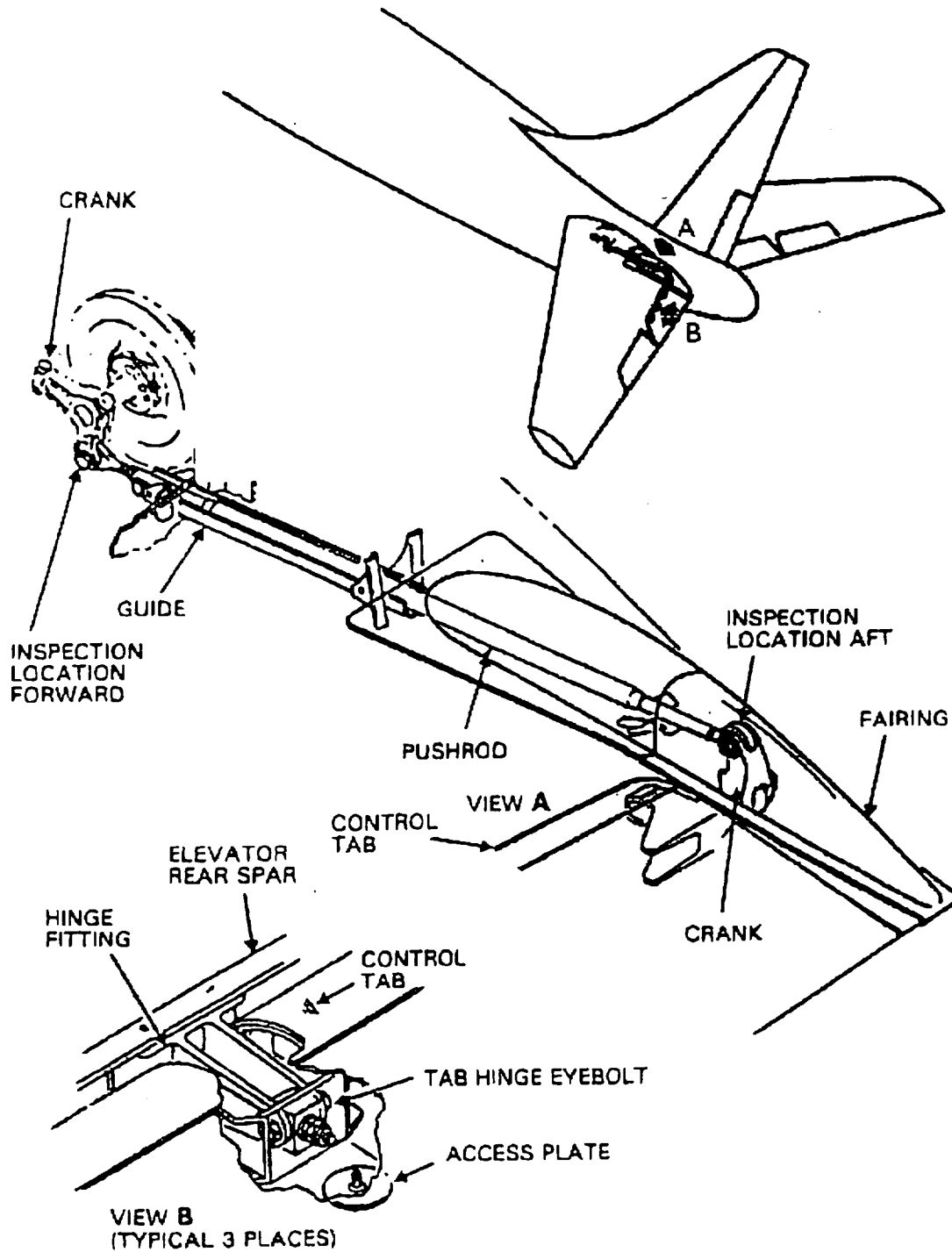


Figure 1 - Elevator Control Tab (Installation)