

Attachment 16. Torque Stripe Training

DCA12MA020 Maintenance Factual Report

Inspector Recurrent Training

Quality Alert Notice



To: All Maintenance Personnel
From: Quality Assurance Department
Date: 01/27/2011
QAN Number: 02-11
Subject: Additional Item Requiring an Inspector.

Do to recent event involving an unsecured oil line, an additional inspector requirement has been added to the existing items as stated in the company GMM page 72 para. 7.3.2 items 1. a thru e to be inspected prior to return to service.

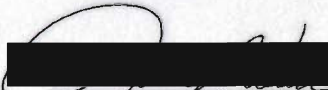
Existing Requirements;

- a. All maintenance functions requiring a safety. (safety wire, cotter pin etc.)
- b. Prior to installation of cowlings or panels that would cover a safety or work procedure.
- c. Any maintenance procedure involving a flight control or drive train assembly.
- d. Reassembly of a component.
- e. Installation of engines, main gearbox or tail rotor gearbox.

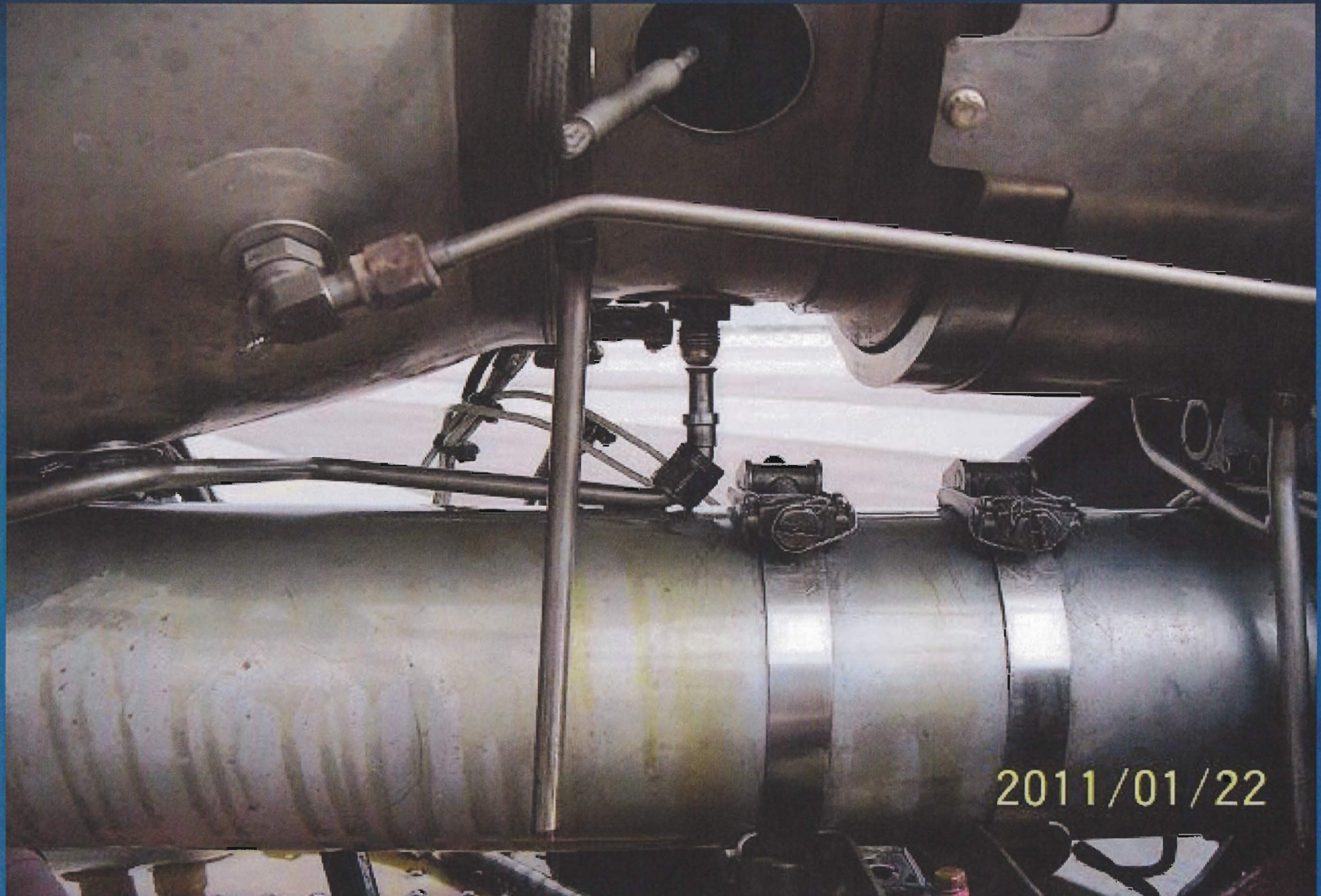
Additional Requirement;

- f. Installation of all fuel lines, hydraulic lines and oil lines. (Rigid or Flexible)

This additional requirement becomes effective immediately.


Jack L. Weese
Manager Quality Assurance

Inspector Recurrent Training



Inspector Recurrent Training

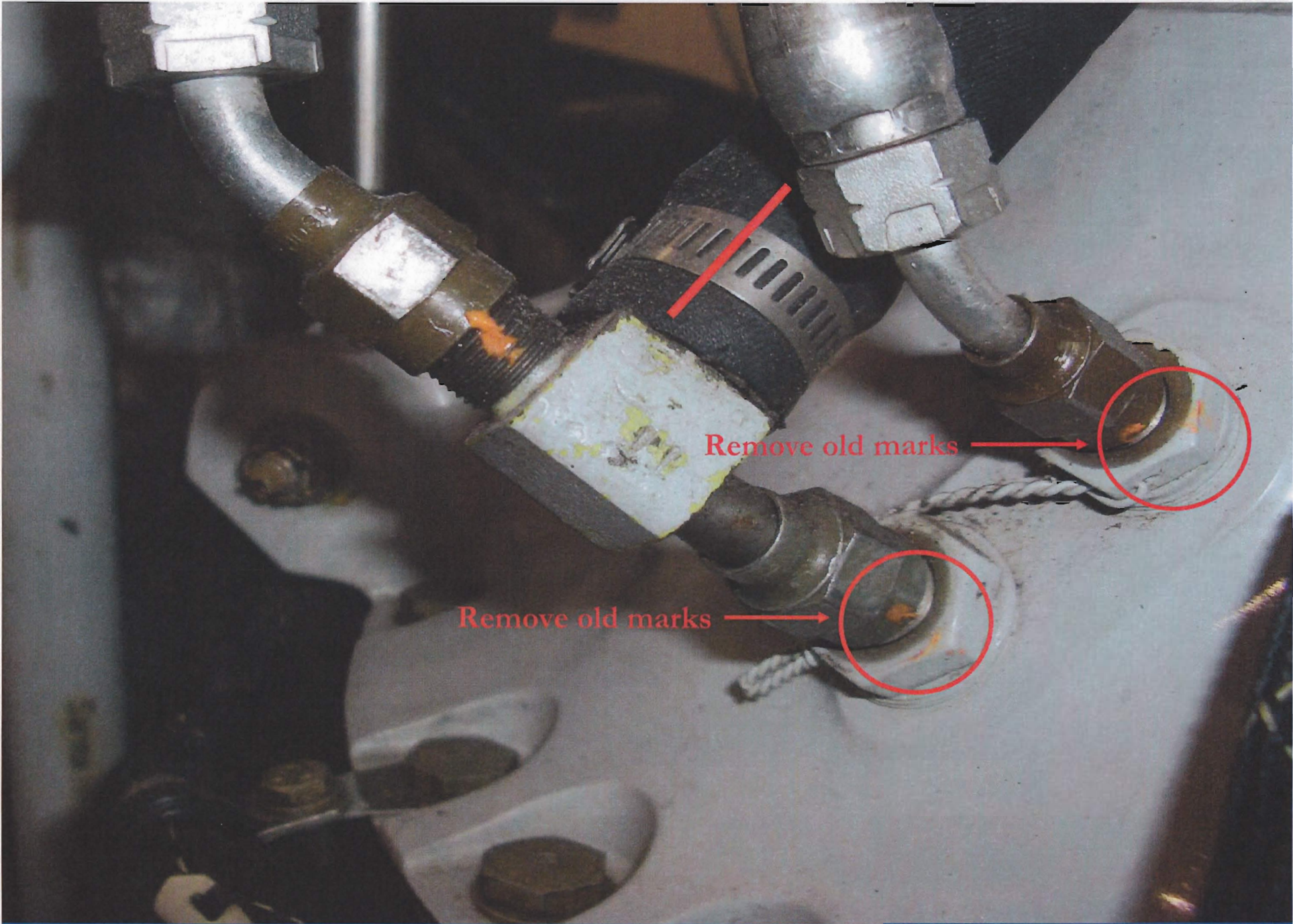
When performing inspection for installation of all lines, ridged or flexible, verify that the line or hose has been properly routed, does not rub on or interfere with other components and is properly tightened. The inspector will either witness the torque or apply torque himself to verify, then apply the appropriate marking. Prior to marking ensure all old reference markings have been removed.

All safeties will be marked with inspection paint. All line connectors will be marked with inspector paint to include hose clamps.

Each inspector will be issued a specific color and will be responsible for securing his assigned paint pen.

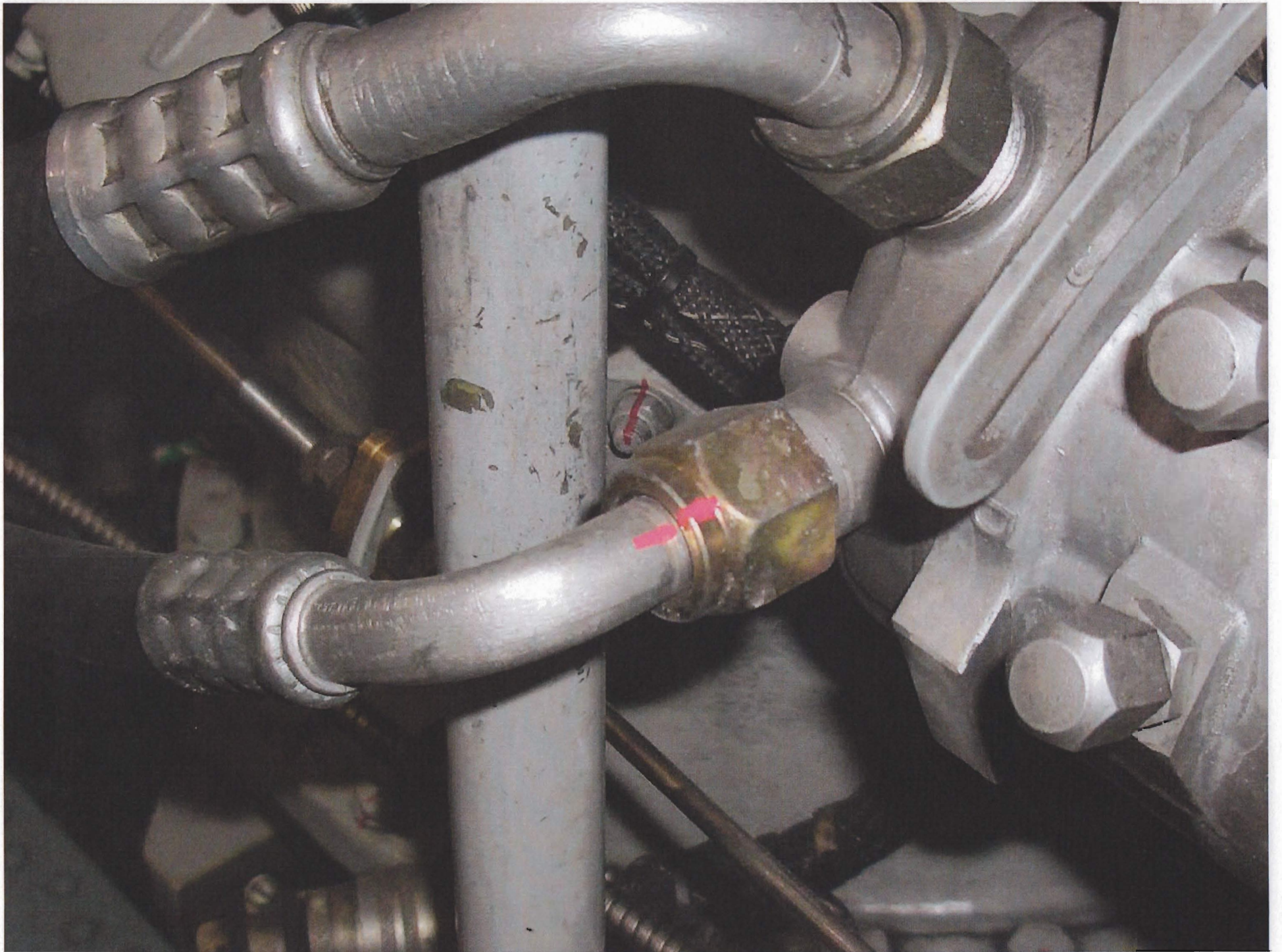
NOTE

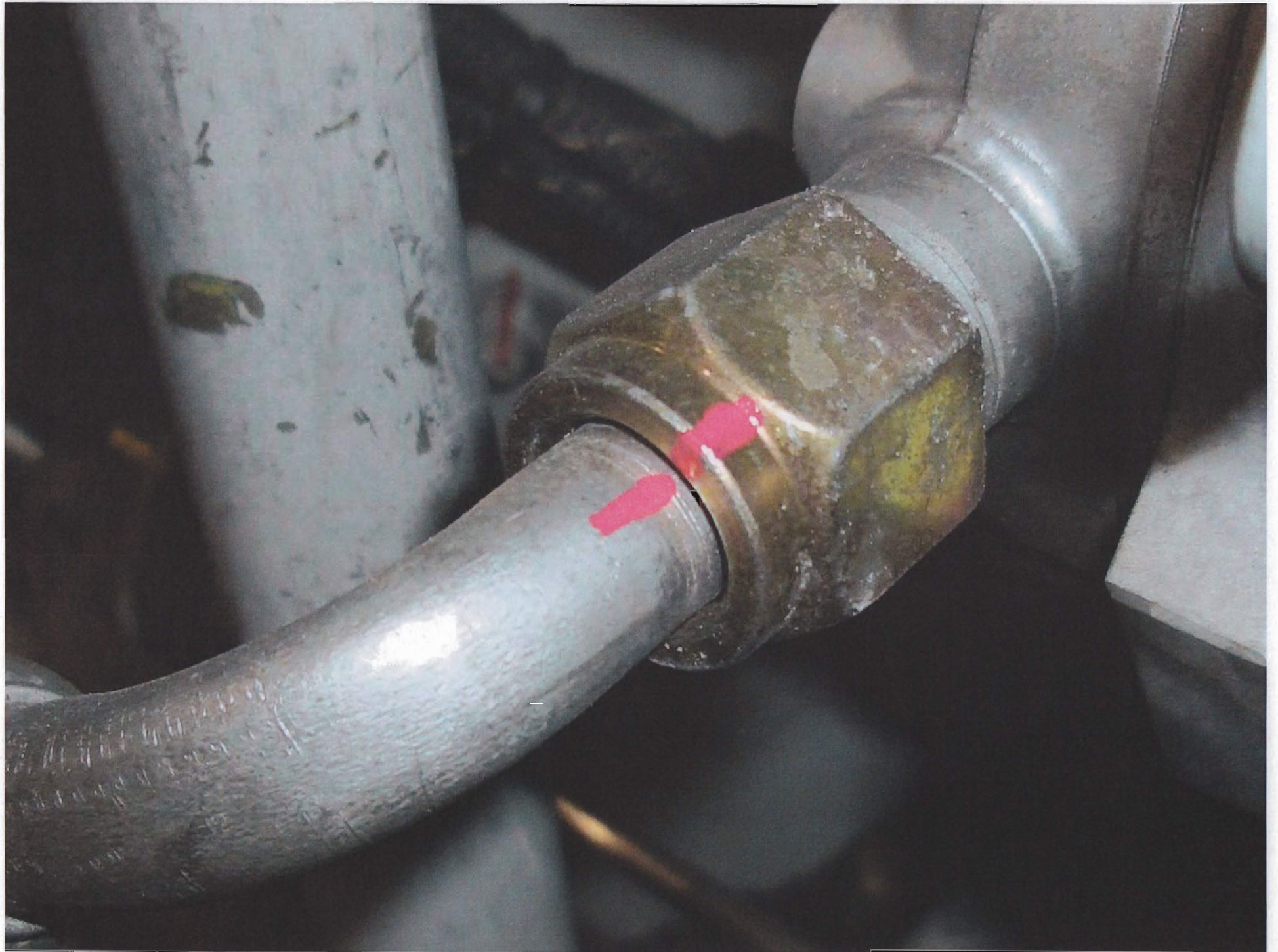
This procedure applies to maintenance performed from this date on. You are not required to mark existing safeties.

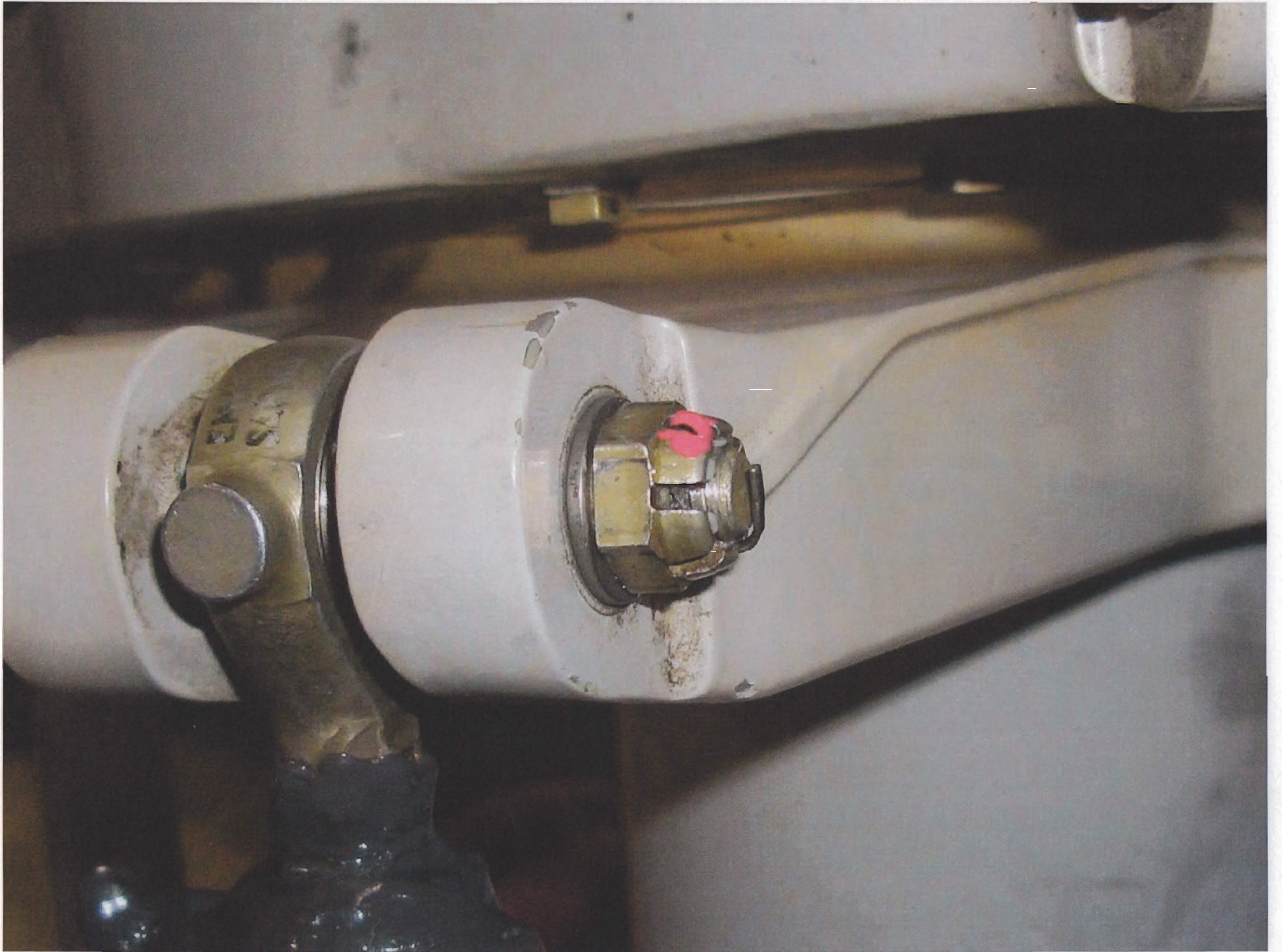


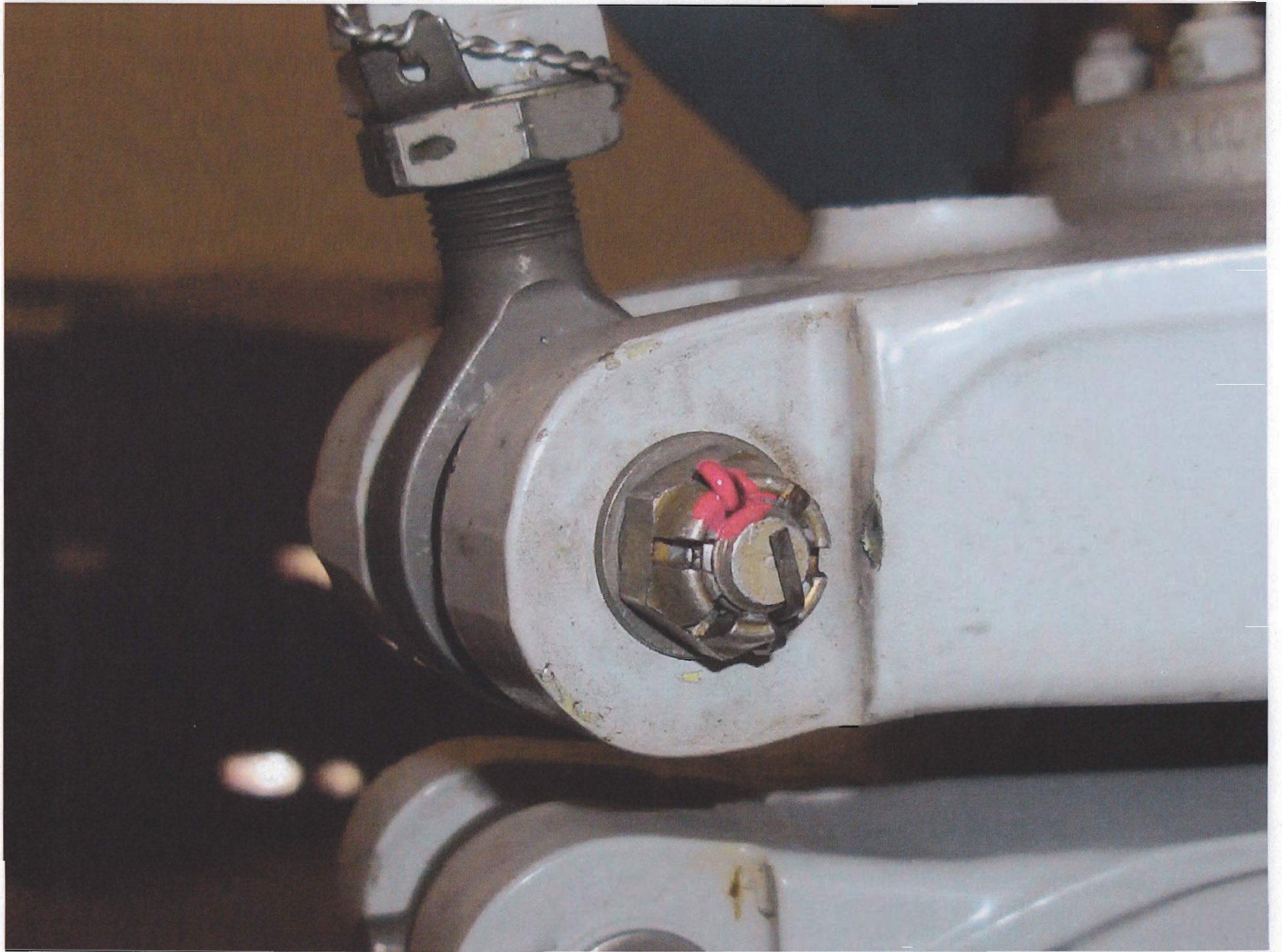
Remove old marks

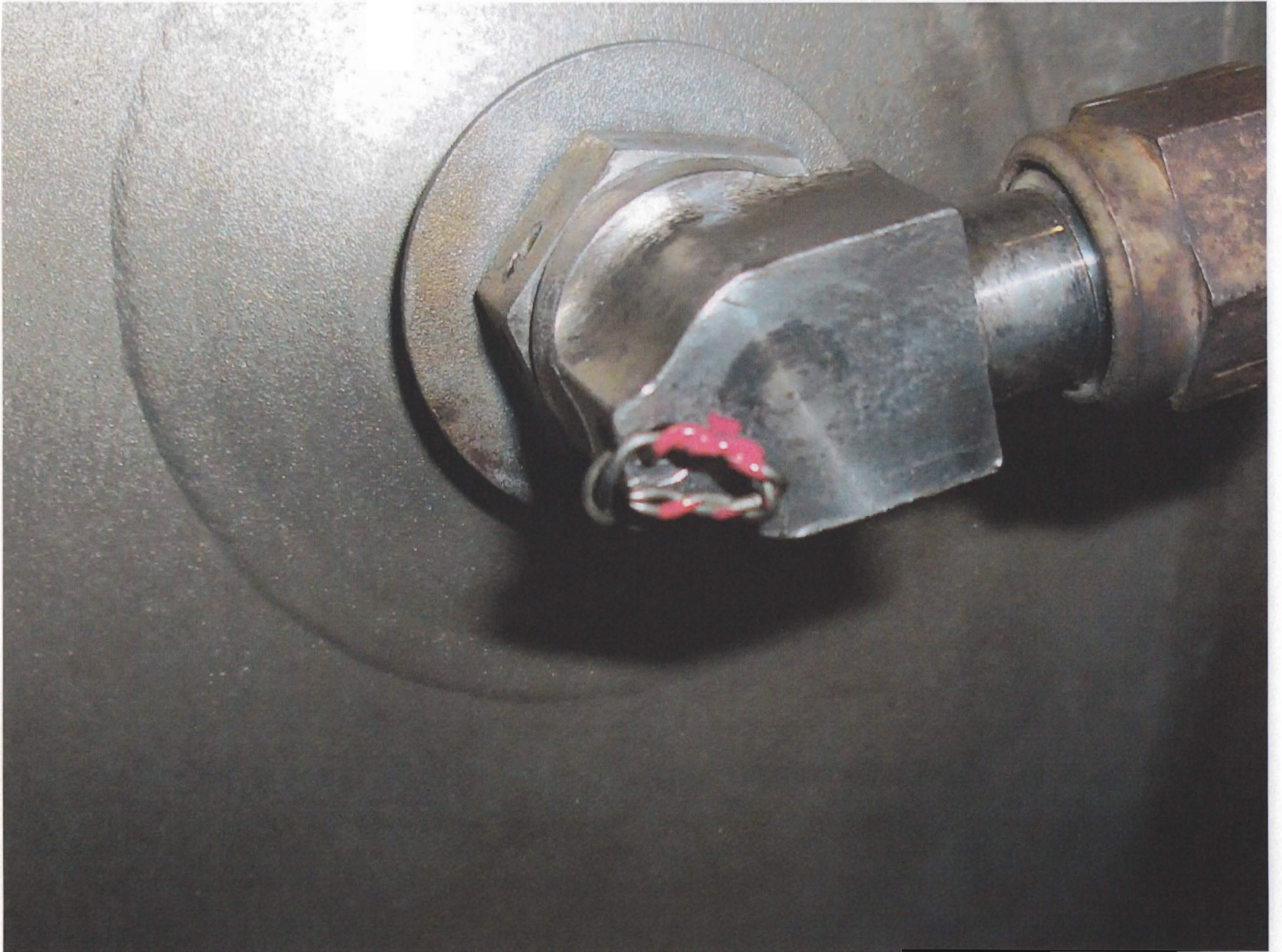
Remove old marks







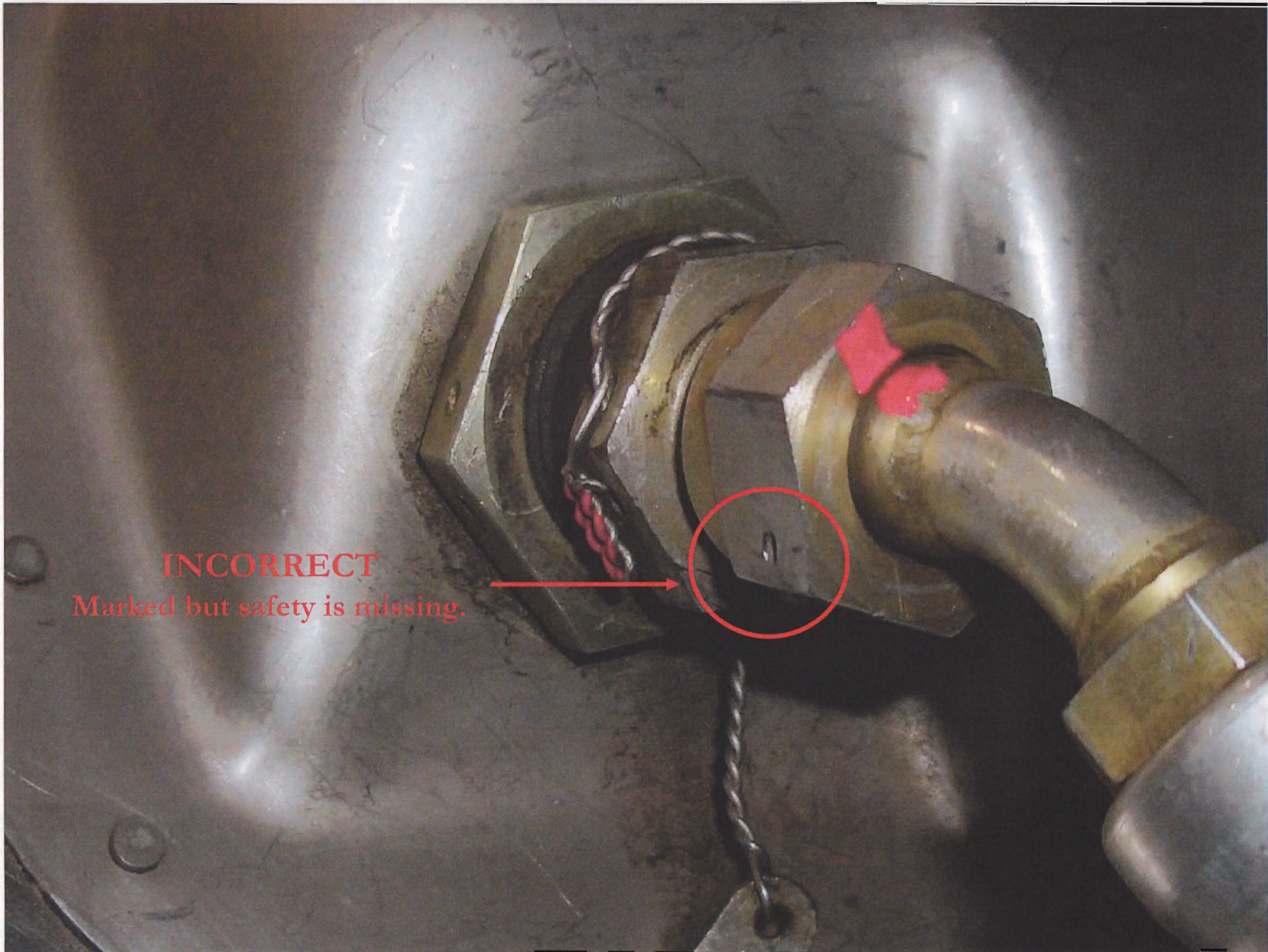






Mark this type of fitting to indicate any rotation.





INCORRECT
Marked but safety is missing.

ATTENTION :

Effectuer le précharge
Azote avant la mise
en pression hydraulique

CAUTION :

Please precharge
Nitrogen before
hydraulic pressure
of the system.

VA HSNA
035 (0408)
6702
WOF

RF