

ATTACHMENT #1A

GST COMPANY INFORMATION

(16 Pages)

• USDOT Number MC/MX Number Name

Enter Value: 965318

Search

Company Snapshot

GST TRANSPORT CORP

USDOT Number: 965318

ID/Operations | [Inspections/Crashes In US](#) | [Inspections/Crashes In Canada](#) | [Safety Rating](#)

Carriers: If you would like to update the following ID/Operations information, please complete and submit form [MCS-150](#) which can be obtained [online](#) or from your State FMCSA office. If you would like to challenge the accuracy of your company's safety data, you can do so using FMCSA's [DataQs](#) system.

Other Information for this Carrier

▼ [SMS Results](#)

▼ [Licensing & Insurance](#)

Carrier and other users: FMCSA provides the Company Safety Profile (CSP) to motor carriers and the general public interested in obtaining greater detail on a particular motor carrier's safety performance than what is captured in the Company Snapshot. To obtain a CSP please visit the [CSP order page](#) or call (800)832-5660 or (703)280-4001 (Fee Required).

For help on the explanation of individual data fields, click on any field name or for help of a general nature go to [SAFER General Help](#).

The information below reflects the content of the FMCSA management information systems as of 02/17/2012.

Entity Type:	Carrier																																
Operating Status:	NOT AUTHORIZED	Out of Service Date:	None																														
Legal Name:	GST TRANSPORT CORP																																
DBA Name:																																	
Physical Address:	1897 ROUTE 38 SOUTHAMPTON, NJ 08088																																
Phone:	(609) 267-3380																																
Mailing Address:	1897 ROUTE 38 SOUTHAMPTON, NJ 08088																																
USDOT Number:	965318	State Carrier ID Number:																															
MC or MX Number:		DUNS Number:	--																														
Power Units:	242	Drivers:	239																														
MCS-150 Form Date:	06/25/2009	MCS-150 Mileage (Year):	4,317,958 (2008)																														
Operation Classification:																																	
<table border="0"> <tr> <td>Auth. For Hire</td> <td>Priv. Pass.(Non-business)</td> <td>State Gov't</td> </tr> <tr> <td>X Exempt For Hire</td> <td>Migrant</td> <td>Local Gov't</td> </tr> <tr> <td>Private(Property)</td> <td>U.S. Mail</td> <td>Indian Nation</td> </tr> <tr> <td>Priv. Pass. (Business)</td> <td>Fed. Gov't</td> <td></td> </tr> </table>				Auth. For Hire	Priv. Pass.(Non-business)	State Gov't	X Exempt For Hire	Migrant	Local Gov't	Private(Property)	U.S. Mail	Indian Nation	Priv. Pass. (Business)	Fed. Gov't																			
Auth. For Hire	Priv. Pass.(Non-business)	State Gov't																															
X Exempt For Hire	Migrant	Local Gov't																															
Private(Property)	U.S. Mail	Indian Nation																															
Priv. Pass. (Business)	Fed. Gov't																																
Carrier Operation:																																	
<table border="0"> <tr> <td>X Interstate</td> <td>Intrastate Only (HM)</td> <td>Intrastate Only (Non-HM)</td> </tr> </table>				X Interstate	Intrastate Only (HM)	Intrastate Only (Non-HM)																											
X Interstate	Intrastate Only (HM)	Intrastate Only (Non-HM)																															
Cargo Carried:																																	
<table border="0"> <tr> <td>General Freight</td> <td>Liquids/Gases</td> <td>Chemicals</td> </tr> <tr> <td>Household Goods</td> <td>Intermodal Cont.</td> <td>Commodities Dry Bulk</td> </tr> <tr> <td>Metal: sheets, coils, rolls</td> <td>X Passengers</td> <td>Refrigerated Food</td> </tr> <tr> <td>Motor Vehicles</td> <td>Oilfield Equipment</td> <td>Beverages</td> </tr> <tr> <td>Drive/Tow away</td> <td>Livestock</td> <td>Paper Products</td> </tr> <tr> <td>Logs, Poles, Beams, Lumber</td> <td>Grain, Feed, Hay</td> <td>Utilities</td> </tr> <tr> <td>Building Materials</td> <td>Coal/Coke</td> <td>Agricultural/Farm Supplies</td> </tr> <tr> <td>Mobile Homes</td> <td>Meat</td> <td>Construction</td> </tr> <tr> <td>Machinery, Large Objects</td> <td>Garbage/Refuse</td> <td>Water Well</td> </tr> <tr> <td>Fresh Produce</td> <td>US Mail</td> <td></td> </tr> </table>				General Freight	Liquids/Gases	Chemicals	Household Goods	Intermodal Cont.	Commodities Dry Bulk	Metal: sheets, coils, rolls	X Passengers	Refrigerated Food	Motor Vehicles	Oilfield Equipment	Beverages	Drive/Tow away	Livestock	Paper Products	Logs, Poles, Beams, Lumber	Grain, Feed, Hay	Utilities	Building Materials	Coal/Coke	Agricultural/Farm Supplies	Mobile Homes	Meat	Construction	Machinery, Large Objects	Garbage/Refuse	Water Well	Fresh Produce	US Mail	
General Freight	Liquids/Gases	Chemicals																															
Household Goods	Intermodal Cont.	Commodities Dry Bulk																															
Metal: sheets, coils, rolls	X Passengers	Refrigerated Food																															
Motor Vehicles	Oilfield Equipment	Beverages																															
Drive/Tow away	Livestock	Paper Products																															
Logs, Poles, Beams, Lumber	Grain, Feed, Hay	Utilities																															
Building Materials	Coal/Coke	Agricultural/Farm Supplies																															
Mobile Homes	Meat	Construction																															
Machinery, Large Objects	Garbage/Refuse	Water Well																															
Fresh Produce	US Mail																																

US Inspection results for 24 months prior to: 02/17/2012

Total inspections: 6

Note: Total inspections may be less than the sum of vehicle, driver, and hazmat inspections. Go to [Inspections Help](#) for further information.

Inspections:

Inspection Type	Vehicle	Driver	Hazmat
Inspections	4	6	0
Out of Service	0	0	0
Out of Service %	0%	0%	%
Nat'l Average % (2009- 2010)	20.72%	5.51%	4.50%

Crashes reported to FMCSA by states for 24 months prior to: 02/17/2012

Crashes:

Type	Fatal	Injury	Tow	Total
Crashes	0	5	2	7

[ID/Operations](#) | [Inspections/Crashes In US](#) | [Inspections/Crashes In Canada](#) | [Safety Rating](#)

Canadian Inspection results for 24 months prior to: 02/17/2012

Total inspections: 0

Note: Total inspections may be less than the sum of vehicle and driver inspections. Go to [Inspections Help](#) for further information.

Inspections:

Inspection Type	Vehicle	Driver
Inspections	0	0
Out of Service	0	0
Out of Service %	0%	0%

Crashes results for 24 months prior to: 02/17/2012

Crashes:

Type	Fatal	Injury	Tow	Total
Crashes	0	0	0	0

[ID/Operations](#) | [Inspections/Crashes In US](#) | [Inspections/Crashes In Canada](#) | [Safety Rating](#)

The Federal safety rating does not necessarily reflect the safety of the carrier when operating in intrastate commerce.

Carrier Safety Rating:

The rating below is current as of: 02/17/2012

Review Information:

Rating Date:	10/12/2011	Review Date:	10/06/2011
Rating:	Satisfactory	Type:	Compliance Review

GST TRANSPORT CORP**DOT#:965318**

The SMS provides an assessment of a motor carrier's on-road performance and investigation results within the Behavior Analysis and Safety Improvement Categories (BASICS). Assessments cover 24 months of activity and results are updated monthly. For current Motor Carrier Safety Ratings visit [SAFER](#) and for current operating authority and insurance information visit [Licensing and Insurance \(L&I\)](#) system.

NOTE: This Carrier has no current Operating Authority with FMCSA ([click here for details](#)).

Select a BASIC below to view details
View Complete Measurement Profile
BASICS Overview

(Based on a 24-month record ending January 27, 2012)

Unsafe Driving

On-Road Investigation
No Violations

BASICS Status

Fatigued Driving (Hours-of-Service)

No Violations

Driver Fitness

Inconclusive

Controlled Substances and Alcohol

No Violations

Vehicle Maintenance

Insufficient Data

Cargo-Related

Not Public

Crash Indicator

Not Public

History

For more information on the BASICS Overview please visit our [Information Center](#)

ICON LEGEND

Serious violation cited within last 12 months from an investigation.



Denotes this carrier exceeds the FMCSA intervention threshold relative to its safety event grouping based upon roadside data and/or has been cited with one or more serious violations within the past 12 months during an investigation. Therefore, this carrier may be prioritized for an intervention action and roadside inspection.

SUMMARY OF ACTIVITIES

	Number	OOS Rate
Total Inspections:	6	
Vehicle Inspections:	4	0 %
Driver Inspections:	6	0 %
Hazardous Materials Inspections:	0	0 %
HM Placard Inspections:	0	0 %
Total Crashes:	7	
Tow-aways:	7	
Injuries/Fatalities:	5	

RECENT INVESTIGATIONS

The following are up to five most recent investigations:

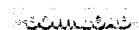
Intervention Type	Date
Compliance Review	10/6/2011
Onsite Comprehensive Investigation	2/25/2011
Non-Ratable Review	7/11/2001

DATA CENTER

Scope:

File Type:

Excel

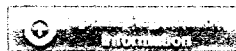
**Carrier Registration Information as of January 27, 2012**


USDOT# 965318 Power Units: 224
 DBA Vehicle Miles Traveled: 4,317,958
 Name: VMT Year: 2008
 Address: 1897 Route 38 Drivers: 239
 Southampton, NJ Carrier Operation: Interstate
 08088
 Telephone: (609) 267-3380 Passenger: Yes
 Fax: (609) 267-3939 Subject to Placardable HM No
 Email: Threshold: No
 Household Goods: No
 New Entrant: No

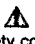
Carrier Registration Information Outdated
 Registration Updated: 06/25/2009
Carrier VMT Outdated

Need more information about what SMS is or how to improve safety in a BASIC?

[Learn More](#)

**USE OF SMS DATA/INFORMATION**

The data in the Safety Measurement System (SMS) is performance data used by the Agency and Enforcement Community. A  symbol, based on that data, indicates that FMCSA may prioritize a motor carrier for further monitoring.

The  symbol is not intended to imply any federal safety rating of the carrier pursuant to 49 USC 31144. Readers should not draw conclusions about a carrier's overall safety condition simply based on the data displayed in this system. Unless a motor carrier in the SMS has received an UNSATISFACTORY safety rating pursuant to 49 CFR Part 385, or has otherwise been ordered to discontinue operations by the FMCSA, it is authorized to operate on the nation's roadways.

4



USDOT# 965318
(As of January 27, 2012)

Factors	Yes/No	Additional Details
1. Inspections in the past 24 months where placardable quantities of HM were found**	No	Number of Inspections: 0
2. Investigations in the past 24 months where the Investigator noted motor carrier transports placardable quantities of HM	No	Investigation Date:
3. Hazardous Materials Safety Permit	No	Type:
Subject to Placardable HM Threshold (Factors 1,2 or 3)*	No	

*To better focus its resources on motor carriers that could substantially elevate the severity of a crash or spill, FMCSA is identifying motor carriers that have exhibited operational evidence of transporting placardable amounts of HM. These motor carriers are subject to more stringent BASIC thresholds for interventions. [Click for more details](#)

Note: It is possible for a motor carrier to transport HM but not be subjected to the more stringent Placardable HM Threshold in cases where FMCSA has no evidence of a motor carrier transporting placardable quantities of HM in the past 24 months.

** To view details of inspections with placardable quantities of HM go to the Data Center, select 'All BASICS' in Scope entry and download the inspections. Then search, filter or sort by the '**HM Placards Required**' field.

SMS Information Center

What are the intervention thresholds for each BASIC?

The intervention threshold percentiles for motor carriers are organized by BASIC and are set based on the BASIC's relationship to crash risk. The intervention thresholds are as follows:

Intervention Thresholds by Motor Carrier Type			
BASIC	General	Placardable Hazardous Materials (HM) Threshold	Passenger Carrier
Unsafe Driving	≥65%	≥60%	≥50%
Fatigued Driving (Hours-of-Service)	65%	60%	50%
Driver Fitness	80%	75%	65%
Controlled Substances and Alcohol	80%	75%	65%
Vehicle Maintenance	80%	75%	65%
Cargo-Related	80%	75%	65%
Crash Indicator	65%	60%	50%

PAPER PRODUCTS
CONSTRUCTION

UTILITY
WATER WELL

FARM SUPPLIES
OTHER

Vehicle Type Breakdown			
Vehicle Type	Owned	Term Leased	Trip Leased
Straight Trucks			
Truck Tractors			
Trailers*			
Hazmat Cargo Tank Trailers*			
Hazmat Cargo Tank Trucks			
Motor Coach			
School Bus 1-8 Passengers	18		
School Bus 9-15 Passengers			
School Bus 16+ Passengers	224		
Mini-Bus 16+ Passengers			
Van 1-8 Passengers			
Van 9-15 Passengers			
Limousine 1-8 Passengers			
Limousine 9-15 Passengers			
Limousine 16+ Passengers			

* Indicates power units not used by the Carrier Safety Measurement System when calculating total power units.

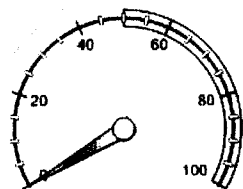
Unsafe Driving

Operation of CMVs by drivers in a dangerous or careless manner. (FMCSR Parts 392 and 397)

BASIC Overall Status

Does not exceed intervention threshold based upon On-road Performance and Investigation Results.

(Based on a 24-month record ending January 27, 2012)

On-road Performance Overview

MEASURE: 0

Safety Event
Grouping

Segment

PERCENTILE:

No Violations

(Threshold: 50%)

Not Applicable




Straight

Average Power Units: 217
Vehicle Miles Traveled (VMT): 5,110,888
VMT Year: 2011 VMT Source: Investigation - MCS151

Average Power Units (APU) x Utilization Factor (UF): 255.5
Total Inspections with Unsafe Driving Violations: 0
Total Unsafe Driving Violations: 0

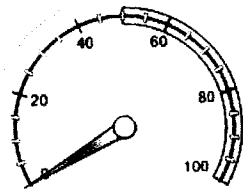
The Unsafe Driving measure/percentile is based on Roadside Inspection reports. Some Unsafe Driving violations are reported when a Roadside Inspection was performed following a traffic stop for the Unsafe Driving violation. These reported violations do not always result in the issuance of a citation to the driver.

UNSAFE DRIVING VIOLATIONS**There are no Violations to display****INSPECTION HISTORY****There are no Inspections with violations to display****Investigation Results Overview****No serious violation(s) discovered**

Certain violations found during an investigation can result in a  for a BASIC. The status remains for 12 months following the investigation.

SERIOUS VIOLATIONS FROM INVESTIGATIONS**There are no Serious Violations to display**

Use this page to view graphs of various aspects of your safety performance.



MEASURE: 0
PERCENTILE:
No Violations
(Threshold: 50%)

Safety Event
Grouping
• 3-1C

Relevant Inspections: 6
Total Inspections with Fatigued Driving Violations: 0
Total Fatigued Driving Violations: 0

FATIGUED DRIVING VIOLATIONS

There are no Violations to display


INSPECTION HISTORY

There are no Inspections with violations to display

Investigation Results Overview



No serious violation(s) discovered

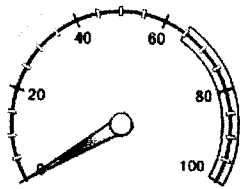
Certain violations found during an investigation can result in a  for a BASIC. The status remains for 12 months following the investigation.

SERIOUS VIOLATIONS FROM INVESTIGATIONS

There are no Serious Violations to display

Use this page to view graphs of various aspects of your safety performance.

On-road Performance Overview



MEASURE: 0.14

Safety Event
Grouping

PERCENTILE:

Inconclusive
(Threshold: 65%)

5-10

Relevant Inspections: 6
 Total Inspections with Driver Fitness Violations: 1
 Total Driver Fitness Violations: 1

DRIVER FITNESS VIOLATIONS

Violation	Description	# Total Violations	# OOS Violations	Violation Weight
391.41(a)	Driver not in possession of medical certificate	1	0	1


INSPECTION HISTORY

Report				Vehicle			Measure		
	Inspection Date	#	ST	Plate #	Lic ST	Type	Severity Weight (A)	Time Weight (B)	Time Severity Weight (AxB)
1	4/14/2011	NJSPMU002171	NJ	765ZS2	NJ	School Bus	1	2	2
Violation: 391.41(a) Driver not in possession of medical certificate (Non-OOS)							1		

Investigation Results Overview



No serious violation(s) discovered

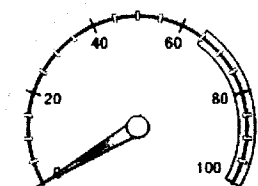
Certain violations found during an investigation can result in a  for a BASIC. The status remains for 12 months following the investigation.

SERIOUS VIOLATIONS FROM INVESTIGATIONS

There are no Serious Violations to display

Use this page to view graphs of various aspects of your safety performance.

On-road Performance Overview



MEASURE: 0
PERCENTILE:
No Violations
(Threshold: 65%)

Safety Event
Grouping
Not Applicable

Relevant Inspections: 6
Total Inspections with Controlled Substances/Alcohol Violations: 0
Total Controlled Substances/Alcohol Violations: 0

The Controlled Substances and Alcohol measure/percentile is based on Roadside Inspection reports. Some Controlled Substances and Alcohol violations are reported when a Roadside Inspection was performed following a traffic stop for the Controlled Substances and Alcohol violation. These reported violations do not always result in the issuance of a citation to the driver.

CONTROLLED SUBSTANCES AND ALCOHOL VIOLATIONS

There are no Violations to display


INSPECTION HISTORY

There are no Inspections with violations to display

Investigation Results Overview



No serious violation(s) discovered

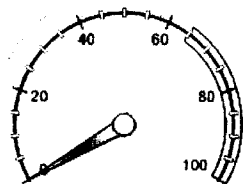
Certain violations found during an investigation can result in a  for a BASIC. The status remains for 12 months following the investigation.

SERIOUS VIOLATIONS FROM INVESTIGATIONS

There are no Serious Violations to display

Use this page to view graphs of various aspects of your safety performance.

On-road Performance Overview



MEASURE: 0 Safety Event Grouping
PERCENTILE: Insufficient Data
(Threshold: 65%) Not Applicable

Relevant Inspections: 4
Total Inspections with Vehicle Maintenance Violations: 0
Total Vehicle Maintenance Violations: 0

VEHICLE MAINTENANCE VIOLATIONS

There are no Violations to display


INSPECTION HISTORY

There are no Inspections with violations to display

Investigation Results Overview



No serious violation(s) discovered

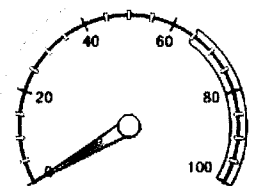
Certain violations found during an investigation can result in a  for a BASIC. The status remains for 12 months following the investigation.

SERIOUS VIOLATIONS FROM INVESTIGATIONS

There are no Serious Violations to display

Use this page to view graphs of various aspects of your safety performance.

On-road Performance Overview



MEASURE: Safety Event
Grouping
PERCENTILE:
Not Public
(Threshold: 65%)
Not Applicable

Relevant Inspections: 4
Total Inspections with Cargo-Related Violations: 0
Total Cargo-Related Violations: 0

CARGO-RELATED VIOLATIONS


There are no Violations to display

INSPECTION HISTORY

There are no Inspections with violations to display

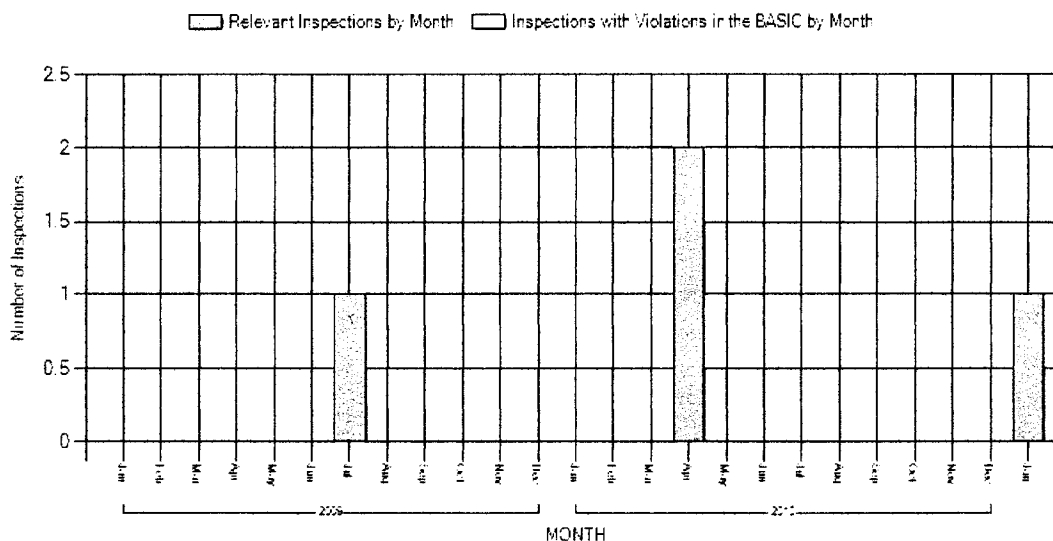
Investigation Results Overview

Details of Investigation Results are only available to logged in users.

Certain violations found during an investigation can result in a  for a BASIC. The status remains for 12 months following the investigation.

Use this page to view graphs of various aspects of your safety performance.

Relevant Inspections vs Inspections with Violations



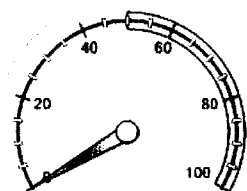
Crash Indicator

Histories or patterns of high crash involvement, including frequency and severity. It is based on information from State-reported crashes.

BASIC Overall Status

Not Public - Details of this BASIC available only to logged-in users.
(Based on a 24-month record ending January 27, 2012)

On-road Performance Overview



MEASURE:

PERCENTILE:

Not Public
(Threshold: 50%)

Safety Event
Grouping

5-8

Segment



Straight

Average Power Units: 217
Vehicle Miles Traveled (VMT): 5,110,888
VMT Year: 2011 VMT Source: Investigation - MCS151

Average Power Units (APU) x Utilization Factor (UF): 255.5

Number of Crashes: 7
Number Tow-aways: 7
Number with Injuries or Fatalities: 5
Number with HM Release: 0

Crash Indicator measure/percentile represents motor carrier crash involvement only and is not intended as a means to assess fault. For more information please visit our [Information Center](#).

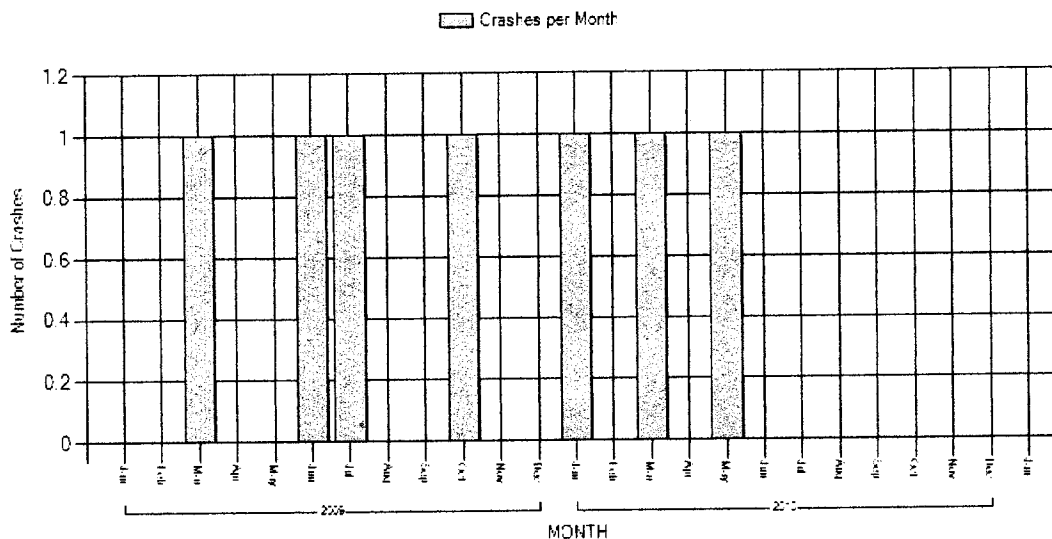
CRASH ACTIVITY DETAIL(List of vehicles involved in crashes)

Report			Vehicle		Crash				Measure		
Date	#	Lic ST	Vh ST	Plate	Fata	Inj.	Tow	Spill	Sev. Wt. (A)	Time Wt. (B)	Time Sev. Wt. (AxB)
5/2/2011	NJ0011090032	NJ	NJ	SIL500	0	1	Y	N	2	2	4
3/2/2011	NJ0011071196	NJ	NJ	SIC261	0	4	Y	N	2	2	4
1/13/2011	NJ0011022481	NJ	NJ	SIS940	0	0	Y	N	1	1	1
10/21/2010	NJ0010249008	NJ	NJ	S1Y771	0	1	Y	N	2	1	2


5	7/8/2010	NJ0010174556	NJ	NJ	S1Y628	0	1	Y	N	2	1	2
6	8/24/2010	NJ0010162804	NJ	NJ	SLY627	0	2	Y	N	2	1	2
7	3/10/2010	NJ0010060095	NJ	NJ	S1V168	0	0	Y	N	1	1	1


Use this page to view graphs of various aspects of your safety performance.

Number of Crashes per Month



USE OF SMS DATA/INFORMATION

The data in the Safety Measurement System (SMS) is performance data used by the Agency and Enforcement Community. A  symbol, based on that data, indicates that FMCSA may prioritize a motor carrier for further monitoring.

The  symbol is not intended to imply any federal safety rating of the carrier pursuant to 49 USC 31144. Readers should not draw conclusions about a carrier's overall safety condition simply based on the data displayed in this system. Unless a motor carrier in the SMS has received an UNSATISFACTORY safety rating pursuant to 49 CFR Part 385, or has otherwise been ordered to discontinue operations by the FMCSA, it is authorized to operate on the nation's roadways.



[Feedback](#) | [Privacy Policy](#) | [USA.gov](#) | [Freedom of Information Act \(FOIA\)](#) | [Accessibility](#) | [OIG Hotline](#) | [Web Policies and Important Links](#) | [Site Map](#) | [Plug-ins](#)

Federal Motor Carrier Safety Administration
1200 New Jersey Avenue SE, Washington, DC 20590 • 1-800-832-5660 • TTY: 1-800-877-8339 • Field Office Contacts

15

Federal Motor Carriers Safety Admin

Motor Passenger Carrier

Order Number: OMC57500

Date Ordered:

FORM FIELD NAME	FORM FIELD DATA
DateTime Ordered:	17-JUL-2001 06:53:21
Order Number:	OMC57500
Current Authority or Appl. in Process?	NO 412780
Docket Number:	
Federal Tax ID or SSN:	
Legal Business Name:	GST Transport, Corp.
Doing Business As Name:	GST Transport, Corp.
Business PO Box/Street:	1897 Rt. 38
City:	Southampton
State/Province/District:	NJ
Country:	USA
Postal Code:	08088
Mailing PO Box/Street:	1897 Rt. 38
City:	Southampton
State/Province/District:	NJ
Country:	USA
Postal Code:	08088
Telephone:	6092673380
Representative Name:	Jonathan Brunt
Title:	Sec.
PO Box/Street:	1897 Rt. 38
City:	Southampton
State/Province/District:	NJ
Country:	USA
Postal Code:	08088
Telephone:	6092673380
Fax:	6092673939
D.O.T. Number:	00965318
Form of Business:	Corp
Corporate-State of Incorporation	New Jersey
Sole Proprietorship-Individuals	
Partnership-Partners	
Motor Passenger Common Carrier	MPCC
Insurance Information:	16_or_more
Safety Certification:	Certified_non_exempt
Compliance Certification:	Certified
Government Funding Status	non_rec
Supplemental Evidence:	
Public Interest Criteria(optional):	
Charter and Special	charter_or_special
Route Description:	
Requesting Intrastate Authority?	yes_req
Do you hold Interstate Authority?	no_inter
Was the authority issued on or before November 19, 1982?	no_pre_nov19_82
Contract Carrier Requirements:	ccarrier1
Contracting Persons or Organizations:	
Exclusive use (a) or Distinct Needs (b) :	a
Exclusive use (a) or Distinct Needs (b) Descr	
Description of Service:	
Affiliations:	
Applicant Oath:	Affirmed

OFFICE OF
FEDERAL MOTOR CARRIER SAFETY
JUL 18 1 59 PM '01