

CONCORD, CALIFORNIA

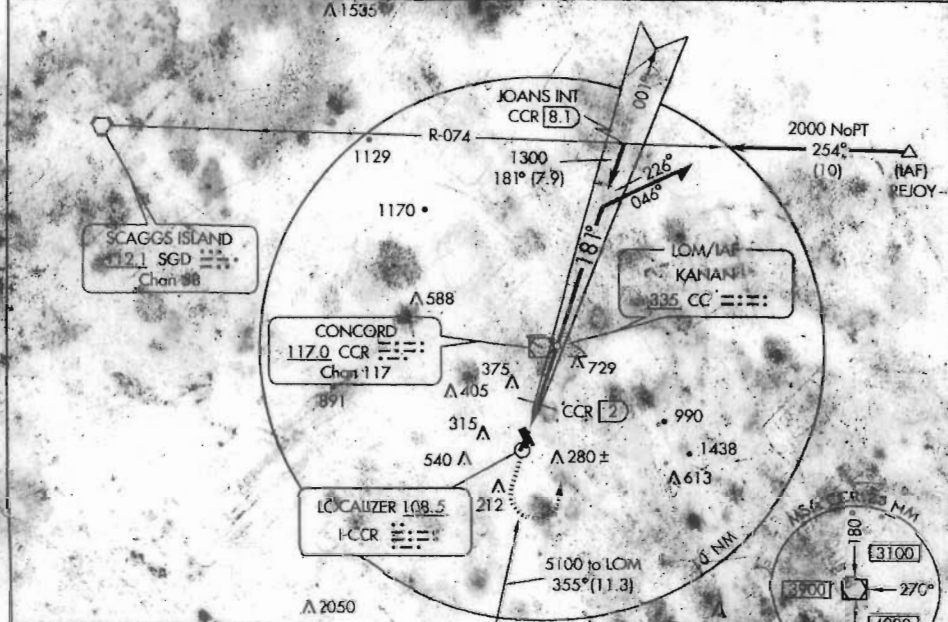
AL-5320 (FAA)

LOC I-CCR <b>108.5</b>	APP CRS <b>181°</b>	Rwy ldg <b>4400</b>
		TDZE <b>20</b>
		Apt Elev <b>23</b>

**LDA RWY 19R**  
CONCORD/BUCHANAN FIELD (CCR)

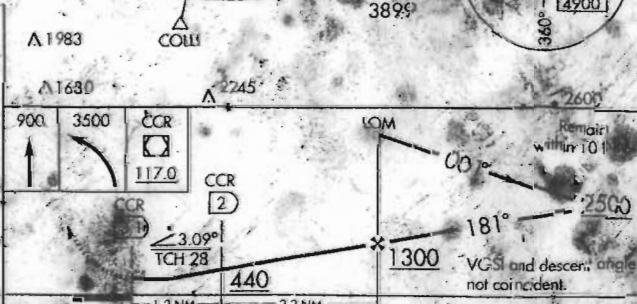
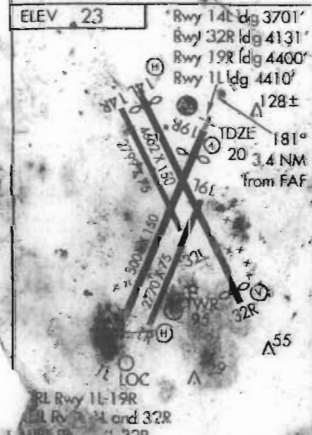
<p>⚠ Circling not authorized west of Rwy 11-19R. ↑ Inoperative table does not apply to CCR</p>	<p>MAIS -</p>	<p>MISSED APPROACH: Climb to 900 then climbing left turn to 3500 direct CCR VOR/DME.</p>
--	-------------------	--

<p>ATIS <b>124.7</b></p>	<p>TRAVIS APP CON <b>119.9 322.325</b></p>	<p>CONCORD TOWER <b>119.7 (CTAF) 257.8</b></p>	<p>UNID CON <b>121.9</b></p>	<p>CUNC DEL <b>118.75</b></p>	<p>UNICOM <b>122.95</b></p>
------------------------------	--	--	----------------------------------	-----------------------------------	---------------------------------



SW-2, 21 DEC 2006 to 18 JAN 2007

SW-2, 21 DEC 2006 to 18 JAN 2007



CATEGORY	A	B	C	D
S-19R†	440-¾	420 (500-¾)	440-¾ 420 (500-1¼)	NA
CIRCLING	580-1	680-1	680-¾ 657 (700-¾)	NA

DME MINIMUMS				
S-19R	380-¾ 360 (400-¾)			
CIRCLING	580-1	680-1	680-¾	657 (700-¾)

CONCORD, CALIFORNIA  
Amdt 7C 0621.5

CONCORD/BUCHANAN FIELD (CCR)  
**LDA RWY 19R**

37° 12' N 122° 03' W

06327  
**AIRPORT DIAGRAM**

AL-5320 (FAA)

CONCORD/BUCHANAN FIELD (CCR)  
 CONCORD, CALIFORNIA

ATIS 124.7  
 CONCORD TOWER\*  
 119.7 257.8  
 GND CON  
 121.9  
 CLNC DEL  
 118.75



COMPASS ROSE



JANUARY 2007  
 ANNUAL WIND REPORT

SM-2, 21 DEC 2006 to 18 JAN 2007

C-2005 to 18 JAN 2007

Rwy 14L ldg 3701'  
 Rwy 32R ldg 4131'  
 Rwy 19R ldg 4400'  
 Rwy 11 ldg 4410'

RWY 11-19R  
 560, D90, ST114, DT140  
 RWY 1R-39L  
 517  
 RWY 14L-32R  
 560, D90, ST114, DT140  
 RWY 14R-32L  
 512.5

HANGAR

CONTROL TOWER

TERMINAL

HANGAR

HANGARS

ELEV 24  
 TRANSIENT PARKING

CAUTION: BE ALERT TO RUNWAY  
 CROSSING CLEARANCES  
 RELEVANCE OF ALL RUNWAY HOLDING  
 INSTRUCTIONS IS REQUIRED

**AIRPORT DIAGRAM**

CONCORD, CALIFORNIA  
 CONCORD/BUCHANAN FIELD (CCR)