

**Kernville, California**

**March 11, 2013**

**N427GE**

**SR20 -1984**

**WPR13LA145**



Prepared by: Brad Miller  
Cirrus ID: SR20-1984 11 MAR 2013

# Airplane

Model:	SR20 (G3)
Serial Number:	1984
Airworthiness Date:	May 15, 2008

# Assumptions

- Runway pressure altitude  $\approx 2,435'$  msl
- Pitch = + for climb
- Roll = + for right roll

# Notes for Slides

- Engine rpm
  - Exact rpm for timestamp = one value
  - Rpm from nearest timestamps bracketing time given = two values



**PDT: 14:59:40**  
**PALT: 3309 (≈874' agl)**  
**AIRSPEED: 108**  
**RPM: 1910-1910**  
**HDG: 352.2**  
**PITCH: -4.2**  
**ROLL: 0.56**  
**DIST TO RWY: 2.8 nm**

**≈3 nm**

PDT: 15:00:44  
PALT: 2843 (≈408' agl)  
AIRSPEED: 85  
RPM: 1910-1890  
HDG: 350.9  
PITCH: -8.2  
ROLL: 0.9  
DIST TO RWY: 1.04 nm

County Rd

Isabella Highlands

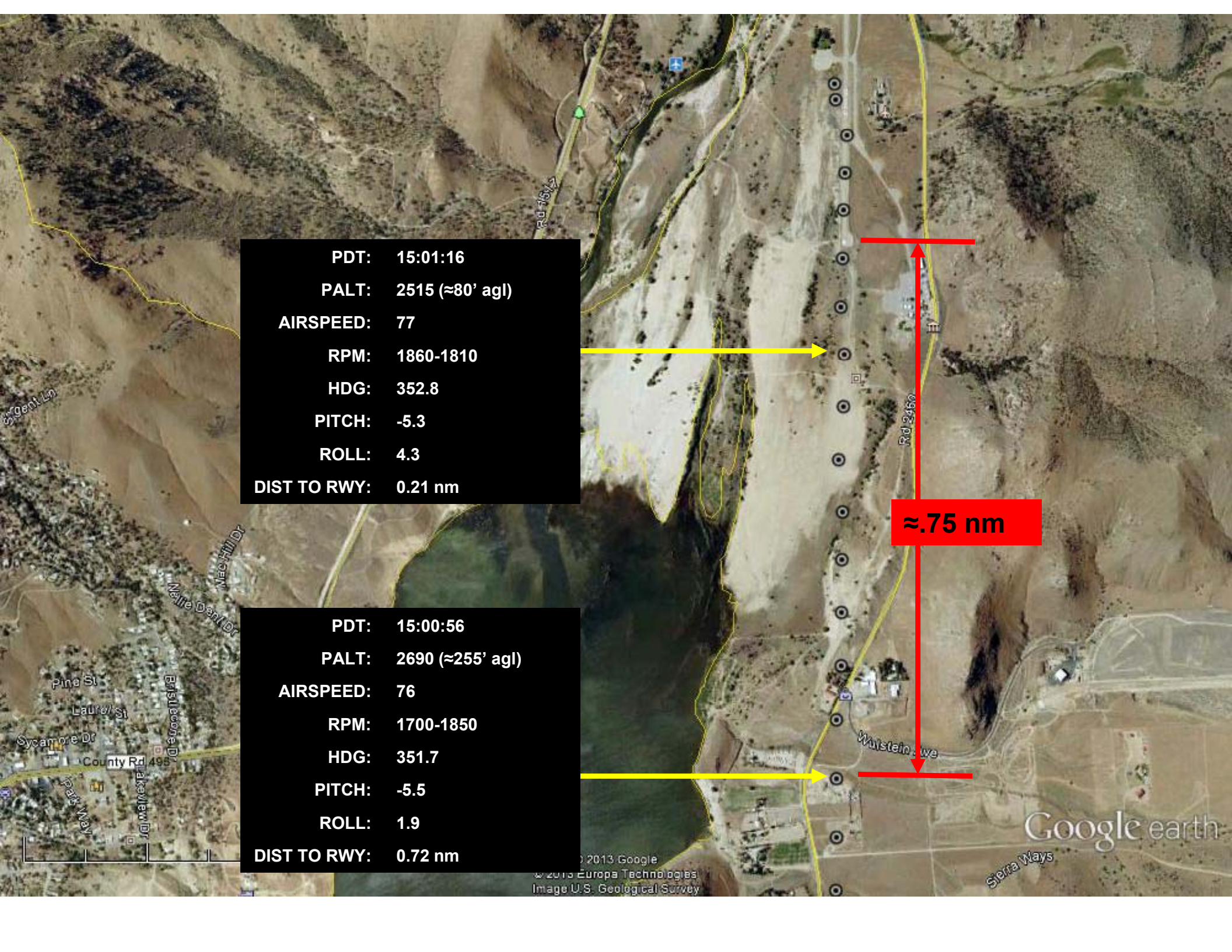
≈3 nm

Google earth

© 2013 Google  
© 2013 Europa Technologies  
Image U.S. Geological Survey

178





**PDT:** 15:01:16  
**PALT:** 2515 (~80' agl)  
**AIRSPEED:** 77  
**RPM:** 1860-1810  
**HDG:** 352.8  
**PITCH:** -5.3  
**ROLL:** 4.3  
**DIST TO RWY:** 0.21 nm

**PDT:** 15:00:56  
**PALT:** 2690 (~255' agl)  
**AIRSPEED:** 76  
**RPM:** 1700-1850  
**HDG:** 351.7  
**PITCH:** -5.5  
**ROLL:** 1.9  
**DIST TO RWY:** 0.72 nm

≈.75 nm

**PDT:** 15:01:24  
**PALT:** 2455 (≈20' agl)  
**AIRSPEED:** 69  
**RPM:** 1700  
**HDG:** 353.6  
**PITCH:** -2.1  
**ROLL:** -6.6 (left roll)  
**DIST TO RWY:** 140 feet



County Rd 495

Rd 151

RD 151

Sierra Way  
Rd 245C

Google earth

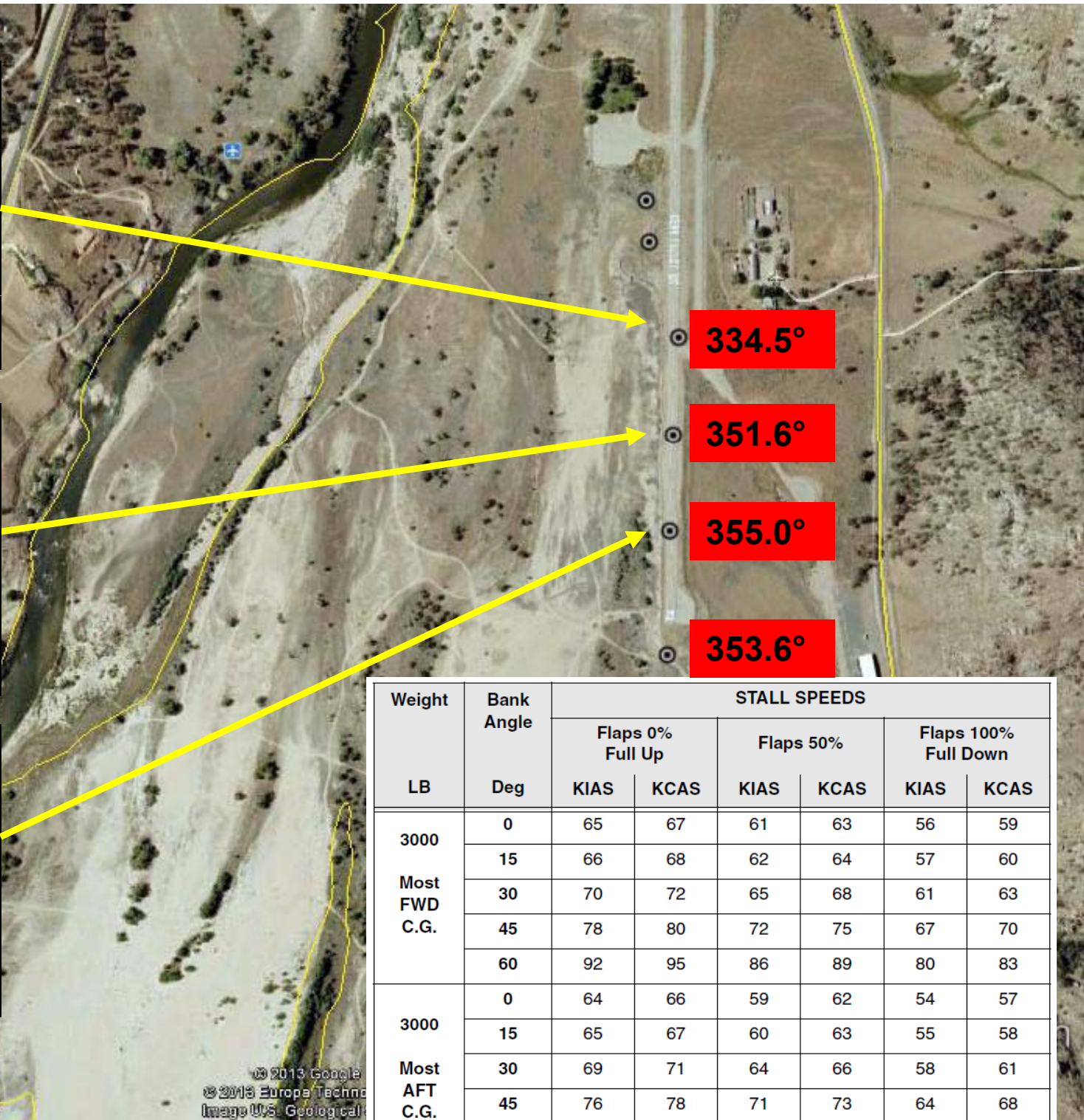
© 2013 Google  
© 2013 Europa Technologies  
Image U.S. Geological Survey



**PDT:** 15:01:36  
**PALT:** 2452(≈17'agl)  
**AIRSPEED:** 55  
**RPM:** 2400  
**HDG:** 334.5  
**PITCH:** 13.2  
**ROLL:** -18.63 (left roll)

**PDT:** 15:01:32  
**PALT:** 2436 (≈0' agl)  
**AIRSPEED:** 58  
**RPM:** 1350-2400  
**HDG:** 351.6  
**PITCH:** 8.6  
**ROLL:** 0.5

**PDT:** 15:01:28  
**PALT:** 2440 (≈5' agl)  
**AIRSPEED:** 65  
**RPM:** 1700 -1350  
**HDG:** 355.0  
**PITCH:** 4.53  
**ROLL:** 3.1



Weight	Bank Angle	STALL SPEEDS					
		Flaps 0% Full Up		Flaps 50%		Flaps 100% Full Down	
		KIAS	KCAS	KIAS	KCAS	KIAS	KCAS
3000 Most FWD C.G.	0	65	67	61	63	56	59
	15	66	68	62	64	57	60
	30	70	72	65	68	61	63
	45	78	80	72	75	67	70
	60	92	95	86	89	80	83
3000 Most AFT C.G.	0	64	66	59	62	54	57
	15	65	67	60	63	55	58
	30	69	71	64	66	58	61
	45	76	78	71	73	64	68
	60	90	93	84	87	76	81

PDT: 15:01:44  
PALT: 2428(≈-7' agl)  
AIRSPEED: 0  
RPM: 1610-0  
HDG: 41.6  
PITCH: -5.2  
ROLL: 177.47

PDT: 15:01:40  
PALT: 2470(≈35' agl)  
AIRSPEED: 58  
RPM: 2400-1610  
HDG: 344.1  
PITCH: 10.7  
ROLL: 17.57

3+ G-force at 15:01:41

